



Convenient Control Placement



Steep Slopes



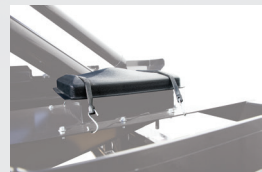
Stone Guards



Easy Latches



Open Placement of Engine



Chute Covers

## REDESIGNED FOR MAXIMUM SEED PROTECTION AND IMPROVED PERFORMANCE

THE NEW J&M SPEEDTENDER PRO™ 251 & 451 BOX TENDERS ARE DESIGNED FOR GREATER SEED PROTECTION AND IMPROVED PERFORMANCE.

Minimal seed damage equals maximum germination results. That is why both models feature a gentle poly cup auger with patent pending "Bottom-Less Pit" design. This combination offers a more economical method to unload seed without sacrificing performance compared to tube belt conveyor designs. Minimizing auger seed damage is achieved by positioning the intake area above the bottom of the auger to create a safe zone for seed that may not be initially transported up the auger. This safe zone allows the seed to avoid the bottom of the auger where grinding and cracking occurs before moving up the auger to be unloaded. Through extensive testing, the intake area is precisely placed to minimize seed damage and rival the performance found with expensive round tube belt conveyor designs.

The new 251 and 451 Model Pro-Box designs also feature steep tubular slopes from the box to the auger intake area for a quick and complete unload. The tall 16'-4" auger unload height with 3-stage telescoping spout allows you to easily fill the tallest bulk seed tank or widest planter boxes. The low 4'-2" deck height and unique latch design makes loading and unloading safe and easy. Convenient controls and engine placement makes service more convenient.

While planting season doesn't always go as expected, you can trust the J&M line of seed tenders to deliver your seed quickly and gently to increase your planting efficiency and maximize your bottom line.

- Bottom-Less Pit
- Steep Slopes
- Poly-Cupped Auger
- 16'-4" Auger Height
- 4'-2" Deck Height
- 13 hp Honda Engine
- Open Engine Placement
- Torsion Flex Axles
- 4 Minutes/Box Unload Rate
- Fully Powder Coated
- Trouble Free Guide Plates
- LED Work Light

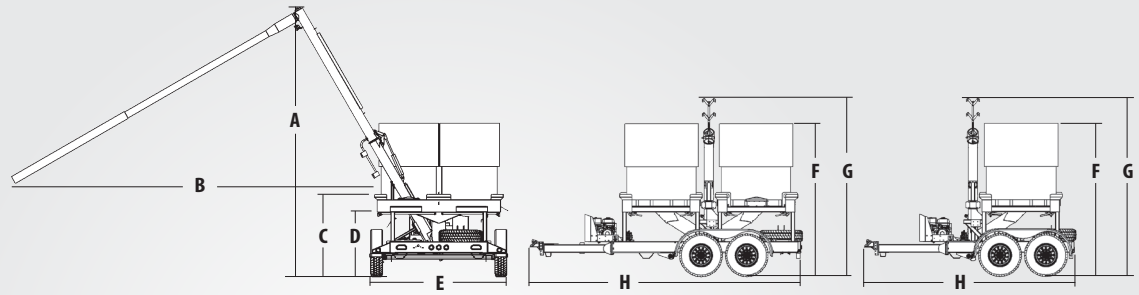


M O D E L S





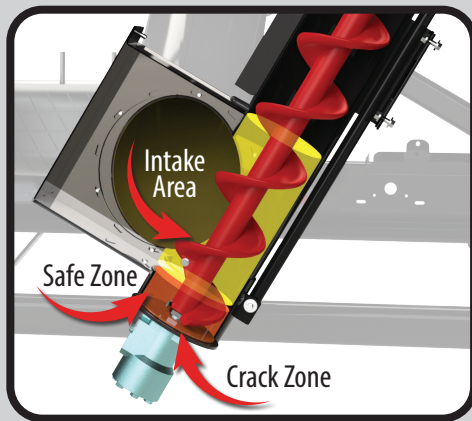
	251	451
A	16'-4"	16'-4"
B	21'-3"	21'-3"
C	4'-11½"	4'-11½"
D	4'-2"	4'-2"
E	8'-4"	8'-4"
F	9'-3"	9'-3"
G	12'-1"	12'-1"
H	13'-0"	16'-10"



	Capacity (total)**	Weight (empty)	Tongue Wt. (loaded)	Conveyor/Auger	Unloading Rate	Conveyor/Auger Reach	Axles	Engine
251	Two (2), 50 Unit Boxes	2,850 lbs.	650 lbs.	16' Spout Height	4-Minutes per Box	42' (w/optional 24' spout)	Two (2), 5,200 lb. Torsion-Flex Axles w/Electric Brakes	13 hp Honda Motor w/Electric Start
451	Four (4), 50 Unit Boxes	3,786 lbs.	1,400 lbs.	16' Spout Height	4-Minutes per Box	42' (w/optional 24' spout)	Two (2), 7,000 lb. Torsion-Flex Axles w/Electric Brakes	13 hp Honda Motor w/Electric Start



## bottom-less pit auger design

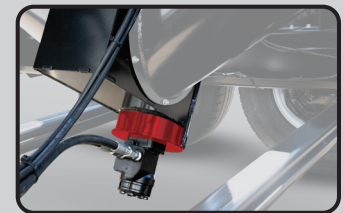


### INDUSTRY EXCLUSIVE "BOTTOM-LESS PIT" AUGER DESIGN

#### Significantly Minimize Seed Damage

Our patent pending auger design eliminates seed cracking by extending the distance between the intake area and bottom end of the auger. This increased distance prevents seed that is not immediately carried up the auger from grinding and cracking at the bottom of the tube.

The poly-cupped interior flighting is cup shaped to gently and quickly carries the seed up the auger. Interlocking sections make it easy to replace damaged flights, if necessary.



The outer tube and flighting diameters are also correctly sized to prevent seed from getting caught against the tube and cracking.

This design virtually eliminates the chance of cracking seed and gives you optimal performance for maximum germination rates when planting. This auger design rivals the performance of a typical round belt conveyor design, but without the inflated price tag.

### GUARANTEE

J & M MANUFACTURING CO guarantees against any faulty construction or materials for a period of ONE year. We reserve the right to inspect and decide whether material or construction was faulty or whether abuse or accident voids our guarantee.

Specifications are subject to change without notice or obligation. ® Registered Trademark of J.&M. Mfg., Co. Inc.

