



12 & 22 Series X-Tended Reach
Single Auger Grain Cart

GREATER

— And Straighter —
Upward, Outward & Forward Reach



12 SERIES MODELS 812 • 1012 • 1112 • 1312 • 1412 22 SERIES MODELS 1122 • 1222 • 1522



GREATER

— And Straighter —

Upward, Outward & Forward Reach

J&M's X-Tended Reach models offer greater and straighter, upward, outward and forward reach. Available in 875-1,500 bushel capacities, the in-line auger design eliminates the need for costly and problematic u-joint and soft-start type connectors, allowing the grain to quickly travel straight from lower to upper auger, transferring grain efficiently and reliably from the cart to the semi.

The 12 Series carts have a standard 12 ft wide tank design while the 22 Series carts have a patented leaner tank design that extends the low side of the cart an extra two feet towards the combine. The 20" Bullet Auger unloads 600+ bushels per minute, the same rate as a larger 22" auger. Both 12 and 22 Series carts feature a unique three part telescoping flow control spout with a quick attach design that provides various height and reach combinations to meet your specific unloading demands. Easily reach the tallest semi trailers and across ditches and fence rows while still having the forward reach to give the operator the closest and clearest view of the auger during unloading.

EXCELLENT CLEANOUT

All J&M grain carts have built a solid reputation for excellent cleanout... even in high moisture grain. The secret is in the tank design, allowing the grain to enter the sump at different speeds. This creates a boiling effect that prevents bridging in high moisture grains.





Unload Position



Field Position



Storage Position

FRONT FOLD DESIGN

"100% VISIBILITY"

Since we were awarded a patent for our front folding corner auger design over 30 years ago, some competitors have described their side folding auger carts using the terms "Corner Auger Design", "Corner-Like" and "100% Visibility". We believe this is a creative marketing ploy to try and convince the end user that they offer the operator the same visibility of the upper auger as our patented design. Don't be fooled by side folding auger carts that use these terms. Many of the side folding augers barely extend past the front of the tank, placing the unloading spout further away from the tractor cab. Ironically, some of the side folding auger designs also provide an "Upper Auger Indicator" on the front of the cart so the operator can tell where the auger is when they fold it in the storage position. If it provides 100% visibility, why do they need an auger indicator?

Designed with the operator in mind, J&M's Front Folding Corner Auger design offers 100% visibility of the upper auger during unloading AND during the folding sequence, giving the operator a closer, clearer view when unloading grain.

SIDE-SHOOTER™ FLOW CONTROL SPOUT™

The patented hydraulic flow control spout allows the operator to precisely place grain across the trailer. The Side-Shooter design positions the spout perpendicular to the trailer so all four corners can be easily filled!

The telescoping spout features a three part design that extends outward for maximum side reach and retracts when in the downward position to maintain maximum unloading height. Each of the three sections can be easily removed or added to offer multiple combinations of height and each to fit your particular unloading need.

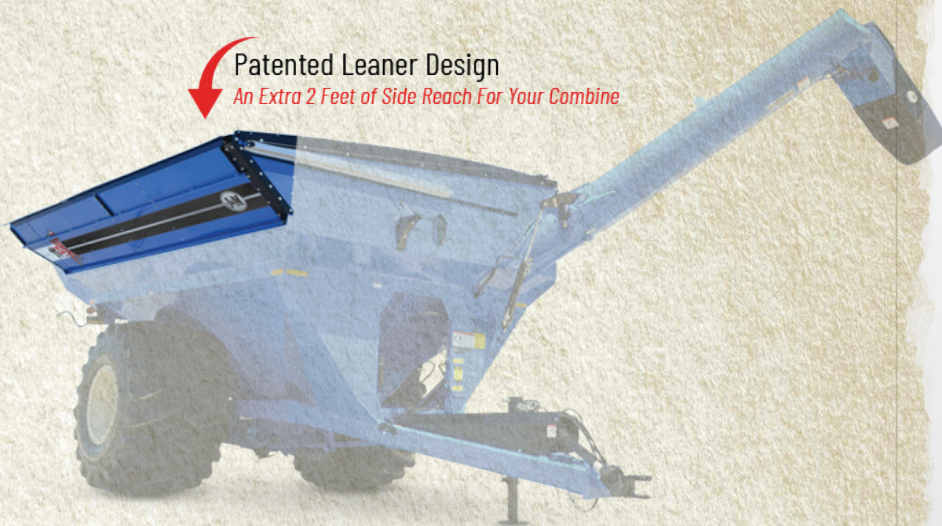


12 SERIES X-TENDED REACH GRAIN CARTS

Models 812 • 1012 • 1112 • 1312 • 1412

Maximum Upward, Outward and Forward Auger Reach

Since our first patented front-folding corner auger cart was introduced in the late 1980s, we've been designing and building innovative grain carts that help farmers maximize their operating efficiency. The X-Tended Reach Series of grain carts continues this trend, having recently been awarded another U.S. patent for its unique auger design. The 12 Series X-Tended Reach design offers the operator 100% visibility during unloading AND equally important 100% visibility during the folding sequence. But the rigid upper auger has been X-Tended for even greater outward, upward and forward reach, all while folding diagonally along the front of the cart for compact storage.



22 SERIES X-TENDED REACH GRAIN CARTS

Models 1122 • 1222 • 1522

**Maximum Upward, Outward and Forward Auger Reach AND
Maximum Reach for the Combine Auger**

The 22 Series X-Tended Reach grain carts offer the same maximum upward, outward and forward auger reach as the 12 Series, but also includes J&M's patented Leaner tank design. The low side of the grain cart features a bolt-on tank design that extends toward the combine auger for additional two feet, giving both the combine and grain cart operators more room to navigate in the field without overlap. Your combine auger just gained two feet of side reach, making harvesting easier, especially with wider heads.

STRAIGHT vs BENT AUGER DESIGNS

J&M's straight auger design provides equivalent side reach and greater forward reach compared to competitor's bent auger design.

J&M's in-line auger design is much more efficient and reliable compared to an offset auger design. No u-joint coupling or cushion arm required. Grain is not redirected, ensuring better transfer of grain and auger cleanout. The in-line auger design eliminates the need for costly and problematic u-joint and soft-start type connectors, allowing the grain to quickly travel straight from lower to upper auger. ►



Models 1012 • 1112 • 1312 • 1412



EASE OF USE FOR OPERATOR

Eliminates Twisting & Turning

The biggest benefit of a right-side auger is that it makes unloading easier and more comfortable. Tractors are designed with controls and monitors on the right side of the cab. Compared to a traditional left-side auger grain cart, putting the auger on the right side makes it much easier to watch the grain cart unload, use the tractor controls and track monitors at the same time. This reduces the risk for mistakes especially during stressful moments and greatly diminishes the amount of twisting and turning while operating the grain cart.

ULTIMATE VISIBILITY

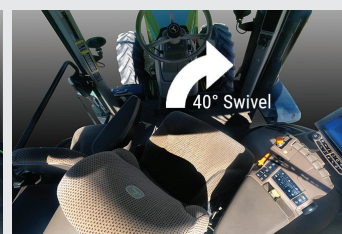
Superior Forward Reach Provides Clearer View of Unload Auger

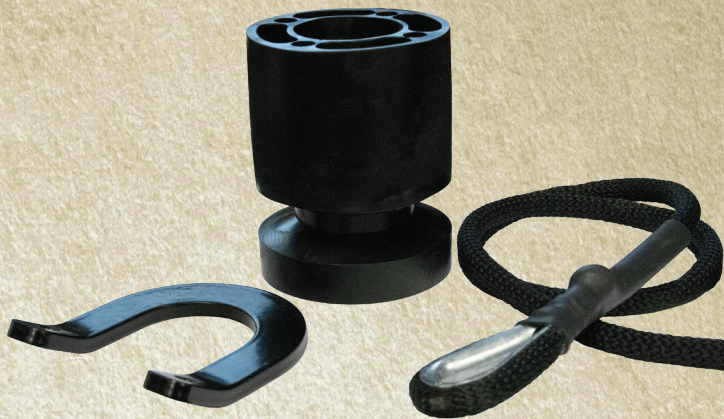
J&M's right side unload grain carts use the same design as the X-Tended Reach series grain carts. These are proven, reliable carts currently in use by thousands of farmers throughout the world. J&M's X-Tended Reach augers provide the best combination of upward, outward and forward reach. Combine that with the added convenience of an auger on the right side, and the result is a grain cart that is easier to unload than any in the history of farming.

TRACTOR SEAT SWIVEL

Tractors Seats Swivel More to the Right

Tractor seats swivel more to the right than the left. Some tractors swivel up to 32° more to the right making it easier to turn your seat instead of your body to see the auger.





The Glide Right roll tarp is designed to offer greater protection of your valuable crops while making opening and closing quick and easy. The patent pending design keeps the tarp square and in line when turning the roll tube, eliminating the chance of binding and creating a tighter seal to keep moisture out and prevent the chance of wind flapping or lifting the tarp during transport.



WHY ADD A SCALE SYSTEM?

Adding a scale system to your grain cart will increase your harvesting efficiency and record keeping accuracy. Depending on the size of the cart, J&M currently offers a 3 point or 5 point scale system. All scales are factory installed and calibrated to be accurate within 0.5% on a 5 point system and 1.0% on a 3 point system. An upgraded indicator will automatically log the unloads for simpler record keeping, and with smart options like moisture and auto gate shut off, the operator can focus on harvest. Exporting records is as simple as an email or inserting a USB drive. With the iFarm Cart, your records can be sent directly to the cloud for the farm

**ELECTRIC
ROLL TARP
UPGRADE**

Grooved Rollers
for ultimate tracking

Hold Down Straps
keeps tarp from flapping in wind

Front & Rear Return Springs
for even tension reducing binding

GLIDERIGHT®
ROLL TARP SYSTEM



Hydraulic Drive Kit



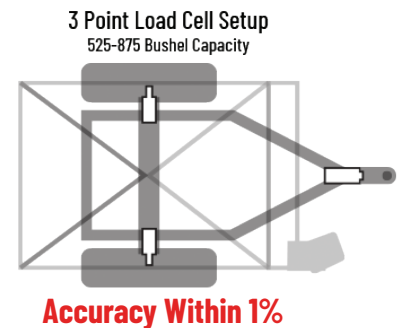
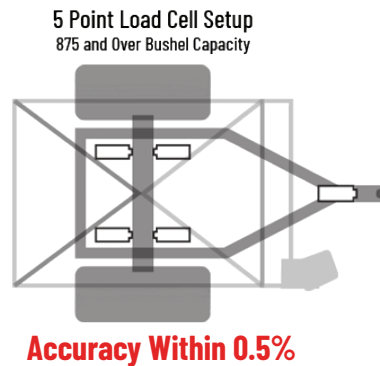
Camera Kit

iFARMTM
CART
CLOUD BASED SCALE SYSTEM



manager with no user input. Choose any of our indicators from economically priced to feature rich depending on your farming needs.

3 point systems place the weigh bars in the spindles. This placement is fine for tires up to 31" wide, but as grain cart tires get wider than 31" the distance from the center of gravity increases, causing the torque being applied to the weigh bars to increase exponentially when the cart is on an angle. This causes the 3 point scale system to become inaccurate. J&M was the first in the industry to use a 5 point scale system when using these wide tires. The 5 point system places 4 weigh bars in the axle, so the weight is distributed on the weigh bars evenly to keep the scale system accurate within 0.5%.



J&M iFARM CART BY AGRIMATICS™

J&M iFarm CART by Agrimatics™ is the leading edge of agricultural weighing systems. The patent-pending system automatically saves every unload and connects wirelessly to all in-range mobile devices providing world-class indicator displays to the entire team. iFarm Cart is simple to install and simpler to use. Say goodbye to missed unloads and losing your harvest data!

- Use your Android or iOS device to automatically record all your harvest
- No cell data required! Connects directly via Bluetooth
- Anyone in range can connect and see live weight
- Free unlimited cloud backup via Agrimatics Aero
- Save all your harvest data through one free app
- Powerful & cost-effective options available*
 - Moisture sensor
 - Auto-gate shut off

**Options purchased separately*



Moisture Sensor

SCALE ADD-ON OPTIONS

- Auto-gate shut-off kit for predetermined weight (For use with Digi-Star GT 560 indicator Only)
- Thermal printer for Digi-Star indicator
- Moisture sensor kit (For use with J&M iFarm Cart)
- Auto-gate shut off kit (For use with J&M iFarm Cart)



GT 400



iFarm Express

BASE INDICATORS	Digi-Star GT 400	iFarm Express
Start/Stop Operation	Yes	Yes
Field Data Storage	1 Line	Unlimited
iOS/Android Compatible	No	Yes
Printer Ready /Serial Port	Yes	No
Easy Data Export	No	Yes (.CSV File)

UPGRADED INDICATORS	Digi-Star GT 560	iFarm Cart
Auto Unload Detect	Yes	Yes
Field Data Storage	Yes	Yes
USB Data Transfer	Yes	No
Built-in Email & Cloud	No	Yes
Software Updates	No	Over The Air
Auto Gate Shut Off Ready	Yes	Yes
iOS/Android Compatible	No	Yes
Desktop Software	Included	Free Web Based
Cloud Storage	No	Yes



GT 560



iFarm™ Cart



V4 TRACK SYSTEM

- Built from high-strength plate steel, the V4 Track System has a strong but lighter undercarriage frame compared to competitors. The result is minimized compaction and reduced weight for handling during assembly and maintenance.
- The sleek design has very few places for mud and debris to settle, keeping buildup to a minimum.
- Oil bath hubs, greaseless pivots (self-lubricated sleeve bearings), and a spring tensioner system result in a track system that is virtually maintenance free during day-to-day operations. Each oil bath hub has a cassette style seal, a separate seal guard, and an external v-ring seal for a total of 6 contacting sealing lips and 2 non-contacting sealing lips for better sealing under the harshest conditions.
- The axle mount height of the V4 Track System is among the lowest in the industry, reducing the overall height of the implement.
- Upper rollers limit unsightly belt flop.
- The bogie wheel pivots are closer to the ground than on competitors' models, allowing the bogies to more easily and smoothly walk over obstacles.
- Lower profile end wheels result in less bearing stress during turns, leading to longer bearing life. The smaller diameter of the end wheels also allows for bogie wheels to be located nearer the end wheels, resulting in a more uniform ground footprint.
- End wheel cutouts provide an exit point for mud/debris during cleaning and an access point for inspection/maintenance.



LONGER TANK LIFE...LESS MAINTENANCE

Redesigned for 2021, J&M's Stabilizer Trax System provides all the benefits of our V4 track system and more. The patented suspension undercarriage features the following benefits not provided by other track designs:

1. Rubber spring suspension on the bogie wheels that results in 3x less tank vibration, creating a smoother ride that greatly extends the cart life.
2. Load adjusted end wheel height. The end wheels are raised under light or no load to reduce tread wear, require less turning force, and to climb over uneven terrain more easily. As load is increased, the end wheels lower to utilize the entire track footprint, minimizing compaction.
3. Independently pivoting bogie pairs. The bogie wheels can pivot up to 14° front-to-back and 7° side-to-side, reducing stress over uneven terrain on the belt, wheels and hubs.

The 2021 redesign features a more efficient design that reduces track weight while increasing the ground footprint, resulting in even less compaction. Wheel components are completely revamped to provide even larger sight windows for checking oil level and the strongest bearing sets in the industry.

STABILIZER TRAX2 ADVANTAGES

- Patented suspension undercarriage
 - Suspension system utilizes rubber springs resulting in 3x less vibration than other track systems and similar vibration to an implement on tires
 - Reduced vibration results in longer cart life and a smoother ride
 - Idler wheels remain up when the cart is empty for reduced belt wear during transport
 - Raised end wheels easily climb over obstacles and make turning easier than traditional tracks
 - Idler wheels move down when cart is under load for maximum flotation
 - Independently suspended, oscillating bogie wheels pivot up to 14° front-to-back and 7° side-to-side to supply more uniform ground contact
 - Belt tension spikes are minimized, increasing bearing life
- X-Large ground footprint
 - Average ground pressure of 12 psi or less for 36" wide tracks, even on a 1500 bu. cart
 - 46" wide tracks provide the largest footprint in the industry at nearly 78 ft²
- The industry's strongest bearings provide unmatched performance under the heaviest loads
- Hubs have large sight windows to easily check oil levels from a distance

Model 36150-STX2	
36" Track Specification	Full Cart
Belt Width	36"
Overall Length	150"
Footprint Dimensions (One Track)	36" x 117.8"
Footprint Area (Both Tracks)	8,480 in ²
Avg. Ground Pressure with 1,500 Bushel Cart	12.2 psi
Pivot Shank	6" Dia.

Model 46155-STX2	
46" Track Specification	Full Cart
Belt Width	46"
Overall Length	155.6"
Footprint Dimensions (One Track)	46" x 121.4"
Footprint Area (Both Tracks)	11,170 in ²
Avg. Ground Pressure with 2,000 Bushel Cart	14.1 psi
Pivot Shank	7" Dia.



Upper Roller
keeps tension on the belt to
limit unsightly belt flop.

Swivel Hitch Alignment Mechanism
uses two bolts for adjustment and is
accessible from each side of the track and
is accompanied by two steel keepers to
prevent loosening during operation.

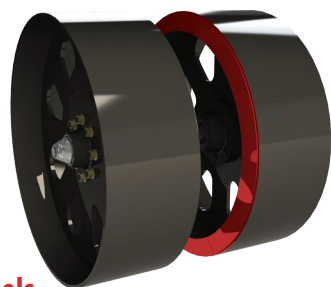
High Strength Axle
The V4 Series uses a strong axle
(the same tube axle as the
Stabilizer Trax)



Uniform ground ^{more} pressure

Optimized Track Geometry reduces weight while giving it a slightly
larger footprint and more even wheel spacing. The result is minimized compaction.

Maintenance Free Spring Tensioner
so there is no need for adjustment
once set. "Set it and forget it."

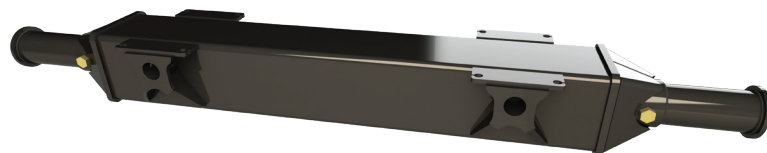


End Wheels

Full-height flanges on end wheels significantly reduce
guide lug wear, extending belt life.

Tube Axle

The heart of each track axle is 12" x 12" x 1/2" (36" track) or 12" x 12" x 5/8" (46"
track) thick tubing for maximum bi-directional bending strength, capable of
withstanding the heaviest loads under the most extreme conditions.



COMMON FEATURES

Tensioner

A single large diameter compression spring
provides active tension for the track belt. The
spring tensioner requires no daily adjustment,
eliminating the hassle of hydraulic or other
tension systems.

Upper Roller

Upper Roller keeps tension on the belt
and reduces belt flop.

Undercarriage Beam

Constructed from high-strength plate steel, the
undercarriage beam provides superior strength at a
reduced weight. The sleek design stays cleaner with
minimized locations for mud buildup.

Swivel Hitch Alignment

The convenient alignment
mechanism uses two bolts for
adjustment and is accessible from
each side of the cart. Two steel
keepers prevent loosening during
operation.

Oil Bath Hubs

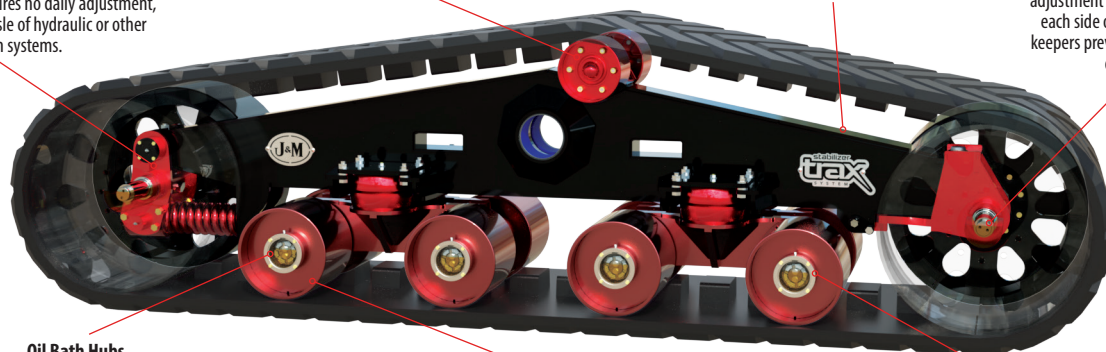
Oil bath hubs utilize synthetic oil for superior bearing protection
and excellent lubricant flow, even in the coldest weather. There is
no need for constant greasing of hubs. Multi-lip cassette seals with
separate seal guards provide better sealing under the harshest
conditions. Large sight windows make checking the oil level a
breeze, even from a distance.

Bogie Wheels

Rubber springs and pivoting bogies significantly reduce tank shock loads
and vibration while providing more uniform ground contact over uneven
terrain. Each bogie pair can pivot 14° front-to-back and 7° side-to-side,
reducing stress on the belt, wheels and hubs. (Stabilizer Trax only.)

Self-Lubricated Sleeve Bearings

All pivots (and bogie rollers on Stabilizer Trax) utilize
self-lubricated sleeve bearings, requiring no daily
greasing.



12 Series Specifications

SPECIFICATIONS					
Single Wheel Option	Model 812	Model 1012	Model 1112	Model 1312	Model 1412
Capacity	875 Bushels	1,025 Bushels	1,150 Bushels	1,325 Bushels	1,400 Bushels
Auger, One Vertical	18" Bullet	20" Bullet	20" Bullet	20" Bullet	20" Bullet
Unload Rate (bu/min)	up to 500	up to 600+	up to 600+	up to 600+	up to 600+
Wheels	21x32, 27x32 or 30x32	30x32, 31x32, 32x36 or 44x32	30x32, 32x36 or 44x32	32x36 or 44x32	44x32
Tires	24.5x32, 30.5x32 IF800/60R32 or 900/60R32	900/60R32, 35.5x32, 1050/50R32 or IF1250/50R32	900/60R32, 1050/50R32 or IF1250/50R32	IF1050/50R32 or IF1250/50R32	IF1250/50R32
Hubs	10 Bolt	10 Bolt	10 Bolt or 20 Bolt	10 Bolt or 20 Bolt	10 Bolt or 20 Bolt
Spindles	4 ½" Diameter	4 ½" or 6" Diameter	4 ½" or 6" Diameter	6" Diameter	6" Diameter
Tongue Weight					
Empty	1,275 lbs.	2,900 lbs.	2,900 lbs.	2,400 lbs.	2,400 lbs.
Loaded	3,800 lbs.	4,200 lbs.	4,200 lbs.	4,800 lbs.	4,800 lbs.
Total Weight (approx.)	10,796 lbs.	14,172 lbs.	14,572 lbs.	17,268 lbs.	17,382 lbs.
Walking Tandem Dual Wheels Option					
Capacity		1,000 Bushels	1,125 Bushels	1,300 Bushels	1,375 Bushels
Wheels		16x42 or 18x42	16x42 or 18x42	18x42	18x42
Tires		480/80R42 or IF520/85R42	480/80R42 or IF520/85R42	IF520/85R42	IF520/85R42
Spindles		4 ½" Diameter	4 ½" Diameter	4 ½" Diameter	4 ½" Diameter
Total Weight (approx.)		18,453 lbs.*	18,643 lbs.*	19,610 lbs.*	19,724 lbs.*
Tracks Option					
Capacity		1,050 Bushels	1,175 Bushels	1,350 Bushels	1,425 Bushels
Total Weight (approx.)		22,676 lbs.**	22,866 lbs.**	23,772 lbs.**	23,886 lbs.**

Measured with 20" hitch height. 812 measure with 30.5x32R1 tires. 1012, 1112, 1122 measured with 900/60R32 tires. 1312, 1412, 1222, 1522 measured with 1250/50R32 tires.

* Weighed with 520/85R42 Lug Tires (set of 4)

Compaction rates are calculated on a flat plate surface area.

** Weighed with 36" Stabilizer Trax2

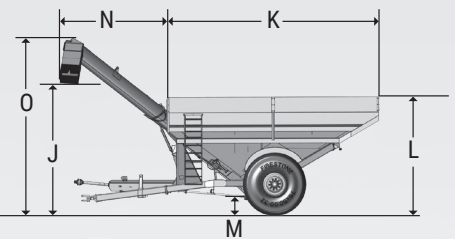
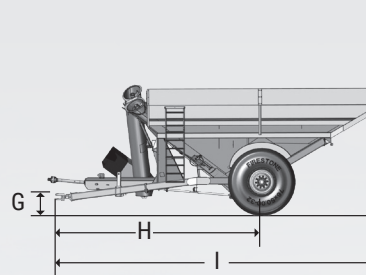
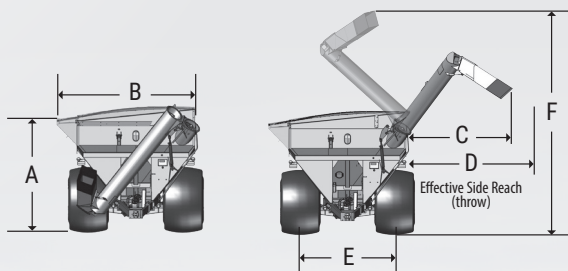
12 & 22 Series Dimensions

	A	B	C	D	E	F	G	H	I	J	K	L	M	N	O
812	11'-6"	11'-9"	11'-7"	14'-2"	10'-0"	22'-1"	1'-7"	15'-6"	22'-8"	13'-10"	16'-0"	12'-0"	1'-5"	10'-4"	16'-8"
1012	10'-11"	11'-9"	10'-10"	13'-6"	10'-0"	22'-3"	1'-6"	20'-1"	30'-7"	13'-6"	22'-0"	12'-0"	1'-5"	11'-2"	18'-2"
1112	11'-11"	11'-9"	10'-10"	13'-6"	10'-0"	22'-3"	1'-6"	20'-1"	30'-7"	13'-6"	22'-0"	12'-6"	1'-5"	11'-2"	18'-2"
1312	11'-9"	11'-9"	10'-5"	13'-1"	10'-0"	20'-11"	1'-6"	21'-10"	34'-5"	13'-6"	25'-6"	12'-8"	1'-5"	11'-8"	18'-0"
1412	12'-3"	11'-9"	10'-5"	13'-1"	10'-0"	20'-11"	1'-6"	21'-10"	34'-5"	13'-6"	25'-6"	12'-8"	1'-5"	11'-8"	18'-0"
1122	11'-3"	13'-9"	10'-10"	13'-6"	10'-0"	22'-3"	1'-6"	20'-1"	30'-7"	13'-6"	22'-0"	12'-4"	1'-5"	11'-2"	18'-2"
1222	12'-4"	13'-9"	10'-10"	13'-6"	10'-0"	22'-3"	1'-6"	20'-1"	30'-7"	13'-8"	22'-0"	12'-8"	1'-5"	11'-2"	18'-2"
1522	11'-10"	13'-9"	10'-5"	13'-1"	10'-0"	20'-11"	1'-6"	21'-10"	34'-5"	13'-6"	25'-6"	12'-7"	1'-5"	11'-8"	18'-0"



22 Series Specifications

SPECIFICATIONS			
Single Wheel Option	Model 1122	Model 1222	Model 1522
Capacity	1,130 Bushels	1,250 Bushels	1,475 Bushels
Auger, One Vertical	20" Bullet	20" Bullet	20" Bullet
Unload Rate (bu/minutes)	up to 600+	up to 600+	up to 600+
Wheels	30x32, 32x36 or 44x32	32x36 or 44x32	44x32
Tires - Compaction	900/60R32, 1050/50R32 or IF1250/50R32	IF1050/50R32 or IF1250/50R32	IF1250/50R32
Hubs	10 Bolt or 20 Bolt	10 Bolt or 20 Bolt	20 Bolt
Spindles	4 1/2" or 6" Diameter	4 1/2" or 6" Diameter	6" Diameter
Tongue Weight			
Empty	2,900 lbs.	2,900 lbs.	3,000 lbs.
Loaded	4,200 lbs.	4,200 lbs.	4,800 lbs.
Total Weight (approx.)	14,770 lbs.	16,701 lbs.	17,968 lbs.
Walking Tandem Dual Wheels			
Capacity	1,105 Bushels	1,225 Bushels	
Wheels	16x42, 18x42	18x42 Heavy	
Tires - Compaction	480/80R42 or IF520/85R42	IF520/85R42	
Spindles	4 1/2" Diameter	4 1/2" Diameter	
Total Weight (approx.)	18,841 lbs.*	19,042 lbs.*	
Tracks Option			
Capacity	1,155 Bushels	1,275 Bushels	1,500 Bushels
Total Weight (approx.)	23,064 lbs.**	23,265 lbs.**	24,250 lbs.**





12 & 22 Series X-Tended Reach
Single Auger Grain Cart



GUARANTEE

J & M MANUFACTURING CO guarantees against any faulty construction or materials for a period of ONE year. We reserve the right to inspect and decide whether material or construction was faulty or whether abuse or accident voids our guarantee.

Specifications are subject to change without notice or obligation.

[®] Registered Trademark of J. & M. Mfg., Co. Inc.