

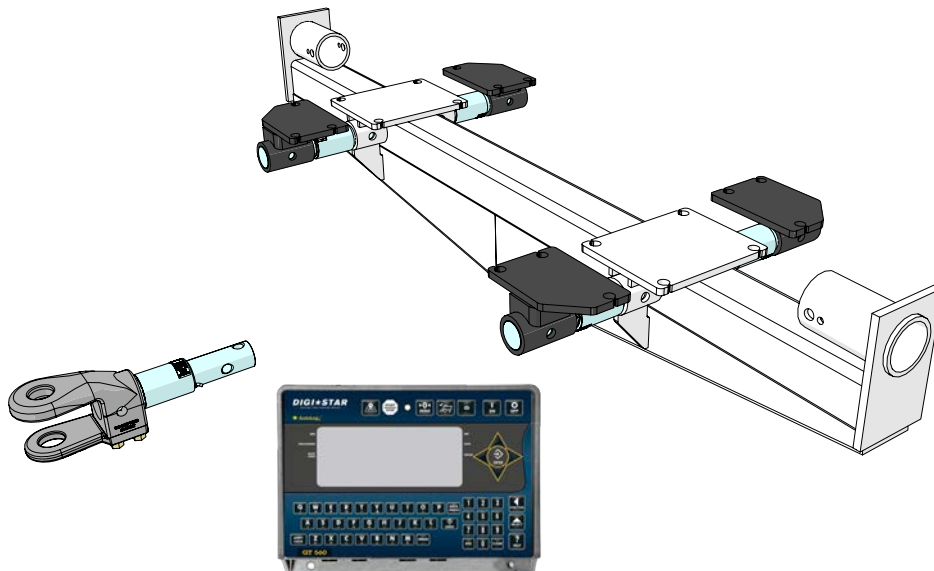


Manual

Grain Cart 5 Point Scale 2015-2020

INSTALLATION MANUAL

5PSS-1-278 - For Track Carts
5PSS-278-S - For Single Wheel Carts
WSR-1050D - For Dual Wheel Carts 1012-1222
WSR-412-4 - For Dual Wheel Carts 1312-1412



Rev. 9.30.2020

J&M Manufacturing Co, Inc

284 Railroad Street - P.O. Box 547 | Fort Recovery, OH 45846 | Ph: (419) 375-2376 | Fax: (419) 375-2708

www.jm-inc.com



Before Beginning

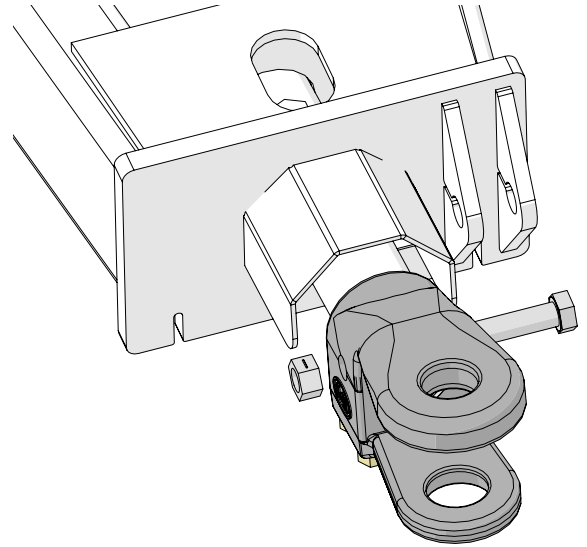
Read and understand the owners manual.

To avoid muscle strain or any other injury, use lifting aids and proper lifting techniques while moving heavy objects.

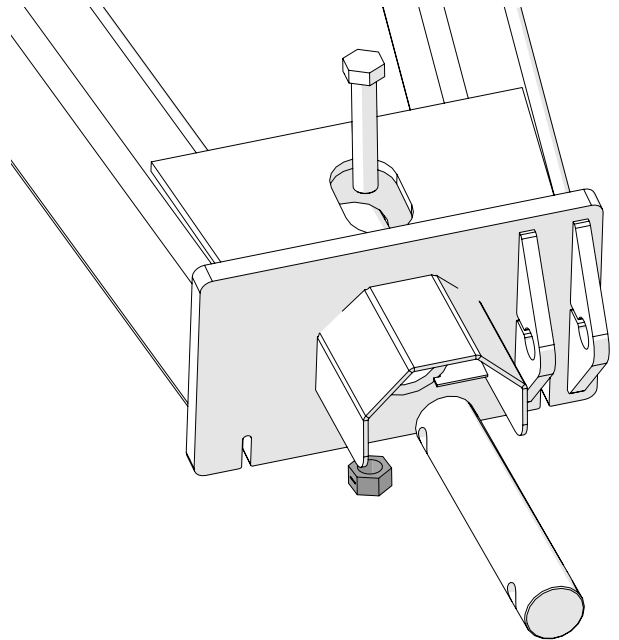
CARELESS INSTALLATION AND OPERATION CAN RESULT IN SERIOUS INJURY OR EQUIPMENT DAMAGE. READ AND UNDERSTAND ALL SAFETY PRECAUTIONS AND OPERATING INSTRUCTIONS BEFORE INSTALLING AND OPERATING THIS PRODUCT. SEE OWNERS MANUAL FOR ALL SAFETY PRECAUTIONS.

Hitch Assembly

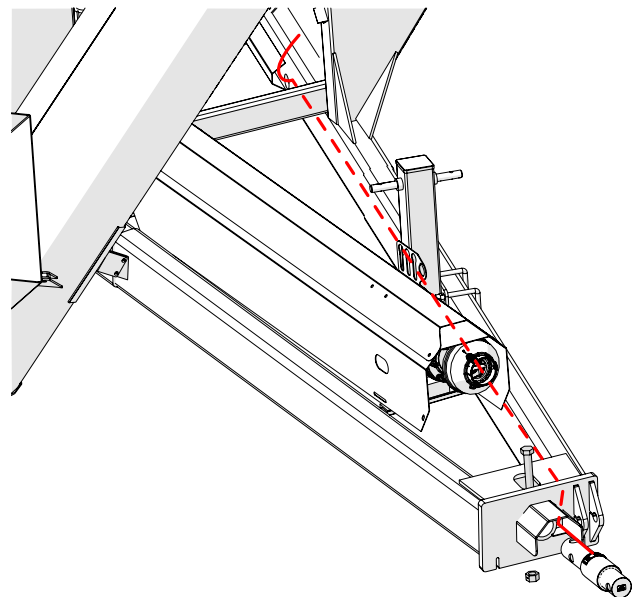
Remove the 1" x 7" Gr8 YZ Hex Bolt and 1" Gr2 Z Centerlock Hex Nut from the hitch. Detach the hitch from the 2-7/8" shaft.



Remove the 1" x 5-1/2" Gr5 Hex Bolt and 1" Centerlock Hex Nut and take out the hitch bar.

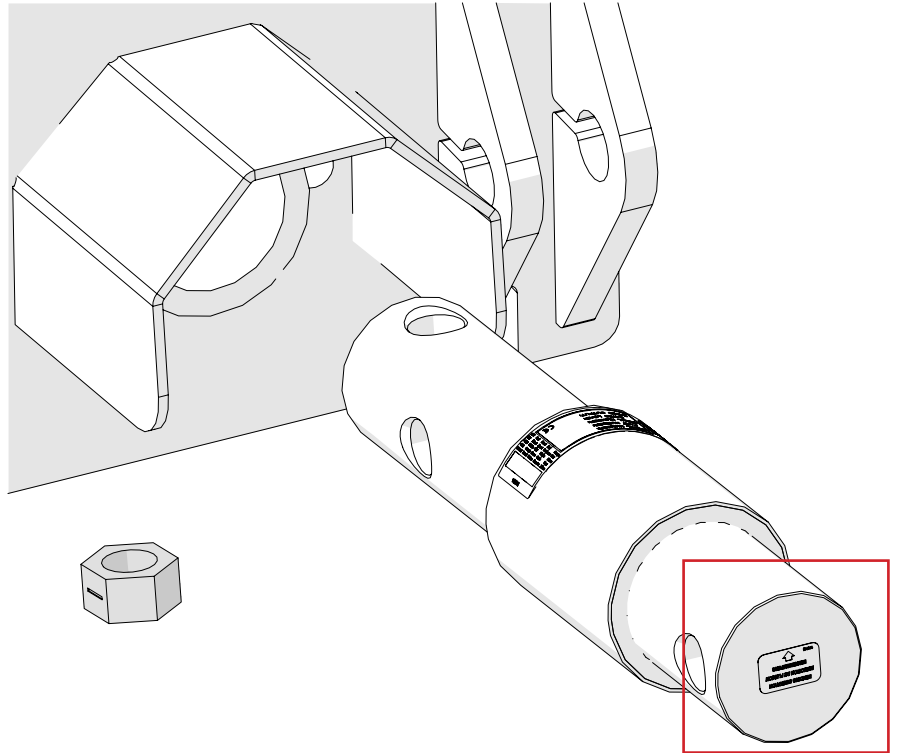


Route the Weigh Bar wire. Feed the wire through the auger side of the A-frame tubing and exit the frame through the hole located directly behind the front leg on the grain cart.

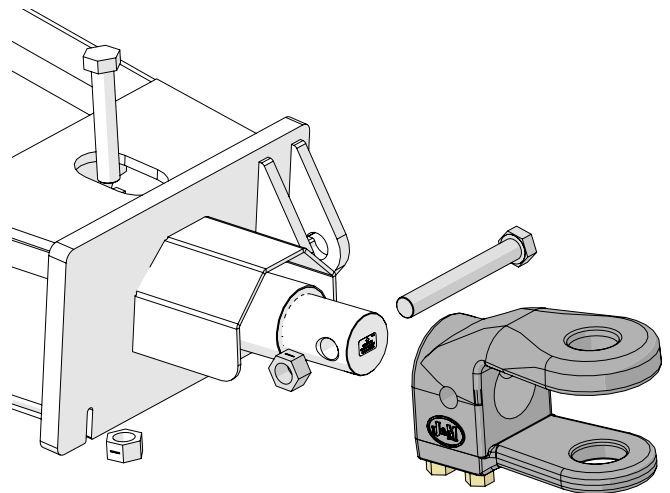


Hitch Assembly

When installing the front hitch weigh bar make sure the sticker is facing out and arrow on the sticker is pointed up.

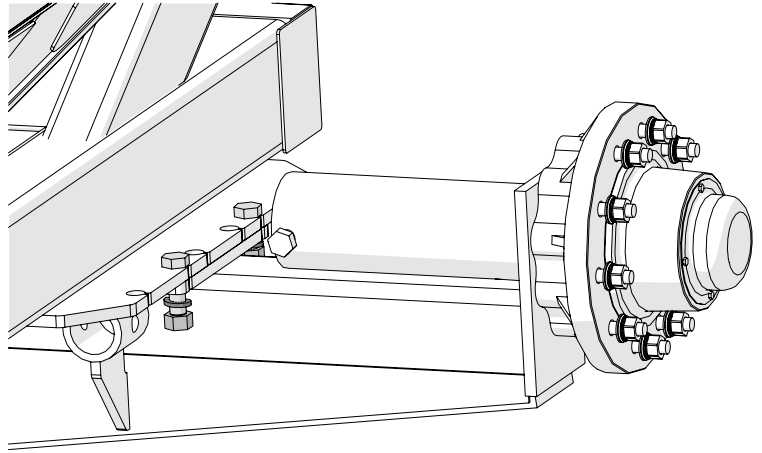


Assemble hitch weigh bar with a 1" x 5-1/2" Gr5 Hex Bolt and 1" Centerlock Hex Nut. Attach the hitch using the 1" x 7" Gr8 YZ Hex Bolt and 1" Gr2 Z Centerlock Hex Nut.

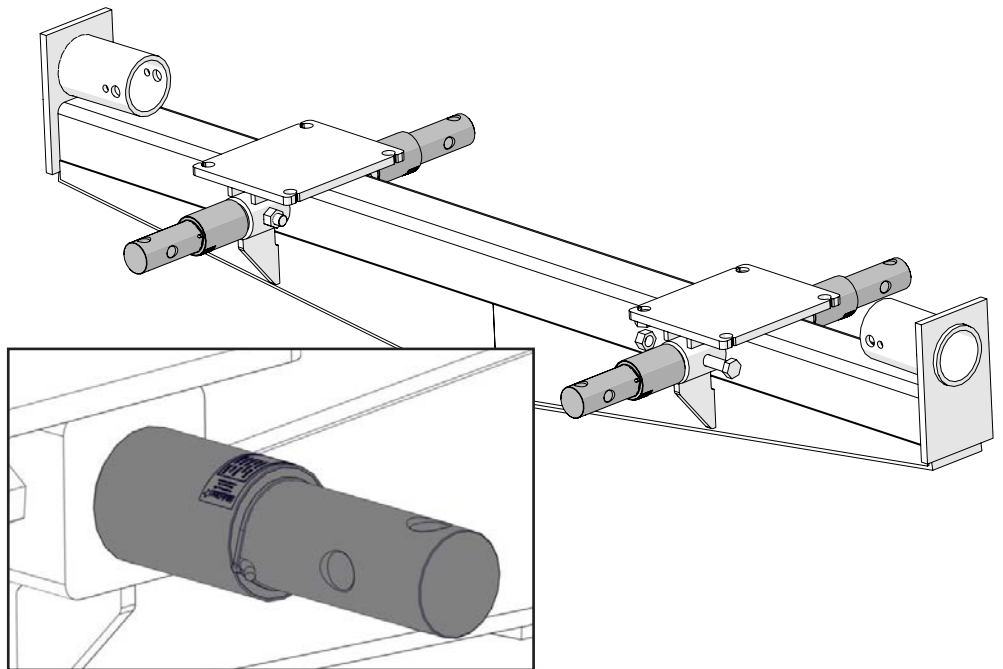


Axle Assembly

Detach the Axle Weldment by removing (8) 1" x 3" Gr5 Z Hex Bolts, (8) 1" Zinc Finish Lock Washers and (8) 1" Gr5 Z Hex Nuts.



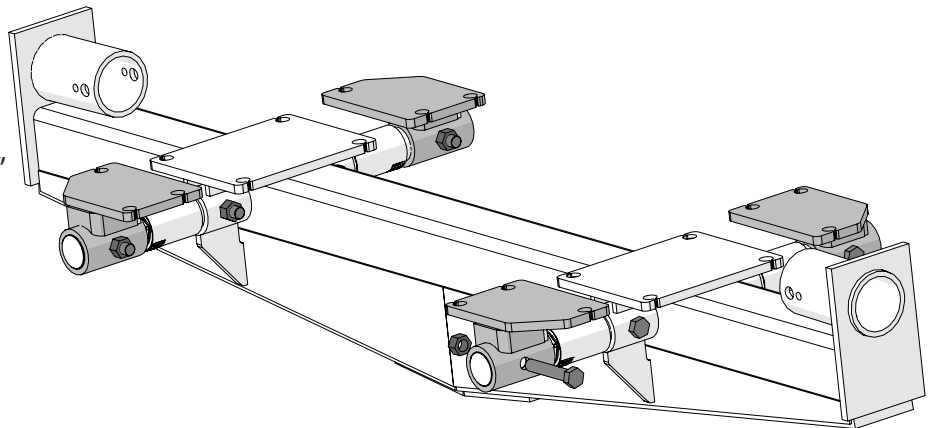
Install the (4) Axle Weigh Bars onto the Axle Weldment. Use (4) 1" x 5-1/2" Gr5 Z Hex Bolts and (4) 1" Gr5 Z Nylon Locking Hex Nuts to install the Weigh Bars. **Tighten hardware once installed.**



*Sticker with the arrow end goes into the axle and points up.

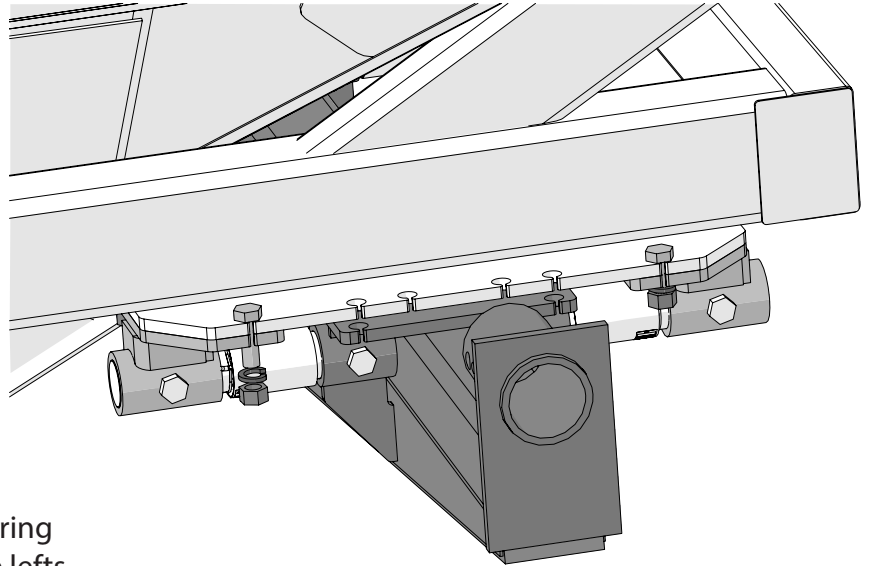
Install the Spindle Mount Weldments. There are two different mounts. The cut out corner needs to face the outside of the cart. Use a 1" x 5-1/2" Gr5 Z Hex Bolt and a 1" Gr5 Z Nylon Locking Hex Nut to install each Spindle Mount Weldment.

Tighten hardware once installed.



Axle Assembly

Attach the Axle Weldment to the A-Frame.
Use (12) 1" x 3" Gr5 Z Hex Bolts, (12) 1" Zinc
Finish Lock Washers and (12) 1" Gr5 Z Hex Nuts.
Tighten hardware once installed.



Install the wire looms around all four wires entering
the A-Frame from the Axle Weigh Bars. Feed the lefts
side Weigh bar wires through the hole located directly
above the Axle Weldment towards the front of the cart.
The wires need to come out of the hole located directly
below the left side leg.

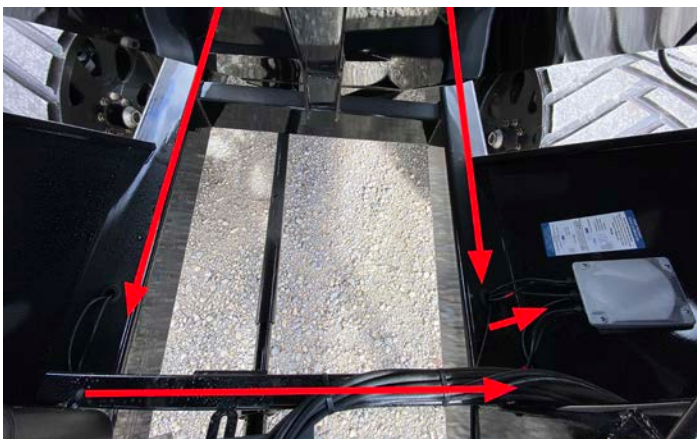
The right Weigh bar wires need to be routed down
the right leg of the A-frame, out the hole next to the
crossbrace, through the conduit, into the left A-frame
bar to the same hole the left Weigh Bar wires come out
of.

Wire Loom

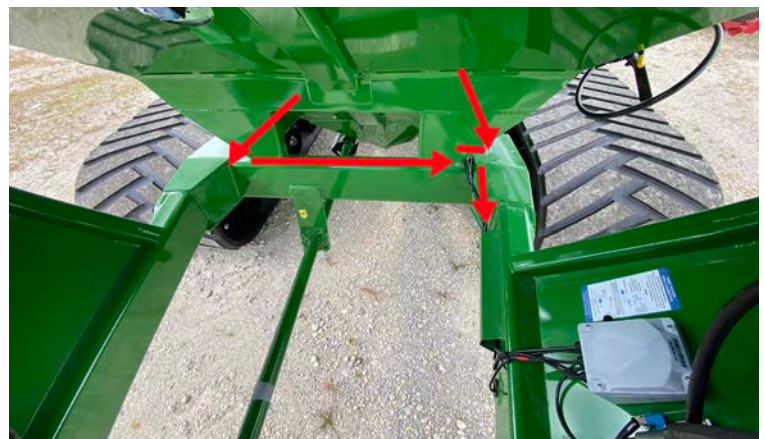


Before routing the rear Weigh Bar wires, label the
wires by wrapping electrical tape around the rear
left Weigh Bar once and the rear right Weigh Bar
twice. This will help identify wires when it is time
to install the Junction Box.

812

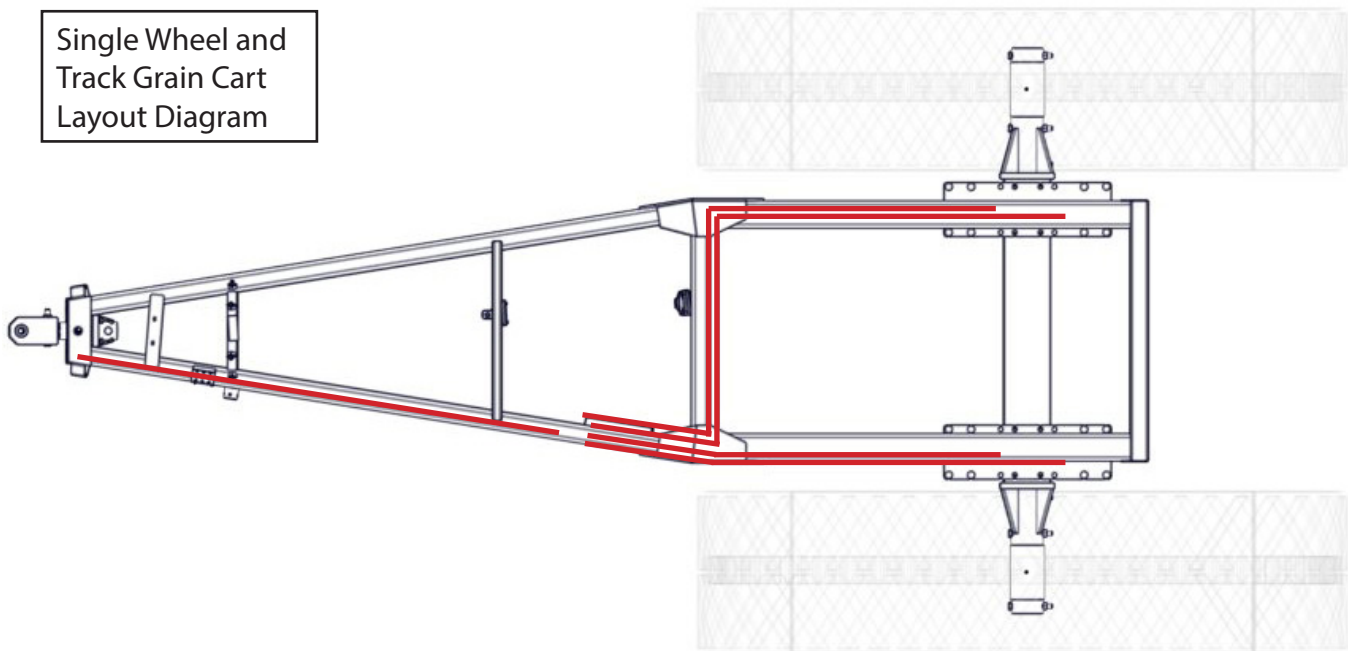


1012 and up

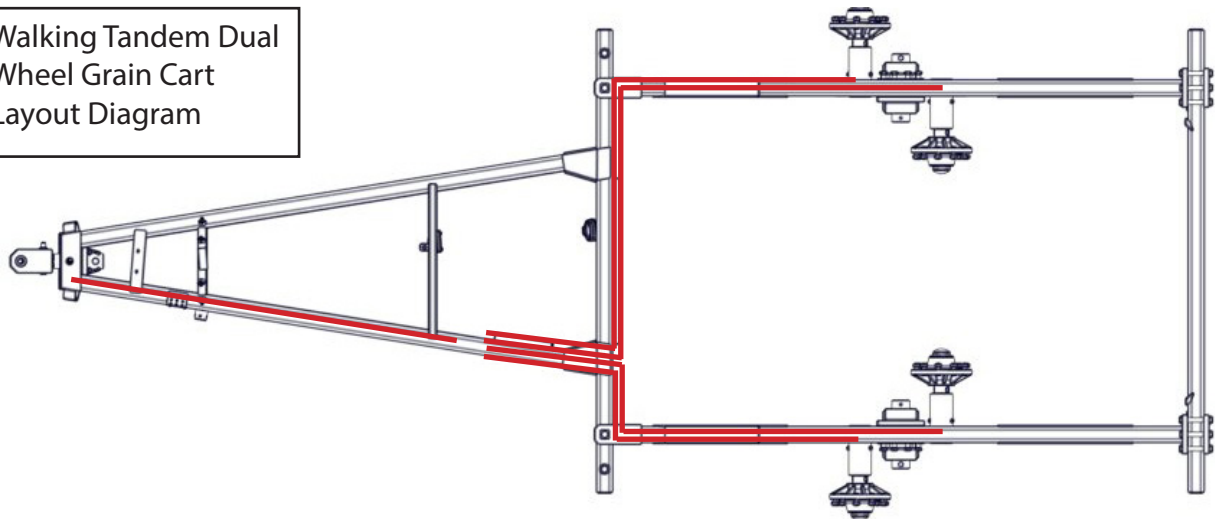


Axle Assembly

Single Wheel and
Track Grain Cart
Layout Diagram



Walking Tandem Dual
Wheel Grain Cart
Layout Diagram

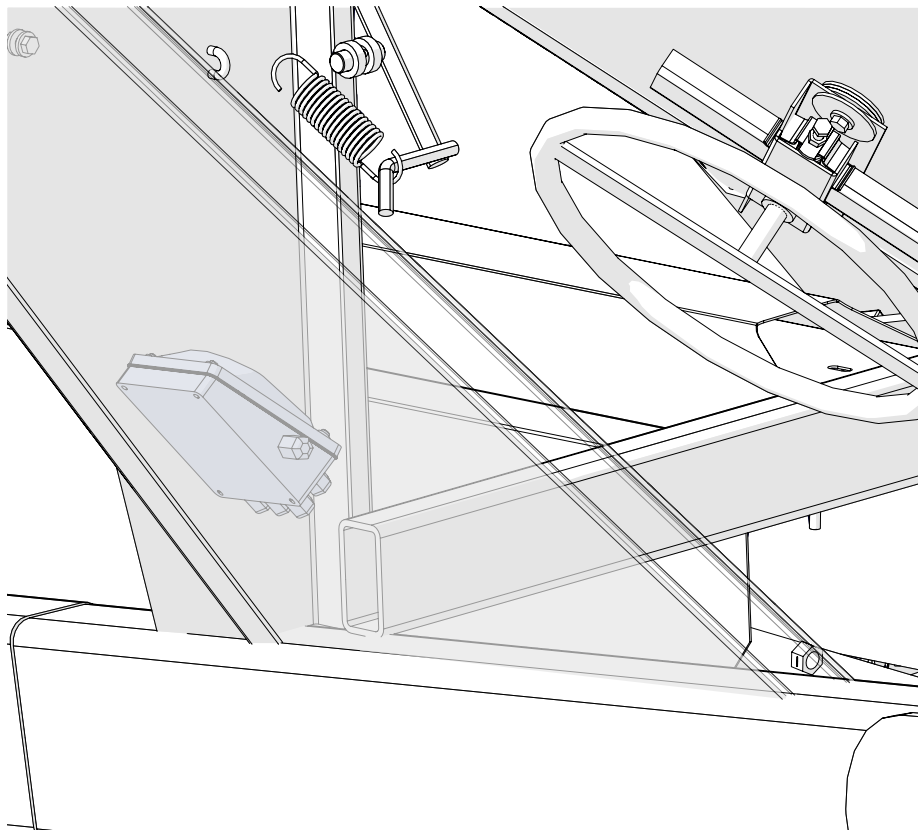


Mounting Junction Box

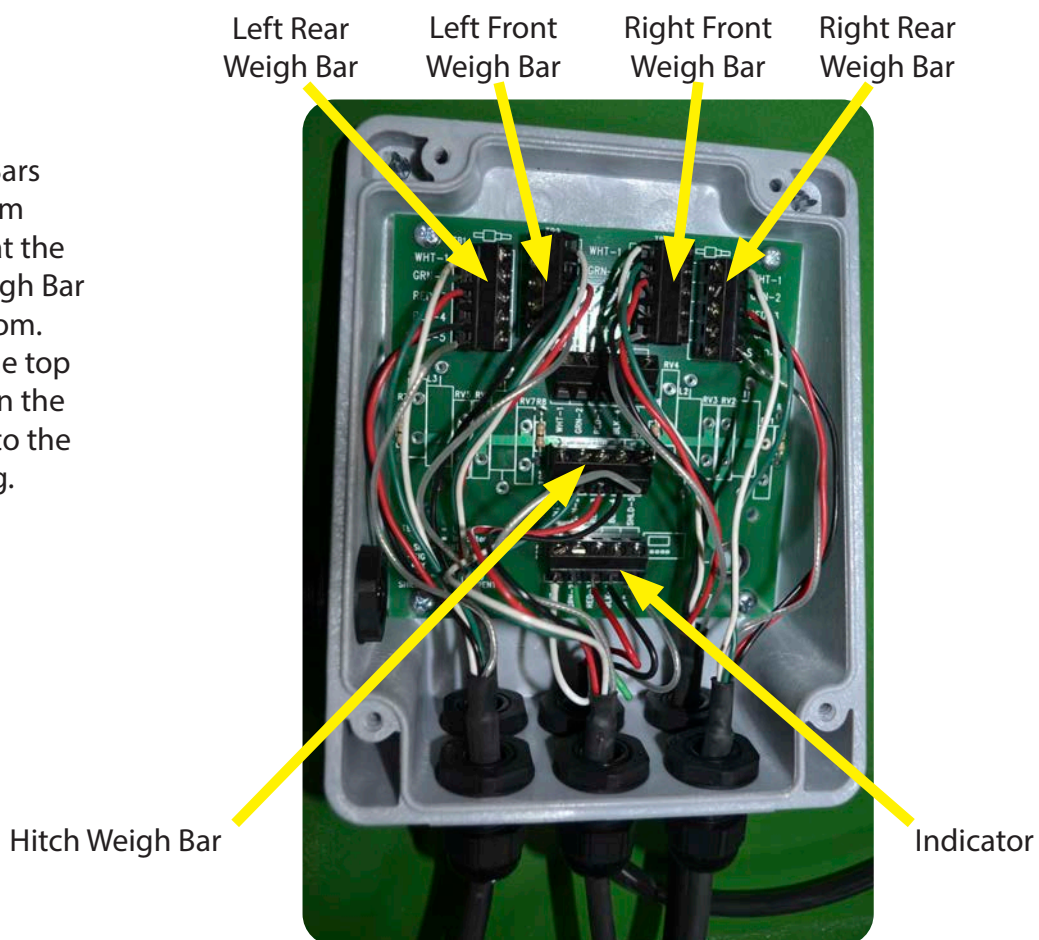
For Models 1000-1501

Install the Junction Box.

Use double sided tape and apply them to the back of the junction box. Press the junction box to the inside of the front leg as shown in the image. Placement should be about 5" above the frame tubing and nearby the hole in the frame where the wires from the weigh bars are coming out.

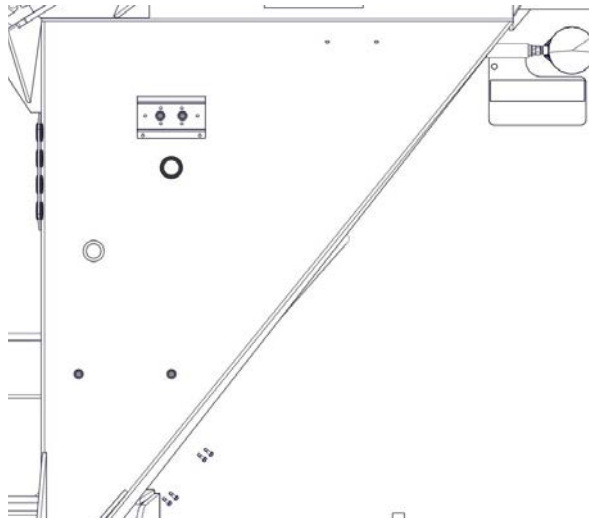


Remove cover on junction box.
Install the wires from the Weigh Bars to the Junction Box. The wires from the indicator box go to the plug at the bottom. Wires from the Hitch Weigh Bar go to the plug 2nd from the bottom. The Axle Weigh Bar wires go to the top four plugs in the order specified in the following image. Each wire goes to the corresponding color on each plug. Replace cover on junction box.



Mounting the Scale Indicator

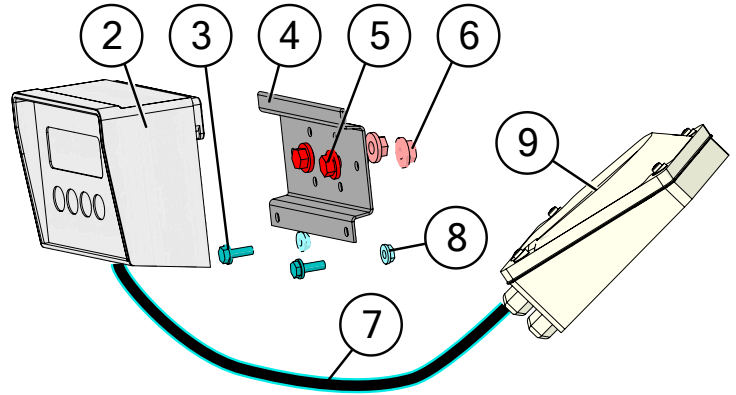
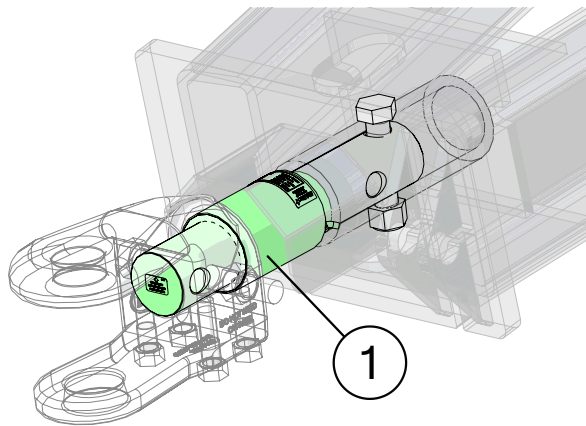
Secure the mounting bracket to the front leg using two 3/8" x 1" serrated flange hex nuts and bolts located in the image below. Slide the Indicator across the top of the mounting bracket and secure using two #10 hex bolts and nuts. **Tighten hardware once finished.**



Connect the Junction Box Cable to the port on the bottom of the indicator.

To connect the Power Cord to the Indicator Box, attach screw plug end of the Power Cord into the power port of the Indicator box. Connect to on of the power ports from the wiring harness. Be sure any additional wires provided by the Power Cord are properly stored and secured.

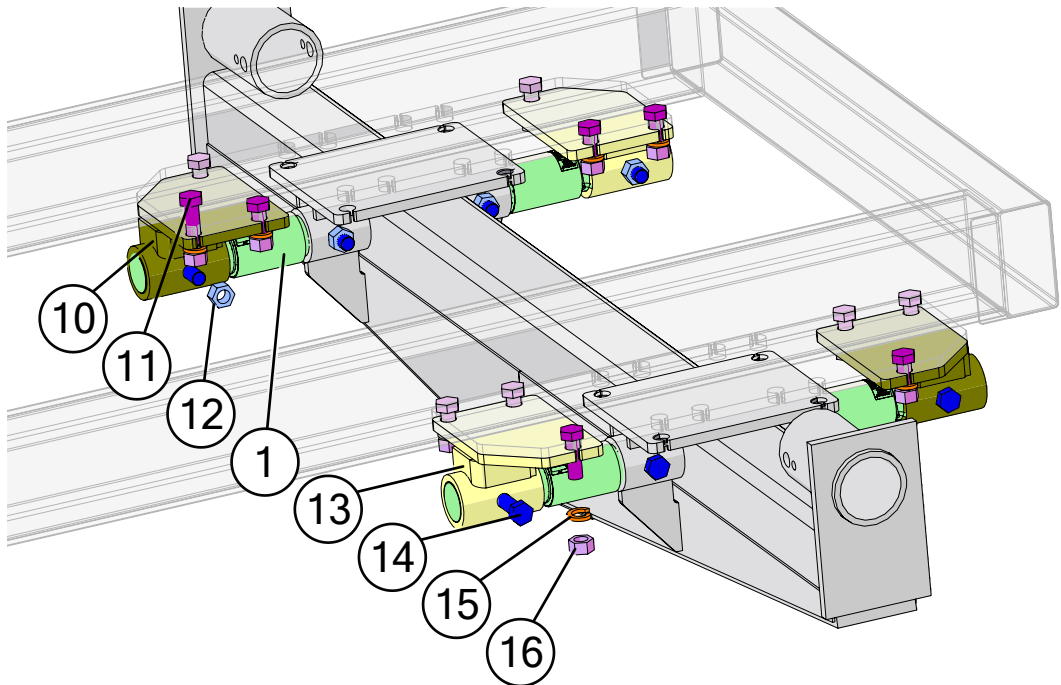
5-Point Scale System for Single Wheel Carts: 5PSS-278-S



GT 400

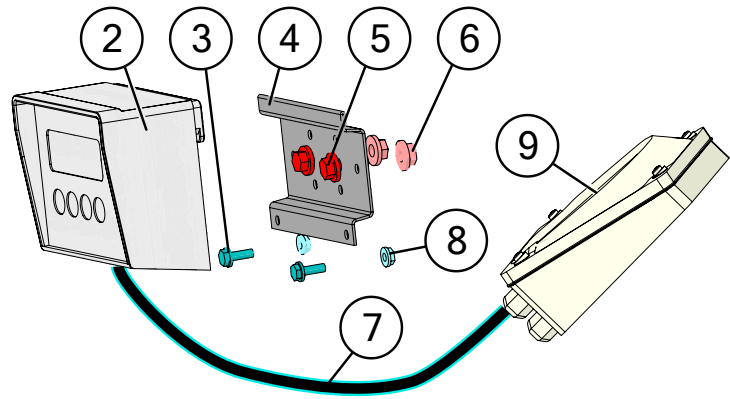
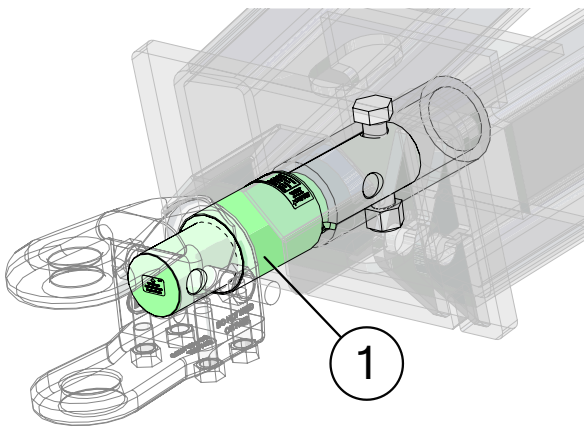


GT 560



Description	Part No.
1 2-7/8" Digi-Star Weigh Bar, 1" Pin Hole (278WB-T1)	JM0000355
2 GT 400 Digi-Star Scale Display Monitor	JM0019040
2 GT 560 Digi-Star Scale Display Monitor	JM0044177
3 1/4"-20 x 3/4" Gr5 Z Hex Bolt	JM0001507
4 GT 560 Scale Monitor Display Bracket	JM0046976
4 GT 400 Scale Monitor Display Bracket	JM0000361
5 3/8"-16 x 1" Gr5 Z SF Hex Bolt	JM0002092
6 3/8"-16 Gr5 Z SF Hex Nut	JM0002152
7 8' Cable from J-Box to Indicator (Digi-Star)	JM0047238
8 1/4"-20 Gr5 Z SF Hex Nut	JM0001630
9 Digi-Star 6-Point Junction Box (JB-5)	JM0019038
10 2-7/8" Weigh Bar Weldment, Rear Left, Front Right (6-1/8" Spool)	JM0000354
11 1"-8 x 3" Gr5 Z Hex Bolt	JM0016686
12 1"-8 Gr2 Z Centerlock Hex Nut	JM0002149
13 2-7/8" Weigh Bar Weldment, Rear Right, Front Left (6-1/8" Spool)	JM0018985
14 1"-8 x 5-1/2" Gr5 Z Hex Bolt	JM0002110
15 1" Zinc Finish Lock Washer	JM0019203
16 1"-8 Gr5 Z Hex Nut	JM0002127
17 30' Extension Cable Kit (Load Cell and Power) (ECI-3)	JM0041218
18 Flash Drive Memory Stick for Digi-Star GT 560 (114991)	JM0025819

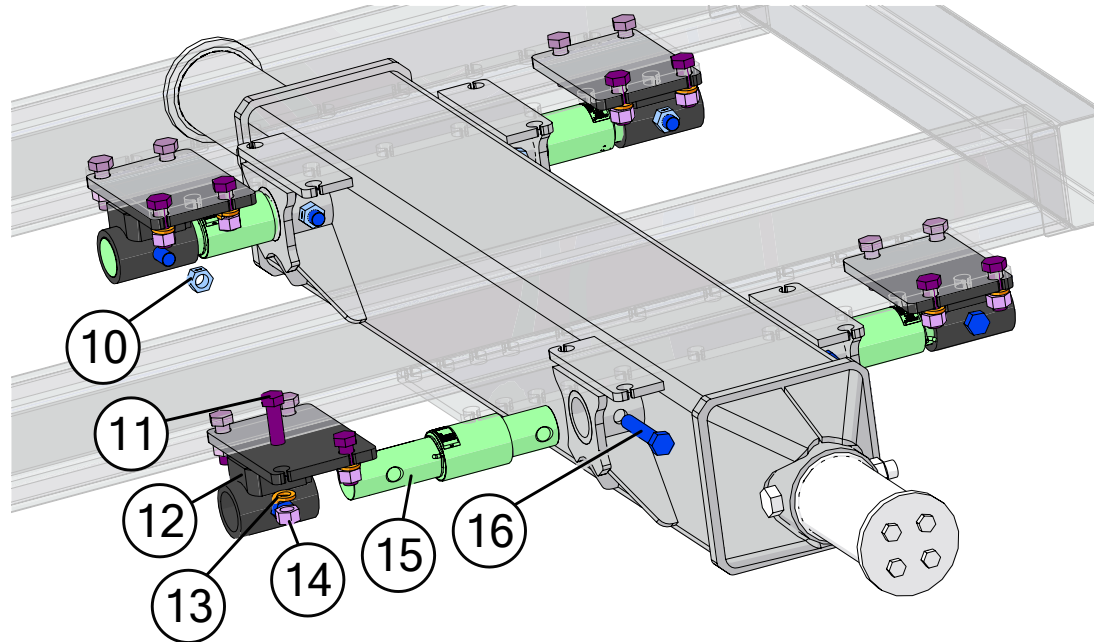
5-Point Scale System for Tracks: 5PSS-1-278



GT 400

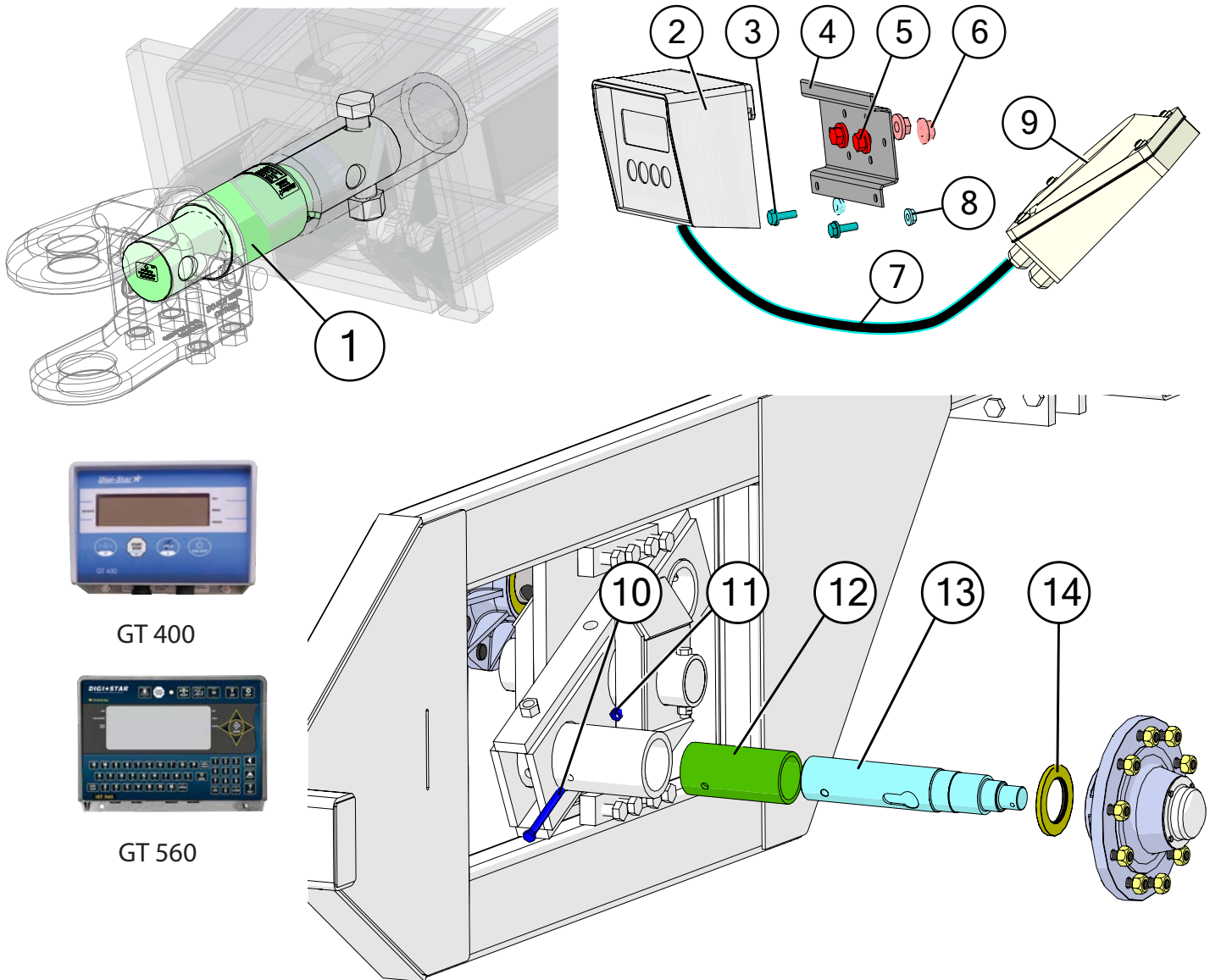


GT 560



Description	Part No.
1 2-7/8" Digi-Star Weigh Bar, 1" Pin Hole (278WB-T1)	JM0000355
2 GT 400 Digi-Star Scale Display Monitor	JM0019040
2 GT 560 Digi-Star Scale Display Monitor	JM0044177
3 1/4"-20 x 3/4" Gr5 Z Hex Bolt	JM0001507
4 GT 560 Scale Monitor Display Bracket	JM0046976
4 GT 400 Scale Monitor Display Bracket	JM0000361
5 3/8"-16 x 1" Gr5 Z SF Hex Bolt	JM0002092
6 3/8"-16 Gr5 Z SF Hex Nut	JM0002152
7 8' Cable from J-Box to Indicator (Digi-Star)	JM0047238
8 1/4"-20 Gr5 Z SF Hex Nut	JM0001630
9 Digi-Star 6-Point Junction Box (JB-5)	JM0019038
10 1"-8 Gr2 Z Centerlock Hex Nut	JM0002149
11 1"-8 x 3" Gr5 Z Hex Bolt	JM0016686
12 2-7/8" Weigh Bar Weldment for Track Beam (6-1/8" Spool)	JM0036176
13 1" Zinc Finish Lock Washer	JM0019203
14 1"-8 Gr5 Z Hex Nut	JM0002127
15 1"-8 x 5-1/2" Gr5 Z Hex Bolt	JM0002110
16 30' Extension Cable Kit (Load Cell and Power) (ECI-3)	JM0041218
17 Flash Drive Memory Stick for Digi-Star GT 560 (114991)	JM0025819

Scale System for Dual Wheel Carts 1012-1222: WSR-1050D



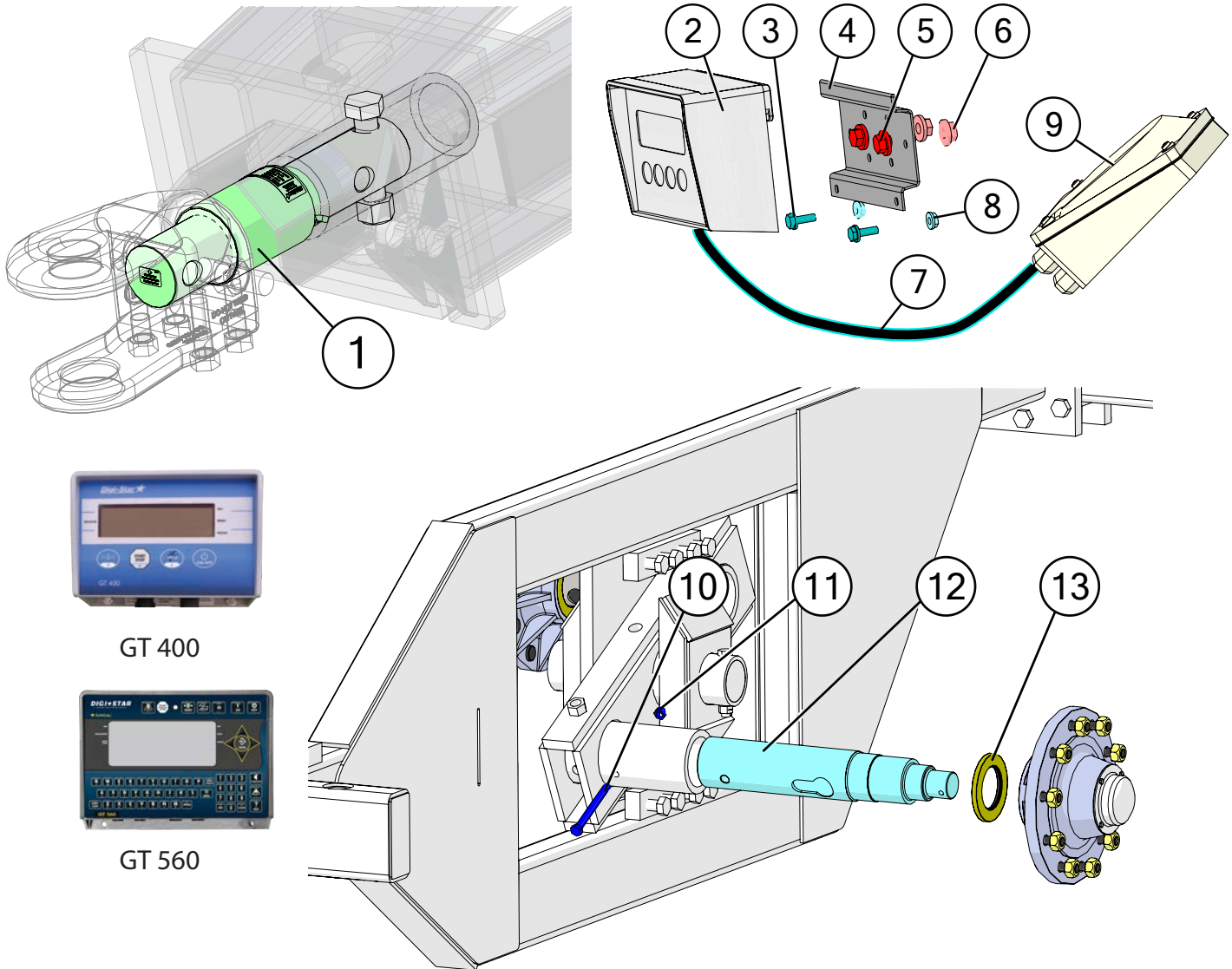
GT 400



GT 560

Description	Part No.
1 2-7/8" Digi-Star Weigh Bar, 1" Pin Hole (278WB-T1)	JM0000355
2 GT 400 Digi-Star Scale Display Monitor	JM0019040
2 GT 560 Digi-Star Scale Display Monitor	JM0044177
3 1/4"-20 x 3/4" Gr5 Z Hex Bolt	JM0001507
4 GT 560 Scale Monitor Display Bracket	JM0046976
4 GT 400 Scale Monitor Display Bracket	JM0000361
5 3/8"-16 x 1" Gr5 Z SF Hex Bolt	JM0002092
6 3/8"-16 Gr5 Z SF Hex Nut	JM0002152
7 8' Cable from J-Box to Indicator (Digi-Star)	JM0047238
8 1/4"-20 Gr5 Z SF Hex Nut	JM0001630
9 Digi-Star 6-Point Junction Box (JB-5)	JM0019038
10 5/8"-11 x 6.5" Gr8 YZ Hex Bolt	JM0050351
11 5/8"-11 Gr2 Z Centerlock Hex Nut	JM0002146
12 3-3/4" ID x 4-1/2" OD x 9-3/8" Adapter Pipe Tubing (ATP-375-GS)	JM0021453
13 3-3/4" Digi-Star Weigh Spindle (375WS)	JM0021451
14 Seal (3-3/4" ID, 6" OD) for Hub with Scales (37605SA)	JM0021456
15 30' Extension Cable Kit (Load Cell and Power) (ECI-3)	JM0041218
16 Flash Drive Memory Stick for Digi-Star GT 560 (114991)	JM0025819

Scale System for Dual Wheel Carts 1012-1222: WSR-412-4



Description	Part No.
1 2-7/8" Weigh Bar, Weigh-Tronix (1" Hole) (278WB)	JM0019969
2 GT 400 Digi-Star Scale Display Monitor	JM0019040
2 GT 560 Digi-Star Scale Display Monitor	JM0044177
3 1/4"-20 x 3/4" Gr5 Z Hex Bolt	JM0001507
4 GT 560 Scale Monitor Display Bracket	JM0046976
4 GT 400 Scale Monitor Display Bracket	JM0000361
5 3/8"-16 x 1" Gr5 Z SF Hex Bolt	JM0002092
6 3/8"-16 Gr5 Z SF Hex Nut	JM0002152
7 15' Cable from J-Box to Indicator (Weigh-Tronix)	JM0050445
8 1/4"-20 Gr5 Z SF Hex Nut	JM0001630
9 Avery Weigh-Tronix 5-Point Junction Box (JB-5-WT)	JM0019960
10 5/8"-11 x 6.5" Gr8 YZ Hex Bolt	JM0050351
11 5/8"-11 Gr2 Z Centerlock Hex Nut	JM0002146
12 4-1/2" Weigh-Tronix Weigh Spindle (AWT27-500002) (450WTS)	JM0019970
13 Seal (4-1/4" ID, 6" OD) for Hub (CR-43771)	JM0018955
14 30' Extension Cable Kit (Load Cell and Power) (ECI-3)	JM0041218
15 Flash Drive Memory Stick for Digi-Star GT 560 (114991)	JM0025819