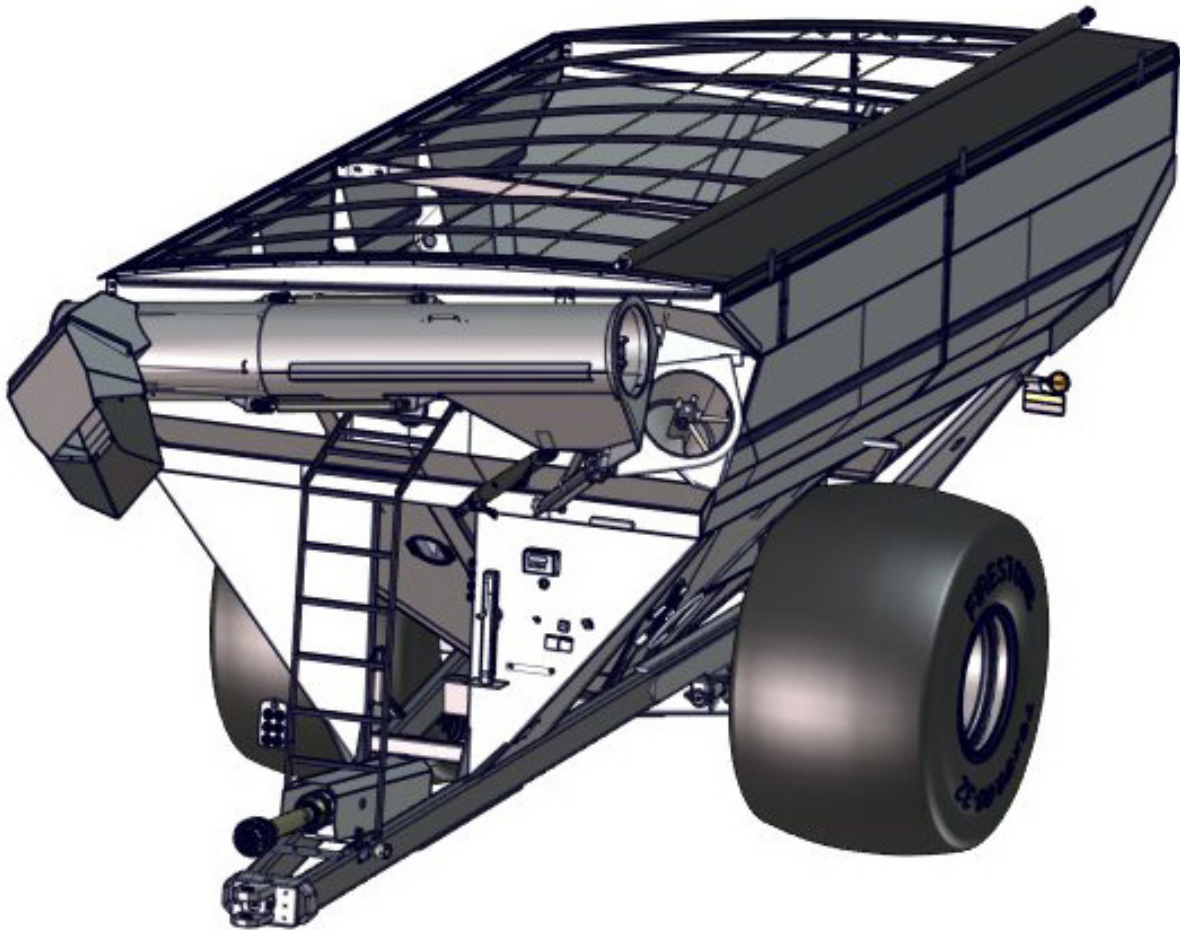




Manual

GRAIN CART OPERATOR'S MANUAL

MODEL ***1326***



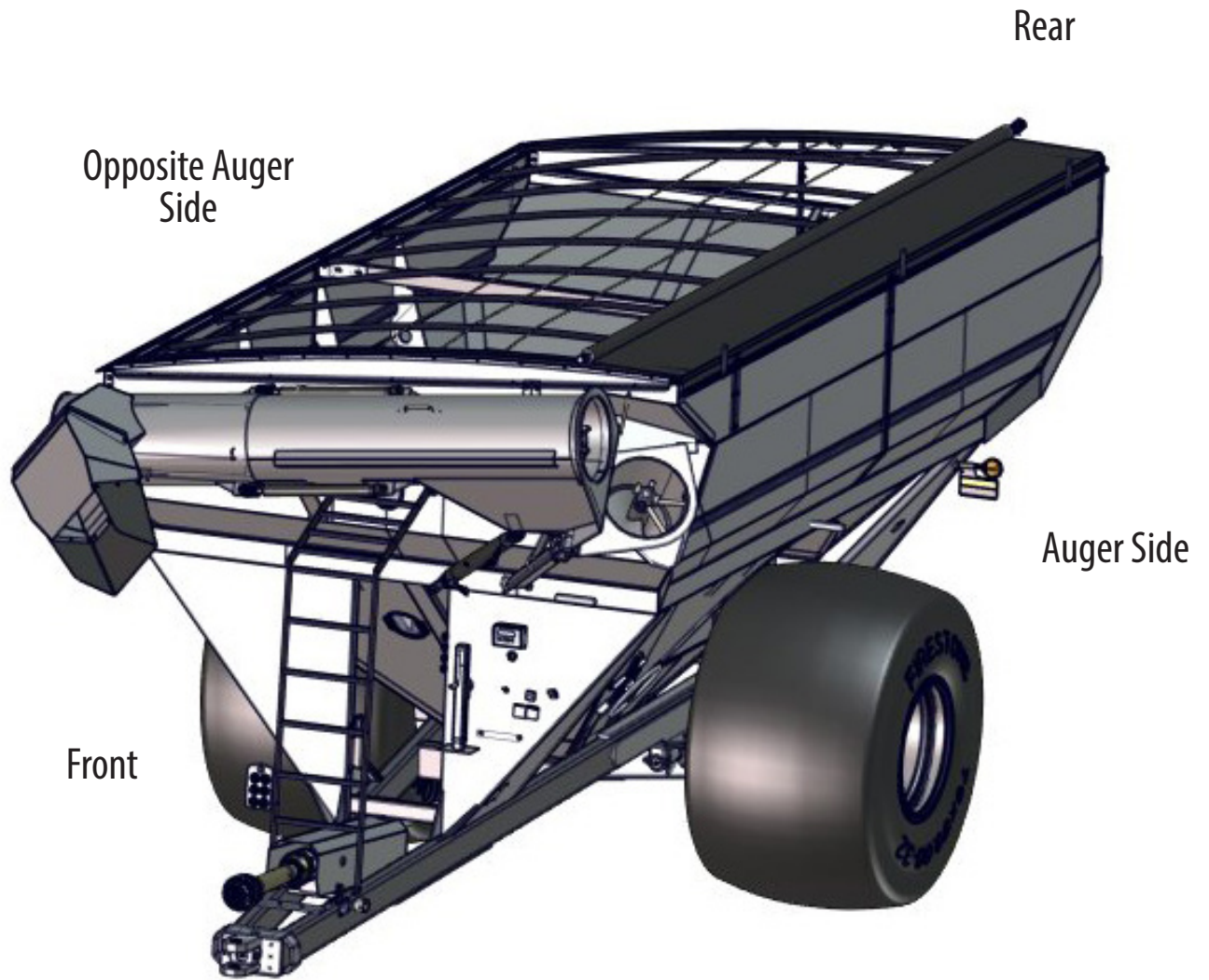
Rev. 5.8.2019

J&M Manufacturing Co, Inc

284 Railroad Street - P.O. Box 547 | Fort Recovery, OH 45846 | Ph: (419) 375-2376 | Fax: (419) 375-2708

www.jm-inc.com

Stance



Dealer Pre-Delivery Instructions Grain Cart



WHEEL NUTS

Check ALL wheel nuts for correct torque setting. (3/4"-400 Ft-Lbs, 22mm-640 Ft-Lbs) Tighten as needed. Re-Check wheel nut torque settings during initial break in period (during 1st, 2nd, 3rd loads, etc.), then periodically afterwards (every 10 hours of use for first 40 hours). Keep checking wheel nut settings until wheel nuts do not loosen. If wheel nuts loosen and damage the surface of the wheel center, it will be impossible to keep them tight. Failure to keep the wheel nuts tight could cause considerable damage to the grain cart and surrounding. It is the Dealer's responsibility to have wheel nuts torqued to specification before delivery. Damage caused by failure to keep the wheel nuts tight is not warrantable.



HITCH

Determine the hitch style of cart to be compatible with tractor. Tractor with hammer strap (clevis type) should be used with grain carts equipped with a single prong (spade) hitch. Tractors equipped with a single prong hitch (no hammer strap) should be used with grain carts equipped with a double prong (clevis) hitch.



Be sure the tractor pin is at least 1/4" smaller in diameter than the pin hole in the grain cart hitch to ensure enough free movement when traversing through uneven terrain.



POWER TAKE-OFF

Check for adequate clearance between telescoping PTO and tractor hitch. Suggested clearance is 7 inches.



Check telescoping PTO for adequate extension. With the tractor hitched to the cart on flat level ground, the PTO should have approximately 10 inches extended from the collapsed (shortest) length.



UPPER AND LOWER AUGERS

Raise the auger to the unload position. Run the auger from the PTO or optional hydraulic motor. If the top auger is misaligned with the bottom auger, you will hear a 'bang' as the upper auger realigns itself with the lower auger. This is normal as the top auger has dropped to engage the lower auger. Be sure that the top auger engages the lower auger. Check bearing at top of auger. Be sure to have approximately 1/8" to 3/16" of an inch gap under/between top auger bearing. Some models have bearings inside and some models have bearings outside of upper auger housing. If there is no gap under the bearing, or the gap is greater than 1/8" to 3/16", the bearing needs adjusted.



HYDRAULIC CYLINDERS AND HOSES

Run all functions of the hydraulic cylinders and inspect fittings and seals for leakage. (use cardboard or wood to check for hydraulic leaks)

(Continued on Next Page)



Dealer Pre-Delivery Instructions Grain Cart



GEARBOX

Check the gearbox oil level. For the process of checking the oil in your gearboxes, refer to "Lubrication Service Schedule" in this manual. Add SAE 80W-90 lubricant as necessary.



LIGHTING & SAFETY FEATURES

Check the tractor lighting system for functions. Plug the grain cart wire harness into the tractor receptacle and check the cart lighting for correct functions. Note: The auger spout light is activated through a mercury switch located at the harness connection under the discharge spout. The auger spout light should automatically turn on when the auger is in the unload position, and turn off when the auger is returned to the storage position. If the auger spout light does not turn on or shut off properly, the mercury switch may need repositioned.



Check that the safety chains are properly installed. Use bolt-torque chart listed in operator's manual for correct torque value.



TIRES

All tires need to be inflated to the specified air pressure given in the "Tire Pressure" section on the "Initial Operation & Maintenance" page of this manual.

Table Of Contents

6	To the Dealer
7	General Information
8	Specifications and Dimensions
8	Walking Tandem Dual Wheels
8	Single Wheels
8	Tracks
9	Bolt Torque Chart
10	Decals
12	Safety Rules
13	Initial Operation and Maintenance
14	Operating Instructions
15	Adjusting Row Spacing for Walking Tandem Duals
16	Lubrication Service Schedule
17	Routine Maintenance
17	Troubleshooting
18	Adjusting the Lower and Upper Flighting
19	Removing Dirt from the Restrictors on the Hydraulic Cylinder
19	Storage Preparation
Repair Parts List and Diagrams		
19	Wheel Rims and Tires
20	Hub & Spindle Assembly 250-10 (Single Wheels)
21	Hub & Spindle Assembly 550-20 (Single Wheels-20 Bolt Hubs)
22	Hub & Spindle Assembly W-881 (Walking Tandem Dual Wheels)
23	Power Take-Off (PTO) Shaft Assembly - Comer
24	Power Take-Off (PTO) Shaft Assembly - Weasler
25	130 Degree Gearbox Assembly (Weasler)
26	Hitch and Jack Assembly
27	Driveline Assembly
28	Upper & Lower Auger Assembly
29	Lift Cylinder
29	Flow Control Spout
30	Lights and Wiring
31	Auto-Gate Shut-Off Assembly
31	Auto-Gate Shut-Off Wiring Schematic
32	5-Point Scale System for Single Wheel Bolt on Axles
33	5-Point Scale System for Tracks
34	5-Point Scale System for Walking Tandem Dual Wheels
35	Walking Tandem Dual Wheel Assembly
36	Miscellaneous
37	Sideboards
38	Door Wheel Assembly
38	Inspection Windows
39	Spring Return Assembly
40	Roll Tarp Assembly

To the Dealer

Read manual instructions and safety rules. Make sure all items on the Dealer's Pre-Delivery and Delivery Check Lists are completed before releasing equipment to the owner.

The dealer must complete the Warranty Registration found on the Dealer Portal website located at dealer.jm-inc.com. and return it to J&M Mfg. Co., Inc. at the address indicated on the form. Warranty claims will be denied if the Warranty Registration has not been submitted.

EXPRESS WARRANTY:

J&M Mfg. Co., Inc. warrants against defects in construction or materials for a period of ONE year. We reserve the right to inspect and decide whether material or construction was faulty or whether abuse or accident voids our guarantee.

Warranty service must be performed by a dealer or service center authorized by J&M Mfg. Co., Inc. to sell and/or service the type of product involved, which will use only new or remanufactured parts or components furnished by J&M Mfg. Co., Inc. Warranty service will be performed without charge to the purchaser for parts or labor based on the Warranty Labor Times schedule. Under no circumstance will allowable labor times extend beyond the maximum hours indicated in the Warranty Labor Times schedule for each warranty procedure. The purchaser will be responsible, however, for any service call and/or transportation of the product to and from the dealer or service center's place of business, for any premium charged for overtime labor requested by the purchaser, and for any service and/or maintenance not directly related to any defect covered under the warranty. Costs associated with equipment rental, product down time, or product disposal are not warrantable and will not be accepted under any circumstance.

Each Warranty term begins on the date of product delivery to the purchaser. Under no circumstance will warranty be approved unless (i) the product warranty registration card has been properly completed and submitted to the equipment manufacturer, and (ii) a warranty authorization number has been issued by the equipment manufacturer. This Warranty is effective only if the warranty registration card is returned within 30 days of purchase.

This Warranty does not cover a component which fails, malfunctions or is damaged as a result of (i) improper modification or repair, (ii) accident, abuse or improper use, (iii) improper or insufficient maintenance, or (iv) normal wear or tear. This Warranty does not cover products that are previously owned and extends solely to the original purchaser of the product. Should the original purchaser sell or otherwise transfer this product to a third party, this Warranty does not transfer to the third party purchaser in any way. J&M Mfg. Co., Inc. makes no Warranty, express or implied, with respect to tires or other parts or accessories not manufactured by J&M Mfg. Co., Inc. Warranties for these items, if any, are provided separately by their respective manufacturers.

THIS WARRANTY IS EXPRESSLY IN LIEU OF ALL OTHER WARRANTIES OR CONDITIONS, EXPRESS, IMPLIED OR STATUTORY, INCLUDING ANY IMPLIED WARRANTY OF MERCHANTABILITY OR FITNESS FOR PARTICULAR PURPOSE.

In no event shall J&M Mfg. Co., Inc. be liable for special, direct, incidental or consequential damages of any kind. The exclusive remedy under this Warranty shall be repair or replacement of the defective component at J&M Mfg. Co., Inc.'s option. This is the entire agreement between J&M Mfg. Co., Inc. and the Owner about warranty and no J&M Mfg. Co., Inc. employee or dealer is authorized to make any additional warranty on behalf of J&M Mfg. Co., Inc.

The manufacturer reserves the right to make product design and material changes at any time without notice. They shall not incur any obligation or liability to incorporate such changes and improvements in products previously sold to any customer, nor shall they be obligated or liable for the replacement of previously sold products with products or parts incorporating such changes.

SERVICE:

The equipment you have purchased has been carefully manufactured to provide dependable and satisfactory use. Like all mechanical products, it will require cleaning and maintenance. Lubricate the unit as specified. Observe all safety information in this manual and safety signs on the equipment.

For service, your authorized J&M dealer has trained mechanics, genuine J&M service parts, and the necessary tools and equipment to handle all your needs.

Use only genuine J&M service parts. Substitute parts may void warranty and may not meet standards required for safety and satisfactory operation. Record the model number and serial number of your equipment in the spaces provided:

Model No:1326 **Serial No:** _____ **Date of Purchase:** _____

Purchased From: _____

Provide this information to your dealer to obtain correct repair parts.

General Information

TO THE OWNER:

The purpose of this manual is to assist you in operating and maintaining your grain cart in a safe manner. Read it carefully. It furnishes information and instructions that will help you achieve years of dependable performance and help maintain safe operating conditions. If this machine is used by an employee or is loaned or rented, make certain that the operator(s), prior to operating:

1. Is instructed in safe and proper use.
2. Reviews and understands the manual(s) pertaining to this machine.

Throughout this manual, the term **IMPORTANT** is used to indicate that failure to observe can cause damage to equipment. The terms **CAUTION**, **WARNING** and **DANGER** are used in conjunction with the Safety-Alert Symbol (a triangle with an exclamation mark) to indicate the degree of hazard for items of personal safety. When you see this symbol, carefully read the message that follows and be alert to the possibility of personal injury or death.



This Safety-Alert symbol indicates a hazard and means
ATTENTION! BECOME ALERT! YOUR SAFETY IS INVOLVED!



DANGER

Indicates an imminently hazardous situation that, if not avoided, will result in death or serious injury.



WARNING

Indicates a potentially hazardous situation that, if not avoided, could result in death or serious injury, and includes hazards that are exposed when guards are removed.



CAUTION

Indicates a potentially hazardous situation that, if not avoided, may result in minor or moderate injury.

IMPORTANT

Indicates that failure to observe can cause damage to equipment.

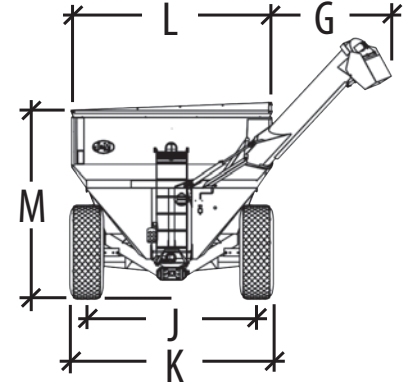
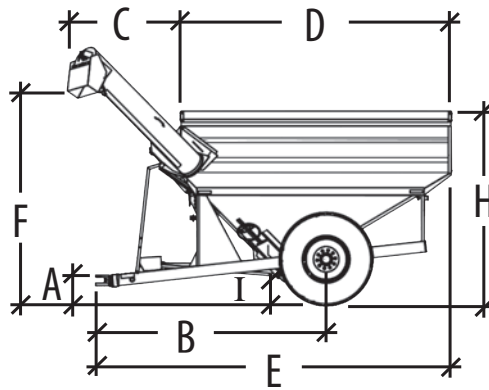
NOTE

Indicates helpful information.

Specifications and Dimensions

Single Wheels

SPECIFICATIONS	
Single Wheel Option	
Capacity	1,325 Bushels
Auger, One Vertical	22"
Unload Time (minutes)	2.2 minutes
Wheels (2)	32x36 Heavy or 44x32
Tires (2)	IF1050/50R32 or IF1250/50R32
Hubs (2)	10 Bolt or 20 Bolt
Spindles (2)	6" Diameter
Tongue Weight	
Empty	2,400 lbs.
Loaded	4,800 lbs.
Total Weight (approx.)	16,100 lbs.

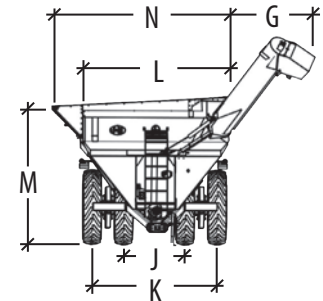
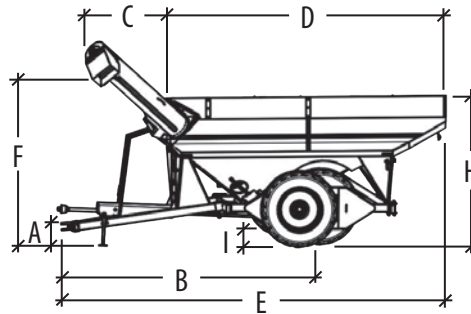


DIMENSIONS

Model	A	B	C	D	E	F	G	H	I	J	K	L	M
1326	1'-6"	21'-10"	8'-6"	25'-6"	34'-5"	14'-2"	7'-6"	12'-3"	1'-5"	10'-0"	11'-9"	11'-4"	N/A

Walking Tandem Dual Wheels

Walking Tandem Dual Wheels Option	
Capacity	1,325 Bushels
Wheels (4)	18x42
Tires (4)	IF 520/85R42 or 520/85R42
Spindles (4)	4-1/2" Diameter
Total Weight (approx.)	19,100 lbs.

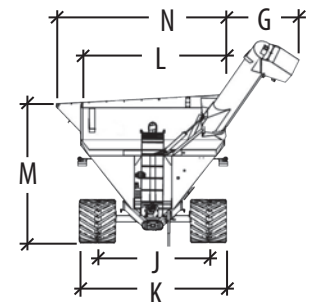
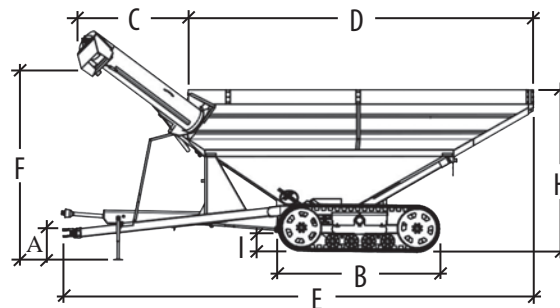


DIMENSIONS

Model	A	B	C	D	E	F	G	H	I	J	K	L	M
1326	1'-6"	21'-9"	8'-6"	25'-6"	34'-5"	14'-2"	7'-6"	12'-2"	1'-5"	6'-0"	10'-0"	11'-9"	11'-4"

Tracks

Tracks Option	
Capacity	1,325 Bushels
Total Weight (approx.)	22,800 lbs.
Compaction Rate	12.20 lbs/sq inch



DIMENSIONS

Model	A	B	C	D	E	F	G	H	I	J	K	L	M
1326	1'-6"	12'-2"	8'-6"	25'-6"	34'-5"	14'-2"	7'-6"	12'-3"	1'-5"	9'-0"	12'-0"	11'-9"	11'-4"

Bolt Torque Chart

Always tighten hardware to these values unless a different torque or tightening procedure is listed for specific application. Fasteners must always be replaced with the same grade as specified in the manual parts list. Always use the proper tool for tightening hardware. Make sure fastener threads are clean and you start thread engagement properly. Torque values in the charts below use a torque coefficient of 0.17.

SAE Fasteners

Coarse Thread Series						
	SAE J429 Grade 2		SAE J429 Grade 5		SAE J429 Grade 8	
<i>Diameter and Pitch (Inches)</i>	<i>Clamp Load (Lbs.)</i>	<i>Tightening Torque</i>	<i>Clamp Load (Lbs.)</i>	<i>Tightening Torque</i>	<i>Clamp Load (Lbs.)</i>	<i>Tightening Torque</i>
1/4"-20	1313	56 in-lbs	2029	86 in-lbs	2864	122 in-lbs
5/16"-18	2163	115	3342	178	4719	251
3/8"-16	3196	17 ft-lbs	4940	26 ft-lbs	6974	37 ft-lbs
7/16"-14	4385	27	6777	42	9568	59
1/2"-13	5853	41	9046	64	12771	90
5/8"-11	9323	83	14408	128	20340	180
3/4"-10	13797	147	21322	227	30101	320
7/8"-9	11428	142	29436	365	41556	515
1"-8	14992	212	38616	547	54517	772
Fine Thread Series						
<i>Diameter and Pitch (Inches)</i>	<i>Clamp Load (Lbs.)</i>	<i>Tightening Torque</i>	<i>Clamp Load (Lbs.)</i>	<i>Tightening Torque</i>	<i>Clamp Load (Lbs.)</i>	<i>Tightening Torque</i>
1/4"-28	1500	64 in-lbs	2319	99 in-lbs	3274	139 in-lbs
5/16"-24	1395	74	3702	197	5226	278
3/8"-24	3623	19 ft-lbs	5599	30 ft-lbs	7905	42 ft-lbs
7/16"-20	4897	30	7568	47	10684	66
1/2"-20	6598	47	10197	72	14396	102
5/8"	10558	93	16317	144	23036	204
3/4"	15385	163	23776	253	33566	357
7/8"	12609	156	32479	403	45853	568

Metric Fasteners

Coarse Thread Series				
	Class 8.8		Class 10.9	
<i>Diameter and Pitch (mm)</i>	<i>Clamp Load (Lbs.)</i>	<i>Tightening Torque</i>	<i>Clamp Load (Lbs.)</i>	<i>Tightening Torque</i>
M5-0.8	1387	4 in-lbs	1985	66 in-lbs
M6-1	1968	7	2816	113
M8-1.25	3580	192	5123	274
M10-1.5	5671	32 ft-lbs	8115	45 ft-lbs
M12-1.75	8240	55	11792	79
M16-2	15320	137	21924	196
M20-2.5	23938	267	34256	382
M22-2.5	29669	364	42457	521
M24-3	34471	461	49329	660
M30-3.5	54819	917	78448	1313
Fine Thread Series				
<i>Diameter and Pitch (mm)</i>	<i>Clamp Load (Lbs.)</i>	<i>Tightening Torque</i>	<i>Clamp Load (Lbs.)</i>	<i>Tightening Torque</i>
M8-1	3833	205 in-lbs	5486	293 in-lbs
M10-1.25	5985	33 ft-lbs	8565	48 ft-lbs
M12-1.25	9007	723	12889	86
M16-1.5	16331	146	23371	209
M20-1.5	27517	307	38065	425
M22-1.5	33688	413	46601	572
M24-2	38847	520	53738	719
M30-2	62823	1051	86905	1454

TIGHTENING WHEEL NUTS

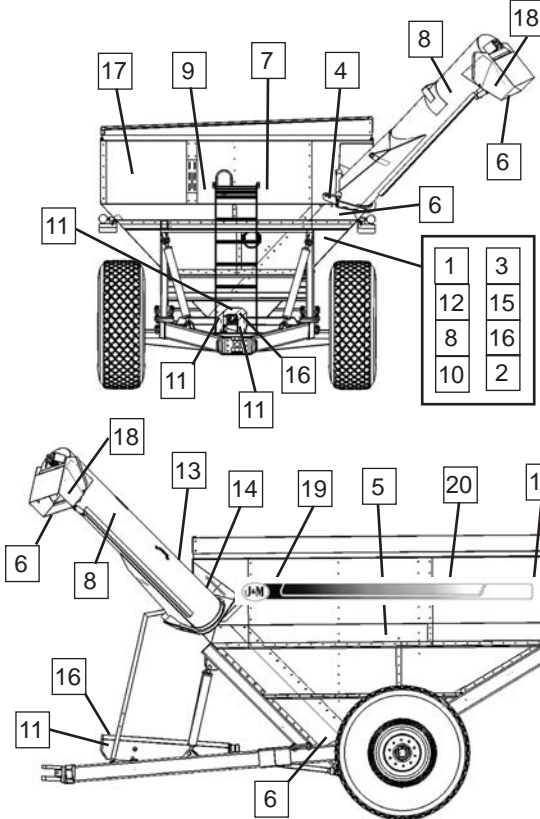
Standard 3/4" wheel studs and nuts should be tightened to torque 400 Ft.-Lbs and standard 22mm studs should be tightened to torque 640 Ft.-Lbs. During initial operation of the grain cart and then checked for proper torque after every 10 hours of use. Failure to do so may damage wheel nut seats. Once seats are damaged, it will become impossible to keep nuts tight.

Decals

⚠ ATTENTION! BECOME ALERT! YOUR SAFETY IS INVOLVED! ⚠

Replace Immediately If Damaged or Missing

IMPORTANT: Install new safety signs if the old signs are destroyed, lost, painted over or cannot be read. When parts are replaced that have safety signs, make sure you install a new sign with each new part. New signs are available from the manufacturer or your authorized dealer.



IMPORTANT

OPERATING INSTRUCTIONS

- 1) With the gate indicator in the closed position, fill the box with grain.
- 2) With the PTO disengaged, fold the discharge auger to the upright position.
- 3) After the auger is in the upright position, start the PTO at a SLOW RATE OF SPEED until the pin on the upper auger engages the drive dog on the bottom auger (failure to follow this procedure may cause extensive damage to both the drive dog and the pin).
- 4) Increase PTO to the maximum r.p.m. speed and slowly open the inner gate until the pointer is in the halfway position. When grain begins flowing from the discharge auger, adjust the gate to control the rate of flow (Do not slow the speed of the PTO).
- 5) To stop unloading, FIRST return the inner gate to the closed position. For complete clean-out, gradually close the gate. Allow the unloading auger to clean-out before disengaging the PTO. Disengage the PTO and allow the auger to come to a complete stop. Fold the upper auger to the stow position.

⚠ WARNING

HIGH PRESSURE FLUID HAZARD

- To prevent serious injury or death:
- Relieve pressure on system before repairing or adjusting or disconnecting
- Wear proper hand and eye protection when searching for leaks. Use wood or cardboard instead of hands.
- Keep all components in good repair.

⚠ WARNING

- DO NOT ADJUST, SERVICE, CLEAN OR LUBRICATE THE MACHINE UNTIL ALL POWER IS SHUT OFF.
- KEEP ALL SAFETY SHIELDS IN PLACE.
- KEEP PEOPLE AND OBJECTS CLEAR OF EQUIPMENT BEFORE APPLYING POWER OR MOVING THE MACHINE.
- PREVENT PEOPLE FROM RIDING ON THE MACHINE. FALLING CAN CAUSE SERIOUS INJURY OR DEATH.
- BEFORE HIGHWAY TRAVEL, SECURE A SLOW-MOVING VEHICLE EMBLEM TO THE REAR OF THE MACHINE. MAKE SURE ALL FLASHER, TURN INDICATOR AND BRAKE LIGHTS ARE WORKING PROPERLY BEFORE HIGHWAY TRAVEL.

⚠ WARNING

KEEP HANDS, FEET, HAIR AND CLOTHING AWAY FROM MOVING PARTS

⚠ WARNING

KEEP LUG NUTS TIGHTENED

www.jm-inc.com



⚠ DANGER

KEEP HANDS AND CLOTHING AWAY FROM MOVING PARTS

FOR FARM USE ONLY

⚠ DANGER

FLOWING GRAIN TRAPS AND SUFFOCATES VICTIMS IN SECONDS!

NEVER PLAY IN OR ON GRAIN CART

(HELP)

YOU CAN DIE IN SECONDS IN FLOWING GRAIN!

⚠ DANGER

ROTATING DRIVELINE CONTACT CAN CAUSE DEATH. KEEP AWAY!

- Keep all guards in place when operating.
- Do NOT stand on steps or climb ladder until all power is shut off.
- Keep hands, feet, hair and clothing away from moving parts.



CHECK PTO OVERLAP

CHECK MANUAL FOR PTO LENGTH. INCORRECT PTO OVERLAP MAY CAUSE EXTENSIVE DAMAGE TO DRIVE SYSTEM.

CHECK ALL WHEEL NUTS

DEALER OR MANUFACTURER IS NOT RESPONSIBLE FOR DAMAGE CAUSED BY LOOSE WHEEL NUTS.

⚠ DANGER

DO NOT ENTER GRAIN TANK WHEN AUGER IS RUNNING.

⚠ DANGER

SERIOUS INJURY OR DEATH CAN RESULT FROM CONTACT WITH ELECTRIC LINES. USE CARE WHEN MOVING OR OPERATING THIS MACHINE NEAR ELECTRIC LINES TO AVOID CONTACT.

⚠ DANGER

KEEP OFF THE LADDER WHILE THE MACHINE IS OPERATING. IN TRANSPORT OR THE UNLOADING AUGER IS IN MOTION

Decals

	Description	Part No.
1	Operating Instructions Decal	JM0018044
2	Warning, High Pressure Fluid Hazard Decal 4" x 4"	JM0010163
3	Warning, Do Not Adjust Or Service Decal	JM0014979
4	Warning, Keep Hands Away Decal	JM0018039
5	Warning, Keep Lug Nuts Tightened Decal 1-5/8" x 4"	JM0010150
6	Danger, Keep Hands and Clothing Away Decal	JM0018035
7	Danger, Keep Off Ladder Decal	JM0018034
8	Danger, Electric Lines Decal	JM0015099
9	Danger, Do Not Enter Grain Tank Decal	JM0018033
10	Danger, Flowing Grain Traps Grain Cart Decal	JM0018037
11	Danger, Rotating Driveline Decal	JM0018036
12	Farm Use Only	JM0018038
13	Open Decal	JM0025433
14	Closed Decal	JM0025434
15	Check PTO Overlap Decal	JM0025435
16	Check All Wheel Nuts Decal	JM0018043
17	J&M Oval Decal (Large) 9-1/2" x 15"	JM0015151
18	J&M Oval Decal (Medium) 5-1/2" x 8-1/2"	JM0010179
19	Opposite Auger Side Stripe Kit	Specify
20	Auger Side Stripe Kit	Specify
21	Lock and Load Indicator Lights Decal	JM0044289
22	www.jm-inc.com Decal	JM0019239
23	Grain Storm Decal	JM0025930

Safety Rules

ATTENTION! BECOME ALERT! YOUR SAFETY IS INVOLVED!

Safety is a primary concern in the design and manufacture of our products. Unfortunately, our efforts to provide safe equipment can be erased by an operator's single careless act. In addition, hazard control and accident prevention are dependent upon the awareness, concern, judgment, and proper training of personnel involved in the operation, transport, maintenance and storage of equipment.

Make certain that the operator(s), prior to operating is instructed in safe and proper use and reviews and understands the manual(s) pertaining to this machine. Also make certain that the operator(s) reviews and understands the operator's manual of the tractor prior to hooking up or operating the grain cart.

Read this manual before you operate this machine. If you do not understand any part of this manual, or need more information, contact the manufacturer or your authorized dealer.

SAFETY

Understand that your safety and the safety of other persons is measured by how you service and operate this machine. Know the positions and functions of all controls before you try to operate them. Make sure to check all controls in a safe area before starting your work.

The safety information given in this manual does not replace safety codes, federal, state or local laws. Make certain your machine has the proper equipment as designated by local laws and regulations.

A frequent cause of personal injury or death is from persons falling off equipment and being run over. Do not permit persons to ride on this machine.

Travel speeds should be such that complete control and machine stability is maintained at all times. Where possible, avoid operating near ditches, embankments and holes. Reduce speed when turning, crossing slopes and rough, slick or muddy surfaces.

Collision of high speed road traffic and slow moving machines can cause personal injury or death. On roads, use flasher lights according to local laws. Keep slow-moving-vehicle emblem visible. Pull over to let faster traffic pass.

Hydraulic oil leaking under pressure can penetrate skin and cause infection or other injury. To prevent personal injury,

- Relieve all pressure, before disconnecting fluid lines,
- Before applying pressure, make sure all connections are tight and components are in good condition,
- Never use your hand to check for suspected leaks under pressure. Use a piece of cardboard or wood for this purpose.
- If injured by leaking fluid, see your doctor immediately.

When transporting the grain cart, always keep the auger in the stow position.

Use care when moving or operating the grain cart near electric lines as serious injury or death can result from contact.

Never adjust, service, clean, or lubricate the grain cart until all power is shut off. Keep all safety shields in place. Keep hands, feet, hair and clothing away from moving parts while the grain cart is in operation.

The service ladder is for service work only. If you must climb into the grain tank, be certain that all power is shut off and then use extreme caution when climbing into the grain cart.

Make sure that everyone is clear of equipment before applying power or moving the machine.

Make sure that the grain cart is fastened securely to the tractor by using a high strength hitch pin, clip and safety chains. Make sure that the grain cart hitch properly matches the hitch type of the tractor. Use a single prong (spade) grain cart hitch with a double prong (clevis) tractor hitch. Use a double prong (clevis) grain cart hitch with a single prong (spade) tractor hitch.

Before filling the grain cart, make certain that no one is inside the grain tank. Never allow children or anyone in, near, or on the grain cart during transport or during loading and unloading of grain. Be aware that moving grain is dangerous and can cause entrapment, resulting in severe injury or death by suffocation.

Never operate the auger system with anyone inside the grain tank. Hands, feet, hair and clothing can fit through the openings in and around the grate. Contact with the auger can cause severe injury or death. Make certain that all power is shut off before service work is performed.

Before unhooking the grain cart from the tractor, be sure the jack stand is properly mounted and in place and the wheels are properly blocked to prevent the cart from moving.

Initial Operation and Maintenance

WARNING

BE CERTAIN THAT ALL POWER IS SHUT OFF BEFORE SERVICING THE GRAIN CART.

Before the grain cart is put into service:

- Have the safety instructions been read and clearly understood by the operator(s) of this machine?
- Has the gearbox been properly filled with SAE 80W-90 gearbox lubricant?
- Have all nuts, bolts, bearings and braces been properly fastened?
- Has the PTO been checked for proper overlap?

IMPORTANT: Has the slip clutch on the PTO been serviced? If the slip clutch is left unchecked, damages to the power-take-off and drive shaft may result. Before using the grain cart, loosen the bolts around the slip clutch. Make sure the friction plates turn free of each other and are not corroded together. Re-tighten the tension bolts. Run the auger system EMPTY and check for proper engagement of the slip clutch.

CHECK PTO OVERLAP LENGTH. Overlap length may vary depending on the tractor model and hitch setting. Try to obtain the greatest possible overlap without bottoming out in the extreme operating conditions. Too much overlap may cause the PTO to bottom out and damage the driveline. Not enough overlap may cause the PTO front and back halves to separate. From the fully compressed (shortest) length the PTO should be telescoped (extended) between 10" and 22". Different PTO lengths may need to be purchased to accommodate your terrain. A 4" shorter or a 10" longer PTO can be ordered through your dealer from J&M Manufacturing.

GREASE BEARINGS: Are all bearings on the drive line properly greased? Are all set screws in the bearings and U-joints tight? Has the power-take-off shaft been properly greased at all points including the cross bearings? Has the universal joint at the gearbox been greased? Have all grease points at the auger hinge area, including the hanger bushing assembly been greased?

TIRE PRESSURE: Are the tires properly inflated? The following is to be used as a **general guide** for tire inflation for cyclic use. Figures can vary depending on specific brand of tire used. **It is important that tires are inspected before and after the unit is loaded. The tire should stand up with no side wall buckling or distress as the tire rolls. Do Not Exceed The Tire Pressure Indicated Below:**

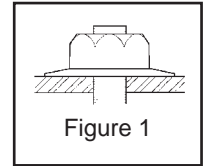
Tire Size	psi
IF520/85R42 Lug Tires (Firestone) (169 LI) (for 18x42-10 Hole Wheels)	44
520/85R42 Lug Tires (Alliance) (169 LI) (for 18x42-10 Hole Wheels)	50
IF1250/50R32 Lug Tires (Firestone) (201B LI) (for 44x32-10 Hole and 44x32-20 Hole Wheels)	46
IF1250/50R32 Lug Tires (Alliance) (201A8 LI) (for 44x32-10 Hole and 44x32-20 Hole Wheels)	46
IF1050/50R32 Lug Tires (Alliance) (195LI) (for 32x36-10 Hole Wheels)	58

Operating Instructions

VERY IMPORTANT: Under no circumstance is it recommended to tow a loaded grain cart in excess of 8 mph.

WHEEL NUTS: Are the wheel nuts properly fastened? **Torque to 640 Ft.-Lbs. for standard 22mm wheel studs and nuts. Torque to 400 Ft.-Lbs. for 3/4" wheel studs and nuts. Wheel studs and nuts should be checked after each load during initial operation of the cart and then after every 10 hours of use. Failure to do so may damage wheel studs and nuts.** Once the seats are damaged, it will become impossible to keep the lug nuts tight.

The drawing shows the proper way to mount the wheels using Budd-type nuts. The wheels supplied with your grain cart have straight holes and the Budd nuts will be mounted according to Figure 1. Wheels that are improperly installed on the grain cart, resulting in product failure, will nullify warranty and shift the burden of liability to the owner/operator. **We recommend you inspect your wheel nuts to make sure they are properly installed. Also, check the wheel nuts on a regular basis to ensure they are tight.**



LIGHTING AND SAFETY DECALS: Are the rear, amber extremity lights properly positioned? Extend the lights within 16" (40,6cm) of the left and right extremities of the grain cart. Is an SMV Emblem attached to the rear of the grain cart?

Are the lights working properly? Are all lights and reflective decals clean, visible and properly placed?

BE CERTAIN THAT ALL POWER IS SHUT OFF WHEN HOOKING UP TO TRACTOR OR CONNECTING HYDRAULIC LINES TO TRACTOR.

Preparing the Grain Cart for Use: Model 1312 grain carts require a 250+ HP Tractor.

IMPORTANT: Do NOT pull a loaded grain cart on highway. For incidental highway travel, observe the section below.

Tow Loads Safely

Stopping distance increases with speed and weight of towed loads, and on slopes. Towed loads with or without brakes that are too heavy for the tractor or are towed too fast can cause loss of control. Consider the total weight of the equipment and its load.

Observe these recommended maximum road speeds, or local speed limits which may be lower.

Road Travel (grain cart empty): Do not travel more than 32 km/hr (20 mph) and do not tow loads more than 1.5 times the pulling unit's weight.

Ensure the load does not exceed the recommended weight ratio. Use additional caution when towing loads under adverse surface conditions, when turning, and on inclines.

⚠ WARNING: For greater stability on uneven or steep terrain, position non-scale wheel spindles at the furthest out setting.

⚠ IMPORTANT:

1) Connect grain cart hitch to tractor drawbar using a good quality hitch pin. Attach the safety chain to the tractor and through one chain loop provided on either side of the grain cart frame as shown. Make sure the grain cart hitch properly matches the hitch of the tractor. Use a single prong (spade) grain cart hitch with a tractor double prong (clevis) hitch. Use a double prong (clevis) grain cart hitch with a single prong (spade) tractor hitch.



Safety Chain User Instruction

- Secure the safety chain by looping it around each side of the grain cart as shown and connecting to the towing machine's attaching bar.
- Do Not allow any more slack than necessary for articulation.
- Do Not use any intermediate support as the attaching point.
- Store the safety chain by securing it around the main axle A-frame of the grain cart.
- Replace the safety chain if one or more links or end fittings are broken, stretched or otherwise damaged or deformed.

2) Attach the power-take-off shaft to the tractor. The PTO must have at least 10" of engagement. Check tractor drawbar for clearance and length and adjust if necessary. **Make sure the PTO does not bottom out when making sharp turns as it may bend the drive shaft.**

3) Make sure the jack stand is removed from the lower support position before the cart is moved. **Never use the jack to support a loaded grain cart.**

4) Be sure that no debris or foreign objects are in the grain cart.

5) Attach the hydraulic lines to the tractor. Two hydraulic lines (green band) operate the inside gate mechanism. Connect these lines to one service outlet on the tractor. Two hydraulic lines (yellow band) operate the folding mechanism of the auger. Connect these lines to a second service outlet on the tractor. The remaining two hydraulic lines (red band) operate the hydraulic flow control spout located at the end of the upper auger. Connect these lines to a third service outlet on the tractor. Make sure the air is bled from the hydraulic cylinders and hoses.

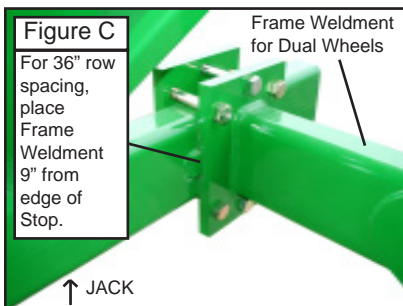
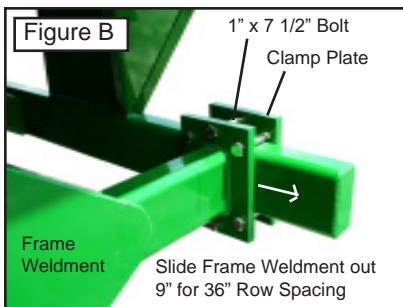
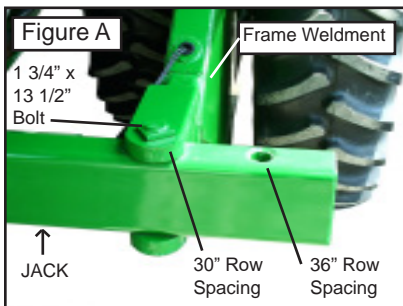
Operating Instructions

- 6) Run the auger system EMPTY before loading grain into the tank for actual use. Make certain that the slip clutch is operating and that the upper and lower augers are properly engaged.
- 7) Connect the lighting 7-prong connector end on the main wiring harness to the tractor electrical outlet. Make sure that all flasher and turn indicator lights are working properly before incidental highway travel.

CAUTION

- Do NOT operate the grain cart before reading and understanding the Operator's Manual and ALL danger, warning and caution signs.
- Be sure that a Slow-Moving-Vehicle emblem is attached to the rear of the grain cart.
- Never exceed 1,000 rpm on the PTO and driveline system.
- Never fold or extend the auger until the PTO has come to a complete stop.
- Never fill the grain cart unless the gate indicator is in the closed position.
- Never allow foreign object (shovels, etc.) to be placed inside the grain cart.
- Never engage the lugs and drive dogs on the augers when the system is moving at a high rate of speed.
- Never perform maintenance work or service the grain cart with the tractor running.

Adjusting Row Spacing for Walking Tandem Duals



- 1) Securely position jacks under the frame of the grain cart as shown in Figures A and C.
- 2) Loosen the rear of the Frame Weldment by removing the 1" x 7 1/2" Gr 8 Bolts and Clamp Plate.
- 3) Remove the 1 3/4" x 13 1/2" Bolt and Jam Nut from the front of the Frame Weldment.
- 4) Slide the Frame Weldment out to the bolt location for 36" row spacings as shown in Figure A and secure using the 1 3/4" x 13 1/2" bolt and jam nut. If the grain cart is equipped with an electronic scale system, be sure not to damage the electronic cord when moving the Frame Weldment.
- 5) Swing the Frame Weldment outward. Switch the tire location by removing both tires and remounting each tire to the hub on the opposite side of the weldment. The tire originally on the outside of the weldment will now be located on the inside of the weldment and vice versa. (The valve stems for 36" row spacing should be facing toward the Frame Weldment, or toward each other.) Be sure to keep the tire tread positioned in the same direction as before.
- 6) After the wheels have been tightened to the hubs, swing the Frame Weldment until the new clamping location is 9" from the original 30" row spacing stop.
- 7) Tighten the rear of the Frame Weldment to the grain cart frame using the six 1" x 7 1/2" Gr 8 Bolts, Hex Nuts and Clamp Plate.
- 8) Torque all bolts to specifications and Repeat on Other Side.

Lubrication Service Schedule

IMPORTANT: Your grain cart has grease fittings at all critical points. These should be serviced before the grain cart is put into operation.

WARNING

BE CERTAIN THAT ALL POWER IS SHUT OFF BEFORE SERVICING THE GRAIN CART

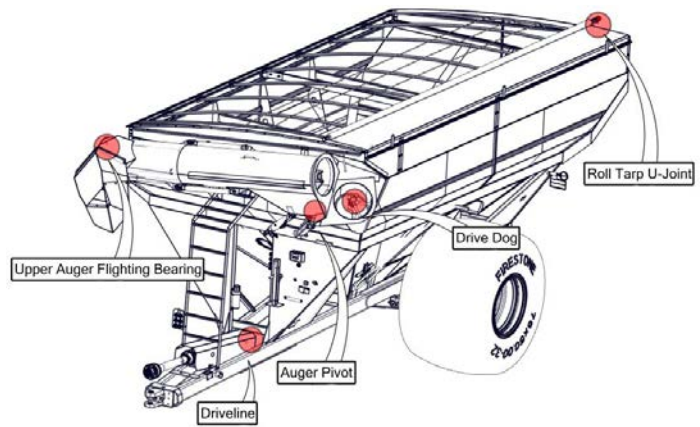
PTO & DRIVELINE: The grease fittings on the PTO should be serviced after every 8 hours of use. Service the grease fittings on each of the drive bearings and also the universal joint after every 8 hours of use.

AUGER FOLDING MECHANISM: One grease fitting is located on the pivot pin of the folding auger. This fitting should be serviced after every 8 hours of use. Service the grease fitting on the hanger bushing assembly (top end of the lower auger assembly) after every 8 hours of use or as needed.

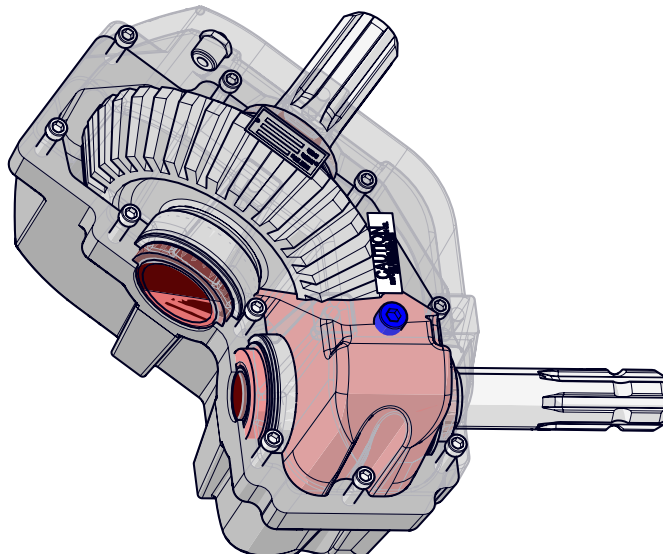
SPRING LOADED UPPER AUGER BEARING: Service the grease fitting on the upper auger bearing (located at the top end of the upper auger assembly) after every 8 hours of use. Lubricate the springs and retaining bolts on the bearing before prolonged storage of the grain cart.

Gearbox Lubricant			
Model	Ounces	Input Shaft	Output Shaft
1326	96	1-3/4"	2"

Roll Tarp U-Joint	Once Annually
Auger Pivot	Every 8 hrs of use
Upper Auger Flighting	Every 8 hrs of use
Driveline	Every 8 hrs of use
Drive Dog	Every 8 hrs of use



GEARBOX: Gearbox lubricant has been added to the gearbox during final assembly. Recheck the lubricant level before initial operation of the grain cart, then periodically according to use. The fluid level should rest at the inspection plug, pictured in blue below. When filled to the proper level, the gearbox should have 96 ounces of SAE 80W-90 lubricant. Change the oil annually before use.



Routine Maintenance

WARNING

BE CERTAIN ALL POWER IS SHUT OFF WHEN SERVICING THE GRAIN CART

- Repack the bearings in the hub assembly once a year or as needed. Use a good quality LS EP2 Severe Duty, High Shock Load, Lithium based Grease. Also check the seal for wear and replace if necessary.
- Check the grain cart periodically for cracks in welds and for other structural damage. Have cracked welds fixed immediately. Failure to do so could result in extensive damage to the grain cart and greatly reduce the life of the cart.
- Lubricate the slides on the clean-out door.
- Check all hydraulic hoses for wear and replace as necessary.
- Make sure all tires are properly inflated. See "Initial Operation and Maintenance" on page 13 in the Owner's Manual for recommended instructions for tire pressure. It is important that tires are inspected before and after unit loaded.
- Check PTO for wear of plates in the slip clutch. Replace if needed.
- Make sure that all guards and shields are in place before operating the grain cart.

Troubleshooting

WARNING

MAKE SURE THAT ALL POWER IS SHUT OFF BEFORE SERVICING THE GRAIN CART. MAINTENANCE AND REPAIR SERVICE WORK TO BE PERFORMED BY QUALIFIED SERVICEMEN ONLY.

Trouble	Possible Cause	Possible Remedy
Auger will not return to down position or move from stow position	Faulty check valve	Replace check valve
	Faulty lock and load solenoid	Disconnect power to lock and load. If the auger is able to move, the lock and load solenoid needs to be replaced
	Upper flighting and lower flighting are locked together	Bearing on top of upper auger flighting needs adjusting. When the auger is in the engaged position, there must be 1/8" (0,32cm) gap between bottom of top bearing and top of upper tube housing (See "Adjusting the Lower and Upper Flighting" on page 18)
	Feed gate open	Close the feed gate
	Lock and Load not operating correctly	Make sure the limit switch on the feed gate indicator assembly is functioning properly
Hanger bushing assembly at the top of the lower auger flighting is hot	Top of the hanger bushing assembly is rubbing against the drive dog	Loosen the two bolts and re-adjust the position of the hanger bushing assembly. Re-tighten bolts
		Remove the lower flighting assembly and place a shim between the spline coupler and the gearbox
Excessive vibration	Auger flighting or shaft is bent	Straighten or replace auger flighting
	Drive shaft is bent	Replace or straighten drive shaft
Grain flow stoppage	Bolt sheared in drive dog	Replace bolt in drive dog. Engage upper and lower flighting at a slow rate of speed. (Drive dogs and lugs are being engaged too fast.)
	Folding auger before complete stop	Upper and lower flightings are disengaging before auger comes to a complete stop. Replace bolt in the drive dog. Never engage or disengage the upper and lower flightings until the augers come to a complete stop.
	PTO key sheared	Replace key and tighten set screw
Auger tube is breaking away from the grain cart at the hinge area or the ram in the hydraulic folding cylinder is bent	Upper auger is extended in the upright position while traveling in the field	Repair or place folding cylinder if necessary. Remember to lower auger to the field position after unloading.

Adjusting the Lower and Upper Flighting

⚠ WARNING

MAKE SURE THAT ALL POWER IS SHUT OFF BEFORE ADJUSTING THE FLIGHTING ASSEMBLY.

LOWER FLIGHTING - If the drive-dog and hanger assembly are becoming excessively hot during unloading, the lower flighting and/or hanger may need adjusting. The hanger bushing assembly has elongated holes where it attaches to the outer tube assembly. Loosen the two 1/2" bolts on the hanger bushing assembly. Adjust the hanger either up or down and vertically center it between the flighting and drive dog. Re-tighten the bolts. Make certain that the flighting center and drive-dogs do not rub the hanger bushing assembly, causing them to become hot.

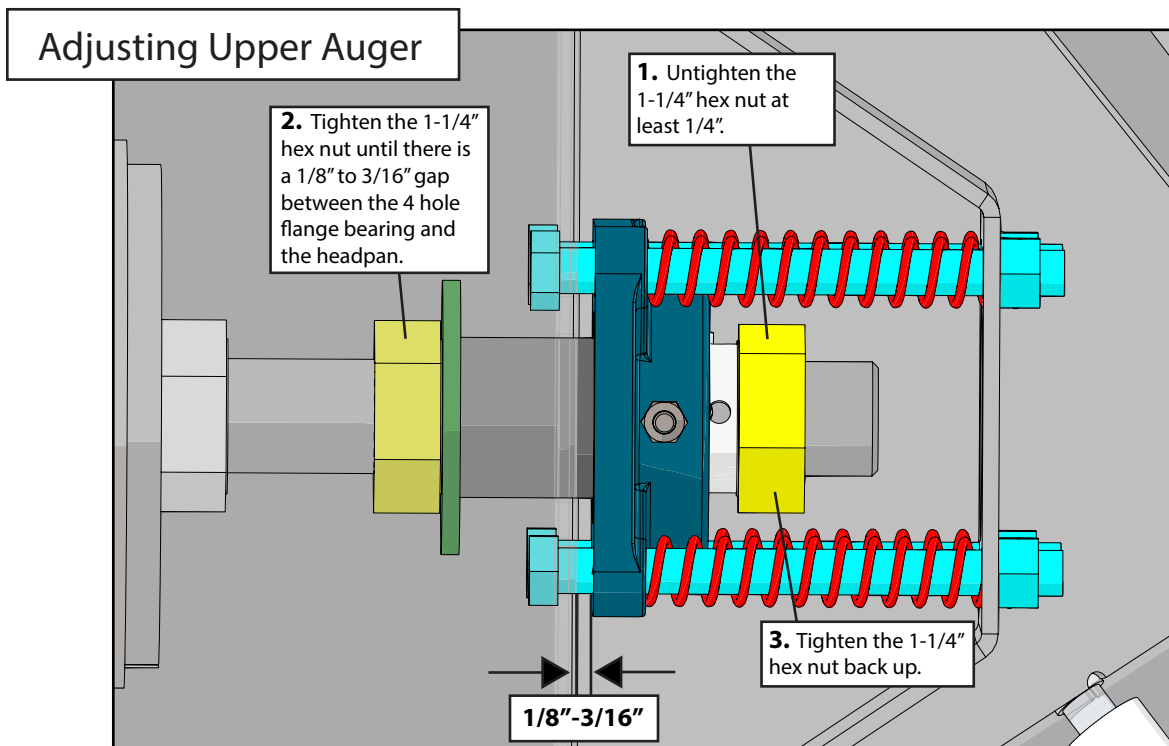
If the hanger can no longer be adjusted by moving it up or down on the elongated holes, both the hanger bushing assembly and the lower flighting will have to be removed. After removing them from the tube assembly, place a shim [between 1/8" (0,32cm) to 3/16" (0,48cm) thick] where the gearbox and the spline coupler (welded to the lower flighting). Replace the lower flighting and reattach the hanger to the tube assembly. Readjust the hanger assembly. NOTE: The bottom of the lower flighting is not attached to the gearbox with any bolts or set screws but may be 'frozen' fast. Be careful when removing the lower flighting from the gearbox. For easier removal of the lower flighting, keep the gearbox at the bottom intact, remove the two 1/2" bolts from the hanger bushing assembly and pull the lower flighting off of the gearbox.

After adjusting the lower flighting, move the upper auger to the unload position and check the upper flighting for readjustment.

UPPER FLIGHTING - If the upper and lower augers do not properly separate during the unfolding sequence, the upper flighting may need adjusting. Before making adjustment to the upper flighting, check to see if the lugs and drive dogs on the auger assemblies are locking together. If they are not locked together, check to see if a faulty check valve on the hydraulic cylinder used to raise and lower the upper auger assembly may be causing the problem.

Fold the upper tube assembly into the upright position. Position the upper flighting in the engaged position with the lower flighting. Locate the four-hole flange bearing on the top of the upper auger tube housing. With the upper flighting in the engaged position, check the spacing between the upper bearing and the upper tube housing. There must be an 1/8" (0,32cm) space between the base of the four-hole flange bearing and the upper tube housing. If there is NOT a space between the bearing and the upper tube housing, or if there is more than 1/8" (0,32cm) space, the upper flighting will need to be adjusted. To adjust the upper flighting, loosen the 1 1/4" hex nuts both above and below the four-hole flange bearing. Move the 1-1/4" hex nuts up or down the threaded shaft on the top of the auger flighting shaft until the bearing moves to approximately 1/8" (0,32cm) above the base of the upper tube housing. When the four-hole flange bearing is properly located, tighten both 1-1/4" hex nuts together to secure the bearing position.

If the upper and lower flighting still does not separate properly during the folding sequence, a small bevel may need to be removed from the inside of the lugs where they engage the drive dogs on the auger assemblies. Grind approximately 1/8" (0,32cm) from the corner of the lugs where they touch against the drive dogs.



Removing Dirt from the Restrictors on the Hydraulic Cylinder

WARNING

MAKE SURE THAT ALL POWER IS SHUT OFF AND THE UPPER AUGER TUBE IS IN THE DOWN POSITION BEFORE REMOVING THE RESTRICTORS

Remove restrictors from the 90 degree street elbow on the tip spout hydraulic cylinder. Remove dirt from the fitting to allow hydraulic oil to flow through the restrictor. Reattach the restrictor to the street elbow. Use Teflon sealant tape or equivalent on the threads of the restrictor before re-attaching.

If the restrictor continues to plug with dirt, replace the restrictor or filter the hydraulic oil in your system.

Storage Preparation

IMPORTANT: When the grain cart is not going to be used for a period of time, store the cart in a dry, protected place. Leaving your grain cart outside, open to the weather will shorten its life.

Procedure for Storage Preparation

1. Cover electronic monitor (if equipped) with plastic before washing the grain cart. Wash or clean and completely lubricate the grain cart. See "Lubrication Service Schedule" on page 16.
2. Remove all grain from inside the grain tank, auger tube assemblies, and at the clean-out door.
3. Check the gearbox oil and replace with new SAE 80W-90 gearbox lubricant or equivalent if necessary.
4. Touch up areas where paint may have worn away. Use a good quality primer paint, especially before re-applying graphite paint to the interior slopes of the grain tank.
5. Retract all hydraulic cylinders to prevent the piston rods from rusting.
6. Clean the tires before storage. Inflate the tires at regular intervals.
7. Open the clean-out doors at the base of the grain tank.

Removing from Storage

1. Check the gearboxes to make sure they have the appropriate amount of oil.
2. Inflate the tires to the correct operating pressure.
3. Close the clean out doors at the base of the grain tank.
4. Make sure all safety shields are in the proper position.

Repair Parts List and Diagrams

When performing maintenance work, wear sturdy, rough-soled work shoes and protective equipment for eyes, hair, hands, hearing and head. Follow the Operator's Manual instructions to ensure safe and proper maintenance and repair.

Your local, authorized dealer can supply genuine replacement parts. Substitute parts may not meet original equipment specifications and may be dangerous.

WARNING

MAKE SURE ALL POWER IS SHUT OFF BEFORE PERFORMING ANY MAINTENANCE OR REPAIR WORK.

Wheel Rims and Tires

Wheel Rims for Single Wheel Carts

32x36-10 Hole Wheel Rims (Heavy) (1 Piece)
44x32-10 Hole Wheel Rims
44x32-20 Hole Wheel Rims

Wheel Rims for Walking Tandem Dual Carts

18x42-10 Hole Wheel Rims

Tires for Single Wheel Carts

IF1050/50R32 Lug Tires (Alliance) (195LI) (for 32x36-10 Hole Wheels)
IF1250/50R32 Lug Tires (Firestone) (201B LI) (for 44x32-10 Hole and 44x32-20 Hole Wheels)
IF1250/50R32 Lug Tires (Alliance) (201A8 LI) (for 44x32-10 Hole and 44x32-20 Hole Wheels)

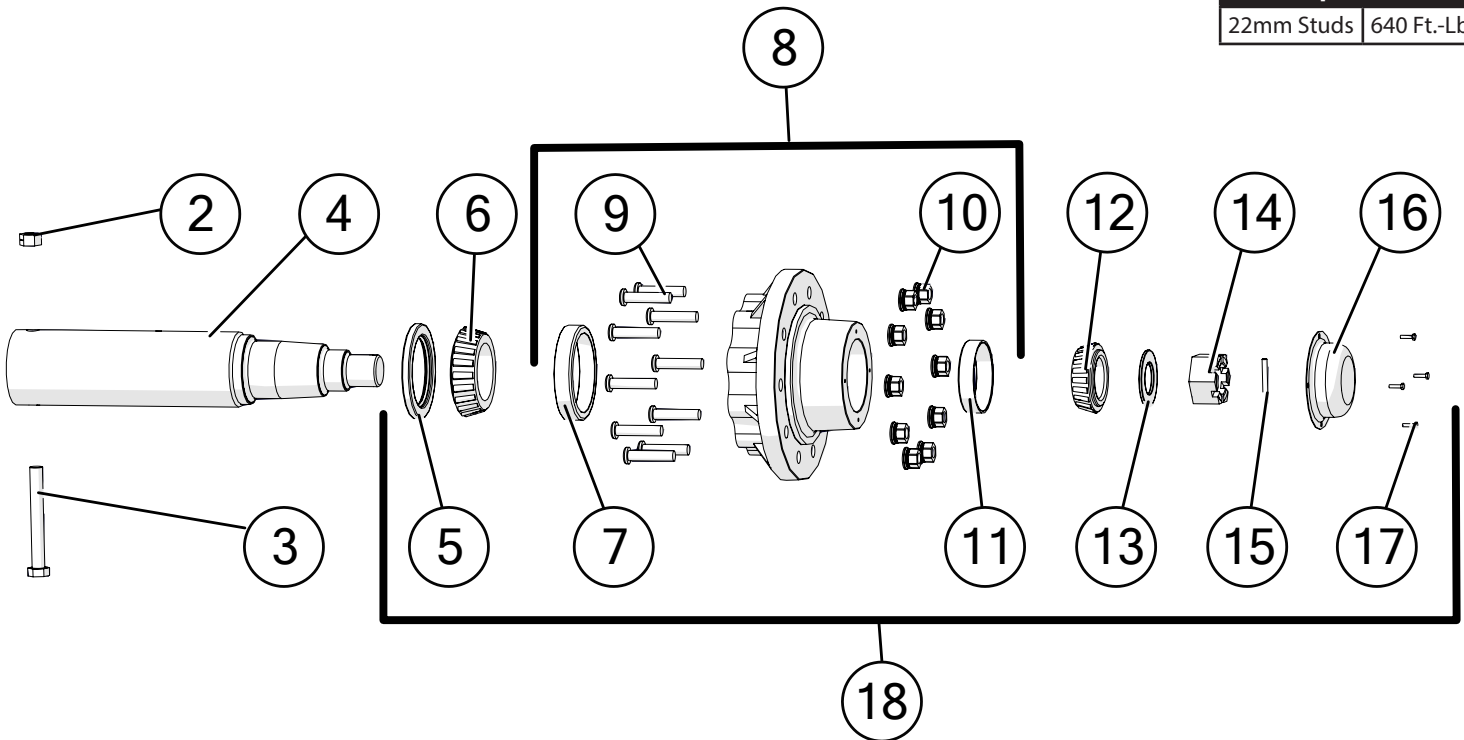
Tires for Walking Tandem Dual

IF520/85R42 Lug Tires (Firestone) (169 LI) (for 18x42-10 Hole Wheels)
520/85R42 Lug Tires (Alliance) (169 LI) (for 18x42-10 Hole Wheels)

Hub & Spindle Assembly 250-10 (Single Wheels)

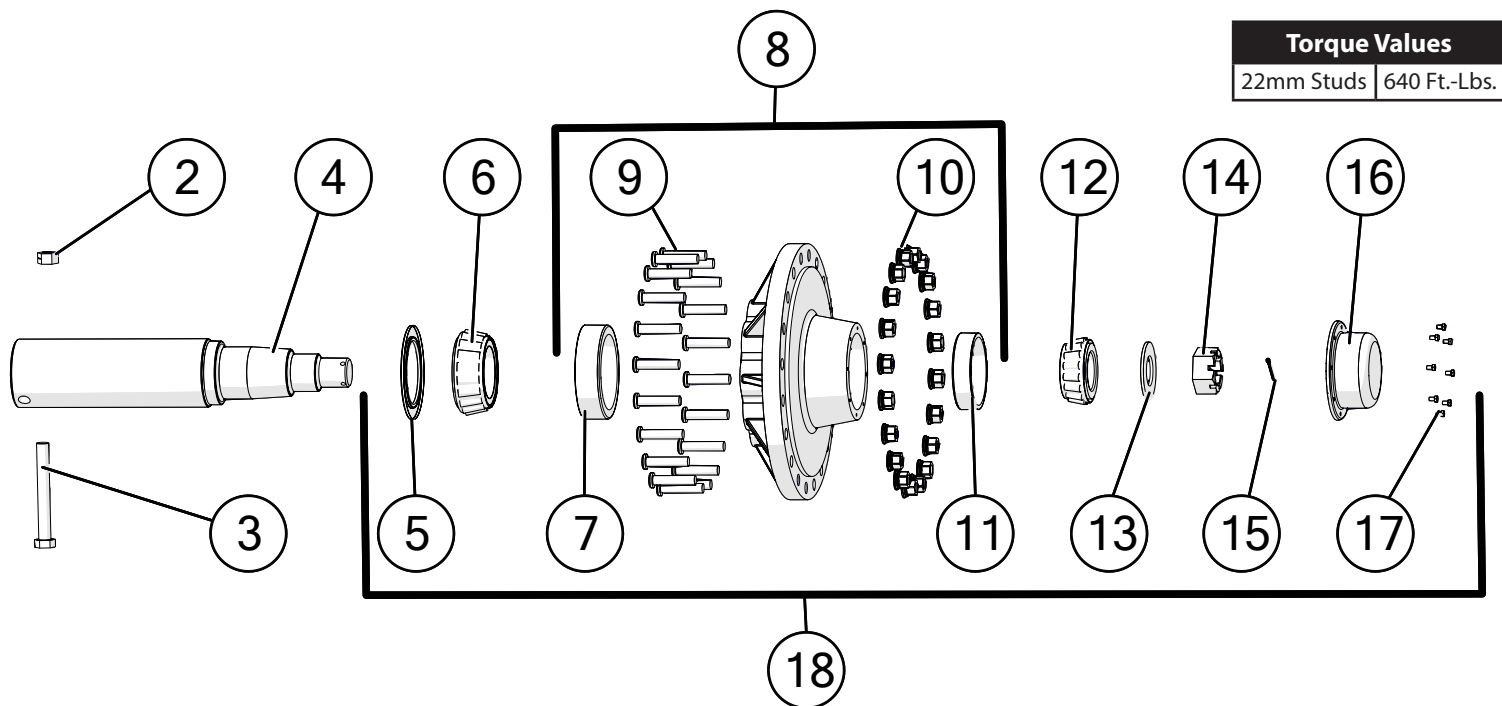
Torque Values

22mm Studs | 640 Ft.-Lbs.



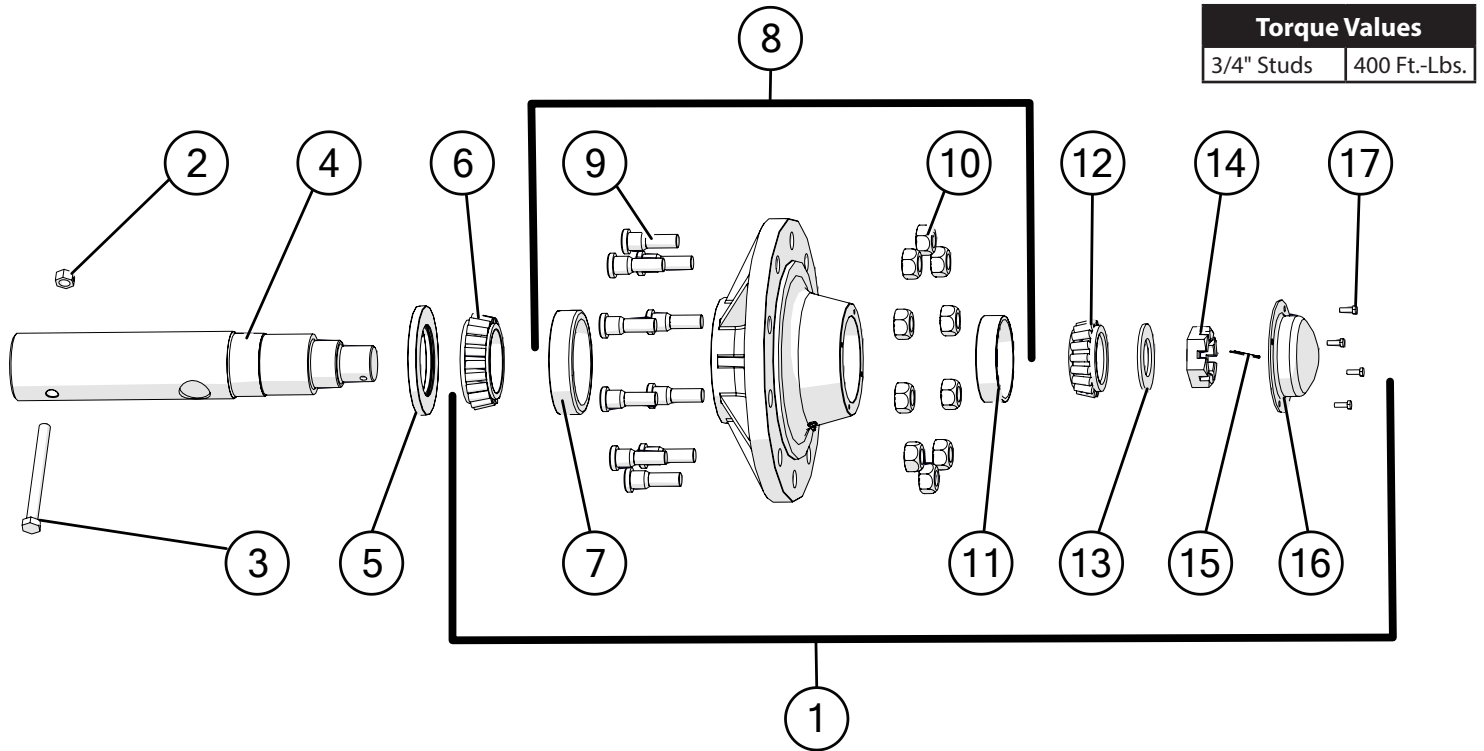
Description	Part No.
1 G250-10 Hub, Spindle, and Bearings Assembly with 22mm Studs, Races and Nuts (HSA-1075-22)	JM0019927
2 1"-8 Gr5 Z Centerlock Hex Nut	JM0002149
3 1"-8 x 8" Gr5 Z Hex Bolt (165450)	JM0001487
4 Spindle, 6" x 29-3/4" (628)	JM0019102
5 Seal 55179 (Type C) for G250-10,G300-10B, Spring-assisted (CR55179)	JM0019179
6 Large Bearing (71455)	JM0019112
7 Large Race (71750)	JM0019198
8 Hub with races, 22mm studs & nuts (13.19 bolt circle) (11.13 pilot) (H25000)	JM0019300
9 Wheel Stud (22mm x 90mm) (22-MMS)	JM0019178
10 Wheel Nut 22mm with Washer (22-MMNW)	JM0019192
11 Small Race (653)	JM0019195
12 Small Bearing (663)	JM0019177
13 3/16" Spindle Washer (2-1/2" ID, 4-1/2" OD) (H25000) (EM-25M)	JM0019106
14 2-7/16"-12 Gr5 Z Slotted Spindle Nut (SF-2512)	JM0019108
15 3/8" x 3-1/2" Z Roll Pin (3754)	JM0020001
16 Dust Cap with Gasket (Bolt-on) 7-3/4" OD (D-25000)	JM0019109
17 1/4"-20 x 1" Gr5 Z Hex Bolt	JM0002095
18 G250-10 Hub, Seal, Bearings, Races, Studs, Nuts and Dust Cap	JM0048131

Hub & Spindle Assembly 550-20 (Single Wheels-20 Bolt Hubs)



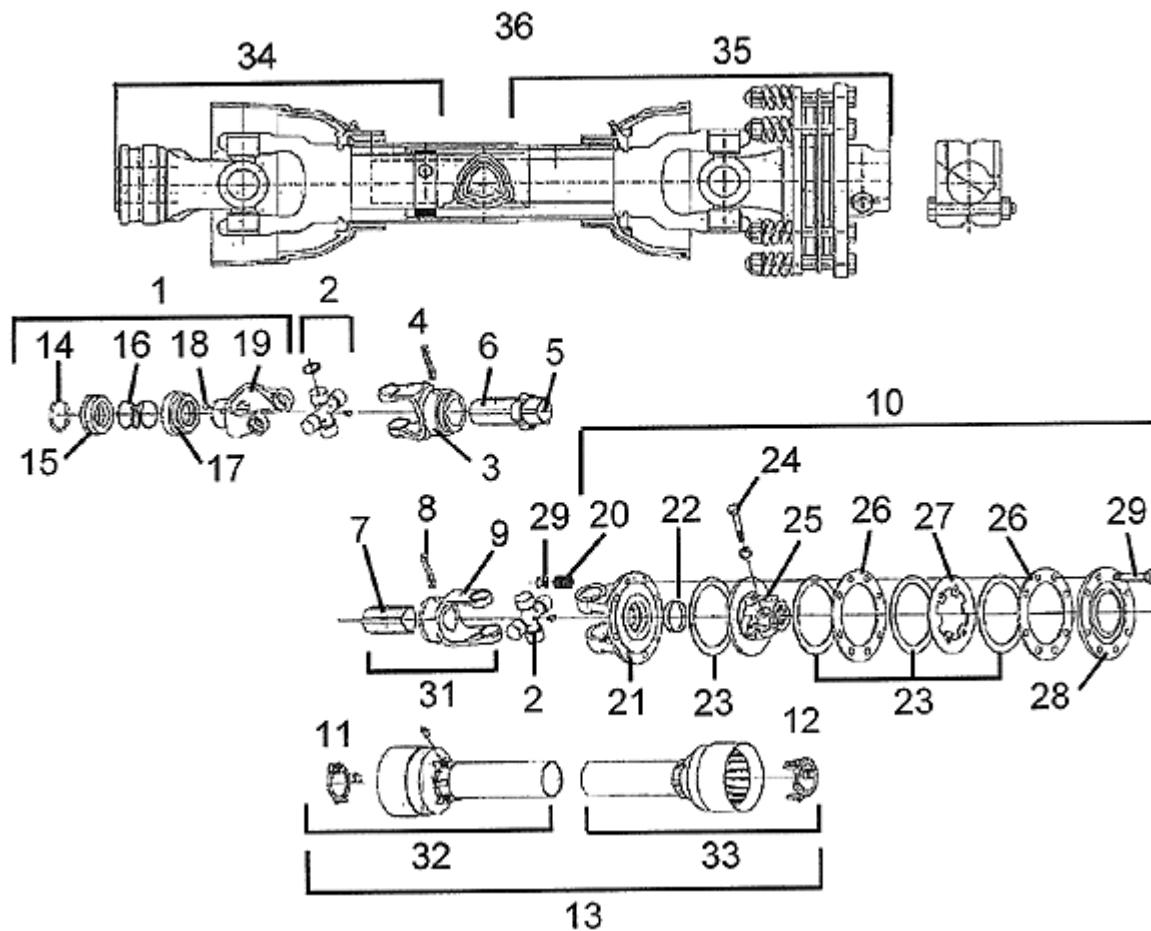
Description		Part No.
1	G550-20 Hub, Spindle, and Bearings Assembly with 22mm Studs, Races, and Nuts	JM0034272
2	1"-8 Gr5 Z Centerlock Hex Nut	JM0002149
3	1"-8 x 8" Gr5 Z Hex Bolt	JM0001487
4	Spindle, 6" x 29-3/4" for 20 Bolt Hub	JM0019723
5	Grease Seal, G550-20	JM0019219
6	Large Bearing (938)	JM0019214
7	Large Race (930)	JM0019211
8	G550-20 Hub with Studs, Lugs, and Races	JM0019209
9	Wheel Stud (22mm x 90mm) (22-MMS)	JM0019178
10	Wheel Nut 22mm with Washer (22-MMNW)	JM0019192
11	Small Race (832)	JM0019212
12	Small Bearing (842)	JM0019215
13	2-1/2" USS Flat Washer	JM0030690
14	2-1/2"-12 Gr5 Z Castle Hex Nut	JM0034274
15	3/16" X 2-1/2" Cotter Pin	JM0027684
16	G550-20 Dust Cap	JM0019217
17	5/16"-18 x 1 1/2" Gr5 Z Hex Bolt	JM0016674
18	G550-20 Hub, Seal, Bearings, Races, Studs, Nuts and Dust Cap	JM0048276

Hub & Spindle Assembly W-881 (Walking Tandem Dual Wheels)



Description		Part No.
1	W-881 Hub Assembly Complete with 3/4" Studs and Nuts (less seal and spindle)	JM0050402
2	1"-8 Gr5 Z Centerlock Hex Nut	JM0002149
3	1"-8 x 7" Gr5 Z Hex Bolt	JM0016689
4	Spindle, 4-1/2" x 20-1/4" for Walking Tandem Dual Wheel or Fully Adjustable Axle (281900S)	JM0019937
5	Seal (4-1/4" ID, 6" OD) for Hub (CR-43771)	JM0018955
6	Large Bearing (HM218248)	JM0018849
7	Large Race (HM218210)	JM0018848
8	W-881 Hub with large and small races, 3/4" Studs & Nuts (11.13 pilot)	JM0020510
9	Wheel Stud (3/4"-16 x 1-3/4") 913564	JM0018957
10	Wheel Nut 3/4"-16	JM0018958
11	Small Race (HM212011)	JM0018854
12	Small Bearing (HM212049)	JM0018852
13	2-1/8" ID, 3-3/4" OD Flat Washer (3/16")	JM0015900
14	2"-12 Gr5 Z Castle Hex Nut (912973)	JM0015899
15	3/8" x 2-3/4" Z Roll Pin (905945)	JM0018956
16	Dust Cap 6-1/4" OD (for W-881 & W-891 Hub)(909921)	JM0018954
17	1/4"-20 x 1" Gr5 Z Hex Bolt	JM0002095

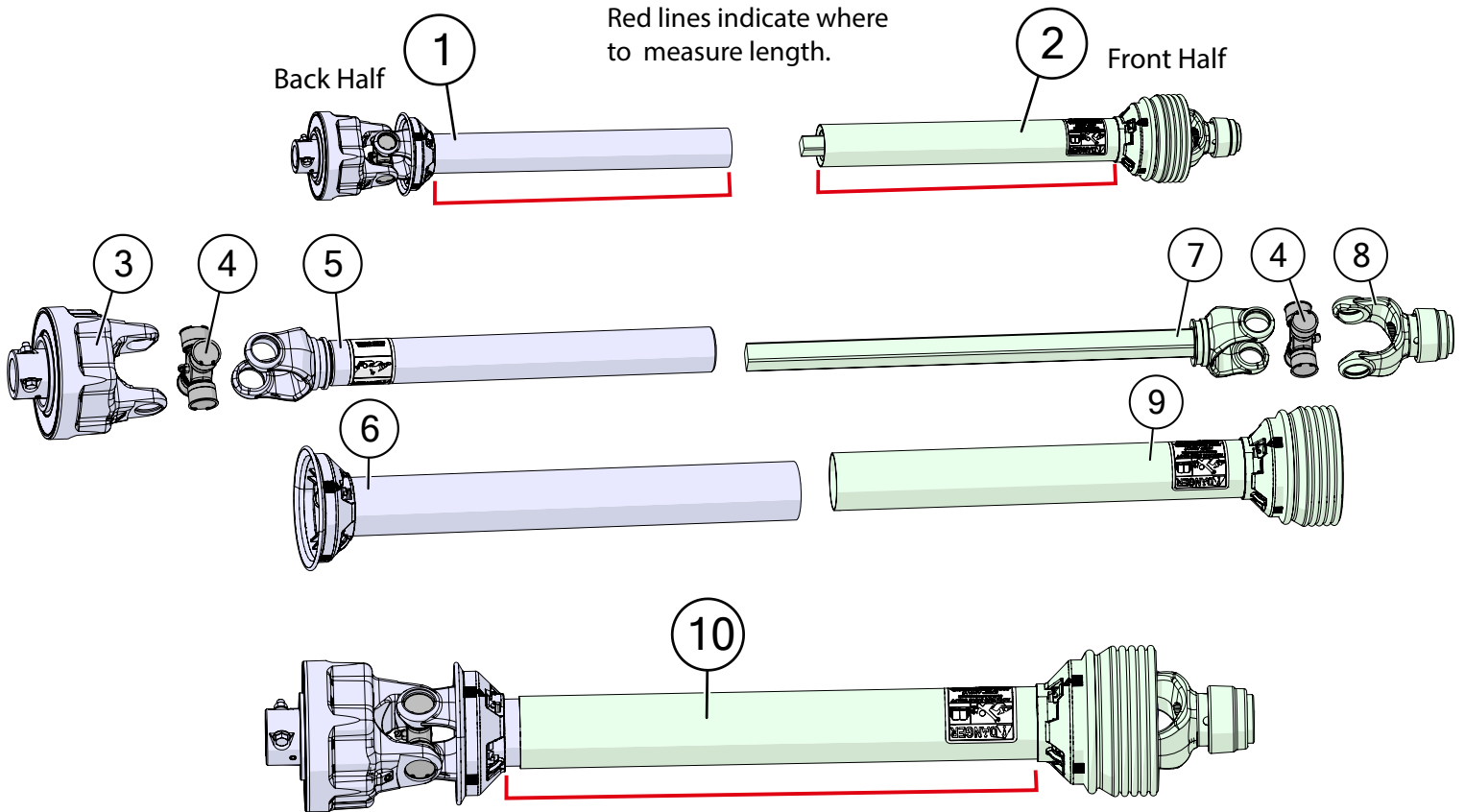
Power Take-Off (PTO) Shaft Assembly - Comer



Description	Part No.
1 Complete Collar Yoke, 1-3/4" (28428)	JM0025180
1 Complete Collar Yoke, 1-3/8" (28426)	JM0025181
2 Cross Journal Set (18130)	JM0025144
3 Outer Yoke (18133)	JM0025145
4 Roll Pin for Outer Tube (00243)	JM0025146
5 Bushing with Grease Nipple (18210)	JM0025147
6 Complete Outer Tube (30710)	JM0025148
7 Inner Tube (90010)	JM0025149
8 Roll Pin for Inner Tube (00271)	JM0025150
9 Inner Yoke (18134)	JM0025151
10 Complete Slip Clutch (84033)	JM0025152
11 Retain Collar for Outer Tube (19121)	JM0025153
12 Retain Collar for Inner Tube (19122)	JM0025154
13 Complete Guard (27820)	JM0025155
14 Outer Circlip (00452)	JM0025156
15 Sliding Sleeve Collar (16490)	JM0025157
16 Spring (15107)	JM0025158
17 Fixed Sleeve (16489)	JM0025159
18 Ball 5/8" (00085)	JM0025160
19 Yoke C15 (18428)	JM0025161

Description	Part No.
20 Spring (14022)	JM0025162
21 Flanged Yoke (18016)	JM0025163
22 Bushing (19019)	JM0025164
23 Lining Ring (6" OD x 3-1/2" ID)	JM0025165
24 Bolt M12 x 1.25 x 65 with Nut (00502)	JM0025166
25 Clutch Support F40 (18453)	JM0025167
26 Inner Plate (19014)	JM0025168
27 Intermediate Plate (19115)	JM0025169
28 Pressure Plate (19916)	JM0025170
29 Bolt & Nut M10 x 100 (00548)	JM0025171
30 Female Tube and Yoke (80039)	JM0025172
31 Male Tube and Yoke w/Roll Pin (80529)	JM0025173
32 Half Female Guarding (67820)	JM0025174
33 Half Male Guarding (37820)	JM0025175
34 Front Half PTO, 1-3/4" (21110)	JM0025176
34 Front Half PTO, 1-3/8" (21110-138)	JM0025177
35 Back Half of PTO with Clutch (36510)	JM0025178
36 PTO Complete, 1-3/4" (CPTO-134)	JM0020024
36 PTO Complete, 1-3/8" (CPTO-138)	JM0020021
37 Tee Key for Plastic Retain Collar (PTK-2)	JM0025179

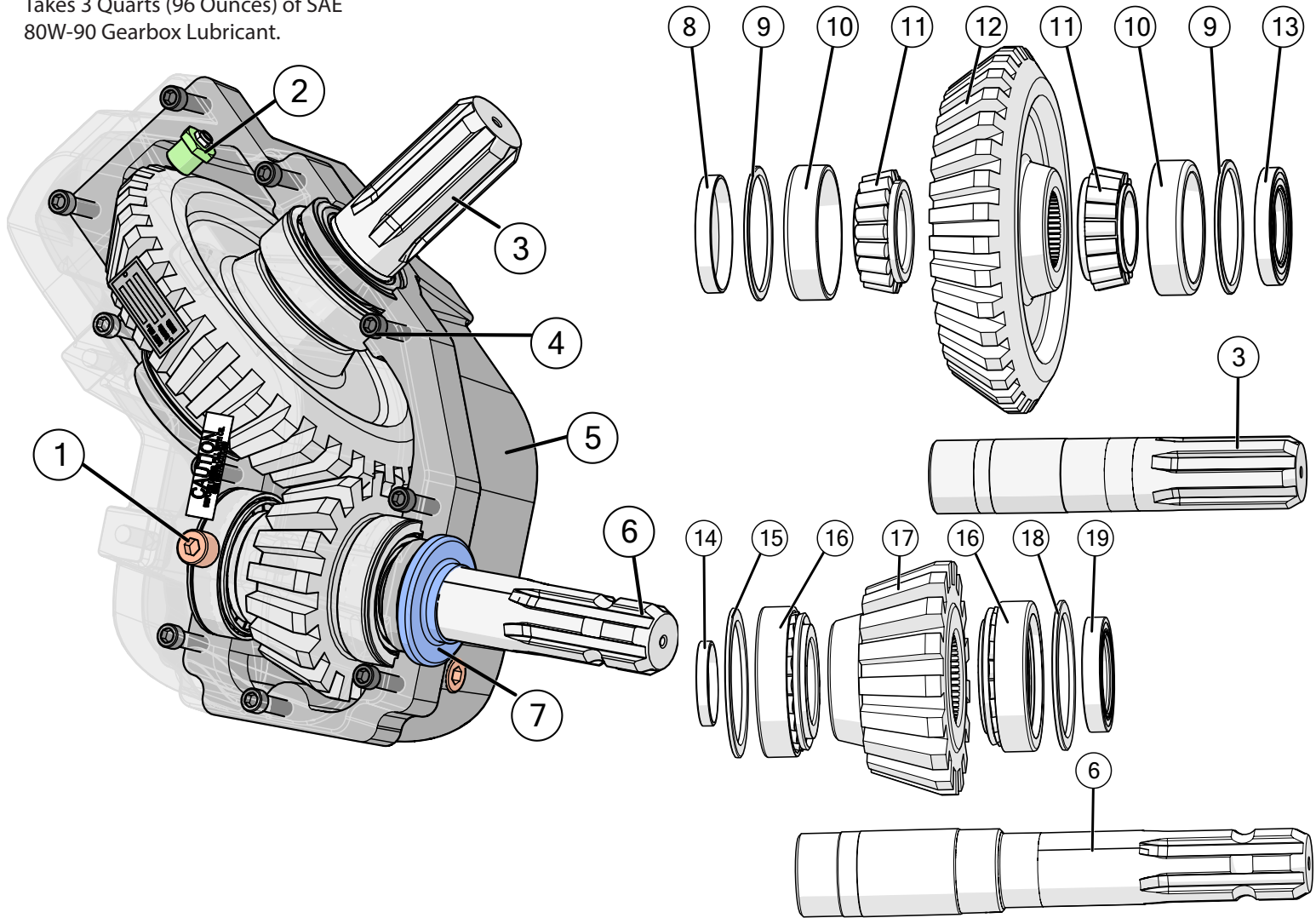
Power Take-Off (PTO) Shaft Assembly - Weasler



	Description	Part No.
1	Back Half Weasler PTO (1-3/4") (Auto Clutch) 25-3/4"	JM0018513
1	Back Half Weasler PTO (1-3/4") (Auto Clutch) (XL) 31-3/4"	JM0030331
2	Front Half Weasler PTO (1-3/4") (Auto Clutch) 25"	JM0018514
2	Front Half Weasler PTO (1-3/4") (Auto Clutch) (XL) 30-1/4"	JM0030330
2	Front Half Weasler PTO (1-3/8") (Auto Clutch) 25"	JM0024367
2	Front Half Weasler PTO (1-3/8") (Auto Clutch) (XL) 30-1/4"	JM0030640
3	Auto Clutch (1-3/4" PTO) (Weasler)	JM0018500
4	55E Cross Kit (Auto Clutch PTO) (1-3/4")	JM0018449
5	Yoke, Tube & Sleeve (1-3/4" PTO) (Weasler)	JM0018519
5	Yoke, Tube & Sleeve (XL) Weasler	JM0031647
6	Weasler Auto Clutch Back Guard (25-3/4")	JM0018517
6	Weasler XL Auto Clutch Back Guard (31-3/4")	JM0030645
7	Yoke & Shaft Assembly (1-3/4" PTO) (Weasler)	JM0018520
7	Yoke & Shaft Assembly (XL) Weasler	JM0031648
8	Spring Lock Yoke (1-3/4" PTO) (Weasler)	JM0018506
8	Spring Lock Yoke (1-3/8" PTO) (Weasler)	JM0024353
9	Weasler Auto Clutch Front Guard (25")	JM0018518
9	Weasler XL Auto Clutch Front Guard (30-1/4")	JM0030642
10	Complete 1-3/4" Weasler PTO (Auto Clutch) 25-3/4"	JM0018443
10	Complete 1-3/4" Weasler PTO (Auto Clutch) (XL) 31-3/4"	JM0030332
10	Complete 1-3/8" Weasler PTO (Auto Clutch) 25-3/4"	JM0024333
10	Complete 1-3/8" Weasler PTO (Auto Clutch) (XL) 31-3/4"	JM0030641

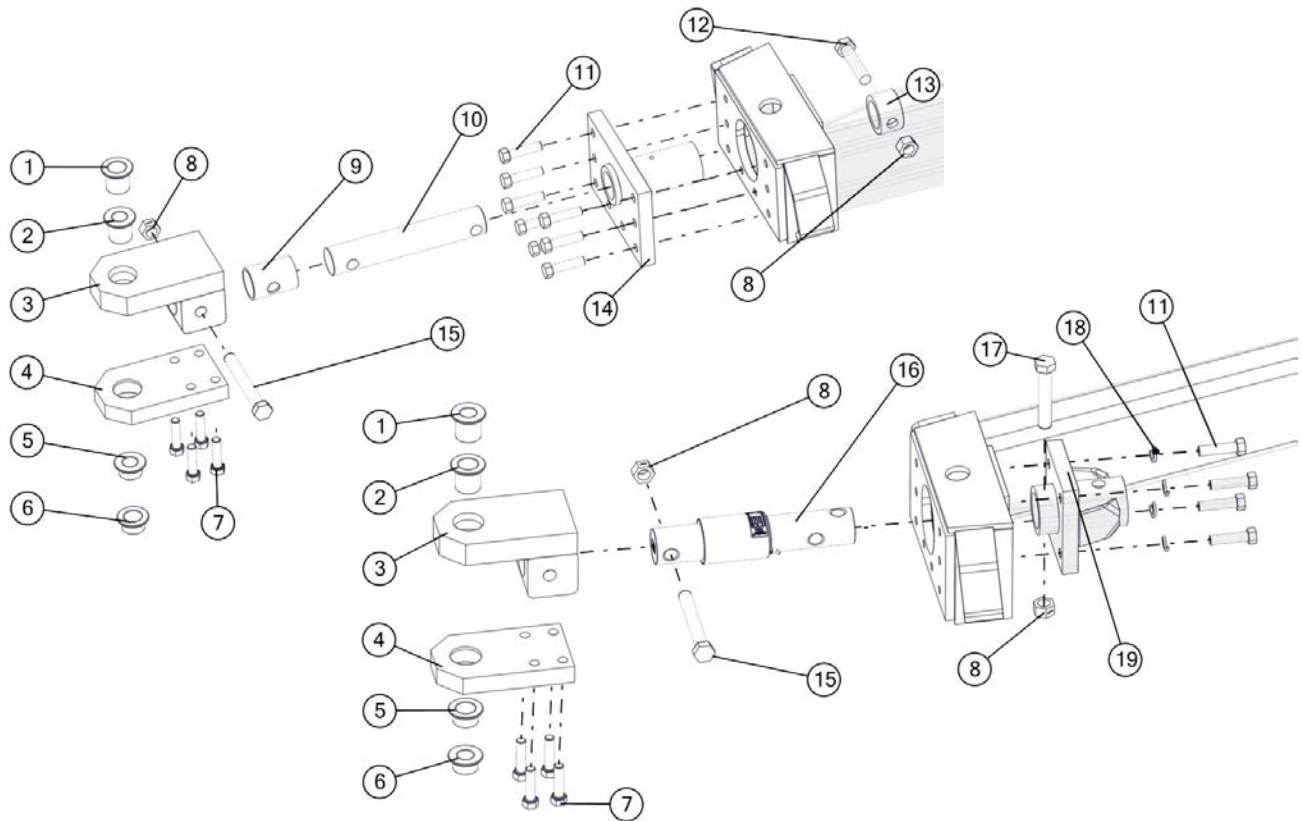
130 Degree Gearbox Assembly (Weasler)

Takes 3 Quarts (96 Ounces) of SAE
80W-90 Gearbox Lubricant.



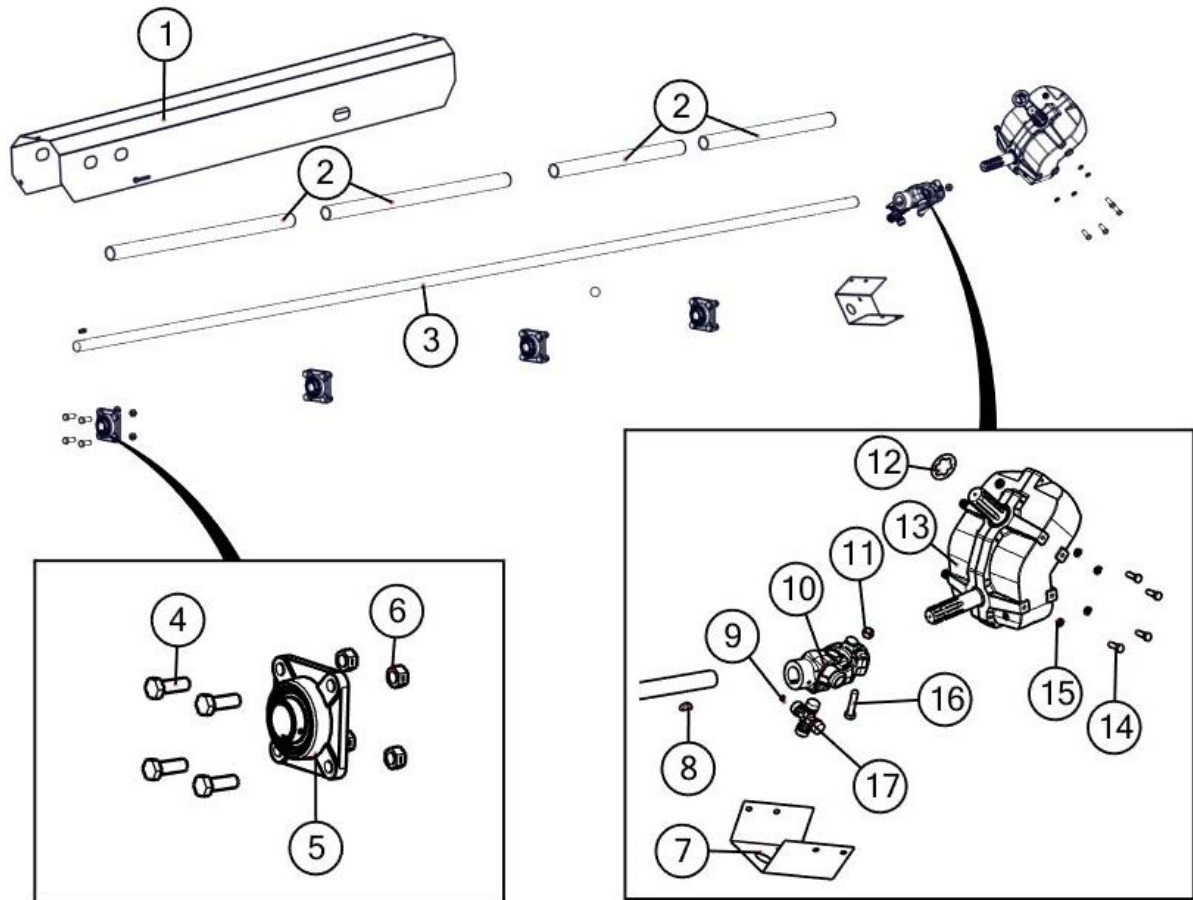
Description	Part No.
1 1/2"-14 NPT Pipe Plug for Weasler Gearbox (72-20007)	JM0025068
2 1/2" NPT Bushing 1/8" NPT Relief Plug (72-20011)	JM0025067
3 2" Output Shaft & Gear Assembly for Weasler Gearbox (74-60125)	JM0025058
4 3/8"-16 UNC x 2-1/2" Gr5 Cap Screw for Weasler Gearbox (72-0002)	JM0025069
5 Housing Set For Weasler Gearbox (70-001114)	JM0025053
6 1-3/4" Input Shaft & Gear Assembly for Weasler Gearbox (74-60123)	JM0025057
7 Gearbox Exterior Dust Seal 1-3/4" ID	JM0049020
8 End Cap Seal (3-3/16" x 5/16") for Weasler Gearbox (71-40079)	JM0025063
9 Spacer for Weasler Gearbox (71-50072)	JM0025066
10 Bearing Cup (3720) for Weasler Gearbox (71-20033)	JM0025056
11 Bearing Cone (3780) for Weasler Gearbox (71-20044)	JM0025055
12 Gear - 34 Teeth (71-06135)	JM0046061
13 Seal (2 x 3.196 x 0.4333) for Weasler Gearbox (71-40080)	JM0025062
14 End Cap Seal (2" x 9/64") for Weasler gearbox (71-40016)	JM0025060
15 Spacer for Weasler Gearbox (71-50160)	JM0025064
16 Bearing and Race Set (32210) for Weasler Gearbox (71-20017)	JM0025054
17 Gear - 17 Teeth (71-06134)	JM0046059
18 Spacer for Weasler Gearbox (71-50161)	JM0025065
19 Seal (1-3/4" x 2-23/32" x 33/64") for Weasler gearbox (71-40052)	JM0025061
20 130° Gearbox (1-3/4" Input, 2" Output) (Weasler) (130-22W)	JM0018677

Hitch and Jack Assembly



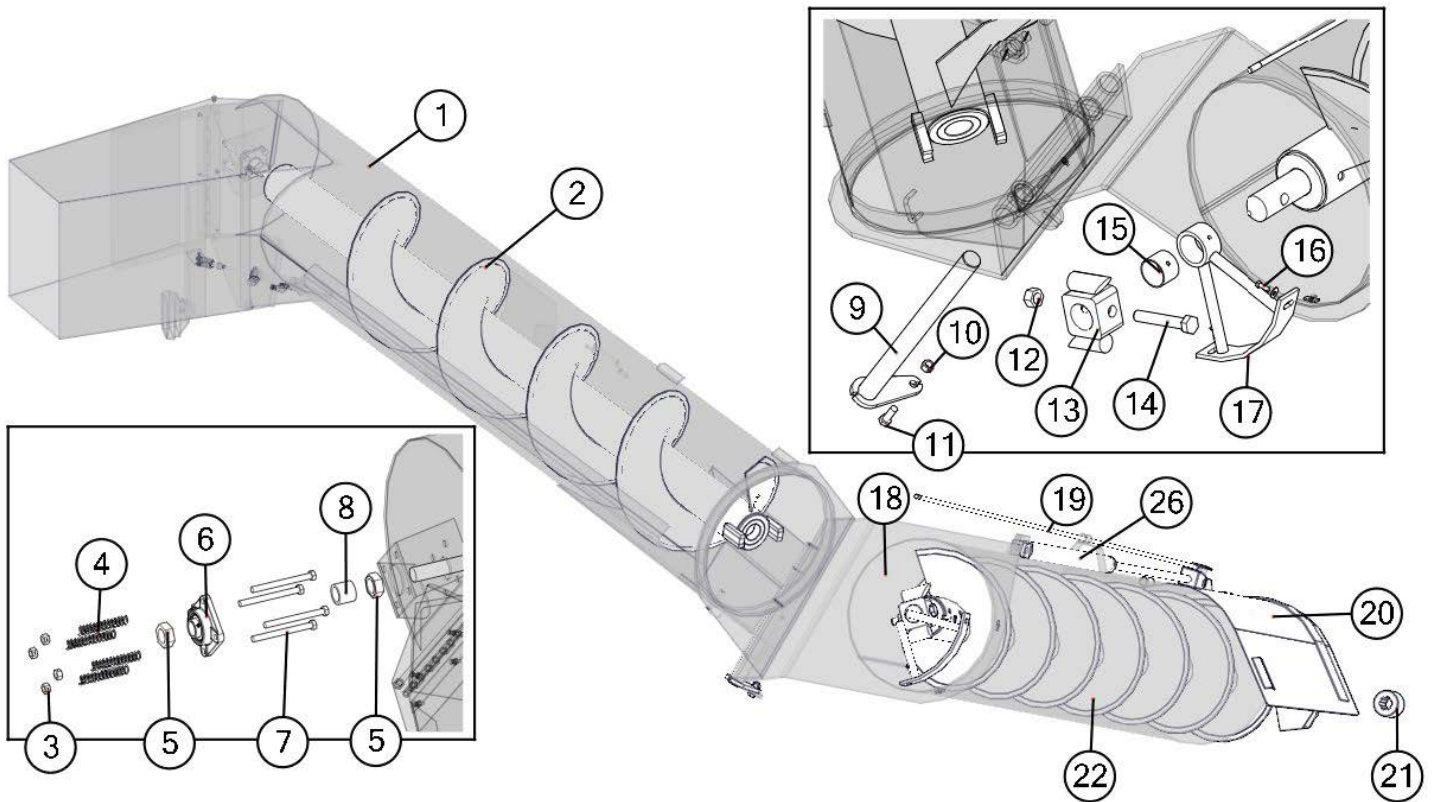
	Description	Part No.
1	1-1/2" Pin adapter for Grain Cart Clevis Hitch Tang	JM0014203
2	1-1/4" Pin adapter for Grain Cart Spade Hitch	JM0019032
3	Hitch Weldment	JM0017978
4	Grain Cart Draw Bar	JM0017976
5	1-1/4" Pin adapter for Grain Cart Spade Hitch	JM0019032
6	1-1/2" Pin adapter for Grain Cart Clevis Hitch Tang	JM0014203
7	3/4"-16 X 3" Fine Thread Hex Bolt (164150)	JM0002107
8	1"-8 Gr5 Z Centerlock Hex Nut (HLN-1)	JM0002149
9	2-1/2" Hitch Spindle Sleeve	JM0018258
10	2-1/2" Hitch Spindle, 360-14 through 875-18, Non-Scale (212PC)	JM0018259
10	2-7/8" x 14" Non Scale Hitch Bar	JM0025787
11	3/4"-16 X 3" Gr8 YZ Hex Bolt (343HB)	JM0018542
12	1"-8 X 4-1/2" Gr5 Z Hex Bolt (1412G5B)	JM0016687
13	2-1/2" Hitch Spindle Collar	JM0018219
13	2-7/8" Hitch Spindle Collar	JM0025785
14	Hitch Spool Plate 2-1/2" (HSPS-1)	JM0018192
14	Hitch Spool Plate 2-7/8" (HSPS-2)	JM0025783
15	1"-8 X 7-1/2" Gr8 YZ Hex Bolt (165410)	JM0017944
16	Weigh Tronix - 2-1/2" Weigh Bar, 360-14 through 875-18, 3 Point Scale System (25WB)	JM0024206
16	Digi-Star - 2-1/2" Weigh Bar, 360-14 through 875-18, 3 Point Scale System (250WB)	JM0024207
17	1"-8 X 5-1/2" Gr5 Z Hex Bolt (1512G5B)	JM0002110
18	3/4" Zinc Finish Lock Washer (160018)	JM0018544
19	Weigh Bar Receiver Weldment Scales 2-7/8" (WBW-278)	JM0000019
19	Weigh Bar Receiver Weldment Scales 2-1/2" (WBW-1)	JM0024208
20	40k LB Safety Chain (One Chain)	JM0029261

Driveline Assembly



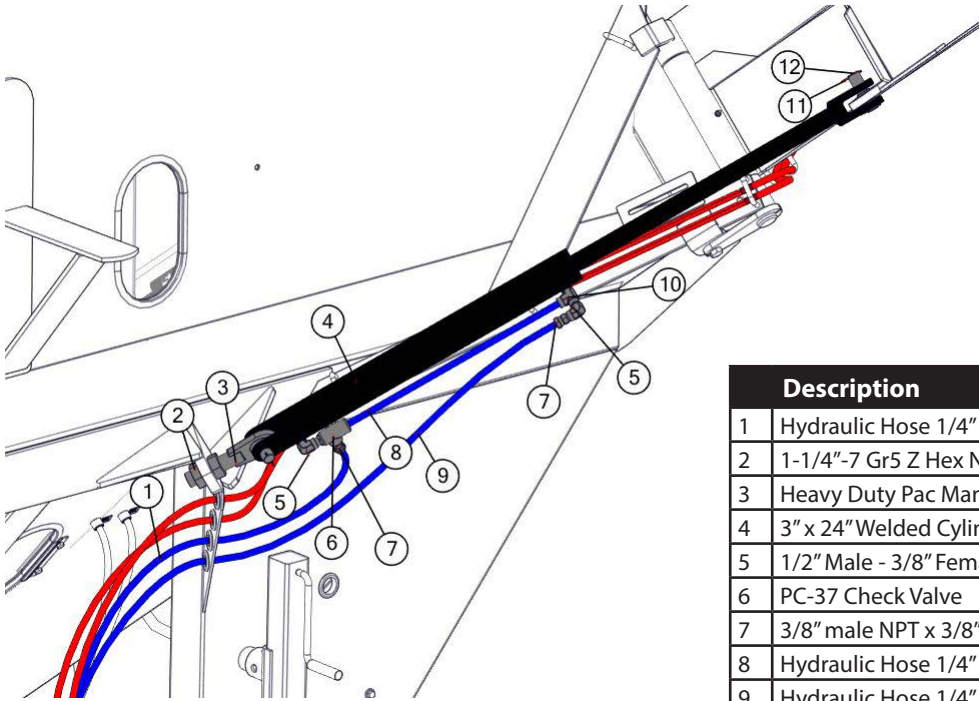
Description	Part No.
1 97" Drive Shaft Guard (1326, 1401)	JM0017577
2 PVC (Cut to Length)	JM0027151
3 190" x 1-3/4" Drive Shaft (DS-134190)	JM0026235
4 5/8"-11 x 1-3/4" Gr5 Z Hex Bolt	JM0016681
5 1-3/4" 4 Bolt Flange Bearing, 5/8" Bolt Hole (UCF-20928)	JM0018774
6 5/8"-11 Gr5 Z Centerlock Hex Nut	JM0002146
7 U-Joint Shield	JM0012698
8 3/8" x 1-1/2" Half Moon Key	JM0018772
9 3/8"-16 x 1/2" Hex Head Set Screw	JM0019044
10 44 Series U-Joint (252288) - Weasler 44063-A1	JM0017957
11 5/8"-11 Gr5 Z Centerlock Hex Nut	JM0002146
12 1-3/4" Output Shaft Gearbox Spline Washer (3" OD) (18" & 20")	JM0000083
13 130 Degree Gearbox Complete (Superior) (18-20") (H130-9)	JM0017840
14 1/2"-13 x 1-1/2" Gr5 Z Hex Bolt	JM0002100
15 1/2" Gr2 Z Lock Washer	JM0019021
16 5/8"-11 x 3" Gr5 Z Hex Bolt	JM0002105
17 Cross Kit (U-Joint) (44R) (CK-44R)	JM0017958

Upper & Lower Auger Assembly



Description	Part No.
1 22" Upper Auger Tube Assembly 130", 1050-22, 1051-22, 1150-22, 1151-22, 1325-22, 1326-22	JM0018304*
1 22" Longer Upper Auger Tube Assembly 142"	JM0018418*
2 22" Upper Flighting (leaned) welded to 6" x 121" pipe with 9" shaft (UF-22GS)	JM0019702
2 22" Upper Flighting (leaned) welded to 6" x 121" pipe with 9" shaft for slider auger (UF-22GS-S)	JM0019700
2 22" Longer Upper Flighting (leaned) welded to 6" x 121" pipe with 21" shaft (LUA-22-F)	JM0019696
3 1/2"-13 Gr5 Z Centerlock Hex Nut	JM0001511
4 Compression Spring (CMSUAA-4)	JM0018559
5 1-1/4"-12 PN Gr5 Hex Jam Nut	JM0001606
6 1-1/4" Flange Bearing, 4 hole (GRAF-206)	JM0018560
7 1/2"-13 x 5-1/2" Gr5 Z Hex Bolt	JM0001498
8 1-1/2" Spacer	JM0016792
9 22" Hinge Pin Weldment	JM0025101
10 5/8"-11 Gr5 Z Centerlock Hex Nut	JM0002146
11 5/8"-11 x 1-3/4" Gr5 Z Hex Bolt	JM0016681
12 1"-8 Gr5 Z Hex Nut	JM0002127
13 22" Drive Dog Weldment 1326, 1401 (DDW-21222)	JM0002919
14 1"-8 x 6" Gr8 YZ Hex Bolt	JM0074245
15 2-1/2" ID Bronze Bushing (BB-212)	JM0016841
16 3/8"-16 x 1" Gr8 Z Hex Bolt	JM0001485
17 22" Hanger Bushing Assembly (HBA-22)	JM0019656
18 Lower Auger Liner for 1325, 1326, 1400, 1401 with 22" Diameter Auger (LAL-22135)	JM0026576
19 Indicator Rod 22"	JM0019396
20 Auger Gate Cover (See Grain Cart Assembly)	-----
21 3-3/4" OD x 3" Spline Coupler (SC-334X3)	JM0009701
22 LF- 22- 162-3/4" - RH 1300 Body Grain Cart Bottom Flighting Weldment	JM0019676

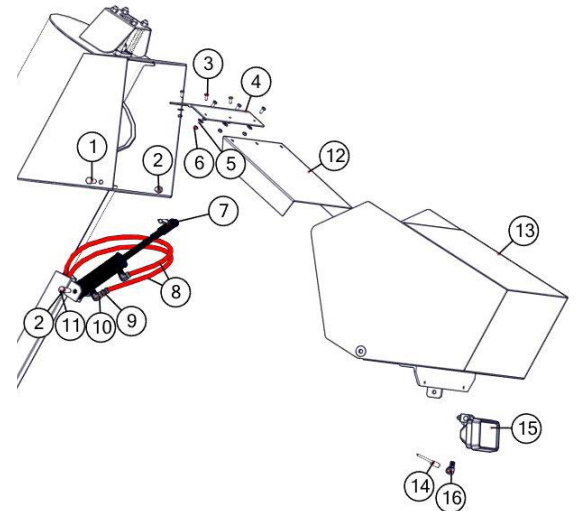
Lift Cylinder



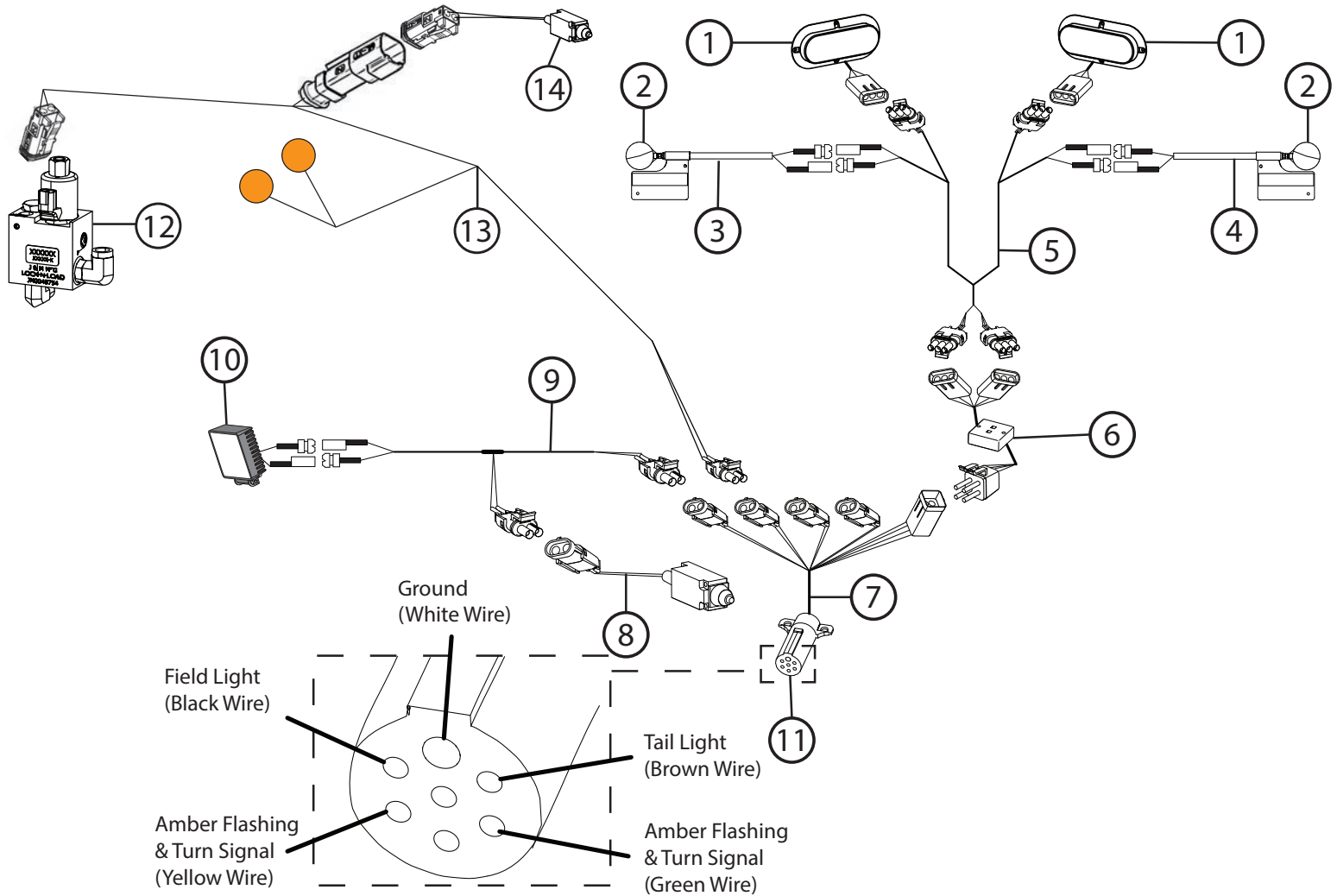
Description	Part No.
1 Hydraulic Hose 1/4" x 160"	JM0024898
2 1-1/4"-7 Gr5 Z Hex Nut	JM0001700
3 Heavy Duty Pac Man Weldment	JM0021417
4 3" x 24" Welded Cylinder	JM0019644
5 1/2" Male - 3/8" Female NPT 90 degree Street Elbow	JM0010292
6 PC-37 Check Valve	JM0018233
7 3/8" male NPT x 3/8" female NPT swivel; WITH .062 orifice	JM0018362
8 Hydraulic Hose 1/4" x 21"	JM0024896
9 Hydraulic Hose 1/4" x 176"	JM0024899
10 3/8" male NPT x 3/8" female NPT x 3/8" female NPT; Street T	JM0018266
11 Cotter Pin	JM0003064
12 1" X 3.40" Clevis Pin	JM0003065

Flow Control Spout

Description	Part No.
1 1/2"-13 x 2" Gr5 Z Hex Bolt	JM0001593
2 1/2"-13 Gr5 Z Centerlock Hex Nut	JM0001511
3 1/4"-20 x 5/8" Gr5 Z Hex Bolt	JM0001479
4 22" Hinge Plate (22" diameter auger)	JM0018582
5 1/4" USS Flat Washer	JM0003090
6 1/4"-20 Gr5 Z Centerlock Hex Nut	JM0001505
7 1/2" x 1-3/4" Pin	JM0018264
8 1/4" x 370" Hydraulic Hose (1050, 1051, 1150, 1151)	JM0024908
9 1/4" male NPT swivel with .032 orifice	JM0020113
10 1/4" male NPT X 1/4" female NPT rigid; 90 degree elbow	JM0020115
11 1/2"-13 x 2" Gr5 Z Hex Bolt	JM0001593
12 22" Baffle Plate (old style) (tapered) (22" diameter auger)	JM0026697
12 22" Baffle Plate (new style) (rectangular) (22" diameter auger)	JM0010977
13 22" Flow Control Spout Housing (22" diameter auger)	JM0018284
14 Mercury Switch	JM0017896
15 Field Assembly Light	JM0001881
16 3/8" Wire Loom	JM0020450

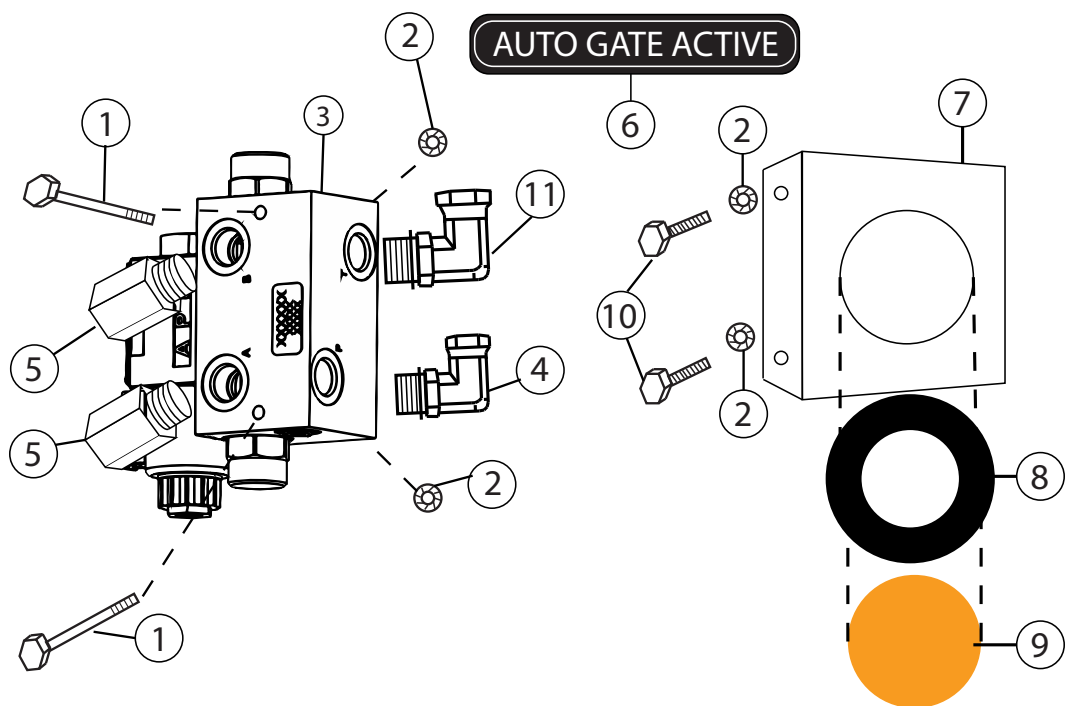


Lights and Wiring



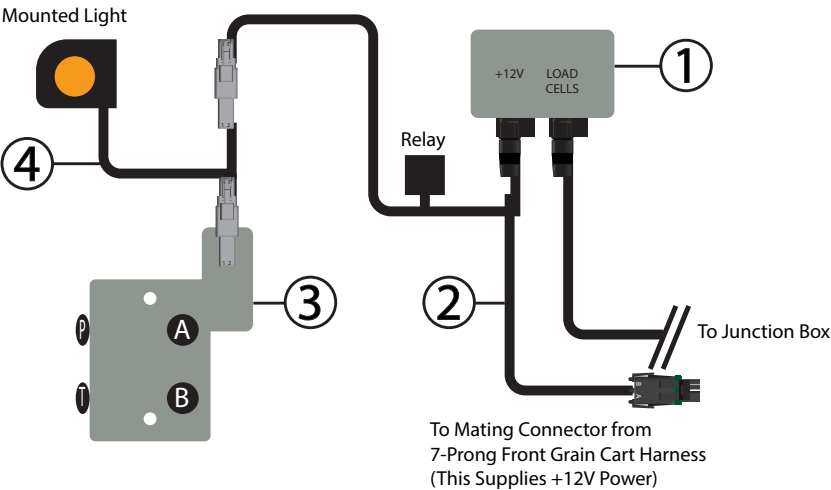
Description	Part No.
1 Red Oval LED Tail Light	JM0034389
2 LED Amber Light (Circular)	JM0018819
3 Extendable Amber Light Assembly (Left Side)	JM0018817
4 Extendable Amber Light Assembly (Right Side)	JM0018826
5 Wiring Harness, Rear Half of Grain Cart	JM0020437
6 Light Enhancer and Adapter Kit (3 wires)	JM0010566
7 Main Harness with 7-prong Connector End for Grain Cart	JM0020439
8 Limit Switch for Field Light (ME-8111)	JM0036040
9 Field Light Wire (Limit Switch)	JM0048128
10 LED Field Light	JM0001881
11 7-Prong Connector	JM0010528
12 Lock and Load Assembly	JM0048754
13 Grain Cart Lock and Load Harness	JM0044755
14 Limit Switch for Lock and Load - 72" Long Cable	JM0046717

Auto-Gate Shut-Off Assembly



	Description	Part No.
1	1/4"-20 x 3-1/2" Gr5 Z Hex Bolt	JM0046621
2	1/4"-20 Gr5 Z SF Hex Nut	JM0001630
3	Auto-Gate Hydraulic Valve	JM0026247
4	1/2" Male ORB x 3/8" Female NPT Swivel; 90 Degree Elbow	JM0027285
5	3/8" Female NPT x 1/2" Male ORB; Straight	JM0034657
6	Auto Gate Active Decal	JM0046612
7	3-1/2" Round LED Mount	JM0034956
8	3-1/2" Round LED Grommet	JM0001902
9	3-1/2" Amber Round LED Light	JM0001895
10	1/4"-20 x 3/4" Gr5 Z SF Hex Bolt	JM0001642
11	1/2" Male ORB x 1/2" Female NPT Swivel; 90 Degree Elbow	JM0047392

Auto-Gate Shut-Off Wiring Schematic

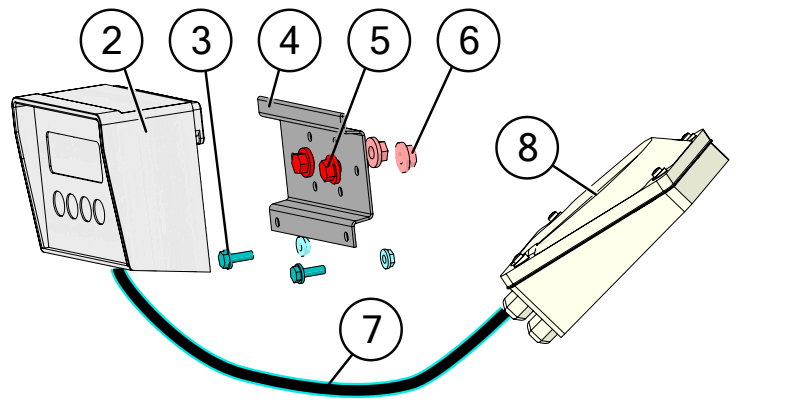
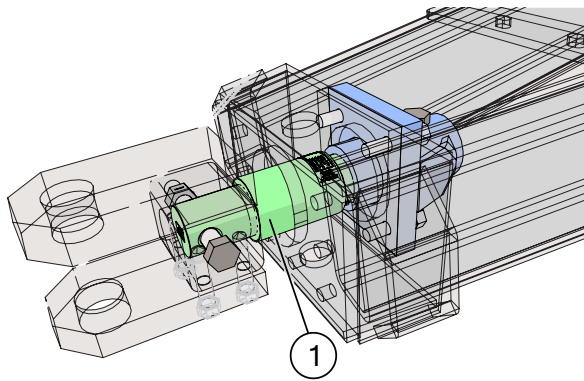


	Description	Part No.
1	GT 560 Digi-Star Scale Display Monitor	JM0044177
2	Auto-Gate Harness (Standard GT 560)	JM0026813
2	J&M Relay Harness (1 per IFM-GS-1P(auto-gate))	JM0037374
3	Auto-Gate Hydraulic Valve	JM0026247
4	Auto Gate Light Harness (LED light "Y" Cable)	JM0046624

Note: Mount the hydraulic valve after all the hoses are attached but not tightened. This will ensure the hoses will reach.



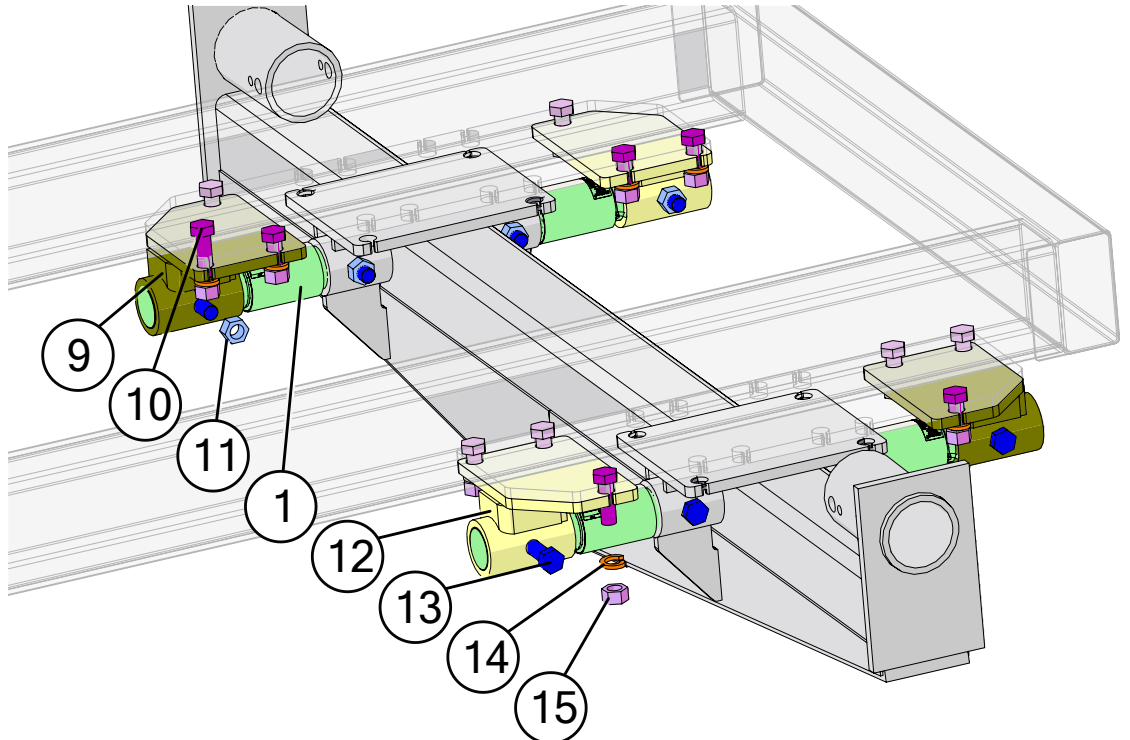
5-Point Scale System for Single Wheel Bolt on Axles



GT 400

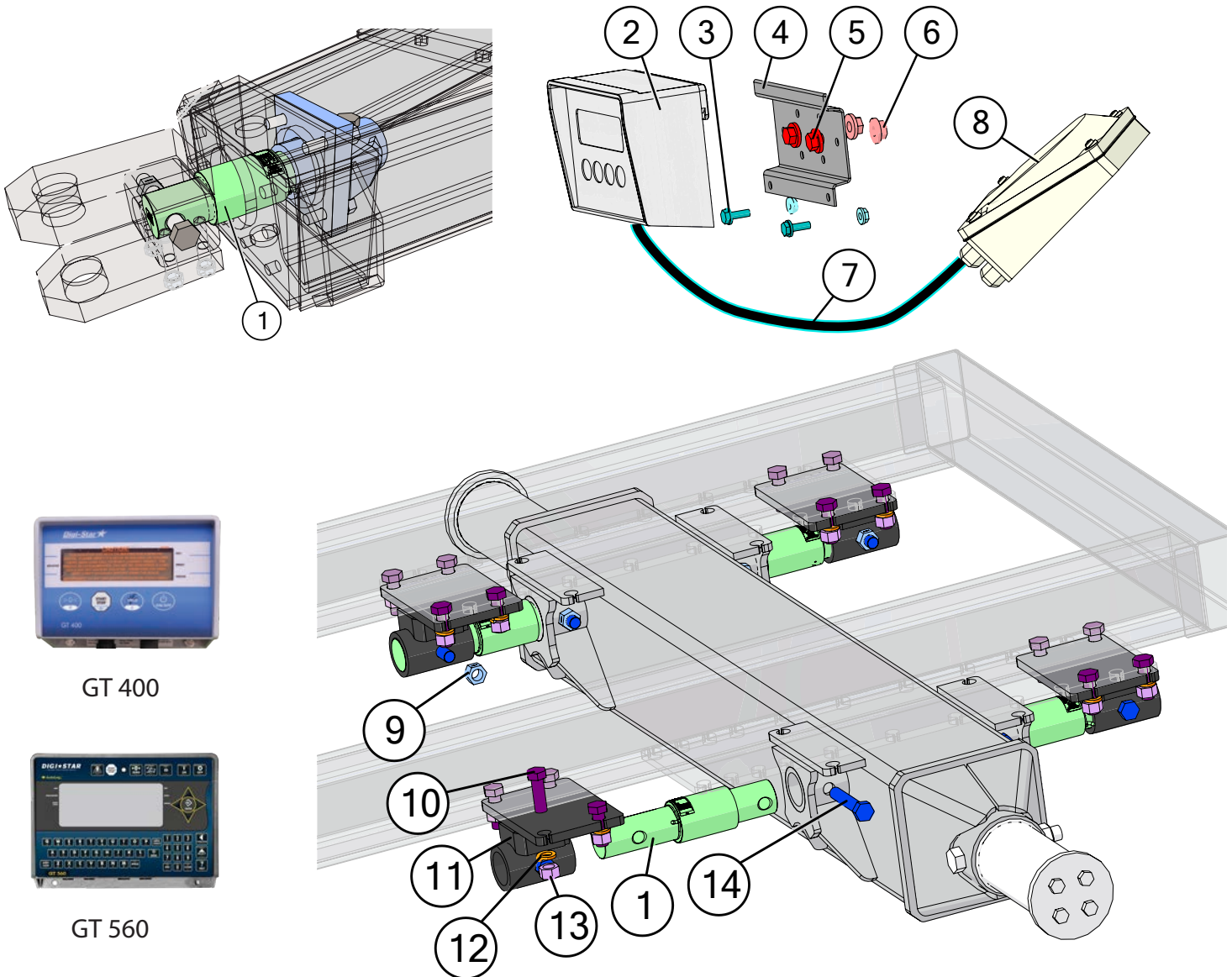


GT 560



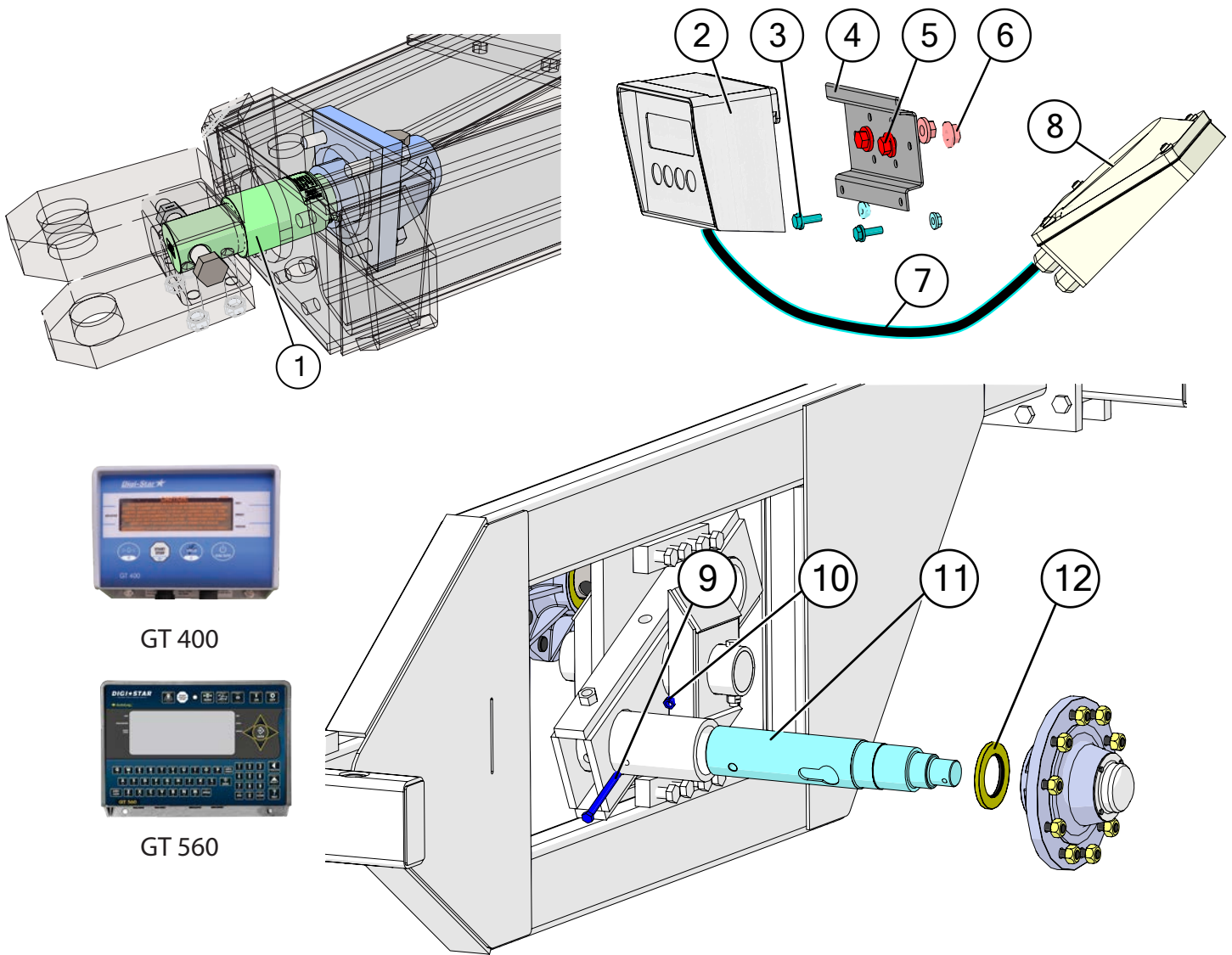
	Description	Part No.
1	2-7/8" Digi-Star Weigh Bar, 1" Pin Hole (278WB-T1)	JM0000355
2	GT 400 Digi-Star Scale Display Monitor	JM0019040
2	GT 560 Digi-Star Scale Display Monitor	JM0044177
3	1/4"-20 x 3/4" Gr5 Z Hex Bolt	JM0001507
4	GT 560 Scale Monitor Display Bracket	JM0046976
4	GT 400 Scale Monitor Display Bracket	JM0000361
5	3/8"-16 x 1" Gr5 Z SF Hex Bolt	JM0002092
6	3/8"-16 Gr5 Z SF Hex Nut	JM0002152
7	8' Cable from J-Box to Indicator (Digi-Star)	JM0047238
8	Digi-Star 6-Point Junction Box (JB-5)	JM0019038
9	2-7/8" Weigh Bar Weldment, Rear Left, Front Right (6-1/8" Spool)	JM0000354
10	1"-8 x 3" Gr5 Z Hex Bolt	JM0016686
11	1"-8 Gr5 Z Centerlock Hex Nut	JM0002149
12	2-7/8" Weigh Bar Weldment, Rear Right, Front Left (6-1/8" Spool)	JM0018985
13	1"-8 x 5-1/2" Gr5 Z Hex Bolt	JM0002110
14	1" Zinc Finish Lock Washer	JM0019203
15	1"-8 Gr5 Z Hex Nut	JM0002127
16	20' Extension Cord to Mount Indicator in Cab (ECI-2)	JM0025816
17	Flash Drive Memory Stick for Digi-Star GT 560 (114991)	JM0025819

5-Point Scale System for Tracks



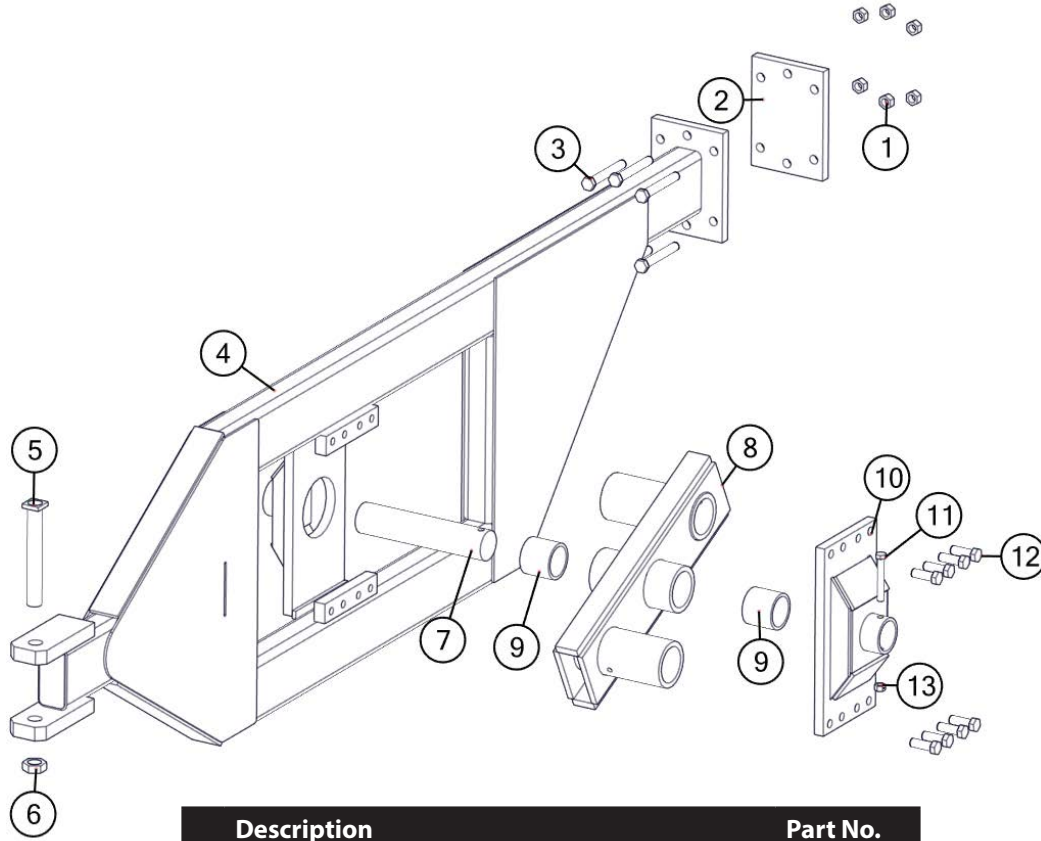
Description	Part No.
1 2-7/8" Digi-Star Weigh Bar, 1" Pin Hole (278WB-T1)	JM0000355
2 GT 400 Digi-Star Scale Display Monitor	JM0019040
2 GT 560 Digi-Star Scale Display Monitor	JM0044177
3 1/4"-20 x 3/4" Gr5 Z Hex Bolt	JM0001507
4 GT 560 Scale Monitor Display Bracket	JM0046976
4 GT 400 Scale Monitor Display Bracket	JM0000361
5 3/8"-16 x 1" Gr5 Z SF Hex Bolt	JM0002092
6 3/8"-16 Gr5 Z SF Hex Nut	JM0002152
7 8' Cable from J-Box to Indicator (Digi-Star)	JM0047238
8 Digi-Star 6-Point Junction Box (JB-5)	JM0019038
9 1"-8 Gr5 Z Centerlock Hex Nut	JM0002149
10 1"-8 x 3" Gr5 Z Hex Bolt	JM0016686
11 2-7/8" Weigh Bar Weldment for Track Beam (WBW-278T)	JM0018207
12 1" Zinc Finish Lock Washer	JM0019203
13 1"-8 Gr5 Z Hex Nut	JM0002127
14 1"-8 x 5-1/2" Gr5 Z Hex Bolt	JM0002110
15 20' Extension Cord to Mount Indicator in Cab (ECI-2)	JM0025816
16 Flash Drive Memory Stick for Digi-Star GT 560 (114991)	JM0025819

5-Point Scale System for Walking Tandem Dual Wheels



Description	Part No.
1 2-7/8" Digi-Star Weigh Bar, 1" Pin Hole (278WB-T1)	JM0000355
2 GT 400 Digi-Star Scale Display Monitor	JM0019040
2 GT 560 Digi-Star Scale Display Monitor	JM0044177
3 1/4"-20 x 3/4" Gr5 Z Hex Bolt	JM0001507
4 GT 560 Scale Monitor Display Bracket	JM0046976
4 GT 400 Scale Monitor Display Bracket	JM0000361
5 3/8"-16 x 1" Gr5 Z SF Hex Bolt	JM0002092
6 3/8"-16 Gr5 Z SF Hex Nut	JM0002152
7 15' Cable from J-Box to Indicator (Weigh-Tronix)	JM0050445
8 Avery Weigh-Tronix Junction Box 5 pt (JB-5-WT)	JM0019960
9 5/8"-11 x 6.5" Gr8 YZ Hex Bolt	JM0050351
10 5/8"-11 Gr5 Z Centerlock Hex Nut	JM0002146
11 4-1/2" Weigh-Tronix Weigh Spindle (AWT27-500002) (450WTS)	JM0019970
12 Seal (4-1/4" ID, 6" OD) for Hub (CR-43771)	JM0018955
13 20' Extension Cord to Mount Indicator in Cab (ECI-2)	JM0025816
14 Flash Drive Memory Stick for Digi-Star GT 560 (114991)	JM0025819

Walking Tandem Dual Wheel Assembly

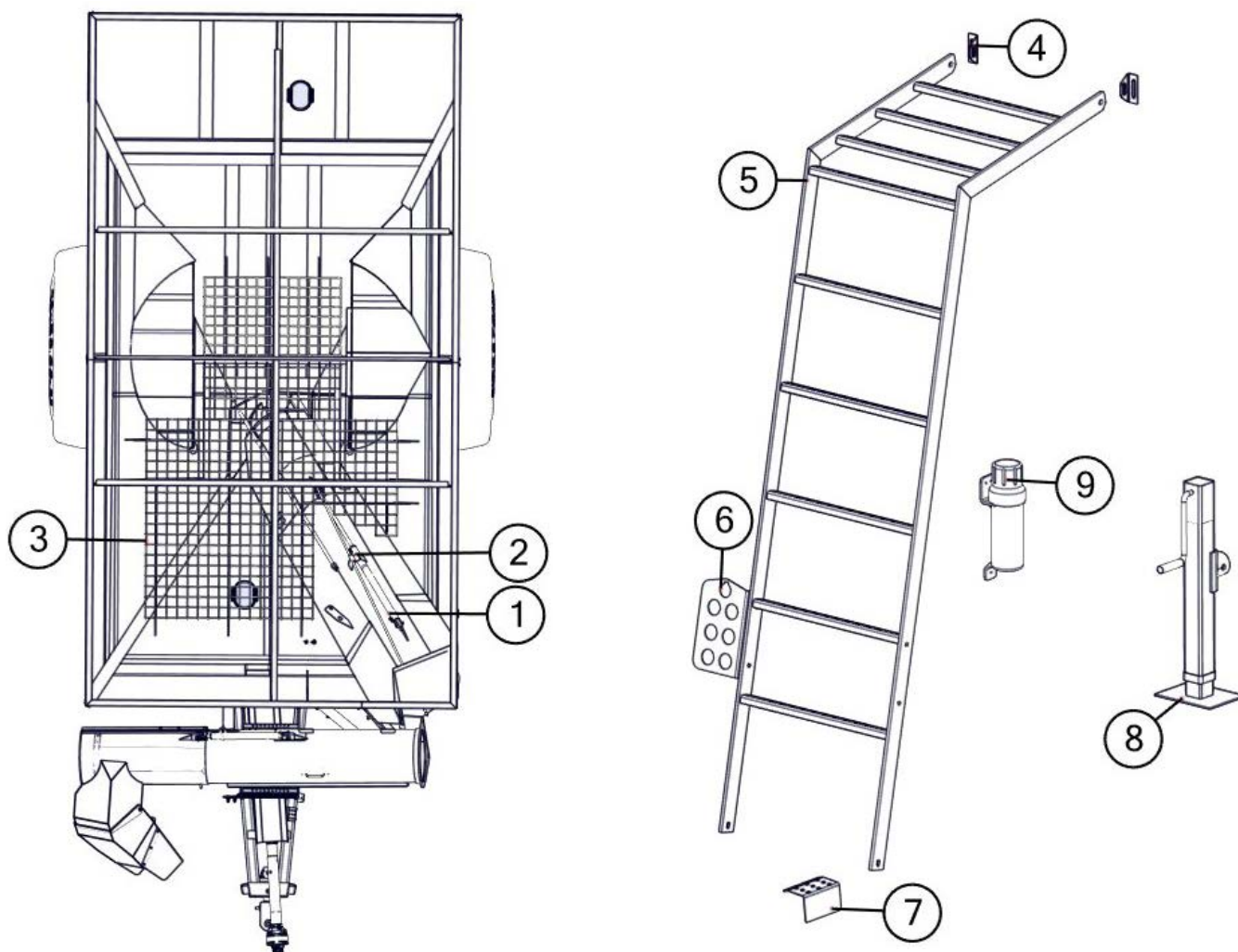


	Description	Part No.
1	1"-14 Gr8 YZ Hex Nut	JM0019926
2	1-1/4" x 8" x 14" Walker Frame Clamp Plate (114814CP)	JM0010145
3	1"-14 x 7-1/2" Gr8 YZ Hex Bolt	JM0019925
4	Walker Main Frame Weldment (Left)(FW-1L)	JM0019922*
4	Walker Main Frame Weldment (Right)(FW-1R)	JM0010082*
5	1-3/4" x 13-1/2" Bolt (1341312HB)	JM0019981
6	1-3/4"-12 Z Gr5 Hex Jam Nut	JM0009752
7	3-3/4" x 17-1/2" Pivot Pin (334PP)	JM0019928
8	Walker - Triple Pivot Weldment - OAS (PBW-1R)	JM0010170*
8	Walker - Triple Pivot Weldment - AS (PBW-1L)	JM0025721*
9	3-3/4" ID, 4-1/2" OD Bronze Bushing (4" Lg) (BB-334)	JM0010570
10	Walker Pivot Center Weldment (PCW-1)	JM0010076*
11	3/4"-10 x 5-1/2" Gr5 Z Hex Bolt	JM0015522
12	1"-14 x 3" Gr8 YZ Hex Bolt	JM0019924
13	3/4"-10 Gr5 Z Centerlock Hex Nut	JM0002147

*-R = Red
 *-B = Blue
 *-G = Green
 *-Y = Yellow
 *-BLK = Black

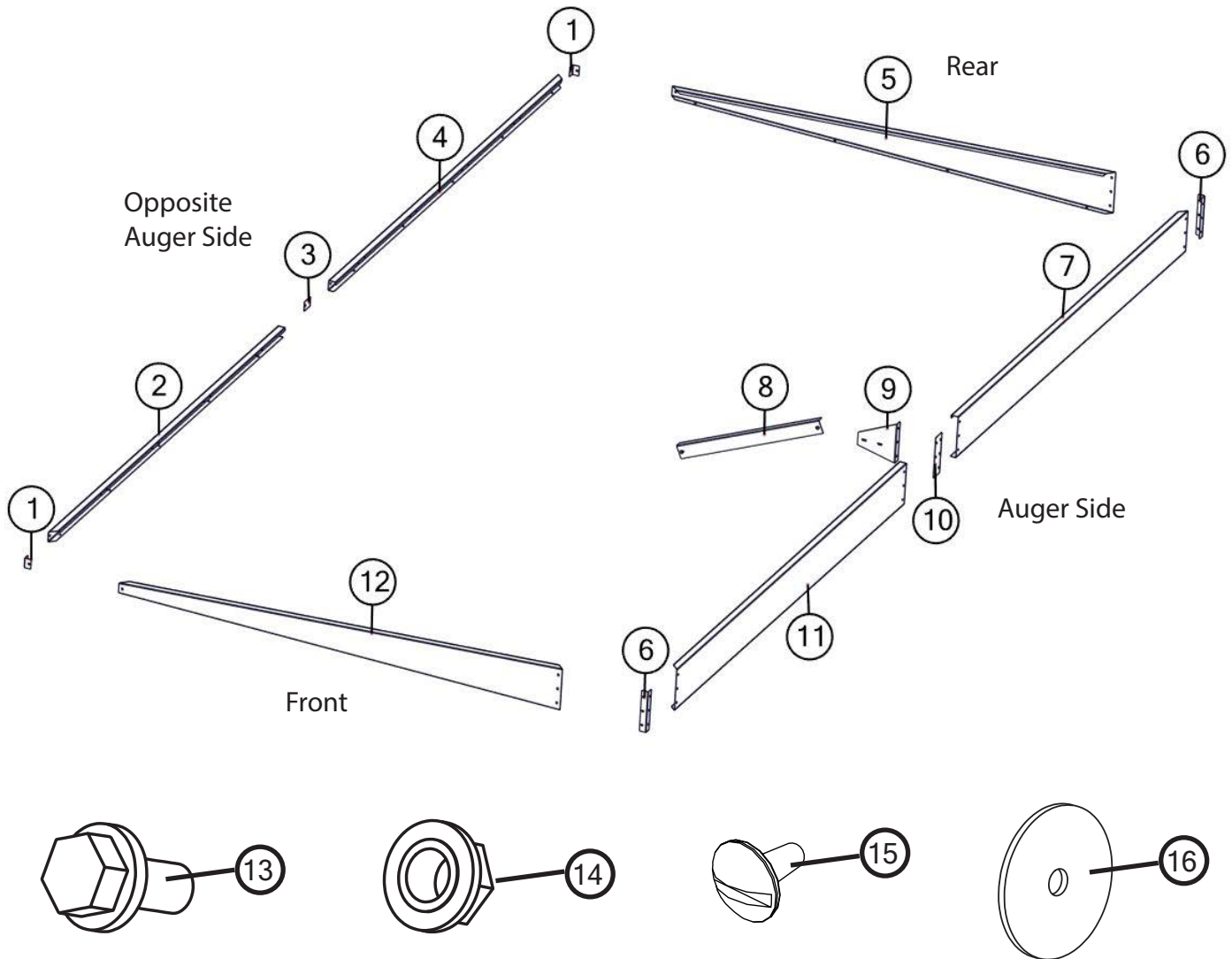
When requesting an item with color, end the part number with -R, -B, -G, -Y, or -BLK. (e.g. JM0000000-R)

Miscellaneous



	Description	Part No.
1	1/4" x 43" Hydraulic Hose 43inch4M3k-4G-6MPX-4G-6MP	JM0024904
2	1/2" x 43" Hydraulic Hose 43inch8M3k-8G-8MPX-8G-6MP	JM0024906
3	Steel Grate (1326, 1401)	JM0017930
4	Universal Ladder Bracket	JM0016922
5	4 Rung Ladder Assembly (LA-1050)	JM0018805
6	Hose Holder Bracket for Standard Grain Cart (HHB-1C)	JM0012711
7	Small Step on Grain Cart Frame	JM0028444
8	Jack Stand Assembly w/Plate (10,000 lbs.)	JM0020936
9	Operator's Manual Canister	JM0010115
10	30k Lb Safety Chain	JM0031890

Sideboards

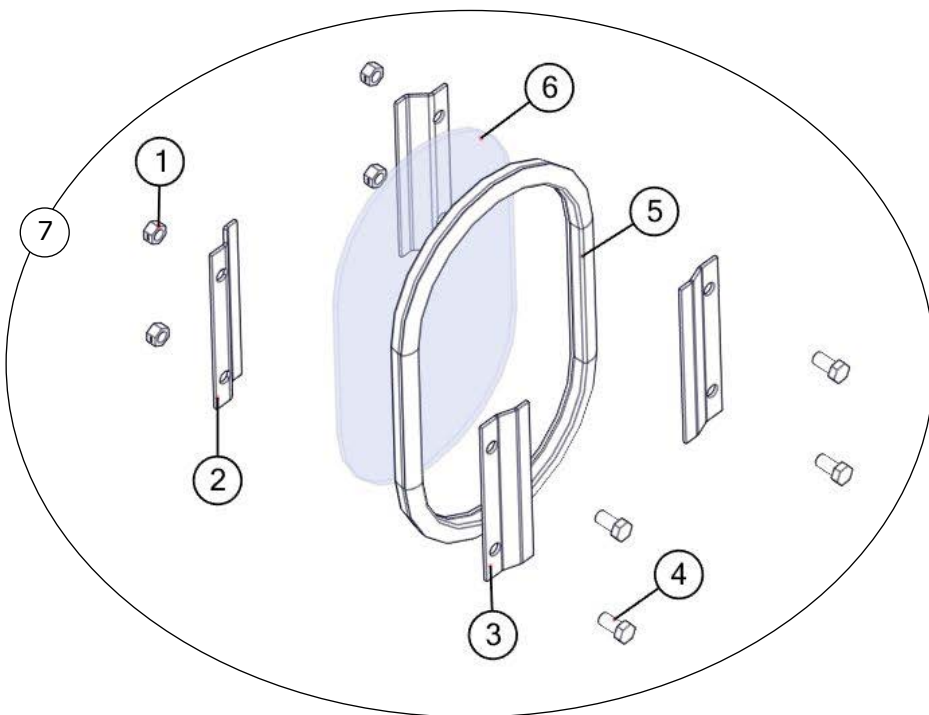


	Description	Part No.
1	Low Sideboard Corner 3" (1312, 1326)(TTE-1325LSC)	JM0009703
2	Front Low Sideboard 153" x 3-1/4" (1312, 1326)(TTE-1325LSF)	JM0017351*
3	Low Sideboard Splice 3" x 4" (1312, 1326) (TTE-1325LSP)	JM0009704
4	Back Low Sideboard 153" x 3-1/4" (1312, 1326)(TTE-1325LSR)	JM0017350*
5	Back Endboard 141" x 13" (1312, 1326)(TTE-1325R)	JM0009596*
6	High Sideboard Corner 13" (1312, 1412, 1522, 1326, 1401)(TTE-1325HSC)	JM0009700
7	Back Half High Sideboard 153" x 13-1/4" (1312, 1412, 1522, 1326, 1401) (TTE-1325HSR)	JM0017484*
8	High Sideboard Splice 13" x 4" (1312, 1412, 1522, 1326, 1401)(TTE-1325HSP)	JM0009702
9	High Sideboard Brace Plate 12-1/2" (1312, 1412, 1326, 1401)	JM0021202
10	48" Leaner Inside Brace (Sideboard Brace)	JM0010933
11	1326 Front Half High Sideboard	JM0017349
12	1326 Front Endboard Splice	JM0009705
13	1326 Front Endboard (TTE-1325F)	JM0017352*
14	3/8"-16 Gr5 Z SF Hex Nut	JM0002152
15	3/8"-16 x 1" Gr5 Z Pan Head Bolt	JM0002892
16	7/16" ID x 2-1/2" OD x 1/8" Z USS Flat Washer	JM0018982

*-R = Red
 *-B = Blue
 *-G = Green
 *-Y = Yellow
 *-BLK = Black

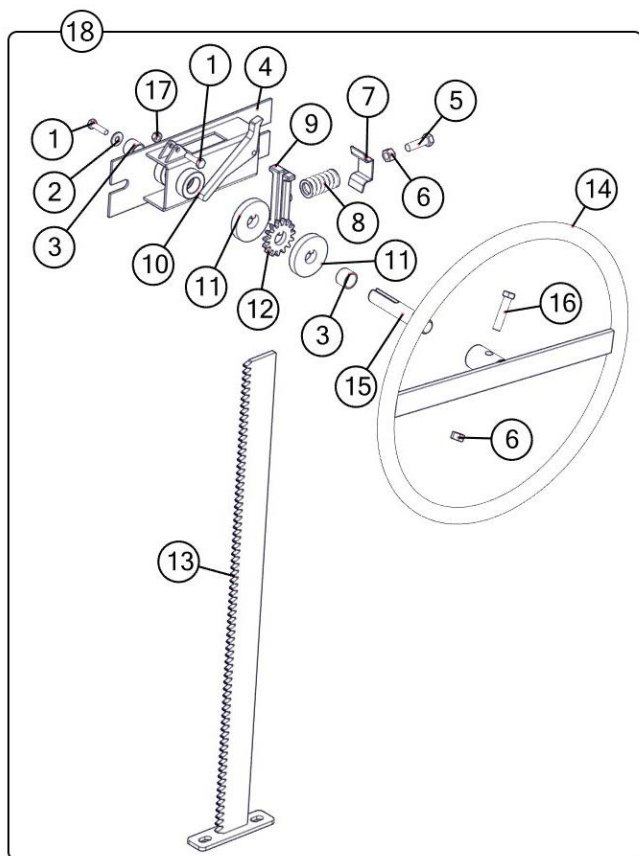
When requesting an item with color, end the part number with -R, -B, -G, -Y, or -BLK. (e.g. JM0000000-R)

Inspection Windows



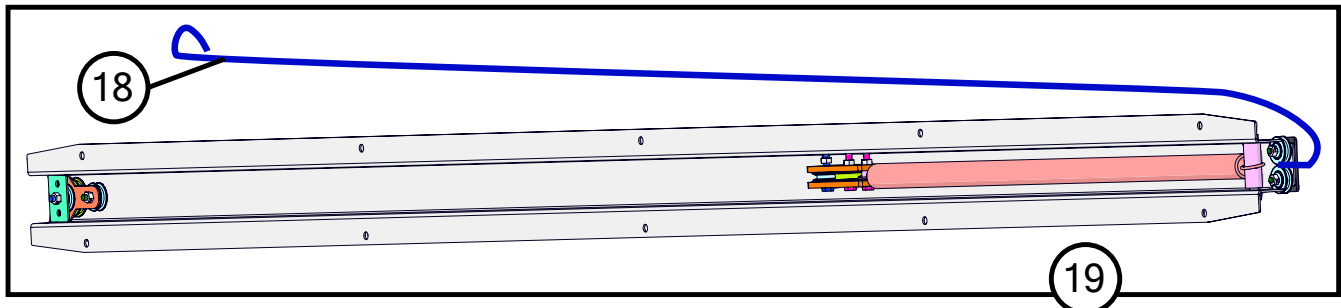
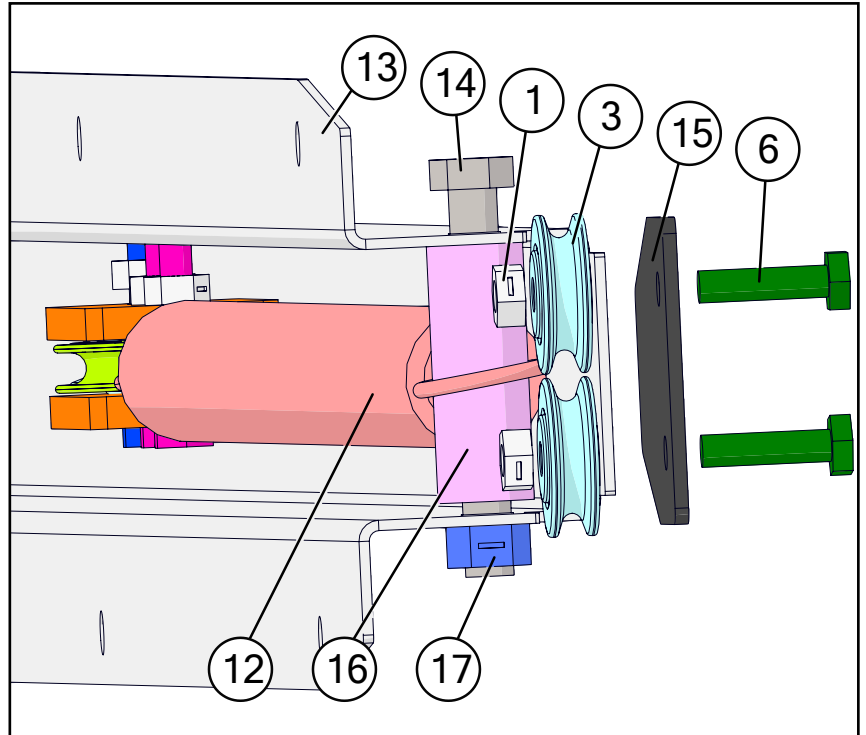
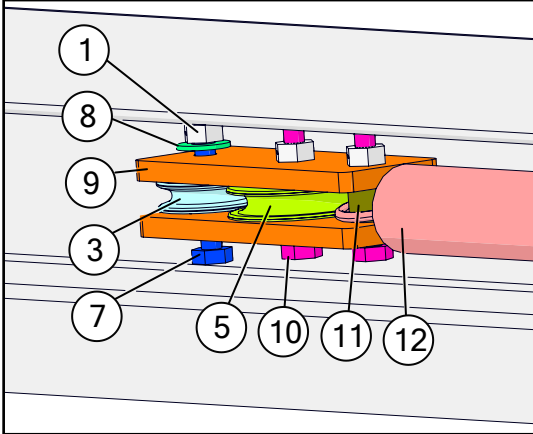
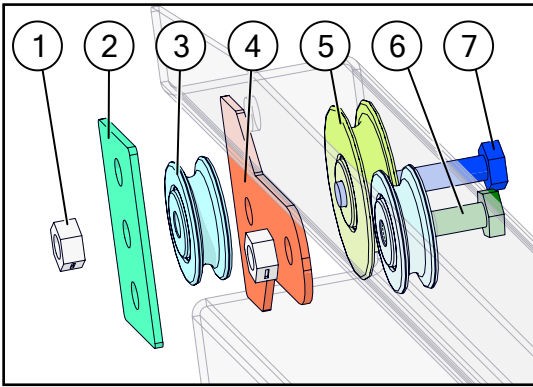
	Description	Part No.
1	3/8"-16 Gr5 Z Centerlock Hex Nut	JM0001512
2	Inside Window Clip - Deep	JM0000253
3	Outside Window Clip - Shallow	JM0000256
4	3/8"-16 x 3/4" Gr5 Z Hex Bolt	JM0001663
5	Window Seal 3/4" S' Strip	JM0000254
6	Standard Inspection Window	JM0000255
7	Inspection Window Kit	JM0025752

Door Wheel Assembly



	Description	Part No.
1	1/4"-20 x 1" Gr5 Z Hex Bolt	JM0002095
2	1/4" ID, 3/4" OD Z Flat Washer	JM0003090
3	.754 ID x .874 OD x .625 LG Bronze Bushing (BB-34)	JM0009455
4	Nylon Guided Rack Housing Weldment	JM0030635
5	3/8"-16 x 1-1/4" Gr5 Z Hex Bolt	JM0016675
6	3/8"-16 Gr5 Z Hex Nut	JM0001707
7	Scrubber Spring Plate (ST Manual Door) (Door Wheel)	JM0002851
8	Compression Spring (1" x 1-3/4") for Door Assembly & Tongue Latch	JM0001688
9	Nylon Track Guide For Door Wheel	JM0029354
10	Flip Lock For Door Rack	JM0029459
11	Keyway Washer for Door Rack	JM0029454
12	15 Tooth Sprocket - 3/4" Bore w/ Key	JM0029455
13	Rack Track Weldment for Door (27-1/2")	JM0030634
14	Rack Wheel Weldment	JM0028897
15	Stub Shaft 3/4" x 4 1/8" w/ Threaded End	JM0029440
16	3/8"-16 x 1-3/4" Gr5 Z Hex Bolt	JM0002097
17	1/4"-20 Gr5 Z Centerlock Hex Nut	JM0001505
18	Complete Door Wheel Assembly (27-1/2") (2016 & Newer)	JM0029460

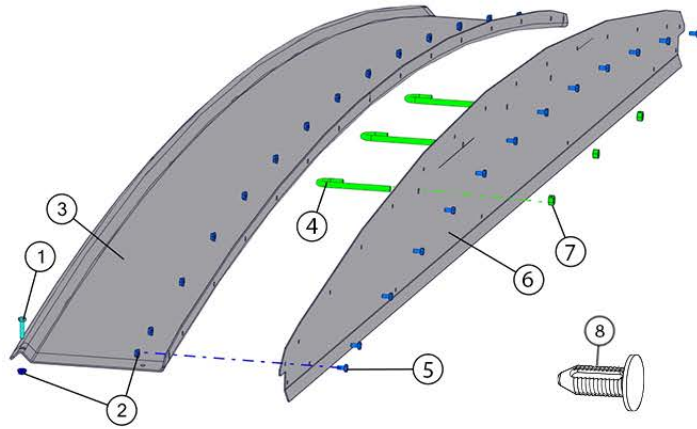
Spring Return Assembly



	Description	Part No.
1	1/4"-20 Gr5 Z Centerlock Hex Nut	JM0001505
2	Aluminum Spacer for Spring Return (1-3/8" x 2-3/16") Rectangular	JM0002445
3	1-1/4" Idler Pulley (1/4" ID)	JM0002439
4	Large Spring Return Pulley Spacer (2 Holes)	JM0018897
5	1-5/8" Idler Pulley (Long Spring Return)	JM0012970
6	1/4"-20 x 1" Gr5 Z Hex Bolt	JM0002095
7	1/4"-20 x 1-1/2" Gr5 Z Hex Bolt	JM0002447
8	1/4" ID, 3/4" OD Z Flat Washer	JM0003090
9	Rectangular Plastic Spacer for Spring Return	JM0012973
10	1/4"-20 x 1-1/4" Gr5 Z Hex Bolt	JM0016673
11	2" Black Plastic Spacer (1/4" ID x 1/2" OD)	JM0002442
12	Spring Return Spring	JM0000207
13	Grain Cart Spring Return Housing	JM0012974
14	3/8"-16 x 3" Gr5 Z Hex Bolt	JM0001666
15	Spring Return Stiffening Plate	JM0034548
16	3/4" x 2" Plastic Spacer	JM0002444
17	3/8"-16 Gr5 Z Centerlock Hex Nut	JM0001512
18	Spring Return Cable (Grain Carts)	JM0012981
19	Spring Return Assembly (Grain Cart)	JM0002911

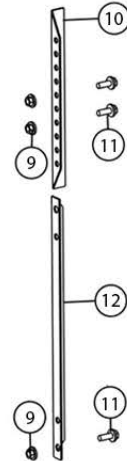
Roll Tarp Assembly

Endcap

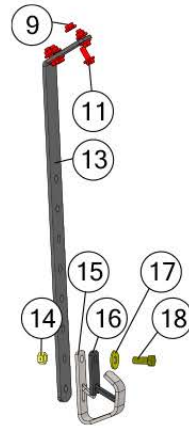


*Hardware shown in green not used in Front Endcap Assembly. Use ribbed rivets in holes where J-bolts aren't used.

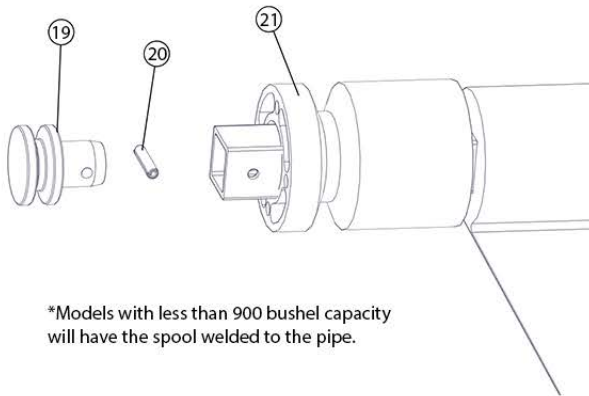
Prop-Up Bars



Crank Handle Holder

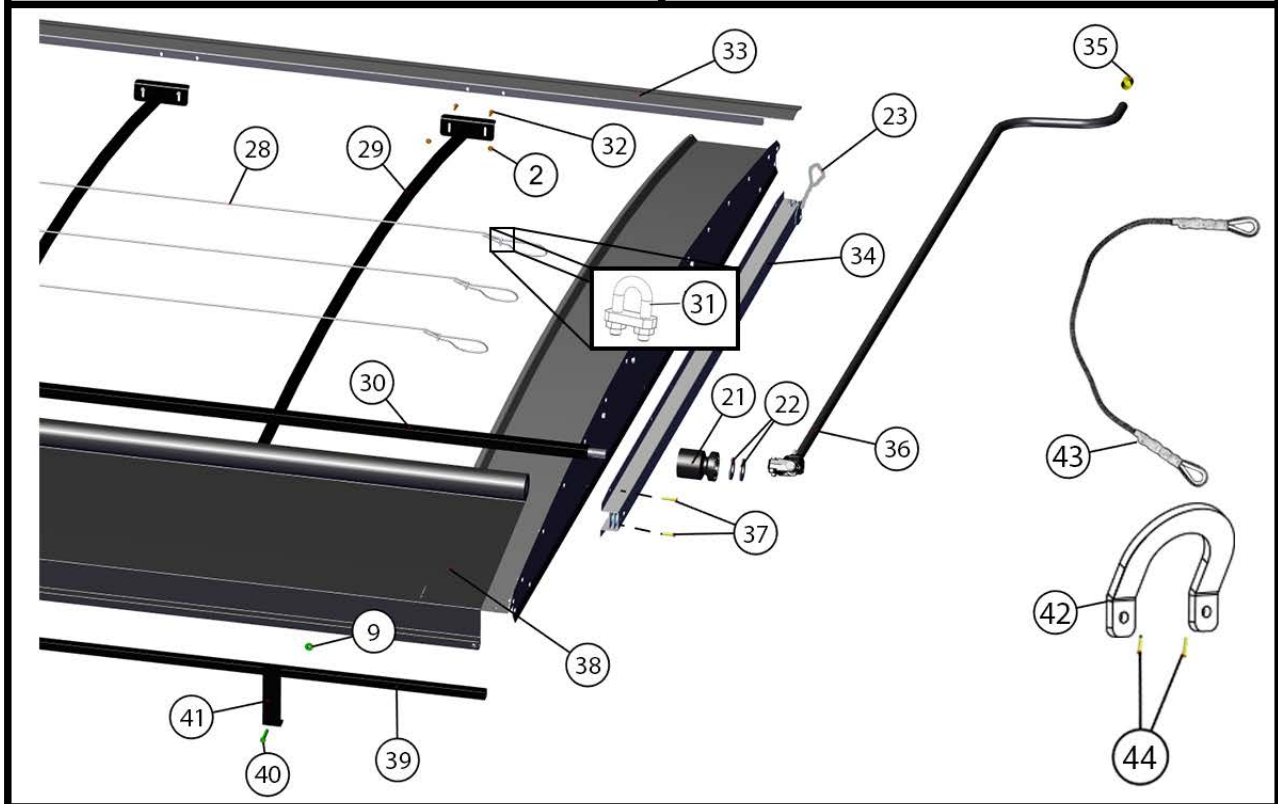
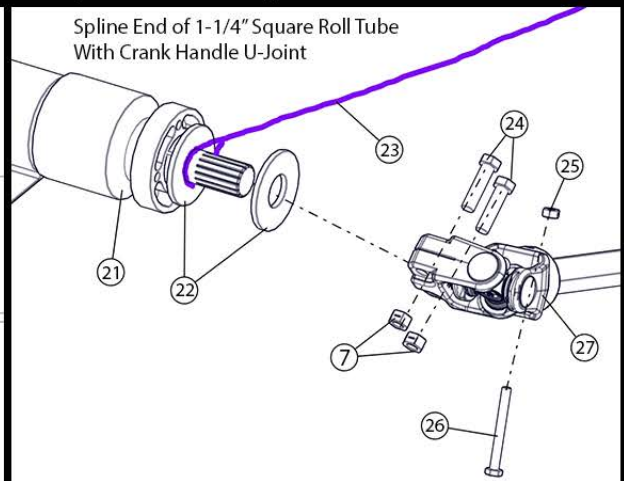


Spool End of 1-1/4" Square Roll Tube



*Models with less than 900 bushel capacity will have the spool welded to the pipe.

Spline End of 1-1/4" Square Roll Tube With Crank Handle U-Joint



Roll Tarp Assembly

	Description	Part No.
1	1/4"-20 x 1-1/4" Gr5 Z Hex Bolt	JM0016673
2	1/4"-20 Gr5 Z SF Hex Nut	JM0001630
3	Arched Top Endcap for Glide Right - Grain Cart 141-1/2"	JM0044731
4	3/8"-16 Gr5 Z J-Bolt (384JB)	JM0001519
5	1/4"-20 x 1/2" Gr5 Z Hex Bolt	JM0001481
6	End Cap Plate for Glide Right - Grain Cart 140-7/8"	JM0045315
7	3/8"-16 Gr5 Z Centerlock Hex Nut	JM0001512
8	3/8" Ribbed Push in Rivet	JM0037396
9	3/8"-16 Gr5 Z SF Hex Nut	JM0002152
10	End Cap Prop - Upper 19"	JM0021404
11	3/8"-16 x 1" Gr5 Z SF Hex Bolt	JM0002092
12	Endcap Prop - Lower 19" (ABS-2)	JM0000179
13	1/4" x 2" x 29" Bar with 120° Bend for Crank Handle (1312,1326,1522)	JM0048492
14	1/2"-13 Gr5 Z Centerlock Hex Nut	JM0001511
15	Crank Holder (zinc plated)(CH-1)	JM0002967
16	Roll Tarp - Handle Hanger Rubber Flap	JM0002551
17	1/2" ID 1-3/8" OD Z Flat Washer	JM0003082
18	1/2"-13 x 1-1/4" Gr5 Z Hex Bolt	JM0001513
19	Spool End for Roll Tube	JM0002449
20	1/4" x 1-1/4" HD Spiro Roll Pin	JM0046782
21	Roll Tarp Guide Roller	JM0038446
22	1" USS Flat Washer	JM0003063
23	Spring Return Cable (Grain Carts)	JM0012981
24	3/8"-16 x 1-1/2" Gr5 Z Hex Bolt	JM0001659
25	1/4"-20 Gr5 Z Centerlock Hex Nut	JM0001505
26	1/4"-20 x 2-1/2" Gr5 Z Hex Bolt	JM0001506
27	Universal Joint - Roll Tarp (SUJ-1)	JM0001517
28	3/16" Cable x 306" (1326, 1401, 1312, 1412, 1522) (316C-1325)	JM0015701
29	137" Arched Tarp Bows (Regular)(137ATB)	JM0000157
30	1-1/4" x 309" Roll Tube for Glide Right (1326, 1401, 1312, 1412, 1522)	JM0048404
31	1/8" Cable Clamp	JM0001514
32	1/4"-20 x 1" Gr5 Z Hex Bolt	JM0002095
33	Tightening Lip Front 153" (1326, 1401, 1312, 1412, 1522)	JM0017842
33	Tightening Lip Rear 153" (1326, 1401, 1312, 1412, 1522)	JM0017843
34	Spring Return Assembly Complete (Grain Cart)	JM0002911
35	S-Cap Yellow - 1.062 ID x 1-1/2" x 1/16	JM0018963
36	12' Crank w/ Splined U-Joint (CUJ-1LN)	JM0019888
37	1/4" x 3/4" Self Tapping Screw	JM0001570
38	Tarp with Rivets (1326, 1401, 1312, 1412) 25'2" x 13'6"	JM0018966
39	1" x 306" Square Tie-Down Tube (1326, 1401, 1312, 1412, 1522)(1325TT)	JM0018962
40	3/8"-16 x 2" Gr5 Z Hex Bolt	JM0001510
41	Tarp Stop Bracket (TSB-1)	JM0000187
42	Tarp Rope Bracket	JM0047700
43	Tarp Rope Assembly 14' 8" Glide Right Standard	JM0048662
44	1/4" x 1-1/2" Self Tapping Screw	JM0001571