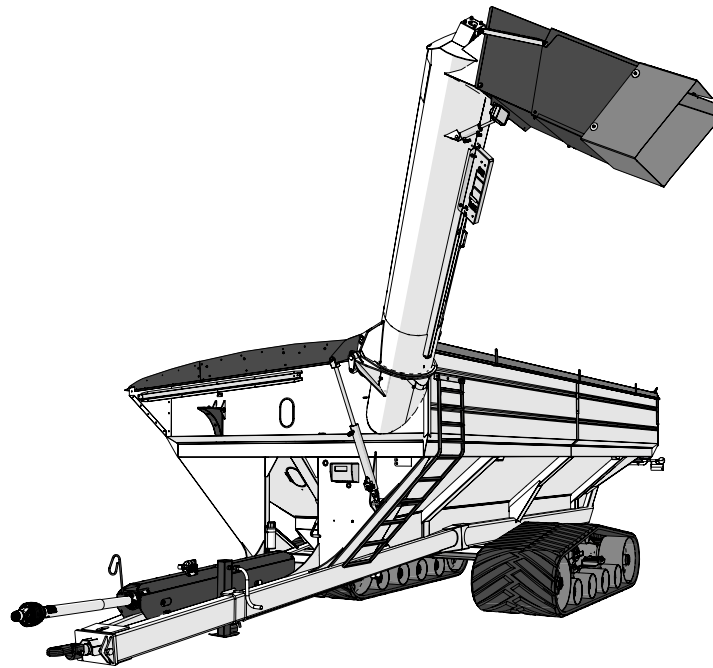




32 Series

GRAIN CART OPERATOR'S MANUAL

MODEL



Rev. 1.7.2022

J&M Manufacturing Co, Inc

284 Railroad Street - P.O. Box 547 | Fort Recovery, OH 45846 | Ph: (419) 375-2376 | Fax: (419) 375-2708

www.jm-inc.com

Stance

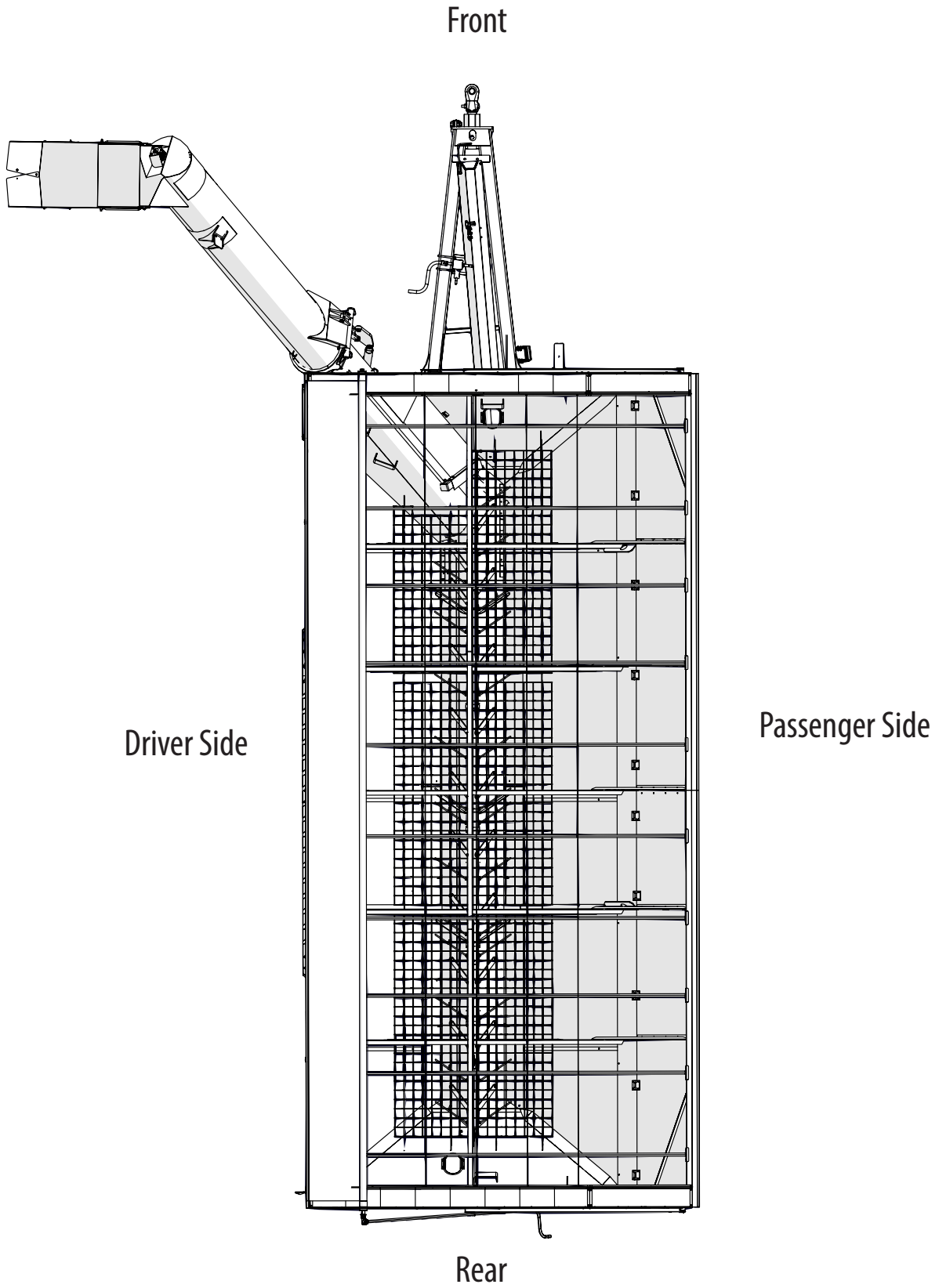


Table Of Contents

4 To The Dealer
5 General Information
6 Specifications
6 Dimensions
7 Bolt Torque Chart
7 Stud and Wheel Nut Torque Specifications
8 Decals
10 Safety Rules
11 Initial Operation and Maintenance
11 Operating Instructions
13 Removing Dirt From The Restrictors On The Hydraulic Cylinder
13 Troubleshooting
14 Lubrication Service Schedule
15 Routine Maintenance
16 Adjusting the Lower and Upper Flighting
17 Horizontal Auger Disconnect Instructions
17 Storage
Repair Parts List and Diagrams	
18 Weasler 30k Power Take-Off (PTO)
19 Hitch Assembly
20 3 Directional Gear Box
21 90 Degree Gear Box
22 90 Degree Shifter Gearbox
24 Driveline
26 Rear 90 Degree Gearboxes Mount
27 Clean Out Doors
28 Feed Gate
28 Track Mount
29 Lower Auger Assembly
30 Upper Auger Linkage
31 Upper Auger Assembly
31 Upper Auger Bearing Assembly
32 Spout Assembly
34 Hydraulic Hoses & Cylinders
36 Auto-Gate Shut-Off Hydraulics
38 Auto-Gate Shut-Off Assembly
38 Auto-Gate Shut-Off Wiring Schematic
39 Lights and Wiring
40 5-Point Scale System
42 Gate Indicator Display Assembly
43 Sideboards
44 Auger Rest Assembly
45 Ladder Assembly
45 Inspection Windows
46 Roll Tarp Assembly
48 Spring Return Assembly

To The Dealer

Read manual instructions and safety rules. Make sure all items on the Dealer's Pre-Delivery and Delivery Check Lists are completed before releasing equipment to the owner.

The dealer must complete the Warranty Registration found on the Dealer Portal website located at dealer.jm-inc.com and return it to J&M Mfg. Co., Inc. at the address indicated on the form. Warranty claims will be denied if the Warranty Registration has not been submitted.

EXPRESS WARRANTY:

J&M Mfg. Co., Inc. warrants against defects in construction or materials for a period of ONE year. We reserve the right to inspect and decide whether material or construction was faulty or whether abuse or accident voids our guarantee.

Warranty service must be performed by a dealer or service center authorized by J&M Mfg. Co., Inc. to sell and/or service the type of product involved, which will use only new or remanufactured parts or components furnished by J&M Mfg. Co., Inc. Warranty service will be performed without charge to the purchaser for parts or labor based on the Warranty Labor Times schedule. Under no circumstance will allowable labor times extend beyond the maximum hours indicated in the Warranty Labor Times schedule for each warranty procedure. The purchaser will be responsible, however, for any service call and/or transportation of the product to and from the dealer or service center's place of business, for any premium charged for overtime labor requested by the purchaser, and for any service and/or maintenance not directly related to any defect covered under the warranty. Costs associated with equipment rental, product down time, or product disposal are not warrantable and will not be accepted under any circumstance.

Each Warranty term begins on the date of product delivery to the purchaser. Under no circumstance will warranty be approved unless (i) the product warranty registration card has been properly completed and submitted to the equipment manufacturer, and (ii) a warranty authorization number has been issued by the equipment manufacturer. This Warranty is effective only if the warranty registration card is returned within 30 days of purchase.

This Warranty does not cover a component which fails, malfunctions or is damaged as a result of (i) improper modification or repair, (ii) accident, abuse or improper use, (iii) improper or insufficient maintenance, or (iv) normal wear or tear. This Warranty does not cover products that are previously owned and extends solely to the original purchaser of the product. Should the original purchaser sell or otherwise transfer this product to a third party, this Warranty does not transfer to the third party purchaser in any way. J&M Mfg. Co., Inc. makes no Warranty, express or implied, with respect to tires or other parts or accessories not manufactured by J&M Mfg. Co., Inc. Warranties for these items, if any, are provided separately by their respective manufacturers.

THIS WARRANTY IS EXPRESSLY IN LIEU OF ALL OTHER WARRANTIES OR CONDITIONS, EXPRESS, IMPLIED OR STATUTORY, INCLUDING ANY IMPLIED WARRANTY OF MERCHANTABILITY OR FITNESS FOR PARTICULAR PURPOSE.

In no event shall J&M Mfg. Co., Inc. be liable for special, direct, incidental or consequential damages of any kind. The exclusive remedy under this Warranty shall be repair or replacement of the defective component at J&M Mfg. Co., Inc.'s option. This is the entire agreement between J&M Mfg. Co., Inc. and the Owner about warranty and no J&M Mfg. Co., Inc. employee or dealer is authorized to make any additional warranty on behalf of J&M Mfg. Co., Inc.

The manufacturer reserves the right to make product design and material changes at any time without notice. They shall not incur any obligation or liability to incorporate such changes and improvements in products previously sold to any customer, nor shall they be obligated or liable for the replacement of previously sold products with products or parts incorporating such changes.

SERVICE:

The equipment you have purchased has been carefully manufactured to provide dependable and satisfactory use. Like all mechanical products, it will require cleaning and maintenance. Lubricate the unit as specified. Observe all safety information in this manual and safety signs on the equipment.

For service, your authorized J&M dealer has trained mechanics, genuine J&M service parts, and the necessary tools and equipment to handle all your needs.

Use only genuine J&M service parts. Substitute parts may void warranty and may not meet standards required for safety and satisfactory operation. Record the model number and serial number of your equipment in the spaces provided:

Model No: 1732 **Serial No:** _____ **Date of Purchase:** _____

Purchased From: _____

Provide this information to your dealer to obtain correct repair parts.

General Information

TO THE OWNER:

The purpose of this manual is to assist you in operating and maintaining your grain cart in a safe manner. Read it carefully. It furnishes information and instructions that will help you achieve years of dependable performance and help maintain safe operating conditions. If this machine is used by an employee or is loaned or rented, make certain that the operator(s), prior to operating:

1. Is instructed in safe and proper use.
2. Reviews and understands the manual(s) pertaining to this machine.

Throughout this manual, the term **IMPORTANT** is used to indicate that failure to observe can cause damage to equipment. The terms **CAUTION**, **WARNING** and **DANGER** are used in conjunction with the Safety-Alert Symbol (a triangle with an exclamation mark) to indicate the degree of hazard for items of personal safety. When you see this symbol, carefully read the message that follows and be alert to the possibility of personal injury or death.



This Safety-Alert symbol indicates a hazard and means
ATTENTION! BECOME ALERT! YOUR SAFETY IS INVOLVED!



DANGER

Indicates an imminently hazardous situation that, if not avoided, will result in death or serious injury.



WARNING

Indicates a potentially hazardous situation that, if not avoided, could result in death or serious injury, and includes hazards that are exposed when guards are removed.



CAUTION

Indicates a potentially hazardous situation that, if not avoided, may result in minor or moderate injury.

IMPORTANT

Indicates that failure to observe can cause damage to equipment.

NOTE

Indicates helpful information.

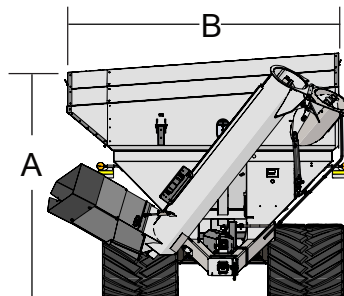
Specifications

Specifications Tracks	
Capacity	1,675 Bushels
Auger, One Vertical	22"
Auger, Horizontal	20"
Unload Rate	790+ bu/min
Pivot Shank (2)	7" Diameter
Tongue Weight	
Empty	2,600 lbs.
Loaded	6,000 lbs.
Compaction Rate	
Stabilizer Trax2 - 36"	13.7 lbs/sq inch
Stabilizer Trax2 - 46"	10.8 lbs/sq inch
Total Weight (approx.)	
STX-36	28,725 lbs.
STX-46	32,665 lbs.



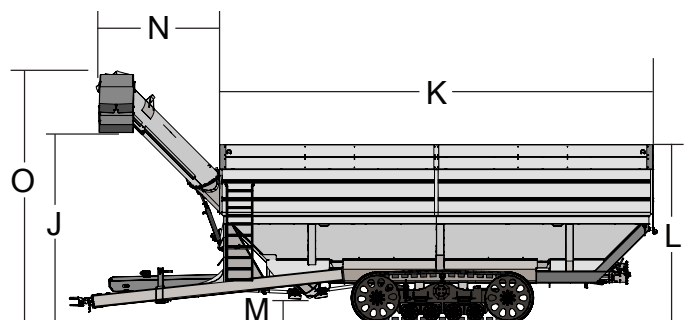
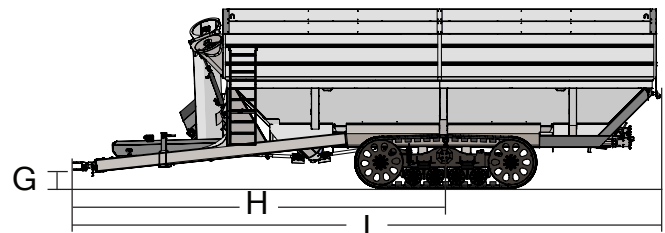
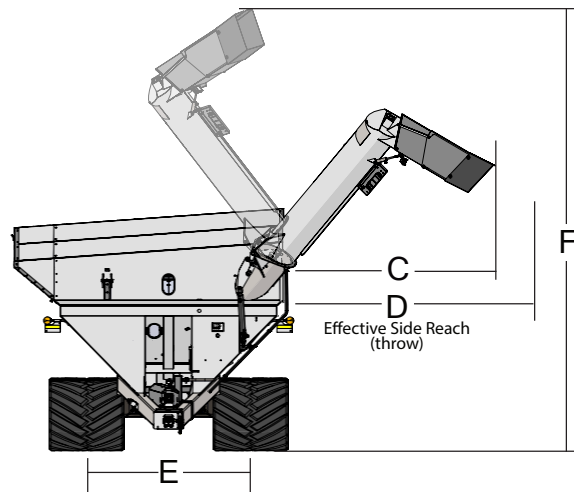
Required Tractor HP				
Driving Speed HP (Fully Loaded)			Unloading HP	
5 mph	10 mph	15 mph	Dry Corn (15%)	Wet Corn (27%)
165	363	560	309	423

Dimensions



X1732	
A	9'-9"
B	13'-9"
C	11'-0"
D	13'-8"
E	10'-2"
F	22'-1"
G	1'-8"
H	25'-7"
I	40'-2"
J	13'-6"
K	30'-0"
L	10'-9"
M	2'-0"
N	8'-6"
O	17'-7"

* Measured with scales and roll tarp installed and a 20" hitch height



Bolt Torque Chart

Always tighten hardware to these values unless a different torque or tightening procedure is listed for specific application. Fasteners must always be replaced with the same grade as specified in the manual parts list. Always use the proper tool for tightening hardware. Make sure fastener threads are clean and you start thread engagement properly. **Use these values when tightening all bolts and nuts with the exception of wheel nuts.**

SAE Fasteners

Coarse Thread Series				
	Grade 5		Grade 8	
<i>Diameter and Pitch (Inches)</i>	<i>Dry</i>	<i>Oiled</i>	<i>Dry</i>	<i>Oiled</i>
1/4"-20	8 ft-lbs	6 ft-lbs	12 ft-lbs	9 ft-lbs
5/16"-18	17	13	25	18
3/8"-16	31	23	44	33
7/16"-14	49	37	70	52
1/2"-13	75	57	106	80
9/16"-12	109	82	154	115
5/8"-11	150	113	212	159
3/4"-10	267	200	376	282
7/8"-9	429	322	606	455
1"-8	644	483	909	681
Fine Thread Series				
<i>Diameter and Pitch (Inches)</i>	<i>Dry</i>	<i>Oiled</i>	<i>Dry</i>	<i>Oiled</i>
1/4"-28	10 ft-lbs	7 ft-lbs	14 ft-lbs	10 ft-lbs
5/16"-24	19	15	27	20
3/8"-24	35	26	49	37
7/16"-20	55	41	78	58
1/2"-20	85	64	120	90
9/16"-18	121	91	171	128
5/8"-18	170	127	240	180
3/4"-16	297	223	420	315
7/8"-14	474	355	669	502

Stud and Wheel Nut Torque Specifications

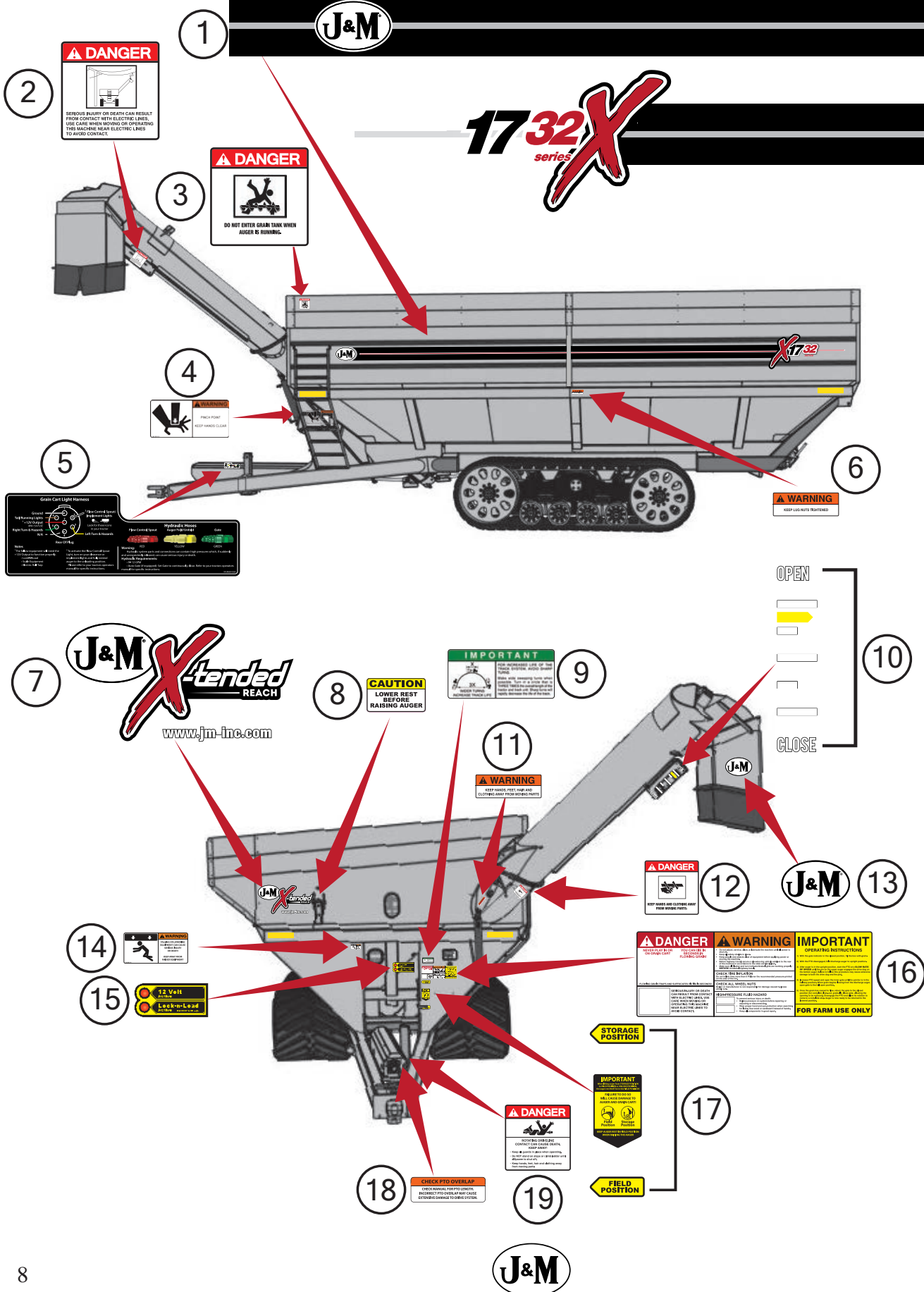
Always tighten hardware to these values unless a different torque or tightening procedure is listed for specific application. Fasteners must always be replaced with the same grade as specified in the manual parts list. Always use the proper tool for tightening hardware. Make sure fastener threads are clean and you start thread engagement properly. **Use these values when tightening all studs and wheel nuts.**

Stud	Tightening Torque
1/2"-20	120 ft-lbs
9/16"-18	170 ft-lbs
5/8"-18	300 ft-lbs
3/4"-16	400 ft-lbs
20mm	475 ft-lbs
22mm	640 ft-lbs

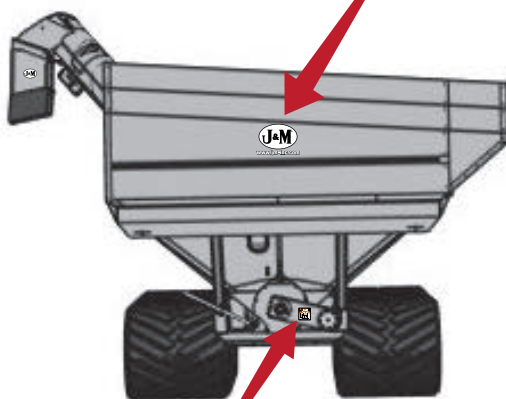
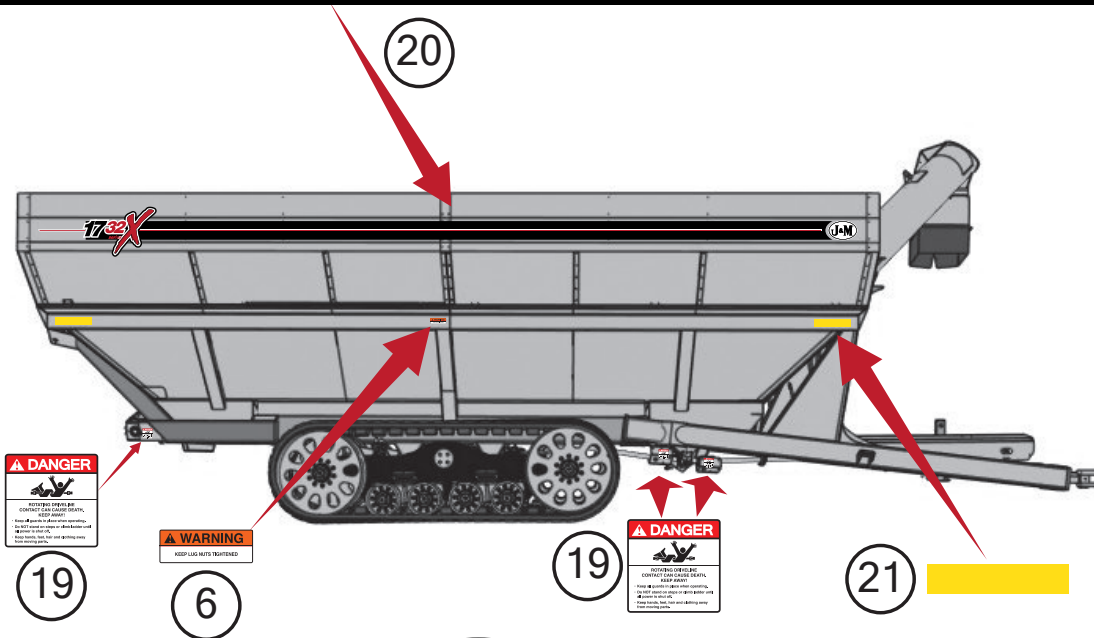
TIGHTENING WHEEL NUTS: Standard **3/4" wheel studs and nuts should be tightened to torque 400 ft-lbs.** During initial operation of the grain cart and then checked for proper torque after every 10 hours of use. Failure to do so may damage wheel nut seats. Once seats are damaged, it will become impossible to keep nuts tight.

Decals

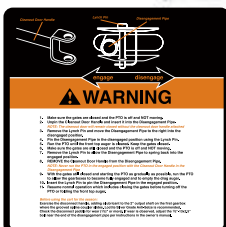
⚠ ATTENTION! BECOME ALERT! YOUR SAFETY IS INVOLVED! ⚠
Replace Immediately If Damaged or Missing



Decals



24



Description	Part No.
1 1732 Auger Side Stripe Kit	JM0044294
2 Danger, Electric Lines Decal	JM0015099
3 Danger, Do Not Enter Grain Tank Decal	JM0018033
4 Warning, Pinch Point Decal	JM0014994
5 X-Tended Reach Light Harness and Hydraulic Hoses Decal	JM0046492
6 Warning, Keep Lug Nuts Tightened Decal 1-5/8" x 4"	JM0010150
7 X-Tended Reach Logo w/ Oval and Website Decal 25" x 13"	JM0048321
8 Caution Lower Rest Decal	JM0037662
9 Important, 3x Wide Turns Tracks Decal	JM0021247
10 Open and Close Decal for 32 Series Indicator	JM0043138
11 Warning, Keep Hands Away Decal	JM0018039
12 Danger, Keep Hands and Clothing Away Decal	JM0018035
13 J&M Oval Decal (Medium) 5-1/2"x8-1/2"	JM0010179
14 Warning, Falling Or Lowering Decal	JM0014992
15 Lock and Load Indicator Lights Decal	JM0044289
16 Danger Warning Important Decal	JM0037665
17 Field Position/Storage Position Decal	JM0037661
18 Check PTO Overlap Decal	JM0025435
19 Danger, Rotating Driveline Decal	JM0018036
20 1732 Opposite Auger Side Stripe Kit	JM0044295
21 Amber Reflective Decal (2" x 9") (RD-1A)	JM0009946
22 J&M Oval Decal (Large) 9-1/2" x 15"	JM0015151
23 www.jm-inc.com Decal	JM0019239
24 Drag Auger Disengage Instructions Decal	JM0048320



Safety Rules

ATTENTION! BECOME ALERT! YOUR SAFETY IS INVOLVED!

Safety is a primary concern in the design and manufacture of our products. Unfortunately, our efforts to provide safe equipment can be erased by an operator's single careless act. In addition, hazard control and accident prevention are dependent upon the awareness, concern, judgment, and proper training of personnel involved in the operation, transport, maintenance and storage of equipment.

Make certain that the operator(s), prior to operating is instructed in safe and proper use and reviews and understands the manual(s) pertaining to this machine. Also make certain that the operator(s) reviews and understands the operator's manual of the tractor prior to hooking up or operating the grain cart.

Read this manual before you operate this machine. If you do not understand any part of this manual, or need more information, contact the manufacturer or your authorized dealer.

SAFETY

Understand that your safety and the safety of other persons is measured by how you service and operate this machine. Know the positions and functions of all controls before you try to operate them. Make sure to check all controls in a safe area before starting your work.

The safety information given in this manual does not replace safety codes, federal, state or local laws. Make certain your machine has the proper equipment as designated by local laws and regulations.

A frequent cause of personal injury or death is from persons falling off equipment and being run over. Do not permit persons to ride on this machine.

Travel speeds should be such that complete control and machine stability is always maintained. Where possible, avoid operating near ditches, embankments and holes. Reduce speed when turning, crossing slopes and rough, slick or muddy surfaces.

Collision of high speed road traffic and slow moving machines can cause personal injury or death. On roads, use flasher lights according to local laws. Keep slow-moving-vehicle emblem visible. Pull over to let faster traffic pass.

Hydraulic oil leaking under pressure can penetrate skin and cause infection or other injury. To prevent personal injury,

- Relieve all pressure before disconnecting fluid lines.
- Before applying pressure, make sure all connections are tight and components are in good condition.
- Never use your hand to check for suspected leaks under pressure. Use a piece of cardboard or wood for this purpose.
- If injured by leaking fluid, see your doctor immediately.

When transporting the grain cart, always keep the auger in the stow position.

Use care when moving or operating the grain cart near electric lines as serious injury or death can result from contact.

Never adjust, service, clean, or lubricate the grain cart until all power is shut off. Keep all safety shields in place. Keep hands, feet, hair and clothing away from moving parts while the grain cart is in operation.

The service ladder is for service work only. If you must climb into the grain tank, be certain that all power is shut off and then use extreme caution when climbing into the grain cart.

Make sure that everyone is clear of equipment before applying power or moving the machine.

Make sure that the grain cart is fastened securely to the tractor by using a high strength hitch pin, clip and safety chains. Make sure that the grain cart hitch properly matches the hitch type of the tractor. Use a single prong (spade) grain cart hitch with a double prong (clevis) tractor hitch. Use a double prong (clevis) grain cart hitch with a single prong (spade) tractor hitch. Be sure the tractor pin is at least 1/4" smaller in diameter than the pin hole in the grain cart hitch to ensure enough free movement when traversing through uneven terrain.

Before filling the grain cart, make certain that no one is inside the grain tank. Never allow children or anyone in, near, or on the grain cart during transport or during loading and unloading of grain. Be aware that moving grain is dangerous and can cause entrapment, resulting in severe injury or death by suffocation.

Never operate the auger system with anyone inside the grain tank. Hands, feet, hair and clothing can fit through the openings in and around the grate. Contact with the auger can cause severe injury or death. Make certain that all power is shut off before service work is performed.

Before unhooking the grain cart from the tractor, be sure the jack stand is properly mounted and in place and the wheels are properly blocked to prevent the cart from moving.

Initial Operation and Maintenance

⚠ WARNING

BE CERTAIN THAT ALL POWER IS SHUT OFF BEFORE SERVICING THE GRAIN CART.

Before the grain cart is put into service:

- Have the safety instructions been read and clearly understood by the operator(s) of this machine?
- Has the gearbox been properly filled with SAE 80W-90 gearbox lubricant?
- Have all nuts, bolts, bearings and braces been properly fastened?
- Has the PTO been checked for proper overlap?

CHECK PTO OVERLAP LENGTH: Overlap length may vary depending on the tractor model and hitch setting. Try to obtain the greatest possible overlap without bottoming out in the extreme operating conditions. Too much overlap may cause the PTO to bottom out and damage the driveline. Not enough overlap may cause the PTO front and back halves to separate. From the fully compressed (shortest) length the PTO should be telescoped (extended) between 10" and 22". Different PTO lengths may need to be purchased to accommodate your terrain. A 4" shorter or a 10" longer PTO can be ordered through your dealer from J&M Manufacturing.

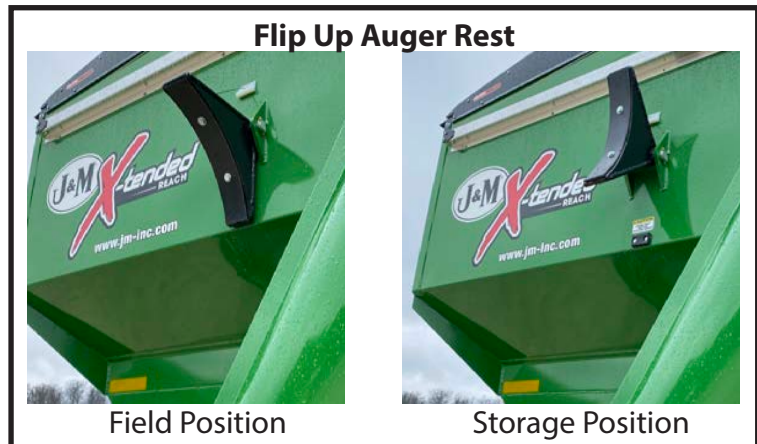
FOLDING AND UNFOLDING THE AUGER: X-Tended Reach grain carts offer three positions for the auger, depending on your use:

- Storage - For when the grain cart is stationary and not in use.
- Field - For when using the grain cart in the field. The auger must be elevated in the field to avoid ground interference and kicking soil into the tip spout.
- Unload - For when the auger is in use. To maximize the life of the grain cart, return the auger to field position between unloading.

To unfold the auger from the storage position, keep the throw handle in field position and unfold the auger.

To use in field position, move the auger above the flip-up auger rest (the throw handle will remain in field position) and lower the auger onto the rest. The auger rest prevents the auger from moving into storage position as it unfolds.

To return to the storage position, unfold the auger, lift the auger above the rest, move the throw handle and flip auger rest to the storage position, and fold the auger completely. The auger rest will automatically move to field position through this pass.



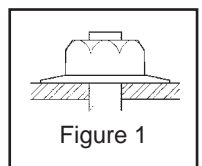
GREASE BEARINGS: Are all bearings on the drive line properly greased? Are all set screws in the bearings and U-joints tight? Has the power-take-off shaft been properly greased at all points including the cross bearings? Has the universal joint at the gearbox been greased? Have all grease points at the auger hinge area, including the hanger bushing assembly been greased?

Operating Instructions

VERY IMPORTANT: Under no circumstance is it recommended to tow a loaded grain cart in excess of 8 mph.

WHEEL NUTS: Are the wheel nuts properly fastened? **Torque to 400 Ft.-Lbs. for 3/4" wheel studs and nuts. Wheel studs and nuts should be checked after each load during initial operation of the cart and then after every 10 hours of use. Failure to do so may damage wheel studs and nuts.** To ensure that wheel nuts do not loosen, it may be helpful to mark the location of one side of the nut and wheel rim with paint. This will help when observing if any rotation of the nut occurs. Once the seats are damaged, it will become impossible to keep the lug nuts tight.

The drawing shows the proper way to mount the wheels using Budd-type nuts. The track wheels supplied with your grain cart have straight holes and the Budd nuts will be mounted according to Figure 1. Track wheels that are improperly installed on the grain cart, resulting in product failure, will nullify warranty and shift the burden of liability to the owner/operator. **We recommend you inspect your wheel nuts to make sure they are properly installed. Also, check the wheel nuts on a regular basis to ensure they are tight.**



Operating Instructions

LIGHTING AND SAFETY DECALS: Are the rear, amber extremity lights properly positioned? Extend the lights within 16" (40,6cm) of the left and right extremities of the grain cart. Is an SMV Emblem attached to the rear of the grain cart?

Are the lights working properly? Are all lights and reflective decals clean, visible and properly placed?

BE CERTAIN THAT ALL POWER IS SHUT OFF WHEN HOOKING UP TO TRACTOR OR CONNECTING HYDRAULIC LINES TO TRACTOR.

Tractor requirements for proper towing: Model 1732 grain carts require 400+HP 4WD Tractor.

⚠ IMPORTANT: Do NOT pull a loaded grain cart on highway. For incidental highway travel, observe the section below.

TOW LOADS SAFELY: Observe these recommended maximum road speeds, or local speed limits which may be lower:

- **Grain cart empty:** Do not travel more than 20 mph (32 km/hr) and do not tow loads more than 1.5 times the pulling unit's weight.
- **Grain cart loaded:** Do not travel more than 8 mph (12 km/hr) and do not tow loads more than 1.5 times the pulling unit's weight.

Stopping distance increases with speed and weight of towed loads and on slopes. Towed loads with or without brakes that are too heavy for the tractor or are towed too fast can cause loss of control. Consider the total weight of the equipment and its load. Ensure the load does not exceed the recommended weight ratio. Use additional caution when towing loads under adverse surface conditions, when turning, and on inclines.

WARNING: For greater stability on uneven or steep terrain, position non-scale wheel spindles at the furthest out setting.

⚠ IMPORTANT:

1. Connect grain cart hitch to tractor drawbar using a good quality hitch pin. Attach the safety chain to the tractor and through one chain loop provided on either side of the grain cart frame as shown. Make sure the grain cart hitch properly matches the hitch of the tractor. Use a single prong (spade) grain cart hitch with a tractor double prong (clevis) hitch. Use a double prong (clevis) grain cart hitch with a single prong (spade) tractor hitch.



Safety Chain User Instruction

- a) Secure the safety chain by running the 1-1/4"-7 x 4" Gr8 Z Hex Bolt through the holes on the tabs on the front of the grain cart and the large end link on the safety chain. Secure the bolt with the 1-1/4"-7 Gr5 Z Nylon Locking Hex Jam Nut. Connect the chain around the towing machine's attaching bar (pictured to the left).
- b) Do not allow any more slack than necessary for articulation.
- c) Do not use any intermediate support as the attaching point.
- d) Store the safety chain by securing it around the main axle A-frame of the grain cart.
- e) Replace the safety chain if one or more links or end fittings are broken, stretched or otherwise damaged or deformed.

2. Attach the power-take-off shaft to the tractor. The PTO must have at least 10" of engagement. Check tractor drawbar for clearance and length and adjust if necessary. **Make sure the PTO does not bottom out when making sharp turns as it may bend the drive shaft.** Check for adequate clearance between telescoping PTO and tractor hitch. Suggested clearance is 7 inches.
3. Make sure the jack stand is repositioned from the lower support position before the cart is moved. **Never use the jack to support a loaded grain cart.**
4. Be sure that no debris or foreign objects are in the grain cart.
5. Attach the hydraulic lines to the tractor. Two hydraulic lines (green band) operate the inside gate mechanism. Connect these lines to one service outlet on the tractor. Two hydraulic lines (yellow band) operate the folding mechanism of the auger. Connect these lines to a second service outlet on the tractor. The remaining two hydraulic lines (red band) operate the hydraulic flow control spout located at the end of the upper auger. Connect these lines to a third service outlet on the tractor. Make sure the air is bled from the hydraulic cylinders and hoses.
6. Run the auger system EMPTY before loading grain into the tank for actual use. Make certain that the upper, lower, and horizontal augers are properly engaged.
7. Connect the lighting 7-prong connector end on the main wiring harness to the tractor electrical outlet. Make sure that all flasher and turn indicator lights are working properly before incidental highway travel.

⚠ CAUTION

- Do NOT operate the grain cart before reading and understanding the Operator's Manual and ALL danger, warning and caution signs.
- Be sure that a Slow-Moving-Vehicle emblem is attached to the rear of the grain cart.
- Never exceed 1,000 rpm on the PTO and driveline system.
- Never fold or extend the auger until the PTO has come to a complete stop.
- Never fill the grain cart unless the gate indicator is in the closed position.
- Never allow foreign object (shovels, etc.) to be placed inside the grain cart.
- Never engage the lugs and drive dogs on the augers when the system is moving at a high rate of speed.
- Never perform maintenance work or service the grain cart with the tractor running.
- When loading the dual auger grain cart start loading in the center of the cart to evenly distribute the weight.

Troubleshooting

WARNING

MAKE SURE THAT ALL POWER IS SHUT OFF BEFORE SERVICING THE GRAIN CART. MAINTENANCE AND REPAIR SERVICE WORK TO BE PERFORMED BY QUALIFIED SERVICE PERSONNEL ONLY.

Trouble	Possible Cause	Possible Remedy
Auger will not return to down position or move from stow position	Faulty check valve	Replace check valve
	Faulty lock and load solenoid	Disconnect power to lock and load. If the auger can move, the lock and load solenoid needs to be replaced.
	Upper flighting and lower flighting are locked together	Bearing on top of upper auger flighting needs adjusting. When the auger is in the engaged position, there must be 1/8" (0,32cm) gap between bottom of top bearing and top of upper tube housing (See "Adjusting the Lower and Upper Flighting" on page 16).
	Feed gate open	Close the feed gate.
	Lock and Load not operating correctly	Make sure the limit switch on the feed gate indicator assembly is functioning properly.
Hanger bushing assembly at the top of the lower auger flighting is hot	Top of the hanger bushing assembly is rubbing against the drive dog	Loosen the two bolts and re-adjust the position of the hanger bushing assembly. Re-tighten bolts.
		Remove the lower flighting assembly and place a shim between the spline coupler and the gearbox.
Excessive vibration	Auger flighting or shaft is bent	Straighten or replace auger flighting.
	Drive shaft is bent	Replace or straighten drive shaft.
Grain flow stoppage	Bolt sheared in drive dog	Replace bolt in drive dog. Engage upper and lower flighting at a slow rate of speed. (Drive dogs and lugs are being engaged too fast).
	Folding auger before complete stop	Upper and lower flightings are disengaging before auger comes to a complete stop. Replace bolt in the drive dog. Never engage or disengage the upper and lower flightings until the augers come to a complete stop.
	PTO key sheared	Replace key and tighten set screw.
	Rear auger disconnect disengaged	Engage rear auger disconnect.
Auger tube is breaking away from the grain cart at the hinge area or the ram in the hydraulic folding cylinder is bent	Upper auger is extended in the upright position while traveling in the field	Repair or place folding cylinder if necessary. Remember to lower auger to the field position after unloading.
Flip-up auger rest not flipping over center	Cable has loosened	With auger in field position, tighten cable to the handle.
Feed gate indicator not moving	Debris lodged in feed gate	Make sure indicator slider moves freely and feed gate is clear of debris.
Clutch disconnecting	Auto-clutch torque exceeded	Operate rear auger disconnect.

Removing Dirt From The Restrictors On The Hydraulic Cylinder

WARNING

MAKE SURE THAT ALL POWER IS SHUT OFF AND THE UPPER AUGER TUBE IS IN THE DOWN POSITION BEFORE REMOVING THE RESTRICTORS

Remove restrictors from the 90 degree elbow on the tip spout hydraulic cylinder. Remove dirt from the fitting to allow hydraulic oil to flow through the restrictor. Reattach the restrictor to the elbow. Use Teflon sealant tape or equivalent on the threads of the restrictor before reattaching.

If the restrictor continues to plug with dirt, replace the restrictor or filter the hydraulic oil in your system.

Lubrication Service Schedule

⚠ WARNING: BE CERTAIN THAT ALL POWER IS SHUT OFF BEFORE SERVICING THE GRAIN CART

90 DEGREE REAR GEARBOXES: Gearbox lubricant has been added to the gearboxes during final assembly. Recheck the lubricant level before initial operation of the grain cart, then periodically according to use. For the gearbox on the left while looking at the rear of the cart, the fluid level should be between the bottom and halfway point of the 2" output shaft that bisects the gearbox. The recommended fluid level range is pictured in Figure 1 and Figure 2 below. The minimum level is pictured in green and the maximum level is pictured in red. A pressure relief plug is in the center of the top of the gearbox mount plate. To check the fluid level, remove the vented inspection plug and view the fluid level from above. When filled to the maximum level (shown in red), the gearbox should have 80 ounces of SAE 80W-90 lubricant. Change the oil annually before use.

For the gearbox on the right while looking from the rear of the cart, the fluid level should rest at the inspection plug, pictured in red in Figure 3 below. When filled to the proper level, the gearbox should have 80 ounces of SAE 80W-90 lubricant. Change the oil annually before use.

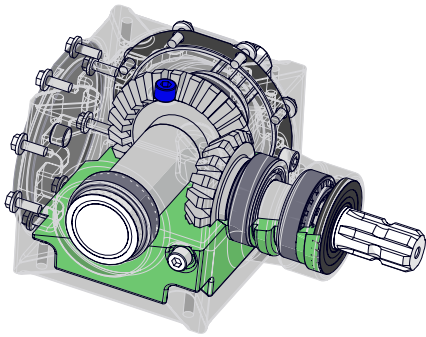


Figure 1

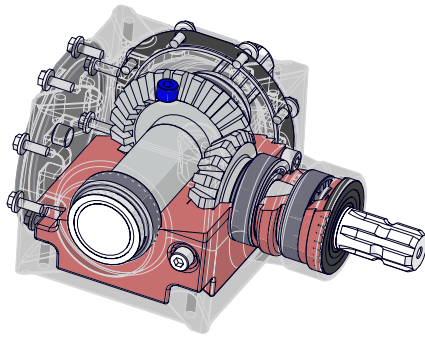


Figure 2

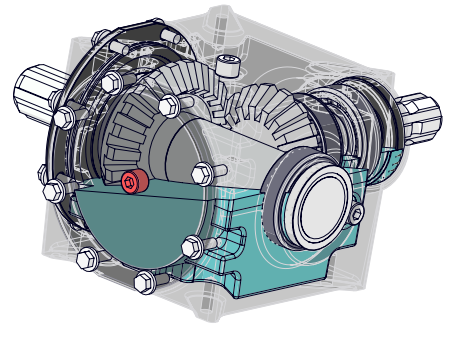


Figure 3

3-WAY FRONT GEARBOX: Gearbox lubricant has been added to the gearbox during final assembly. Recheck the lubricant level before initial operation of the grain cart, then periodically according to use. The fluid level should rest at the inspection plug, pictured in blue in Figure 4 below. When filled to the proper level, the gearbox should have 96 ounces of SAE 80W-90 lubricant. Change the oil annually before use.

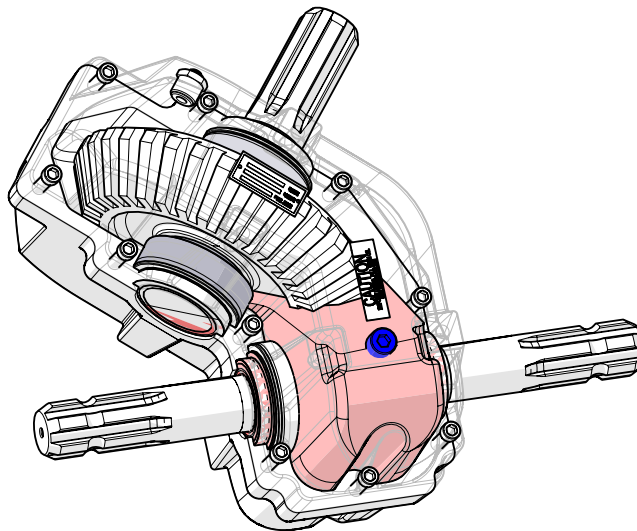


Figure 4

REAR DISCONNECT GROOVED SPLINE COUPLER: Exercise the disconnect handle, adding a lubricant to the 2" output shaft on the first gearbox where the grooved spline coupler slides. Loctite Silver Grade Anti-Seize is recommended. Perform this maintenance annually.

Lubrication Service Schedule

IMPORTANT: Your grain cart has grease fittings at all critical points. The following grease fittings should be serviced before the grain cart is put into operation:

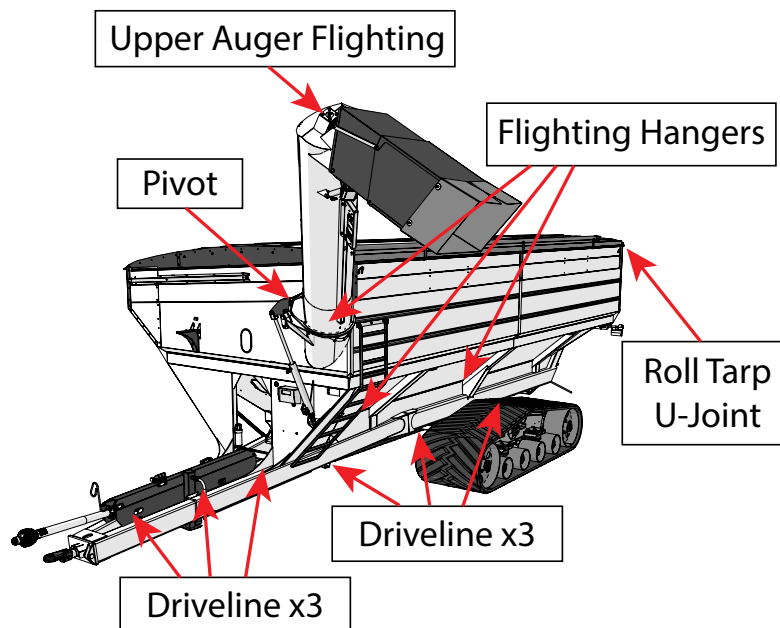
PTO & DRIVELINE: The grease fittings on the PTO should be serviced after every 8 hours of use. Service the grease fittings on each of the drive bearings and the universal joints after every 8 hours of use.

AUGER ASSEMBLY: One grease fitting is located on the pivot pin of the folding auger. This fitting should be serviced after every 8 hours of use. Service the grease fitting on the hanger bushing assembly (top end of the lower auger assembly) as well as the horizontal auger hangers after every 8 hours of use or as needed.

SPRING LOADED UPPER AUGER BEARING: Service the grease fitting on the upper auger bearing (1 pump) (located at the top end of the upper auger assembly) after every 8 hours of use. Lubricate the springs and retaining bolts on the bearing before prolonged storage of the grain cart.

ROLL TARP U-JOINT: Service the grease fitting on the U-Joint of the roll tarp crank handle once annually.

Grease Fittings	
Pivot Pin	Once Annually
Roll Tarp U-Joint	Once Annually
Upper Auger Flighting	Every 8 hours of PTO run time (roughly 150 semi loads)
Driveline	Every 8 hours of PTO run time (roughly 150 semi loads)
Horizontal and Vertical Flighting Hangers	Every 8 hours of PTO run time (roughly 150 semi loads)



Routine Maintenance

⚠ WARNING: BE CERTAIN ALL POWER IS SHUT OFF WHEN SERVICING THE GRAIN CART

- Check the grain cart periodically for cracks in welds and for other structural damage. Have cracked welds fixed immediately. Failure to do so could result in extensive damage to the grain cart and greatly reduce the life of the cart.
- Exercise horizontal and vertical clean out doors. Lubricate hinge points if necessary.
- Check all hydraulic hoses for wear and replace as necessary.
- Make sure that all guards and shields are in place before operating the grain cart.

Adjusting the Lower and Upper Flighting

⚠ WARNING

MAKE SURE ALL POWER IS SHUT OFF BEFORE ADJUSTING THE FLIGHTING ASSEMBLY.

LOWER FLIGHTING - If the drive dog and hanger assembly are becoming excessively hot during unloading, the lower flighting and/or hanger may need adjusting. The hanger bushing assembly has elongated holes where it attaches to the outer tube assembly. Loosen the two 1/2" bolts on the hanger bushing assembly. Adjust the hanger either up or down and vertically center it between the flighting and drive dog. Re-tighten the bolts. Make certain that the flighting center and drive dogs do not rub the hanger bushing assembly, causing them to become hot.

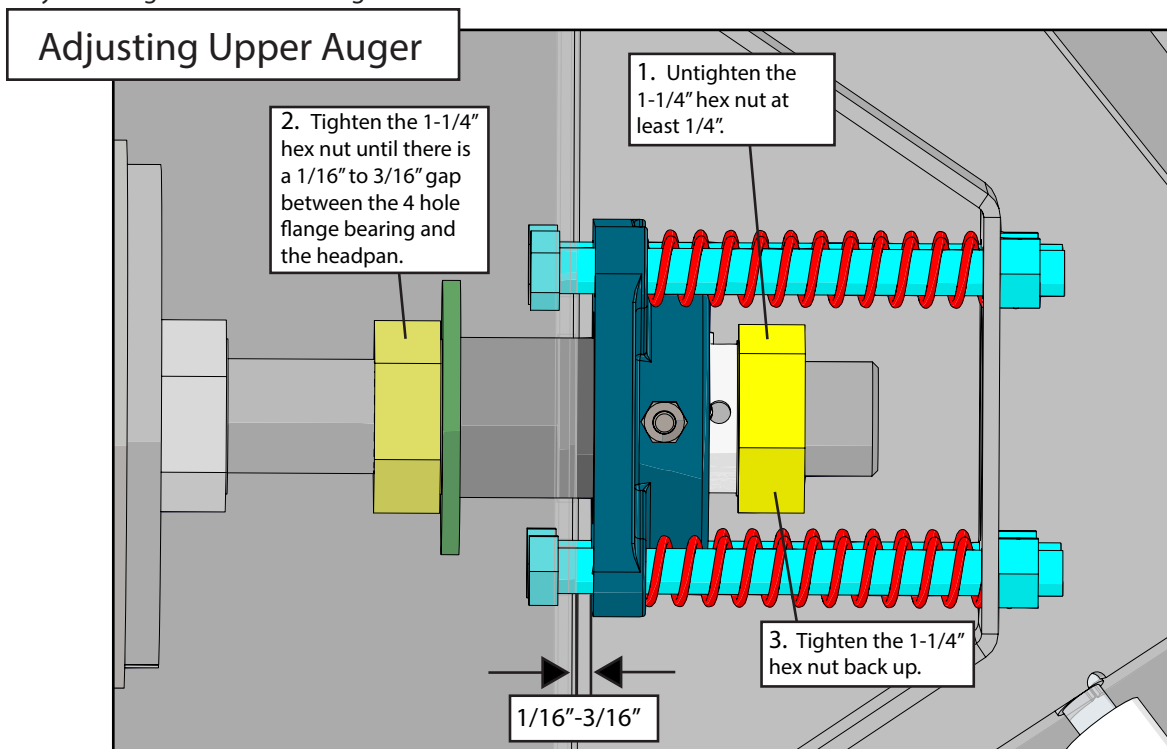
If the hanger can no longer be adjusted by moving it up or down on the elongated holes, both the hanger bushing assembly and the lower flighting will have to be removed. After removing them from the tube assembly, place a shim [between 1/8" (0,32cm) to 3/16" (0,48cm) thick] where the gearbox and the spline coupler (welded to the lower flighting). Replace the lower flighting and reattach the hanger to the tube assembly. Readjust the hanger assembly. NOTE: The bottom of the lower flighting is not attached to the gearbox with any bolts or set screws but may be 'frozen' fast. Be careful when removing the lower flighting from the gearbox. For easier removal of the lower flighting, keep the gearbox at the bottom intact, remove the two 1/2" bolts from the hanger bushing assembly and pull the lower flighting off the gearbox.

After adjusting the lower flighting, move the upper auger to the unload position and check the upper flighting for readjustment.

UPPER FLIGHTING - If the upper and lower augers do not properly separate during the unfolding sequence, the upper flighting may need adjusting. Before making adjustment to the upper flighting, check to see if the lugs and drive dogs on the auger assemblies are locking together. If they are not locked together, check to see if a faulty check valve on the hydraulic cylinder used to raise and lower the upper auger assembly may be causing the problem.

Fold the upper tube assembly into the upright position. Position the upper flighting in the engaged position with the lower flighting. Locate the four-hole flange bearing on the top of the upper auger tube housing. With the upper flighting in the engaged position, check the spacing between the upper bearing and the upper tube housing. There must be an 1/8" (0,32cm) space between the base of the four-hole flange bearing and the upper tube housing. If there is NOT a space between the bearing and the upper tube housing, or if there is more than 1/8" (0,32cm) space, the upper flighting will need to be adjusted. To adjust the upper flighting, loosen the 1-1/4" hex nuts both above and below the four-hole flange bearing. Move the 1-1/4" hex nuts up or down the threaded shaft on the top of the auger flighting shaft until the bearing moves to approximately 1/8" (0,32cm) above the base of the upper tube housing. When the four-hole flange bearing is properly located, tighten both 1-1/4" hex nuts together to secure the bearing position.

If the upper and lower flighting still does not separate properly during the folding sequence, a small bevel may need to be removed from the inside of the lugs where they engage the drive dogs on the auger assemblies. Grind approximately 1/8" (0,32cm) from the corner of the lugs where they touch against the drive dogs.



Horizontal Auger Disconnect Instructions

In the event the PTO clutch has insufficient torque to clean out the horizontal and vertical augers, follow these instructions to disengage the horizontal auger, clean out the vertical auger, and then reengage and clean out the horizontal auger.

1. Close the feed gates and ensure the PTO is off and not moving.
2. Lift the shifter gearbox handle upward to disengage the horizontal auger. Adding a small amount of grease to the locking plate in contact with the handle can ease the force required to engage/disengage the gearbox.
3. Slowly turn on the PTO. After the vertical auger is emptied, turn the PTO off again.
4. With the PTO off and not moving, push the shifter gearbox handle downward to reengage the horizontal auger. To ensure the gears in the gearbox are fully engaged, momentarily turn the PTO on and then back off so that the PTO shaft rotates slightly. This slight rotation will allow the shifter gearbox gears to fully engage if they were not engaged previously.
5. Slowly turn on the PTO and empty the horizontal auger.
6. Resume normal operation of the grain cart.

Storage

IMPORTANT: When the grain cart is not in use, store the cart in a dry, protected place. Leaving your grain cart outside, open to the weather will shorten its life.

Procedure for Storage Preparation

1. Cover electronic monitor (if equipped) with plastic before washing the grain cart. Wash or clean and completely lubricate the grain cart. See "Lubrication Service Schedule" on page 14.
2. Remove all grain from inside the grain tank, auger tube assemblies, and at the clean-out door.
3. Check the gearbox oil and replace with new SAE 80W-90 gearbox lubricant or equivalent if necessary.
4. Touch up areas where paint may have worn away. Use a good quality primer paint, especially before re-applying graphite paint to the interior slopes of the grain tank.
5. Retract all hydraulic cylinders to prevent the piston rods from rusting.
6. Open the clean-out doors at the base of the grain tank.

Removing from Storage

1. Check the gearboxes to make sure they have the appropriate amount of oil.
2. Close the clean out doors at the base of the grain tank.
3. Make sure all safety shields are in the proper position.



Repair Parts List and Diagrams

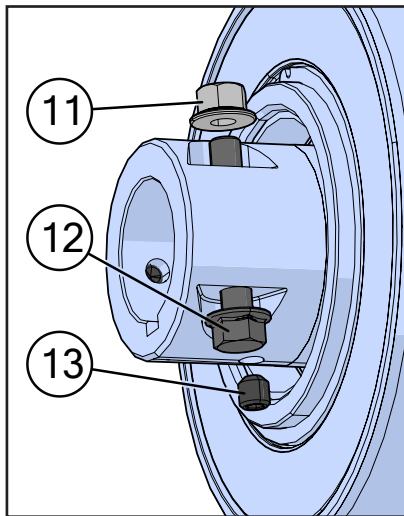
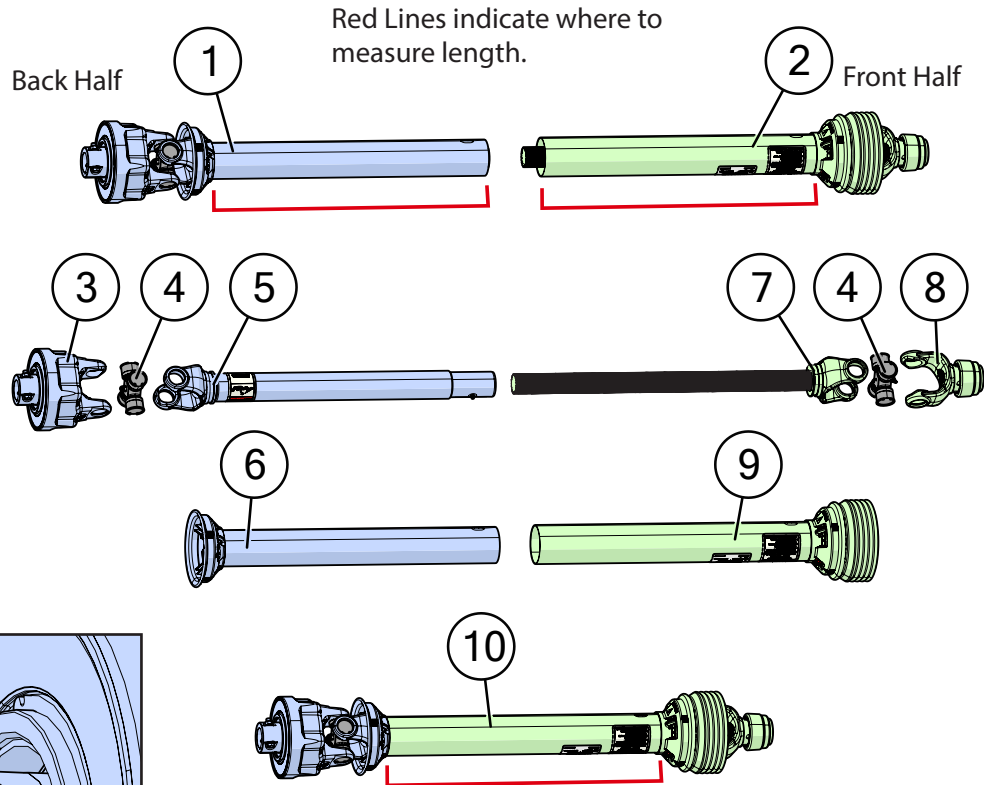
When performing maintenance work, wear sturdy, rough-soled work shoes and protective equipment for eyes, hair, hands, hearing and head. Follow the Operator's Manual instructions to ensure safe and proper maintenance and repair.

Your local, authorized dealer can supply genuine replacement parts. Substitute parts may not meet original equipment specifications and may be dangerous.

⚠ WARNING

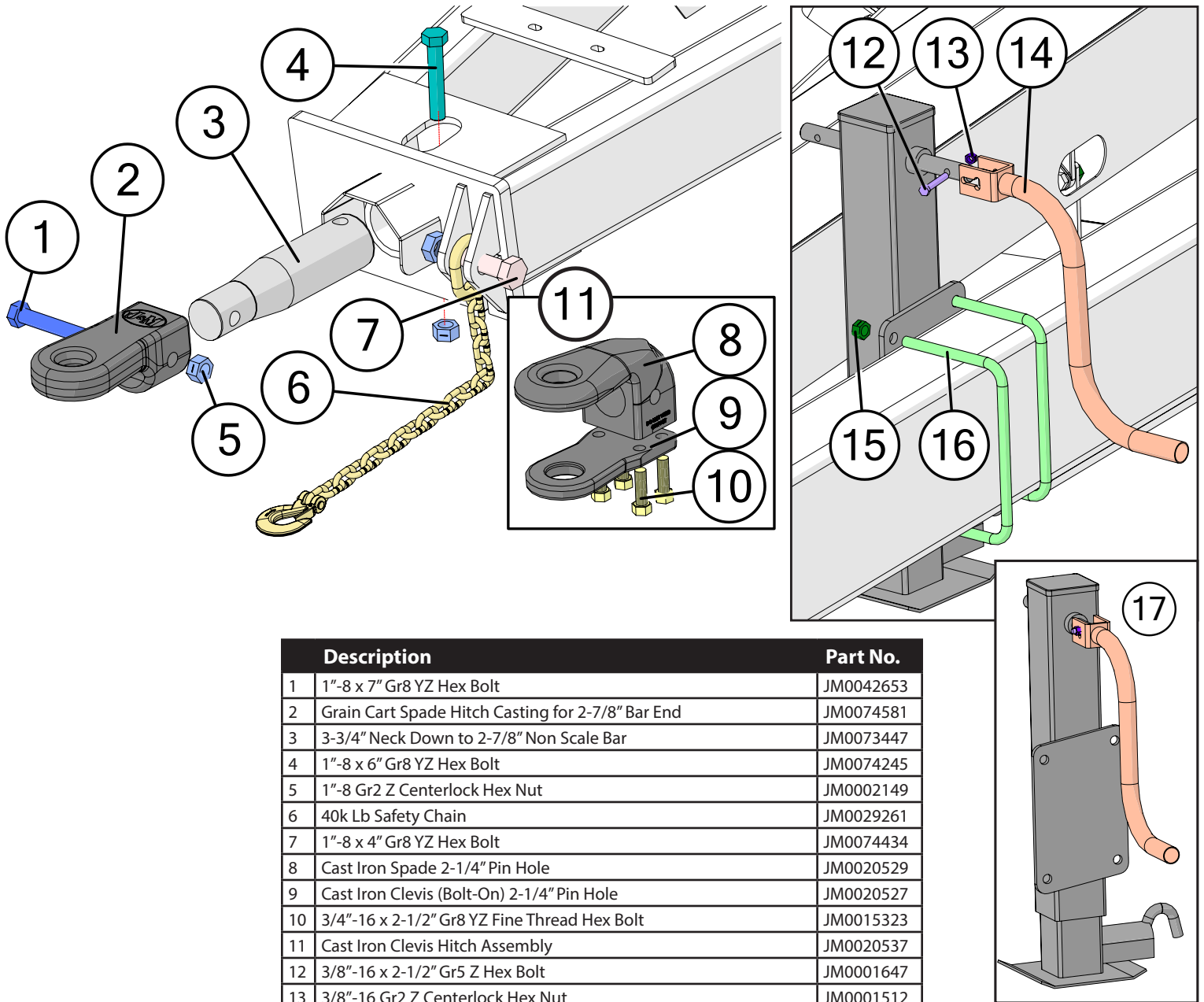
MAKE SURE ALL POWER IS SHUT OFF BEFORE PERFORMING ANY MAINTENANCE OR REPAIR WORK.

Weasler 30k Power Take-Off (PTO)



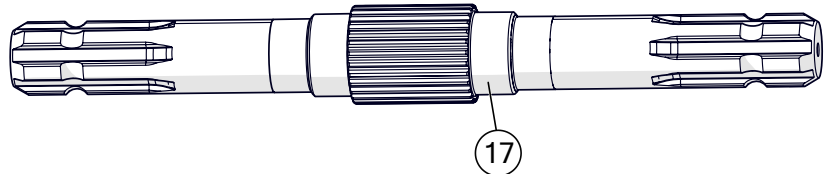
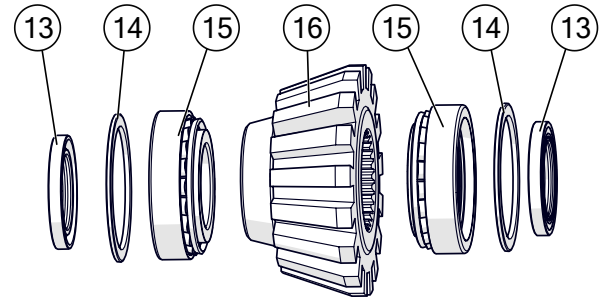
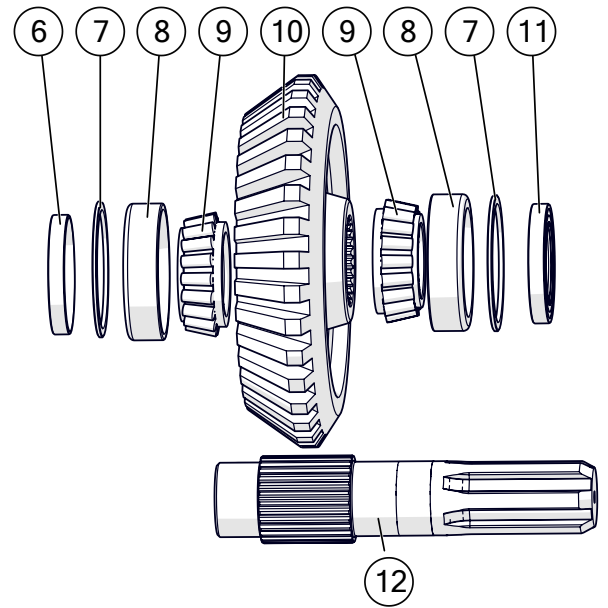
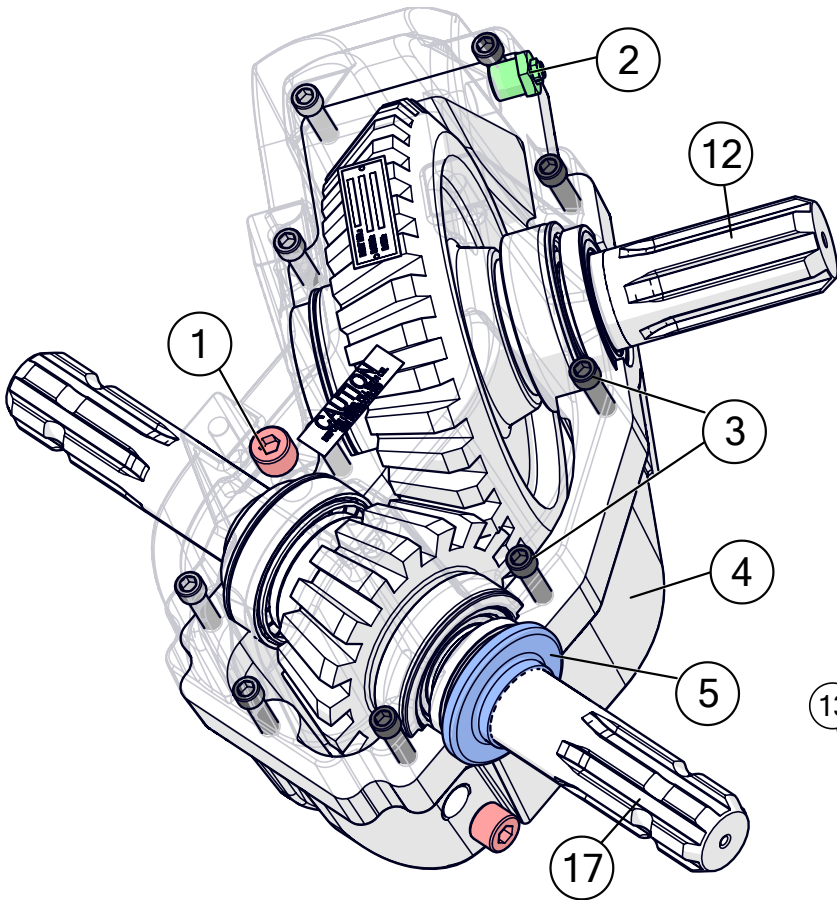
Description	Part No.
1 Back Half Weasler PTO 30k (25-1/4")	JM0061874
1 Back Half Weasler PTO 30k XL (31-3/4")	JM0061885
2 Front Half Weasler PTO 30k (25")	JM0061876
2 Front Half Weasler PTO 30k XL (30-1/4")	JM0061887
3 Auto Clutch for 30k Weasler	JM0061884
4 55E Cross Kit (Auto Clutch PTO)	JM0018449
5 Yoke, Tube & Sleeve (30k Weasler) (55E)	JM0061883
5 Yoke, Tube & Sleeve (30k Weasler XL)	JM0061892
6 30k Weasler Auto Clutch Back Guard (25-1/4")	JM0061881
6 30k Weasler XL Auto Clutch Back Guard (31-3/4")	JM0061891
7 Yoke & Shaft Assembly (30k Weasler) (55E)	JM0061880
7 Yoke & Shaft Assembly (30k Weasler XL)	JM0061890
8 Spring Lock Yoke (1-3/4" PTO) (Weasler)	JM0018506
9 30k Weasler Front Guard (25")	JM0061879
9 30k Weasler XL Front Guard (30-1/4")	JM0061889
10 Complete 1-3/4" Weasler 30k PTO 25"	JM0061908
10 Complete 1-3/4" Weasler 30k PTO (XL) 31-1/2"	JM0061909
11 Lock Nut 3/8-16(55E PTO)	JM0054592
12 3/8"-16 x 2-1/4" Hex Bolt (55E PTO)	JM0054591
13 Set Screw 3/8"-16 x .38"	JM0018465

Hitch Assembly



Description	Part No.
1 1"-8 x 7" Gr8 YZ Hex Bolt	JM0042653
2 Grain Cart Spade Hitch Casting for 2-7/8" Bar End	JM0074581
3 3-3/4" Neck Down to 2-7/8" Non Scale Bar	JM0073447
4 1"-8 x 6" Gr8 YZ Hex Bolt	JM0074245
5 1"-8 Gr2 Z Centerlock Hex Nut	JM0002149
6 40k Lb Safety Chain	JM0029261
7 1"-8 x 4" Gr8 YZ Hex Bolt	JM0074434
8 Cast Iron Spade 2-1/4" Pin Hole	JM0020529
9 Cast Iron Clevis (Bolt-On) 2-1/4" Pin Hole	JM0020527
10 3/4"-16 x 2-1/2" Gr8 YZ Fine Thread Hex Bolt	JM0015323
11 Cast Iron Clevis Hitch Assembly	JM0020537
12 3/8"-16 x 2-1/2" Gr5 Z Hex Bolt	JM0001647
13 3/8"-16 Gr2 Z Centerlock Hex Nut	JM0001512
14 Jack Handle for 10,000 lb and Up	JM0037953
15 5/8"-11 Gr2 Z Centerlock Hex Nut	JM0002146
16 5/8"-11 x 10-3/32" x 6-15/32" Square U-Bolt	JM0040576
17 10k Jack with 10" Tall Frame Tube Mount Plate (Dual Auger Carts)	JM0040578

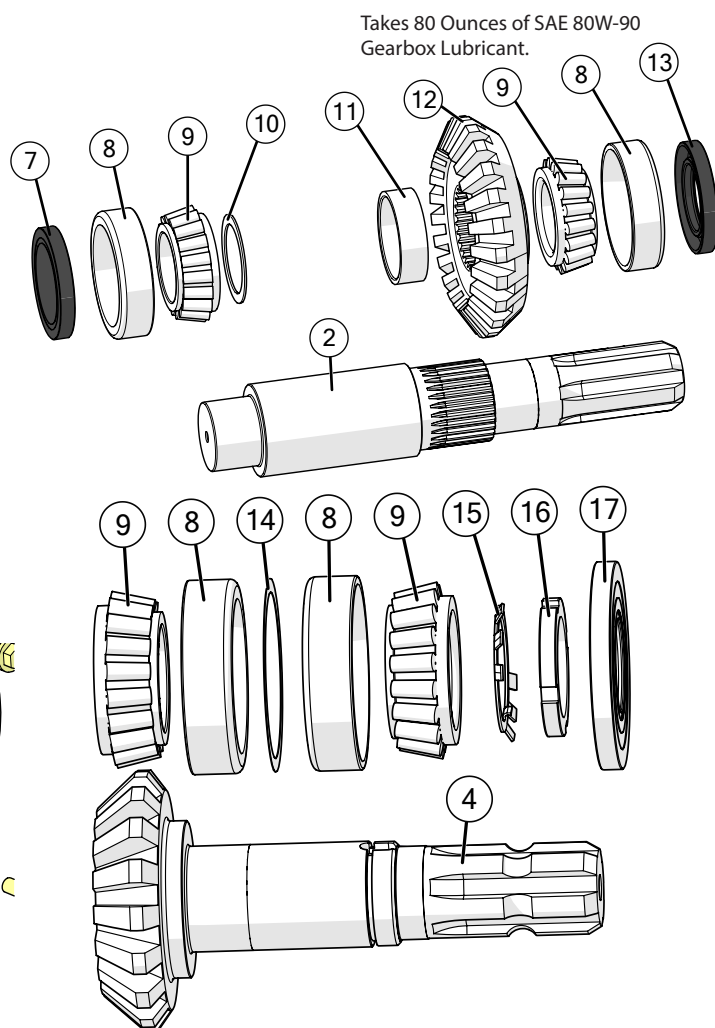
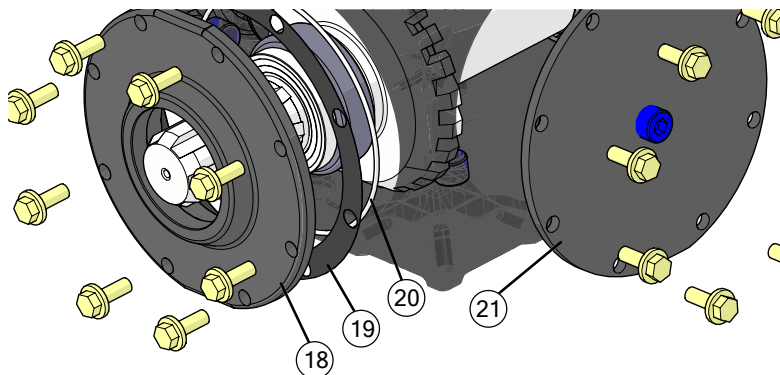
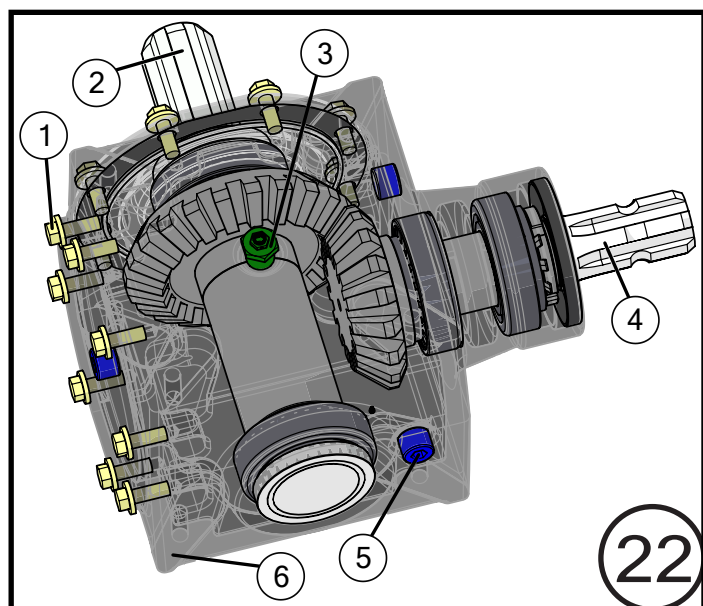
3 Directional Gear Box



Takes 96 Ounces of SAE 80W-90
Gearbox Lubricant.

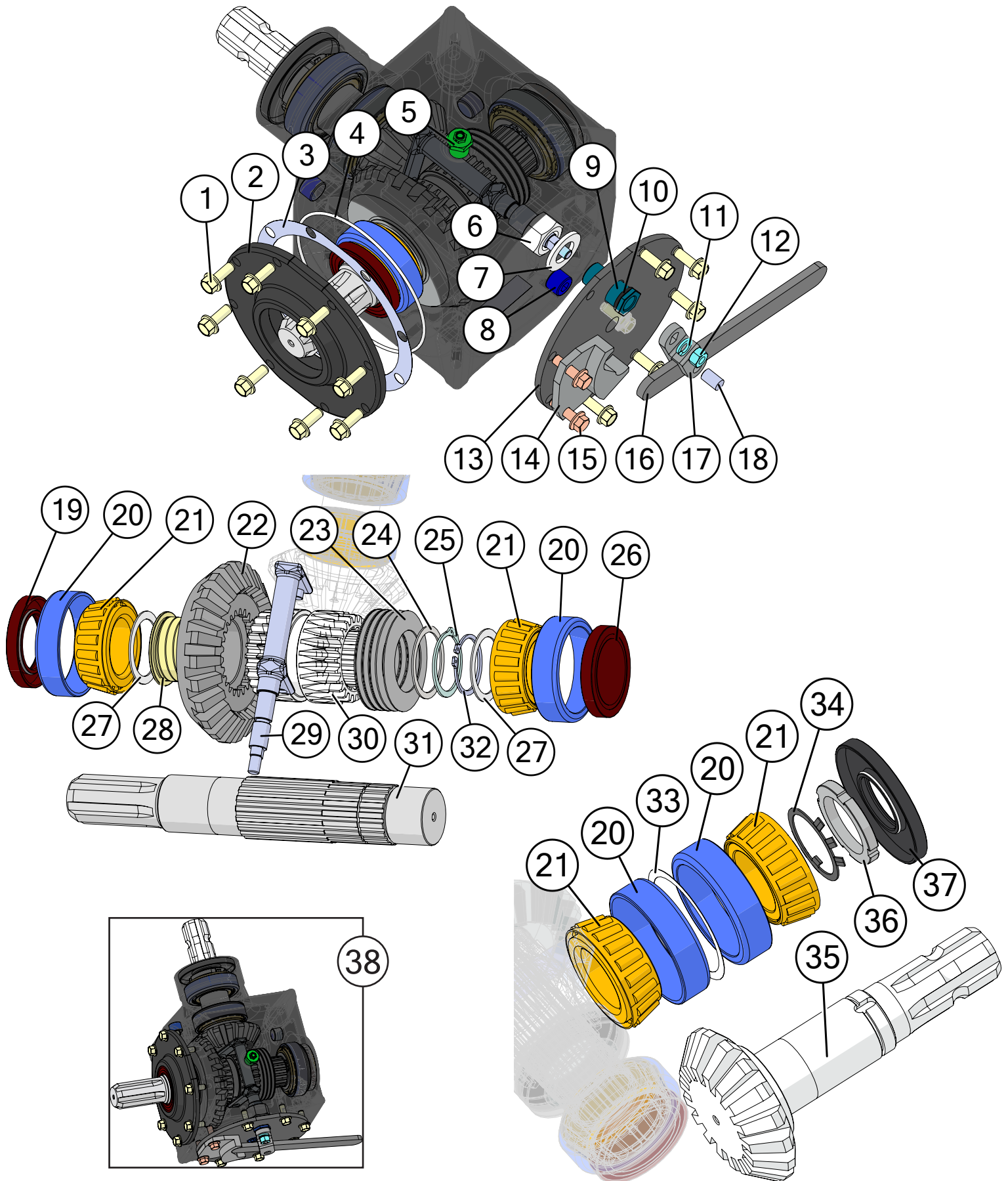
Description	Part No.
1 1/2"-14 NPT Pipe Plug for Weasler Gearbox (72-20007)	JM0025068
2 1/2" NPT Bushing 1/8" NPT Relief Plug (72-20011)	JM0025067
3 3/8"-16 UNC x 2-1/2" Gr5 Cap Screw for Weasler Gearbox (72-0002)	JM0025069
4 Housing Set (Top and Bottom) for Weasler Gearbox (70-76010)	JM0046058
5 Gearbox Exterior Dust Seal 1-3/4" ID	JM0049020
6 Endcap Seal (3-3/16"x 7/16") for Weasler Gearbox (71-40079)	JM0025063
7 Spacer Kit (19-16630)	JM0046073
8 Bearing Cup (3720)	JM0027905
9 Cone Bearing (3780)	JM0027906
10 Gear - 34 Teeth (71-06135)	JM0046061
11 Seal (2 x 3.196 x 0.4333) for Weasler Gearbox (71-40080)	JM0025062
12 Single End Shaft (09-70194)	JM0046062
13 Input Shaft Seal (1-3/4" x 2-23/32" x 33/64") for Weasler Gearbox (71-40052)	JM0025061
14 Spacer Kit (19-16631)	JM0046074
15 Bearing and Race Set (32210) for Weasler Gearbox (71-20017)	JM0025054
16 Gear - 17 Teeth (71-06134)	JM0046059
17 Double End Shaft (09-70244)	JM0046060
18 3 Directional Gearbox for Drag Carts (6050-0760)	JM0045977

90 Degree Gear Box



Description	Part No.
1 3/8"-16 x 1" Gr5 Z SF Hex Bolt	JM0002092
2 Shaft Cross (09-70312)	JM0046081
3 1/2" NPT Bushing 1/8" NPT Relief Plug (72-20011)	JM0025067
4 Gear Shaft - 17 Teeth (71-06194)	JM0046075
5 1/2"-14 NPT Pipe Plug for Weasler Gearbox (72-20007)	JM0025068
6 Housing - 6490 Machining (70-06144)	JM0046076
7 Endcap Seal (3-3/16" x 7/16") for Weasler Gearbox (71-40079)	JM0025063
8 Bearing Cup (3720)	JM0027905
9 Bearing Cone (3780)	JM0027906
10 Spacer (51 x 65 x 1.4) (11-40615)	JM0046104
11 Spacer (60 x 68 x 20) (11-40615)	JM0046083
12 Gear - 23 Teeth (71-06119)	JM0046080
13 Seal (2 x 3.196 x 0.4333) for Weasler Gearbox (71-40080)	JM0025062
14 Spacer (80 x 92.9 x .02) (11-40566)	JM0046085
15 Retaining Shim (51 x 61 x 1.2) (11-40564)	JM0046086
16 Locknut - M50 x 1-1/2 (11-30027)	JM0046087
17 Seal (45 x 100 x 10) (28-11013)	JM0046084
18 Endcap - 64990 Machined (70-16093)	JM0046078
19 Gasket Kit - 6000 Series (19-16611)	JM0046077
20 O-Ring (160 x 3.1) (28-1007)	JM0046089
21 Top Cover (90 Deg. Gearbox) (7-7/8" OD)	JM0046079
22 90 Degree Gearbox Complete (1.35-1) (2" Output) (6490-0819)	JM0044943

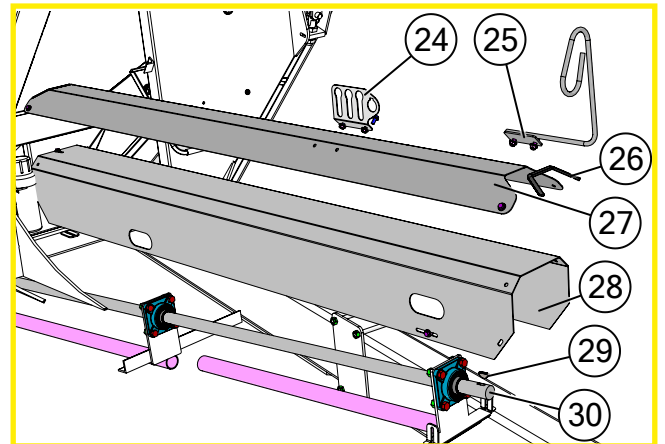
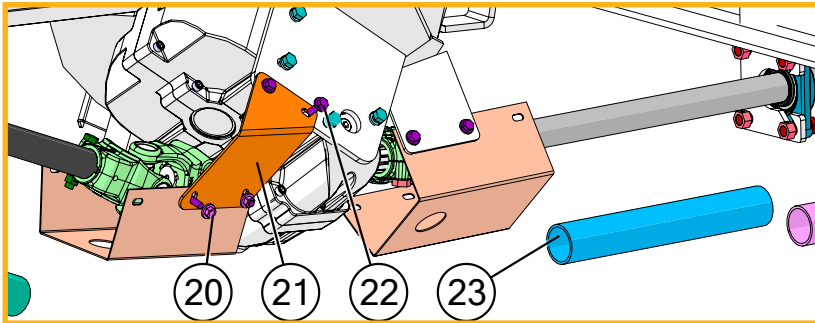
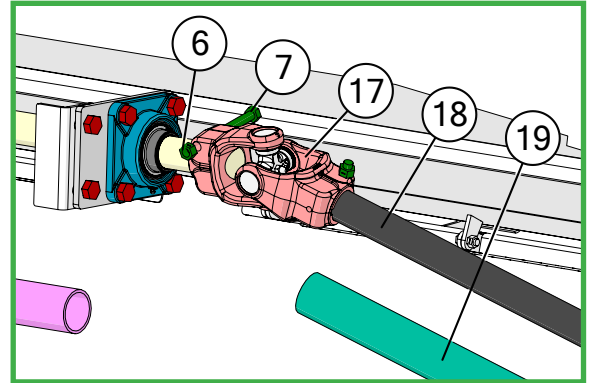
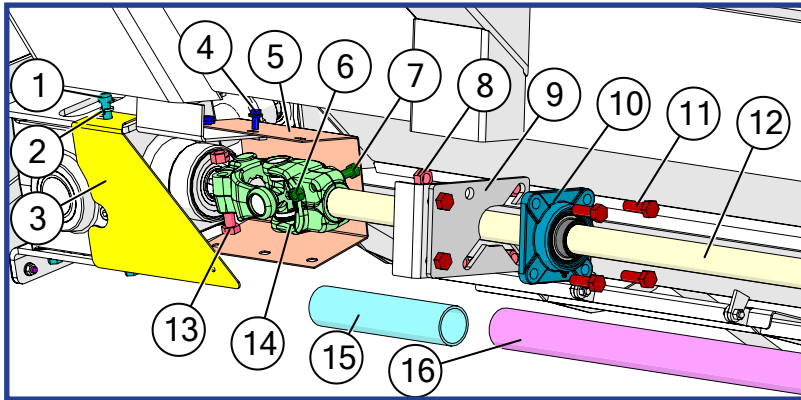
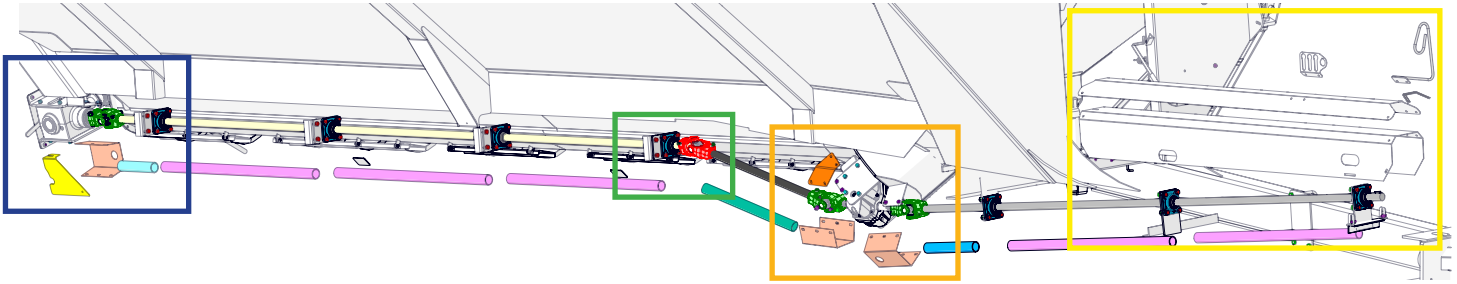
90 Degree Shifter Gearbox



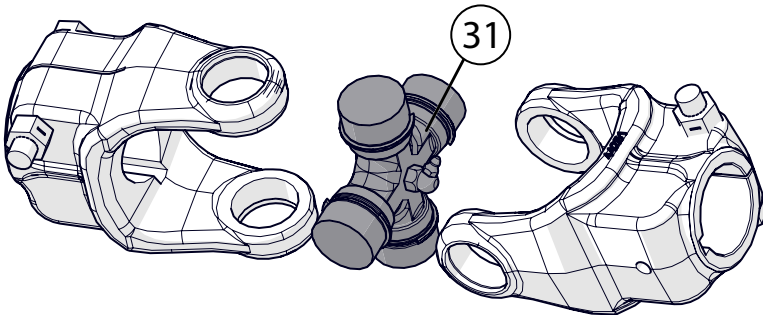
90 Degree Shifter Gearbox

	Description	Part No.
1	3/8"-16 x 1" Gr5 Z SF Hex Bolt	JM0002092
2	Endcap - 64990 Machined (70-16093)	JM0046078
3	Gasket Kit - 6000 Series (19-16611)	JM0046077
4	O-Ring (160 x 3.1) (28-1007)	JM0046089
5	1/2" NPT Bushing 1/8" NPT Relief Plug (72-20011)	JM0025067
6	M24 x 1.5 CL.8 Nut (11-30052)	JM0061770
7	Washer for Weasler Shifter Gearbox (11-40788)	JM0061768
8	1/2"-14 NPT Pipe Plug for Weasler Gearbox (72-20007)	JM0025068
9	Screw Thread Bushing for Weasler Gearbox (11-81136)	JM0061760
10	O-Ring for Weasler Shifter Gearbox (28-21015)	JM0061772
11	Lock Washer for Weasler Shifter Gearbox (11-15196)	JM0061769
12	M10 Hex Nut (11-10198)	JM0061771
13	Top Cover for Weasler Shifter Gearbox (70-16154)	JM0061750
14	Plate for Weasler Shifter Gearbox (20-16259)	JM0061757
15	3/8" x 1-1/4" SF Hex Bolt for Weasler Shifter Gearbox (11-21037)	JM0061759
16	Shifter Lever (73-16040)	JM0061763
17	Shifter Lever Fulcrum (73-16039)	JM0061762
18	Dowell Pin (11-70080)	JM0061775
19	Seal (2 x 3.196 x 0.4333) for Weasler Gearbox (71-40080)	JM0025062
20	Bearing Cup (3720)	JM0027905
21	Bearing Cone (3780)	JM0027906
22	23 Tooth Gear for Weasler Shifter Gearbox (71-06071)	JM0061756
23	Spring for Weasler Shifter Gearbox (23-16098)	JM0061774
24	Spacer for Weasler Shifter Gearbox (11-40823)	JM0061767
25	Retaining Ring for Weasler Shifter Gearbox (24-15359)	JM0061765
26	Endcap Seal (3-3/16" x 7/16") for Weasler Gearbox (71-40079)	JM0025063
27	Spacer (51 x 65 x 1.4) (11-40615)	JM0046104
28	Bronze Bushing for Weasler Shifter Gearbox (04-180590)	JM0061754
29	Shifter Weldment (73-16037)	JM0061761
30	Spline Bushing for Weasler Shifter Gearbox (05-15540)	JM0061764
31	Cross Shaft for Weasler Shifter Gearbox (09-70332)	JM0061755
32	Retaining Ring for Weasler Shifter Gearbox (24-15313)	JM0061766
33	Spacer (80 x 92.9 x .02) (11-40566)	JM0046085
34	Retaining Shim (51 x 61 x 1.2) (11-40564)	JM0046086
35	17 Tooth Gear Shaft for Weasler Shifter Gearbox (71-06194)	JM0046075
36	Locknut - M50 x 1-1/2 (11-30027)	JM0046087
37	Seal (45 x 100 x 10) (28-11013)	JM0046084
38	6490 Weasler Shifter Gearbox	JM0054985

Driveline



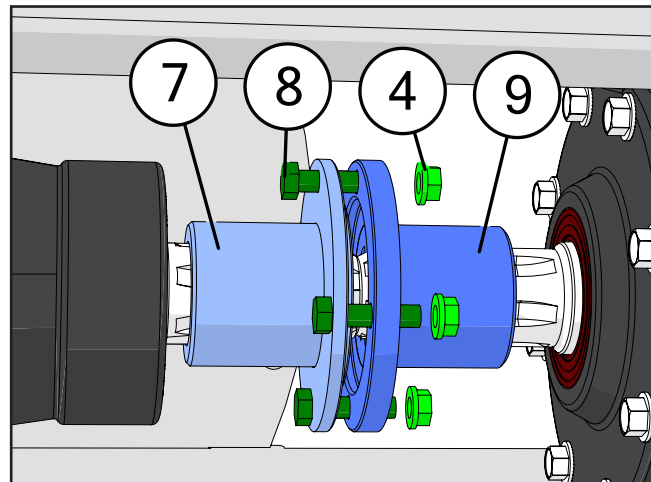
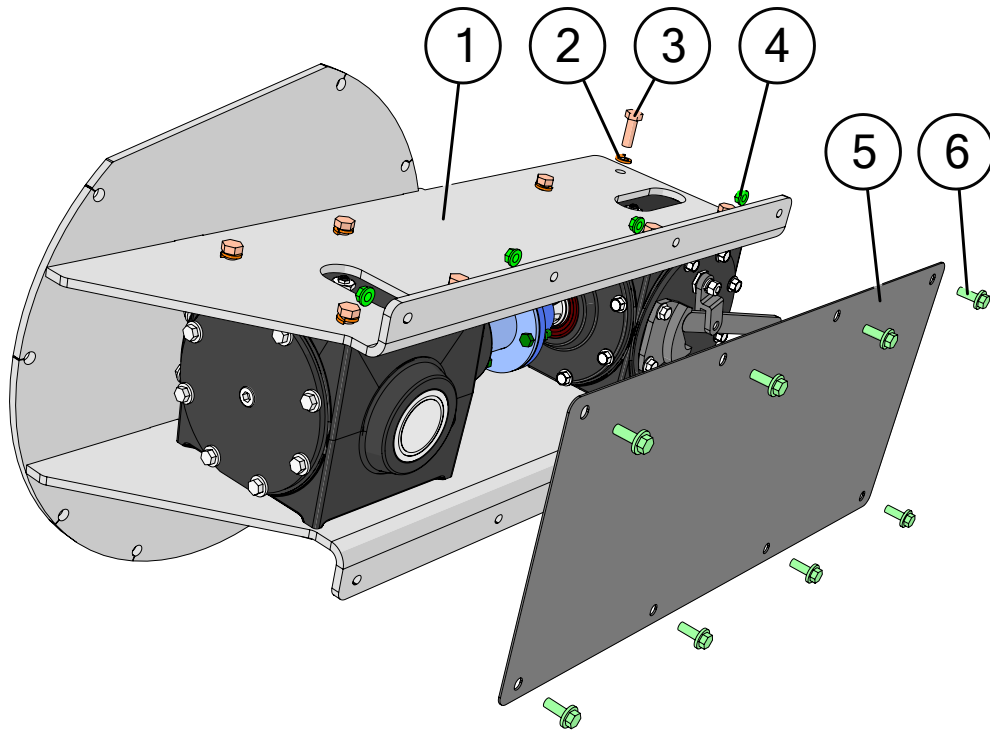
NOTE: Cart uses 2 half moon keys on each driveline.



Driveline

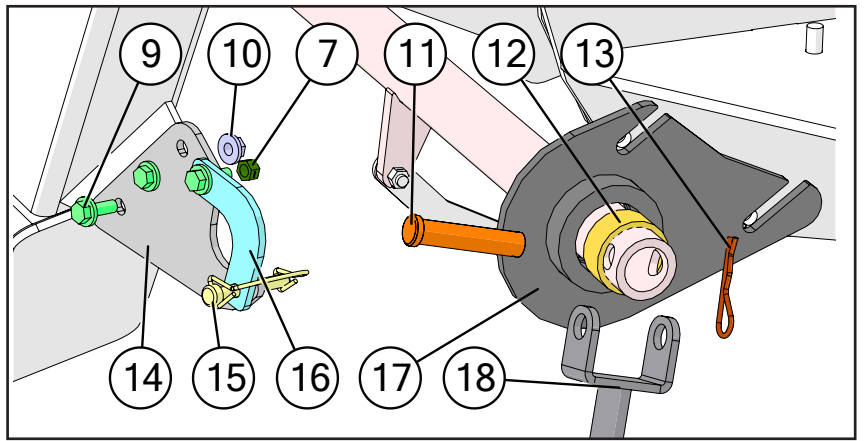
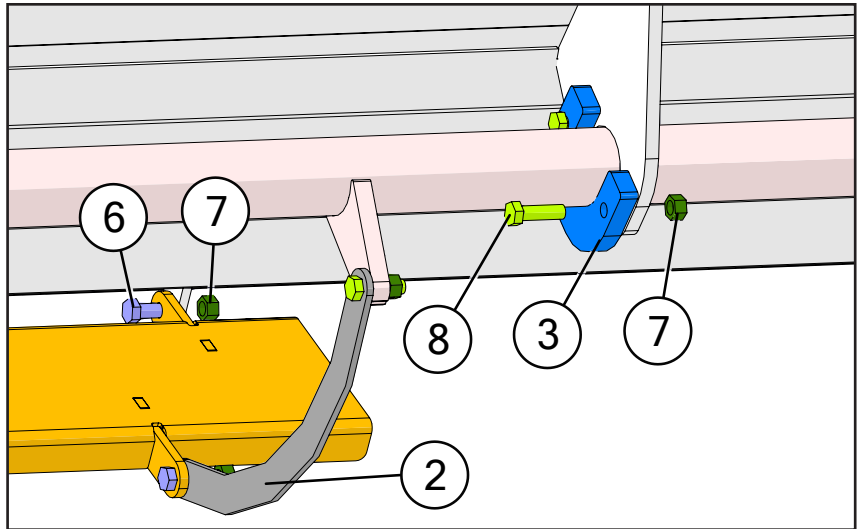
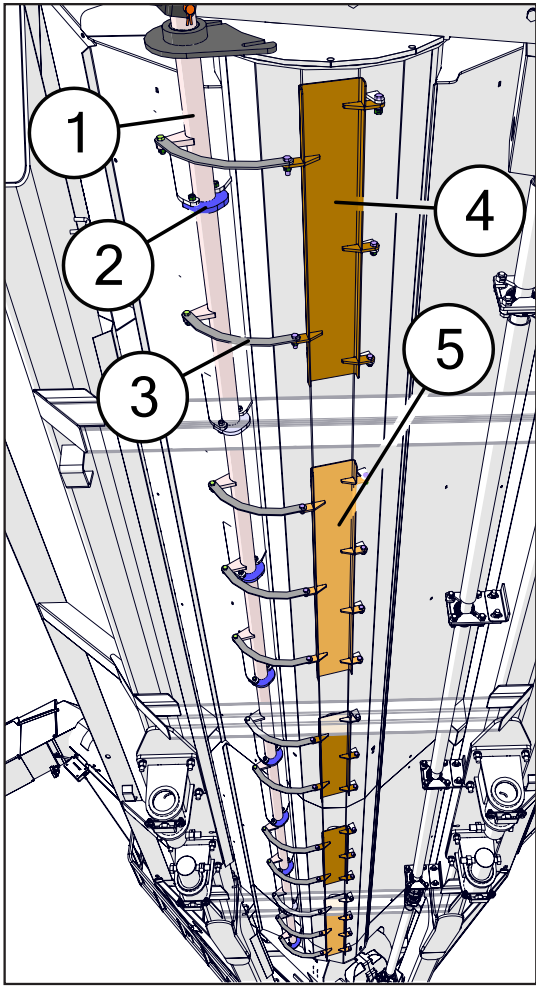
	Description	Part No.
1	1/2"-13 x 1-1/2" Gr5 Z Hex Bolt	JM0002100
2	1/2" Gr2 Z Lock Washer	JM0019021
3	90 Deg Gearbox U-Joint Shield	JM0042637
4	3/8"-16 x 3/4" Gr5 Z SF Hex Bolt	JM0001750
5	U-Joint Shield	JM0012698
6	1/2"-13 Gr2 Z Centerlock Hex Nut	JM0001511
7	1/2"-13 x 3" Gr5 Z Hex Bolt	JM0016678
8	5/8"-11 Gr2 Z Centerlock Hex Nut	JM0002146
9	Drive Shaft Support Plate 7-3/4" x 5-1/2" (1732-2332)	JM0075609
10	1-3/4" 4 Bolt Flange Bearing, 5/8" Bolt Hole (UCF-20928)	JM0018774
11	5/8"-11 x 1-3/4" Gr5 Z Hex Bolt	JM0016681
12	190" x 1-3/4" Drive Shaft (DS-134190)	JM0026235
13	5/8"-11 x 3" Gr5 Z Hex Bolt	JM0002105
14	44R U-Joint - 1-3/4" Spline x 1-3/4" Round Clamp Weasler (252-27700)	JM0041389
15	2" x 11" PVC Pipe	JM0075686
16	2" x 50" PVC Pipe	JM0044985
17	44R U-Joint - 1-3/4" Round Clamp x 1-3/4" Round Clamp Weasler (252-27701)	JM0041390
18	1-3/4" x 33-1/4" Drive Shaft	JM0075617
19	2" x 26" PVC Pipe	JM0075687
20	3/8"-16 Gr5 Z SF Hex Nut	JM0002152
21	Knuckle Shield Mount Extension for Dual Auger Carts	JM0051601
22	3/8"-16 x 1" Gr5 Z SF Hex Bolt	JM0002092
23	2" x 15" PVC Pipe	JM0044986
24	3 Keyed LF Hydraulic Hose Holder	JM0021437
25	Long Fold Hydraulic Hose Holder Weldment	JM0049268
26	Sheet Metal Protective Edging	JM0033726
27	97" Hydraulic Hose Shield (1312, 1412, 1522, 32 series)	JM0020941
28	32 Series PTO Shield	JM0038119
29	3/8" x 1-1/2" Half Moon Key	JM0018772
30	Drive Shaft, 1-3/4" x 144" (DS-134144)	JM0021242
31	Cross Kit (U-Joint) (44R) (CK-44R)	JM0017958

Rear 90 Degree Gearboxes Mount

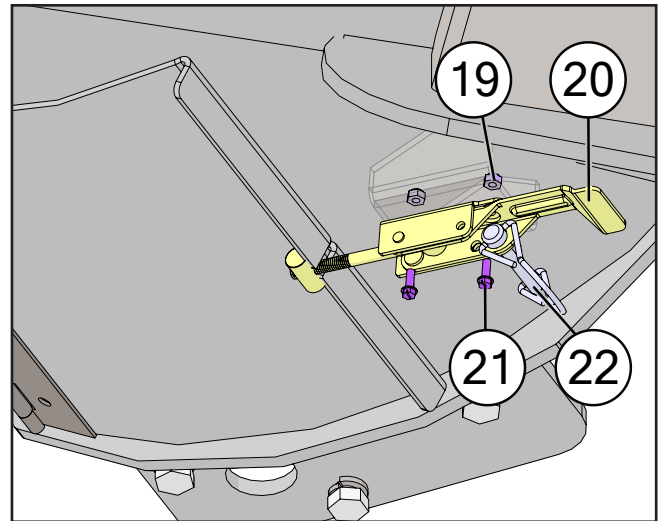


	Description	Part No.
1	Rear Gearbox Mount Weldment	JM0046340
2	1/2" Gr2 Z Lock Washer	JM0019021
3	1/2"-13 x 1-1/2" Gr5 Z Hex Bolt	JM0002100
4	3/8"-16 Gr5 Z Small OD SF Hex Nut	JM0048086
5	Rear Disconnect - Back Plate - Shifter Gearbox	JM0054785
6	3/8"-16 x 1" Gr5 Z SF Hex Bolt	JM0002092
7	90 Degree Shifter Gearbox Coupler - 1.75" Spline Weldment - Male	JM0048083
8	3/8"-16 x 1.5" Gr2 Z Partially Threaded Hex Bolt	JM0059103
9	90 Degree Shifter Gearbox Coupler - 1.75" Spline Weldment - Female	JM0059078

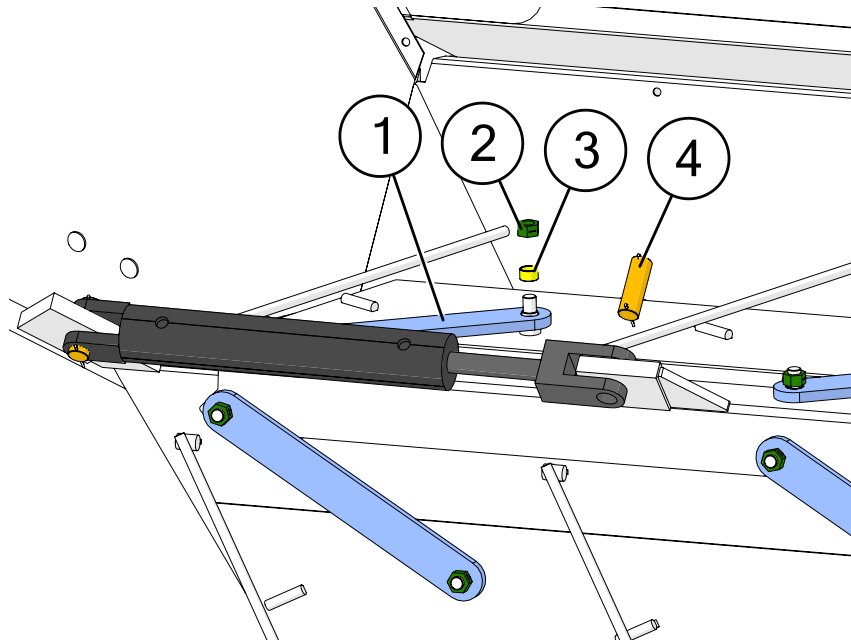
Clean Out Doors



Description	Part No.
1 Torsion Tube Weldment (240") (1732, 2032, 2332)	JM0075824
2 2" Pipe Guide (1/2" x 3" x 3-7/8")	JM0041232
3 Clean Out Door Link Plate for Flat Bottom Trough	JM0051067
4 Horizontal Flat Clean Out Door 30"	JM0075825
5 Horizontal Flat Clean Out Door 45" (Long)	JM0050778
6 3/8"-16 x 1" Gr5 Z Hex Bolt	JM0001592
7 3/8"-16 Gr2 Z Centerlock Hex Nut	JM0001512
8 3/8"-16 x 1-1/4" Gr5 Z Hex Bolt	JM0016675
9 3/8"-16 x 1" Gr5 Z SF Hex Bolt	JM0002092
10 3/8"-16 Gr5 Z SF Hex Nut	JM0002152
11 3/4" x 3-1/2" (3-1/4" Usable Length) Z Clevis Pin	JM0042973
12 2" ID x 2-3/8" OD x 1" LG Bronze Bushing (EB-2)	JM0027653
13 3/16" x 2-1/2" Hair Clip Pin (316HP)	JM0001657
14 Clean Out Handle - Nylon Mount Plate	JM0042708
15 3/8" x 2-1/2" Z Round Wire Lynch Pin	JM0014929
16 Drag Auger Clean Out Door Handle Latch	JM0047593
17 Clean Out Gate Pipe Guide Weldment	JM0045561
18 32 Series Clean Out Gate Handle (32-1/4")	JM0043146
19 #8-32 Z Nylon Locking Hex Nut	JM0012334
20 Vertical Clean Out Door Latch (32 Series)	JM0049152
21 #8-32 x 1/2" Slotted Hex Washer Head Machine Screw	JM0012333
22 1/4" x 1-3/4" Lynch Pin	JM0001478

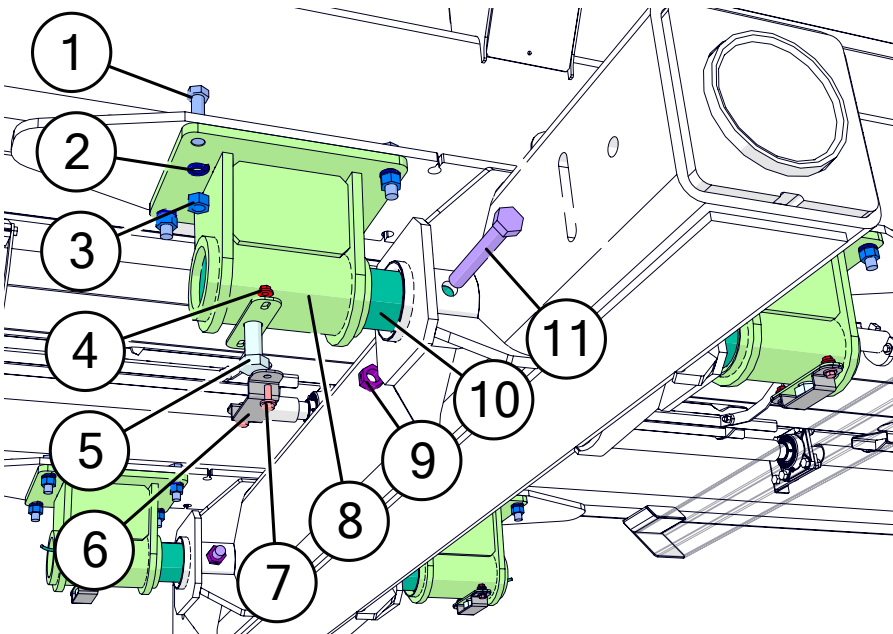


Feed Gate



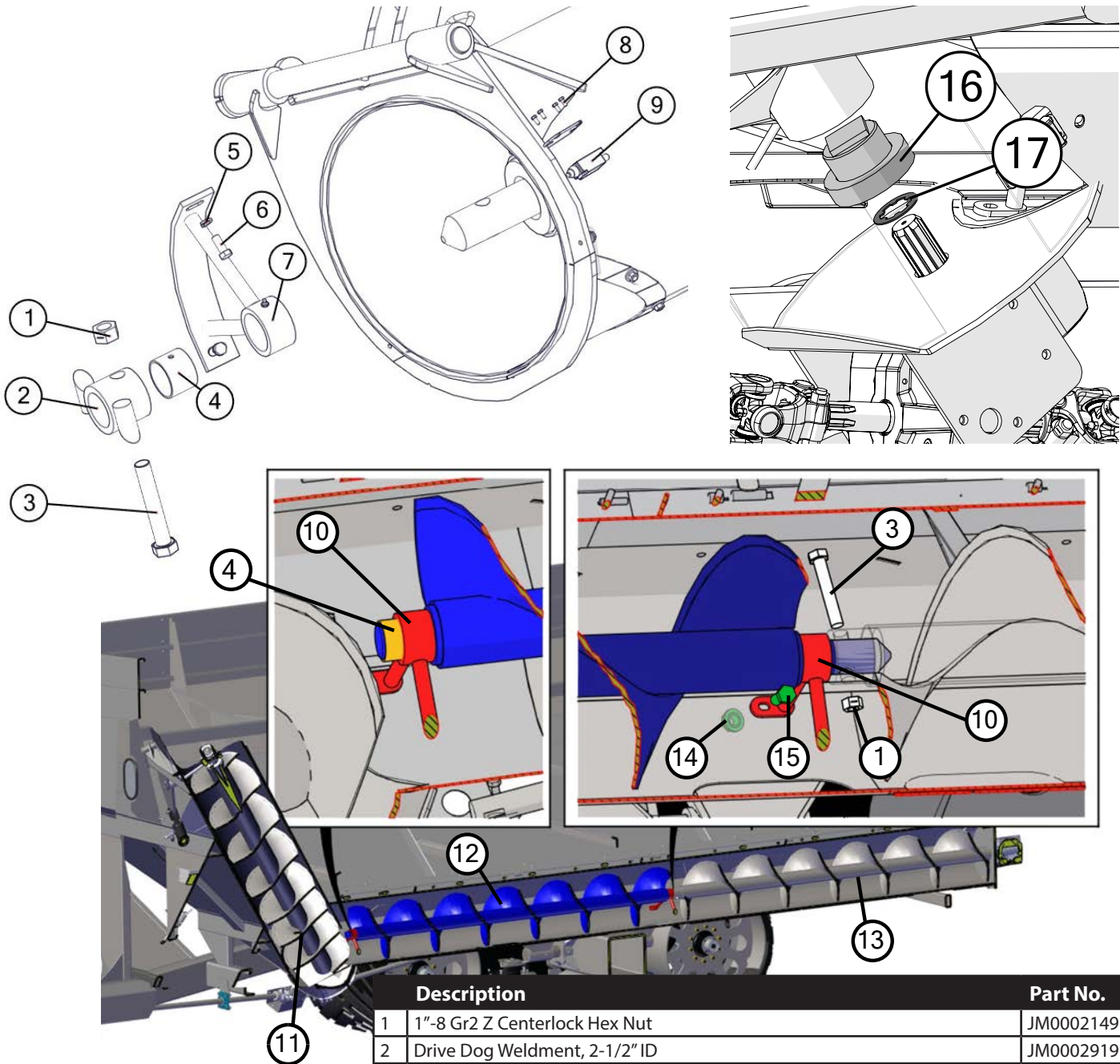
	Description	Part No.
1	Feed Gate Master Link 1/2" Thick with Bronze Bushings	JM0051055
2	5/8"-11 Gr2 Z Centerlock Hex Nut	JM0002146
3	Bronze Bushing 3/4" ID x 7/8" OD x 1/2"	JM0051109
4	1" x 3" Clevis Pin with Cotter Pins	JM0019407

Track Mount



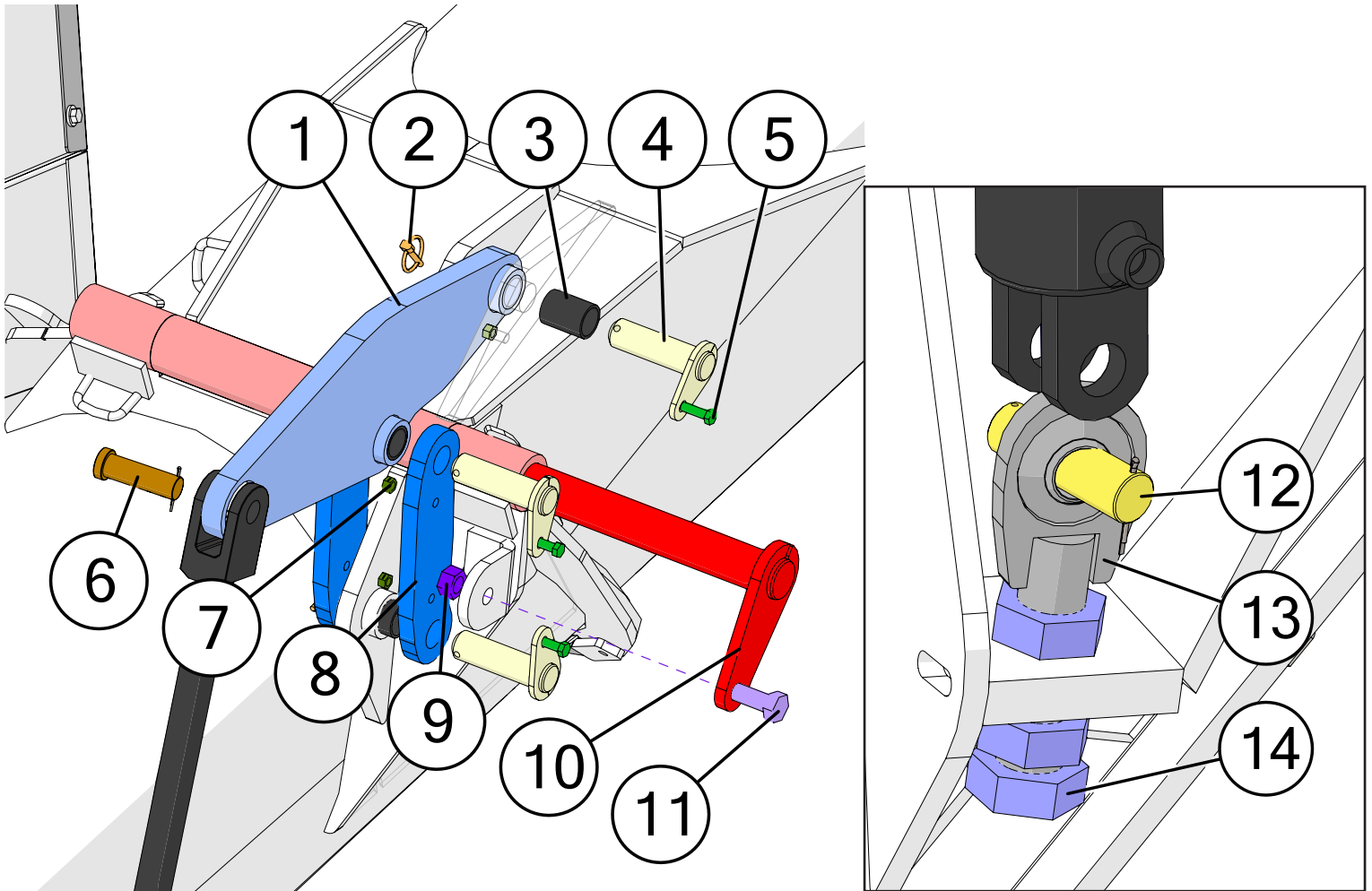
	Description	Part No.
1	3/4"-10 x 3" Gr5 Z Hex Bolt	JM0019201
2	3/4" Z Lock Washer	JM0018544
3	3/4"-10 Gr2 Z Hex Nut	JM0002125
4	3/8"-16 Gr5 Z SF Hex Nut	JM0002152
5	1"-8 x 8" Gr8 YZ Hex Bolt	JM0042652
6	Scale Bolt Retainer Bracket	JM0042616
7	3/8"-16 x 1" Gr5 Z SF Hex Bolt	JM0002092
8	1732 Scale Bar Attachment	JM0075560
9	1"-8 Gr2 Z Centerlock Hex Nut	JM0002149
10	3-3/4" Non Scale Bar	JM0041931
11	1"-8 x 7" Gr8 YZ Hex Bolt	JM0042653

Lower Auger Assembly



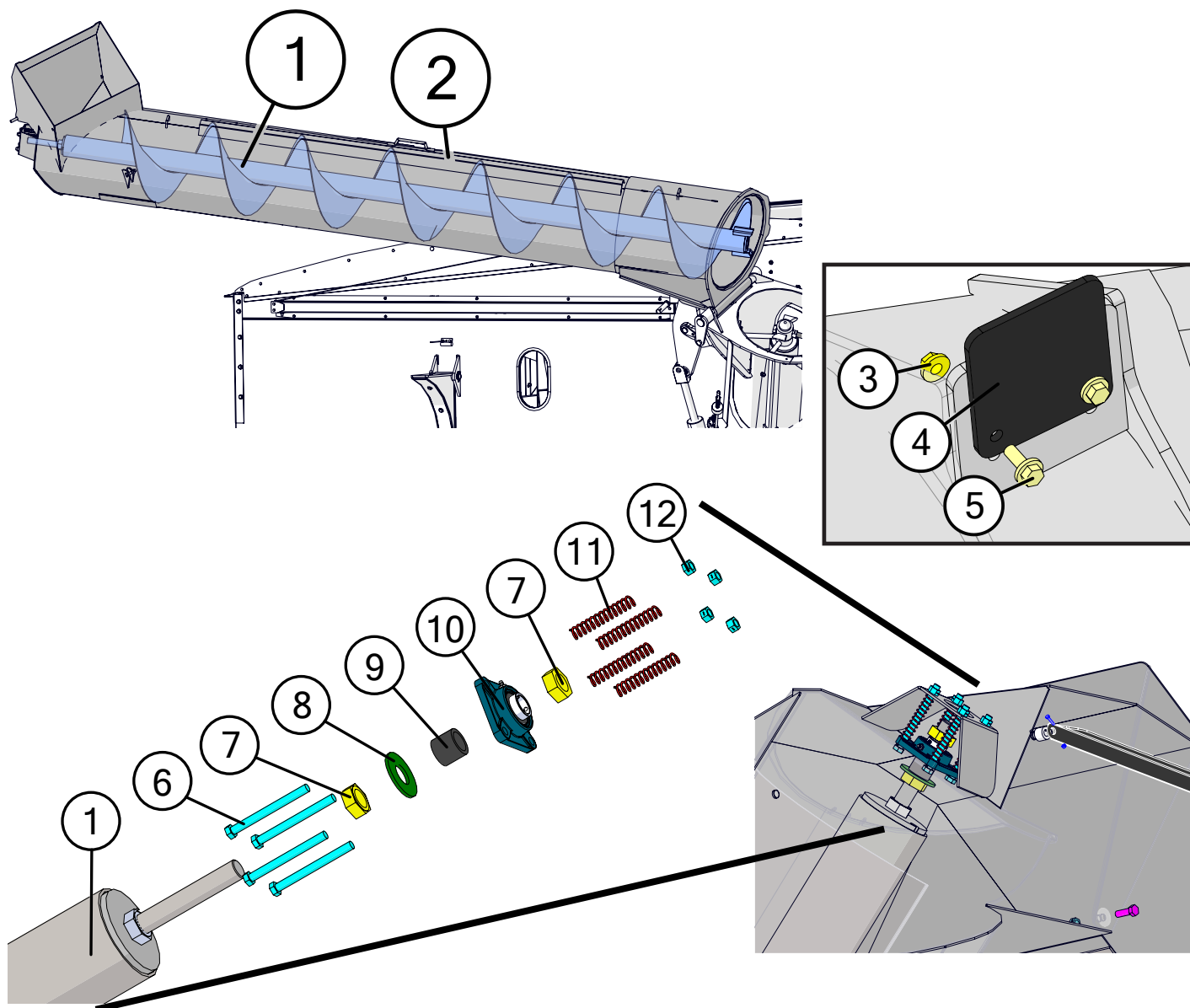
	Description	Part No.
1	1"-8 Gr2 Z Centerlock Hex Nut	JM0002149
2	Drive Dog Weldment, 2-1/2" ID	JM0002919
3	1"-8 x 6" Gr8 Z Hex Bolt	JM0046609
4	2-1/2" ID Bronze Bushing (BB-212)	JM0016841
5	1/2" Gr2 Z Lock Washer	JM0019021
6	1/2"-13 x 1-1/4" Gr5 Z Hex Bolt	JM0001513
7	Hanger Bushing Assembly (22") (HBA-22)	JM0019656
8	M5-0.8 x 12 Gr8.8 Z Hex Bolt	JM0036046
9	Limit Switch for Field Light (ME-8111)	JM0036040
10	20" Horizontal Auger Hanger Bracket	JM0038732
11	Bottom Vertical Auger (145-3/16" Lg) (32 Series)	JM0036809
12	Front Horizontal Auger (128-5/8" Lg)	JM0042920
13	Rear Horizontal Auger (120-1/2" Lg)	JM0042922
14	1/2"-13 Gr5 Z SF Hex Nut	JM0002153
15	1/2"-13 x 1-1/2" Gr5 Z Hex Bolt	JM0002100
16	Spline Coupler 2" ID x 5-15/32" OD Weldment (Weasler Gearbox) (SC-334x3)	JM0009701
17	2" Output Shaft Gearbox Spline Washer (3" OD)	JM0020638

Upper Auger Linkage



	Description	Part No.
1	Main Fold Link (22-1/2" x 7-7/16" x 1")	JM0034658
2	1/4" Diameter Snap Ring	JM0001870
3	1-1/4" ID x 1-1/2" OD x 2" Long Sleeve Composite Bushing	JM0021957
4	1-1/4" Pin Keeper (4-5/8" Lg)	JM0035930
5	3/8"-16 x 1-1/4" Gr5 Z Hex Bolt	JM0016675
6	1" x 3-1/4" Clevis Pin (X-Tended Reach)	JM0047300
7	3/8"-16 Gr2 Z Centerlock Hex Nut	JM0001512
8	Master Link w/ Keeper (11-1/8" x 3" x 3/4")	JM0035075
9	5/8"-11 Gr2 Z Centerlock Hex Nut	JM0002146
10	22" Hinge Pin w/ Keeper Weldment (23" Lg) (12,22 & 32 Series)	JM0024966
11	5/8"-11 x 1-1/2" Gr5 Z Hex Bolt	JM0002103
12	1" x 3-1/2" Clevis Pin with Cotter Pins	JM0001817
13	HD Adjustable Pac Man Weldment	JM0021417
14	1-1/4"-12 Gr5 Z Hex Jam Nut	JM0002158

Upper Auger Assembly



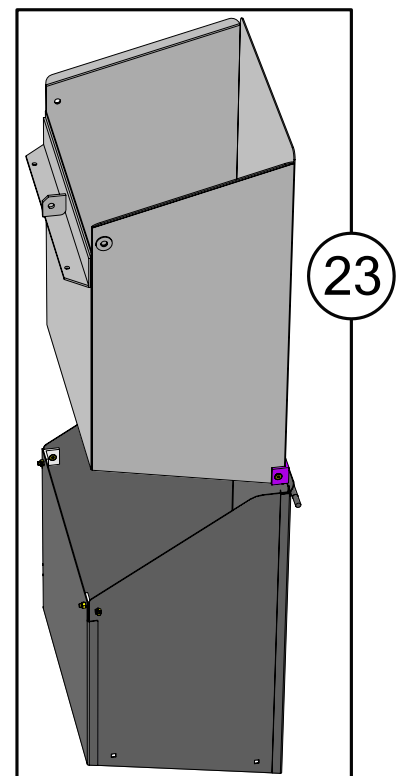
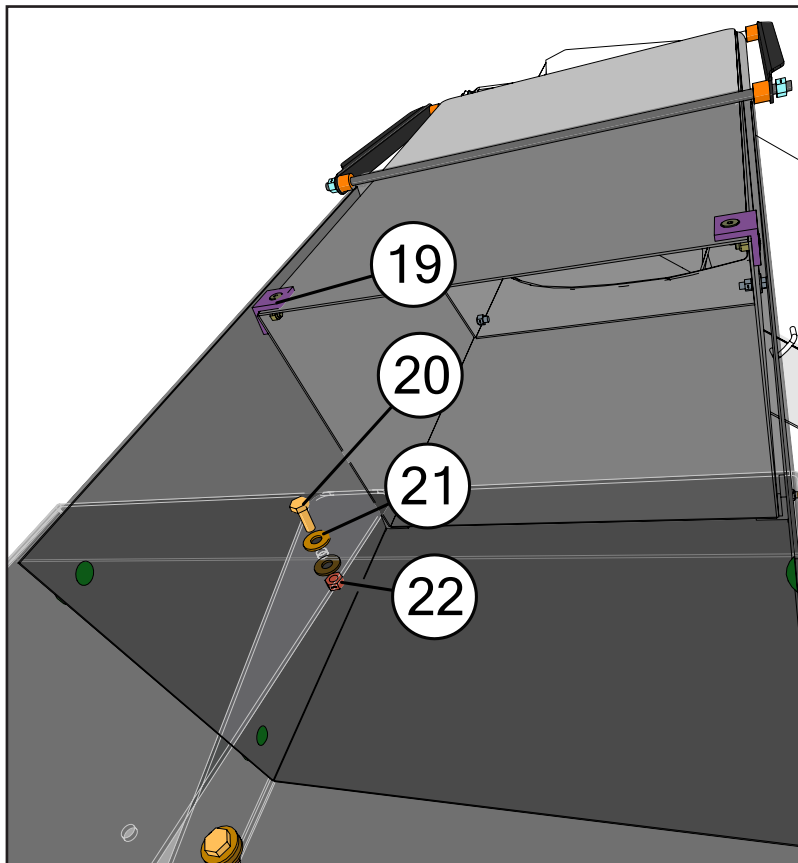
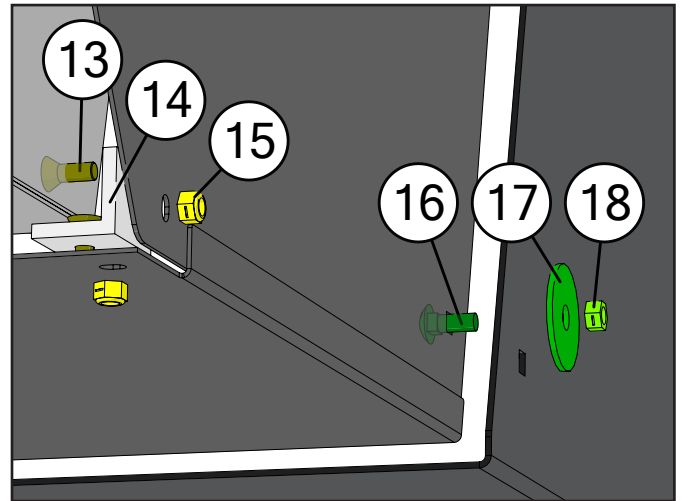
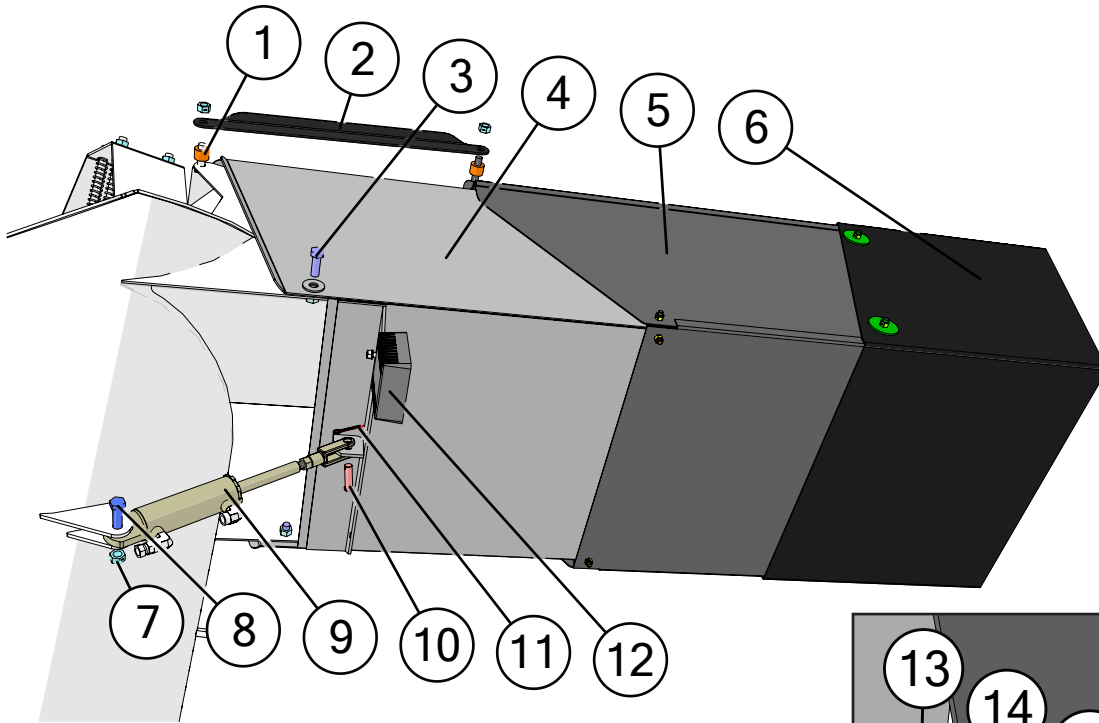
	Description	Part No.
1	22" Upper Flighting (127" Lg)	JM0038528
2	22" 32 Series Top Tube Weldment	JM0037727*
3	3/8"-16 Gr5 Z SF Hex Nut	JM0002152
4	Upper Auger Rest Plate	JM0034981
5	3/8"-16 x 1" Gr5 Z SF Hex Bolt	JM0002092
6	1/2"-13 x 5-1/2" Gr5 Z Hex Bolt	JM0001498
7	1-1/4"-12 PN Gr5 Hex Jam Nut	JM0001606
8	1-3/8", ID 3" OD Flat Washer	JM0015731
9	Top Auger Collar 2-1/4" Long (1-3/4" OD)	JM0016792
10	1-1/4" Flange Bearing, 4 Hole (GRAF-206)	JM0018560
11	4-1/2" Compression Spring (CMSUAA-4)	JM0018559
12	1/2"-13 Gr2 Z Centerlock Hex Nut	JM0001511

*-R = Red
 *-B = Blue
 *-G = Green
 *-Y = Yellow
 *-BLK = Black

When requesting an item with color, end the part number with -R, -B, -G, -Y, or -BLK. (e.g. JM0000000-R)



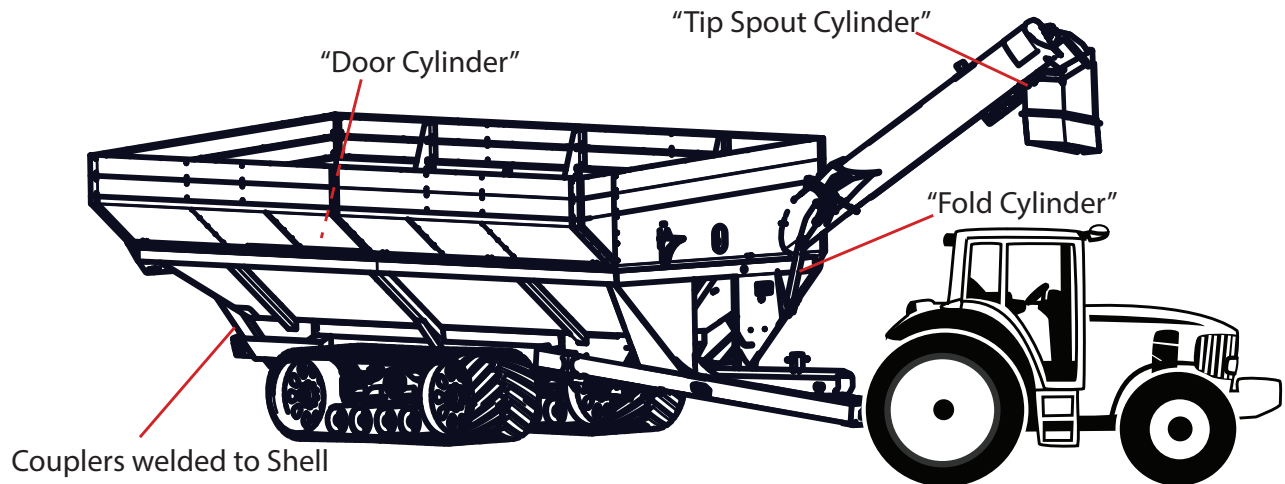
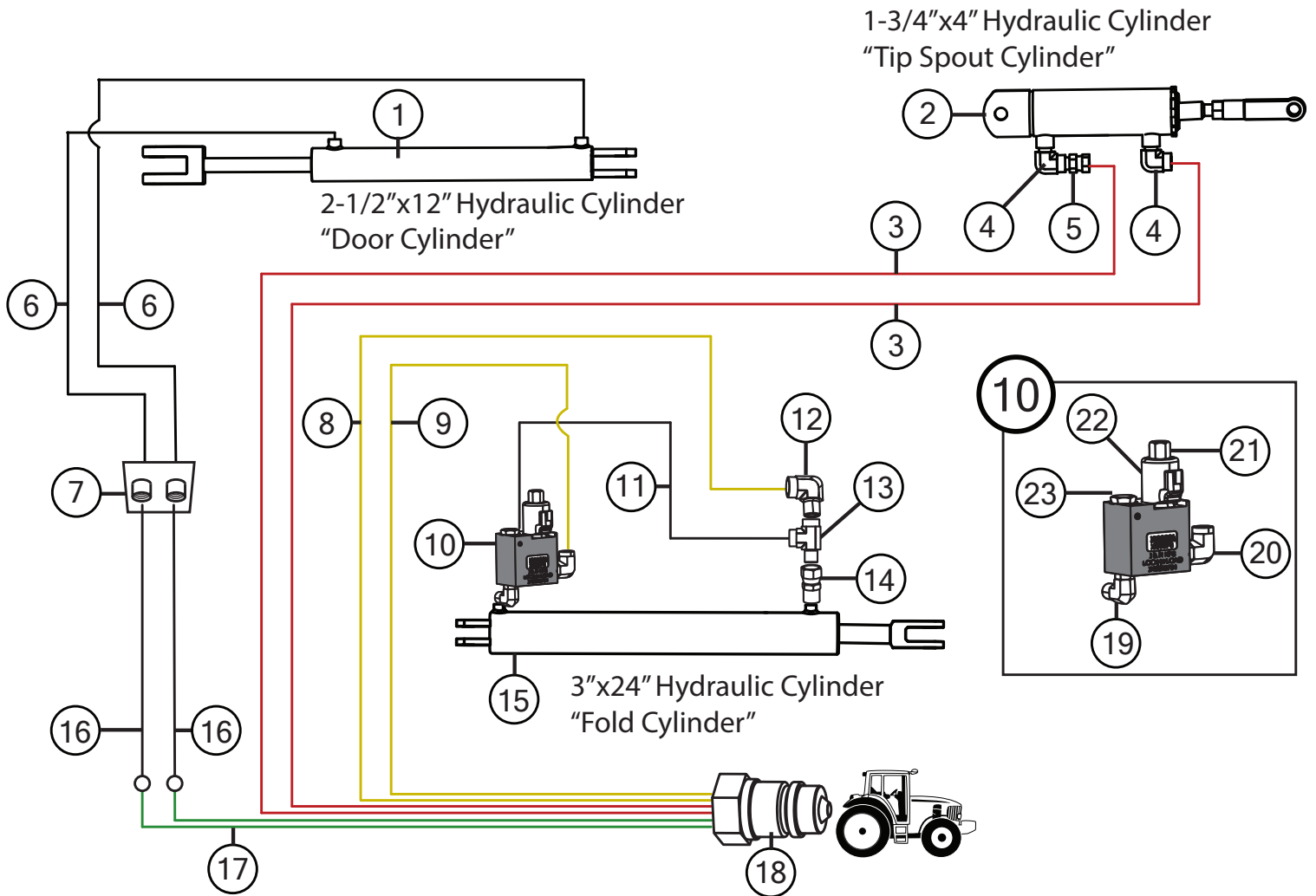
Spout Assembly



Spout Assembly

	Description	Part No.
1	1" OD 33/64" ID x 3/4" L Black UV Nylon Spacer	JM0001962
2	Telescoping Spout Main Linkage Rod	JM0034363
3	1/2"-13 x 1-1/2" Gr5 Z Hex Bolt	JM0002100
4	22" Inner Telescoping Spout	JM0038218
5	22" Outer Telescoping Spout	JM0038227
6	4-Sided Telescoping Spout Rubber Extension (22") (32 Series)	JM0037795
7	1/2"-13 Gr2 Z Centerlock Hex Nut	JM0001511
8	1/2"-13 x 2" Gr5 Z Hex Bolt	JM0001593
9	1-3/4" x 4" Hydraulic Cylinder (1/2" Clevis and Tab Ends) (HC-FCS)	JM0018564
10	1/2" x 1-3/4" Clevis Pin, Usable Length 1-1/2"	JM0018264
11	5/32" x 1-1/2" Cotter Pin	JM0014348
12	LED Field Light with Bullet Connector	JM0050949
13	5/16"-18 x 5/8" Flat Head Bolt Z	JM0024963
14	Nylon Spout Guide (Taper Inside)	JM0034308
15	5/16" - 18 Gr5 Z Nylon Locking Hex Nut	JM0049059
16	3/8"-16 x 1" Gr5 Z Carriage Bolt	JM0001632
17	1/2" ID x 2-1/4" OD Flat Washer - 1/8" Thick	JM0019081
18	3/8"-16 Gr2 Z Centerlock Hex Nut	JM0001512
19	Nylon Spout Guide (Taper Outside)	JM0035132
20	1/4"-20 x 3/4" Gr5 Z Hex Bolt	JM0001507
21	1/4" ID, 3/4" OD Z Flat Washer	JM0003090
22	1/4"-20 Gr2 Z Centerlock Hex Nut	JM0001505
23	32 Series Tip Spout Assembly	JM0047941

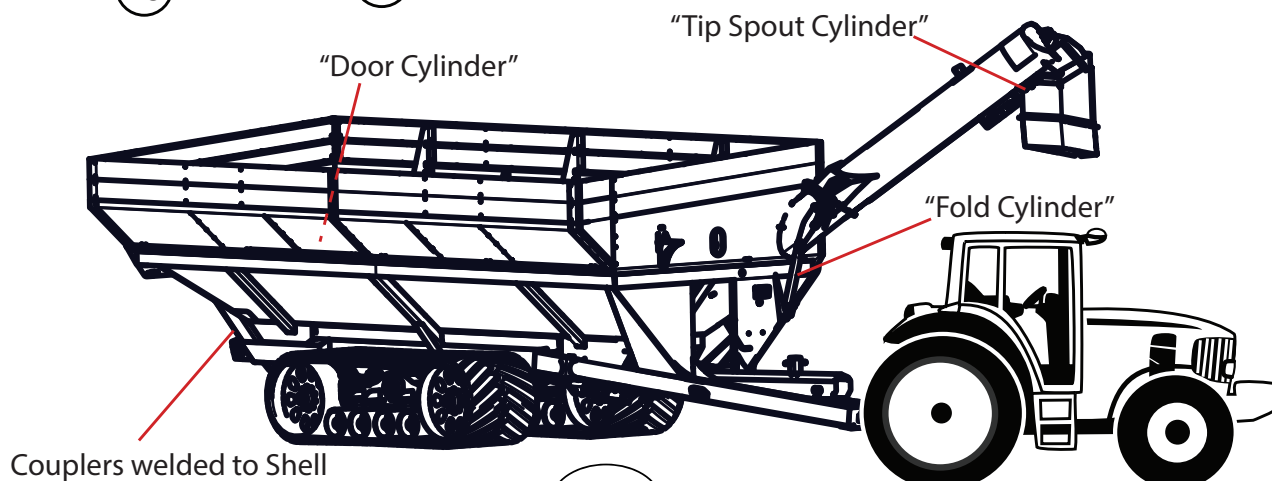
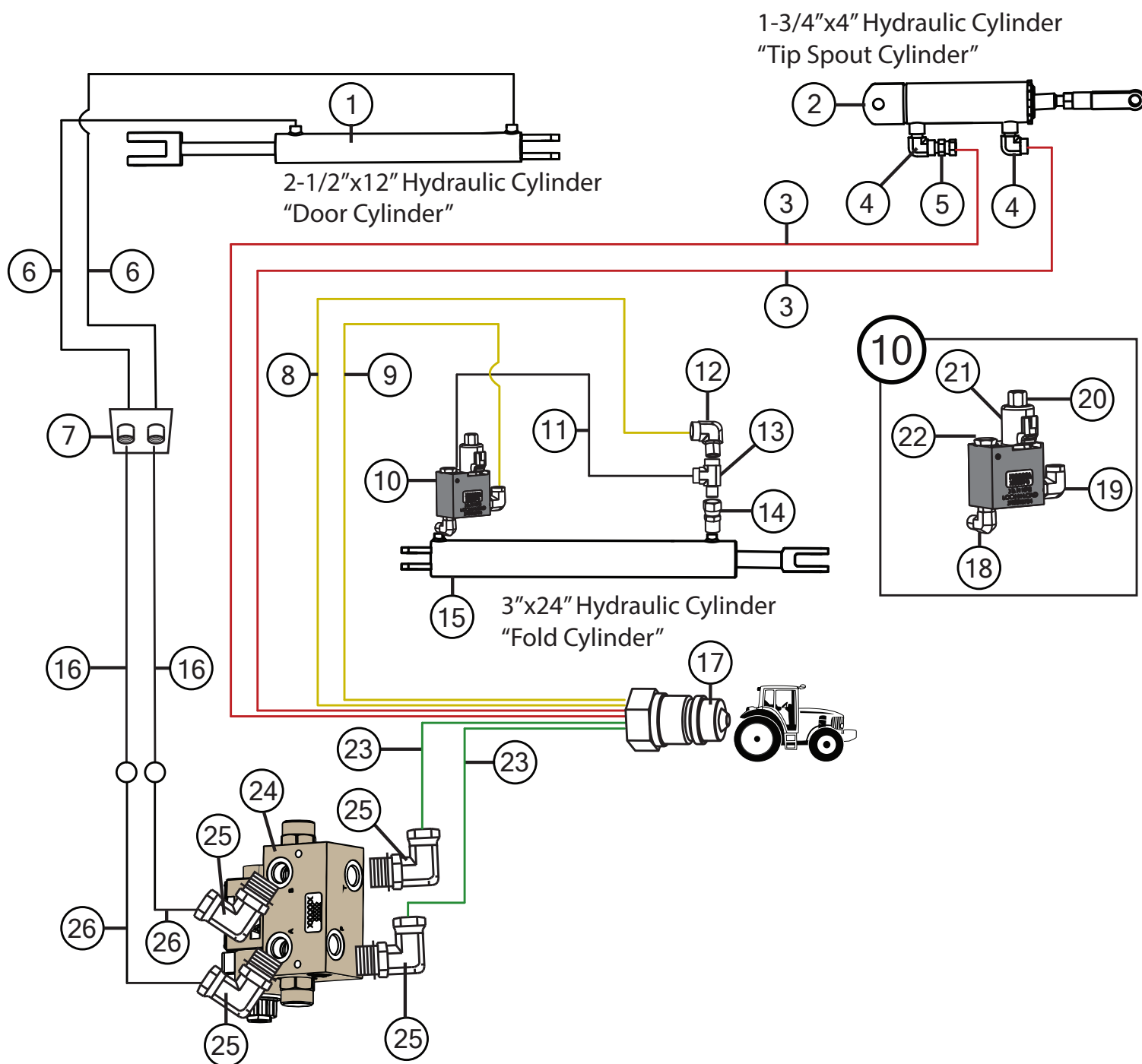
Hydraulic Hoses & Cylinders



Hydraulic Hoses & Cylinders

	Description	Part No.
1	2-1/2" x 12" Welded Hydraulic Cylinder (JD25012)	JM0074112
1	Seal Kit for 2-1/2" x 24" Hydraulic Cylinder (JD469)	JM0024891
2	1-3/4" x 4" Hydraulic Cylinder (1/2" Clevis and Tab Ends) (HC-FCS)	JM0018564
2	Seal Kit for 1-3/4" x 4" Cylinder (SKHC-FCS) (JD459)	JM0024892
3	1/4" x 478" Hydraulic Hose 478inch4M3k-4G-8MP-4G-4MP	JM0046246
4	1/4" Male NPT x 1/4" Female NPT, 90 Degree Elbow	JM0020115
5	1/4" Male NPT Swivel with .032 Orifice (Restrictor)	JM0020113
6	1/4" x 19" Hydraulic Hose 19inch4M3k-4G-6MPX-4G-6MP	JM0048197
7	3/8" Standard Coupling	JM0019562
8	1/4" x 304" Hydraulic Hose 304inch4M3k-4G-8MP-4G-6MPX	JM0046245
9	1/4" x 286" Hydraulic Hose 286inch4M3k-4G-8MP-4G-6MP	JM0047274
10	Lock & Load Assembly (1106640)	JM0048754
11	1/4" x 21" Hydraulic Hose 21inch4M3k-4G-4MP-4G-6MPX	JM0024896
12	3/8" Male NPT x 3/8" Female NPT; 90 Degree Elbow	JM0030059
13	3/8" Male NPT x 3/8" Female NPT x 3/8" Female NPT; Street T	JM0018266
14	3/8" Male NPT x 3/8" Female NPT Swivel with .062 Orifice (Restrictor)	JM0018362
15	3" x 24" x 1-1/2" Welded Cylinder (JD324)	JM0019644
15	Seal Kit 3" x 24" Cylinder (JD324-1) (JD480)	JM0037895
16	1/4" x 300" Hydraulic Hose 300"-4M3k-4G-6MPX-4G-8MP	JM0059225
17	1/4" x 236" Hydraulic Hose 236inch4M3k-4G-6MPX-4G-8MPX	JM0046664
18	1/2" Female NPT x Male Pioneer - High Flow, Cone Style	JM0018254
19	3/8" Male ORB x 3/8" Male NPT; 90 Degree Elbow	JM0047350
20	1/2" Male ORB x 3/8" Female NPT; 90 Degree Elbow	JM0047348
21	Solenoid Valve for Lock and Load (Black)	JM0026256
22	Solenoid Coil for Lock and Load (Black)	JM0026255
23	Check Valve for Lock and Load (Black)	JM0026250

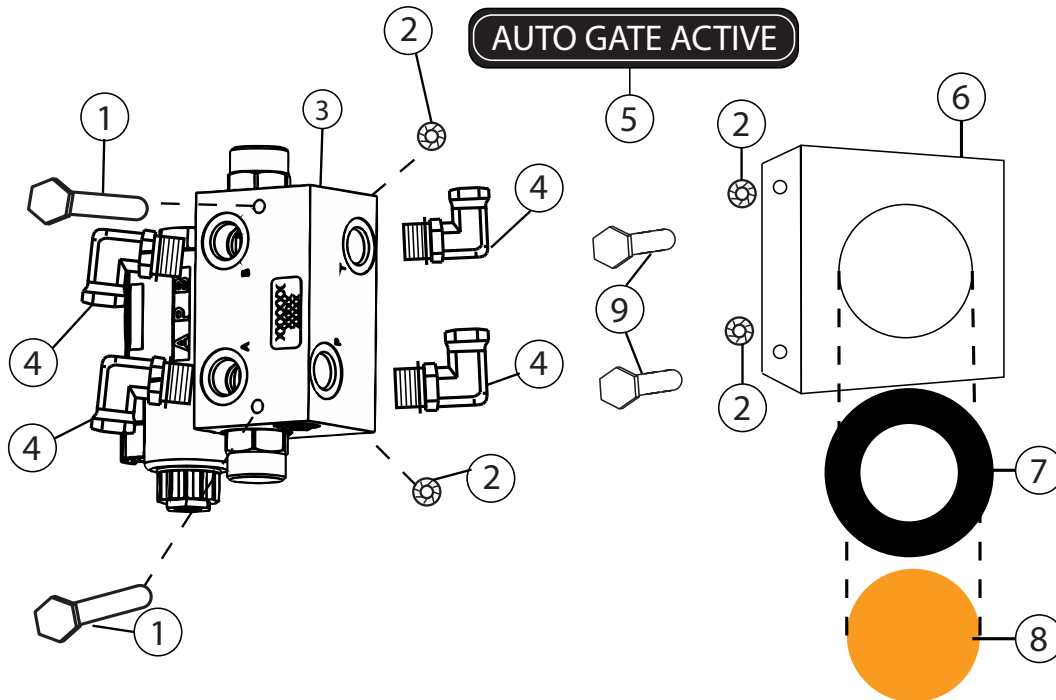
Auto-Gate Shut-Off Hydraulics



Auto-Gate Shut-Off Hydraulics

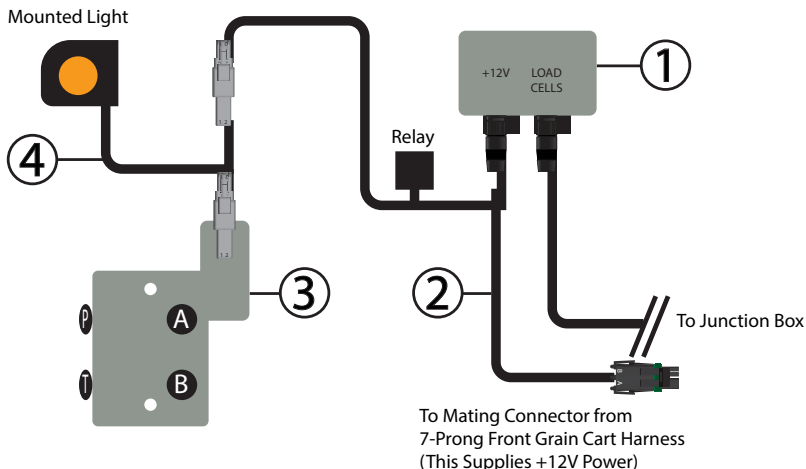
	Description	Part No.
1	2-1/2" x 12" Welded Hydraulic Cylinder (JD25012)	JM0074112
1	Seal Kit for 2-1/2" x 24" Hydraulic Cylinder (JD469)	JM0024891
2	1-3/4" x 4" Hydraulic Cylinder (1/2" Clevis and Tab Ends) (HC-FCS)	JM0018564
2	Seal Kit for 1-3/4" x 4" Cylinder (SKHC-FCS) (JD459)	JM0024892
3	1/4" x 478" Hydraulic Hose 478inch4M3k-4G-8MP-4G-4MP	JM0046246
4	1/4" Male NPT x 1/4" Female NPT, 90 Degree Elbow	JM0020115
5	1/4" Male NPT Swivel with .032 Orifice (Restrictor)	JM0020113
6	1/4" x 19" Hydraulic Hose 19inch4M3k-4G-6MPX-4G-6MP	JM0048197
7	3/8" Standard Coupling	JM0019562
8	1/4" x 304" Hydraulic Hose 304inch4M3k-4G-8MP-4G-6MPX	JM0046245
9	1/4" x 286" Hydraulic Hose 286inch4M3k-4G-8MP-4G-6MP	JM0047274
10	Lock & Load Assembly (1106640)	JM0048754
11	1/4" x 21" Hydraulic Hose 21inch4M3k-4G-4MP-4G-6MPX	JM0024896
12	3/8" Male NPT x 3/8" Female NPT; 90 Degree Elbow	JM0030059
13	3/8" Male NPT x 3/8" Female NPT x 3/8" Female NPT; Street T	JM0018266
14	3/8" Male NPT x 3/8" Female NPT Swivel with .062 Orifice (Restrictor)	JM0018362
15	3" x 24" x 1-1/2" Welded Cylinder (JD324)	JM0019644
15	Seal Kit 3" x 24" Cylinder (JD324-1) (JD480)	JM0037895
16	1/4" x 300" Hydraulic Hose 300"-4M3k-4G-6MPX-4G-8MP	JM0059225
17	1/2" Female NPT x Male Pioneer - High Flow, Cone Style	JM0018254
18	3/8" Male ORB x 3/8" Male NPT; 90 Degree Elbow	JM0047350
19	1/2" Male ORB x 3/8" Female NPT; 90 Degree Elbow	JM0047348
20	Solenoid Valve for Lock and Load (Black)	JM0026256
21	Solenoid Coil for Lock and Load (Black)	JM0026255
22	Check Valve for Lock and Load (Black)	JM0026250
23	1/4" x 236" Hydraulic Hose 236inch4M3k-4G-6MPX-4G-8MPX	JM0046664
24	Auto-Gate Hydraulic Valve	JM0026247
25	1/2" Male ORB x 3/8" Female NPT Swivel; 90 Degree Elbow	JM0027285
26	1/4" x 42-1/2" Hydraulic Hose 42.5inch4M3k-4G-6MP-4G-6MP	JM0046650

Auto-Gate Shut-Off Assembly



Description	Part No.
1 1/4"-20 x 3-1/2" Gr5 Z Hex Bolt	JM0046621
2 1/4"-20 Gr5 Z SF Hex Nut	JM0001630
3 Auto-Gate Hydraulic Valve	JM0026247
4 1/2" Male ORB x 3/8" Female NPT Swivel; 90 Degree Elbow	JM0027285
5 Auto Gate Active Decal	JM0046612
6 3-1/2" Round LED Mount	JM0034956
7 3-1/2" Round LED Grommet	JM0001902
8 3-1/2" Amber Round LED Light	JM0001895
9 1/4"-20 x 3/4" Gr5 Z SF Hex Bolt	JM0001642

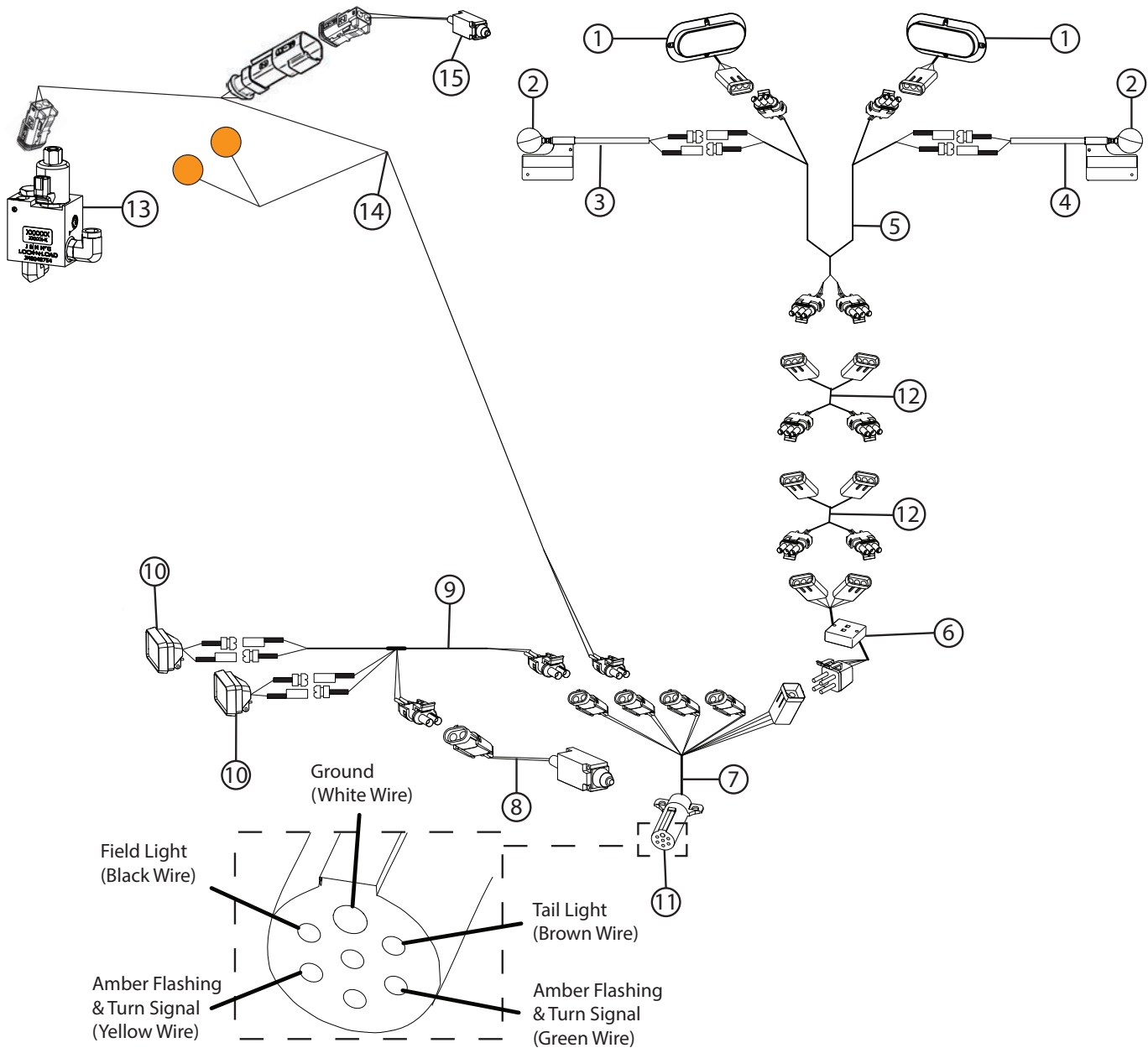
Auto-Gate Shut-Off Wiring Schematic



Description	Part No.
1 GT 560 Digi-Star Scale Display Monitor	JM0044177
2 Auto-Gate Harness (Standard GT 560)	JM0026813
3 Auto-Gate Hydraulic Valve	JM0026247
4 Auto Gate Light Harness (LED Light "Y" Cable)	JM0046624

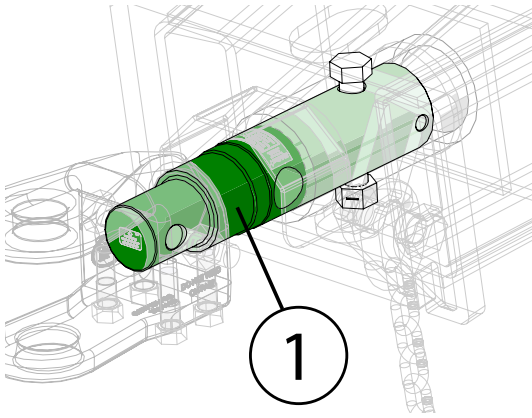
Note: Mount the hydraulic valve after all the hoses are attached but not tightened. This will ensure the hoses will reach.

Lights and Wiring



Description	Part No.
1 Red Oval LED Tail Light	JM0034389
2 LED Amber Light (Circular)	JM0018819
3 Extendable Amber Light Assembly (Left Side)	JM0018817
4 Extendable Amber Light Assembly (Right Side)	JM0018826
5 Wiring Harness, Rear Half of Grain Cart	JM0020437
6 Light Enhancer and Adapter Kit (3 Wires)	JM0010566
7 Main Harness with 7-Prong Connector End for Grain Cart	JM0020439
8 Limit Switch for Field Light (ME-8111)	JM0036040
9 Field Light Wire Harness	JM0020438
10 LED Field Light with Bullet Connector	JM0050949
11 7-Prong Connector	JM0010528
12 85" Extension Cord for Lights	JM0043127
13 Lock and Load Assembly	JM0048754
14 Grain Cart Lock and Load Harness	JM0044755
15 Limit Switch for Lock and Load - 72" Long Cable	JM0046717

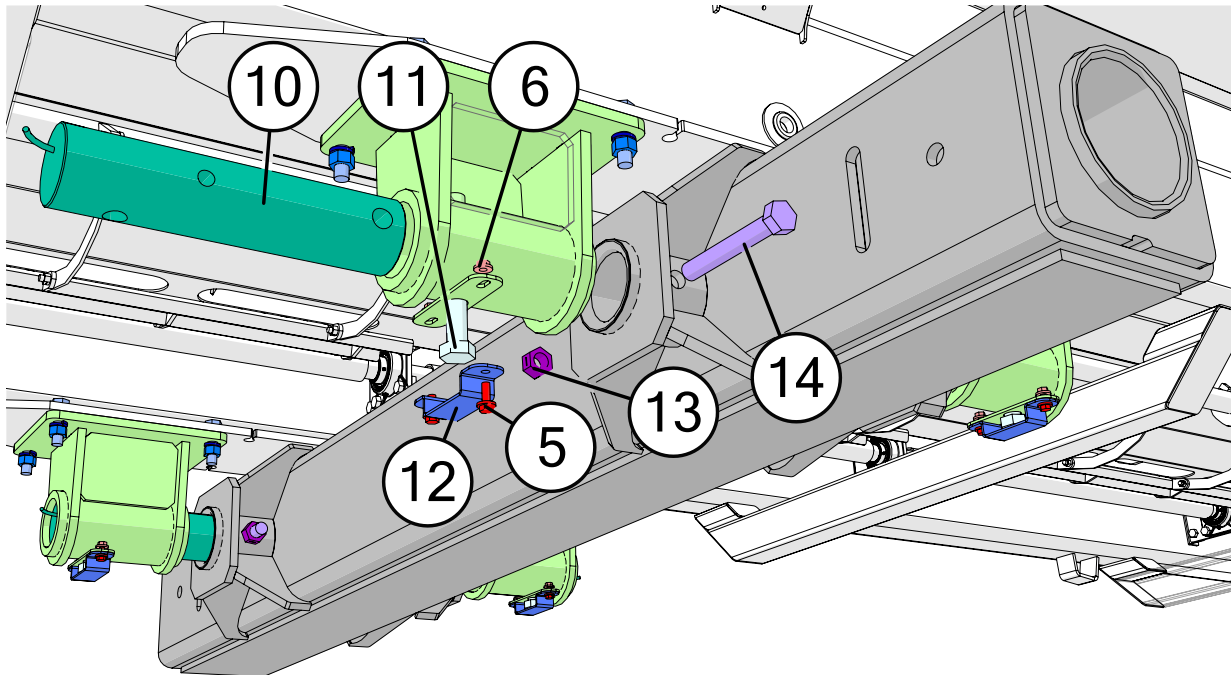
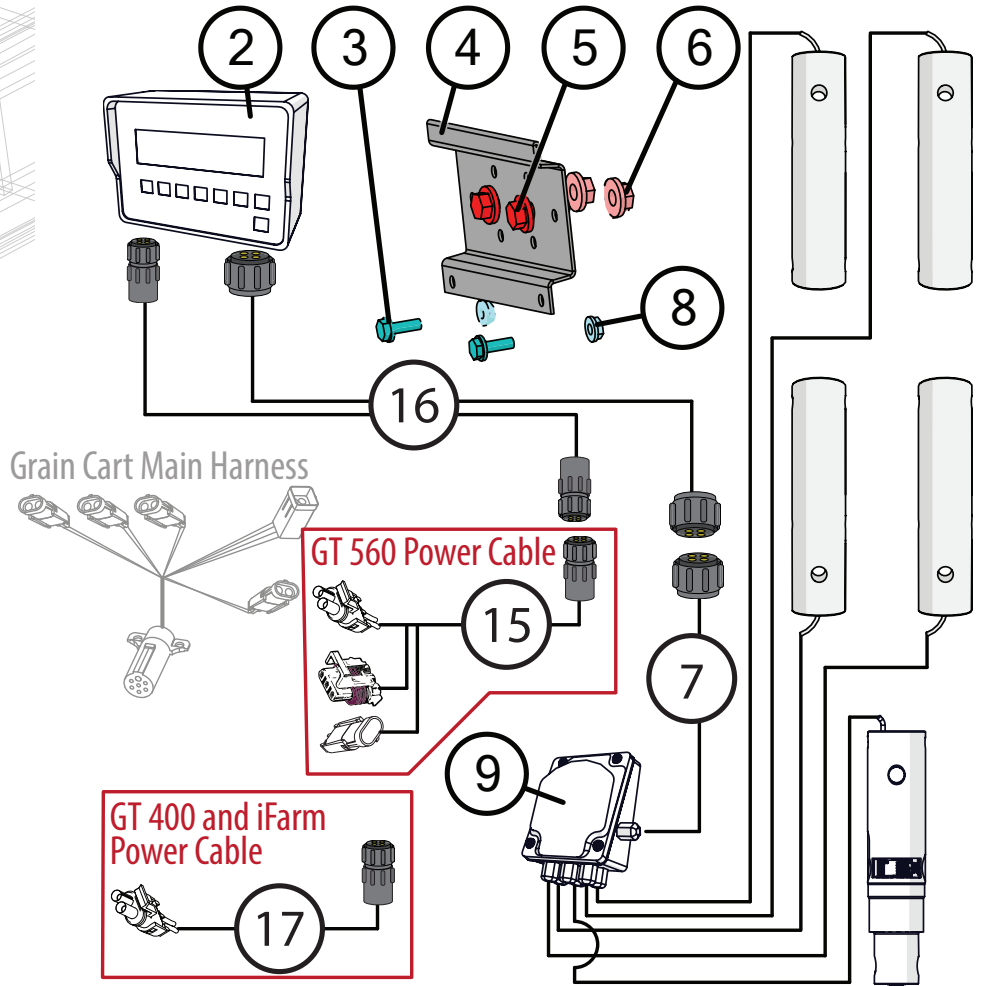
5-Point Scale System



GT 400



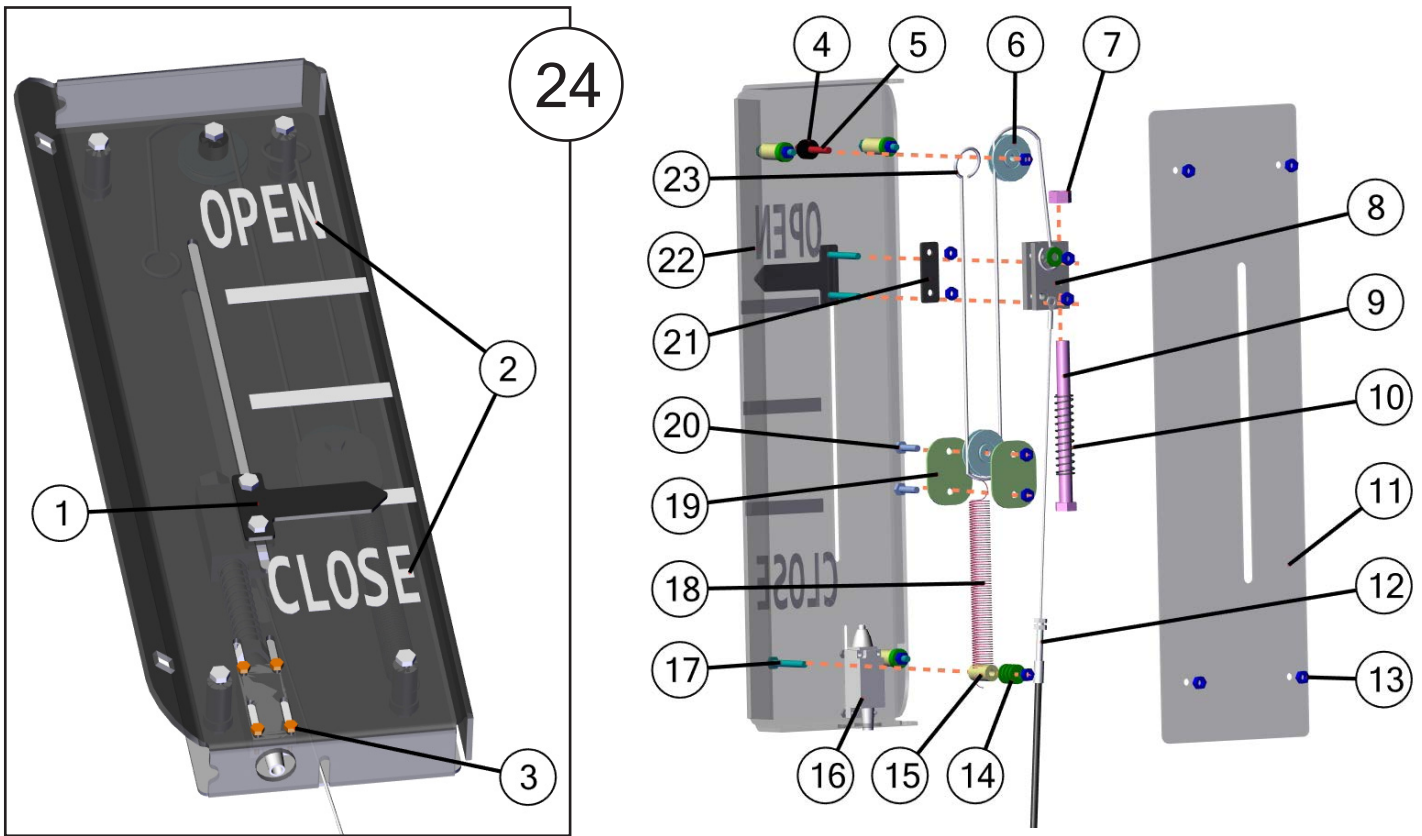
GT 560



5-Point Scale System

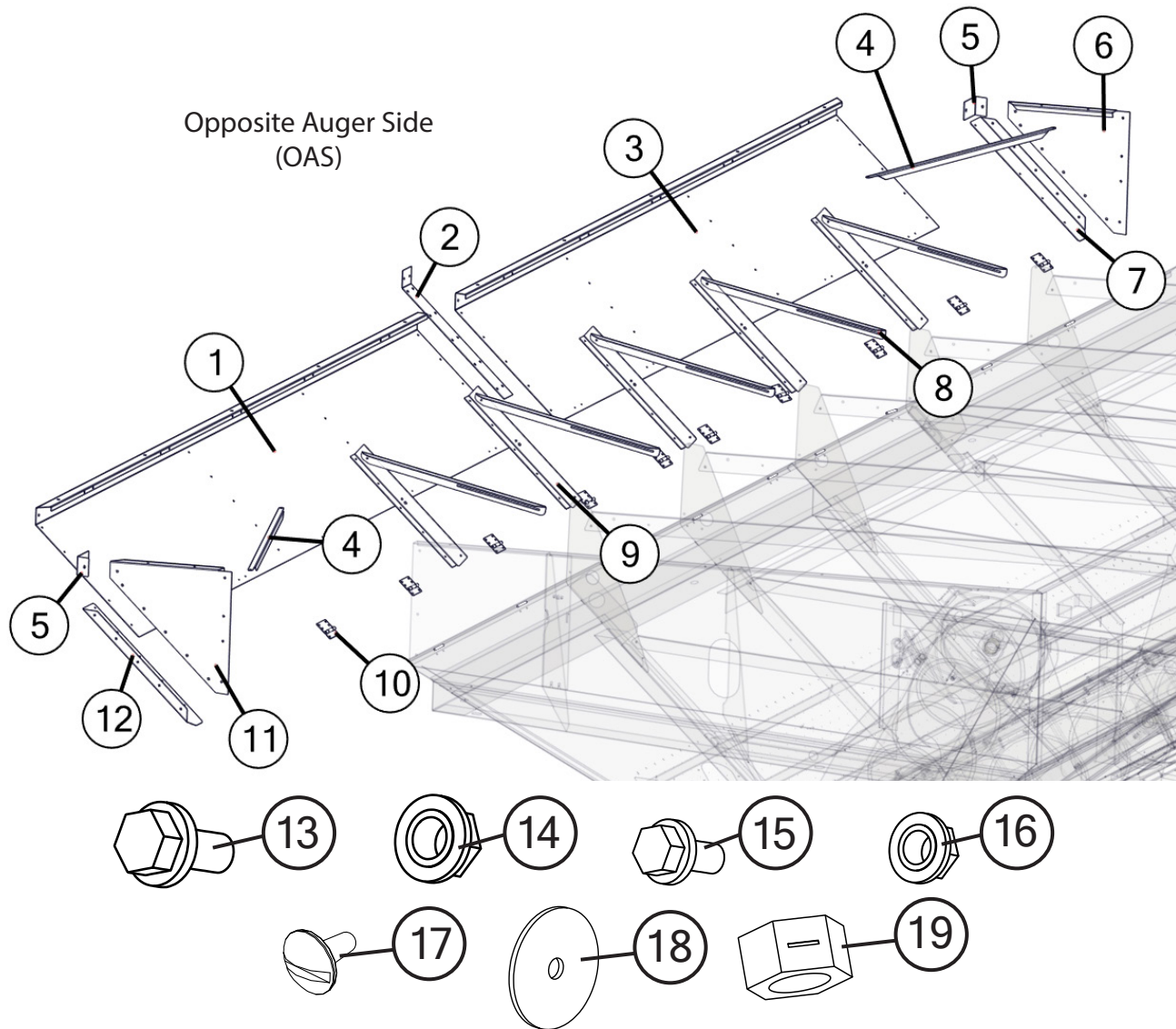
	Description	Part No.
1	3-3/4" Digi-Star Scale Bar with 2-7/8" Load End	JM0062691
2	GT 400 Digi-Star Scale Display Monitor	JM0019040
2	GT 560 Digi-Star Scale Display Monitor	JM0044177
3	1/4"-20 x 3/4" Gr5 Z Hex Bolt	JM0001507
4	GT 560 Scale Monitor Display Bracket	JM0046976
4	GT 400 Scale Monitor Display Bracket	JM0000361
5	3/8"-16 x 1" Gr5 Z SF Hex Bolt	JM0002092
6	3/8"-16 Gr5 Z SF Hex Nut	JM0002152
7	8' Cable from J-Box to Indicator (Digi-Star)	JM0047238
8	1/4"-20 Gr5 Z SF Hex Nut	JM0001630
9	Digi-Star 6-Point Junction Box (JB-5)	JM0019038
10	3-3/4" Weigh Bar, Digi-Star	JM0048559
11	1"-8 x 8" Gr8 YZ Hex Bolt	JM0042652
12	Scale Bolt Retainer Bracket	JM0042616
13	1"-8 Gr2 Z Centerlock Hex Nut	JM0002149
14	1"-8 x 7" Gr8 YZ Hex Bolt	JM0042653
15	Power Cable for GT 560 Indicator	JM0078634
16	30' Extension Cable Kit (Load Cell and Power) (ECI-3)	JM0041218
17	iFarm Standard Power Cable - For All iFarm units (18" 4pin-2pin WP)	JM0041060
18	Flash Drive Memory Stick for Digi-Star GT 560 (114991)	JM0025819

Gate Indicator Display Assembly



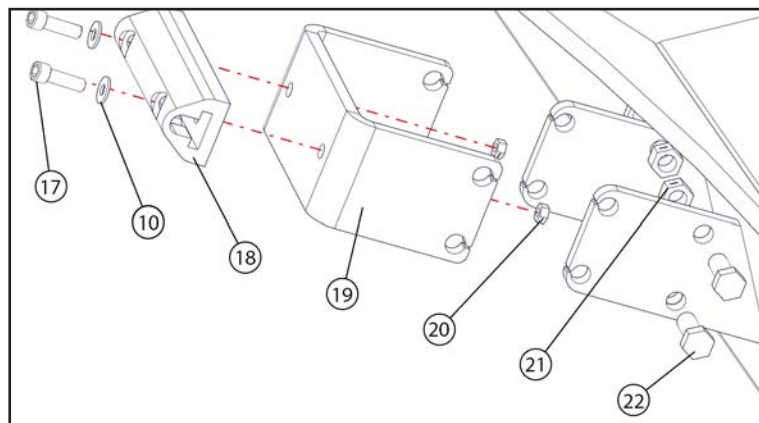
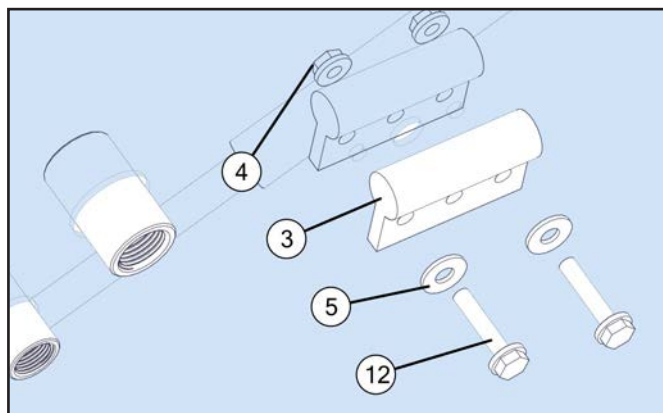
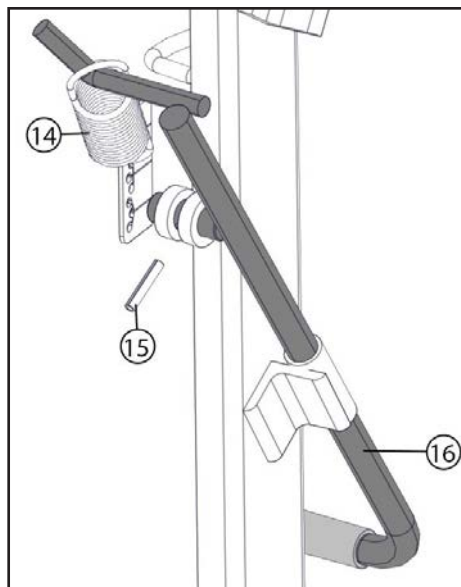
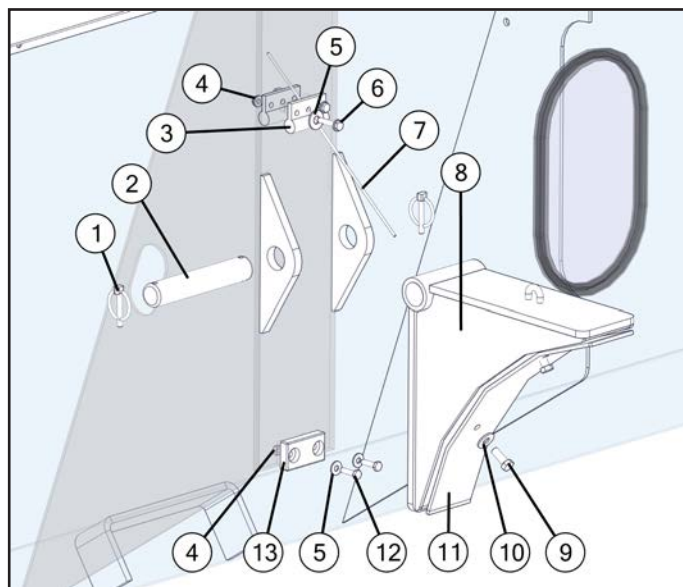
	Description	Part No.
1	Indicator Slide - T Shaped	JM0041671
2	Open and Close Decal for 32 Series Indicator	JM0043138
3	#6-32 x 3/4" Hex Bolt	JM0048557
4	9/32" ID, 3/4 OD x 7/16" Plastic Spacer for 32 Series Indicator Box	JM0048556
5	1/4"-20 x 2" Gr5 Z Hex Bolt	JM0048072
6	1-5/8" Idler Pulley (Long Spring Return)	JM0012970
7	1/2"-13 Gr2 Z Centerlock Hex Nut	JM0001511
8	Drag Cart Lock and Load Switch Trigger	JM0046358
9	1/2"-13 x 6" Gr5 Z Hex Bolt	JM0016679
10	0.72OD, 3" Free Length, 0.059 Wire Compression Spring	JM0045011
11	Indicator Plate on Conduit - Lock and Load Switch	JM0046367
12	20'2" Indicator Rod Cable with Nuts and Washers Included	JM0048555
13	1/4"-20 Gr2 Z Centerlock Hex Nut	JM0001505
14	1/4" ID, 3/4" OD Z Flat Washer	JM0003090
15	1/4" ID, 5/8" OD x 1-1/8" Long Nylon Bolt Spacer	JM0046481
16	Limit Switch for Lock and Load - 72" Long Cable	JM0046717
17	1/4"-20 x 2" Gr5 Z Hex Bolt	JM0001591
18	Extension Spring 7.562 x 1.312 OD x .135 Wire for 32 Series Indicator	JM0078305
19	Indicator Mechanism - Pulley Rack Plate	JM0041667
20	1/4"-20 x 1" Gr5 Z Hex Bolt	JM0002095
21	Indicator Slide - Backing Plate	JM0042207
22	Indicator Plate Bolted to Conduit	JM0046375
23	26" Indicator Gate Cable	JM0048275
24	32 Series - Indicator Display Assembly	JM0046362

Sideboards



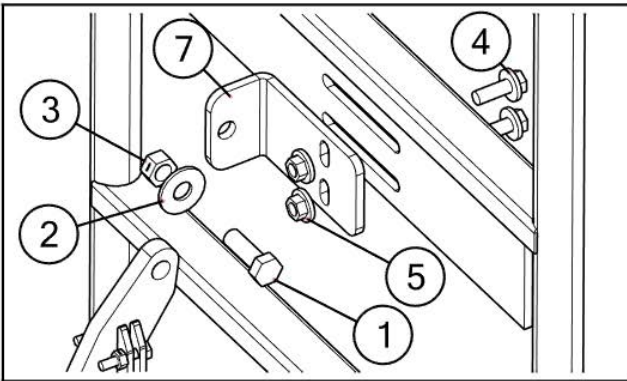
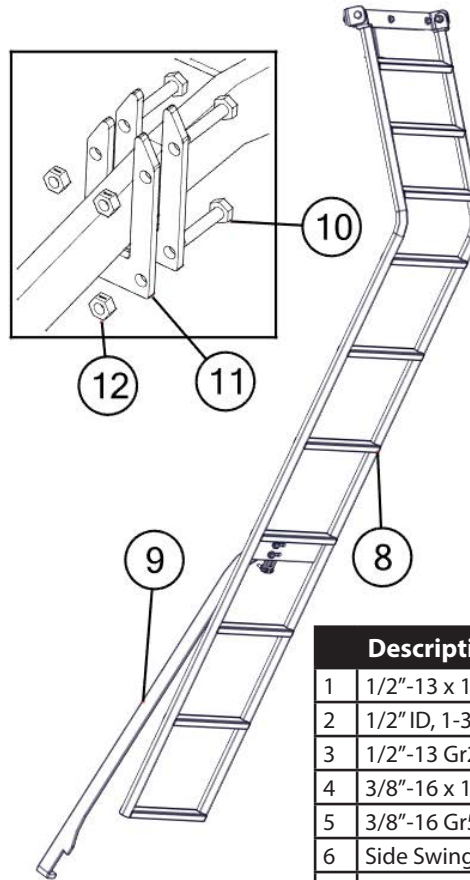
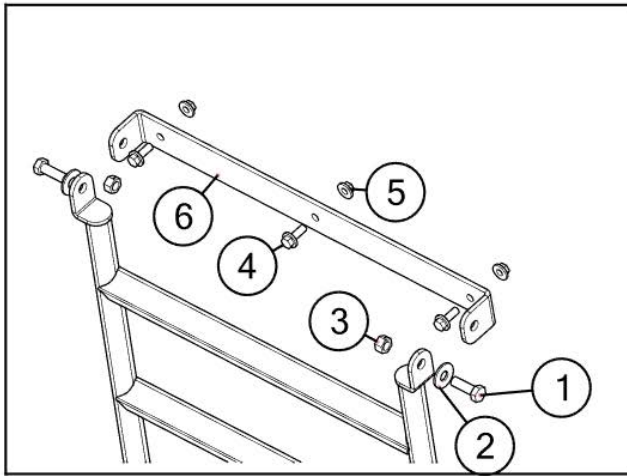
	Description	Part No.
1	Front Leamer Board - 32 Series (177")	JM0042640
2	Low Sideboard Small Splice Plate (34-3/8")	JM0042603
3	Back Leamer Board - 32 Series (177")	JM0042375
4	Corner Sideboard Bracing - 32 Series Leamer	JM0043221
5	Small Corner - 32 Series Leamer (7-5/8" x 3-13/16")	JM0042550
6	Back Triangle Board - 32 Series Leamer	JM0042540
7	Back Leamer Corner Brace - 32 Series (33")	JM0042545
8	Main Brace - 32 Series Leamer (41-15/16")	JM0042526
9	Wall Angle Brace - 32 Series Leamer (31-1/4")	JM0042508
10	4" Leamer Hinge	JM0025638
11	Front Triangle Board - 32 Series Leamer	JM0042601
12	Front Leamer Corner - 32 Series (33")	JM0042605
13	3/8"-16 x 1" Gr5 Z SF Hex Bolt	JM0002092
14	3/8"-16 Gr5 Z SF Hex Nut	JM0002152
15	5/16"-18 x 5/8" Gr5 Z SF Hex Bolt	JM0049017
16	5/16"-18 Gr5 Z SF Hex Nut	JM0014049
17	3/8"-16 x 1" Gr5 Z Pan Head Bolt	JM0002892
18	3/8" ID, 1" OD Z Flat Washer	JM0003061
19	3/8"-16 Gr2 Z Centerlock Hex Nut	JM0001512

Auger Rest Assembly



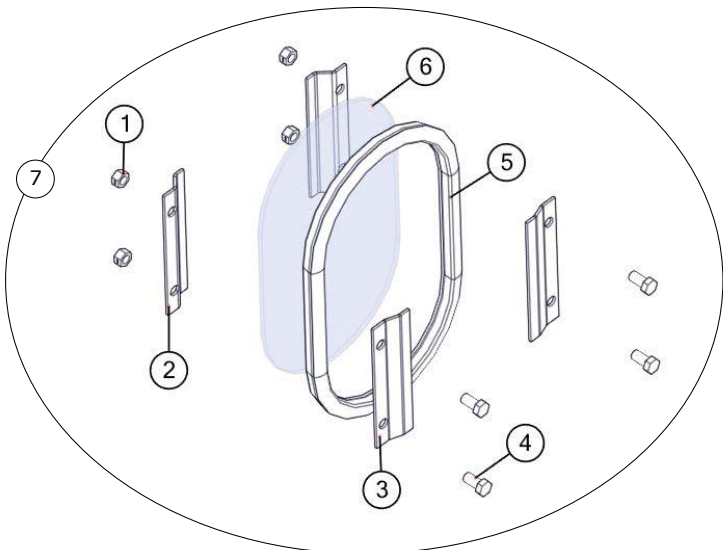
Description	Part No.
1 1/4" Diameter Snap Ring	JM0001870
2 Flip Up Auger Rest Pin (6-7/8" x 1-1/4")	JM0028218
3 Cable Guide for X-tended Reach Auger Rest	JM0046922
4 1/4"-20 Gr2 Z Centerlock Hex Nut	JM0001505
5 1/4" ID, 3/4" OD Z Flat Washer	JM0003090
6 1/4"-20 x 2" Gr5 Z Hex Bolt	JM0001591
7 1/8" Auger Rest Cable	JM0037202
8 Flip Up Auger Rest - Long Fold	JM0020538
9 3/8"-16 x 1" Gr5 Z Hex Bolt	JM0001592
10 3/8" ID, 1" OD Z Flat Washer	JM0003061
11 3" x 17-1/2" Auger Rest Guide Plate UHMW	JM0024456
12 1/4"-20 x 1-1/2" Gr5 Z Hex Bolt	JM0002447
13 2-3/4" x 1-1/2" Rest Pad	JM0020802
14 Extension Spring 5-3/8" OAL x 1-1/2" OD x .148" Wire, Zinc Plated	JM0024976
15 1/4" x 1-3/8" Roll Pin	JM0009896
16 Flip Up Auger - Throw Handle	JM0021843
17 3/8"-16 x 1-1/4" Socket Head Cap Screw	JM0047163
18 6" x 2" Storage Position Auger Rest Triangle Pad	JM0037644
19 Storage Position Auger Rest	JM0020787
20 3/8"-16 Gr2 Z Centerlock Hex Nut	JM0001512
21 1/2"-13 Gr2 Z Centerlock Hex Nut	JM0001511
22 1/2"-13 x 1-1/2" Gr5 Z Hex Bolt	JM0002100

Ladder Assembly



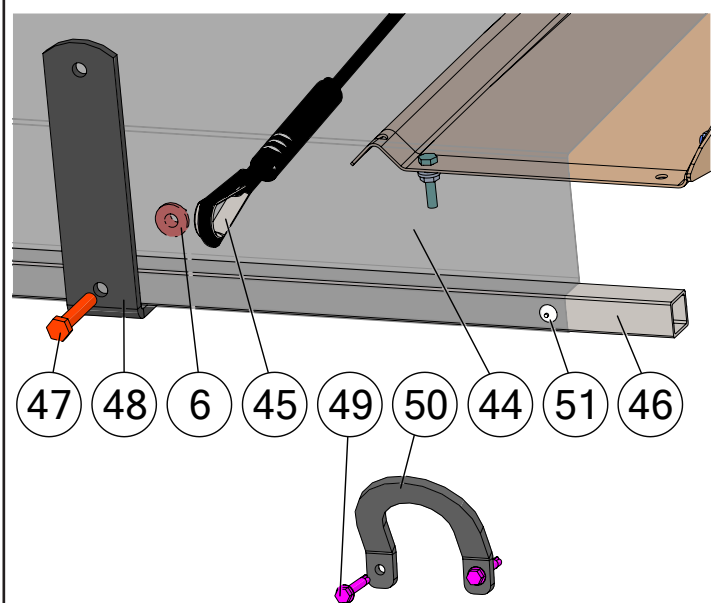
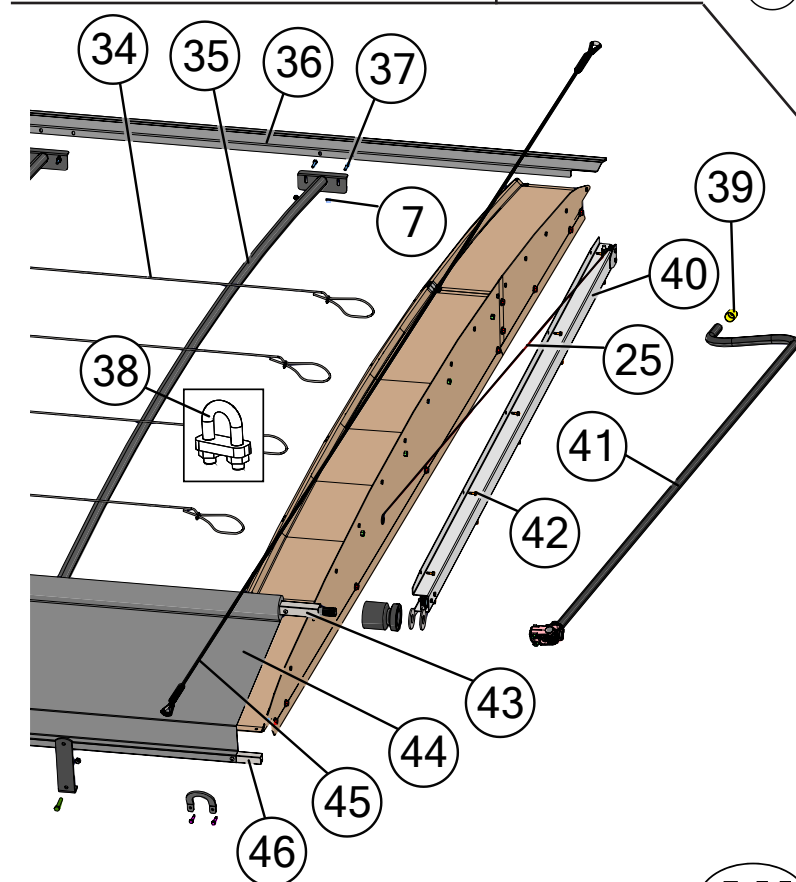
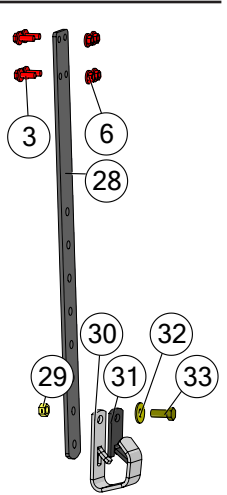
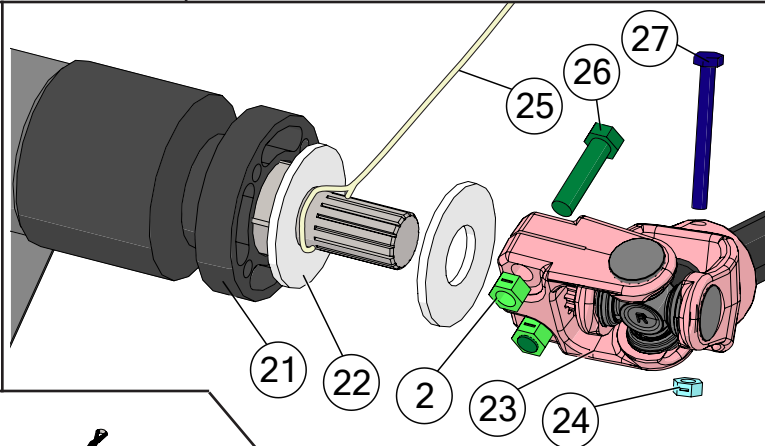
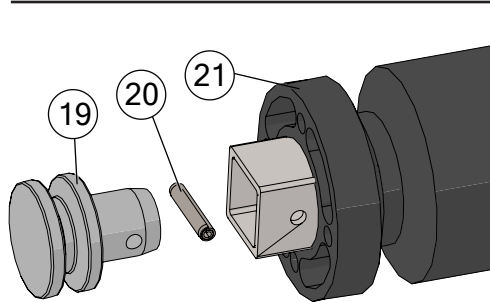
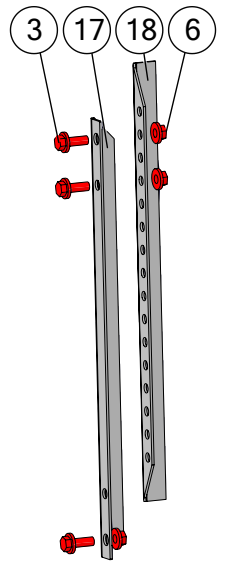
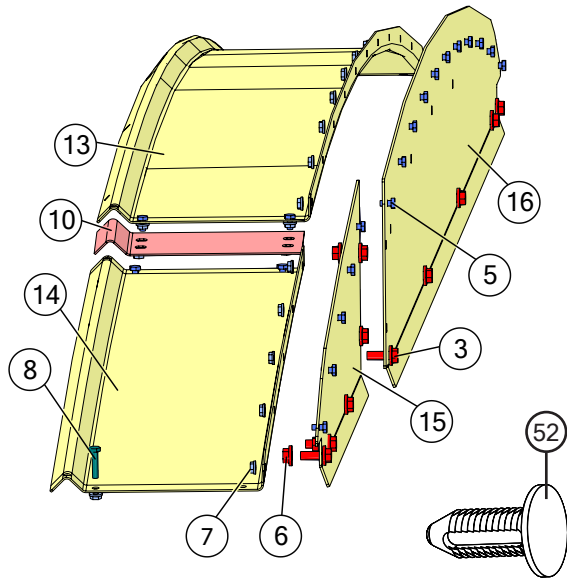
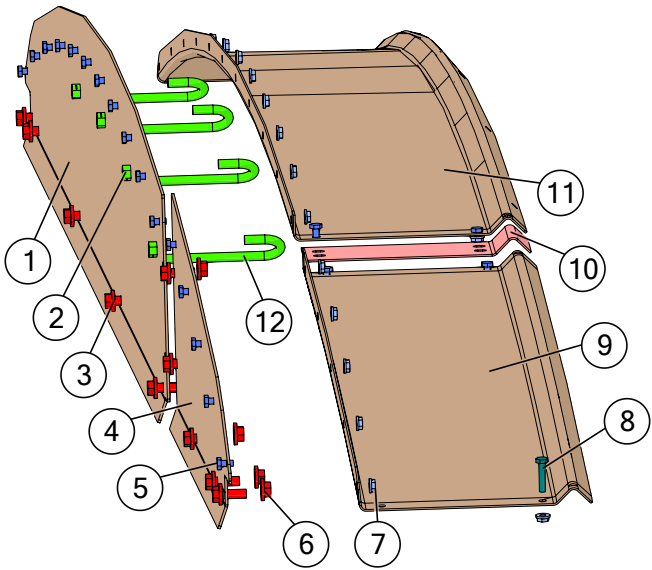
Description		Part No.
1	1/2"-13 x 1-1/2" Gr5 Z Hex Bolt	JM0002100
2	1/2" ID, 1-3/8" OD Z Flat Washer	JM0003082
3	1/2"-13 Gr2 Z Centerlock Hex Nut	JM0001511
4	3/8"-16 x 1" Gr5 Z SF Hex Bolt	JM0002092
5	3/8"-16 Gr5 Z SF Hex Nut	JM0002152
6	Side Swing Ladder Mount Bracket	JM0012865
7	Swing Out Ladder Adjustable Tab	JM0020977
8	32 Series Ladder	JM0038740
9	Ladder Support Leg	JM0012926
10	1/4"-20 x 1-1/4" Gr5 Z Hex Bolt	JM0016673
11	Ladder Guide - 3/16" Thick	JM0021947
12	1/4"-20 Gr2 Z Centerlock Hex Nut	JM0001505

Inspection Windows



Description		Part No.
1	3/8"-16 Gr2 Z Centerlock Hex Nut	JM0001512
2	Inside Window Clip - Deep	JM0000253
3	Outside Window Clip - Shallow	JM0000256
4	3/8"-16 x 3/4" Gr5 Z Hex Bolt	JM0001663
5	Window Seal 3/4" S' Strip	JM0000254
6	Standard Inspection Window	JM0000255
7	Inspection Window Kit	JM0025752

Roll Tarp Assembly

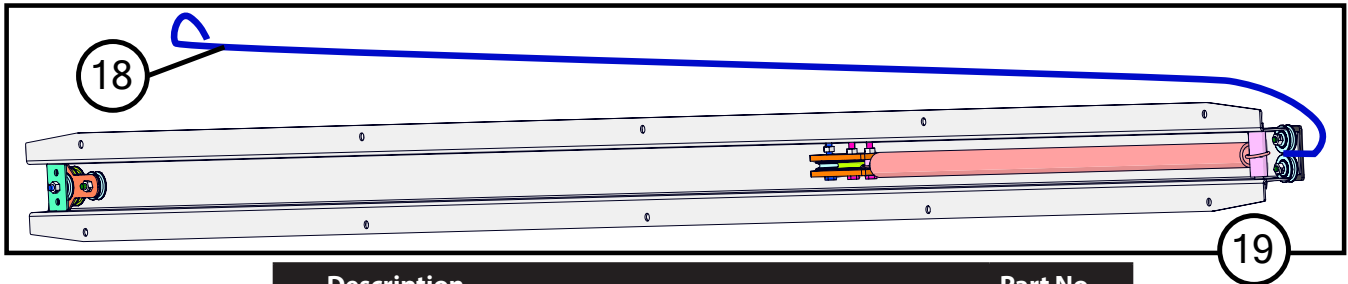
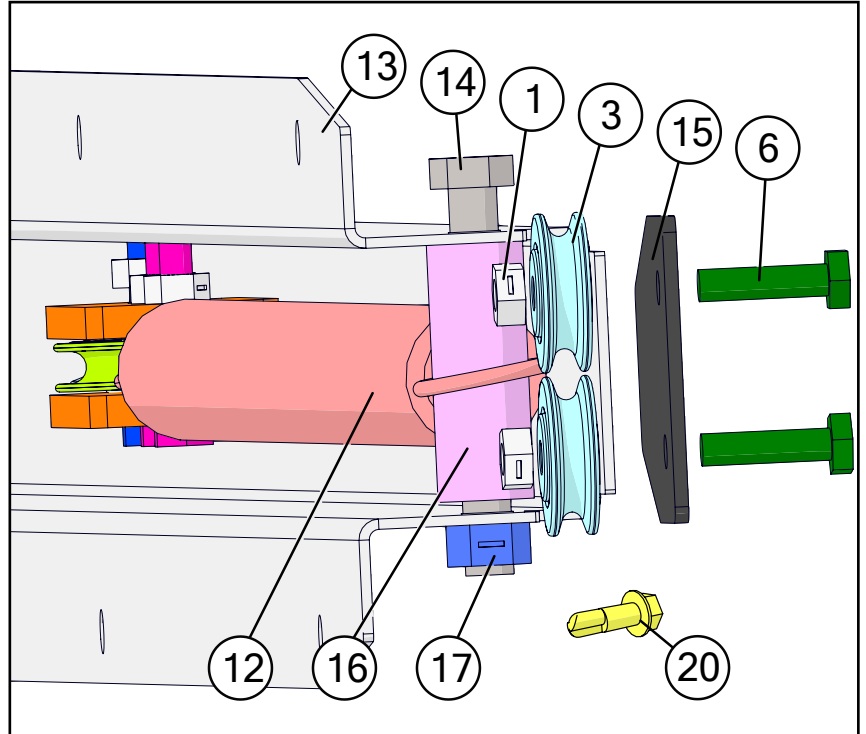
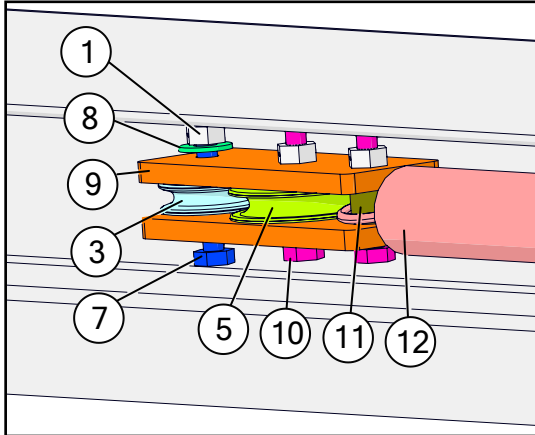
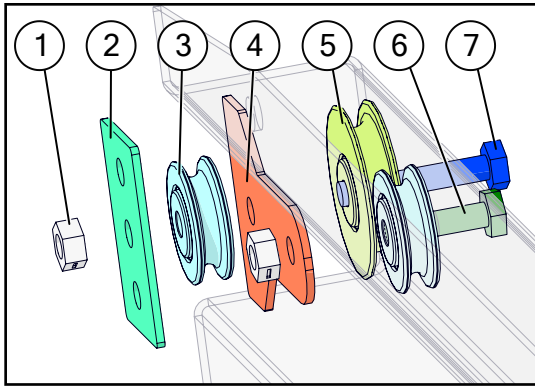


Roll Tarp Assembly

	Description	Part No.
1	Rear Endcap Plate for Glide Right - Leaner Large 121-5/8"	JM0045319
2	3/8"-16 Gr2 Z Centerlock Hex Nut	JM0001512
3	3/8"-16 x 1" Gr5 Z SF Hex Bolt	JM0002092
4	Rear Endcap Plate for Glide Right - Leaner Small 45-5/8"	JM0045323
5	1/4"-20 x 1/2" Gr5 Z Hex Bolt	JM0001481
6	3/8"-16 Gr5 Z SF Hex Nut	JM0002152
7	1/4"-20 Gr5 Z SF Hex Nut	JM0001630
8	1/4"-20 x 1-1/4" Gr5 Z Hex Bolt	JM0016673
9	Rear Arched Top Endcap for Glide Right - Leaner Small 45"	JM0045291
10	Endcap Splice for Leaner	JM0007264
11	Rear Arched Top Endcap for Glide Right - Leaner Large 121"	JM0045289
12	3/8"-16 Gr5 Z J-Bolt (384JB)	JM0001519
13	Front Arched Top Endcap for Glide Right - Leaner Large 121"	JM0050120
14	Front Arched Top Endcap for Glide Right - Leaner Small 45"	JM0050121
15	Front Endcap Plate for Glide Right - Leaner Small 45-5/8"	JM0045322
16	Front Endcap Plate for Glide Right - Leaner Large 121-5/8"	JM0045320
17	Endcap Prop - Lower 19" (ABS-2)	JM0000179
17	Endcap Prop - Lower 27" (ABS-2L)	JM0021403
18	Endcap Prop - Upper 19"	JM0021404
19	Spool End for Roll Tube	JM0002449
20	1/4" x 1-1/4" HD Spiro Roll Pin	JM0046782
21	Roll Tarp Guide Roller	JM0038446
22	1" USS Flat Washer	JM0003063
23	Universal Joint - Roll Tarp (SUJ-1)	JM0001517
24	1/4"-20 Gr2 Z Centerlock Hex Nut	JM0001505
25	Spring Return Cable (Grain Carts)	JM0012981
26	3/8"-16 x 1-1/2" Gr5 Z Hex Bolt	JM0001659
27	1/4"-20 x 2-1/2" Gr5 Z Hex Bolt	JM0001506
28	1/4" x 2" x 29" Bar for Crank Holder (1000 Bushel Carts and Higher (ABCH-1EL))	JM0000164
29	1/2"-13 Gr2 Z Centerlock Hex Nut	JM0001511
30	Crank Holder (Zinc Plated) (CH-1)	JM0002967
31	Roll Tarp - Handle Hanger Rubber Flap	JM0002551
32	1/2" ID, 1-3/8" OD Z Flat Washer	JM0003082
33	1/2"-13 x 1-1/4" Gr5 Z Hex Bolt	JM0001513
34	3/16" Cable x 359" (1732, 2032, 2332)	JM0048576
35	160" Arched Tarp Bows (Leaner)	JM0021405
36	Tightening Lip 179-7/8" Front (1732, 2032, 2332)	JM0042760
36	Tightening Lip 179-7/8" Rear (1732, 2032, 2332)	JM0042848
37	1/4"-20 x 1" Gr5 Z Hex Bolt	JM0002095
38	1/8" Cable Clamp	JM0001514
39	S-Cap Yellow - 1.062 ID x 1-1/2" x 1/16	JM0018963
40	Spring Return Assembly Complete (Grain Cart)	JM0002911
41	12' Crank w/ Splined U-Joint (CUJ-1LN)	JM0019888
42	1/4" x 3/4" Self Tapping Screw	JM0001570
43	1-1/4" x 364" Roll Tube for Glide Right (1732, 2032, 2332)	JM0048613
44	29'8" x 15'6" Tarp with 15 Rivets (1732, 2032, 2332)	JM0048562
45	Tarp Rope Assembly 16'8" Glide Right Leaner	JM0048670
46	1" x 360" Square Tie-Down Tube (1732, 2032, 2332)	JM0048617
47	3/8"-16 x 2" Gr5 Z Hex Bolt	JM0001510
48	Tarp Stop Bracket (TSB-1)	JM0000187
49	1/4" x 1-1/2" Self Tapping Screw	JM0001571
50	Tarp Rope Bracket	JM0047700
51	1/4" Tarp Rivet	JM0001518
52	3/8" Ribbed Push in Rivet	JM0037396



Spring Return Assembly



	Description	Part No.
1	1/4"-20 Gr2 Z Centerlock Hex Nut	JM0001505
2	Aluminum Spacer for Spring Return (1-3/8" x 2-3/16") Rectangular	JM0002445
3	1-1/4" Idler Pulley (1/4" ID)	JM0002439
4	Large Spring Return Pulley Spacer (2 Holes)	JM0018897
5	1-5/8" Idler Pully (Long Spring Return)	JM0012970
6	1/4"-20 x 1" Gr5 Z Hex Bolt	JM0002095
7	1/4"-20 x 1-1/2" Gr5 Z Hex Bolt	JM0002447
8	1/4" ID, 3/4" OD Z Flat Washer	JM0003090
9	Rectangular Plastic Spacer for Spring Return	JM0012973
10	1/4"-20 x 1-1/4" Gr5 Z Hex Bolt	JM0016673
11	2" Black Plastic Spacer (1/4" ID x 1/2" OD)	JM0002442
12	Spring Return Spring	JM0000207
13	Grain Cart Spring Return Housing	JM0012974
14	3/8"-16 x 3" Gr5 Z Hex Bolt	JM0001666
15	Spring Return Stiffening Plate	JM0034548
16	3/4" x 2" Plastic Spacer	JM0002444
17	3/8"-16 Gr2 Z Centerlock Hex Nut	JM0001512
18	Spring Return Cable (Grain Carts)	JM0012981
19	Spring Return Assembly (Grain Cart)	JM0002911
20	1/4" x 3/4" Self Tapping Screw	JM0001570

