

OPERATORS MANUAL



1522
1412
1312
1222
1122
1112
1012
812

GRAIN CART



Rev. 1.5.2018

J. & M. Mfg. Co., Inc.
284 Railroad Street - P.O. Box 547
Fort Recovery, OH 45846
Ph: (419) 375-2376 Fax: (419) 375-2708
www.jm-inc.com

Stance

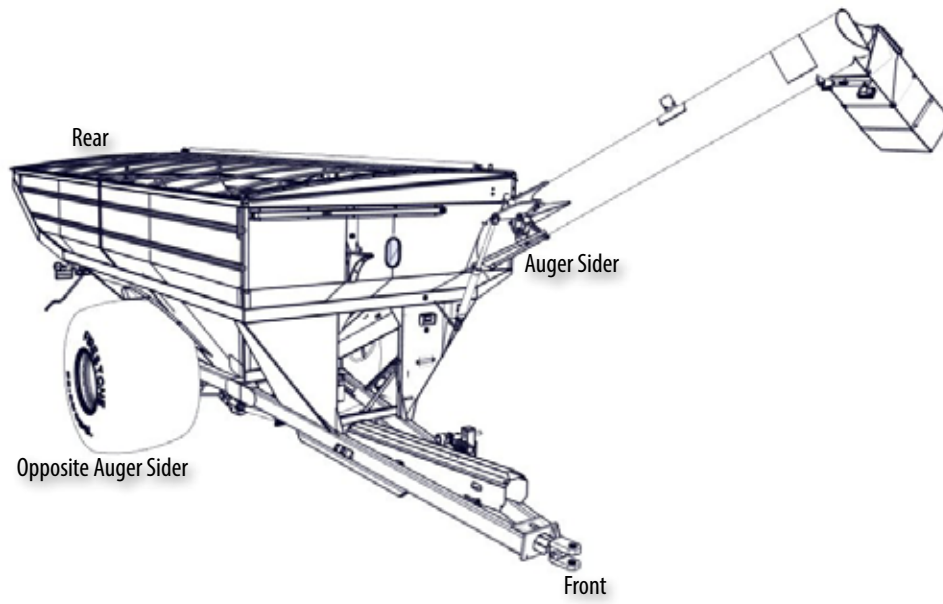


Table Of Contents

| | |
|------------|-----------------------------------|
| 4 | To The Dealer |
| 5 | General Information |
| 6-7..... | Specifications |
| 8 | Bolt Torque Chart |
| 9-11..... | Safety |
| 12 | Initial Operation & Maintenance |
| 13 | Operating Instructions |
| 14 | Walking Tandem Dual Row Spacing |
| 15 | Lubrication Schedule |
| 16 | Troubleshooting |
| 17 | Adjusting Upper & Lower Flighting |
| 18 | Storage Preparation |
| 19-45..... | Repair Parts |

To The Dealer

Read manual instructions and safety rules. Make sure all items on the Dealer's Pre-Delivery and Delivery Check Lists are completed before releasing equipment to the owner.

The dealer must complete the Warranty Registration found on the Dealer Portal website located at dealer.jm-inc.com. and return it to J. & M. Mfg. Co., Inc. at the address indicated on the form. Warranty claims will be denied if the Warranty Registration has not been submitted.

EXPRESS WARRANTY:

J. & M. Mfg. Co. Inc. warrants against defects in construction or materials for a period of ONE year. We reserve the right to inspect and decide whether material or construction was faulty or whether abuse or accident voids our guarantee.

Warranty service must be performed by a dealer or service center authorized by J. & M. Mfg. Co., Inc. to sell and/or service the type of product involved, which will use only new or remanufactured parts or components furnished by J. & M. Mfg. Co., Inc. Warranty service will be performed without charge to the purchaser for parts or labor based on the Warranty Labor Times schedule. Under no circumstance will allowable labor times extend beyond the maximum hours indicated in the Warranty Labor Times schedule for each warranty procedure. The purchaser will be responsible, however, for any service call and/or transportation of the product to and from the dealer or service center's place of business, for any premium charged for overtime labor requested by the purchaser, and for any service and/or maintenance not directly related to any defect covered under the warranty. Costs associated with equipment rental, product down time, or product disposal are not warrantable and will not be accepted under any circumstance.

Each warranty term begins on the date of product delivery to the purchaser. Under no circumstance will warranty be approved unless (i) the product warranty registration card has been properly completed and submitted to the equipment manufacturer, and (ii) a warranty authorization number has been issued by the equipment manufacturer. This Warranty is effective only if the warranty registration card is returned within 30 days of purchase.

This warranty does not cover a component which fails, malfunctions or is damaged as a result of (i) improper modification or repair, (ii) accident, abuse or improper use, (iii) improper or insufficient maintenance, or (iv) normal wear or tear. This warranty does not cover products that are previously owned and extends solely to the original purchaser of the product. Should the original purchaser sell or otherwise transfer this product to a third party, this implied, with respect to tires or other parts or accessories not manufactured by J. & M. Mfg. Co., Inc. Warranties for these items, if any, are provided separately by their respective manufacturers.

THIS WARRANTY IS EXPRESSLY IN LIEU OF ALL OTHER WARRANTIES OR CONDITIONS, EXPRESS, IMPLIED OR STATUTORY, INCLUDING ANY IMPLIED WARRANTY OF MERCHANTABILITY OR FITNESS FOR PARTICULAR PURPOSE.

In no event shall J. & M. Mfg. Co., Inc. be liable for special, direct, incidental or consequential damages of any kind. The exclusive remedy under this Warranty shall be repair or replacement of the defective component at J. & M. Mfg. Co., Inc.'s option. This is the entire agreement between J. & M. Mfg. Co., Inc. and the Owner about warranty and no J. & M. Mfg. Co., Inc. employee or dealer is authorized to make any additional warranty on behalf of J. & M. Mfg. Co., Inc.

The manufacturer reserves the right to make product design and material changes at any time without notice. They shall not incur any obligation or liability to incorporate such changes and improvements in products previously sold to any customer, nor shall they be obligated or liable for the replacement of previously sold products with products or parts incorporating such changes.

SERVICE:

The equipment you have purchased has been carefully manufactured to provide dependable and satisfactory use. Like all mechanical products, it will require cleaning and maintenance. Lubricate the unit as specified. Observe all safety information in this manual and safety signs on the equipment.

For service, your authorized J. & M. dealer has trained mechanics, genuine J. & M. service parts, and the necessary tools and equipment to handle all your needs.

Use only genuine J. & M. service parts. Substitute parts may void warranty and may not meet standards required for safety and satisfactory operation. Record the model number and serial number of your equipment in the spaces provided:

Model No: _____ **Serial No:** _____ **Date of Purchase:** _____

Purchased From: _____


Provide this information to your dealer to obtain correct repair parts.


TO THE OWNER:


The purpose of this manual is to assist you in operating and maintaining your grain cart in a safe manner. Read it carefully. It furnishes information and instructions that will help you achieve years of dependable performance and help maintain safe operating conditions. If this machine is used by an employee or is loaned or rented, make certain that the operator(s), prior to operating:


1. Is instructed in safe and proper use.
2. Reviews and understands the manual(s) pertaining to this machine.

Throughout this manual, the term **IMPORTANT** is used to indicate that failure to observe can cause damage to equipment. The terms **CAUTION**, **WARNING** and **DANGER** are used in conjunction with the Safety-Alert Symbol (a triangle with an exclamation mark) to indicate the degree of hazard for items of personal safety. When you see this symbol, carefully read the message that follows and be alert to the possibility of personal injury or death.

 This Safety-Alert symbol indicates a hazard and means **ATTENTION!**
BECOME ALERT! YOUR SAFETY IS INVOLVED!

 **DANGER** Indicates an imminently hazardous situation that, if not avoided, will result in death or serious injury.

 **WARNING** Indicates a potentially hazardous situation that, if not avoided, will result in death or serious injury, and includes hazards that are exposed when guards are removed.

 **CAUTION** Indicates a potentially hazardous situation that, if not avoided, may result in minor or moderate injury.

IMPORTANT Indicates that failure to observe can cause damage to equipment.

NOTE Indicates helpful information.

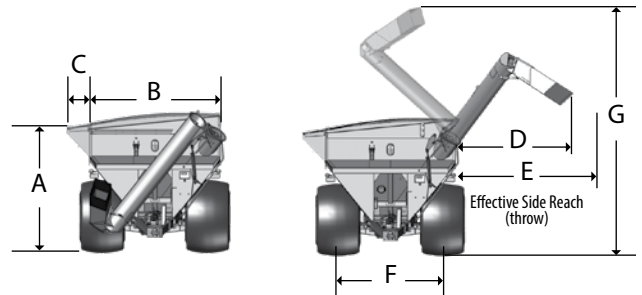
Specifications

| SPECIFICATIONS | <i>8'12"</i> | <i>10'12"</i> | <i>11'12"</i> | <i>13'12"</i> | <i>14'12"</i> |
|--|--|---|--------------------------------------|--------------------|--------------------|
| Single Wheel Option | | | | | |
| Capacity | 875 Bushels | 1,025 Bushels | 1,150 Bushels | 1,325 Bushels | 1,400 Bushels |
| Auger, One Vertical | 18" Bullet | 20" Bullet | 20" Bullet | 20" Bullet | 20" Bullet |
| Unload Time (minutes) | 1.8 minutes | 1.8 minutes | 1.9 minutes | 2.2 minutes | 2.3 minutes |
| Wheels (2) | 21x32, 27x32, 30x32, or 25x36 | 30x32, 31x32, 32x36 or 44x32 | 30x32, 32x36 or 44x32 | 44x32 | 44x32 |
| Tires (2) | 24.5x32, 30.5x32, 800/60R32, 900/60R32 or 66x43.00 | 900/60R32, 35.5x32, 1050/50R32, or 1250/50R32 | 900/60R32, 1050/50R32, or 1250/50R32 | 1250/50R32 | 1250/50R32 |
| Hubs (2) | 10 Bolt | 10 Bolt | 10 Bolt or 20 Bolt | 10 Bolt or 20 Bolt | 10 Bolt or 20 Bolt |
| Spindles (2) | 4 1/2" (Stress-Proof) | 4 1/2" (Stress-Proof) | 6" Diameter | 6" Diameter | 6" Diameter |
| Tongue Weight | | | | | |
| Empty | 1,275 lbs. | 2,900 lbs. | 2,900 lbs. | 2,400 lbs. | 2,400 lbs. |
| Loaded | 3,800 lbs. | 4,200 lbs. | 4,200 lbs. | 4,800 lbs. | 4,800 lbs. |
| Total Weight (approx.) | 9,300 lbs. | 12,900 lbs. | 13,500 lbs. | 16,100 lbs. | 16,300 lbs. |
| Walking Tandem Dual Wheels Option | | | | | |
| Capacity | | 1,000 Bushels | 1,125 Bushels | 1,300 Bushels | 1,375 Bushels |
| Wheels (4) | | 16x42, 18x38, 18x42 | 16x42, 18x38, 18x42 | 18x42 Heavy | 18x42 Heavy |
| Tires (4) | | 480/80R42, 520/85R38 or 520/85R42 | 480/80R42, 520/85R38 or 520/85R42 | 520/85R42 | 520/85R42 |
| Spindles (4) | | 4 1/2" Diameter | 4 1/2" Diameter | 4 1/2" Diameter | 4 1/2" Diameter |
| Total Weight (approx.) | | 16,100 lbs. | 16,500 lbs. | 19,100 lbs. | 19,300 lbs. |
| Tracks Option | | | | | |
| Capacity | 875 Bushels | 1,050 Bushels | 1,175 Bushels | 1,350 Bushels | 1,425 Bushels |
| Total Weight (approx.) | 17,300 lbs. | 21,300 lbs. | 21,700 lbs. | 22,800 lbs. | 23,000 lbs. |
| Compaction Rate | | 9.93 lbs/sq inch | 10.67 lbs/sq inch | 12.20 lbs/sq inch | 12.75 lbs/sq inch |
| Compaction Rate LT Series | 11.48 lbs/sq inch | 13.91 lbs/sq inch | 14.94 lbs/sq inch | | |



| | <i>8'12"</i> | <i>10'12"</i> | <i>11'12"</i> | <i>13'12"</i> | <i>14'12"</i> |
|----------|--------------|---------------|---------------|---------------|---------------|
| A | 11'-1" | 10'-11" | 11'-7" | 11'-4" | 11'-8" |
| B | 11'-9" | 11'-9" | 11'-9" | 11'-9" | 11'-9" |
| C | NA | NA | NA | NA | NA |
| D | 11'-7" | 10'-10" | 10'-10" | 10'-5" | 10'-5" |
| E | 14'-2" | 13'-6" | 13'-6" | 13'-1" | 13'-1" |
| F | 10'-0" | 10'-0" | 10'-0" | 10'-0" | 10'-0" |
| G | 22'-1" | 22'-3" | 22'-3" | 20'-11" | 20'-11" |
| H | 1'-7" | 1'-6" | 1'-6" | 1'-6" | 1'-6" |
| I | 15'-6" | 20'-1" | 20'-1" | 21'-10" | 21'-10" |
| J | 22'-8" | 30'-7" | 30'-7" | 34'-5" | 34'-5" |
| K | 13'-5" | 13'-6" | 13'-6" | 13'-6" | 13'-6" |
| L | 16'-0" | 22'-0" | 22'-0" | 25'-6" | 25'-6" |
| M | 11'-6" | 12'-0" | 12'-0" | 12'-2" | 12'-2" |
| N | 1'-5" | 1'-5" | 1'-5" | 1'-5" | 1'-5" |
| O | 10'-4" | 11'-2" | 11'-2" | 11'-8" | 11'-8" |
| P | 16'-8" | 18'-2" | 18'-2" | 18'-0" | 18'-0" |

DIMENSIONS



Specifications



22 SERIES

The low side of the grain cart features a bolt-on tank design that extends toward the combine auger for an additional two feet, giving both the combine and grain cart operators more room to navigate in the field without overlap.

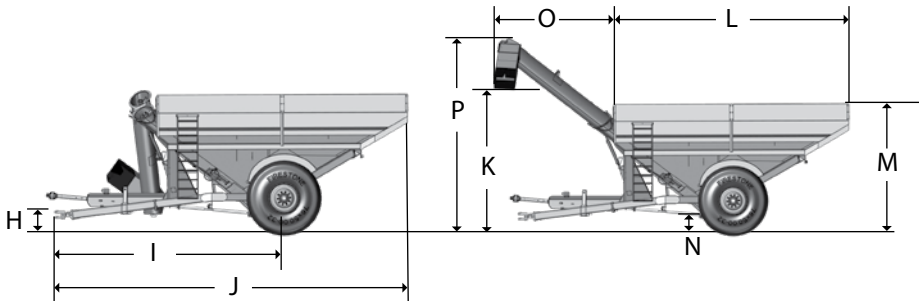
| SPECIFICATIONS | 1122 | 1222 | 1522 |
|-----------------------------------|--------------------------------------|--------------------|--------------------|
| Single Wheel Option | | | |
| Capacity | 1,130 Bushels | 1,250 Bushels | 1,475 Bushels |
| Auger, One Vertical | 20" Bullet | 20" Bullet | 20" Bullet |
| Unload Time (minutes) | 1.9 minutes | 2.1 minutes | 2.5 minutes |
| Wheels (2) | 30x32, 32x36 or 44x32 | 44x32 | 44x32 |
| Tires (2) | 900/60R32, 1050/50R32, or 1250/50R32 | 1250/50R32 | 1250/50R32 |
| Hubs (2) | 10 Bolt or 20 Bolt | 10 Bolt or 20 Bolt | 10 Bolt or 20 Bolt |
| Spindles (2) | 6" Diameter | 6" Diameter | 6" Diameter |
| Tongue Weight | | | |
| Empty | 2,900 lbs. | 2,900 lbs. | 3,000 lbs. |
| Loaded | 4,200 lbs. | 4,200 lbs. | 4,800 lbs. |
| Total Weight (approx.) | 14,600 lbs. | 14,800 lbs. | 16,900 lbs. |
| Walking Tandem Dual Wheels | | | |
| Capacity | 1,105 Bushels | 1,225 Bushels | |
| Wheels (4) | 16x42, 18x38, 18x42 | 18x42 Heavy | |
| Tires (4) | 480/80R42, 520/85R38 or 520/85R42 | 520/85R42 | |
| Spindles (4) | 4 1/2" Diameter | 4 1/2" Diameter | |
| Total Weight (approx.) | 17,600 lbs. | 17,800 lbs. | |
| Tracks Option | | | |
| Capacity | 1,155 Bushels | 1,275 Bushels | 1,500 Bushels |
| Total Weight (approx.) | 22,800 lbs. | 23,200 lbs. | 24,300 lbs. |
| Compaction Rate | 10.67 lbs/sq inch | 11.96 lbs/sq inch | 13.69 lbs/sq inch |
| Compaction Rate LT Series | 14.94 lbs/sq inch | | |



* Bushel capacity measured with #2 corn at 15% moisture content (56 lb. test weight)

** Time varies with RPM and moisture content of grain

DIMENSIONS



| | 1122 | 1222 | 1522 |
|---|---------|---------|---------|
| A | 10'-11" | 11'-7" | 11'-4" |
| B | 11'-9" | 11'-9" | 11'-9" |
| C | 2'-0" | 2'-0" | 2'-0" |
| D | 10'-10" | 10'-10" | 10'-5" |
| E | 13'-6" | 13'-6" | 13'-1" |
| F | 10'-0" | 10'-0" | 10'-0" |
| G | 22'-3" | 22'-3" | 20'-11" |
| H | 1'-6" | 1'-6" | 1'-6" |
| I | 20'-1" | 20'-1" | 21'-10" |
| J | 30'-7" | 30'-7" | 34'-5" |
| K | 13'-6" | 13'-6" | 13'-6" |
| L | 22' | 22' | 25'-6" |
| M | 12' | 12' | 12'-2" |
| N | 1'-5" | 1'-5" | 1'-5" |
| O | 11'-2" | 11'-2" | 11'-8" |
| P | 18'-2" | 18'-2" | 18'-0" |

General Information

BOLT TORQUE CHART

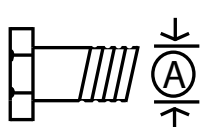
Always tighten hardware to these values unless a different torque or tightening procedure is listed for specific application.

Fasteners must always be replaced with the same grade as specified in the manual parts list.

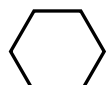
Always use the proper tool for tightening hardware: SAE for SAE hardware and Metric for Metric hardware.

Make sure fastener threads are clean and you start thread engagement properly.

All torque values are given to specifications used on hardware defined by SAE J1701 & J1701M (JUL 96)



SAE SERIES TORQUE CHART



SAE Grade 2
(No Dashes)


SAE Bolt Head
Identification

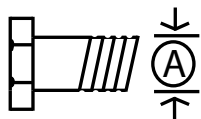


SAE Grade 5
3 Radial Dashes



SAE Grade 8
6 Radial Dashes

|  Diameter (Inches) | Wrench Size | MARKING ON HEAD | | | | | |
|---|----------------|-----------------|-----|----------|-----|----------|------|
| | | SAE 2 | | SAE 5 | | SAE 8 | |
| | | LBS.-FT. | N-m | LBS.-FT. | N-m | LBS.-FT. | N-m |
| 1/4 | 7/16" | 6 | 8 | 10 | 13 | 14 | 18 |
| 5/16 | 1/2" | 12 | 17 | 19 | 26 | 27 | 37 |
| 3/8 | 9/16" | 23 | 31 | 35 | 47 | 49 | 67 |
| 7/16 | 5/8" | 36 | 48 | 55 | 75 | 78 | 106 |
| 1/2 | 3/4" | 55 | 75 | 85 | 115 | 120 | 163 |
| 9/16 | 13/16" | 78 | 106 | 121 | 164 | 171 | 232 |
| 5/8 | 15/16" | 110 | 149 | 170 | 230 | 240 | 325 |
| 3/4 | 1-1/8" | 192 | 261 | 297 | 403 | 420 | 569 |
| 7/8 | 1-5/16" | 306 | 416 | 474 | 642 | 669 | 907 |
| 1 | 1-1/2" | 467 | 634 | 722 | 979 | 1020 | 1383 |

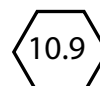


METRIC SERIES TORQUE CHART



Metric
Grade 8.8

Metric Bolt Head
Identification



Metric
Grade 10.9

| Diameter & (Millimeters) Thread Pitch | Wrench Size | COARSE THREAD | | | | FINE THREAD | | | | Diameter & (Millimeters) Thread Pitch |
|--|----------------|-------------------|-----|-------------|------|-------------------|-----|-------------|------|--|
| | | MARKING ON THREAD | | | | MARKING ON THREAD | | | | |
| | | Metric 8.8 | | Metric 10.9 | | Metric 8.8 | | Metric 10.9 | | |
| 6 x 1.0 | 10 mm | 8 | 6 | 11 | 8 | 8 | 6 | 11 | 8 | 6 x 1.0 |
| 8 x 1.25 | 13 mm | 20 | 15 | 27 | 20 | 21 | 16 | 29 | 22 | 8 x 1.0 |
| 10 x 1.5 | 16 mm | 39 | 29 | 54 | 40 | 41 | 30 | 57 | 42 | 10 x 1.25 |
| 12.1.75 | 18 mm | 68 | 50 | 94 | 70 | 75 | 55 | 103 | 76 | 12.1.25 |
| 14 x 2.0 | 21 mm | 109 | 80 | 151 | 111 | 118 | 87 | 163 | 120 | 14 x 1.5 |
| 16 x 2.0 | 24 mm | 169 | 125 | 234 | 173 | 181 | 133 | 250 | 184 | 16 x 1.5 |
| 18 x 2.5 | 27 mm | 234 | 172 | 323 | 239 | 263 | 194 | 363 | 268 | 18 x 1.5 |
| 20 x 2.5 | 30 mm | 330 | 244 | 457 | 337 | 367 | 270 | 507 | 374 | 20 x 1.5 |
| 22 x 2.5 | 34 mm | 451 | 332 | 623 | 460 | 495 | 365 | 684 | 505 | 22 x 1.5 |
| 24 x 3.0 | 36 mm | 571 | 421 | 790 | 583 | 623 | 459 | 861 | 635 | 24 x 2.0 |
| 30 x 3.0 | 46 mm | 1175 | 867 | 1626 | 1199 | 1258 | 928 | 1740 | 1283 | 30 x 2.0 |

TIGHTENING WHEEL NUTS

Standard 3/4" wheel studs and nuts should be tightened to torque 500 Ft.-Lbs and standard 22mm studs should be tightened to torque 700 Ft.-Lbs. During initial operation of the grain cart and then checked for proper torque after every 10 hours of use. Failure to do so may damage wheel nut seats. Once seats are damaged, it will become impossible to keep nuts tight.



ATTENTION! BECOME ALERT! YOUR SAFETY IS INVOLVED!



Safety is a primary concern in the design and manufacture of our products. Unfortunately, our efforts to provide safe equipment can be erased by an operator's single careless act. In addition, hazard control and accident prevention are dependent upon the awareness, concern, judgment, and proper training of personnel involved in the operation, transport, maintenance and storage of equipment.

Make certain that the operator(s), prior to operating is instructed in safe and proper use and reviews and understands the manual(s) pertaining to this machine. Also make certain that the operator(s) reviews and understands the operator's manual of the tractor prior to hooking up or operating the grain cart.

Read this manual before you operate this machine. If you do not understand any part of this manual, or need more information, contact the manufacturer or your authorized dealer.

SAFETY

Understand that your safety and the safety of other persons is measured by how you service and operate this machine. Know the positions and functions of all controls before you try to operate them. Make sure to check all controls in a safe area before starting your work.

The safety information given in this manual does not replace safety codes, federal, state or local laws. Make certain your machine has the proper equipment as designated by local laws and regulations.

A frequent cause of personal injury or death is from persons falling off equipment and being run over. Do not permit persons to ride on this machine.

Travel speeds should be such that complete control and machine stability is maintained at all times. Where possible, avoid operating near ditches, embankments and holes. Reduce speed when turning, crossing slopes and rough, slick or muddy surfaces.

Collision of high speed road traffic and slow moving machines can cause personal injury or death. On roads, use flasher lights according to local laws. Keep slow-moving-vehicle emblem visible. Pull over to let faster traffic pass.

Hydraulic oil leaking under pressure can penetrate skin and cause infection or other injury. To prevent personal injury,

- Relieve all pressure, before disconnecting fluid lines,
- Before applying pressure, make sure all connections are tight and components are in good condition,
- Never use your hand to check for suspected leaks under pressure. Use a piece of cardboard or wood for this purpose.
- If injured by leaking fluid, see your doctor immediately.

When transporting the grain cart, always keep the auger in the stow position.

Use care when moving or operating the grain cart near electric lines as serious injury or death can result from contact.

Never adjust, service, clean, or lubricate the grain cart until all power is shut off. Keep all safety shields in place. Keep hands, feet, hair and clothing away from moving parts while the grain cart is in operation.

The service ladder is for service work only. If you must climb into the grain tank, be certain that all power is shut off and then use extreme caution when climbing into the grain cart.

Make sure that everyone is clear of equipment before applying power or moving the machine.

Make sure that the grain cart is fastened securely to the tractor by using a high strength hitch pin, clip and safety chains. Make sure that the grain cart hitch properly matches the hitch type of the tractor. Use a single prong (spade) grain cart hitch with a double prong (clevis) tractor hitch. Use a double prong (clevis) grain cart hitch with a single prong (spade) tractor hitch.

Before filling the grain cart, make certain that no one is inside the grain tank. Never allow children or anyone in, near, or on the grain cart during transport or during loading and unloading of grain. Be aware that moving grain is dangerous and can cause entrapment, resulting in severe injury or death by suffocation.

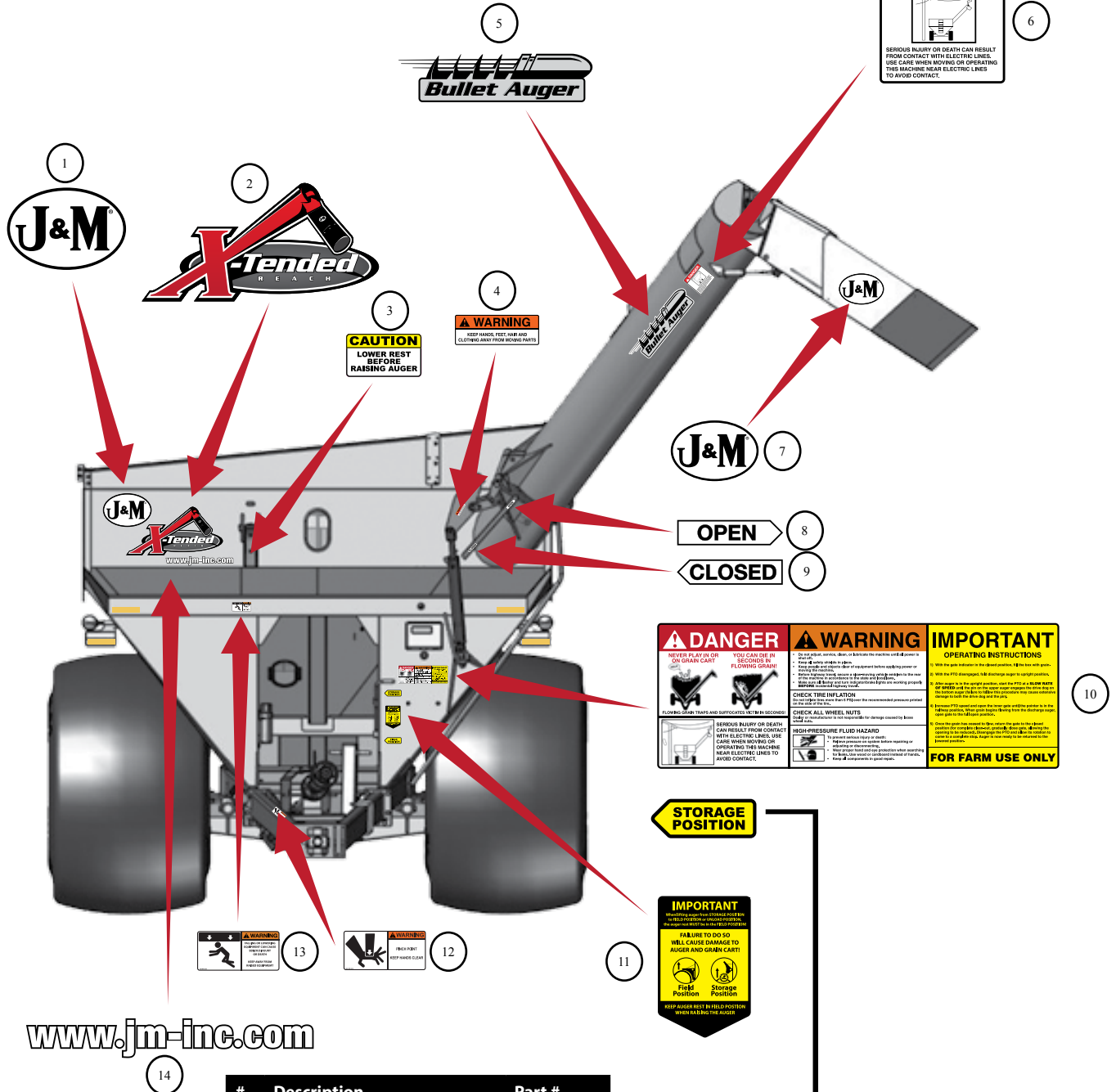
Never operate the auger system with anyone inside the grain tank. Hands, feet, hair and clothing can fit through the openings in and around the grate. Contact with the auger can cause severe injury or death. Make certain that all power is shut off before service work is performed.

Before unhooking the grain cart from the tractor, be sure the jack stand is properly mounted and in place and the wheels are properly blocked to prevent the cart from moving.

Safety Rules

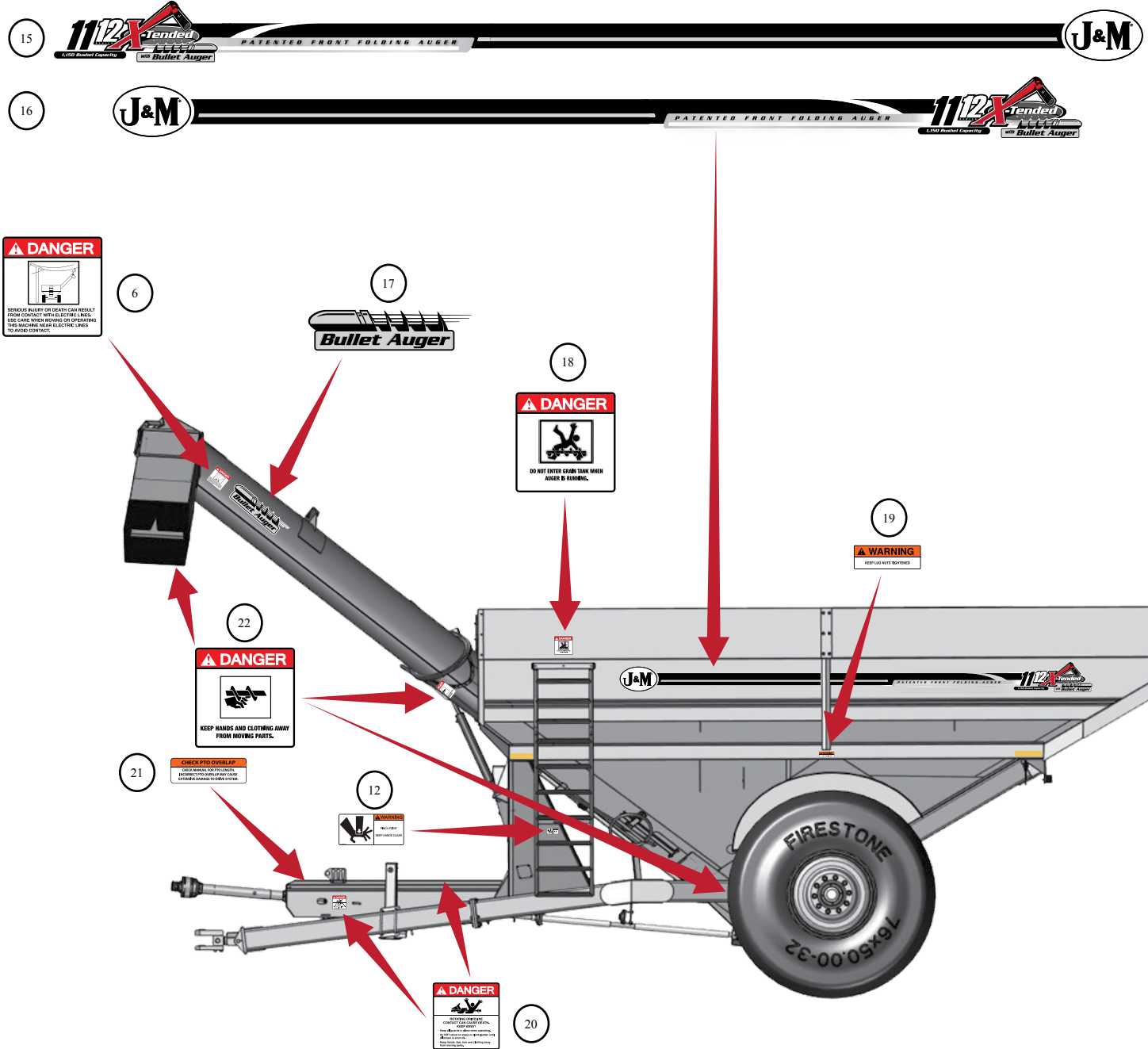
⚠ ATTENTION! BECOME ALERT! YOUR SAFETY IS INVOLVED! ⚠

Replace Immediately If Damaged or Missing



| # | Description | Part # |
|----|---------------------------------|-----------|
| 1 | J&M Oval Decal, Large | JM0015151 |
| 2 | X-tended Reach | JM0037663 |
| 3 | Caution Lower Rest | JM0037662 |
| 4 | Warning, Keep Hands Away | JM0018039 |
| 5 | Bullet Auger | JM0037664 |
| 6 | Danger, Electric Lines | JM0015099 |
| 7 | J&M Oval Decal, Medium | JM0010179 |
| 8 | Open | JM0025433 |
| 9 | Closed | JM0025434 |
| 10 | Danger Warning Important | JM0037665 |
| 11 | Field Position/Storage Position | JM0037661 |

Safety Rules



| # | Description | Part # |
|----|----------------------------|-----------|
| 12 | Warning, Pinch Point | JM0014994 |
| 13 | Warning, Falling/Lowering | JM0014992 |
| 14 | www.jm-inc.com | JM0019239 |
| 15 | OAS Stripe Kit | Specify |
| 16 | AS Stripe Kit | Specify |
| 17 | Bullet Auger | JM0037664 |
| 18 | Danger, Do Not Enter Tank | JM0018033 |
| 19 | Warning, Lug Nuts | JM0010150 |
| 20 | Danger, Rotating Driveline | JM0018036 |
| 21 | Check PTO Overlap | JM0025435 |
| 22 | Danger, Keep Hands Away | JM0018035 |

WARNING

BE CERTAIN THAT ALL POWER IS SHUT OFF BEFORE SERVICING THE GRAIN CART.

Before the grain cart is put into service:

- Have the safety instructions been read and clearly understood by the operator(s) of this machine?
- Has the gearbox been properly filled with EP-80-90 gearbox lubricant?
- Have all nuts, bolts, bearings and braces been properly fastened?
- Has the PTO been checked for proper overlap?

IMPORTANT: Has the slip clutch on the PTO been serviced? If the slip clutch is left unchecked, damages to the power-take-off and drive shaft may result. Before using the grain cart, loosen the bolts around the slip clutch. Make sure the friction plates turn free of each other and are not corroded together. Re-tighten the tension bolts. Run the auger system EMPTY and check for proper engagement of the slip clutch.

CHECK PTO OVERLAP LENGTH. Overlap length may vary depending on the tractor model and hitch setting. Try to obtain the greatest possible overlap without bottoming out in the extreme operating conditions. Too much overlap may cause the PTO to bottom out and damage the driveline. Not enough overlap may cause the PTO front and back halves to separate. From the fully compressed (shortest) length the PTO should be telescoped (extended) between 10" and 22". Different PTO lengths may need to be purchased to accommodate your terrain. A 4" shorter or a 10" longer PTO can be ordered through your dealer from J&M Manufacturing.

GREASE BEARINGS: Are all bearings on the drive line properly greased? Are all set screws in the bearings and U-joints tight? Has the power-take-off shaft been properly greased at all points including the cross bearings? Has the universal joint at the gearbox been greased? Have all grease points at the auger hinge area, including the hanger bushing assembly been greased?

TIRE PRESSURE: Are the tires properly inflated? The following is to be used as a **general guide** for tire inflation for cyclic use. Figures can vary depending on specific brand of tire used. **It is important that tires are inspected before and after the unit is loaded. The tire should stand up with no side wall buckling or distress as the tire rolls. Do Not Exceed The Tire Pressure Indicated Below:**

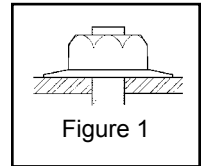
| Tire Size | psi |
|---------------------|-----|
| 24.5 x 32-R3-2-16 | 24 |
| 30.5 x 32-R1-2 | 34 |
| 30.5 x 32-R1-2-18 | 36 |
| 800/60R32-R3-2 | 46 |
| 900/60R32-R1-2-185 | 57 |
| 66 x 43.00-R1-2 | 35 |
| 900/60R32-R1-2 | 41 |
| 900/60R32-R1-2A | 66 |
| 35.5 x 32-R3-2 | 26 |
| 1050/50R32-R1-2 | 56 |
| 1250/50R32-R1-2-188 | 46 |
| 480/80R42-4 | 29 |
| 520/85R38-4 | 29 |
| 520/85R42-4 | 44 |
| 900/60R32-R1-2-193 | 66 |

Operating Instructions

VERY IMPORTANT: Under no circumstance is it recommended to tow a loaded grain cart in excess of 8 mph.

WHEEL NUTS: Are the wheel nuts properly fastened? **Torque to 700 Lbs.-Ft. for standard 22mm wheel studs and nuts. Torque to 500 Lbs.-Ft. for 3/4" wheel studs and nuts. Torque to 350 Lbs.-Ft. for 5/8" wheel studs and nuts. Wheel studs and nuts should be checked after each load during initial operation of the cart and then after every 10 hours of use. Failure to do so may damage wheel studs and nuts.** Once the seats are damaged, it will become impossible to keep the lug nuts tight.

The drawing shows the proper way to mount the wheels using Budd-type nuts. The wheels supplied with your grain cart have straight holes and the Budd nuts will be mounted according to Figure 1. Wheels that are improperly installed on the grain cart, resulting in product failure, will nullify warranty and shift the burden of liability to the owner/operator. **We recommend you inspect your wheel nuts to make sure they are properly installed. Also, check the wheel nuts on a regular basis to ensure they are tight.**



LIGHTING AND SAFETY DECALS: Are the rear, amber extremity lights properly positioned? Extend the lights within 16" (40,6cm) of the left and right extremities of the grain cart. Is an SMV Emblem attached to the rear of the grain cart?

Are the lights working properly? Are all lights and reflective decals clean, visible and properly placed?

BE CERTAIN THAT ALL POWER IS SHUT OFF WHEN HOOKING UP TO TRACTOR OR CONNECTING HYDRAULIC LINES TO TRACTOR.

Preparing the Grain Cart for Use: Model 812 requires a 150+ HP Tractor. Models 1012, 1112, and 1122 requires a 225+ HP Tractor. Models 1222, and 1312 requires a 250+ HP Tractor. Models 1412 and 1522 require a 300+ HP Tractor.

IMPORTANT: Do NOT pull a loaded grain cart on highway. For incidental highway travel, observe the section below.

Tow Loads Safely

Stopping distance increases with speed and weight of towed loads, and on slopes. Towed loads with or without brakes that are too heavy for the tractor or are towed too fast can cause loss of control. Consider the total weight of the equipment and its load.

Observe these recommended maximum road speeds, or local speed limits which may be lower.

Road Travel (grain cart empty): Do not travel more than 32 km/hr (20 mph) and do not tow loads more than 1.5 times the pulling unit's weight.

Ensure the load does not exceed the recommended weight ratio. Use additional caution when towing loads under adverse surface conditions, when turning, and on inclines.

WARNING: For greater stability on uneven or steep terrain, position non-scale wheel spindles at the furthest out setting.

IMPORTANT:

1) Connect grain cart hitch to tractor drawbar using a good quality hitch pin. Attach the safety chain to the tractor and through one chain loop provided on either side of the grain cart frame as shown. Make sure the grain cart hitch properly matches the hitch of the tractor. Use a single prong (spade) grain cart hitch with a tractor double prong (clevis) hitch. Use a double prong (clevis) grain cart hitch with a single prong (spade) tractor hitch.



Safety Chain User Instruction

- Secure the safety chain by looping it around the each side of the grain cart as shown and connecting to the towing machine's attaching bar.
- Do Not allow any more slack than necessary for articulation.
- Do Not use any intermediate support as the attaching point.
- Store the safety chain by securing it around the main axle A-frame of the grain cart.
- Replace the safety chain if one or more links or end fittings are broken, stretched or otherwise damaged or deformed.

2) Attach the power-take-off shaft to the tractor. The PTO must have at least 10" of engagement. Check tractor drawbar for clearance and length and adjust if necessary. **Make sure the PTO does not bottom out when making sharp turns as it may bend the drive shaft.**

3) Make sure the jack stand is removed from the lower support position before the cart is moved. **Never use the jack to support a loaded grain cart.**

4) Be sure that no debris or foreign objects are in the grain cart.

Continues on next page.

Operating Instructions (Continued)

5) Attach the hydraulic lines to the tractor. Two hydraulic lines (green band) operate the inside gate mechanism. Connect these lines to one service outlet on the tractor. Two hydraulic lines (yellow band) operate the folding mechanism of the auger. Connect these lines to a second service outlet on the tractor. The remaining two hydraulic lines (red band) operate the hydraulic flow control spout located at the end of the upper auger. Connect these lines to a third service outlet on the tractor. Make sure the air is bled from the hydraulic cylinders and hoses.

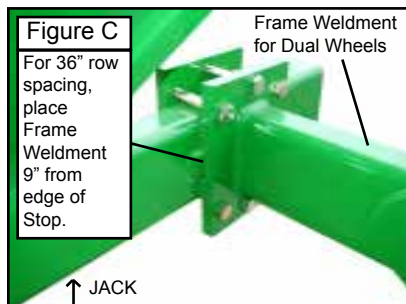
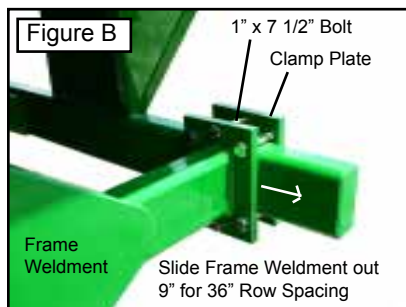
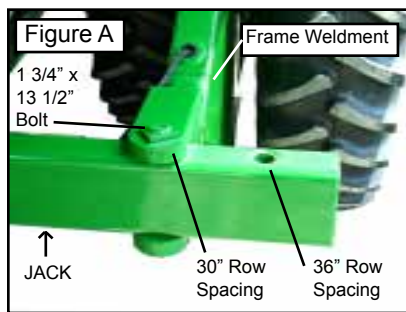
6) Run the auger system EMPTY before loading grain into the tank for actual use. Make certain that the slip clutch is operating and that the upper and lower augers are properly engaged.

7) Connect the lighting 7-prong connector end on the main wiring harness to the tractor electrical outlet. Make sure that all flasher and turn indicator lights are working properly before incidental highway travel.

CAUTION

- Do NOT operate the grain cart before reading and understanding the Operator's Manual and ALL danger, warning and caution signs.
- Be sure that a Slow-Moving-Vehicle emblem is attached to the rear of the grain cart.
- Never exceed 1,000 rpm on the PTO and driveline system.
- Never fold or extend the auger until the PTO has come to a complete stop.
- Never fill the grain cart unless the gate indicator is in the closed position.
- Never allow foreign object (shovels, etc.) to be placed inside the grain cart.
- Never engage the lugs and drive dogs on the augers when the system is moving at a high rate of speed.
- Never perform maintenance work or service the grain cart with the tractor running.

Adjusting Row Spacing For Walking Tandem Duals



1) Securely position jacks under the frame of the grain cart as shown in Figures A and C.

2) Loosen the rear of the Frame Weldment by removing the 1" x 7 1/2" Gr 8 Bolts and Clamp Plate.

3) Remove the 1 3/4" x 13 1/2" Bolt and Jam Nut from the front of the Frame Weldment.

4) Slide the Frame Weldment out to the bolt location for 36" row spacings as shown in Figure A and secure using the 1 3/4" x 13 1/2" bolt and jam nut. If the grain cart is equipped with an electronic scale system, be sure not to damage the electronic cord when moving the Frame Weldment.

5) Swing the Frame Weldment outward. Switch the tire location by removing both tires and remounting each tire to the hub on the opposite side of the weldment. The tire originally on the outside of the weldment will now be located on the inside of the weldment and vice versa. (The valve stems for 36" row spacing should be facing toward the Frame Weldment, or toward each other.) Be sure to keep the tire tread positioned in the same direction as before.

6) After the wheels have been tightened to the hubs, swing the Frame Weldment until the new clamping location is 9" from the original 30" row spacing stop.

7) Tighten the rear of the Frame Weldment to the grain cart frame using the six 1" x 7 1/2" Gr 8 Bolts, Hex Nuts and Clamp Plate.

8) Torque all bolts to specifications and Repeat on Other Side.

Lubrication Service Schedule

IMPORTANT: Your grain cart has grease fittings at all critical points. These should be serviced before the grain cart is put into operation.

WARNING

BE CERTAIN THAT ALL POWER IS SHUT OFF BEFORE SERVICING THE GRAIN CART

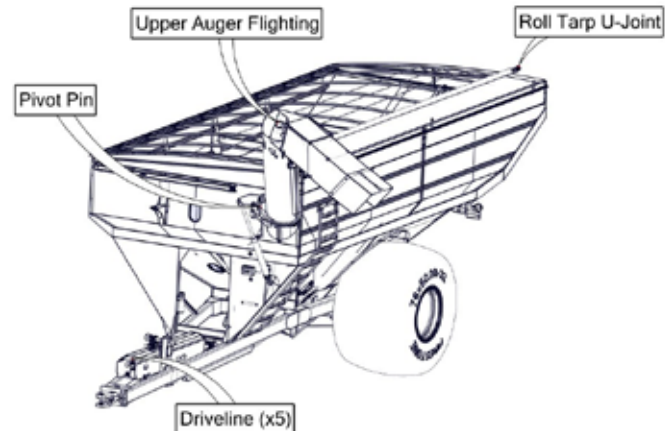
PTO & DRIVELINE: The grease fittings on the PTO should be serviced after every 8 hours of use. Service the grease fittings on each of the drive bearings and also the universal joint after every 8 hours of use.

AUGER FOLDING MECHANISM: One grease fitting is located on the pivot pin of the folding auger. This fitting should be serviced after every 8 hours of use. Service the grease fitting on the hanger bushing assembly (top end of the lower auger assembly) after every 8 hours of use or as needed.

SPRING LOADED UPPER AUGER BEARING: Service the grease fitting on the upper auger bearing (located at the top end of the upper auger assembly) after every 8 hours of use. Lubricate the springs and retaining bolts on the bearing before prolonged storage of the grain cart.

GEARBOX: Gearbox lubricant has been added to the gearbox during final assembly. Recheck the lubricant level before initial operation of the grain cart, then periodically according to use. An inspection plug is located in the center of the top of the gearbox mount plate. To check the fluid level, remove the vented inspection plug and drain plug at the bottom of the gearbox. Drain the lubricant. Return the drain plug and refill the gearbox with **24 ounces** (0,71 liters)(18" & 20" auger gearbox) or **96 ounces** (22" auger gearbox) of gearbox lubricant. **DO NOT OVERFILL.** Use EP 80-90 gearbox lubricant or equivalent. To clarify which gearbox you have, measure the diameter of the output shaft. The output shaft connects the gearbox to the flighting. The 18" & 20" gearboxes will have a 1-3/4" output shaft along with a 1-3/4" input shaft. The 22" gearbox will have a 2" output shaft along with a 1-3/4" input shaft.

| Gearbox Lubricant | | | |
|-------------------|--------|-------------|--------------|
| Model | Ounces | Input Shaft | Output Shaft |
| 812 | 24 | 1-3/4" | 1-3/4" |
| 1012 | 96 | 1-3/4" | 2" |
| 1112 | 96 | 1-3/4" | 2" |
| 1122 | 96 | 1-3/4" | 2" |
| 1222 | 96 | 1-3/4" | 2" |
| 1312 | 96 | 1-3/4" | 2" |
| 1412 | 96 | 1-3/4" | 2" |
| 1522 | 96 | 1-3/4" | 2" |



| | | | |
|-------------------|---------------|-----------------------|--------------------|
| Pivot Pin | Once Annually | Upper Auger Flighting | Every 8hrs of use. |
| Roll Tarp U-Joint | Once Annually | Driveline | Every 8hrs of use. |

Routine Maintenance

WARNING

BE CERTAIN ALL POWER IS SHUT OFF WHEN SERVICING THE GRAIN CART

- Repack the bearings in the hub assembly once a year or as needed. Use a good quality LS EP2 Severe Duty, High Shock Load, Lithium based Grease. Also check the seal for wear and replace if necessary.
- Check the grain cart periodically for cracks in welds and for other structural damage. Have cracked welds fixed immediately. Failure to do so could result in extensive damage to the grain cart and greatly reduce the life of the cart.
- Lubricate the slides on the clean-out door.
- Check all hydraulic hoses for wear and replace as necessary.
- Make sure all tires are properly inflated. See INITIAL OPERATION AND MAINTENANCE in the Owner's Manual for recommended instructions for tire pressure. It is important that tires are inspected before and after unit loaded.
- Check PTO for wear of plates in the slip clutch. Replace if needed.
- Make sure that all guards and shields are in place before operating the grain cart.

Troubleshooting

WARNING

MAKE SURE THAT ALL POWER IS SHUT OFF BEFORE SERVICING THE GRAIN CART. MAINTENANCE AND REPAIR SERVICE WORK TO BE PERFORMED BY QUALIFIED SERVICEMEN ONLY.

| Trouble... | Possible Cause... | Possible Remedy... |
|--|---|---|
| Auger will not return to down position or move from stow position. | Dirt In Restrictor (see pg. 17) Faulty Check Valve Upper flighting and lower flighting are locked together (see pg. 16) | Remove restrictor fittings from outside hydraulic cylinder and clean out dirt Replace Check Valve Bearing on top of upper auger flighting need adjusting. When the auger is in the engaged position, there must be 1/8" (0,32cm) gap between bottom of top bearing and top of upper tube housing (SEE ADJUSTING THE UPPER AUGER FLIGHTING) |
| Hanger Bushing Assembly at the top of the lower auger flighting is hot | Top of the hanger bushing assembly is rubbing against the drive dog (See pg.17) | Loosen the two bolts and re-adjust the position of the hanger bushing assembly. Re-tighten bolts. Remove the lower flighting assembly and place a shim between the spline coupler and the gearbox. |
| Excessive Vibration | Auger flighting or shaft is bent Drive shaft is bent | Straighten or replace auger flighting Replace or straighten drive shaft |
| Grain flow stoppage | Bolt sheared in drive dog Folding auger before complete stop PTO key sheared | Replace bolt in drive dog. Engage upper and lower flighting at a slow rate of speed. (Drive dogs and lugs are being engaged too fast.) Upper and lower flightings are disengaging before auger comes to a complete stop. Replace bolt in the drive dog. Never engage or disengage the upper and lower flightings until the augers come to a complete stop. Replace key and tighten set screw. |
| Auger tube is breaking away from the grain cart at the hinge area or the ram in the hydraulic folding cylinder is bent | Upper auger is extended in the upright position while traveling in the field | Repair or place folding cylinder if necessary. Remember to lower auger to the field position after unloading. |
| Flip-up Auger Rest not flipping over center. | Cable has loosened. | With Auger in Filed position tighten cable to the handle. |

Adjusting the Lower Flighting

WARNING

MAKE SURE THAT ALL POWER IS SHUT OFF BEFORE ADJUSTING THE FLIGHTING ASSEMBLY.

If the drive-dog and hanger assembly are becoming excessively hot during unloading, the lower flighting and/or hanger may need adjusting. The hanger bushing assembly has elongated holes where it attaches to the outer tube assembly. Loosen the two 3/8" bolts on the hanger bushing assembly. Adjust the hanger either up or down and vertically center it between the flighting and drive dog. Re-tighten the bolts. Make certain that the flighting center and drive-dogs do not rub the hanger bushing assembly, causing them to become hot.

If the hanger can no longer be adjusted by moving it up or down on the elongated holes, both the hanger bushing assembly and the lower flighting will have to be removed. See instructions on pg. 36 for flighting removal. After removing them from the tube assembly, place a shim [between 1/8" (0,32cm) to 3/16" (0,48cm) thick] where the gearbox and the spline coupler (welded to the lower flighting). Replace the lower flighting and reattach the hanger to the tube assembly. Readjust the hanger assembly. NOTE: The bottom of the lower flighting is not attached to the gearbox with any bolts or set screws but may be 'frozen' fast. Be careful when removing the lower flighting from the gearbox. For easier removal of the lower flighting, keep the gearbox at the bottom intact, remove the 2 3/8" bolts from the hanger bushing assembly and pull the lower flighting off of the gearbox.

After adjusting the lower flighting, move the upper auger to the unload position and check the upper flighting for readjustment.

Adjusting the Upper Flighting

WARNING

MAKE SURE ALL POWER IS SHUT OFF BEFORE ADJUSTING THE FLIGHTING ASSEMBLY

If the upper and lower augers do not properly separate during the unfolding sequence, the upper flighting may need adjusting. Before making adjustment to the upper flighting, check to see if the lugs and drive dogs on the auger assemblies are locking together. If they are not locked together, check to see if dirt is in the restrictor or if a faulty check valve on the hydraulic cylinder used to raise and lower the upper auger assembly may be causing the problem. If dirt is in the restrictor, see "Removing Dirt From Restrictors On Hydraulic Cylinders" below.

Fold the upper tube assembly into the upright position. Position the upper flighting in the engaged position with the lower flighting. Locate the four-hole flange bearing on the top of the upper auger tube housing. With the upper flighting in the engaged position, check the spacing between the upper bearing and the upper tube housing. There must be an 1/8" (0,32cm) space between the base of the four-hole flange bearing and the upper tube housing. If there is NOT a space between the bearing and the upper tube housing, or if there is more than 1/8" (0,32cm) space, the upper flighting will need to be adjusted. To adjust the upper flighting, loosen the 1 1/4" hex nuts both above and below the four-hole flange bearing. Move the 1 1/4" hex nuts up or down the threaded shaft on the top of the auger flighting shaft until the bearing moves to approximately 1/8" (0,32cm) above the base of the upper tube housing. When the four-hole flange bearing is properly located, tighten both 1 1/4" hex nuts together to secure the bearing position.

If the upper and lower flighting still does not separate properly during the folding sequence, a small bevel may need to be removed from the inside of the lugs where they engage the drive dogs on the auger assemblies. Grind approximately 1/8" (0,32cm) from the corner of the lugs where they touch against the drive dogs.

Removing Dirt From The Restrictors On The Hydraulic Cylinder

WARNING

MAKE SURE THAT ALL POWER IS SHUT OFF AND THE UPPER AUGER TUBE IS IN THE DOWN POSITION BEFORE REMOVING THE RESTRICTORS

Remove restrictors from the 90 degree street elbow on the hydraulic cylinder. Remove dirt from the fitting to allow hydraulic oil to flow through the restrictor. Reattach the restrictor to the street elbow. Use teflon sealant tape or equivalent on the threads of the restrictor before re-attaching.

If the restrictor continues to plug with dirt, replace the restrictor or filter the hydraulic oil in your system.

Storage Preparation

IMPORTANT: When the grain cart is not going to be used for a period of time, store the cart in a dry, protected place. Leaving your grain cart outside, open to the weather will shorten it's life.

Follow the procedure below when your grain cart is placed in storage for periods up to six months.

1. Cover electronic monitor (if equipped) with plastic before washing the grain cart. Wash or clean and completely lubricate the grain cart. See the lubrication service section in this manual.
2. Remove all grain from inside the grain tank, auger tube assemblies, and at the clean-out door.
3. Check the gearbox oil and replace with new EP 80-90 gearbox lubricant or equivalent if necessary.
4. Touch up areas where paint may have worn away. Use a good quality primer paint, especially before re-applying graphite paint to the interior slopes of the grain tank.
5. Retract all hydraulic cylinders to prevent the piston rods from rusting.
6. If the grain cart is equipped with an electronic weigh system, fully charge the battery to prevent freezing. Disconnect the negative (-) ground cable at the battery to prevent possible discharge.
7. Clean the tires before storage. Inflate the tires at regular intervals.
8. Open the clean-out door at the base of the grain tank.

Removing From Storage

- Check the gearbox to make sure it has the appropriate amount of oil.
- If equipped with an electronic scale system, check the battery and make sure that it is fully charged. Reconnect the negative (-) cable.
- Inflate the tires to the correct operating pressure.
- Close the clean out door at the base of the grain tank.
- Make sure all safety shields are in the proper position.

Repair Parts List and Diagrams

When performing maintenance work, wear sturdy, rough-soled work shoes and protective equipment for eyes, hair, hands, hearing and head. Follow the Operator's Manual instructions to ensure safe and proper maintenance and repair.

Your local, authorized dealer can supply genuine replacement parts. Substitute parts may not meet original equipment specifications and may be dangerous.

WARNING

MAKE SURE ALL POWER IS SHUT OFF BEFORE PERFORMING ANY MAINTENANCE OR REPAIR WORK.

WHEEL RIMS FOR GRAIN CARTS

| Description | Part. No. |
|---|-----------|
| Wheel Rim, 10 hole, 16x42 (11.13 pilot) (13.19 bolt circle) | JM0020015 |
| Wheel Rim, 10 hole, 18x38 (11.13 pilot) (13.19 bolt circle) | JM0020014 |
| Wheel Rim, 10 hole, 18x42 (11.13 pilot) (13.19 bolt circle) | JM0020016 |
| Wheel Rim, 10 hole, 21x32 (11.13 pilot) (13.19 bolt circle) | JM0020025 |
| Wheel Rim, 10 hole, 25x36 (11.13 pilot) (13.19 bolt circle) | JM0020048 |
| Wheel Rim, 10 hole, 27x32 (11.13 pilot) (13.19 bolt circle) | JM0020027 |
| Wheel Rim, 10 hole, 31x32 (3 piece) (11.13 pilot) (13.19 bolt circle) (for 35.5x32 R-3 Tires) | JM0020037 |
| Rubber O-Ring Seal for 31x32-10 Wheel Rim (52-49469-00) | JM0020030 |
| Wheel Rim, 10 hole, 32x36 (11.13 pilot) (13.19 bolt circle) | JM0020051 |
| Wheel Rim, 10 hole, 30x32 (11.13 pilot) (13.19 bolt circle) | JM0020005 |
| Wheel Rim, 10 hole, 32x36 (3 piece) (11.13 pilot) (13.19 bolt circle) | JM0020052 |
| Wheel Rim, 10 hole, 44x32 (11.13 pilot) (13.19 bolt circle) | JM0020054 |

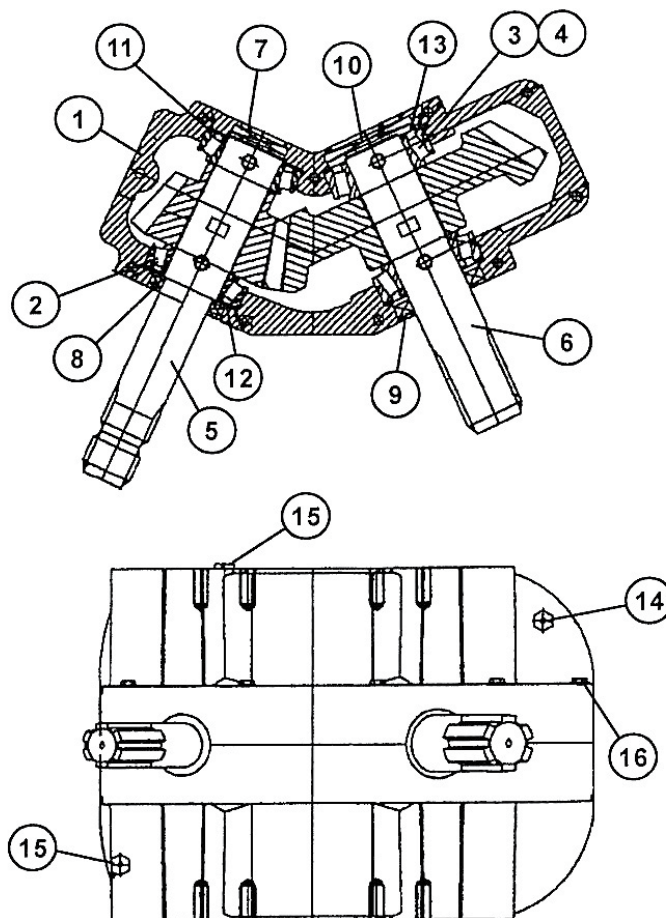
TIRES FOR GRAIN CARTS

| Description | Part. No. |
|---|-----------|
| 480/80R42 Lug Tire, 12 ply (for 16x42-10 wheel) | JM0020038 |
| 520/85R38 Lug Tire, 154 LI (for 18x38-10-8.7 and 18x38-10 wheels) | JM0020418 |
| 520/85R42 Lug Tire, 162 LI (for 18x42-10 wheel) | JM0020040 |
| 30.5x32-R1-2-18 Lug Tire, 18 ply | ALLIANCE |
| 30.5x32 Lug Tire, 12 ply (for 27x32-10 wheel) | JM0017665 |
| 35.5x32 Diamond Tire, 20 ply (for 31x32-10 3-piece wheel) | JM0021557 |
| 66x43.00 Lug Tire, 16 ply (for 25x36-10 wheel) | JM0021535 |
| 800/60R32-R3-2 Diamond, 181LI (for 27x32-10 wheel) | JM0021551 |
| 900/60R32 Lug Tire, 176 LI (for 27x32-10HD heavy duty or 31x32-1P-10 one piece wheel) | JM0017662 |
| 900/60R32-R1-2 Lug Tire, 176 LI (for 30x32-10 wheel) | ALLIANCE |
| 1050/50R32 Lug Tire, 185 LI (for 32x36 1Piece wheel) | ALLIANCE |
| 1250/50R32 Lug Tire, 188 LI (for 44x32 wheel) | JM0021014 |
| 24.5x32 Diamond Tire, 16 ply (for 21x32-10HD heavy duty wheel) | JM0021549 |

**130 Degree Gearbox Assembly for 20" Diameter Turbo Augers (WEASLER)
For Models 1012, 1112, 1312, 1412, 1122, 1222 & 1522 Grain Carts**

| # | Description | Part. No. |
|----|---|-----------|
| 1 | Housing Set (70-001114) | JM0025053 |
| 2 | Bearing, 32210 (71-20017) | JM0025054 |
| 3 | Bearing Cone, 3780 (71-20044) | JM0025055 |
| 4 | Bearing Cup, 3720 (71-20033) | JM0025056 |
| 5 | 1-3/4" Input Shaft & Gear Assembly (74-60123) | JM0025057 |
| 6 | 2" Output Shaft & Gear Assembly (74-60125) | JM0025058 |
| 7 | End Cap Seal, 2" x .276" (71-40016) | JM0025060 |
| 8 | Seal, 1.75" x 2.717 x .513 (71-40052) | JM0025061 |
| 9 | Seal, 2 x 3.196 x .433 (71-40080) | JM0025062 |
| 10 | End Cap Seal, 3.19 x .315 (71-40079) | JM0025063 |
| 11 | Spacer (71-50160) | JM0025064 |
| 12 | Spacer (71-50161) | JM0025065 |
| 13 | Spacer (71-50172) | JM0025066 |
| 14 | 1/2" Bushing 1/8" Relief Plug (72-20011) | JM0025067 |
| 15 | 1/2" Pipe Plug (72-20007) | JM0025068 |
| 16 | Cap Screw 3/8"-16 UNC x 2.52" (72-0002) | JM0025069 |
| 17 | 130 Degree Gearbox Complete (130-22W) | JM0018677 |

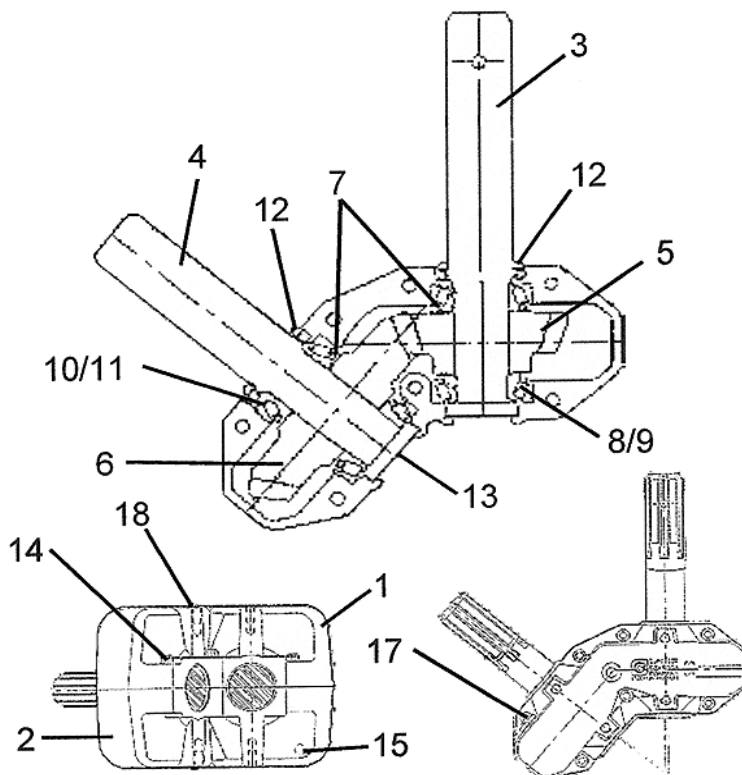
Takes 3 Quart (96 Ounces) of EP 80-90
Gearbox Lubricant.



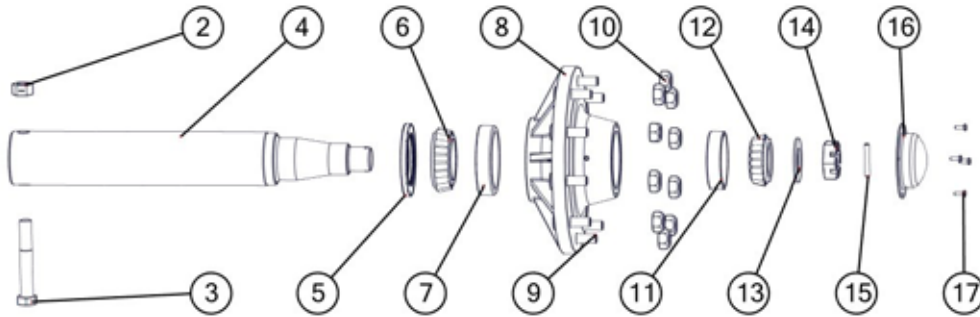
**130 Degree Gearbox Assembly for 18" Diameter Augers (SUPERIOR)
For Model 812 Grain Carts (TURBO AUGER)**

| # | Description | Part. No. |
|----|--------------------------------------|-----------|
| 1 | Casting, Upper Half (A0150) | JM0025088 |
| 2 | Casting, Lower Half (A0149) | JM0025089 |
| 3 | 1-3/4" Input Shaft (A0142) | JM0025090 |
| 4 | 1-3/4" Output Shaft (A0143) | JM0025091 |
| 5 | 18 Tooth Gear (H61S18) | JM0025092 |
| 6 | 29 Tooth Gear (H61S29) | JM0025093 |
| 7 | Shim, Arbor (H00101-01) | JM0025094 |
| 8 | Bearing, Cup (414276) | JM0025077 |
| 9 | Bearing, Cone (514137) | JM0025078 |
| 10 | Bearing, Cup (413620) | JM0025095 |
| 11 | Bearing, Cone (413687) | JM0025096 |
| 12 | Seal (617285) | JM0025097 |
| 13 | End Cap (400301) | JM0025076 |
| 14 | Bolt (438225) | JM0025085 |
| 15 | Plug (400300) | JM0025080 |
| 16 | Bushing (4003VB) | JM0025073 |
| 17 | Plug, Vent (2003PR) | JM0025081 |
| 18 | Plug (200300) | JM0025075 |
| 19 | 130 Degree Gearbox Complete (H130-9) | JM0017840 |

Takes 3/4 Quart (24 Ounces) of EP 80-90
Gearbox Lubricant.



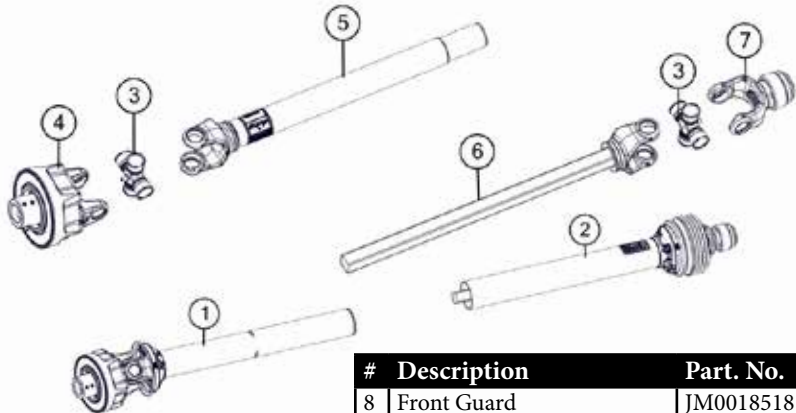
HUB & SPINDLE ASSEMBLY 250-10
For Models 1112, 1312, 1412, 1122, 1222 & 1522 Single
Grain Carts with 6" Diameter Spindles



| # | Description | Part. No. |
|----|---|-----------|
| 1 | Hub and Spindle Assembly Complete with 3/4"-16 Studs and Nuts (HSA-1075-34) | JM0025709 |
| 1 | Hub and Spindle Assembly Complete with 22MM Studs and Nuts (HSA-1075-22) | JM0019927 |
| 2 | 1"-8 Gr5 Z Centerlock Hex Nut (HLN-1) | JM0002149 |
| 3 | 1"-8 x 8" Gr5 Z Hex Bolt (165450) | JM0001487 |
| 4 | 6" Spindle - 29-3/4" Long (628) | JM0019102 |
| 5 | Seal 55179 (Type C) for G250-10,G300-10B, Spring-assisted (CR55179) | JM0019179 |
| 6 | Large Bearing (71455) | JM0019112 |
| 7 | Large Race (71750) | JM0019198 |
| 8 | Hub with studs & nuts (13.19 bolt circle) (11.13 pilot)(H25000) | JM0019300 |
| 8 | Hub with large and small races 3/4"-16 Studs & Nuts (1050 & 1075 Carts prior to 2006) (H25000-34) | JM0019927 |
| 9 | Stud 22MM 1.5 x 9MM 3.55L 1.005 Knurl (22-MMS) | JM0019178 |
| 9 | 3/4"-16 Wheel Stud (for 1050 and 1075 carts prior to 2006)(750-35) | JM0025710 |
| 10 | 22 MM Lug Nut (22-MMNW) | JM0019192 |
| 10 | 3/4"-16 Wheel Nut (for 1050 and 1075 carts prior to 2006)(913571) | JM0018958 |
| 11 | Small Race (653) | JM0019195 |
| 12 | Small Bearing (663) | JM0019177 |
| 13 | Large Spindle Washer (913632)(EM-25M) | JM0019106 |
| 14 | Large Castle Nut (SF-2512) | JM0019108 |
| 15 | 3/8" X 3-1/2" Z Roll Pin (3754) | JM0020001 |
| 16 | 6" Diameter Spindle Dust Cap (D-25000) | JM0019109 |
| 17 | 1/4"-20 X 1" Gr5 Z Hex Bolt (141G5B) | JM0002095 |

Power Take-Off (PTO) Shaft Assembly
1-3/4" Weasler - Black in Color
Used on all Extended Reach Grain Carts

| # | Description | Part. No. |
|---|----------------------------|-----------|
| 1 | Back Half PTO | JM0018513 |
| 1 | Back Half PTO (XL) | JM0030331 |
| 2 | 1-3/4" Front Half PTO | JM0018514 |
| 2 | 1-3/4" Front Half PTO (XL) | JM0030330 |
| 2 | 1-3/8" Front Half PTO | JM0024367 |
| 2 | 1-3/8" Front Half PTO (XL) | JM0030640 |
| 3 | 55ECross Kit | JM0018449 |
| 4 | Auto Clutch | JM0018500 |
| 5 | Yoke, Tube & Sleeve | JM0018519 |
| 5 | Yoke, Tube & Sleeve (XL) | JM0031647 |
| 6 | Yoke & Shaft Assembly | JM0018520 |
| 6 | Yoke & Shaft Assembly (XL) | JM0031648 |
| 7 | 1-3/4" Spring Lock Yoke | JM0018506 |
| 7 | 1-3/8" Spring Lock Yoke | JM0024353 |



| # | Description | Part. No. |
|---|--------------------------|-----------|
| 8 | Front Guard | JM0018518 |
| 8 | Front Guard (XL) | JM0030642 |
| 8 | Back Guard | JM0018517 |
| 8 | Back Guard (XL) | JM0030645 |
| 9 | 1-3/4" PTO Complete | JM0018443 |
| 9 | 1-3/4" PTO Complete (XL) | JM0030332 |
| 9 | 1-3/8" PTO Complete | JM0024333 |
| 9 | 1-3/8" PTO Complete (XL) | JM0030641 |

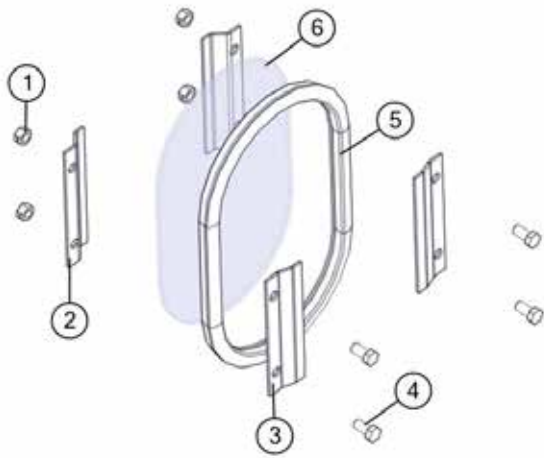
HUB & SPINDLE ASSEMBLY W-891
1012 Grain Cart with 4-1/2" Diameter Stress-Proof Spindle

| # | Description | Part. No. |
|----|--|-----------|
| 1 | Hub and Spindle Assembly Complete (1000-20)(Non-Scale)(HSA-1000) | JM0019942 |
| 2 | 1"-8 Gr5 Z Centerlock Hex Nut | JM0002149 |
| 3 | 1" x 7" Gr5 Z Hex Bolt (165400) | JM0016689 |
| 4 | 4-1/2" x 20-1/4" Spindle (1144 Stress-Proof)(281900S) | JM0019937 |
| 5 | Seal (6" OD) 1-906979 (CR-43771) | JM0018955 |
| 6 | Large Bearing (910346) | JM0018849 |
| 7 | Large Race (HM212049) (910344) | JM0018848 |
| 8 | 891 Hub with large and small races, 22MM studs & nuts(W-891) | JM0021227 |
| 9 | 22MM x 90MM Wheel Stud (22-MMS) | JM0019178 |
| 10 | 22 MM Lug Nut (22-MMNW) | JM0019192 |
| 11 | Small Race (HM212011) | JM0018854 |
| 12 | Small Bearing (910347) | JM0018852 |
| 13 | Spindle Washer (913635) | JM0015900 |
| 14 | Large Castle Nut (912973) | JM0015899 |
| 15 | Cotter Pin (905945) | JM0018956 |
| 16 | Dust Cap (909921) | JM0018954 |
| 17 | 1/4"-20 X 1" Gr5 Z Hex Bolt (141G5B) | JM0002095 |

HUB & SPINDLE ASSEMBLY W-881
For Model 812 and all Walker Equipped Grain Carts with 4-1/2" Diameter Spindles

| # | Description | Part. No. |
|----|---|-----------|
| 1 | Hub and Spindle Assembly Complete 20-1/4" (3/4" Studs) (HSA-650D) (Walking Tandem Duals)(FAA) | JM0019940 |
| 1 | Hub and Spindle Assembly Complete 30-1/2" (3/4" Studs) (Standard Axle) | JM0022057 |
| 1 | Hub and Spindle Assembly Complete 30-1/2" (22MM Studs) (Standard Axle) | JM0034488 |
| 1 | Hub and Spindle Assembly Complete 27-1/2" (3/4" Studs)(30.5 Tire & Smaller) (Fully Adjustable Axle) | JM0034483 |
| 1 | Hub and Spindle Assembly Complete 27-1/2" (22MM Studs)(900 Tire & Larger) (Fully Adjustable Axle) | JM0034354 |
| 2 | 1"-8 Gr5 Z Centerlock Hex Nut | JM0002149 |
| 3 | 1" x 7" Gr5 Z Hex Bolt (165400) | JM0016689 |
| 4 | 4-1/2" Spindle x 30-1/2" (281900) | JM0018794 |
| 4 | 4-1/2" x 27-1/2" Spindle (For 5-Point Scale) | JM0007132 |
| 4 | 4-1/2" x 20-1/4" Spindle (1144 Stress-Proof) | JM0019937 |
| 5 | Seal (6" OD - 3-3/4" ID) for hub w/ scales (since March 2000)(750-35) | JM0021456 |
| 5 | Seal (6" OD) 1-906979 (CR-43771) | JM0018955 |
| 6 | Large Bearing (910346) | JM0018849 |
| 7 | Large Race (HM212049) | JM0018848 |
| 8 | Hub with large and small races, 3/4" studs & nuts (13.19 bolt circle) (11.13 pilot)(W-881) | JM0020510 |
| 8 | Hub with large and small races, 22MM studs & nuts (13.19 bolt circle) (11.13 pilot)(W-881) | JM0034356 |
| 9 | 3/4"-16 Wheel Stud (913564) | JM0018957 |
| 9 | 22mm Wheel Stud | JM0019178 |
| 10 | 3/4"-16 Wheel Nut (913571) | JM0018958 |
| 10 | 22mm Wheel Nut | JM0019192 |
| 11 | Small Race (HM212011) | JM0018854 |
| 12 | Small Bearing (910347) | JM0018852 |
| 13 | Spindle Washer (913635) | JM0015900 |
| 14 | Large Castle Nut (912973) | JM0015899 |
| 15 | Cotter Pin (905945) | JM0018956 |
| 16 | Dust Cap (909921) | JM0018954 |
| 17 | 1/4"-20 X 1" Gr5 Z Hex Bolt (141G5B) | JM0002095 |

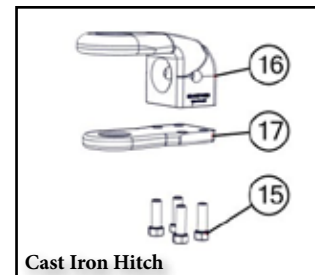
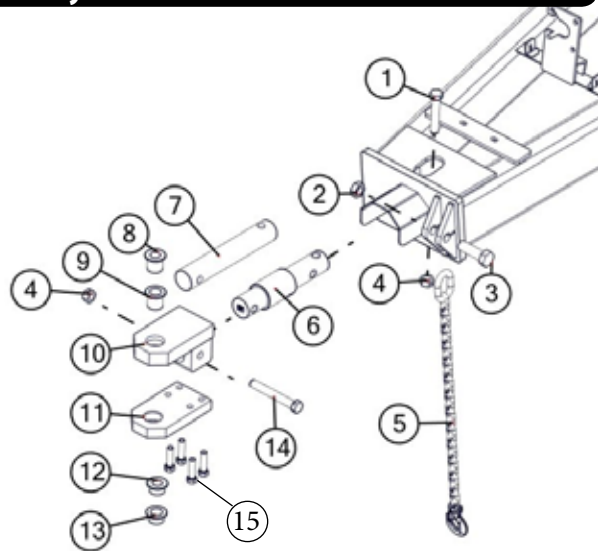
Inspection Windows



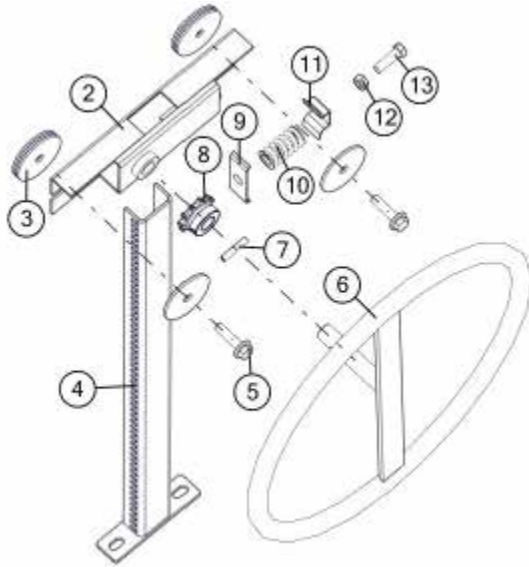
| # | Description | Part. No. |
|---|---|-----------|
| 1 | 3/8"-16 Gr5 Z Centerlock Hex Nut (161900) | JM0001512 |
| 2 | Inside Window Brace (WB-4) | JM0000253 |
| 3 | Outside Window Brace (WB-4B) | JM0000256 |
| 4 | 3/8-16 x 3/4" Gr5 Z Hex Bolt (161000) | JM0001663 |
| 5 | Oval Window Grommet (112500) | JM0002454 |
| 6 | Oval Window (IW-71212) | JM0002455 |
| 7 | Inspection Window Kit (IWK-1) | JM0025752 |

Hitch Assembly

| # | Description | Part. No. |
|----|---|-----------|
| 1 | 1"-8 x 5-1/2" Gr5 Z Hex Bolt | JM0002110 |
| 2 | 1-1/4"-7 Gr5 Z Nylon Locking Hex Jam Nut | JM0027201 |
| 3 | 1-1/4"-7 x 4" Gr8 Z Hex Bolt | JM0026073 |
| 4 | 1"-8 Gr5 Z Centerlock Hex Nut | JM0002149 |
| 5 | 40k Lb Safety Chain | JM0029261 |
| 6 | Digi-Star - 2-7/8" Weigh Bar | JM0000355 |
| 7 | 2-7/8" Long Non Scale Hitch Bar | JM0025227 |
| 8 | 1-1/4" Pin adapter for GC Spade Hitch | JM0019032 |
| 9 | 1-1/2" Pin adapter for GC Clevis Hitch Tang | JM0014203 |
| 10 | Hitch Weldment | JM0017978 |
| 11 | Draw Bar | JM0017976 |
| 12 | 1-1/4" Pin adapter for GC Clevis Hitch Tang | JM0019031 |
| 13 | 1-1/2" Pin adapter for GC Clevis Hitch Tang | JM0014206 |
| 14 | 1"-8 x 7-1/2" Gr8 YZ Hex Bolt | JM0017944 |
| 15 | 3/4"-16 x 3" Fine Thread Hex Bolt | JM0002107 |
| 16 | Cast Iron Clevis | JM0020529 |
| 17 | Cast Iron Spade | JM0020527 |

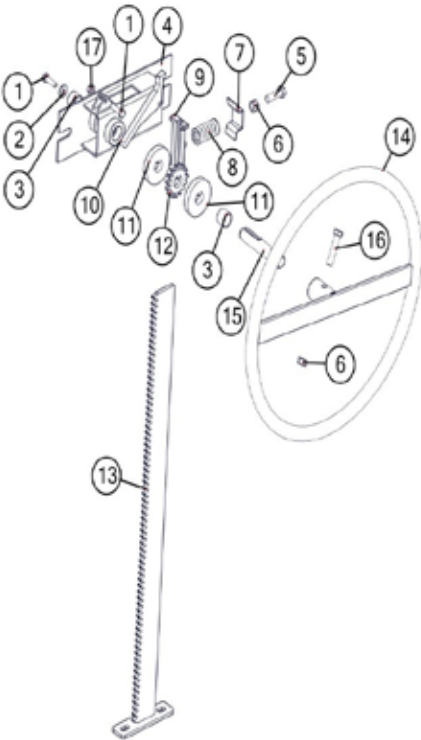


Door Wheel Assembly (2015 & Older)



| # | Description | Part. No. |
|----|---|-----------|
| 1 | Complete Door Wheel Assembly (20-1/4") (CWA250) | JM0018884 |
| 1 | Complete Door Wheel Assembly (28") (CWA750) | JM0018879 |
| 2 | Welded Guide Assembly (WGA-1034) | JM0018864 |
| 3 | 2-1/2" USS Flat Washer (12-W-212) | JM0018982 |
| 4 | Track Assembly (20-1/4") (TA-2014) | JM0018861 |
| 4 | Track Assembly (28") (TA-28) | JM0018860 |
| 5 | 3/8-16 x 1-1/2" Gr5 Z SF Hex Bolt (161200) | JM0001633 |
| 6 | Wheel Pin & Strap Assembly (WPS-250) | JM0018871 |
| 7 | 1-3/8" Roll Pin (138RP) | JM0009896 |
| 8 | 11 Tooth Sprocket (11T40) | JM0018872 |
| 9 | Galvanized Clip (GL-250) | JM0002850 |
| 10 | Spring (DS-250) | JM0001688 |
| 11 | Metal Clip (MC-250) | JM0002851 |
| 12 | 3/8"-16 Gr5 Z Hex Nut (161850) | JM0001707 |
| 13 | 3/8"-16 x 1-1/4" Gr5 Z Hex Bolt (161160) | JM0016675 |

Door Wheel Assembly (2016 & Newer)

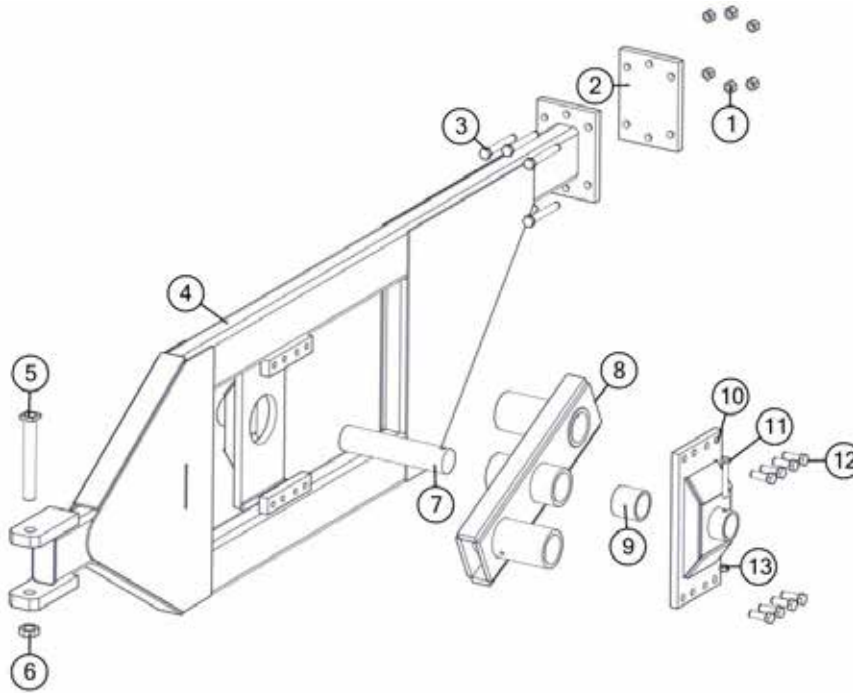


| # | Description | Part. No. |
|----|--|-----------|
| 1 | 1/4"-20 x 1" Gr5 Z Hex Bolt (141G5B) | JM0002095 |
| 2 | 1/4" USS Flat Washer (14-W) | JM0003090 |
| 3 | .754 ID x .874 OD x .625 LG Bronze Bushing (BB-34) | JM0009455 |
| 4 | Nylon Guided Rack Housing Weldment | JM0030635 |
| 5 | 3/8"-16 x 1-1/4" Gr5 Z Hex Bolt (161160) | JM0016675 |
| 6 | 3/8"-16 Gr5 Z Hex Nut | JM0001707 |
| 7 | Rack Track Guide (Scrubber Plate) (MC-250) | JM0002851 |
| 8 | Small Compression Spring (DS-250) | JM0001688 |
| 9 | Nylon Track Guide | JM0029354 |
| 10 | Flip Lock | JM0029459 |
| 11 | Keyway Washer | JM0029454 |
| 12 | 15 Tooth Sprocket - 3/4" Bore w/ Key | JM0029455 |
| 13 | Nylon Guided Rack Track 20-1/4" Weldment | JM0030651 |
| 13 | Nylon Guided Rack Track 27-1/2" Weldment | JM0030634 |
| 14 | Rack Wheel Weldment | JM0028898 |
| 15 | Stub Shaft - 3/4" x 4-1/8" with Threaded End | JM0029440 |
| 16 | Complete Nylon Door Wheel Assembly (20-1/4") | JM0030652 |
| 16 | Complete Nylon Door Wheel Assembly (27-1/2") | JM0029460 |

Walking Tandem Dual Wheel Assembly

*-R = Red
*-B = Blue
*-G = Green
*-Y = Yellow

*Add color to
Part Number

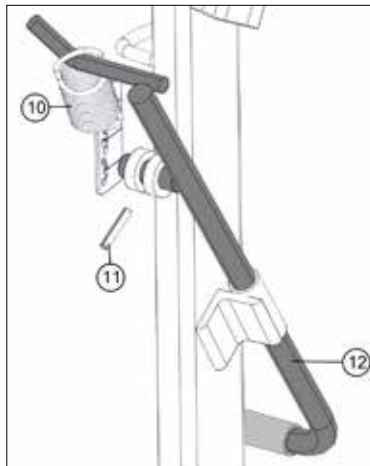
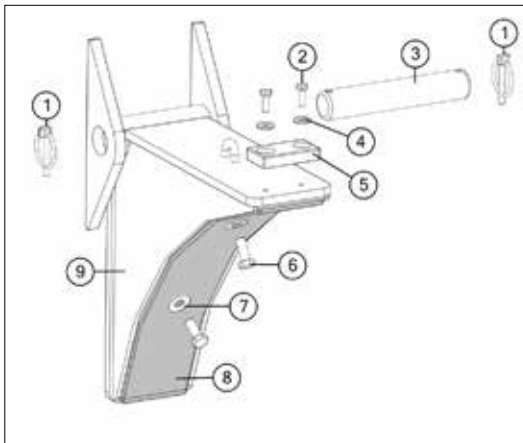


| # | Description | Part. No. |
|----|---|------------|
| 1 | 1" -14 Gr8 YZ Hex Nut (1HNG8) | JM0019926 |
| 2 | 1-1/4" x 8" x 14" Clamp Plate (114814CP) | JM0010145 |
| 3 | 1" -14 x 7-1/2" Gr8 YZ Hex Bolt (1712G8HB) | JM0019925 |
| 4 | Frame Weldment (Left)(FW-1L) | JM0019922* |
| 4 | Frame Weldment (Right)(FW-1R) | JM0010082* |
| 5 | 1-3/4" x 13-1/2" Bolt (1341312HB) | JM0019981 |
| 6 | 1-3/4"-12 Z Gr5 Hex Jam Nut (134JN) | JM0009752 |
| 7 | 3-3/4" Dia. Pivot Pin (334PP) | JM0019928 |
| 8 | Pivot Beam Weldment (left)(PBW-1L) | JM0010170* |
| 8 | Pivot Beam Weldment (right)(PBW-1R) | JM0010170* |
| 9 | 3 3/4"ID x 4 1/2"OD Bronze Bushing (BB-334) | JM0010570 |
| 10 | Pivot Center Weldment (PCW-1) | JM0010076* |
| 11 | 3/4" x 5 1/2" Grade 5 Bolt (34512G5HB) | JM0015522 |
| 12 | 1" -14 x 3" Grade 8 Bolt (13G8B) | JM0019924 |
| 13 | 3/4" Lock Nut (34-LN) | JM0002147 |

*-R = Red
*-B = Blue
*-G = Green
*-Y = Yellow

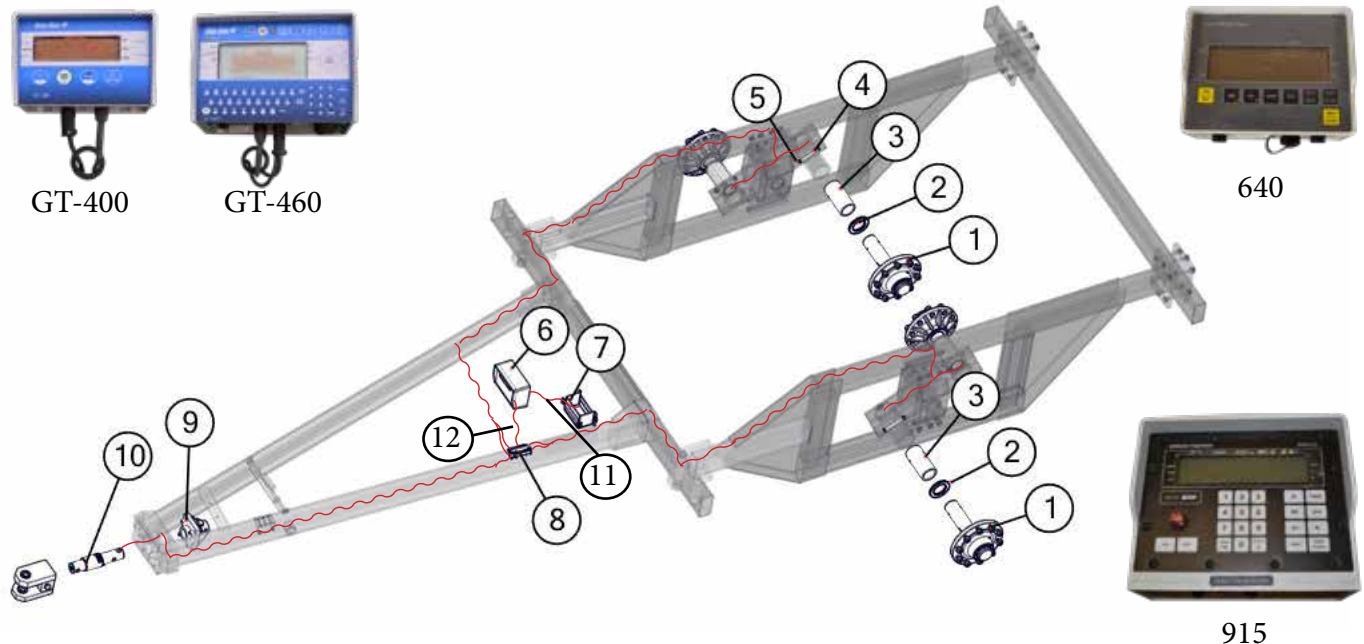
When requesting an item with color, end the part number with -R, -B, -G, or -Y. (e.g. JM0000000-R)

Auger Rest Assembly



| # | Description | Part. No |
|----|-------------------------------|-----------|
| 1 | 1/4" Dia. Snap Ring | JM0001870 |
| 2 | 1/4"-20 x 3/4" Gr5 Z Hex Bolt | JM0001507 |
| 3 | Flip Up Auger Rest Pin | JM0028218 |
| 4 | 1/4" USS Flat Washer | JM0003090 |
| 5 | Auger Rest Pad | JM0020802 |
| 6 | 3/8"-16 x 1" Gr5 Z Hex Bolt | JM0001592 |
| 7 | 3/8" USS Flat Washer | JM0003061 |
| 8 | Auger Rest Guide Plate | JM0024456 |
| 9 | Transport Auger Rest | JM0020538 |
| 10 | Throw Handle Spring | JM0024976 |
| 11 | 1-3/8" Roll Pin | JM0009896 |
| 12 | Auger Rest Throw Handle | JM0021843 |
| 13 | Auger Rest Cable (Not Shown) | JM0037202 |

WEIGH SCALE SYSTEMS
Digi-Star & Weigh Tronix Scale System
For 1112, 1312, & 1412 with Walking-Tandem Duals



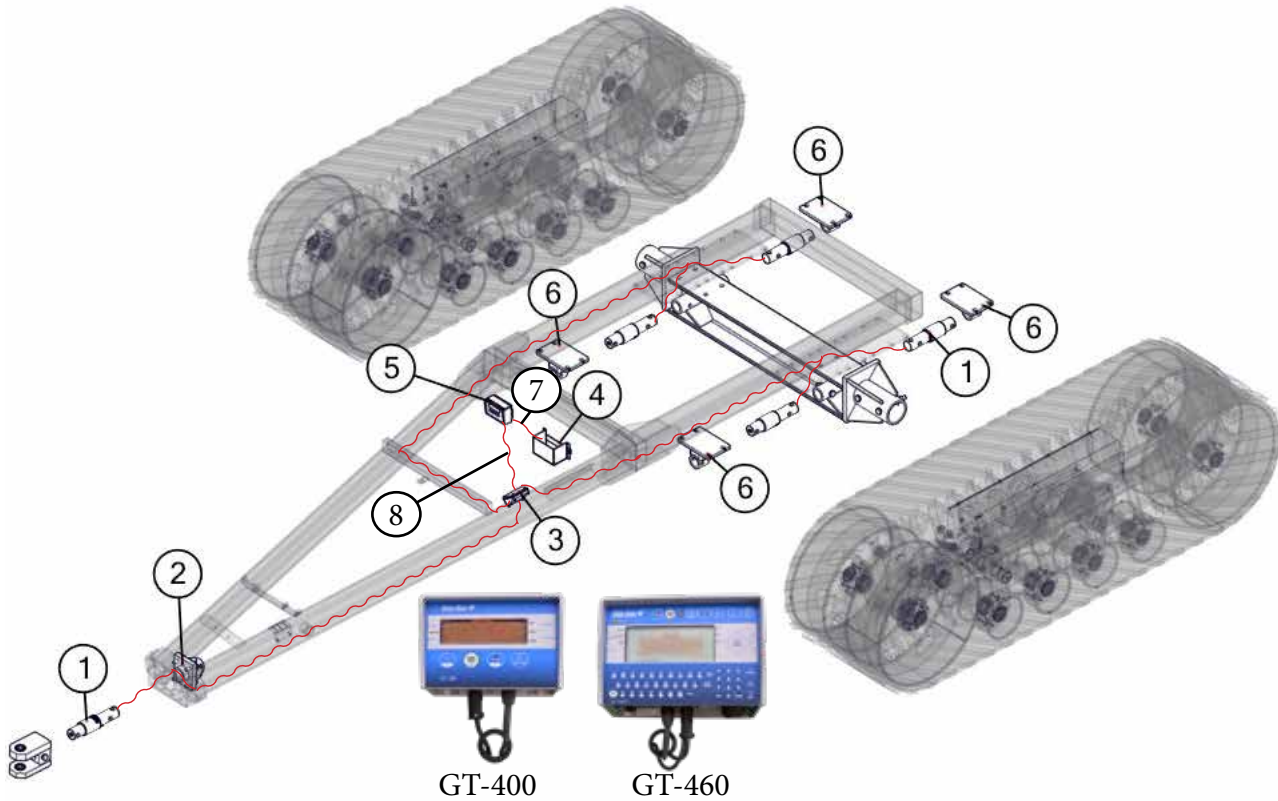
For Models 1110 Grain Carts
Digi-Star Scale System

| # | Description | Part. No. |
|----|---|-----------|
| 1 | 3-3/4" Weigh Spindle, Digi Star (375WS) | JM0021451 |
| 2 | Seal for Hub (37605SA) | JM0021456 |
| 3 | 4-1/2" OD Adapter Pipe Tubing (ATP-375-GS) | JM0021453 |
| 4 | 5/8"-11 x 6-1/2" Gr5 Zinc Hex Bolt | JM0019979 |
| 5 | 5/8"-11 Gr5 Z Centerlock Hex Nut | JM0002146 |
| 6 | GT400 Indicator with Serial Port EZ-150, EZ-2000, EZ-400 (GT400) | JM0019040 |
| 6 | GT 460 Indicator "Upgrade" includes serial port, downloader USB port and alpha-numeric key pad (GT-460) | JM0015453 |
| 7 | Battery Box with Strap (BB-2) | JM0000365 |
| 8 | 5 Point Junction Box (JB-5) | JM0019038 |
| 9 | Weigh Bar Receiver Weldment Scales 2-7/8" (WBW-278) | JM0000019 |
| 10 | Digi-Star - 2-7/8" Weigh Bar, 1000-20 through 1501-22, 5 Point Scale System (278WB-T) | JM0000355 |
| 11 | Power Cord to Battery, Digi Star (PC-1) | JM0025812 |
| 12 | 30' Standard Cable for J-Box to Indicator (141837) | JM0025820 |
| 13 | Indicator Mounting Bracket, GT460 (MBI-1) | JM0019648 |
| 14 | Indicator Mounting Bracket, GT400 (MBI-1S) | JM0000361 |
| 15 | 10' Long Extension Cord to Mount Indicator in Cab (ECI-1) | JM0025815 |
| 16 | 20' Long Extension Cord to Mount Indicator in Cab (ECI-2) | JM0025816 |
| 17 | Optional "Y" Cable to Connect both Printer and Downloader (403037) | JM0025817 |
| 18 | Flashdrive memory stick-programmed (114991) | JM0025819 |

For Models 1310 and 1410 Grain Carts
Weigh-Tronix Scale Systems

| # | Description | Part. No. |
|----|--|-----------|
| 1 | 4-1/2" Weigh Spindle, Weigh-Tronix (450WTS) | JM0019970 |
| 2 | Seal for Hub (37605SA) | JM0021456 |
| 4 | 5/8"-11 x 6-1/2" Gr5 Zinc Hex Bolt | JM0019979 |
| 5 | 5/8"-11 Gr5 Z Centerlock Hex Nut | JM0002146 |
| 6 | 640 Indicator w/serial port (640) | JM0019650 |
| 6 | 915 Indicator (upgrade) w/serial port & alpha-numeric key pad (915) | JM0025823 |
| 7 | Battery Box with Strap (BB-2) | JM0000365 |
| 8 | 4 point Junction Box, replaces all older 3 pt junction boxes (JB-5-WT) | JM0019960 |
| 9 | Weigh Bar Receiver Weldment Scales 2-7/8" (WBW-278) | JM0000019 |
| 10 | 2-7/8" Weigh Bar, Weigh-Tronix (278WB) | JM0019969 |
| 11 | Power Cord to Battery, Weigh Tronix (PC-2) | JM0025824 |
| 12 | Power Cord to Battery, 2 pin, Weigh Tronix (PC-2-2) | JM0025825 |
| 13 | Standard Cable for J-box to Indicator (50613-0020) | JM0025826 |
| 14 | Indicator Mounting Bracket, 640 & 915 (MBI-2) | JM0019967 |
| 15 | Extension Cord to Mount Indicator In Cab (ECI-1WT) | JM0025827 |

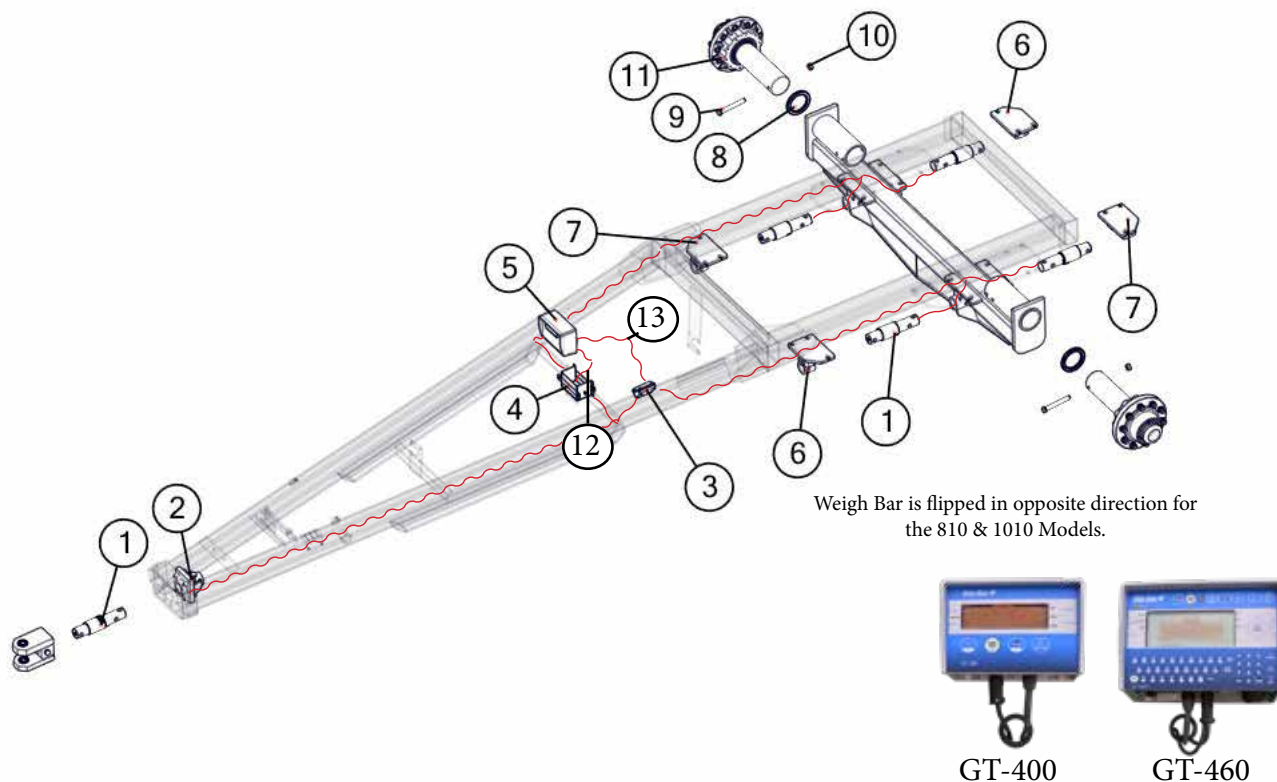
WEIGH SCALE SYSTEMS
Digi-Star 5-Point Scale System
For Grain Carts equipped with *STORM TRACKER* track systems



WEIGH SCALE SYSTEMS
Weigh Scale System for Grain Carts Equipped with *STORM TRACKER*
Track Systems and 5-Point Scales Systems

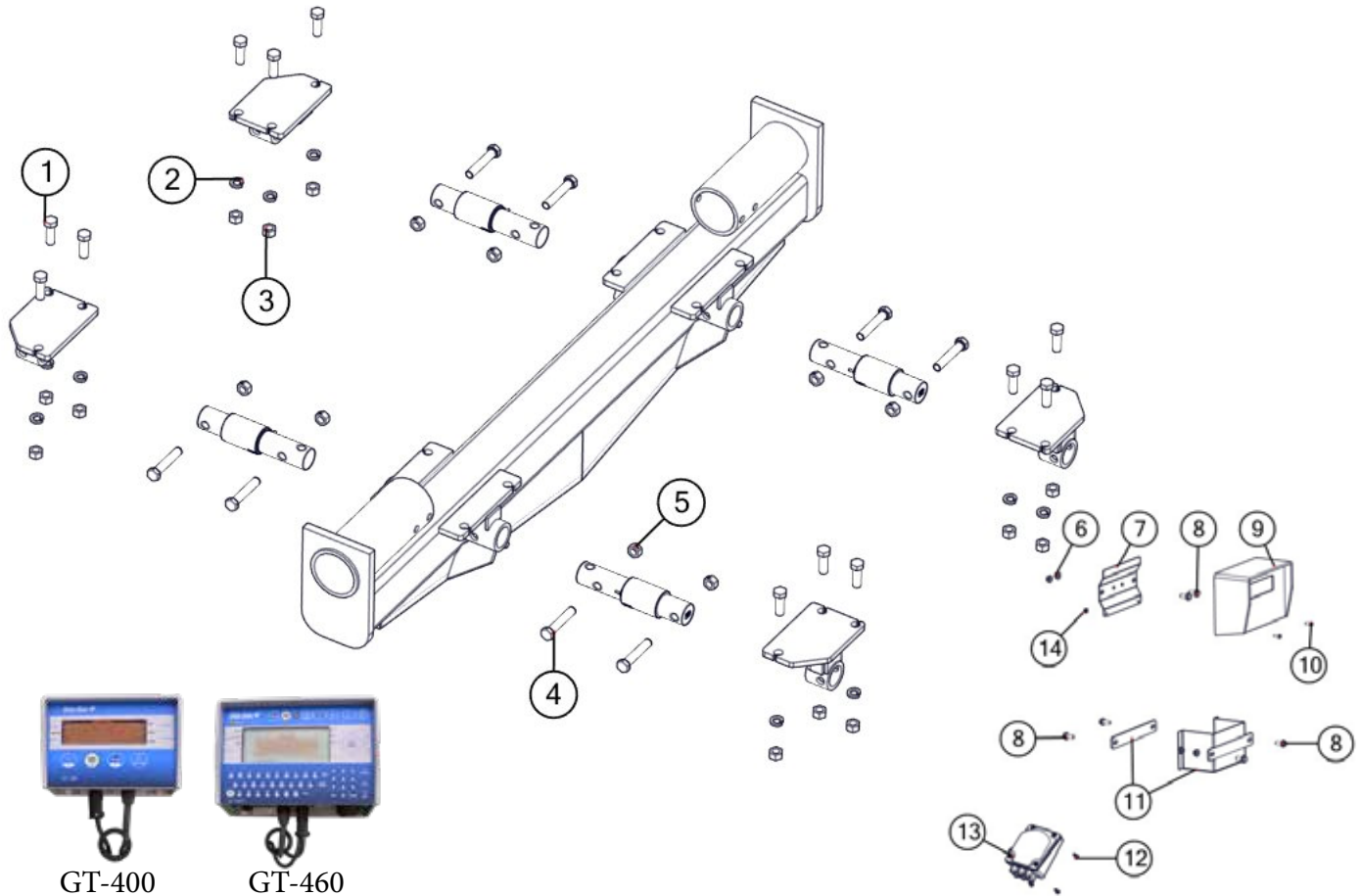
| # | Description | Part. No. |
|----|---|-----------|
| 1 | 2-7/8" Weigh Bar, 1" Pin Hole (278WB-T1) | JM0000355 |
| 1 | 2-7/8" Weigh bar, 5/8" Pin Hole (278WB-T) | JM0025856 |
| 2 | Weigh Bar Receiver Weldment Scales 2-7/8" (WBW-278) | JM0000019 |
| 3 | 5 Point Junction Box (JB-5) | JM0019038 |
| 4 | Battery Box with Strap (BB-2) | JM0000365 |
| 5 | GT400 Indicator with Serial Port EZ-150, EZ-2000, EZ-400 (GT400) | JM0019040 |
| 5 | GT 460 Indicator "Upgrade" includes serial port, downloader USB port and alpha-numeric key pad (GT-460) | JM0015453 |
| 6 | 2-7/8" Weigh Bar Weldment for Track Beam (WBW-278T) | JM0018207 |
| 7 | Power Cord to Battery, Digi Star (PC-1) | JM0025812 |
| 8 | 30' Standard Cable for J-Box to Indicator (141837) | JM0025820 |
| 9 | 10' Long Extension Cord to Mount Indicator in Cab (ECI-1) | JM0025815 |
| 10 | 20' Long Extension Cord to Mount Indicator in Cab (ECI-2) | JM0025816 |
| 11 | Optional "Y" Cable to Connect both Printer and Downloader (403037) | JM0025817 |
| 12 | Flashdrive memory stick-programmed (114991) | JM0025819 |

WEIGH SCALE SYSTEMS
Digi-Star 5-Point Scale System
For Single Wheel Applications with Bolt-on Axles



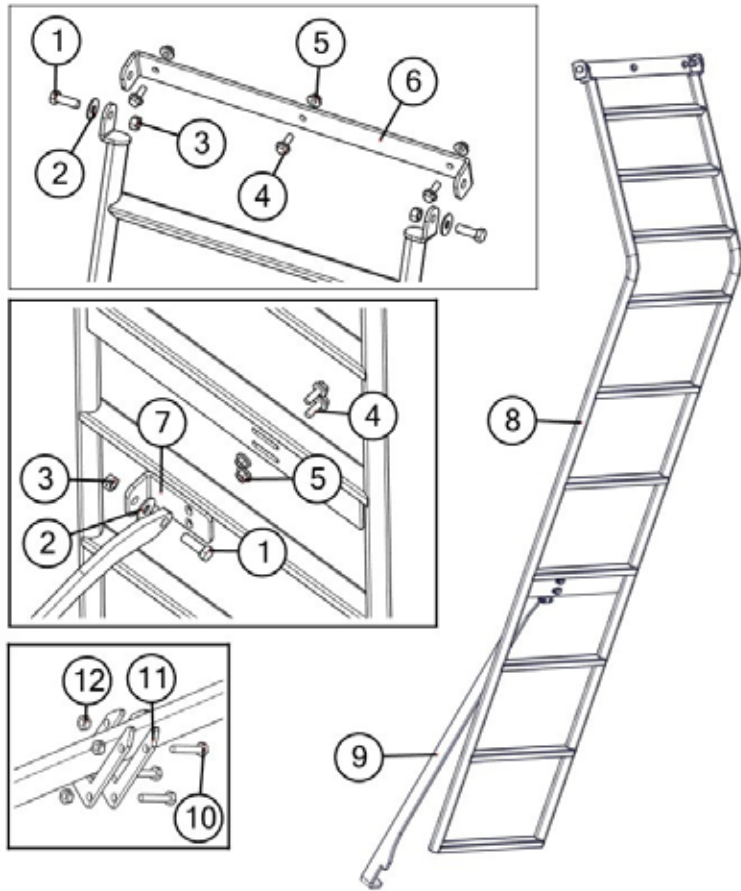
| # | Description | Part. No. |
|----|---|-----------|
| 1 | 2-7/8" Weigh Bar, 1" Pin Hole (278WB-T1) | JM0000355 |
| 2 | Weigh Bar Receiver Weldment Scales 2-7/8" (WBW-278) | JM0000019 |
| 3 | 5 Point Junction Box (JB-5) | JM0019038 |
| 4 | Battery Box with Strap (BB-2) | JM0000365 |
| 5 | GT400 Indicator with Serial Port EZ-150, EZ-2000, EZ-400 (GT400) | JM0019040 |
| 5 | GT 460 Indicator "Upgrade" includes serial port, downloader USB port and alpha-numeric key pad (GT-460) | JM0015453 |
| 6 | 2-7/8" Weigh Bar Weldment, Rear Right, Front Left, Digi-Star, | JM0018226 |
| 6 | 2-7/8" Weigh Bar Weldment, Rear Right, Front Left, Digi-Star, 810, 1010 | JM0018985 |
| 7 | 2-7/8" Weigh Bar Weldment, Rear Left, Front Right, Digi-Star | JM0018228 |
| 7 | 2-7/8" Weigh Bar Weldment, Rear Left, Front Right, Digi-Star, 810, 1010 | JM0000354 |
| 8 | Seal for Hub (37605SA) | JM0021456 |
| 9 | 1"-8 x 8" Gr5 Z Hex Bolt | JM0001487 |
| 10 | 1"-8 Gr5 Z Centerlock Hex Nut | JM0002149 |
| 11 | Hub Assembly | ----- |
| 12 | Power Cord to Battery, Digi Star (PC-1) | JM0025812 |
| 13 | 30' Standard Cable for J-Box to Indicator (141837) | JM0025820 |
| 14 | 10' Long Extension Cord to Mount Indicator in Cab (ECI-1) | JM0025815 |
| 15 | 20' Long Extension Cord to Mount Indicator in Cab (ECI-2) | JM0025816 |
| 16 | Optional "Y" Cable to Connect both Printer and Downloader (403037) | JM0025817 |
| 17 | Flashdrive memory stick-programmed (114991) | JM0025819 |

WEIGH SCALE SYSTEMS
Digi-Star 5-Point Scale System Hardware
Hardware for Single Wheel and Track System Bolt-on Axles



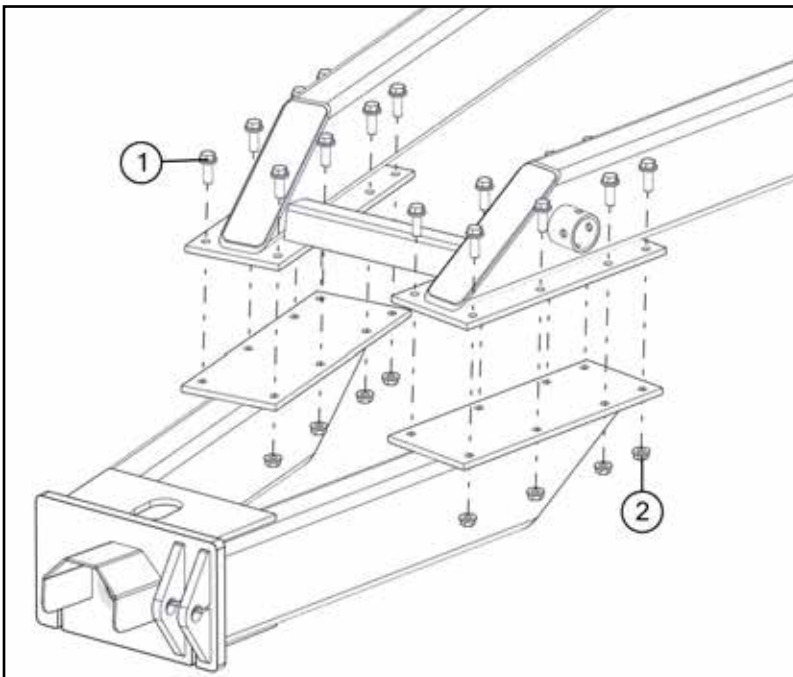
| # | Description | Part. No. |
|----|---|-----------|
| 1 | 1"-8 x 3" Gr5 Z Hex Bolt | JM0016686 |
| 2 | 1" Zinc Finish Lock Washer | JM0019203 |
| 3 | 1"-8 Gr5 Z Hex Nut | JM0002127 |
| 4 | 1"-8 x 5-1/2" Gr5 Z Hex Bolt | JM0002110 |
| 5 | 1"-8 Gr5 Z Centerlock Hex Nut | JM0002149 |
| 6 | 3/8"-16 Gr5 Z SF Hex Nut | JM0002152 |
| 7 | Indicator Mounting Bracket, GT460 (MBI-1) | JM0019648 |
| 7 | Indicator Mounting Bracket, GT400 (MBI-1S) | JM0000361 |
| 8 | 3/8"-16 x 1" Gr5 Z SF Hex Bolt | JM0002092 |
| 9 | GT400 Indicator with Serial Port EZ-150, EZ-2000, EZ-400 (GT400) | JM0019040 |
| 9 | GT 460 Indicator "Upgrade" includes serial port, downloader USB port and alpha-numeric key pad (GT-460) | JM0015453 |
| 10 | 1/4"-20 x 3/4" Gr5 Z Hex Bolt | JM0001507 |
| 11 | Battery Box with Strap (BB-2) | JM0000365 |
| 12 | 1/4" x 3/4" Self Tapping Screw | JM0001570 |
| 13 | 5 Point Junction Box (JB-5) | JM0019038 |
| 14 | 1/4"-20 Gr5 Z SF Hex Nut | JM0001630 |

Ladder Assembly



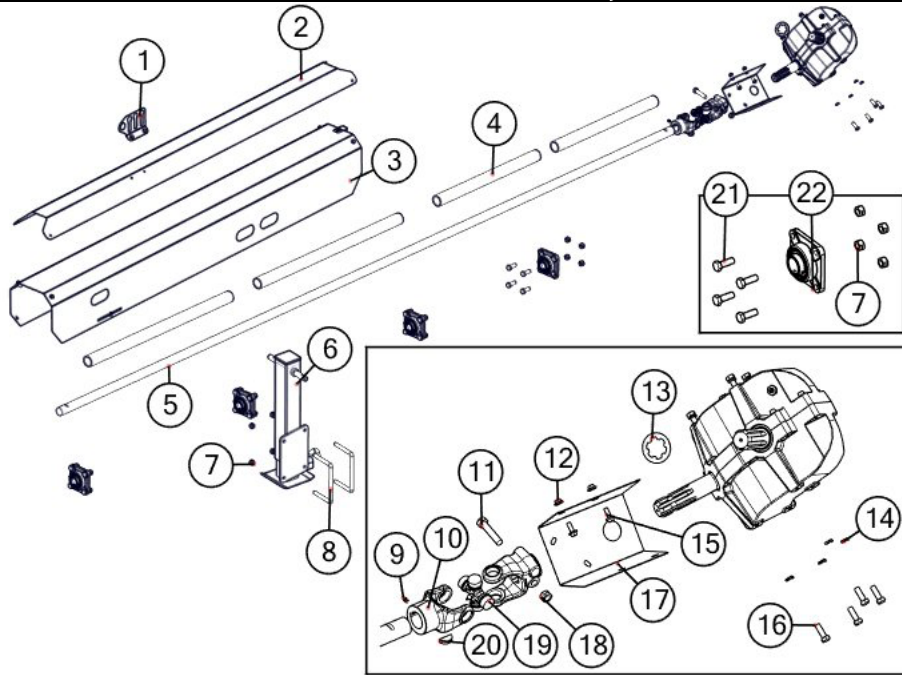
| # | Description | Part. No. |
|----|----------------------------------|-----------|
| 1 | 1/2"-13 x 1-1/2" Gr5 Z Hex Bolt | JM0002100 |
| 2 | 1/2" USS Flat Washer | JM0003082 |
| 3 | 1/2"-13 Gr5 Z Centerlock Hex Nut | JM0001511 |
| 4 | 3/8"-16 x 1" Gr5 Z SF Hex Bolt | JM0002092 |
| 5 | 3/8"-16 Gr5 Z SF Hex Nut | JM0002152 |
| 6 | Side Swing Ladder Mount Bracket | JM0012865 |
| 7 | Swing Out Ladder Adjustable Tab | JM0020977 |
| 8 | Ladder Weldment | JM0012858 |
| 9 | Ladder Support Leg | JM0012926 |
| 10 | 1/4"-20 x 1-1/4" Gr5 Z Hex Bolt | JM0016673 |
| 11 | Ladder Guide | JM0021947 |
| 12 | 1/4"-20 Gr5 Z Centerlock Hex Nut | JM0001505 |

Bolt-On Frame (812)



| # | Description | Part. No. |
|---|------------------------------------|-----------|
| 1 | 5/8"-11 x 1-3/4" Gr5 Z SF Hex Bolt | JM0027674 |
| 2 | 5/8"-11 Gr5 Z SF Hex Nut | JM0001522 |

Driveline Assembly

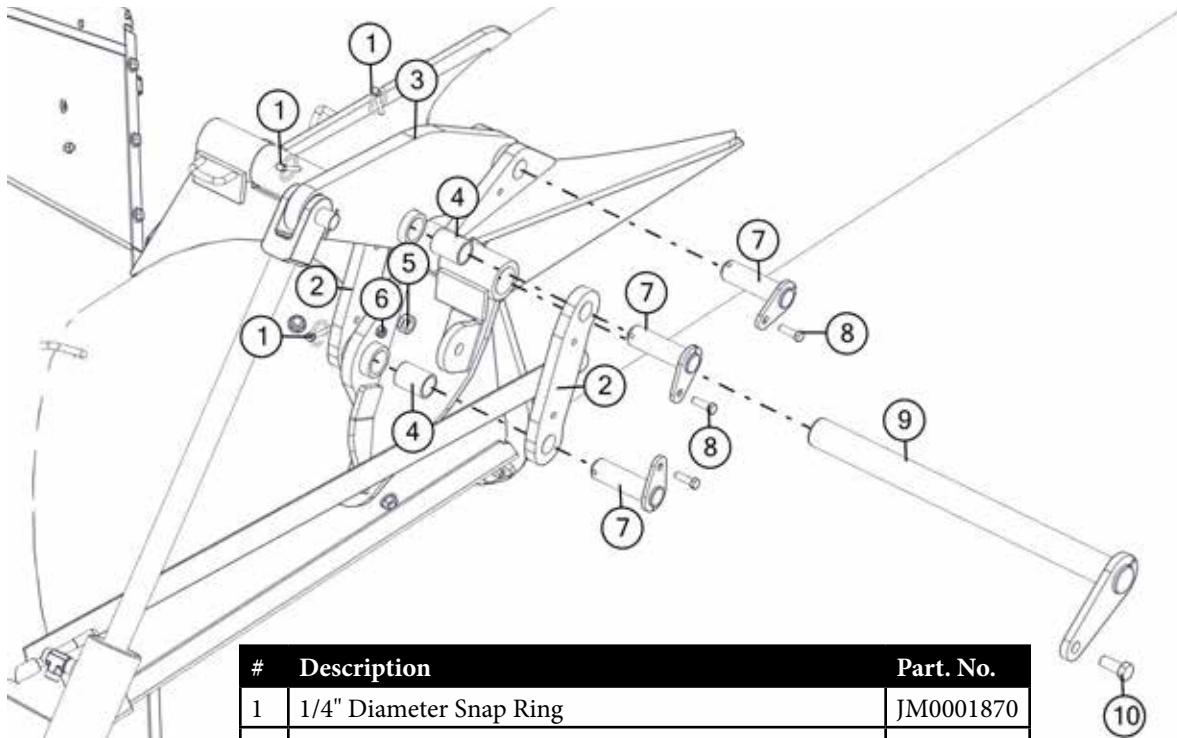


| # | Description | Part. No. |
|----|---|-----------|
| 1 | Hydraulic Hose Holder (3 Slots) | JM0021437 |
| 2 | Hydraulic Hose Shield (812) | JM0025770 |
| 2 | Hydraulic Hose Shield (1012, 1112, 1122, 1222) | JM0022344 |
| 2 | Hydraulic Hose Shield (1312,1412, 1522) | JM0020941 |
| 3 | PTO Shield (812) | JM0025769 |
| 3 | PTO Shield (1012, 1112) | JM0026079 |
| 3 | PTO Shield (1312,1412) | JM0020935 |
| 4 | PVC (Cut to length) | JM0027151 |
| 5 | 130" Driveline (812) | JM0036413 |
| 5 | 164-1/2" Driveline (1012, 1112, 1122, 1222) | JM0026002 |
| 5 | 190" Driveline (1312, 1412, 1522) | JM0026235 |
| 6 | Grain Cart Jack (812) | JM0001480 |
| 6 | Heavy Duty Grain Cart Jack (1012,1112,1312,1412,1522) | JM0020936 |
| 7 | 5/8"-11 Gr5 Z Centerlock Hex Nut | JM0002146 |
| 8 | Square U-Bolt | JM0024199 |
| 9 | 3/8"-16 x 1/2" Set Screw | JM0019044 |
| 10 | 44 Series U-Joint | JM0017957 |
| 11 | 5/8"-11 x 3" Gr5 Z Hex Bolt | JM0002105 |
| 12 | 3/8"-16 Gr5 Z SF Hex Nut | JM0002152 |
| 13 | 18" & 20" Gearbox Washer | JM0000083 |
| 13 | 22" Gearbox Washer | JM0020638 |
| 14 | 1/2" Zinc Finish Lock Washer | JM0019021 |
| 15 | 3/8"-16 x 1" Gr5 Z SF Hex Bolt | JM0002092 |
| 16 | 1/2"-13 x 1-1/2" Gr5 Z Hex Bolt | JM0002100 |
| 17 | Knuckle Guard | JM0012698 |
| 18 | 5/8"-11 Gr5 Z Centerlock Hex Nut | JM0002146 |
| 19 | Cross Kit 44R, CK-44R | JM0017958 |
| 20 | 3/8" x 1-1/2" Half Moon Key | JM0018772 |
| 21 | 5/8"-11 x 1-3/4" Gr5 Z Hex Bolt | JM0016681 |
| 22 | 1-3/4" 4 Bolt Flange Bearing | JM0018774 |

*-R = Red
 *-B = Blue
 *-G = Green
 *-Y = Yellow

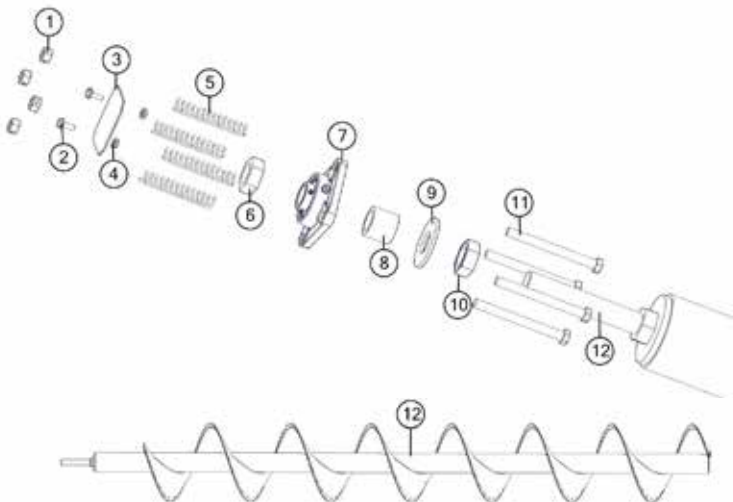
When requesting an item with color, end the part number with -R, -B, -G, or -Y. (e.g. JM0000000-R)

Top Auger Linkage



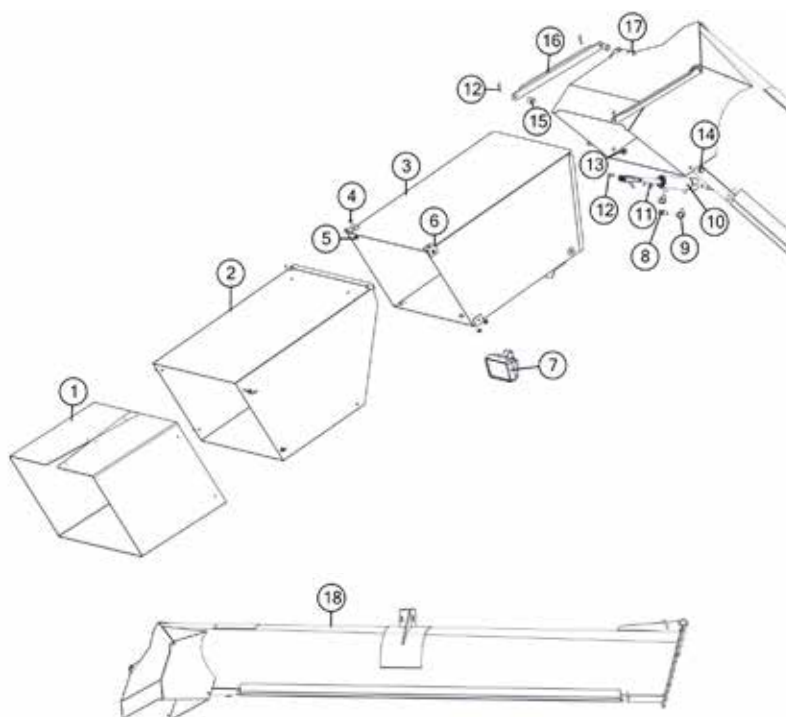
| # | Description | Part. No. |
|----|--|-----------|
| 1 | 1/4" Diameter Snap Ring | JM0001870 |
| 2 | Master Link (12 Series w/ keeper) | JM0035075 |
| 3 | Main Fold Link (12 Series w/ keeper) | JM0034658 |
| 4 | 1-1/4"ID x 1-1/2"ID x 2" Long Sleeve | JM0021957 |
| 5 | 5/8"-11 Gr5 Z Centerlock Hex Nut | JM0002146 |
| 6 | 3/8"-16 Gr5 Z Centerlock Hex Nut | JM0001512 |
| 7 | 1-1/4" Pin Keeper (12 Series) | JM0035930 |
| 8 | 3/8"-16 x 1-1/4" Gr5 Z Hex Bolt | JM0016675 |
| 9 | 18" Hinge Pin (19" Long)(12 Series 18" Augers) | JM0022086 |
| 9 | 22" Hinge Pin (23" Long)(12 Series 20" Augers) | JM0024966 |
| 10 | 5/8"-11 x 1-1/2" Gr5 Z Hex Bolt | JM0002103 |

Upper Flighting



| # | Description | Part. No. |
|----|--|-----------|
| 1 | 1/2"-13 Gr5 Z Centerlock Hex Nut | JM0001511 |
| 2 | 1/4"-20 x 3/4" Gr5 Z SF Hex Bolt | JM0001642 |
| 3 | Head Pan Hole Cover | JM0036019 |
| 4 | 1/4"-20 Gr5 Z SF Hex Nut | JM0001630 |
| 5 | Top Bearing Springs, 4-1/2" | JM0018559 |
| 6 | 1-1/4"-12 PN Gr5 Hex Jam Nut | JM0001606 |
| 7 | 1-1/4" Flange Bearing (Top Flighting) | JM0018560 |
| 8 | Top Auger Collar (1.28 ID x 1.25 long) | JM0021646 |
| 9 | 1-3/8" Grommet Washer | JM0015731 |
| 10 | 1-1/4"-12 PN Gr5 Hex Jam Nut | JM0001606 |
| 11 | 1/2"-13 x 5-1/2" HHMB Grade 5 Zinc | JM0001498 |
| 12 | 18" Upper Flighting (812) | JM0036981 |
| 12 | 20" Upper Flighting (All 20" 12- Series) | JM0035058 |

Top Auger Assembly

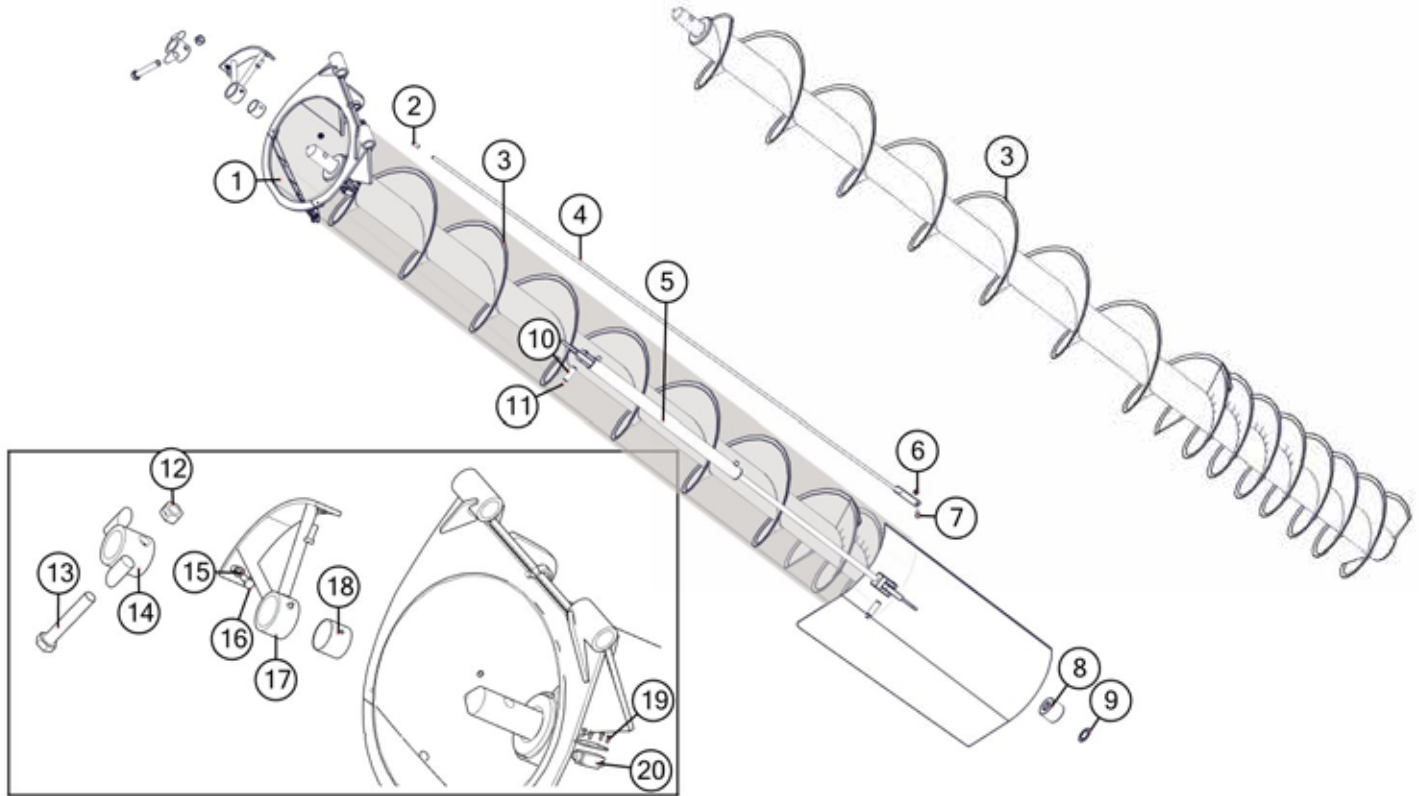


| # | Description | Part. No. |
|----|--|------------|
| 1 | 4 Sided Telescoping Spout Rubber Extension 20" | JM0034417 |
| 2 | Outer Tip Spout (12 Series) | JM0034365 |
| 3 | Inner Tip Spout (12 Series) | JM0034291 |
| 4 | 5/16"-18 x 5/8" Flat Head Bolt (Black) | JM0024448 |
| 5 | 5/16"-18 Gr5 Z SF Hex Nut | JM0014049 |
| 6 | Rubber Inside Spout Guide | JM0035132 |
| 7 | Field Light (LED, Grain Cart) | JM0000881 |
| 8 | 1/4" male NPTswivel with .032 orifice | JM0020113 |
| 9 | 1/4" male NPT x 1/4" female NPT rigid; 90 degree elbow | JM0020115 |
| 10 | 1-3/4" x 4" Hydraulic Cylinder | JM0018564 |
| 11 | 1/2" x 1-3/4" Pin | JM0018264 |
| 12 | Hair Pin for 1/4" Shaft | JM0031701 |
| 13 | 1/2"-13 Gr5 Z Centerlock Hex Nut | JM0001511 |
| 14 | 1/2"-13 x 1-1/2" Gr5 Z Hex Bolt | JM0002100 |
| 15 | 1" OD 9/16" ID x 3/4" L Nylon Spacer | JM0001962 |
| 16 | Telescoping Spout Main Linkage | JM0034363 |
| 17 | 1/2" x 1-1/2" Clevis Pin | JM0012363 |
| 18 | 18" Upper Auger Tube Weldment | JM0036583* |
| 18 | 20" Upper Auger Tube Weldment | JM0035994* |

*-R = Red
 *-B = Blue
 *-G = Green
 *-Y = Yellow

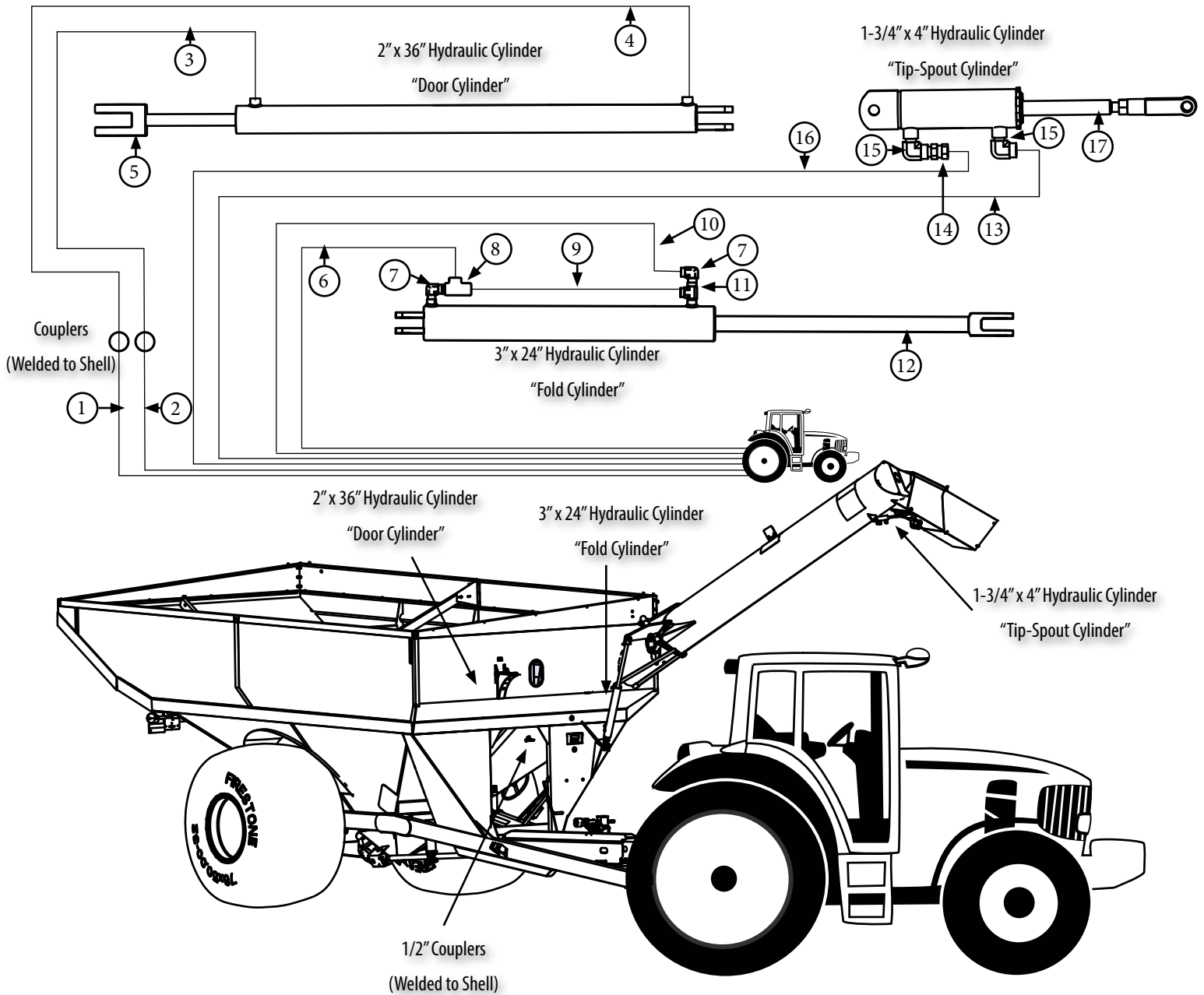
When requesting an item with color, end the part number with -R, -B, -G, or -Y. (e.g. JM0000000-R)

Lower Auger Assembly

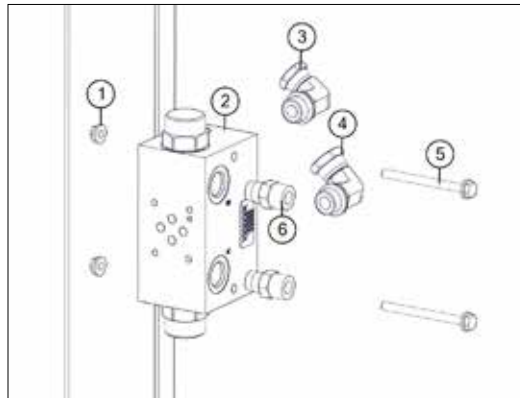
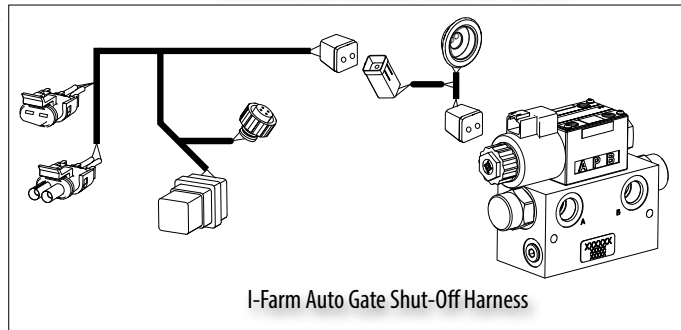
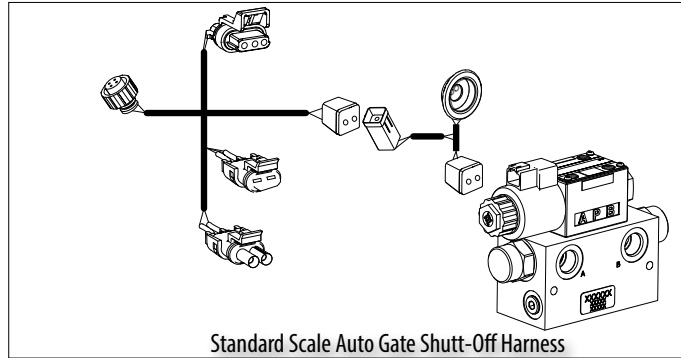


| # | Description | Part. No. | # | Description | Part. No. |
|---|---|-----------|----|-------------------------------------|-----------|
| 1 | Lower Auger Liner (812) | JM0037361 | 9 | 1-3/4" Gearbox Washer (18") | JM0000083 |
| 1 | Lower Auger Liner (1012,1112, 1122, 1222) | JM0037362 | 9 | 2" Gearbox Washer (20" & 22") | JM0020638 |
| 1 | Lower Auger Liner (1312,1412, 1522) | JM0037287 | 10 | 1" x 3" Clevis Pin | JM0003065 |
| 2 | Yellow Cap | JM0016842 | 11 | Cotter Pin (for 1" x 3" Clevis Pin) | JM0003064 |
| 3 | 18" Lower Flighting (812) | JM0036783 | 12 | 1"-8 Gr2 Z Centerlock Hex Nut | JM0002149 |
| 3 | 20" Lower Flighting (1012, 1112, 1122, 1222) | JM0035010 | 13 | 1"-8 x 6" Gr8 YZ Hex Bolt | JM0074245 |
| 3 | 20" Lower Flighting (1312,1412, 1522) | JM0035452 | 14 | 18" & 20" Drive Dog | JM0000093 |
| 4 | Indicator Rod Weldment (812) | JM0021282 | 15 | 1/2" Zinc Finish Lock Washer | JM0019021 |
| 4 | Indicator Rod Weldment (1012, 1112, 1122, 1222) | JM0027918 | 16 | 1/2" x 1-1/4" Gr5 Hex Bolt | JM0001513 |
| 4 | Indicator Rod Weldment (1312,1412, 1522) | JM0021282 | 17 | 18" Auger Hanger | JM0000090 |
| 5 | 2" x 36" Hydraulic Cylinder | JM0018523 | 17 | 20" Auger Hanger | JM0019655 |
| 6 | 1/2"-13 Gr5 Z Centerlock Hex Nut | JM0001511 | 18 | 2-1/2" ID Bronze Bushing | JM0016841 |
| 7 | 1/2" -13 x 1-1/4" Gr5 Z Hex Bolt | JM0001513 | 19 | M5-0.8 x 12 Gr8.8 Z Hex Bolt | JM0036046 |
| 8 | 1-3/4" Spline Shaft 2-1/2" OD x 3" | JM0016883 | 20 | Limit Switch (for Field Light) | JM0036040 |
| 8 | 2" Spline Shaft - 3-3/4" OD x 3" | JM0009701 | | | |

12 Series Hydraulic Hoses & Cylinders

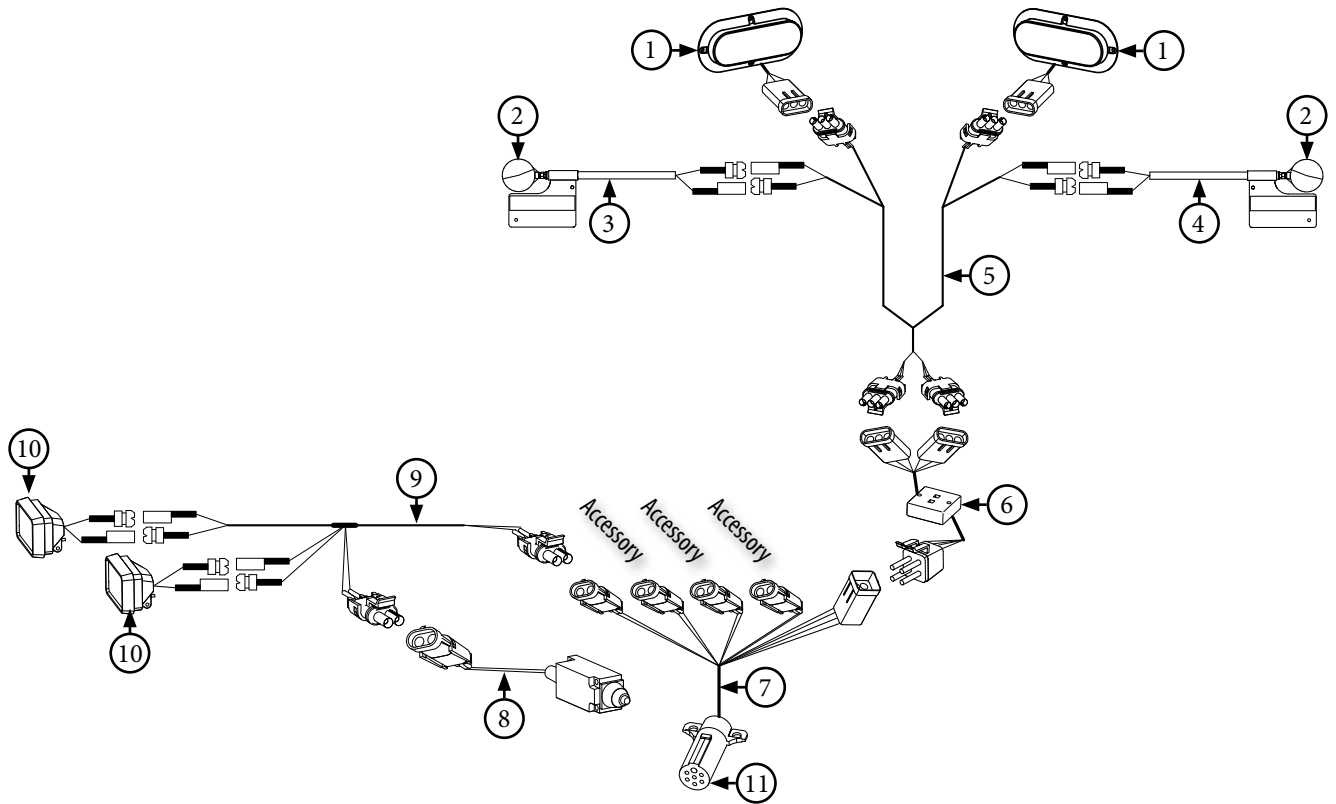


| # | Description | Part. No. | # | Description | Part. No. |
|---|---|-----------|----|---|-----------|
| 1 | Hydraulic Hose 1/4" x 212" (812) | JM0030611 | 9 | Lift Cylinder Hydraulic Hose 1/4" x 21" | JM0024896 |
| 1 | Hydraulic Hose 1/4" x 240" (1012, 1112, 1312, 1412) | JM0024985 | 10 | Hydraulic Hose 1/4" x 346" (812) | JM0027896 |
| 2 | Hydraulic Hose 1/4" x 212" (812) | JM0030611 | 10 | Hydraulic Hose 1/4" x 308" (1012, 1112, 1312, 1412) | JM0024984 |
| 2 | Hydraulic Hose 1/2" x 240" (1012, 1112, 1312, 1412) | JM0024985 | 11 | 3/8" male NPT x 3/8" female NPT x 3/8" female NPT; Street T | JM0018266 |
| 3 | Hydraulic Hose 1/4" x 61" (812) | JM0024905 | 12 | 3" x 24" Welded Cushion Cylinder | JM0019644 |
| 3 | Hydraulic Hose 1/4" x 43" (1012, 1112, 1312, 1412) | JM0024904 | 13 | Hydraulic Hose 1/4" x 456" (812) | JM0030610 |
| 4 | Hydraulic Hose 1/4" x 29" (812) | JM0030609 | 13 | Hydraulic Hose 1/4" x 474" (1012, 1112, 1312, 1412) | JM0024982 |
| 4 | Hydraulic Hose 1/2" x 43" (1012, 1112, 1312, 1412) | JM0024906 | 14 | 1/4" male NPT swivel with .032 orifice | JM0020113 |
| 5 | 2" x 36" Welded Cylinder | JM0018523 | 15 | 1/4" male NPT X 1/4" female NPT rigid; 90 degree elbow | JM0020115 |
| 6 | Hydraulic Hose 1/4" x 324" (812) | JM0030600 | 16 | Hydraulic Hose 1/4" x 456" (812) | JM0030610 |
| 6 | Hydraulic Hose 1/4" x 290" (1012, 1112, 1312, 1412) | JM0024983 | 16 | Hydraulic Hose 1/4" x 482" (1012, 1112, 1312, 1412) | JM0024982 |
| 7 | 3/8" female NPT x 1/2" male NPT; 90 degree elbow | JM0010292 | 17 | 1-3/4" x 4" Hydraulic Cylinder | JM0018564 |
| 8 | PC-37 Check Valve | JM0018233 | | | |



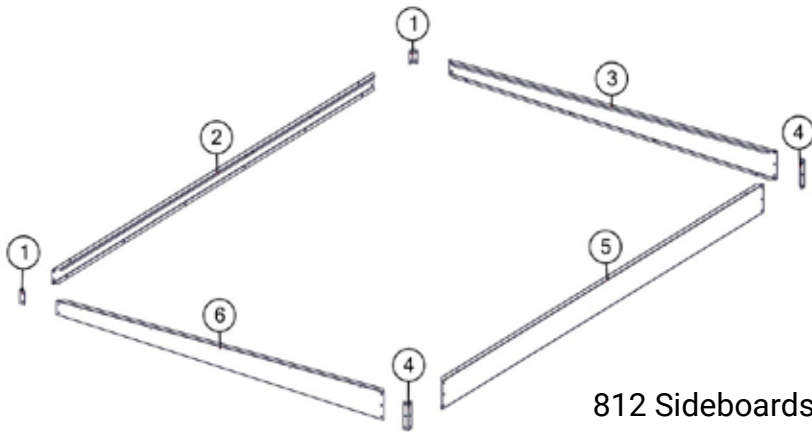
| # | Description | Part. No. |
|----|---|-----------|
| 1 | 1/4" Centerlock Hex Nut | JM0001630 |
| 2 | Auto Gate Valve | JM0026247 |
| 3 | 90 deg. Male Fitting 3/8"-1/2" (6901-08-06-NWO) | JM0027285 |
| 4 | 90 deg. Male Fitting 1/2" - 1/2" (6901-08-08-NWO) | JM0027286 |
| 5 | 1/4" x 3" Hex Bolt | JM0026812 |
| 6 | Straight Male Fitting (6900-08-06-0) | JM0030064 |
| 7 | Auto Gate Harness for Digi-Star Scale System | JM0026813 |
| 8 | Auto Gate Harness for I-Farm | JM0037374 |
| 9 | 1/4" x 43" Hydraulic Hose (Not Shown) | JM0024904 |
| 10 | 1/2" x 43" Hydraulic Hose (Not Shown) | JM0024906 |

Light Kit Assembly



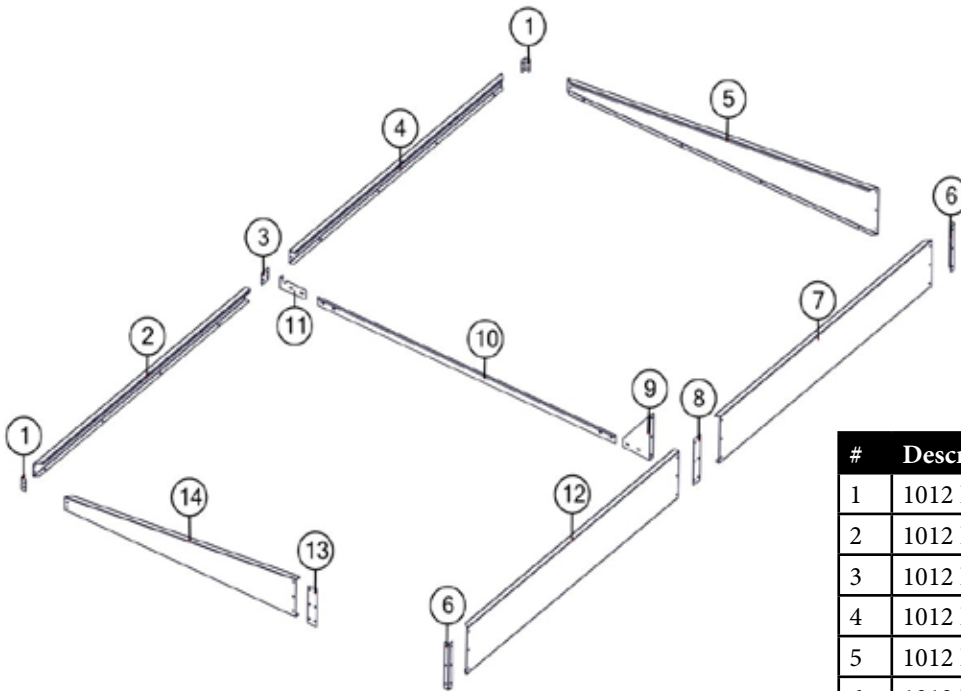
| # | Description | Part. No. |
|----|---|-----------|
| 1 | Red Light (LED) | JM0034389 |
| 2 | Amber Light Only | JM0018819 |
| 3 | Extendable Amber Light Assembly (Left Side) | JM0018817 |
| 4 | Extendable Amber Light Assembly (Right Side) | JM0018826 |
| 5 | Wiring Harness for Rear Lights (Each) | JM0020437 |
| 6 | Light Enhancer | JM0010566 |
| 7 | Main Wiring Harness with 7-Prong Connector End | JM0020439 |
| 8 | Limit Switch (for field light) | JM0036040 |
| 9 | Field Light Wire | JM0020438 |
| 10 | Field Light (LED, Grain Cart)(Bullet Lead Ends) | JM0000881 |
| 11 | 7-Prong Connector End Only | JM0010528 |

Sideboards for 812 & 1012 Models



812 Sideboards

| # | Description | Part. No |
|---|----------------------------|-----------|
| 1 | 812 Low Sideboard Corner | JM0013113 |
| 2 | 812 Low Sideboard | JM0014019 |
| 3 | 812 Endboard Back | JM0014021 |
| 4 | 812 High Sideboard Corner | JM0013112 |
| 5 | 812 High Sideboard | JM0014020 |
| 6 | 812 Endboard Front | JM0014022 |
| 7 | 812 Sideboard Set Complete | JM0027980 |



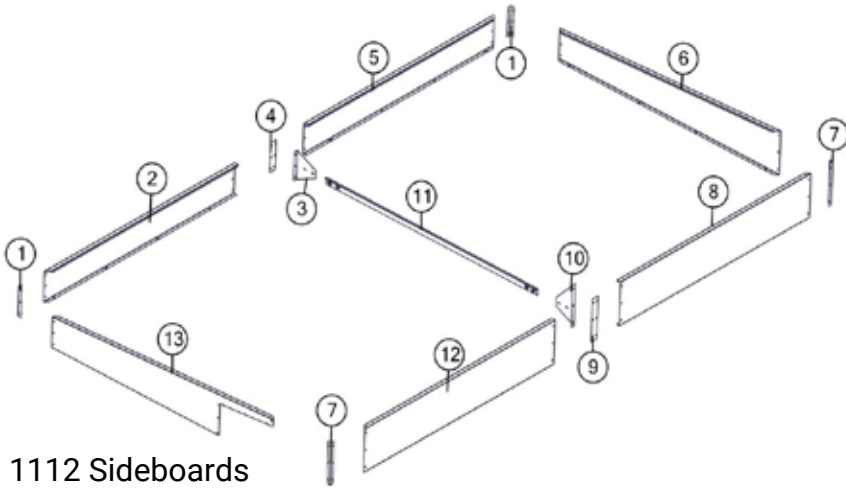
1012 Sideboards

| # | Description | Part. No |
|----|--------------------------------|-----------|
| 1 | 1012 Low Sideboard Corner | JM0013701 |
| 2 | 1012 Front Low Sideboard | JM0013675 |
| 3 | 1012 Low Sideboard Splice | JM0013702 |
| 4 | 1012 Back Low Sideboard | JM0013674 |
| 5 | 1012 Back Endboard | JM0013678 |
| 6 | 1012 High Sideboard Corner | JM0013699 |
| 7 | 1012 Back Half High Sideboard | JM0013671 |
| 8 | 1012 High Sideboard Splice | JM0013700 |
| 9 | 1012 High Sideboard Brace | JM0013731 |
| 10 | Sideboard Brace | JM0020624 |
| 11 | 1012 Low Sideboard Brace | JM0013732 |
| 12 | 1012 Front Half High Sideboard | JM0026160 |
| 13 | 1012 GS Front Endboard Splice | JM0013703 |
| 14 | 1012 Front Endboard | JM0013676 |
| 15 | 1012 Sideboard Set Complete | JM0041386 |

*-R = Red
 *-B = Blue
 *-G = Green
 *-Y = Yellow

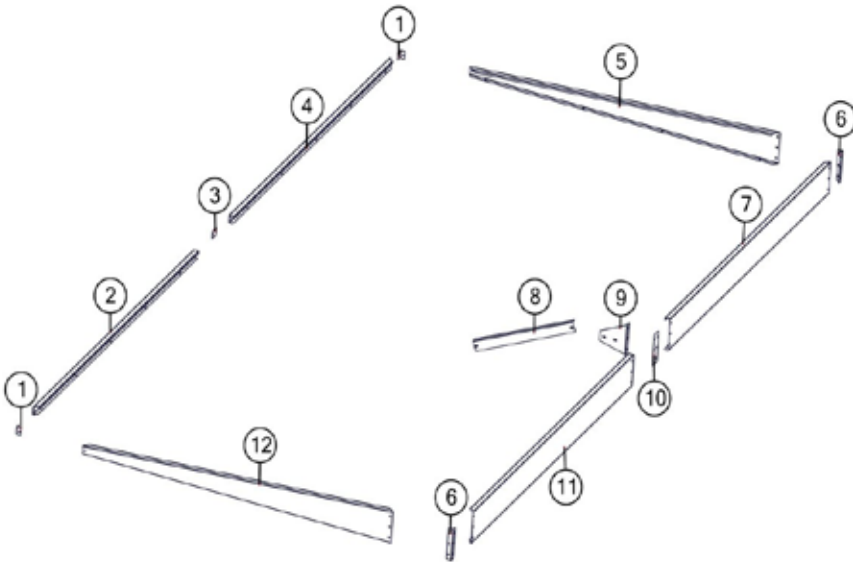
When requesting an item with color, end the part number with -R, -B, -G, or -Y. (e.g. JM0000000-R)

Sideboards For 1112, 1312, & 1412 Models



1112 Sideboards

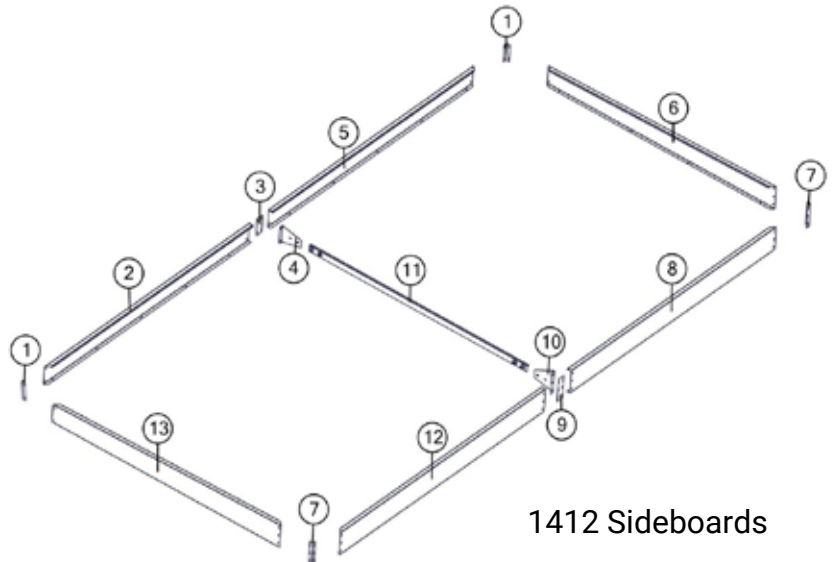
| # | Description | Part. No |
|----|--------------------------------|-----------|
| 1 | 1112 Low Sideboard Corner | JM0015092 |
| 2 | 1112 Low Sideboard (front) | JM0015086 |
| 3 | 1112 Low Sideboard Brace | JM0015083 |
| 4 | 1112 Low Sideboard Splice | JM0015093 |
| 5 | 1112 Low Sideboard (Back) | JM0015087 |
| 6 | 1112 Back Endboard | JM0015089 |
| 7 | 1112 High Sideboard Corner | JM0015090 |
| 8 | 1112 Back Half High Sideboard | JM0015085 |
| 9 | 1112 High Sideboard Splice | JM0015091 |
| 10 | 1112 High Sideboard Brace | JM0015095 |
| 11 | Sideboard Brace | JM0020624 |
| 12 | 1112 Front Half High Sideboard | JM0026953 |
| 13 | 1112 Front Endboard | JM0037388 |
| 14 | 1112 Sideboard Set Complete | JM0041387 |



1312 Sideboards

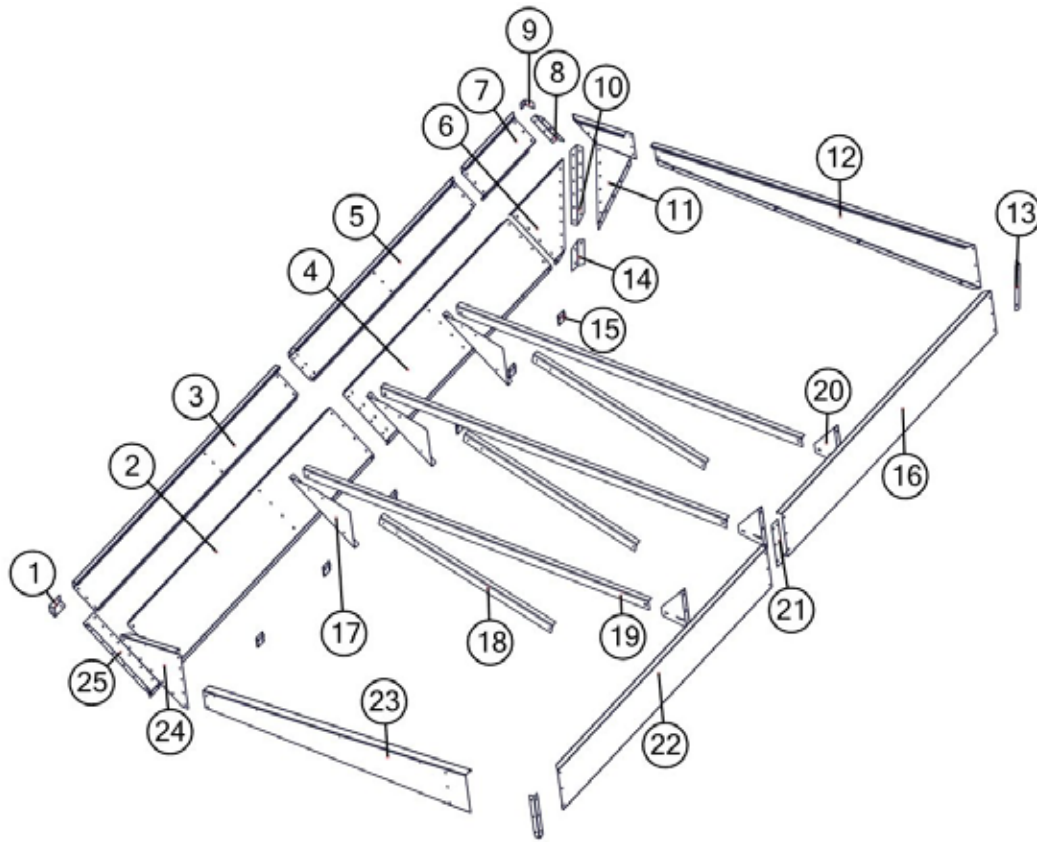
| # | Description | Part. No |
|----|-------------------------------|-----------|
| 1 | 1312 Low Sideboard Corner | JM0009703 |
| 2 | 1312 Front Half Low Sideboard | JM0017351 |
| 3 | 1312 Low Sideboard Splice | JM0009704 |
| 4 | 1312 Back Half Low Sideboard | JM0017350 |
| 5 | 1312 Back Endboard | JM0009596 |
| 6 | 1312 High Sideboard Corner | JM0009700 |
| 7 | 1312 Back Half High Sideboard | JM0017484 |
| 8 | 1312 48" Inside Brace | JM0029921 |
| 9 | 1312 High Sideboard Brace | JM0021202 |
| 10 | 1312 High Sideboard Splice | JM0009702 |
| 11 | 1312 Font Half High Sideboard | JM0020342 |
| 12 | 1312 Front End Board | JM0020347 |
| 13 | 1312 Sideboard Set Complete | JM0041388 |

| # | Description | Part. No |
|----|-------------------------------|-----------|
| 1 | 1412 Low Sideboard Corner | JM0020613 |
| 2 | 1412 Front Half Low Sideboard | JM0020609 |
| 3 | 1412 Low Sideboard Splice | JM0020614 |
| 4 | 1412 Low Sideboard Brace | JM0020611 |
| 5 | 1412 Back Half Low Sideboard | JM0020606 |
| 6 | 1412 Back Endboard | JM0020605 |
| 7 | 1412 High Sideboard Corner | JM0009700 |
| 8 | 1412 Back Half High Sideboard | JM0017484 |
| 9 | 1412 High Sideboard Splice | JM0009702 |
| 10 | 1412 High Sideboard Brace | JM0021202 |
| 11 | 1412 Sideboard Brace | JM0020624 |
| 12 | 1412 Font Half High Sideboard | JM0020342 |
| 13 | 1412 Front Endboard | JM0027697 |
| 14 | 1412 Sideboard Set Complete | JM0041391 |



1412 Sideboards

Sideboards for 1122 Leaner



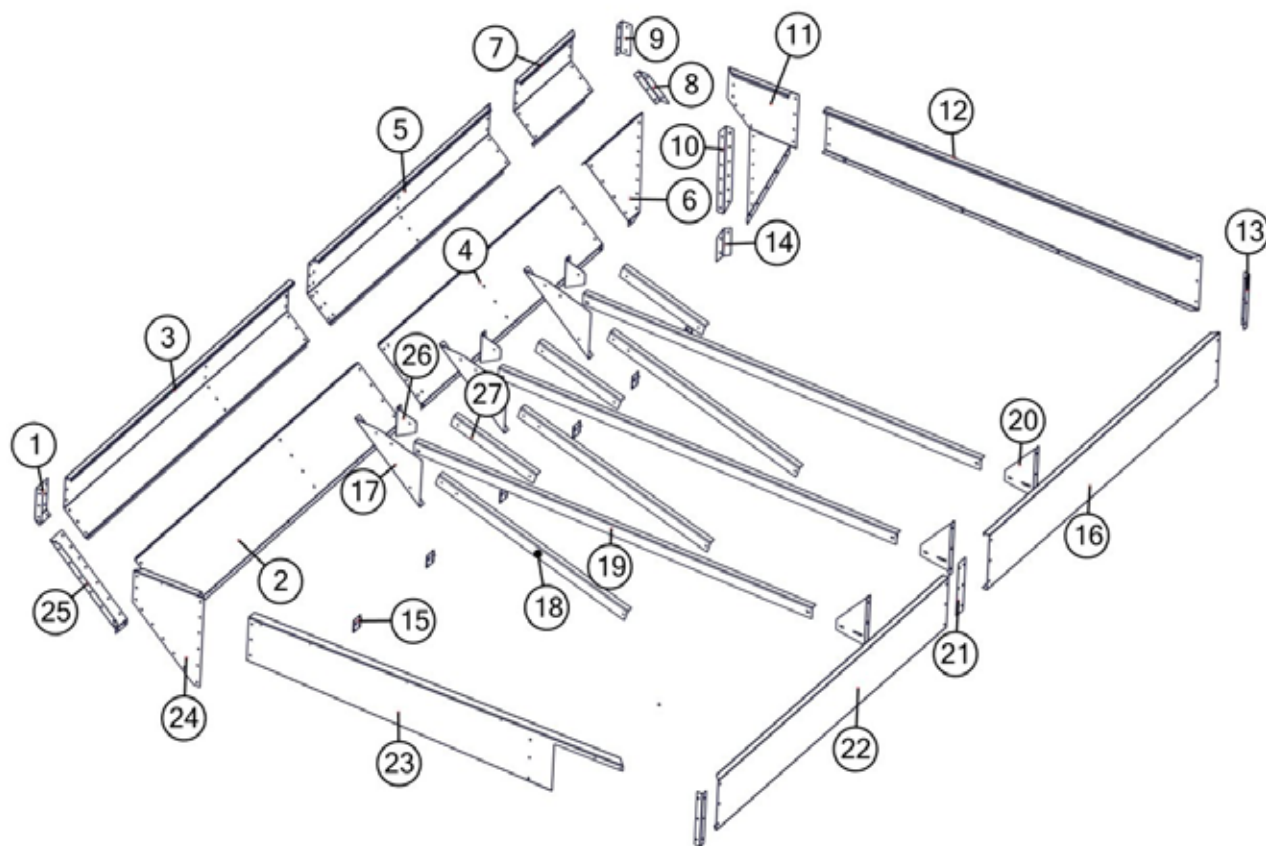
| # | Description | Part. No |
|----|-------------------------------------|-----------|
| 1 | 1122 Front Top Corner | JM0007363 |
| 2 | 1122 12222Front Bottom Sideboard | JM0007303 |
| 3 | 1122 Front Top Sideboard | JM0007304 |
| 4 | 1122 1222 Back Bottom Sideboard | JM0007307 |
| 5 | 1122 Back Top Sideboard | JM0007326 |
| 6 | 1122 1222 Back Side Bottom Triangle | JM0007305 |
| 7 | 1122 Back Corner Top Side Triangle | JM0007334 |
| 8 | 1122 1222 Back Tapered Corner | JM0007370 |
| 9 | 1122 Back Top Corner | JM0007367 |
| 10 | 1122 1222 Back Slope Corner | JM0007368 |
| 11 | 1122 Back Endboard Tr | JM0007362 |
| 12 | 1122 Back Endboard | JM0007341 |
| 13 | 1122 1222 Sideboard Corner | JM0010989 |

| # | Description | Part. No |
|----|--------------------------------------|-----------|
| 14 | 1122 1222 Back Corner Inside Sheddar | JM0007371 |
| 15 | 48in Piano Hinge | JM0025638 |
| 16 | 1122 1222 Back Half High Sideboard | JM0011031 |
| 17 | 1122 1222 Sideboard Brace | JM0007396 |
| 18 | 1122 1222 1522 Inside Brace | JM0007266 |
| 19 | 1122 1222 1522 Center Cross Brace | JM0007265 |
| 20 | 1122 1222 High Sideboard Brace | JM0010920 |
| 21 | 1122 1222 High Sideboard Splice | JM0010965 |
| 22 | 1122 1222 Front Half High Sideboard | JM0024289 |
| 23 | 1122 Front Endboard Slip Cover | JM0007337 |
| 24 | 1122 Front Endboard Triangle | JM0007338 |
| 25 | 1122 Front Triangle Slope Corner | JM0007366 |

*-R = Red
 *-B = Blue
 *-G = Green
 *-Y = Yellow

When requesting an item with color, end the part number with -R, -B, -G, or -Y. (e.g. JM0000000-R)

Sideboards for 1222 Leaner

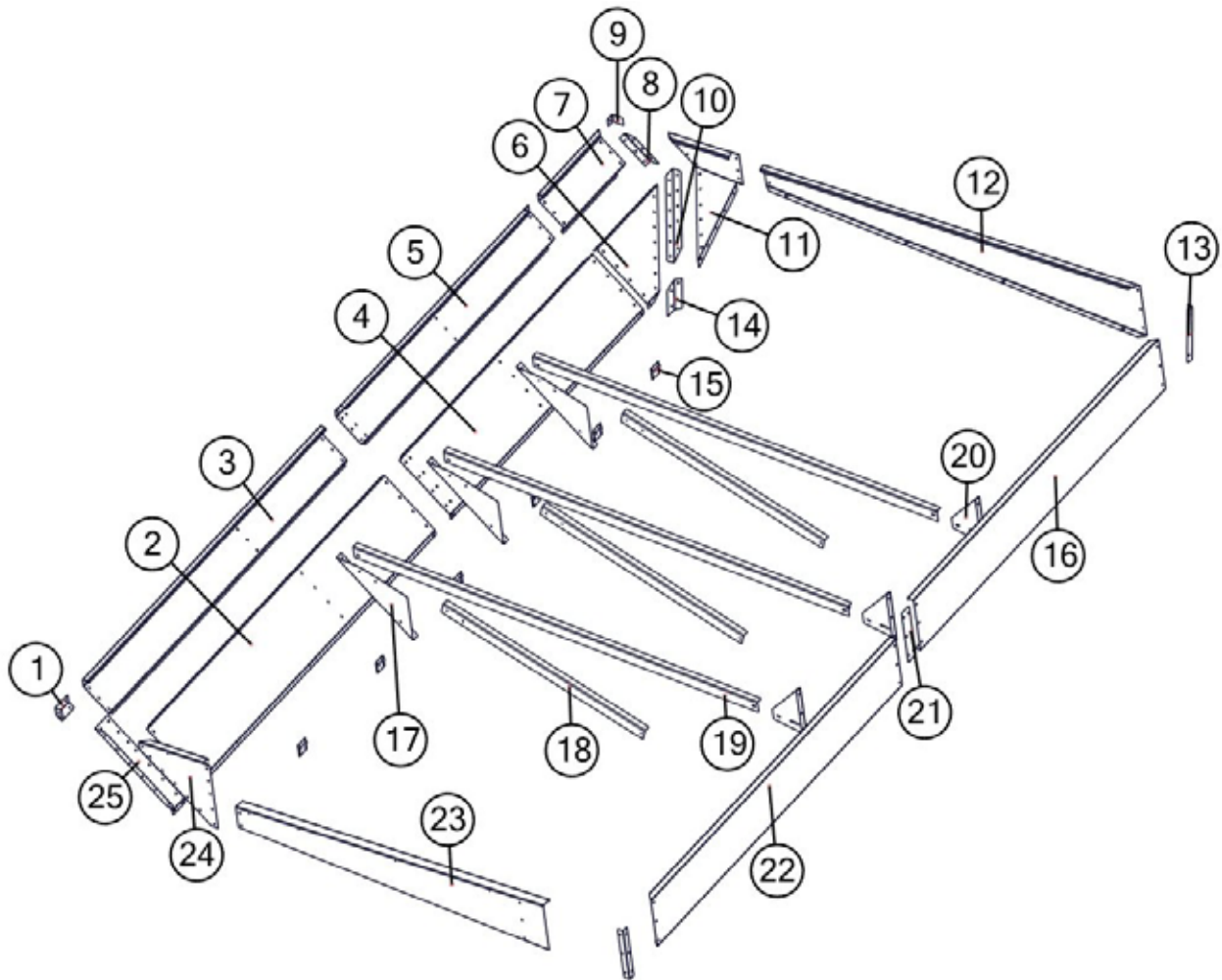


| # | Description | Part. No |
|----|--------------------------------------|-----------|
| 1 | 1222 Front Top Corner | JM0007414 |
| 2 | 1122 1222 Front Bottom Sideboard | JM0007303 |
| 3 | 1222 Front Top Sideboard | JM0007400 |
| 4 | 1122 1222 Back Bottom Sideboard | JM0007307 |
| 5 | 1222 Back Top Sideboard | JM0007401 |
| 6 | 1122 1222 Back Side Bottom Triangle | JM0007305 |
| 7 | 1222 Back Corner Top Side Triangle | JM0007402 |
| 8 | 1122 1222 Back Tapered Corner | JM0007370 |
| 9 | 1222 Leaner Back Top Corner | JM0025307 |
| 10 | 1122 1222 Back Slope Corner | JM0007368 |
| 11 | 1222 Back Endboard Triangle | JM0007412 |
| 12 | 1222 Back Endboard | JM0007410 |
| 13 | 1122 1222 Sideboard Corner | JM0010989 |
| 14 | 1122 1222 Back Corner Inside Sheddar | JM0007371 |

| # | Description | Part. No |
|----|-------------------------------------|-----------|
| 15 | 48in Piano Hinge | JM0025638 |
| 16 | 1122 1222 Back Half High Sideboard | JM0011031 |
| 17 | 1122 1222 Sideboard Brace | JM0007396 |
| 18 | 1122 1222 1522 Inside Brace | JM0007266 |
| 19 | 1122 1222 1522 Center Cross Brace | JM0007265 |
| 20 | 1122 1222 High Sideboard Brace | JM0010920 |
| 21 | 1122 1222 High Sideboard Splice | JM0010965 |
| 22 | 1122 1222 Front Half High Sideboard | JM0024289 |
| 23 | 1222 Front Endboard | JM0007404 |
| 24 | 1222 Front Endboard Triangle | JM0007405 |
| 25 | 1222 Front Triangle Slope Corner | JM0007366 |
| 26 | 1222 High Sideboard Brace | JM0007420 |
| 27 | 1222 High to Low Crossbrace | JM0007419 |

*-R = Red
 *-B = Blue
 *-G = Green
 *-Y = Yellow

When requesting an item with color, end the part number with -R, -B, -G, or -Y. (e.g. JM0000000-R)



*-R = Red
 *-B = Blue
 *-G = Green
 *-Y = Yellow

When requesting an item with color, end the part number with -R, -B, -G, or -Y. (e.g. JM0000000-R)

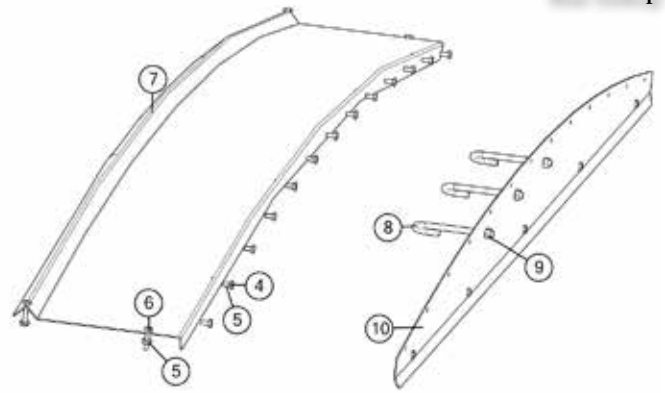
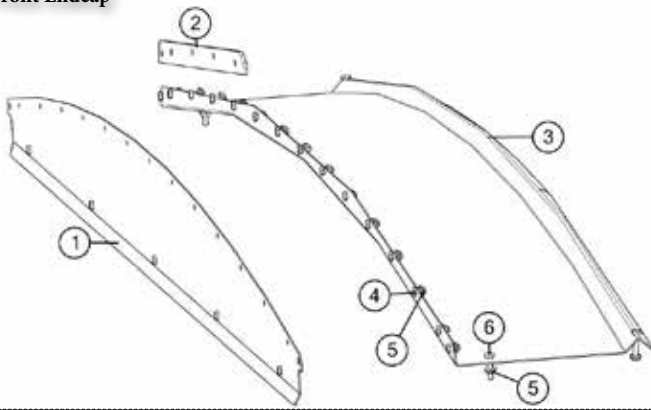
Sideboards for 1522 Leaner

| # | Description | Part. No |
|----|---------------------------------------|-----------|
| 1 | 1522 Front Top Corner | JM0007249 |
| 2 | 1522 Front Bottom Sideboard | JM0007235 |
| 3 | 1522 Front Top Sideboard | JM0007238 |
| 4 | 1522 Back Bottom Sideboard | JM0007239 |
| 5 | 1522 Back Top Sideboard | JM0007240 |
| 6 | 1522 Back Side Bottom Triangle | JM0007233 |
| 7 | 1522 Back Corner Top Side Triangle | JM0007241 |
| 8 | 1522 Back Tapered Corner | JM0007253 |
| 9 | 1522 Back Top Corner | JM0007252 |
| 10 | 1522 Back Slope Corner | JM0007251 |
| 11 | 1522 Back Endboard Triangle | JM0007248 |
| 12 | 1522 Back Endboard | JM0007244 |
| 13 | 1522 High Sideboard Corner | JM0009700 |
| 14 | 1522 Back Corner Inside Shedder | JM0007254 |
| 15 | 48in Piano Hinge | JM0025638 |
| 16 | 1522 Back Half High Sideboard | JM0017484 |
| 17 | 1522 Sideboard Brace | JM0007268 |
| 18 | 1122 1222 1522 Inside Brace | JM0007266 |
| 19 | 1122 1222 1522 Center Cross Brace | JM0007265 |
| 20 | 1522 High Sideboard Brace (High Side) | JM0007267 |
| 21 | 1522 High Sideboard Splice | JM0009702 |
| 22 | 1522 Front Half High Sideboard | JM0020342 |
| 23 | 1522 Front Endboard | JM0027746 |
| 24 | 1522 Front Endboard Triangle | JM0007243 |
| 25 | 1522 Front Triangle Slope Corner | JM0007250 |

Roll Tarp Assembly

Front Endcap

Rear Endcap

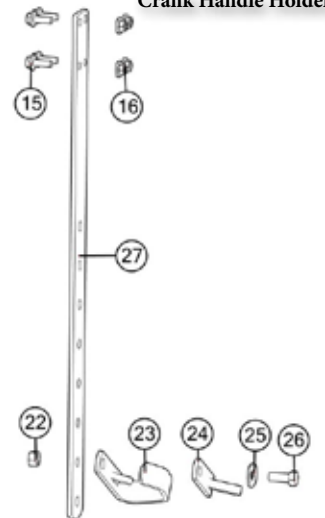
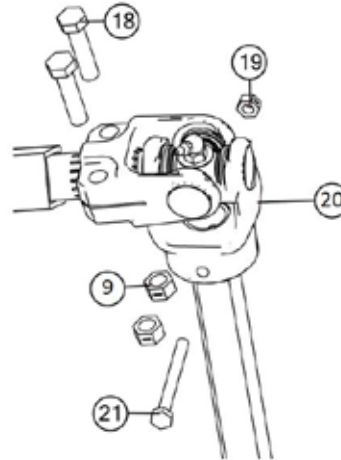
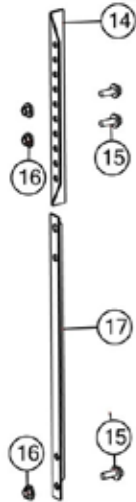
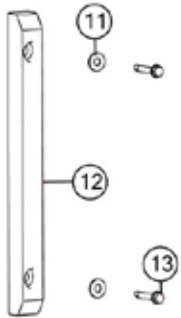


Tarp Stand-Off

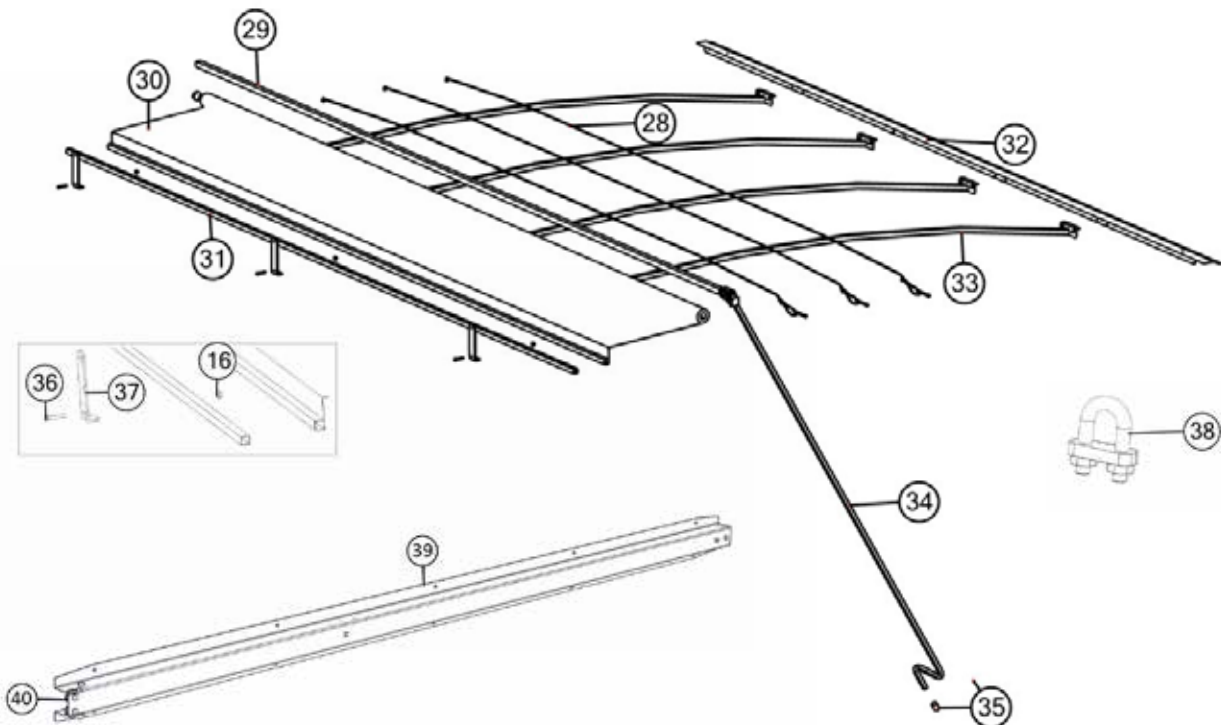
Prop-Up Bars

Crank Handle U-Joint

Crank Handle Holder



Tarp Assembly



Roll Tarp Assembly

| # | Description | Part. No. |
|----|--|-----------|
| 1 | Front End Cap Plate (812, 1012, 1112, 1312, 1412) | JM0000194 |
| 1 | Front Long End Cap Plate (1122, 1222, 1522) | JM0007263 |
| 1 | Front Short End Cap Plate (1122, 1222, 1522) | JM0007261 |
| 2 | Tarp Nylon Riser | JM0000196 |
| 3 | Front Arched End Cap (812, 1012, 1112, 1312, 1412) | JM0000195 |
| 3 | Front Long Arched End Cap (1122, 1222, 1522) | JM0007259 |
| 3 | Front Short Arched End Cap (1122, 1222, 1522) | JM0007256 |
| 4 | 1/4"-20 x 1/2" Gr5 Z Hex Bolt | JM0001481 |
| 5 | 1/4"-20 Gr5 Z SF Hex Nut | JM0001630 |
| 6 | 1/4"-20 x 1-1/4" Gr5 Z Hex Bolt | JM0016673 |
| 7 | Rear Arched End Cap (812, 1012, 1112, 1312, 1412) | JM0000172 |
| 7 | Rear Long Arched End Cap (1122, 1222, 1522) | JM0007257 |
| 7 | Rear Short Arched End Cap (1122, 1222, 1522) | JM0007255 |
| 8 | 3/8"-16 Gr5 Z J-Bolt (384JB) | JM0001519 |
| 9 | 3/8"-16 Gr5 Z Centerlock Hex Nut (38G5LN) | JM0001512 |
| 10 | Rear End Cap Plate (812, 1012, 1112, 1312, 1412) | JM0000169 |
| 10 | Rear Long End Cap Plate (1122, 1222, 1522) | JM0007262 |
| 10 | Rear Short End Cap Plate (1122, 1222, 1522) | JM0007260 |
| 11 | 1/4" Flat Washer (14-W) | JM0003090 |
| 12 | Tarp Standoff (TSST375) | JM0001889 |
| 13 | 1/4" x 1-1/2" Self Tapping Screw (STS-1L) | JM0001571 |
| 14 | Upper Adjustable Bow Support 13" | JM0021404 |
| 15 | 3/8"-16 x 1" Gr5 Z SF Hex Bolt (381-FB) | JM0002092 |
| 16 | 3/8"-16 Gr5 Z SF Hex Nut (38-FN) | JM0002152 |
| 17 | Lower Adjustable Bow Support 19" (ABS-2) | JM0000179 |
| 18 | 3/8"-16 x 1-1/2" Gr5 Z Hex Bolt (160022) | JM0001659 |
| 19 | 1/4"-20 Gr5 Z Centerlock Hex Nut (HLN-114) | JM0001505 |
| 20 | U-Joint (SUJ-1) | JM0001517 |
| 21 | 1/4"-20 x 2-1/2" Gr5 Z Hex Bolt (14212-HB) | JM0001506 |
| 22 | 1/2"-13 Gr5 Z Centerlock Hex Nut (12-13LN) | JM0001511 |
| 23 | Roll Tarp - Handle Hanger PP (CH-1) | JM0002967 |
| 24 | Roll Tarp - Handle Hanger Rubber Flap | JM0002551 |

| # | Description | Part. No. |
|----|--|-----------|
| 25 | 1/2" USS Flat Washer (12FW) | JM0003082 |
| 26 | 1/2"-13 x 1-1/4" Gr5 Z Hex Bolt (12114 HB-5) | JM0001513 |
| 27 | Crank Holder (ABCH-1EL) | JM0000164 |
| 28 | 3/16" Cable (812) | JM0022194 |
| 28 | 3/16" Cable (1012, 1122) | JM0021408 |
| 28 | 3/16" Cable (1312, 1412, 1522) | JM0015701 |
| 29 | 1 1/4" Square Roll Tube (812) | JM0022191 |
| 29 | 1 1/4" Square Roll Tube (1012, 1112, 1122, 1222) | JM0021334 |
| 29 | 1 1/4" Square Roll Tube (1312, 1412,1522) | JM0018968 |
| 30 | Tarp with Rivets (812) | JM0018184 |
| 30 | Tarp with Rivets (1012, 1112) | JM0021336 |
| 30 | Tarp with Rivets (1312, 1412) | JM0018966 |
| 30 | Tarp with Rivets (1122,1222) | JM0021378 |
| 30 | Tarp with Rivets (1522) | JM0021379 |
| 31 | 1" Square Tie-Down Tube (812) | JM0000188 |
| 31 | 1" Square Tie-Down Tube (1012, 1112, 1122,1222) | JM0021331 |
| 31 | 1" Square Tie-Down Tube (1312, 1412,1522) | JM0018962 |
| 32 | Tightening Lip x 192" (812) | JM0000155 |
| 32 | Tightening Lip (1012, 1112) Front | JM0013654 |
| 32 | Tightening Lip (1012, 1112) Rear | JM0013653 |
| 32 | Tightening Lip (1312, 1522) Front | JM0017842 |
| 32 | Tightening Lip (1312, 1522) Rear | JM0017843 |
| 32 | Tightening Lip (1122, 1222) Front | JM0021397 |
| 32 | Tightening Lip (1122, 1222) Rear | JM0021396 |
| 33 | Arched Tarp Bows (812-1412) | JM0000157 |
| 33 | Arched Tarp Bows (1122,1222,1522) | JM0021405 |
| 34 | Crank with Splined U-Joint (812) | JM0000185 |
| 34 | Crank with Splined U-Joint (1012 - 1522) | JM0019888 |
| 35 | Yellow Cap (112950) | JM0018963 |
| 36 | 3/8"-16 x 2" Gr5 Z Hex Bolt (382-HB) | JM0001510 |
| 37 | Tarp Stop Bracket (TSB-1) | JM0000187 |
| 38 | Cable Clamp-Small | JM0001514 |
| 39 | Spring Return Assembly | JM0012965 |
| 40 | Spring Return Cable | JM0012981 |