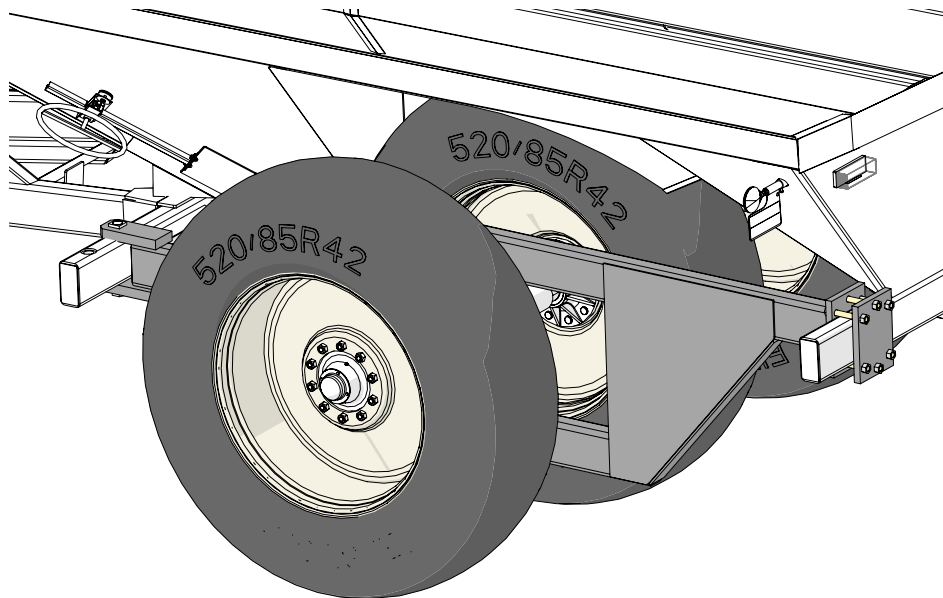




Manual

CHANGING THE INSIDE WALKER TIRE GRAIN CARTS



Rev. 2.22.2021

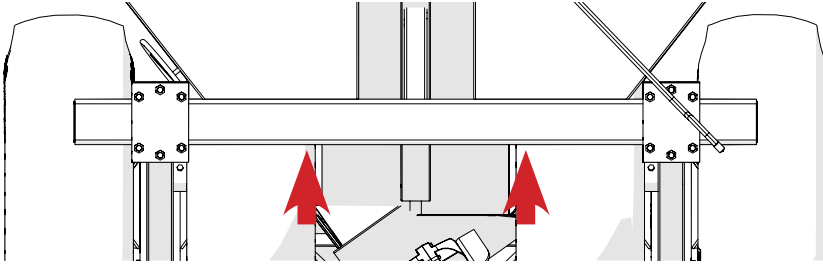
J&M Manufacturing Co, Inc

284 Railroad Street - P.O. Box 547 | Fort Recovery, OH 45846 | Ph: (419) 375-2376 | Fax: (419) 375-2708

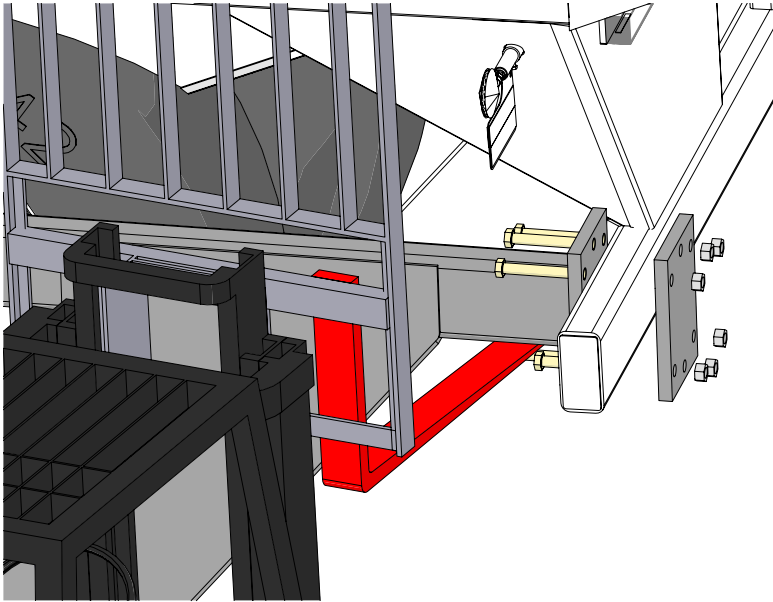
www.jm-inc.com

Required Parts

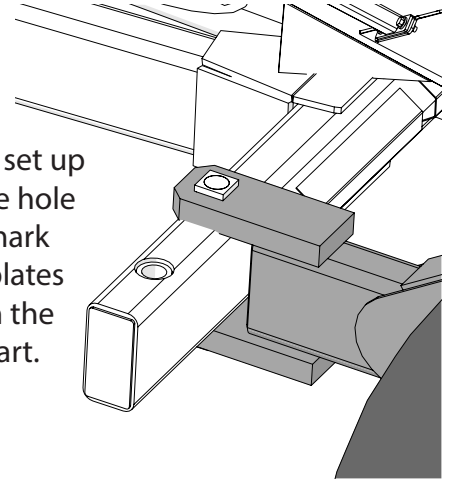
Lift and prop the back end of the grain cart.



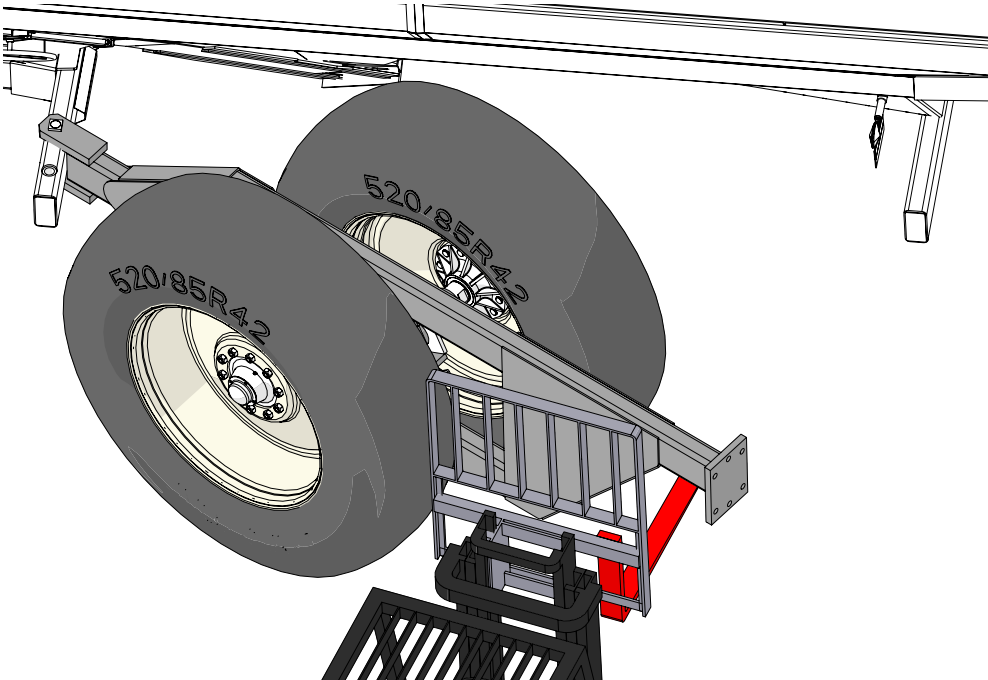
Use a forklift to support the walker frame weldment.
Once supported loosen the nuts and bolts shown in the image.



If your cart is set up
in the outside hole
you should mark
where your plates
will line up in the
back of the cart.

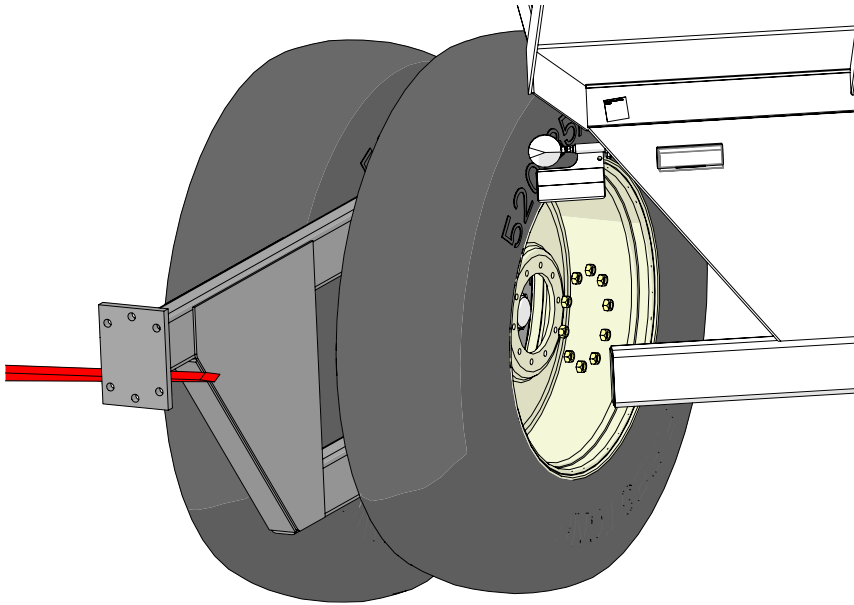


Swing the walker frame weldment out.

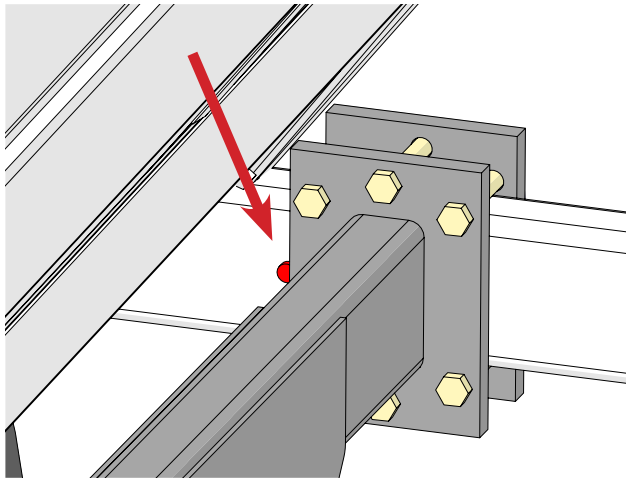


Step 1 – Disconnect and Remove Scale Bar

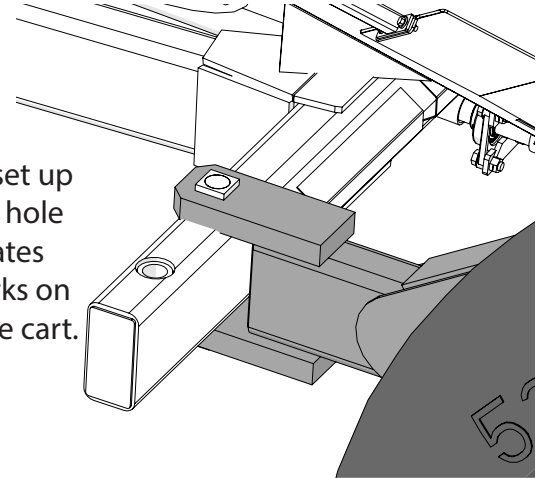
On the inside tire loosen all lugnuts and remove tire.
Replace with the fixed or new tire.



Swing the walker frame weldment back into place. It will have a stop welded inside shown in red in the image.



If your cart is set up
in the outside hole
line up the plates
with your marks on
the back of the cart.



Tighten the bolts.

