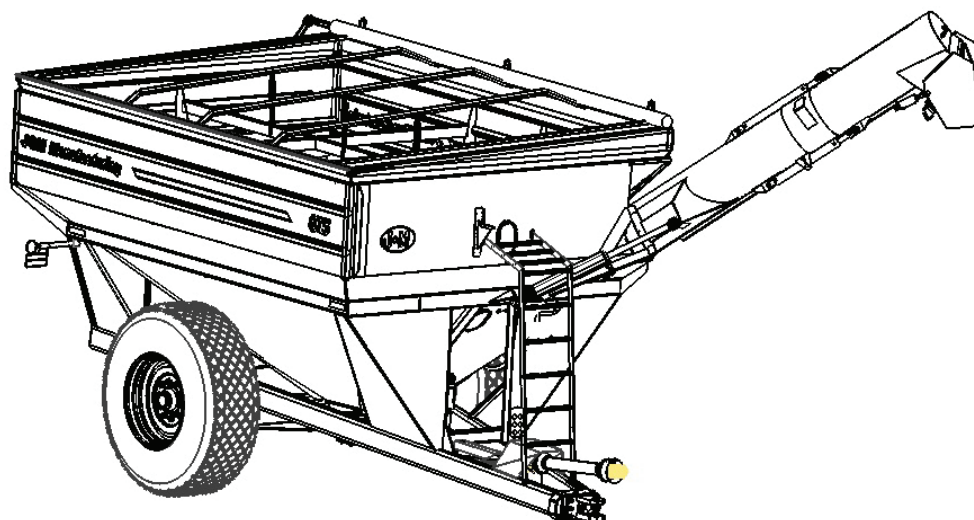
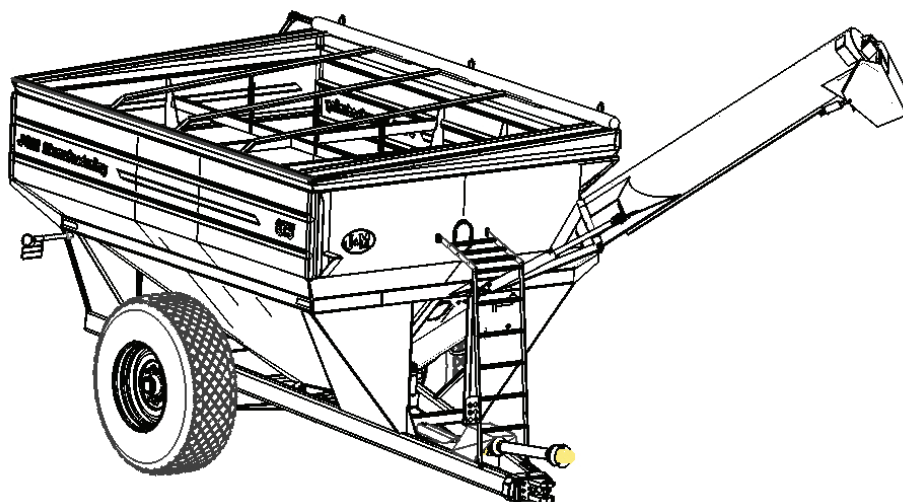




## GRAIN CART SLIDER CONVERSION MANUAL

# PATENTED SINGLE AUGER GRAIN CARTS



J. & M. Mfg. Co., Inc.  
P.O. Box 547 Ft. Recovery, OH 45846  
Ph: (419) 375-2376 Fax: (419) 375-2708  
[www.jm-inc.com](http://www.jm-inc.com)

# GRAIN CART SLIDER CONVERSION MANUAL

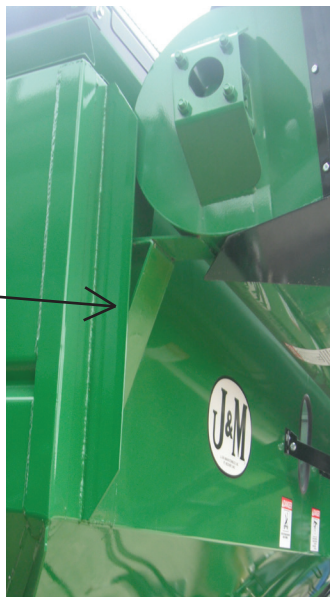
## STEP - S1.0



Remove the flow control cylinder, flow control spout cylinder hardware, flood light, the floodlight hardware, and the main fold cylinder from the regular top tube assembly. Once this is completed (essentially only left with the top tube weldment), attach an overhead hoist and chain at each end of the top tube weldment. Remove the 1 3/4" pivot pin by removing the two 1/2" x 1 1/2" bolts. Lift the top tube assembly out of the hinge with the overhead hoist.

## STEP - S2.0

Old Auger Rest

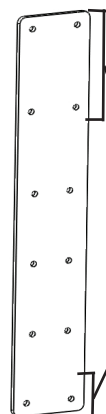


Depending on the year and model, the old auger rest may need removed. Remove the old auger rest on the Grain Cart by whichever method is preferred/available (torch, cutting grinder, etc). If not removed, this could be a collision hazard with the newly installed slider top tube assembly. If the auger rest is already 52" from the Opposite Auger Side (shown in STEP - S3.0) then the auger rest will most likely not need to be removed. This step can be done later if it is found that it does need removed. SKIP steps S3.0 and S4.0 if the old auger rest doesn't need replaced.

# GRAIN CART SLIDER CONVERSION MANUAL

## STEP - S3.0

Inside Slide Plate



Wider Holes

Front of Grain Cart

50"

Opposite Auger Side of Grain Cart

Auger Side of Grain Cart

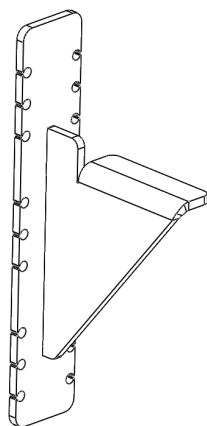
Rear of Grain Cart

Install the Inside Slide Plate on the inside of the Grain Cart's front wall.

Place the inside slide plate approximately 50" from the Opposite Auger Side wall. There are six holes predrilled on the slide plate that are spaced wider than the other six holes. The end of the inside slide plate that has four of the six holes that are spaced wider goes to the top of the grain cart. With the inside slide plate in position, drill 3/8" through holes through the top four and bottom two holes of the inside slide plate through the front Grain Cart wall. Then use six 3/8"-16 x 1 1/2" hex head bolts, 3/8" serrated flange nuts to install the plate. An option is to weld this slide plate into place with the same positioning. NOTE: Some inside slide plates will need to be cut shorter to fit, depending on grain cart model.

## STEP - S4.0

Auger Rest Triangle



Rear of Grain Cart

Auger Side of Grain Cart

Opposite Auger Side of Grain Cart

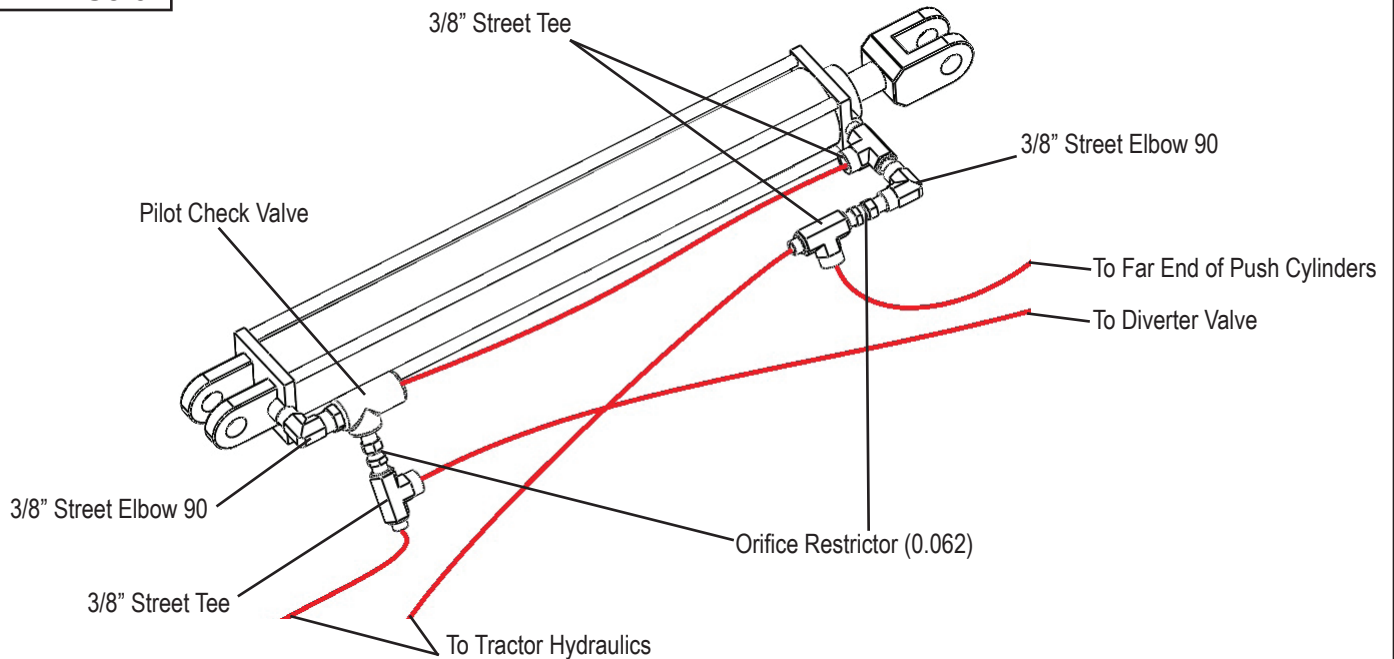
Front of Grain Cart

Mount the Auger Rest Triangle.

Drill 3/8" through holes through the remaining six holes on the Inside Slide Plate (the six holes that are placed closer together). Mount the auger rest triangle weldment to the inside slide plate from the outside as shown in the image above. Use the center hole adjustment or the center of the slot for now. Use 3/8"-16 x 1 1/2" hex head bolts and 3/8" serrated flange nuts to install. Adjustments will need to be made after the top auger is installed for proper "landing" of the top auger. An option is to weld this part in place once the position is set if desired.

# GRAIN CART SLIDER CONVERSION MANUAL

## STEP - S5.0



For 18" and 22" augers: Using the original main fold cylinder, re-plumb the fittings and hoses as shown above.

For 20" augers: Install the 3" x 24" hydraulic fold cylinder. (The hoses and fittings should be as above.)

## STEP - S6.0



Use an overhead hoist and chain to install the top tube slider assembly, (NOTE: Picture is of a regular top tube and not top tube slider assembly). Re-use the 1 3/4" pivot pin and 1/2" x 1 1/2" bolts to install the top tube slider assembly.

# GRAIN CART SLIDER CONVERSION MANUAL

## STEP - S7.0

Diverter Valve

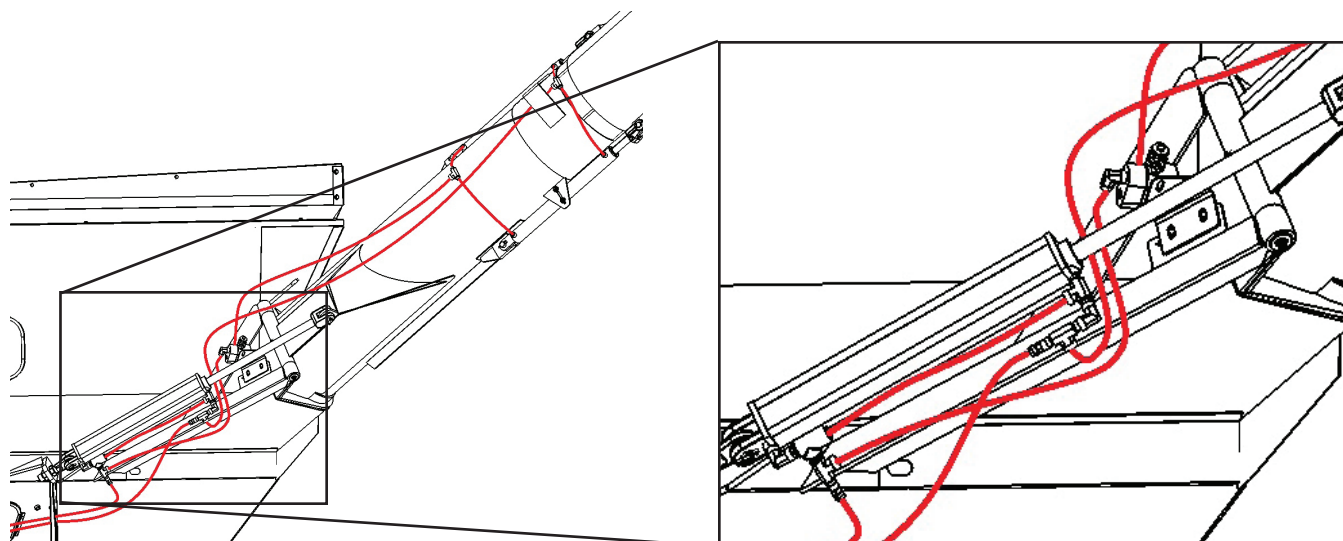


Install diverter valve.

Bolt the diverter valve in place. The valve will need to be positioned so that when the auger “lands” on the auger rest, the valve should engage and the slider tube should begin to retract in to its short-est position.

NOTE: Older versions will need the mounting bracket either welded or bolted in place.

## STEP - S8.0



Install the newly plumbed main fold cylinder and fitting assemblies with the tail end of the cylinder connected to the Grain Cart tank and the rod end connected to the top tube. Finish plumbing the rest according to the diagram above.

## GRAIN CART SLIDER CONVERSION MANUAL

### STEP - S9.0

Fold the top tube into the unload position. Work on the hinge plates so they meet up flush with one another. Once the hinge plates are flush with one another, finish welding the hinge plate on the top tube with a solid weld.

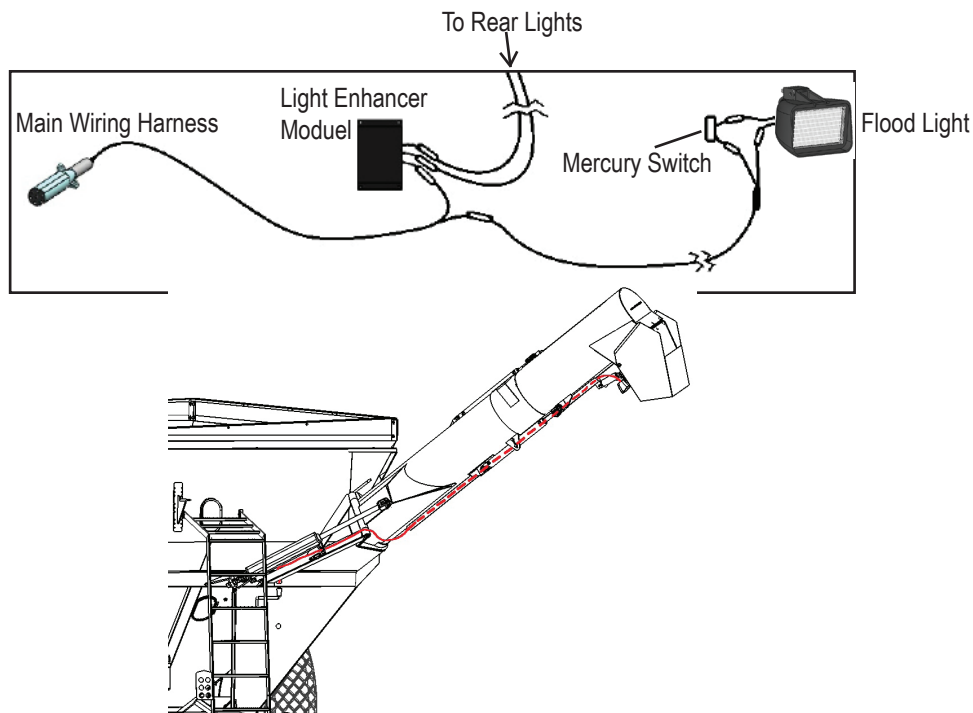
### STEP - S10.0

Begin to fold the top tube into the down position. Weld the "90 Degree Auger Rest" in place so it will land square on the "Auger Rest Triangle".

Adjust the Auger Rest Triangle so that the top tube slider assembly "rests" in a position where it will not interfere with the front of the grain cart (or possible tarp kit parts). Once the Auger Rest Triangle is in its desired spot, tighten the bolts down or weld the Auger Rest Triangles into place.

# GRAIN CART SLIDER CONVERSION MANUAL

## STEP - S11.0



Re-connect the flood light wiring and the flow control spout cylinder. Be sure to run the wire through the conduit on the slider tube and the base top tube and to run it through the D-ring on the hinge plate.  
NOTE: The hoses for the flow control spout cylinder may need to be 2' longer than originally installed for the slider option.

## STEP - S11.1



Picture of the flood light hardware and tip spout cylinder hardware properly installed.