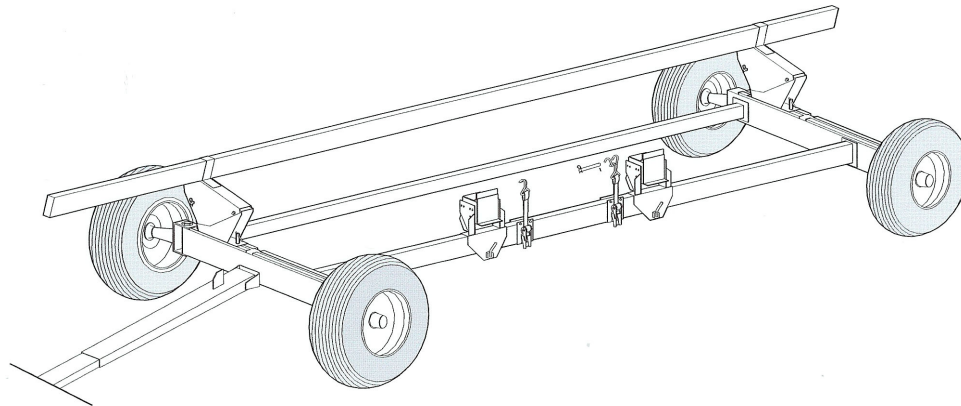


OPERATOR'S MANUAL

and Set-Up Instructions for HEADER TRANSPORTS



HT-874

HT-874L

HT-874XL

HT-874XL-36



J. & M. Mfg. Co., Inc.

P.O. Box 547 Ft. Recovery, OH 45846

Ph: (419) 375-2376 Fax: (419) 375-2708

www.jm-inc.com

TO THE DEALER:

Read manual instructions and safety rules. Make sure all items on the Dealer's Pre-Delivery and Delivery Check Lists in the Operator's Manual are completed before releasing equipment to the owner.

The dealer must complete the Warranty Registration Card attached to the front inside cover of this manual and return to J. & M. Mfg. Co., Inc. at the address indicated on the card. **Warranty claims will be denied if the Warranty Registration Card has not been completed and returned.**

EXPRESS WARRANTY:

J. & M. Mfg. Co. Inc. warrants against defects in construction or materials for a period of ONE year. We reserve the right to inspect and decide whether material or construction was faulty or whether abuse or accident voids our guarantee.

Warranty service must be performed by a dealer or service center authorized by J. & M. Mfg. Co. Inc. to sell and/or service the type of product involved, which will use only new or remanufactured parts or components furnished by J. & M. Mfg. Co. Inc. Warranty service will be performed without charge to the purchaser for parts or labor based on the Warranty Labor Times schedule. Under no circumstance will allowable labor times extend beyond the maximum hours indicated in the Warranty Labor Times schedule for each warranty procedure. The purchaser will be responsible, however, for any service call and/or transportation of the product to and from the dealer or service center's place of business, for any premium charged for overtime labor requested by the purchaser, and for any service and/or maintenance not directly related to any defect covered under the warranty. Costs associated with equipment rental, product down time, or product disposal are not warrantable and will not be accepted under any circumstance.

Each warranty term begins on the date of product delivery to the purchaser. Under no circumstance will warranty be approved unless (i) the product warranty registration card (attached to the inside of the Operator's Manual) has been properly completed and submitted to the equipment manufacturer, and (ii) a warranty authorization number has been issued by the equipment manufacturer. This Warranty is effective only if the warranty registration card is returned within 30 days of purchase.

This warranty does not cover a component which fails, malfunctions or is damaged as a result of (i) improper modification or repair, (ii) accident, abuse or improper use, (iii) improper or insufficient maintenance, or (iv) normal wear or tear. This warranty does not cover products that are previously owned and extends solely to the original purchaser of the product. Should the original purchaser sell or otherwise transfer this product to a third party, this Warranty does not transfer to the third party purchaser in any way. J. & M. Mfg. Co. Inc. makes no warranty, express or implied, with respect to tires or other parts or accessories not manufactured by J. & M. Mfg. Co. Inc. Warranties for these items, if any, are provided separately by their respective manufacturers.

THIS WARRANTY IS EXPRESSLY IN LIEU OF ALL OTHER WARRANTIES OR CONDITIONS, EXPRESS, IMPLIED OR STATUTORY, INCLUDING ANY IMPLIED WARRANTY OF MERCHANTABILITY OR FITNESS FOR PARTICULAR PURPOSE.

In no event shall J. & M. Mfg. Co. Inc. be liable for special, direct, incidental or consequential damages of any kind. The exclusive remedy under this Warranty shall be repair or replacement of the defective component at J. & M. Mfg. Co. Inc.'s option. This is the entire agreement between J. & M. Mfg. Co. Inc. and the Owner about warranty and no J. & M. Mfg. Co. Inc. employee or dealer is authorized to make any additional warranty on behalf of J. & M. Mfg. Co. Inc.

The manufacturer reserves the right to make product design and material changes at any time without notice. They shall not incur any obligation or liability to incorporate such changes and improvements in products previously sold to any customer, nor shall they be obligated or liable for the replacement of previously sold products with products or parts incorporating such changes.

SERVICE:

The equipment you have purchased has been carefully manufactured to provide dependable and satisfactory use. Like all mechanical products, it will require cleaning and upkeep. Lubricate the unit as specified. Observe all safety information in this manual and safety signs on the equipment.

For service, your authorized J. & M. dealer has trained mechanics, genuine J. & M. service parts, and the necessary tools and equipment to handle all your needs.

Use only genuine J. & M. service parts. Substitute parts may void the warranty and may not meet standards required for safe and satisfactory operation. Record the model number and serial number of your equipment in the spaces provided:

Serial No.: _____ Date of Purchase: _____

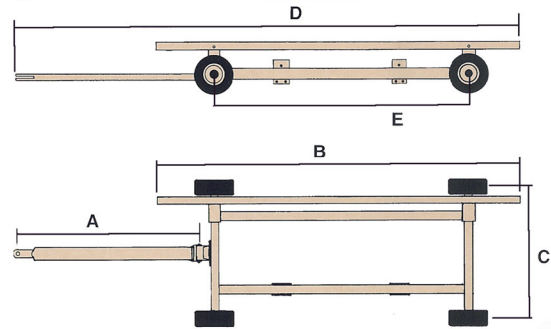
Purchased From: _____

Provide this information to your dealer to obtain correct repair parts.

HEADER TRANSPORTS SPECIFICATIONS

DIMENSIONS

| | HT-874 | HT-874L | HT-874XL | HT-874XL-36 |
|---|--------|---------|----------|-------------|
| A | 12' | 15' | 15' | 15' |
| B | 25' | 30' | 30' | 36' |
| C | 74" | 74" | 74" | 74" |
| D | 31' 6" | 37' | 37' 9" | 40'-9" |
| E | 13' | 15' | 16' 6" | 16'-6" |



SPECIFICATIONS

| | |
|--------------------------|--|
| Weight | 1,320 lbs (HT-874) 1,485 lbs (HT-874L) 1,520 lbs (HT-874XL) 1,650 lbs (HT-874XL-36) |
| Wheels | 14 x 6 15 x 6 (HT-874XL-36) |
| Hub | 6 bolt |
| Spindles | Reinforced 1 3/4" dia. |
| Axle Construction | 6" Box Channel |
| Steel Upper Bar | 4" x 6" steel tubing |
| Spring Balanced Tongue | Standard |
| Adjustable Header Mounts | Standard |
| Tie Down Straps | Standard |

GENERAL INFORMATION

TO THE OWNER:

The purpose of this manual is to assist you in operating and maintaining your header transport in a safe manner. Read it carefully. It furnishes information and instructions that will help you achieve years of dependable performance and help maintain safe operating conditions. If this machine is used by an employee or is loaned or rented, make certain that the operator(s), prior to operating:

1. Is instructed in safe and proper use.
2. Reviews and understands the manual(s) pertaining to this machine.

Throughout this manual, the term **IMPORTANT** is used to indicate that failure to observe can cause damage to equipment. The terms **CAUTION**, **WARNING** and **DANGER** are used in conjunction with the Safety-Alert Symbol, (a triangle with an exclamation mark), to indicate the degree of hazard for items of personal safety. When you see this symbol, carefully read the message that follows and be alert to the possibility of personal injury or death.



This Safety-Alert symbol indicates a hazard and means **ATTENTION! BECOME ALERT! YOUR SAFETY IS INVOLVED!**



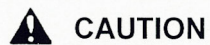
DANGER

Indicates an imminently hazardous situation that, if not avoided, will result in death or serious injury.



WARNING

Indicates a potentially hazardous situation that, if not avoided, could result in death or serious injury, and includes hazards that are exposed when guards are removed.



CAUTION

Indicates a potentially hazardous situation that, if not avoided, may result in minor or moderate injury.

IMPORTANT

Indicates that failure to observe can cause damage to equipment.

NOTE

Indicates helpful information.

GENERAL INFORMATION

BOLT TORQUE CHART

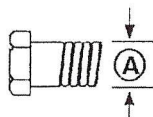
Always tighten hardware to these values unless a different torque or tightening procedure is listed for a specific application.

Fasteners must always be replaced with the same grade as specified in the manual parts list.

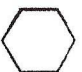
Always use the proper tool for tightening hardware: SAE for SAE hardware and Metric for metric hardware.


Make sure fastener threads are clean and you start thread engagement properly.


All torque values are given to specifications used on hardware defined by SAE J1701 & J1701M JUL 96.

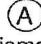


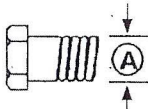
**SAE SERIES
TORQUE
CHART**


**SAE Grade 2
(No Dashes)**


**SAE Bolt Head
Identification**
**SAE Grade 5
(3 Radial Dashes)**


**SAE Grade 8
(6 Radial Dashes)**

|  Diameter (Inches) | Wrench Size | MARKING ON HEAD | | | | | |
|---|----------------|-----------------|-----|----------|-----|----------|------|
| | | SAE 2 | | SAE 5 | | SAE 8 | |
| | | Lbs.-Ft. | N-m | Lbs.-Ft. | N-m | Lbs.-Ft. | N-m |
| 1/4 | 7/16" | 6 | 8 | 10 | 13 | 14 | 18 |
| 5/16 | 1/2" | 12 | 17 | 19 | 26 | 27 | 37 |
| 3/8 | 9/16" | 23 | 31 | 35 | 47 | 49 | 67 |
| 7/16 | 5/8" | 36 | 48 | 55 | 75 | 78 | 106 |
| 1/2 | 3/4" | 55 | 75 | 85 | 115 | 120 | 163 |
| 9/16 | 13/16" | 78 | 106 | 121 | 164 | 171 | 232 |
| 5/8 | 15/16" | 110 | 149 | 170 | 230 | 240 | 325 |
| 3/4 | 1-1/8" | 192 | 261 | 297 | 403 | 420 | 569 |
| 7/8 | 1-5/16" | 306 | 416 | 474 | 642 | 669 | 907 |
| 1 | 1-1/2" | 467 | 634 | 722 | 979 | 1020 | 1383 |



METRIC SERIES
TORQUE
CHART

8.8

Metric Bolt Head
Identification

10.9

Metric
Grade 10.9

| Diameter & Thread Pitch (Millimeters) | Wrench Size | COARSE THREAD | | | | FINE THREAD | | | | Diameter & Thread Pitch (Millimeters) |
|---|----------------|-----------------|----------|-------------|----------|-----------------|----------|-------------|----------|---|
| | | MARKING ON HEAD | | | | MARKING ON HEAD | | | | |
| | | Metric 8.8 | | Metric 10.9 | | Metric 8.8 | | Metric 10.9 | | |
| | | N-m | Lbs.-Ft. | N-m | Lbs.-Ft. | N-m | Lbs.-Ft. | N-m | Lbs.-Ft. | |
| 6 x 1.0 | 10 mm | 8 | 6 | 11 | 8 | 8 | 6 | 11 | 8 | 6 x 1.0 |
| 8 x 1.25 | 13 mm | 20 | 15 | 27 | 20 | 21 | 16 | 29 | 22 | 8 x 1.0 |
| 10 x 1.5 | 16 mm | 39 | 29 | 54 | 40 | 41 | 30 | 57 | 42 | 10 x 1.25 |
| 12 x 1.75 | 18 mm | 68 | 50 | 94 | 70 | 75 | 55 | 103 | 76 | 12 x 1.25 |
| 14 x 2.0 | 21 mm | 109 | 80 | 151 | 111 | 118 | 87 | 163 | 120 | 14 x 1.5 |
| 16 x 2.0 | 24 mm | 169 | 125 | 234 | 173 | 181 | 133 | 250 | 184 | 16 x 1.5 |
| 18 x 2.5 | 27 mm | 234 | 172 | 323 | 239 | 263 | 194 | 363 | 268 | 18 x 1.5 |
| 20 x 2.5 | 30 mm | 330 | 244 | 457 | 337 | 367 | 270 | 507 | 374 | 20 x 1.5 |
| 22 x 2.5 | 34 mm | 451 | 332 | 623 | 460 | 495 | 365 | 684 | 505 | 22 x 1.5 |
| 24 x 3.0 | 36 mm | 571 | 421 | 790 | 583 | 623 | 459 | 861 | 635 | 24 x 2.0 |
| 30 x 3.0 | 46 mm | 1175 | 867 | 1626 | 1199 | 1258 | 928 | 1740 | 1283 | 30 x 2.0 |

TABLE OF CONTENTS

| | |
|---|-------|
| INTRODUCTION | 2 |
| EXPRESS WARRANTY | 2 |
| SPECIFICATIONS | 3 |
| GENERAL INFORMATION | 3 |
| BOLT TORQUE CHART | 4 |
| SAFETY RULES | 6 |
| SAFETY SIGNS | 7 |
| SET-UP INSTRUCTIONS | 8 |
| PARTS LIST | 9 |
| LIGHT KIT | 10-11 |
| ADJ. BRACKETS, TIE-DOWN BRACKETS, HEADER MOUNTS | 12 |
| INITIAL OPERATION, OPERATING INSTRUCTIONS/MAINTENANCE | 13 |
| SERVICE RECORDS | 14 |

SAFETY RULES



ATTENTION! BECOME ALERT! YOUR SAFETY IS INVOLVED!



Safety is a primary concern in the design and manufacture of our products. Unfortunately, our efforts to provide safe equipment can be erased by an operator's single careless act. In addition, hazard control and accident prevention are dependent upon the awareness, concern, judgement, and proper training of personnel involved in the operation, transport, maintenance and storage of equipment.

Make certain that the operator(s), prior to operating is instructed in safe and proper use and reviews and understands the manual(s) pertaining to this machine.

Read this manual before you operate this machine. If you do not understand any part of this manual, or need more information, contact the manufacturer or your authorized dealer.

SAFETY

Understand that your safety and the safety of other persons is measured by how you service, and operate this machine. Know the positions and functions of all controls before you try to operate them. Make sure to check all controls in a safe area before starting you work.

The safety information given in this manual does not replace safety codes, federal, state or local laws. Make certain your machine has the proper equipment as designated by local laws and regulations.

A frequent cause of personal injury or death is from persons falling off equipment and being run over. Do not permit persons to ride on this machine.

Travel speeds should be such that complete control and machine stability is maintained at all times. Where possible, avoid operating near ditches, embankments and holes. Reduce speed when turning, crossing slopes and rough, slick or muddy surfaces.

Collision of high speed road traffic and slow moving machines can cause personal injury or death. On roads, use flasher lights according to local laws. Keep slow-moving-vehicle emblem visible. Pull over to let faster traffic pass.

Make sure that the header is fastened securely to the transport before moving.

Make sure that everyone is clear of equipment before moving the machine. NEVER position yourself under or near header when mounting on header transport.

Never adjust, service, clean, or lubricate the header transport until all power is shut off.

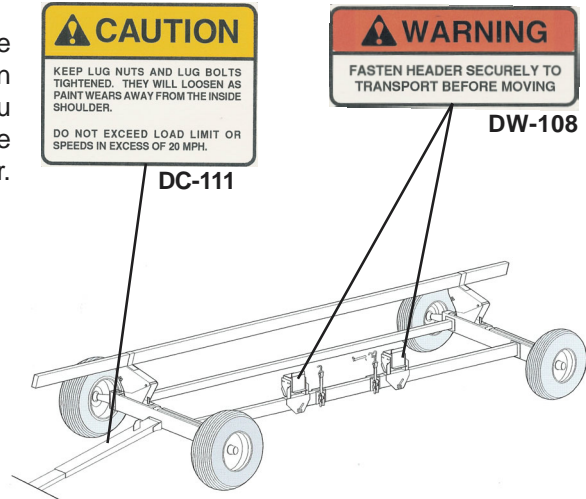
Make sure that the header transport is fastened securely to the tractor by using a high strength hitch pin, clip and safety chains.

Do NOT exceed load limit or speeds in excess of 20 MPH. Rims, hubs and bearings are designed for heavy loads at slow speeds. Also be sure slow moving vehicle emblem is attached to rear of the transport.

SAFETY SIGNS
ATTENTION! BECOME ALERT! YOUR SAFETY IS INVOLVED!
Replace Immediately If Damaged or Missing!

IMPORTANT: Install new safety signs if the old signs are destroyed, lost, painted over or cannot be read. When parts are replaced that have safety signs, make sure you install a new sign with each new part. New signs are available from the manufacturer or your authorized dealer.

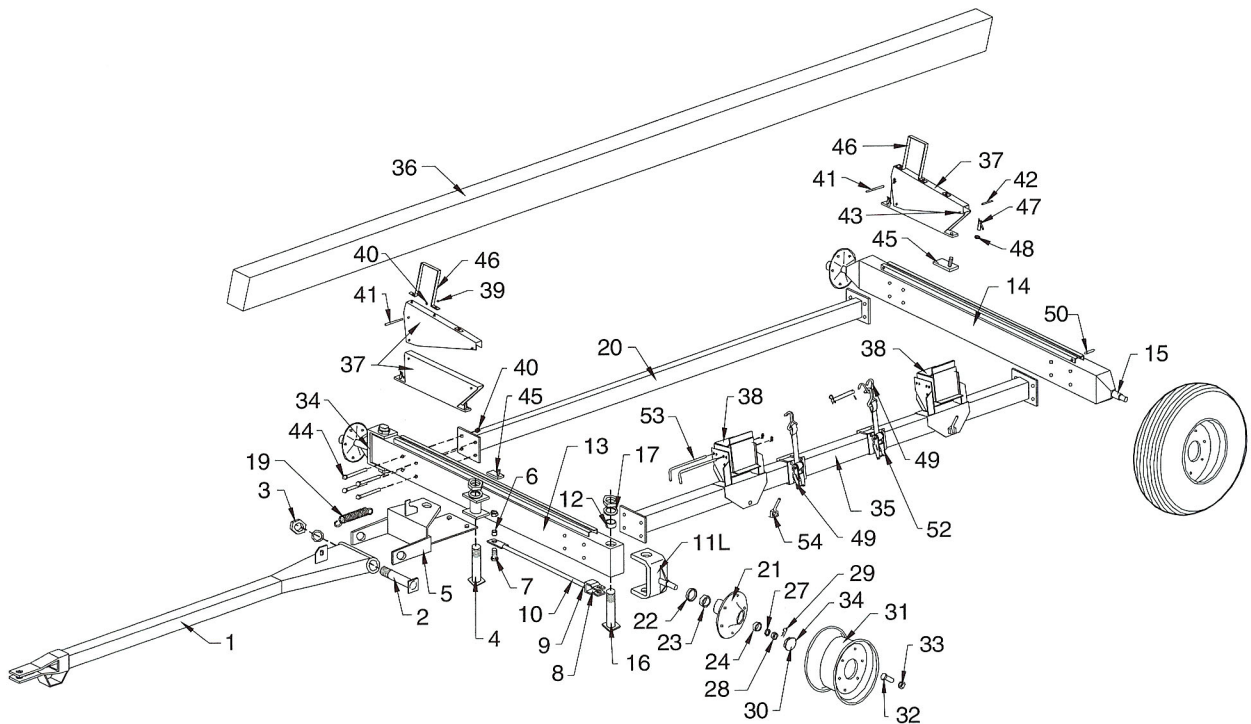
| Ref. # | Description | Part # | |
|--------|---------------|--------|---|
| Req'd | | | |
| 1 | Sign, Caution | DC-111 | 1 |
| 2 | Sign, Warning | DW-108 | 1 |



SET-UP INSTRUCTIONS

1. Have tires mounted to wheels according to tire manufacturer's recommendations.
2. Remove lug nuts on Back and Front Assemblies. Mount wheels to hubs and fasten lug nuts securely (80 torque). (Lug nuts should be checked after each load during initial operation of the header transport and then after every 10 hours of use.)
3. Attach the Large Lower Bar to the front and back assemblies using eight 1/2" x 4 1/2" bolts and eight 1/2" lock nuts. Attach Small Lower Bar using eight 1/2" x 4 1/2" bolts and eight 1/2" lock nuts.
4. Attach the Tongue Assembly to the front assembly using 1 1/4" x 11 3/4" Tongue Bolt and 1 1/4" hex nut. Attach one end of the Large Tongue Spring to the top bracket on the tongue assembly. Lift tongue and loop other end of spring over the mounting bracket on hitch assembly that is attached to the Front Assembly. If equipped with a Quick-Hitch Tongue Assembly, check to make sure that the safety catch (7/8" x 2 1/4" bolt with spacer) under the tongue assembly (slide of quick-hitch) is secure.
5. Remove one 3/8" x 3 1/2" bolt from end of slide channel on axle. Remove 1/2" Slide Bolt Weldments from Adjustable Bracket and insert into slide channel. Place adjustable bracket over slot on top of both Slide Bolt Weldments on the front axle assembly. Attach and secure the 1/2" Handle Nuts **with lock washers**. Place the other adjustable bracket over the slot on the top of the back axle assembly and attach in the same way. Equally space Upper Bar on adjustable bracket support and fasten using two Upper Bar Clamps, four 1/2" flat washers and four 1/2" lock nuts. Reattach 3/8" x 3 1/2" bolt to end of slide channel.
6. Attach the Header Mounts using the Fast Clamp Nut and Bolt. For different mounting positions, refer to the diagrams at the end of this section. **IMPORTANT: Make sure that the clamping handle is in the up position for maximum ground clearance before operating the header transport.**
7. Attach the Tie-Down Bracket and Strap Assembly with ratchet to the outside of the Lower Bar. **DO NOT OVER TIGHTEN THE 1/2" BOLTS ON THE TOP OF THE ASSEMBLY, BUT ALLOW THE TIE-DOWN BRACKETS TO MOVE FREELY ALONG THE LOWER BAR.**

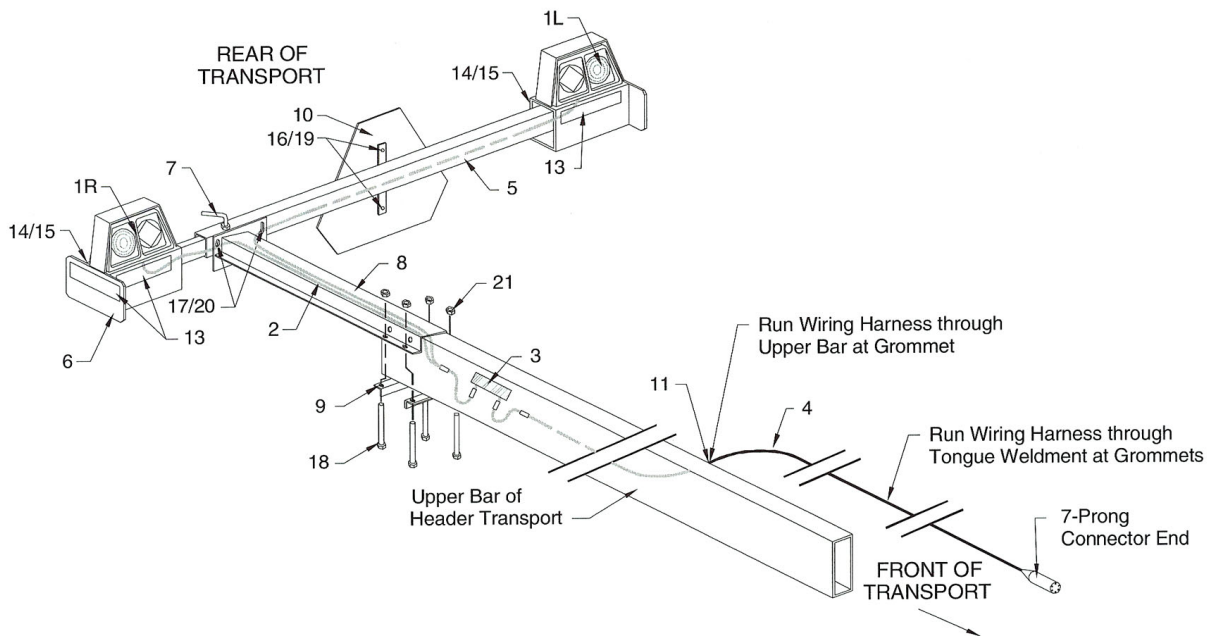
PARTS DIAGRAM



PARTS LIST

| # | Part # | Description | Qty | # | Part # | Description | Qty |
|-----|-----------|---|-----|----|--------------|---|-----|
| 1 | TA-874 | Regular Long Tongue for HT-874 | 1 | 27 | 104581 | Spindle Washer | 4 |
| 1 | TA-874L | Regular Long Tongue for HT-874L, HT-874XL & HT-874XL-36 | 1 | 28 | 103289 | Slotted Spindle Nut | 4 |
| 2 | TB-610 | Tongue Bolt 1 1/4" Rd x 11 3/4" | 1 | 29 | CP-316 | Cotter Pin | 4 |
| 3 | HN-114 | 1 1/4" Hex Nut | 4 | 30 | 103969 | Dust Cap | 4 |
| 4 | KP-610 | King Pin Vertical Hitch Bolt 1 1/4" x 7 3/4" | 1 | 31 | WR-146 | Wheel Rim, 6 hole 14" x 6" | 4 |
| | | | | 31 | WR-156 | Wheel Rim, 6 hole 15" x 6" | 4 |
| 5 | HW-68 | Hitch Weldment Complete | 1 | 32 | 4187 | Studs (#4187) (1/2"-20) | 24 |
| 6 | BB-58 | 5/8"ID Bronze Bushing | 4 | 33 | 5552 | Lug Nut (#5552) | 24 |
| 7 | SB-58 | Special Step Bolt with Nut | 4 | 34 | 1633 | Grease Fitting | 4 |
| 8 | TRE-78L | Tie Rod End, Left | 2 | 35 | LLB-874 | Large Lower Bar x 152" for (HT-874) | 1 |
| 8 | TRE-78R | Tie Rod End, Right | 2 | 35 | LLB-874L | Large Lower Bar x 176" for HT-874L | 1 |
| 9 | HN-78L | 7/8"-14 Nut, Left | 2 | 35 | LLB-874XL | Large Lower Bar x 194" for HT-874XL & HT-874XL-36 | 1 |
| 9 | HN-78R | 7/8"-14 Nut, Right | 2 | 36 | UB-874S | Steel Upper Bar (4" x 6" x 24') for HT-874 | 1 |
| 10 | TR-78 | Tie Rod, 7/8" x 24" Rd | 2 | 36 | UB-874SXL | Steel Upper Bar (4" x 6" x 30') for HT-874L or HT-874XL | 1 |
| 11L | SA-874L | 1 3/4" Spindle & "U" Assy, Left | 1 | 36 | UB-874SXL-36 | Steel Upper Bar (4" x 6" x 36') for HT-874XL-36 | 1 |
| 11R | SA-874R | 1 3/4" Spindle & "U" Assy, Right | 1 | 37 | AB-874 | Adjustable Brackets for Upper Bar (2 pcs) | 2 |
| 12 | BB-114S | 1 1/4"ID Bronze Bushing | 4 | 38 | HM-874NS | Adjustable Header Mounts (with decals) (New Style) | 2 |
| 13 | FA-874 | Running Gear, Front Axle only less hitch, etc. | 1 | 39 | FW-12 | 1/2" Flat Washer | 4 |
| 14 | BA-874 | Running Gear, Rear Axle only less Hubs, etc. | 1 | 40 | 12LN | 1/2" Lock Nut | 20 |
| 15 | SS-134678 | Spindle, Strt. 1 3/4" Dia. X 6 7/8" | 4 | 41 | HP-586 | 5/8" x 6" Hitch Pin w/locking pin | 2 |
| 16 | SB-114 | Spindle Bolt, 1 1/4" x 9 1/4" | 2 | 42 | MB-585 | 5/8" x 5" HHMB | 2 |
| 17 | FW-114 | Flat Washer, 1 1/4" ID | 2 | 43 | LN-58 | 5/8" Lock Nut | 2 |
| 19 | TS-615 | Large Tongue Spring | 1 | 44 | MB-12412 | 1/2" x 4 1/2" HHMB | 16 |
| 20 | SLB-874 | Small Lower Bar 2" x 4" x 152" (HT-874) | 1 | 45 | SB-12 | 1/2" Slide Bolt Weldment | 4 |
| 20 | SLB-874L | Small Lower Bar 2" x 4" x 176" (HT-874L) | 1 | 46 | UBC-2 | Upper Bar Clamp | 2 |
| 20 | SLB-874XL | Small Lower Bar 2" x 4" x 194" (HT-874XL; HT-874XL-36) | 1 | 47 | 12HDN | 1/2" Handle Nut | 4 |
| 21 | 105218 | Hub, with studs, nuts and cups | 4 | 48 | 12LW | 1/2" Lock Washer | 4 |
| 22 | 103953 | Grease Seal | 4 | 49 | TDB-2 | Tie Down Bracket and Strap Assembly | 2 |
| 23 | 104579 | Cone (large) 104579 or LM-48548 Inner | 4 | 50 | MB-38312 | 3/8" x 3 1/2" Bolt w/Lock Nut | 4 |
| 24 | 104082 | Cone (small) 104082 or LM-67048 Outer | 4 | 51 | TDS-1 | Tie Down Strap and Hook only | 2 |
| 25 | 104580 | Cup (large) 104580 or LM-48510 | 4 | 52 | RA-1 | Ratchet | 2 |
| 26 | 104081 | Cup (small) 104081 or LM-67010 | 4 | 53 | 3412P | 3/4" x 12" Pin | 4 |
| | | | | 54 | 78HDN | 7/8" Handle Nut | 2 |

HEADER TRANSPORT LIGHT KIT AND SMV EMBLEM ASSEMBLY



| # | Part # | Description | Qty | # | Part # | Description | Qty |
|----|--------|------------------------|-----|----|-------------|----------------------------------|-----|
| 1L | RLT-L | Light Assembly (L/H) | 1 | 13 | RD-A1 | Amber Reflective Decal | 8 |
| 1R | RLT-R | Light Assembly (R/H) | 1 | 14 | RD-R1 | Red Reflective Decal | 2 |
| 2 | LWH-1 | Light Wiring Harness | 1 | 15 | RD-O1 | Orange Reflective Decal | 2 |
| 3 | LE-1B | Light Enhancer | 1 | 16 | 141-CB | 1/4" x 1" Bolt | 2 |
| 4 | WH-1NC | Main Wiring Harness | 1 | 17 | 12114-G5-FB | 1/2" x 1 1/4" (Gr 5) Flange Bolt | 2 |
| 5 | LMB-1 | Light Mounting Bracket | 1 | 18 | 125-HB | 1/2" x 5" Bolt | 4 |
| 6 | TA-1 | Telescoping Arm | 1 | 19 | 14-LN | 1/4" Lock Nut | 2 |
| 7 | HDN-12 | Handle Nut | 1 | 20 | 12-FN | 1/2" Flange Nut | 2 |
| 8 | EB-1 | Extension Bracket | 1 | 21 | 12-N | 1/2" Nut | 4 |
| 9 | AIS-2 | Angle Iron Support | 2 | 22 | 38STS | Self Tapping Screw (large) | 1 |
| 10 | SMV-1 | SMV Emblem | 1 | 23 | 14STS | Self Tapping Screw (small) | 8 |
| 11 | GR-134 | Rubber Grommet (large) | 3 | 24 | 12-WR | 1/2" Regular Washer | 4 |
| 12 | WC-1 | Wire Clip | 1 | | | | |

WARNING

- * Be sure to adjust lights to within 16" of the furthest extremity of the combine header.
- * Be certain all flasher and turn indicator lights are working properly BEFORE incidental highway travel.

SET-UP INSTRUCTIONS

Place extension bracket at rear end of Upper Bar. Attach using the two angle iron supports and secure with four 1/2" x 5" bolts, washer and nuts.

Place Light Mounting Bracket at the end of the Extension Bracket Arm so the Light Mounting Bracket is level or horizontal and extends towards the center of the header transport. Secure using two 1/2" x 1 1/4" Flange Bolts (Gr 5) and Flange Nuts.

Slide the extendable portion of the Telescoping Arm into Light Mounting Bracket and tighten the Handle Nut until the bracket is secure. Extend the arm until the light assembly is within 16" of the outer extremity of the unit.

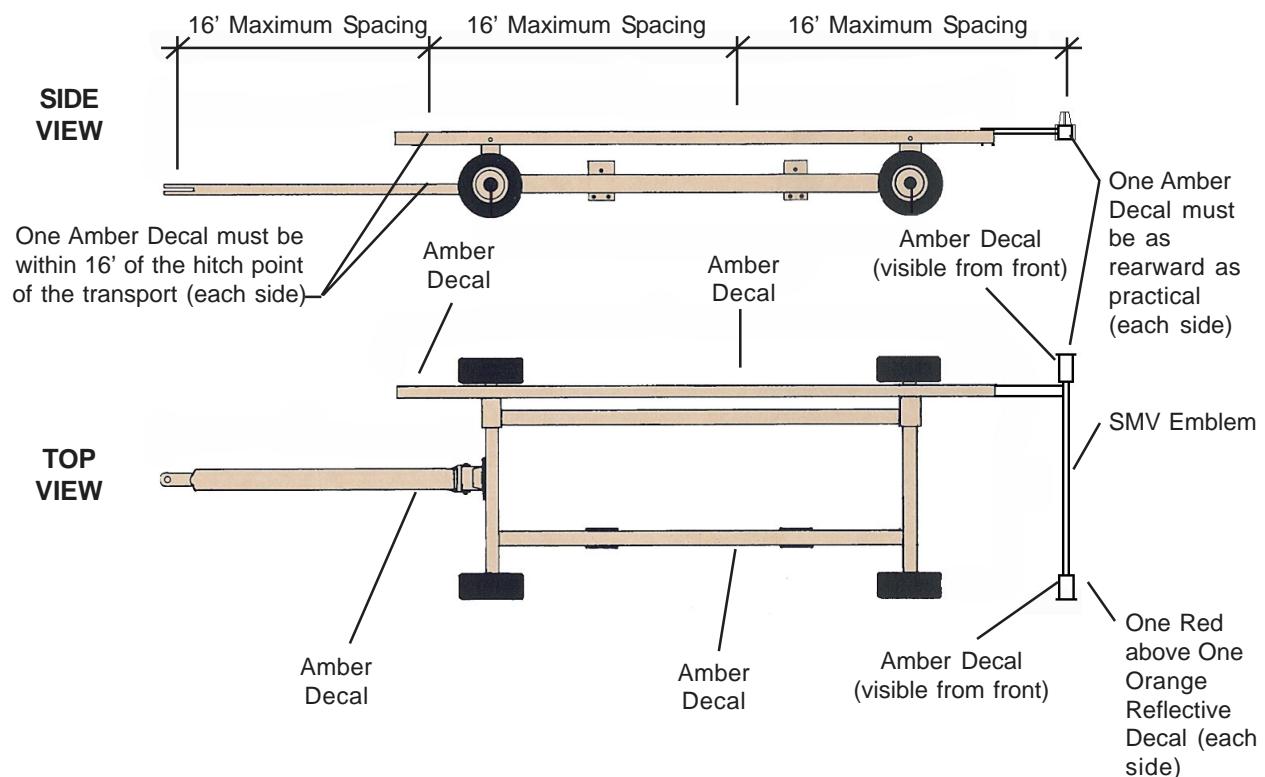
Mount one light assembly at the end of the Light Mounting Bracket (L/H light) and another assembly at the end of the Telescoping Arm (R/H light). Secure each light assembly using four small self-tapping screws. Each light assembly should be mounted so the single amber light is positioned towards the outside of the header, and the amber and red lights are facing the rearward. Secure the SMV Emblem to the Light Mounting Bracket using two 1/4" x 1" Bolt and Lock Nuts. Be sure the SMV Emblem remains visible from the rear during transport.

Place one amber reflective decal at the outward and front side of both the Telescoping Arm and Light Mounting Bracket as shown. Place one Red and Orange Reflective Decal on the rearward end of the Telescoping Arm and Light Mounting Bracket. The red reflective decal should be place directly above the orange decal.

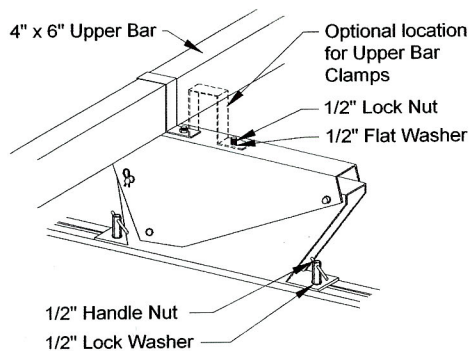
Slide the Main Wiring Harness through the rubber grommets of the tongue and into the Upper Bar until the harness extends through the back end of the Upper Bar. Connect the Main Wiring Harness to the corresponding plug on the Light Enhancer. Attach the smaller Light Wiring Harness to the remaining plug on the Light Enhancer. Connect each set of wires on the Light Wiring Harness to each Light Assembly. Securely place the Light Enhancer and excess wiring inside the Upper Bar to prevent damage from weather or operation.

Place the Wire Clip around the Main Wiring Harness and secure to the rear side of the front axle using the large self tapping screw provided. Be sure the wiring harness is secured properly to avoid any possible pinch points.

Place the remaining Amber Reflective Decals on the Header Transport as indicated below:

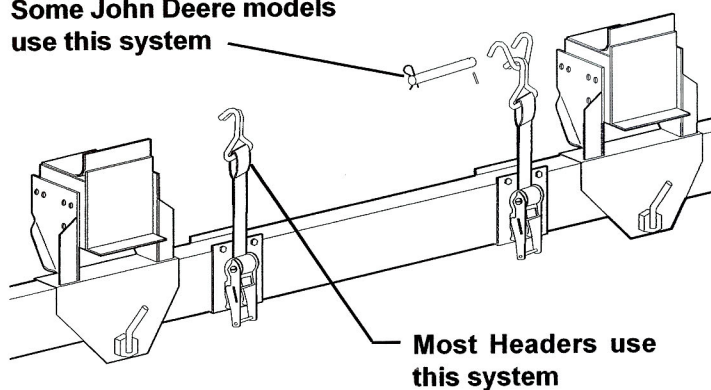


ADJUSTABLE BRACKET FOR UPPER BAR (AB-874)

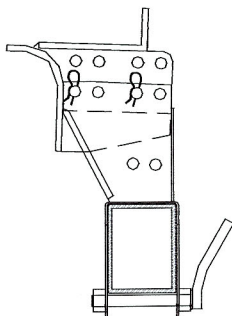


ADJUSTABLE TIE-DOWN BRACKET, HOOK & STRAP ASSEMBLY (TDB-2)

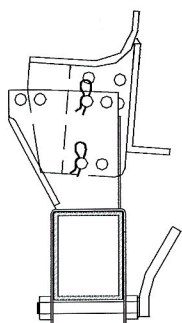
Some John Deere models
use this system



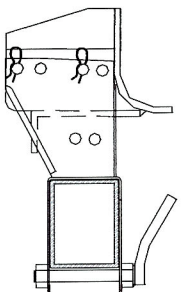
POSSIBLE HEADER MOUNT POSITIONS FOR FRAME, STAND LEG AND RECTANGULAR FRAME HEADERS



Possible Header Mount positions for Rectangular Frame Headers. The Header Mount can be adjusted up, down, forward or backwards, depending upon the type of header being transported.



Possible Header Mount positions for Round Frame Headers. The Header Mount can be adjusted up, down, forward or backwards, depending upon the type of header being transported.



Possible Header Mount positions for Stand Leg Headers. The Header Mount can be adjusted up, down, forward or backwards, depending upon the type of header being transported.

INITIAL OPERATION/MAINTENANCE

WARNING

BE CERTAIN THAT ALL POWER IS SHUT OFF BEFORE SERVICING THE HEADER TRANSPORT

Before the header transport is put into service:

Has the Slow-Moving Vehicle Emblem been properly positioned at the rear of the header transport?

Have all danger, warning caution and important signs been read and understood on the equipment? If employees or others use or are near this equipment, make sure that they also have read and understood all danger, warning, caution and important signs on the equipment and have also read the operator's manual.

Has the header transport been properly fastened to the tractor? Use a good quality hitch pin with clip and safety chains.



SAFETY CHAIN USER INSTRUCTIONS

- a) Secure the safety chain by looping it around the tongue support located on the underside of the outer tongue. Extend the chain through the clevis hitch and connect to the towing machine's attaching bar.
- b) Be sure to run the safety chain through the clevis hitch as shown. This will provide an intermediate support for the safety chain.
- c) Do Not allow more slack than necessary for articulation (max. 9 inches)
- d) Do Not use any intermediate support as the attaching point.
- e) Store the safety chain by securing it around the outer tongue.
- f) Replace the safety chain if one or more links or end fittings are broken, stretched or otherwise damaged or deformed.

Are all braces, bolts, nuts, lug bolts, and lug nuts properly fastened?

Are the rear amber extremity lights properly positioned? Extend lights within 16" of the left and right extremities of the header.

OPERATING INSTRUCTIONS/MAINTENANCE

Adjust the brackets on the header transport to best fit your make and model header. When mounting the header, NEVER position yourself under or near the header. Securely fasten the header to the header transport.

After mounting the header on the header transport, turn the front wheels to make sure that the header is positioned clear of tire movement.

Do not exceed the load and size limits of the unit. Maintain speeds of 20 mph or less.

Keep the tires properly inflated. Both under inflation and over inflation can greatly reduce tire life.

Inspect bracing and welds periodically and repair immediately if needed. Failure to repair could cause extensive damage and greatly reduce the life of the unit.

Inspect tie rods and replace bronze bushings in the steering assembly when needed.

Repack the bearings in the hub assembly once a year or as needed. Use a good quality bearing lubricant such as Bearing Gard MK1 or equivalent.

Be sure to check the hub nuts often and keep them properly tightened.

SERVICE / MAINTENANCE RECORD

| DATE | DESCRIPTION | NOTES |
|------|-------------|-------|
| | | |
| | | |
| | | |
| | | |
| | | |
| | | |
| | | |
| | | |
| | | |
| | | |
| | | |
| | | |
| | | |
| | | |
| | | |
| | | |
| | | |
| | | |
| | | |
| | | |
| | | |