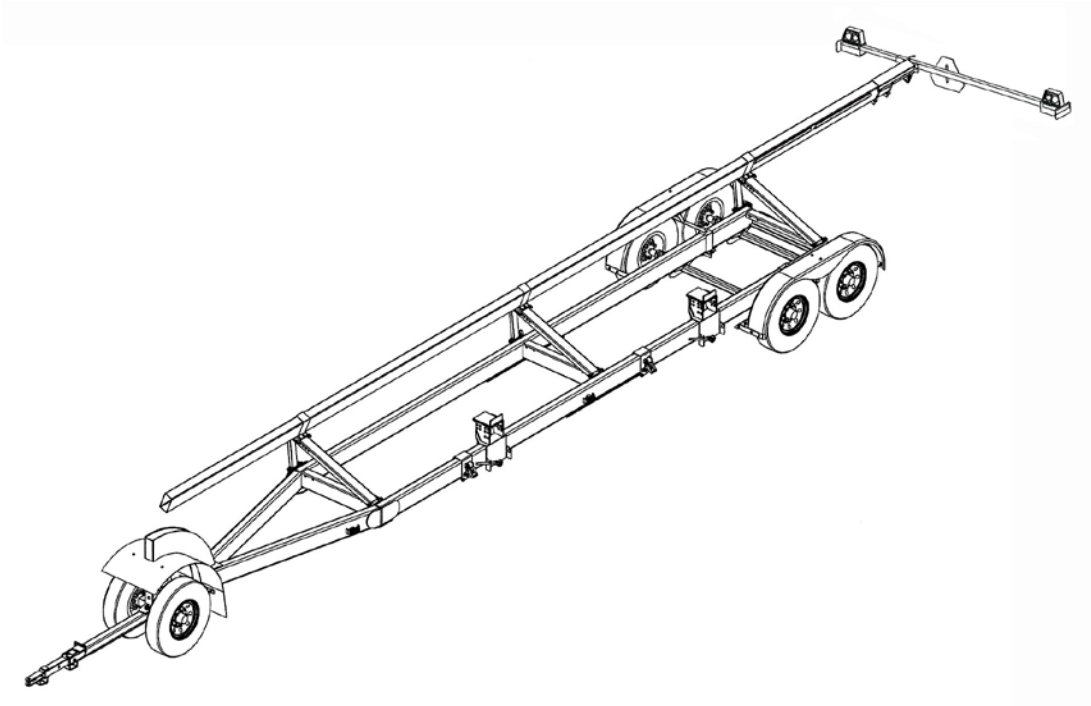


OPERATOR'S MANUAL

Set-Up Instructions and Parts Catalog for

Models TB-3500A and TB-6000A Trail-Blazer Header Transports



Commercial Grade Header Transport

Ag Version



J. & M. Manufacturing Co., Inc.

P.O. Box 547

Fort Recovery, OH 45846

Phone: (419) 375 2376 Fax: (419) 375-2708

E-mail: sales@jm-inc.com Website: www.jm-inc.com

REV-12-15-08

TO THE DEALER:

Read manual instructions and safety rules. Make sure all items on the Dealer's Pre-Delivery and Delivery Check Lists in the Operator's Manual are completed before releasing equipment to the owner.

The dealer must complete the Warranty Registration Card attached to the front inside cover of this manual and return to J. & M. Mfg. Co., Inc. at the address indicated on the card. **Warranty claims will be denied if the Warranty Registration Card has not been completed and returned.**

EXPRESS WARRANTY:

J. & M. Mfg. Co. Inc. warrants against defects in construction or materials for a period of ONE year. We reserve the right to inspect and decide whether material or construction was faulty or whether abuse or accident voids our guarantee.

Warranty service must be performed by a dealer or service center authorized by J. & M. Mfg. Co. Inc. to sell and/or service the type of product involved, which will use only new or remanufactured parts or components furnished by J. & M. Mfg. Co. Inc. Warranty service will be performed without charge to the purchaser for parts or labor based on the Warranty Labor Times schedule. Under no circumstance will allowable labor times extend beyond the maximum hours indicated in the Warranty Labor Times schedule for each warranty procedure. The purchaser will be responsible, however, for any service call and/or transportation of the product to and from the dealer or service center's place of business, for any premium charged for overtime labor requested by the purchaser, and for any service and/or maintenance not directly related to any defect covered under the warranty. Costs associated with equipment rental, product down time, or product disposal are not warrantable and will not be accepted under any circumstance.

Each warranty term begins on the date of product delivery to the purchaser. Under no circumstance will warranty be approved unless (i) the product warranty registration card (attached to the inside of the Operator's Manual) has been properly completed and submitted to the equipment manufacturer. This Warranty is effective only if the warranty registration card is returned within 30 days of purchase.

This warranty does not cover a component which fails, malfunctions or is damaged as a result of (i) improper modification or repair, (ii) accident, abuse or improper use, (iii) improper or insufficient maintenance, or (iv) normal wear or tear. This warranty does not cover products that are previously owned and extends solely to the original purchaser of the product. Should the original purchaser sell or otherwise transfer this product to a third party, this Warranty does not transfer to the third party purchaser in any way. J. & M. Mfg. Co. Inc. makes no warranty, express or implied, with respect to tires or other parts or accessories not manufactured by J. & M. Mfg. Co. Inc. Warranties for these items, if any, are provided separately by their respective manufacturers.

THIS WARRANTY IS EXPRESSLY IN LIEU OF ALL OTHER WARRANTIES OR CONDITIONS, EXPRESS, IMPLIED OR STATUTORY, INCLUDING ANY IMPLIED WARRANTY OF MERCHANTABILITY OR FITNESS FOR PARTICULAR PURPOSE.

In no event shall J. & M. Mfg. Co. Inc. be liable for special, direct, incidental or consequential damages of any kind. The exclusive remedy under this Warranty shall be repair or replacement of the defective component at J. & M. Mfg. Co. Inc.'s option. This is the entire agreement between J. & M. Mfg. Co. Inc. and the Owner about warranty and no J. & M. Mfg. Co. Inc. employee or dealer is authorized to make any additional warranty on behalf of J. & M. Mfg. Co. Inc.

The manufacturer reserves the right to make product design and material changes at any time without notice. They shall not incur any obligation or liability to incorporate such changes and improvements in products previously sold to any customer, nor shall they be obligated or liable for the replacement of previously sold products with products or parts incorporating such changes.

SERVICE:

The equipment you have purchased has been carefully manufactured to provide dependable and satisfactory use. Like all mechanical products, it will require cleaning and upkeep. Lubricate the unit as specified. Observe all safety information in this manual and safety signs on the equipment.

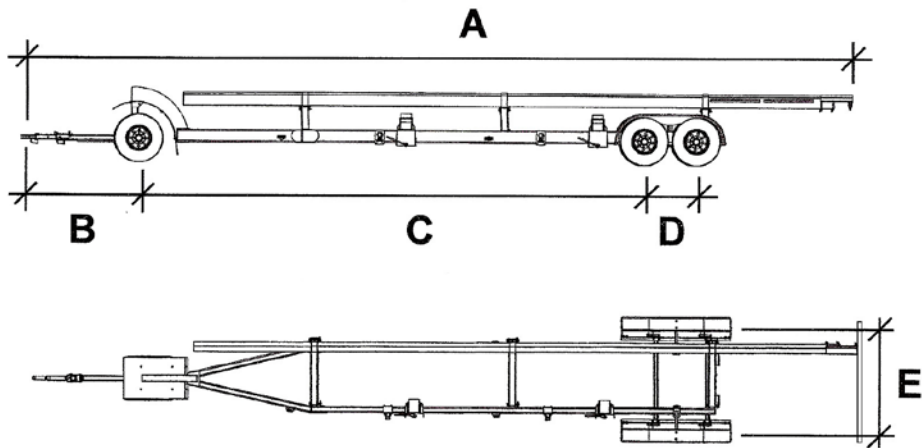
For service, your authorized J. & M. dealer has trained mechanics, genuine J. & M. service parts, and the necessary tools and equipment to handle all your needs.

Use only genuine J. & M. service parts. Substitute parts may void the warranty and may not meet standards required for safe and satisfactory operation. Record the model number and serial number of your equipment in the spaces provided:

Serial # _____ Purchase Date: _____ Purchased From: _____

Please provide this information to your dealer to obtain the correct parts:

MODELS TB-3500A and TB-6000A Header Transports Specifications



DIMENSIONS (by Upper Bar Length)				
	32'	38'	42'	48'
A	41'-0"	47'-0"	52'-6"	58'-6"
B	6'-0"	6'-0"	6'-0"	6'-0"
C	26'-0"	26'-0"	26'-0"	30'-0"
D	2'-10"	2'-10"	2'-10"	2'-10"
E	6'-0"	6'-0"	6'-0"	6'-0"

SPECIFICATIONS	
Capacity (Net)	8,750 lbs (TB-3500A) 15,700 lbs (TB-6000A)
Weight (approx.)	3,260 lbs (TB-3500A) 3,500 lbs (TB-6000A)
Wheels	15" x 6" (TB-3500A) 16" x 6" (TB-6000A)
Tires	225/75R15D (TB-3500A) 235/85R16D (TB-6000A)
Hubs	6 bolt
Spindles	Two - 2-1/4" dia. (front) and Four - 2-1/2" dia. (rear)
Main Frame	4" x 8" x 3/16" steel tubing
Steel Upper Bar	4" x 8" x 3/16" steel tubing
Upper Bar Lengths	32', 38', 42' or 48'
Adj. Header Mounts	Standard
Tie Down Straps	Standard





GENERAL INFORMATION

TO THE OWNER:

The purpose of this manual is to assist you in operating and maintaining your running gear in a safe manner. Read it carefully. It furnishes information and instructions that will help you achieve years of dependable performance and help maintain safe operating conditions. If this machine is used by an employee or is loaned or rented, make certain that the operator(s), prior to operating:

1. Is instructed in safe and proper use.
2. Reviews and understands the manual(s) pertaining to this machine.

Throughout this manual, the term **IMPORTANT** is used to indicate that failure to observe can cause damage to equipment. The terms **CAUTION**, **WARNING** and **DANGER** are used in conjunction with the Safety-Alert Symbol, (a triangle with an exclamation mark), to indicate the degree of hazard for items of personal safety. When you see this symbol, carefully read the message that follows and be alert to the possibility of personal injury or death.

	This Safety-Alert symbol indicates a hazard and means ATTENTION! BECOME ALERT! YOUR SAFETY IS INVOLVED!
	Indicates an imminently hazardous situation that, if not avoided, will result in death or serious injury.
	Indicates a potentially hazardous situation that, if not avoided, could result in death or serious injury, and includes hazards that are exposed when guards are removed.
	Indicates a potentially hazardous situation that, if not avoided, may result in minor or moderate injury.
IMPORTANT	Indicates that failure to observe can cause damage to equipment.
NOTE	Indicates helpful information.

GENERAL INFORMATION (continued)

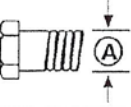
BOLT TORQUE CHART

Always tighten hardware to these values unless a different torque or tightening procedure is listed for a specific application.


Fasteners must always be replaced with the same grade as specified in the manual parts list.

Always use the proper tool for tightening hardware. SAE for SAE hardware and Metric for metric hardware.

Make sure fastener threads are clean and you start the thread engagement properly. All torque values are given to specification used on hardware defined by SAE J1701 & J1701M (Jul 96).




**SAE SERIES
TORQUE
CHART**




SAE Bolt Head
Identification

**SAE Grade 2
(No Dashes)**

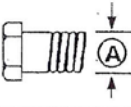


**SAE Grade 5
(3 Radial Dashes)**



**SAE Grade 8
(6 Radial Dashes)**

Ⓐ Diameter (Inches)	Wrench Size	MARKING ON HEAD					
		SAE 2		SAE 5		SAE 8	
		Lbs.-Ft.	N-m	Lbs.-Ft.	N-m	Lbs.-Ft.	N-m
1/4	7/16"	6	8	10	13	14	18
5/16	1/2"	12	17	19	26	27	37
3/8	9/16"	23	31	35	47	49	67
7/16	5/8"	36	48	55	75	78	106
1/2	3/4"	55	75	85	115	120	163
9/16	13/16"	78	106	121	164	171	232
5/8	15/16"	110	149	170	230	240	325
3/4	1-1/8"	192	261	297	403	420	569
7/8	1-5/16"	306	416	474	642	669	907
1	1-1/2"	467	634	722	979	1020	1383



METRIC SERIES

TORQUE

CHART

8.8

Metric Bolt Head Identification

Metric Grade 8.8

10.9

Metric Grade 10.9

Diameter & Thread Pitch (Millimeters)	Wrench Size	COARSE THREAD				FINE THREAD				Diameter & Thread Pitch (Millimeters)
		MARKING ON HEAD				MARKING ON HEAD				
		Metric 8.8		Metric 10.9		Metric 8.8		Metric 10.9		
		N-m	Lbs.-Ft.	N-m	Lbs.-Ft.	N-m	Lbs.-Ft.	N-m	Lbs.-Ft.	
6 x 1.0	10 mm	8	6	11	8	8	6	11	8	6 x 1.0
8 x 1.25	13 mm	20	15	27	20	21	16	29	22	8 x 1.0
10 x 1.5	16 mm	39	29	54	40	41	30	57	42	10 x 1.25
12 x 1.75	18 mm	68	50	94	70	75	55	103	76	12 x 1.25
14 x 2.0	21 mm	109	80	151	111	118	87	163	120	14 x 1.5
16 x 2.0	24 mm	169	125	234	173	181	133	250	184	16 x 1.5
18 x 2.5	27 mm	234	172	323	239	263	194	363	268	18 x 1.5
20 x 2.5	30 mm	330	244	457	337	367	270	507	374	20 x 1.5
22 x 2.5	34 mm	451	332	623	460	495	365	684	505	22 x 1.5
24 x 3.0	36 mm	571	421	790	583	623	459	861	635	24 x 2.0
30 x 3.0	46 mm	1175	867	1626	1199	1258	928	1740	1283	30 x 2.0

TABLE OF CONTENTS

INTRODUCTION	2
EXPRESS WARRANTY	2
SPECIFICATIONS	3
GENERAL INFORMATION	4
BOLT TORQUE CHART	5
SAFETY RULES	7
SAFETY	7
SAFETY SIGNS	8
SET-UP INSTRUCTIONS	8-12
REPAIR PARTS LIST	
Main Frame and Upper Bar	13
Front Axle Assembly	13
Tie-Down Bracket and Adjustable Header Mount	14
Adjustable Upper Bar Mount	14
Rear Axle Assembly	15-16
Rear Fender Assembly	16
Light Kit	17-18
INITIAL OPERATION / MAINTENANCE	19
SERVICE / MAINTENANCE RECORD	20

SAFETY RULES

ATTENTION! BECOME ALERT! YOUR SAFETY IS INVOLVED!

- Safety is a primary concern in the design and manufacture of our products. Unfortunately, our efforts to provide safe equipment can be erased by an operator's single careless act. In addition, hazard control and accident prevention are dependent upon the awareness, concern, judgment, and proper training of personnel involved in the operation, transport, maintenance and storage of equipment.
- Make certain that the operator(s), prior to operating is instructed in safe and proper use and reviews and understands the manual(s) pertaining to this machine.
- Read this manual before you operate this machine. If you do not understand any part of this manual, or need more information, contact the manufacturer or your authorized dealer.

SAFETY

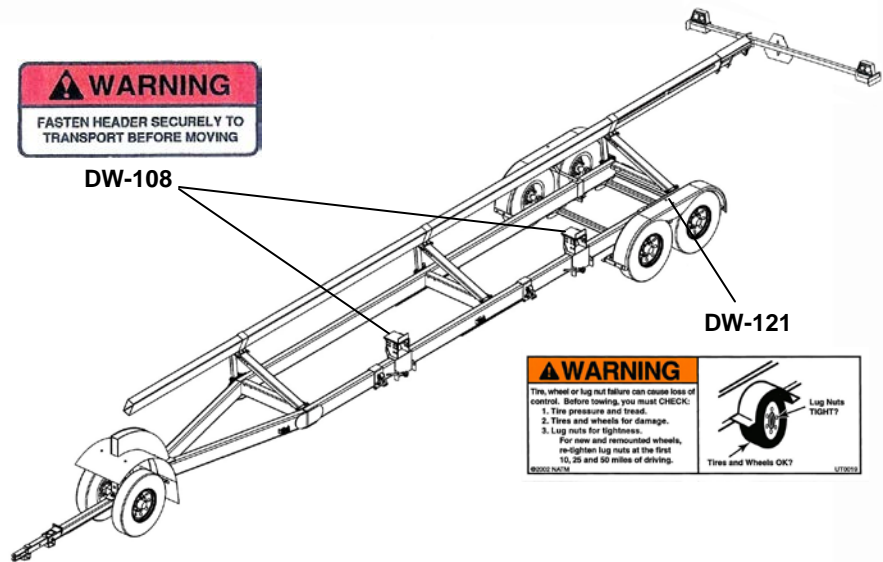
- ✓ Understand that your safety and the safety of other persons are measured by how you service, and operate this machine. Know the positions and functions of all controls before you try to operate them. Make sure to check all controls in a safe area before starting your work.
- ✓ The safety information given in this manual does not replace safety codes, federal, state or local laws. Make certain your machine has the proper equipment as designated by local laws and regulations.
- ✓ A frequent cause of personal injury or death is from persons falling off equipment and being run over. Do not permit persons to ride on this machine.
- ✓ Travel speeds should be such that complete control and machine stability is maintained at all times. Where possible, avoid operating near ditches, embankments and holes. Reduce speed when turning, crossing slopes and rough, slick or muddy surfaces.
- ✓ Collision of high speed road traffic and slow moving machines can cause personal injury or death. On roads, use flasher lights according to local laws. Keep slow-moving-vehicle emblem visible. Pull over to let faster traffic pass.
- ✓ Make sure that the header is fastened securely to the transport before moving.
- ✓ Make sure that everyone is clear of equipment before applying power or moving the machine. NEVER position yourself under or near header when mounting on header transport.
- ✓ Never adjust, service, clean or lubricate the header transport until all power is shut off.
- ✓ Make sure that the implement is fastened securely to the tractor by using the proper hitch pin, clip and safety chains.
- ✓ Before unhooking the implement from the towing unit, be sure to properly block the wheels to prevent the implement from moving.
- ✓ Never overload the header transport. Overloading the header transport is dangerous and can cause extensive damage.
- ✓ Do NOT exceed speeds in excess of 25 MPH. The header transport is designed for heavy loads at slow speeds. Also be sure slow moving vehicle emblem is attached to rear of wagon.
- ✓ IMPORTANT: Use caution when transporting. Be alert of the transport unit's overall width when approaching obstacles, such as post signs and poles, along the road. Check the transport width of the unit to ensure clearance before entering bridges.
- ✓ COMPLY WITH ALL SAFETY WARNINGS AND CAUTIONS IN THIS MANUAL AND IN THE COMBINE OPERATORS MANUAL.
- ✓ WARNING: BE SURE ALL LIGHTS ARE WORKING PROPERLY BEFORE HIGHWAY TRAVEL.

✓ SAFETY SIGNS

ATTENTION: BECOME ALERT! YOUR SAFETY IS INVOLVED!

Replace Immediately If Damaged or Missing!

IMPORTANT: Install new safety signs if the old signs are destroyed, lost, painted over or cannot be read. When parts are replaced that have safety signs, make sure you install a new sign with each new part. New signs are available from the manufacturer or your authorized dealer.

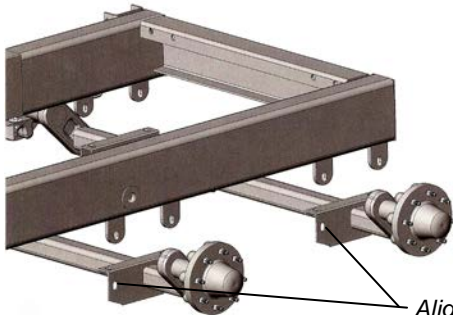


DECAL PARTS LIST

Item #	Part #	Description
1	DW-121	Warning: Tire, Wheel, Lug Nut
2	DW-108	Warning: Fasten Header Securely

SET-UP INSTRUCTIONS

IMPORTANT: Set-up work to be performed by qualified servicemen only.



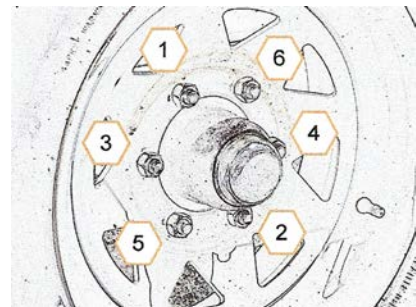
Align the holes on each side of the Dura-Flex Axle with the tabs welded to the underside of the Main Frame.

1. Mounting the Rear Axles

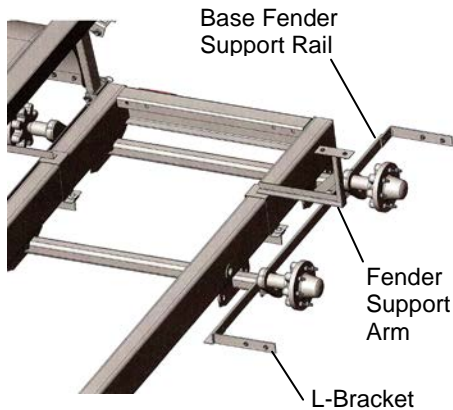
Secure the Dura-Flex Axles to the axle mounts located on the underside of the Header Transport Main Frame using four 5/8" x 1-3/4" Grade 5 bolts with eight 5/8" flat washers and four 5/8" locknuts. **NOTE: The axle should be positioned so the spindle is located toward the rear of the axle centerline.**

2. Mounting the Tires

Secure one tire and wheel assembly to each of the rear hub assemblies using the wheel nuts provided. Use a star pattern to tighten the spindle nuts according to SAE standards.



SET-UP INSTRUCTIONS (continued)

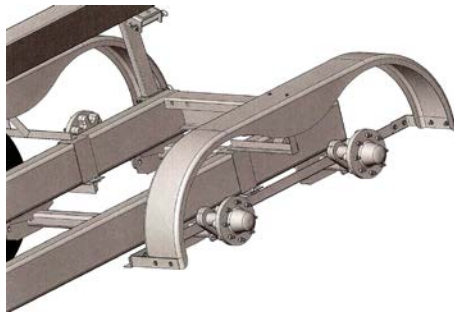


3. Mounting the Rear Fenders

Place one of the Base Fender Support Rail (left or right) on top of the two rear axles between the main frame and spindle as shown. Align the holes in the support rail with the rear axles and loosely secure to each axle using one 3/8" x 3 1/2" x 3 1/2" U-Bolt, two 3/8" flat washers and two 3/8" lock nuts.

IMPORTANT: Be sure the vertical face of the support rail faces the outside of the transport (toward the tires) and the support rail extends farther behind the second rear axle than it does the first rear axle. If the support rail does not project farther behind the second rear axle, the rail is located on the wrong side of the transport and the other rail should be used.

Repeat on opposite side of transport.



Slide the Fender Support Arm across the header transport main frame and loosely secure to the Angle Iron Support using two 1/2" x 1 1/2" Grade 5 bolts, two 1/2" washers and two 1/2" lock nuts. Mount the Fender to the top of the Fender Support Arm using two 3/8" x 1" flange bolts, two 3/8" rubber/metal washers and two 3/8" whiz nuts. Be sure the side tear drop of the fender is located toward the outside of the transport. Slide the Fender Support Arm along the main frame until the fender is centered above the tires to ensure proper clearance.

Repeat on opposite side of transport.

Mount one Fender L-Brackets to the front end of the fender using two 3/8" x 1" flange bolts, two 3/8" washers and two 3/8" whiz nuts. Secure one Fender L-Bracket and Light Mounting Bracket to the rear end of the fender using two 3/8" x 1" flange bolt, two 3/8" washers and two 3/8" whiz nuts. Secure the other side of the L-Bracket to the Base Fender Support Rail using two 3/8" x 1" flange bolts and two 3/8" whiz nuts. Repeat on opposite side of transport.

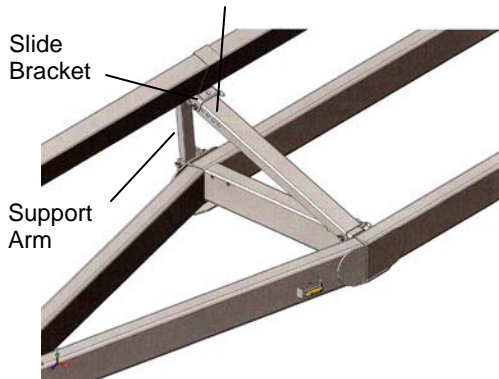


4. Mounting the Front Axle Assembly

Mount two wheels and tires to the hubs on the Ball Hitch Tongue and Axle Assembly. Use a star pattern to secure the wheel rim to the hub and tighten to SAE specifications. Once both wheels are secured to the front axle, raise the spring loaded pin on the Header Transport Main Frame and engage the ball hitch on the Front Axle Assembly. (Be sure the ball is greased before attaching to the gooseneck frame.) Once the ball hitch has engaged the locking tube, lower the spring loaded pin into the hole located on the Front Axle Assembly to prevent the assembly from unlatching during transport.

SET-UP INSTRUCTIONS (continued)

Upper Bar Channel Support

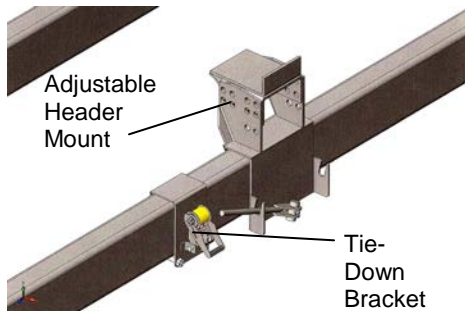


5. Attaching the Adjustable Brackets and Upper Bar

Secure the Upper Bar Channel Support to the left side of the three cross frame channels on the Main Base Frame using one 5/8" x 6" pin and hair pin. Secure the Upper Bar Support Arm to the vertical u-brackets located on the right side of the Main Base Frame using one 5/8" x 6" pin and hair pin. Connect the channel arm to the support arm using one 5/8" x 6" pin and hair pin. The support arms and channel arms can be adjusted and pinned to obtain many different heights and positions.

IMPORTANT: Make sure that all three assemblies are positioned at the same location and height to ensure the upper bar will fit properly.

Secure the Upper Bar Slide Bracket to each the three channel arm using two 5/8" x 6" pins and hair pins. Be sure to position all three slide brackets at the same position on the channel arm. Position the Upper Bar on top of the three slide brackets and secure using the Upper Bar Clamps and two 1/2" washers and two 1/2" lock nuts. The angle of the Upper Bar can be adjusted by removing and repositioning the 5/8" x 6" Hitch Pins in the Upper Bar Adjustable Brackets.



6. Attaching the Adjustable Header Mounts and Tie-Down Brackets

Place the Adjustable Header Mounts and Tie-Down Bracket Assemblies on the outside left tube of the header transport main frame as shown. Position one Adjustable Header Mount and Tie-Down Bracket Assembly on each side of the center cross member. Secure the Adjustable Header Mount to the outside tube using one 3/4" x 6 1/2" Stove Bolt and Clamp Handle Assembly.

Secure the Tie-Down Bracket to the outside tube using two 1/2" x 5 1/2" Bolts and two 1/2" Lock Nuts. Do Not Tighten the 1/2" bolts on the top of the assembly, but allow the Tie-Down Brackets to move freely along the outer tube. The Tie-Down Bracket can be secured with the bolts either above or below the main frame tubing as long as the ratchet is positioned with the strap directed upward.

SET-UP INSTRUCTIONS (continued)

7. Installing the Light Kit

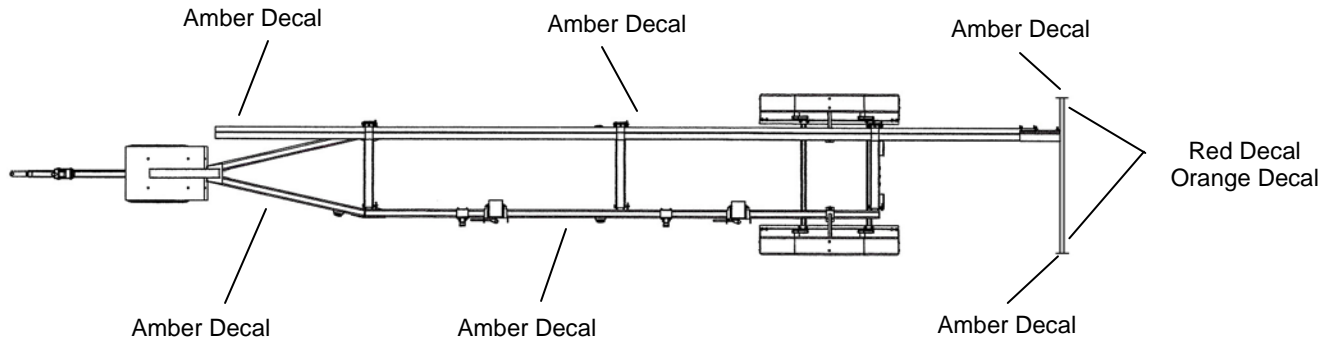
- A. Insert the Main Wiring Harness, end opposite the Flat-Four Connector End, through the grommet located at the front of the gooseneck of the Header Transport Main Frame and exit the A-Frame behind the gooseneck.
- B. Extend the Main Wiring Harness along the inside right side of the Header Transport Main Frame. Reinsert the Main Wiring Harness through the grommet located along the front of the A-Frame and extend the harness through the main frame tubing toward the rear of the transport.
- C. Exit the Main Wiring Harness at the grommet located behind the rear axles.
- D. Secure the Light Enhancer to the inside face of the rear Main Frame using two self-tapping screws. Connect the end of the Main Wiring Harness to the corresponding connector end of the Light Enhancer.
- E. Place the extension bracket at the rear end of the Upper Bar. Attach using the two angle iron supports and secure with four 1/2" x 7" bolts, washers and nuts.
- F. Place the Light Mounting Bracket at the end of the Extension Bracket Arm so the Light Mounting Bracket is level or horizontal and extends toward the center of the header transport. Secure using two 1/2" x 1 1/4" Grade 5 Flange Bolts and Flange Nuts.
- G. Slide the extendable portion of the Telescoping Arm into the Light Mounting Bracket and tighten the Handle Nut until the bracket is secure. Extend the arm until the light assembly is within 16" of the outer extremity of the unit.
- H. Mount one light assembly at the end of the Light Mounting Bracket (L/H light) and another assembly at the end of the Telescoping Arm (R/H light). Secure each light assembly using four small self-tapping screws. Each light assembly should be mounted so the single amber light is positioned toward the outside of the header, and the amber and red lights are facing rearward. Secure the SMV Emblem to the Light Mounting Bracket using two 1/4" x 1" Bolts and Lock Nuts. Be sure the SMV Emblem remains visible from the rear during highway transport.
- I. Place one amber reflective decal at the outward and front side of both the Telescoping Arm and Light Mounting Bracket as shown. Place one Red and Orange Reflective Decal on the rearward end of the Telescoping Arm and Light Mounting Bracket. The red reflective decal should be placed directly above the orange decal.
- J. The Main Wiring Harness should already be installed in the Main Frame Base Unit and connected to the Light Enhancer attached to the rear of the Main Frame Base Unit. Connect each light to the Light Enhancer using the Light Wiring Harness. Using the enclosed self tapping screws, secure the Wire Cover over the Light Wire Harness along the upper bar.



SET-UP INSTRUCTIONS (continued)

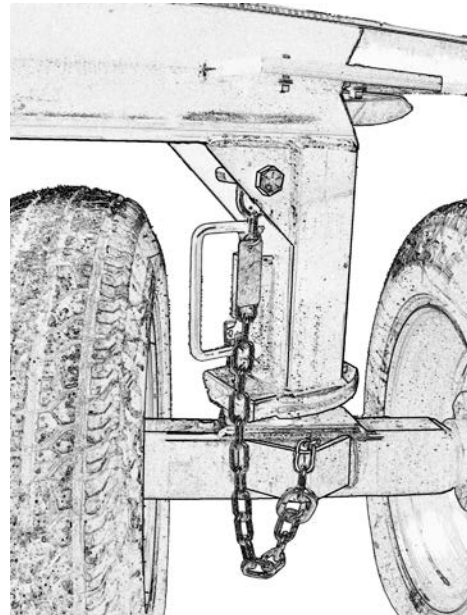
8. Placing the Amber, Red and Orange Reflective Decals

Place the reflective decals as shown below.



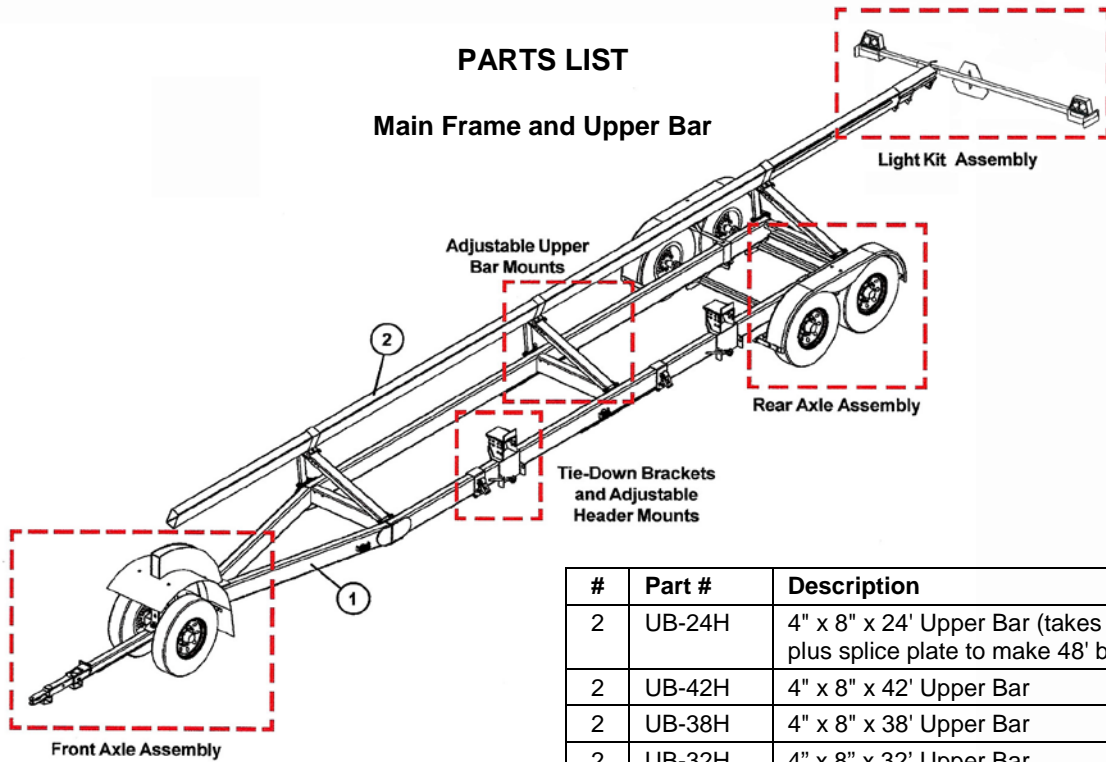
9. Installing the Safety Chain Around the Ball Hitch Axle Weldment

Bolt the ring end of the safety chain to the underside of the gooseneck using one 3/4" x 5" Grade 8 Bolt and 3/4" Lock Nut. Loop the chain around the Strap Weldment located on the back side of the front axle.



PARTS LIST

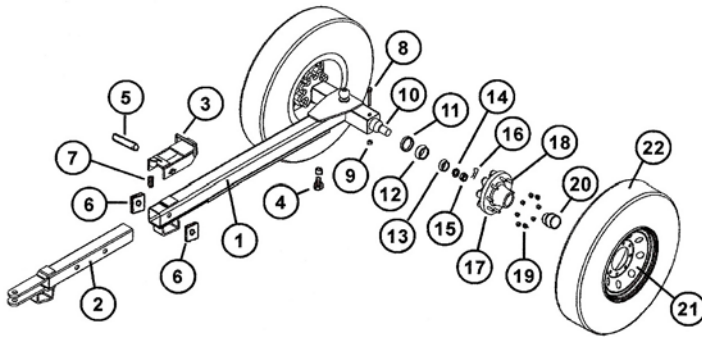
Main Frame and Upper Bar



#	Part #	Description
1	HHMF2	Header Transport Main Frame
1	HHMF2L	Transport Main Frame (for units equipped with 48' upper bar)

#	Part #	Description
2	UB-24H	4" x 8" x 24' Upper Bar (takes two plus splice plate to make 48' bar)
2	UB-42H	4" x 8" x 42' Upper Bar
2	UB-38H	4" x 8" x 38' Upper Bar
2	UB-32H	4" x 8" x 32' Upper Bar
3	SP-24H	Splice Plate (2 pcs)
4	12312B	1/2" x 3 1/2" Bolt
5	12-W	1/2" Regular Washer
6	12-LN	1/2" Lock Nut

Front Axle Assembly

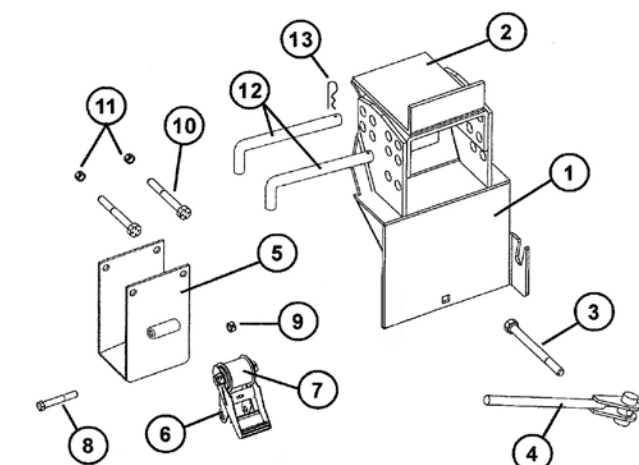


#	Part #	Description
1	OT-HC	Outer Tongue Weldment
2	IT-610NS	Inner Tongue Weldment
3	TL-610NS	Tongue Latch
4	78214-BS	7/8" x 2 1/4" Bolt with spacer
5	LS-610	Latch Shaft, 1" dia. x 5 3/4"
6	SB-212	Spacer Blocks
7	SS-615NS	Small Spring in Latch

#	Part #	Description
8	124BG5	1/2" x 4" Grade 5 Bolt
9	12LN	1/2" Lock Nut
10	FS-HC1	Front Spindle
11	27001500	Grease Seal
12	25580	Large Bearing (0170012C)
13	104082	Small Bearing
14	HC-SW	Spindle Washer
15	SN-HC1	Slotted Spindle Nut
16	HC-CP	Cotter Pin
17	3160333	Hub, 6 Bolt w/cups & studs
18	HCWS-1	Wheel Stud
19	WN-HC1	Wheel Nut
20	502019	Dust Cap
21	WR-156-6HC	Wheel Rim, 15x6, 6 hole
21	WR-166-6HC	Wheel Rim, 16x6, 6 hole
22	ST225-75E	15" New Tire (TB-3500A)
22	ST235-85D	16" New Tire (TB-6000A)
23	25520	Large Race (not shown)
24	67010	Small Race (not shown)

PARTS LIST

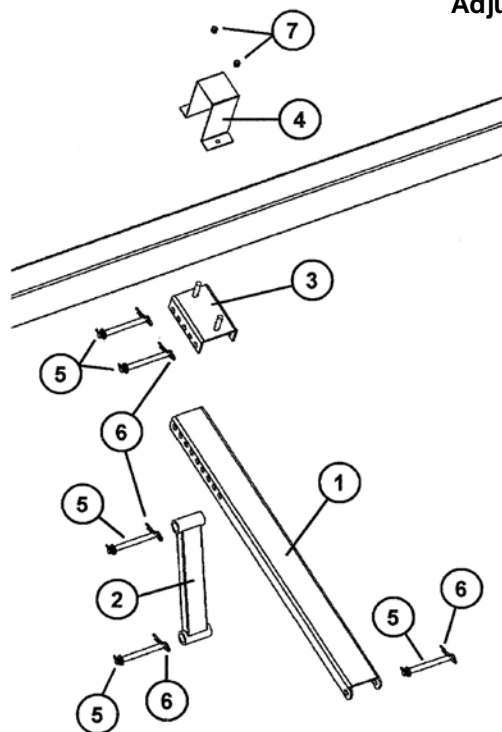
Tie-Down Bracket and Adjustable Header Mount



#	Part #	Description
1	AB-L2	Lower Adjustable Bracket
2	AB-U2L	Upper Adjustable Bracket, Left
2	AB-U2R	Upper Adjustable Bracket, Right
2	AB-U2L-MD	R/H Upper Adj. Bracket, MacDon
2	AB-U2R-MD	L/H Upper Adj. Bracket, MacDon

#	Part #	Description
3	SB34612	Stove Bolt, 3/4" x 6 1/2"
4	CHA2	Clamp Handle Assembly
5	TDMB-2	Tie Down Mounting Bracket
6	RA-1	Ratchet
7	TDS-1	Tie-Down Strap and Hook Assy
7	TDS-1L	Tie-Down Strap and Hook Assy w/D-Ring Strap (MacDon Heads)
8	12234G8B	1/2" x 2 3/4" Grade 8 Bolt
9	12NLN	1/2" Nylon Lock Nut
10	12512G5B	1/2" x 5 1/2" Grade 5 Bolt
11	12LN	1/2" Lock Nut
12	3412P	3/4" x 12" Pin
13	HC-CP	Cotter Pin
14	TDB-3	Tie Down Bracket Assy Complete
15	AHM-2	Adj. Header Mount Complete

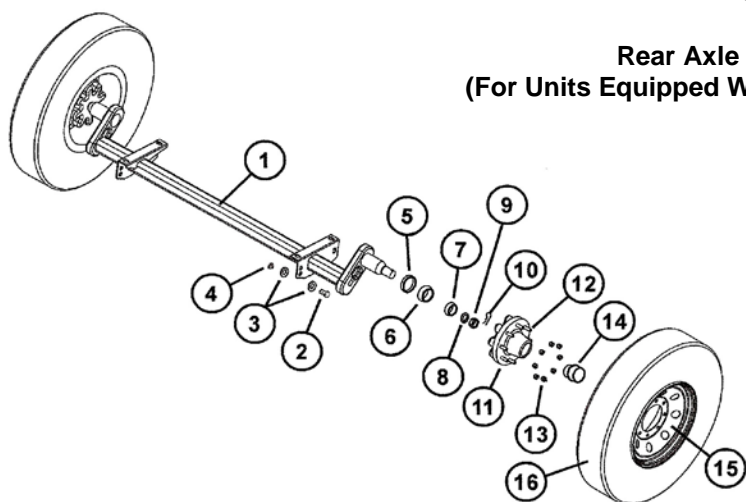
Adjustable Upper Bar Mount



#	Part #	Description
1	UBCM-3	Upper Bar Channel Mount
2	UBSA-3	Upper Bar Support Arm
3	UBSM-3	Upper Bar Slide Mount
4	UBC-3	Upper Bar Clamp
5	HP-586	5/8" x 6" Pin
6	316HP	3/16" Hair Pin
7	12LN	1/2" Lock Nut
8	12-WR	1/2" Regular Washer

PARTS LIST

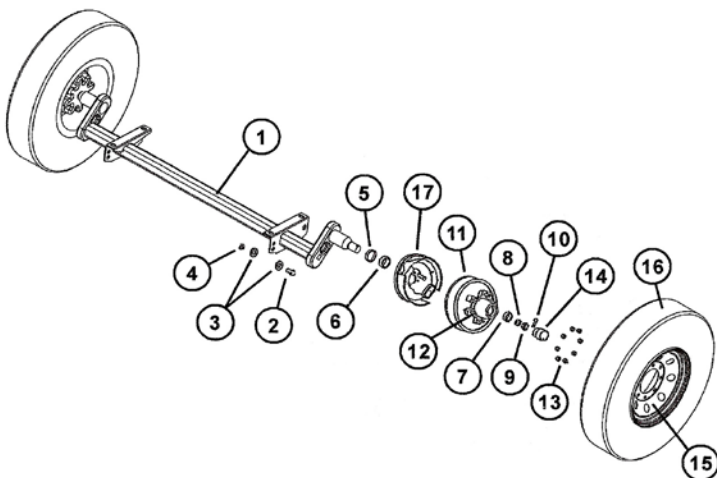
Rear Axle Assembly (For Units Equipped WITHOUT Rear Brakes)



#	Part #	Description
1	7350881	Dura-Flex Axle Weldment (TB-3500A)
1	7350881H	Dura-Flex Axle Weldment (TB-6000A)
2	58134G5B	5/8" x 1 3/4" Grade 5 Bolt
3	58FW	5/8" Flat Washer
4	58LN	5/8" Lock Nut
5	27001500	Grease Seal (TB-3500A)

#	Part #	Description
5	DL600	Grease Seal (TB-6000A)
6	25580	Large Bearing
7	104082	Small Bearing (TB-3500A)
7	15123	Small Bearing (TB-6000A)
8	HC-SW	Spindle Washer
9	SN-HC1	Slotted Spindle Nut
10	HC-CP	Cotter Pin
11	3160333	Hub, 6 Bolt (TB-3500A)
11	H-1206-S	Hub, 6 Bolt (TB-6000A)
12	HCWS-1	Wheel Stud
13	WN-HC1	Wheel Nut
14	502019	Dust Cap (TB-3500A)
14	DC-250	Dust Cap (TB-6000A)
15	WR-156-6HC	Wheel Rim, 15x6 6 hole, HC (TB-3500A)
15	WR-166-6HC	Wheel Rim, 16x6 6 hole, HC (TB-6000A)
16	ST225-75E	15" New Tire (TB-3500A)
16	ST235-85D	16" New Tire (TB-6000A)

Rear Axle Assembly (For Units Equipped WITH Optional Rear Brakes)

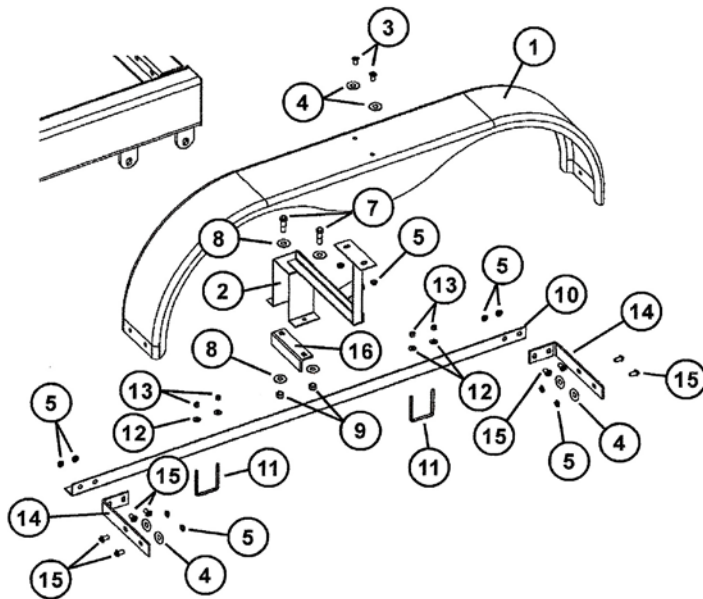


#	Part #	Description
1	7350881B	Dura-Flex Axle Weldment complete with brakes (TB-3500H)
1	7350881BH	Dura-Flex Axle Weldment complete with brakes (TB-6000H)
2	58134G5B	5/8" x 1 3/4" Grade 5 Bolt
3	58FW	5/8" Flat Washer
4	58LN	5/8" Lock Nut
5	27001500	Grease Seal (HHS-30B, HHS-36B)
5	DL600	Grease Seal (HHS-41B)
6	25580	Large Bearing
7	104082	Small Bearing (TB-3500H)
7	15123	Small Bearing (TB-6000H)

PARTS LIST
Rear Axle Assembly (continued)
(For Units Equipped WITH Optional Rear Brakes)

#	Part #	Description
8	HC-SW	Spindle Washer
9	SN-HC1	Slotted Spindle Nut
10	HC-CP	Cotter Pin
11	3160121G	Hub, 6 Bolt with brake drum with cups and studs (TB-3500H)
11	HD-1206-S	Hub, 6 Bolt with brake drum with cups and studs (TB-6000H)
12	HCWS-1	Wheel Stud
13	WN-HC1	Wheel Nut
14	502019	Dust Cap (TB-3500H)
14	DC-250	Dust Cap (TB-6000H)
15	WR-156-6HC	Wheel Rim, 15x6 6 hole (TB-3500H)
15	WR-166-6HC	Wheel Rim, 16x6, 6 hole (TB-6000H)
16	ST225-75E	15" New Tire (TB-3500H)
16	ST235-85D	16" New Tire (TB-6000H)
17	3160629G	12" Electric Brake (L/H) (TB-3500H)
17	3160630G	12" Electric Brake (R/H) (TB-3500H)
17	7705123	12" Electric Brake (L/H) (TB-6000H)
17	7705124	12" Electric Brake (R/H) (TB-6000H)
18	25520	Large Race (not shown)
19	67010	Small Race (TB-3500H)
19	15245	Small Race (TB-6000H)

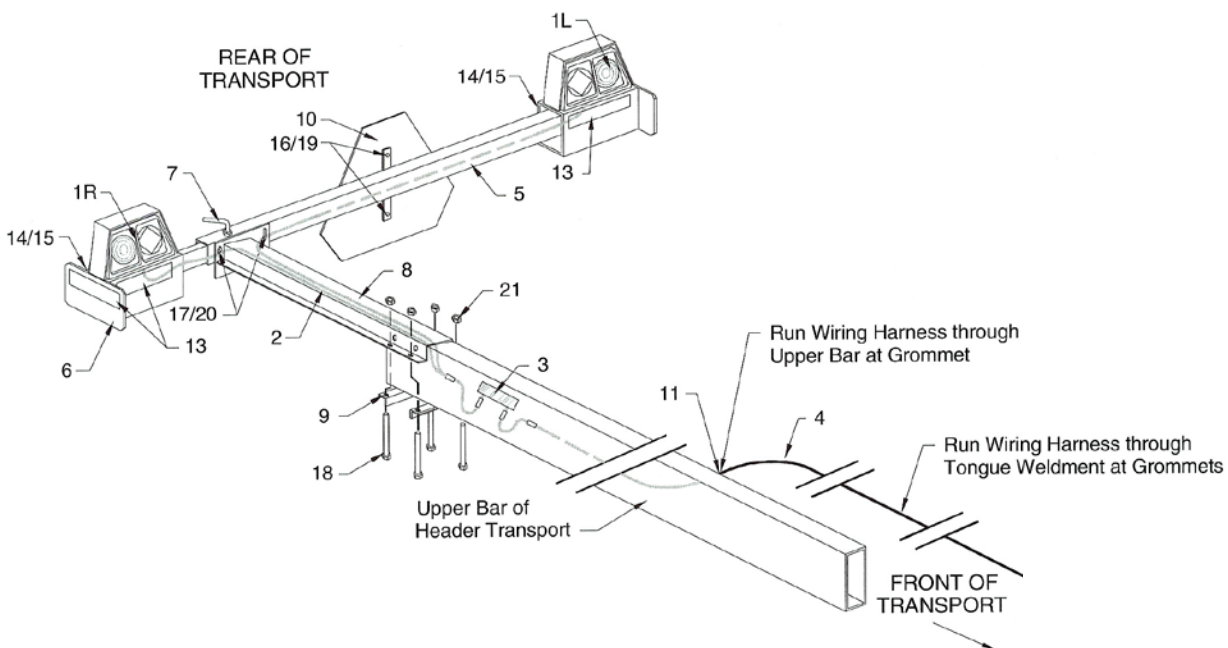
Rear Fender Assembly



#	Part #	Description
1	WF-1	Wheel Fender
2	FSA-2-15	Fender Support Arm (TB-3500A)
2	FSA-2-16	Fender Support Arm (TB-6000A)
3	381G5B	3/8" x 1" Grade 5 Bolt
4	38RMW	3/8" Rubber Metal Washer
5	38WN	3/8" Whiz Nut
7	12112G5B	1/2" x 1 1/2" Grade 5 Bolt
8	12-RW	1/2" Regular Washer
9	12LN	1/2" Lock Nut
10	BFSR-L	Base Fender Support Rail (left)
10	BFSR-R	Base Fender Support Rail (right)
11	38312312UB	3/8" x 3 1/2" x 3 1/2" U-Bolt
12	38-FW	3/8" Flat Washer
13	38LN	3/8" Lock Nut
14	FLB-1	Fender L-Bracket
15	381FB	3/8" x 1" Flange Bolt
16	AIS-2	Angle Iron Support

PARTS LIST

Light Kit Assembly (For Transports Equipped WITHOUT Rear Brakes)



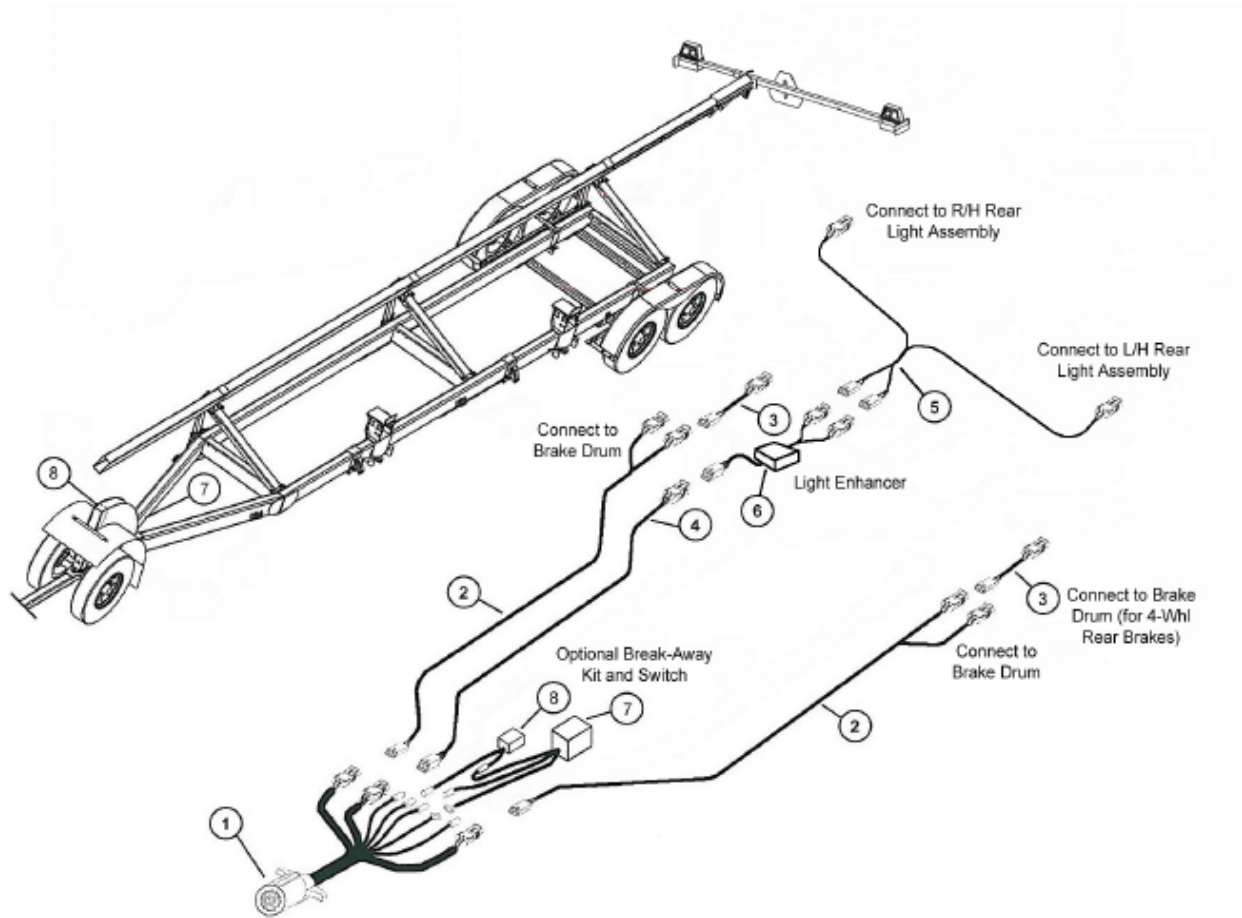
#	Part #	Description
1L	RLT-L	Light Assembly (L/H)
1R	RLT-R	Light Assembly (R/H)
2*	LWH-HHC	Light Wiring Harness (rear only)
3*	LE-1B	Light Enhancer (speaker)
4*	MWH-HHC	Main Wiring Harness with Flat Four Connector End
5	LMB-1	Light Mounting Bracket
6	TA-1	Telescoping Arm
7	HDN-12	Handle Nut
8	EB-1	Extension Bracket
9	AIS-2	Angle Iron Support
10	SMV-1	SMV Emblem
11	GR-134	Rubber Grommet (large)
12	WC-1	Wire Clip
13	RD-A1	Amber Reflective Decal
14	RD-R1	Red Reflective Decal
15	RD-O1	Orange Reflective Decal
16	141-CB	1/4" x 1" Bolt

#	Part #	Description
17	12114-G5-FB	1/2" x 1 1/4" Grade 5 Flange Bolt
18	127-HB	1/2" x 7" Hex Bolt
19	14LN	1/4" Lock Nut
20	12-FN	1/2" Flange Nut
21	12-N	1/2" Regular Nut
22	38STS	Self Tapping Screw
23	14STS	1/4" Self Tapping Screw
24	12-WR	1/2" Regular Washer
25	UBWC-2	Upper Bar Wire Cover
26	WHB-1	Wire Harness Storage Bracket
27	RCW-1	Rubber Cap for Storage Bracket
28	1434G5B	1/4" x 3/4" Grade 5 Bolt
29	OMST-1	Manual Storage Container

* **NOTE:** For Models TB-3500A and TB-6000A equipped with optional rear brakes, please see the following page for Wiring Harness changes and optional Brake-Away Kit and Switch.

PARTS LIST

Light Kit Assembly (For Transports Equipped WITH Optional Rear Brakes)



#	Part #	Description
1	MWH-HS	Main Wiring Harness with 7-Prong Connector End
2	MBH-2	Main Brake Harness (blue, white)
3	BHE-2	Brake Harness Extension (black, white) for Optional 4-wheel brakes
4	LHE-L	Light Harness Extension, Long (brown, green, yellow, white)
5	LWH-HHC	Light Wiring Harness (rear only)
6	LE-1B	Light Enhancer
7	BAW-1C	Optional Brake Away Kit (white, black, blue)
8	BAS-1	Optional Brake Away Switch with cable (black, blue)

INITIAL OPERATION / MAINTENANCE

BE CERTAIN THAT ALL POWER IS SHUT OFF BEFORE SERVICING THE HEADER TRANSPORT

Before the header transport is put into service:

- ✓ Has the Slow-Moving Vehicle Emblem been properly positioned at the rear of the header transport?
- ✓ Have all danger, warning, caution and important signs on the equipment been read and understood? If employees or others use or are near this equipment, make sure that they also have read and understood all danger, warning, caution and important signs on the equipment and have also read the operator's manual.
- ✓ Are all braces, bolts, nuts, lug bolts and lug nuts properly fastened?
- ✓ Has the header transport been properly fastened to the towing unit? Use a good quality hitch pin with clip and safety chains.
- ✓ Are the rear amber extremity lights properly positioned? Extend lights within 16" of the left and right extremities of the header.

SAFETY CHAIN USER INSTRUCTIONS

- a) Secure the safety chain by looping it around the tongue support located on the underside of the Outer Tongue. Run the chain through the intermediate support located on the underside of the inner tongue and connect to the towing machine's attaching bar.
- b) Do Not allow more slack than necessary for articulation.
- c) Do Not use any intermediate support as the attaching point.
- d) Store the safety chain by securing it around the tongue.
- e) Replace the safety chain if one or more links or end fittings are broken, stretched or otherwise damaged or deformed.



OPERATING INSTRUCTIONS/MAINTENANCE

- Adjust the brackets on the header transport to best fit your make and model header. When mounting the header, NEVER position yourself under or near the header. Securely fasten the header to the header transport.
- Do not exceed the load and size limits of the unit.
- Keep the tires properly inflated. Both under inflation and over inflation can greatly reduce tire life.
- Inspect bracing and welds periodically and repair immediately if needed. Failure to repair could cause extensive damage and greatly reduce the life of the unit.
- Repack the bearings in the hub assembly once a year or as needed. Use a good quality bearing lubricant such as Bearing Gard MK1 or equivalent.
- Grease the ball using the zerk on the front gooseneck assembly every 8 hours or as needed.
- Be sure to check the hub nuts often and keep them properly tightened.

BRAKING SYSTEM REQUIREMENTS:

Tow Loads Safely

Stopping distance increases with speed and weight of towed loads, and on slopes. Towed loads with or without brakes that are too heavy for the tractor or are towed too fast can cause loss of control. Consider the total weight of the equipment and its load.

Observe these recommended maximum road speeds, or local speed limits which may be lower:

- If towed equipment does not have brakes, do not travel more than 32 km/h (20 mph) and do not tow loads more than 1.5 times the tractor weight.
- If towed equipment does have brakes, do not travel more than 40 km/h (25 mph) and do not tow loads more than 4.5 times the tractor weight.

Ensure the load does not exceed the recommended weight ratio. Use additional caution when towing loads under adverse surface conditions, when turning, and on inclines.

SERVICE / MAINTENANCE RECORD

Date	Description	Notes