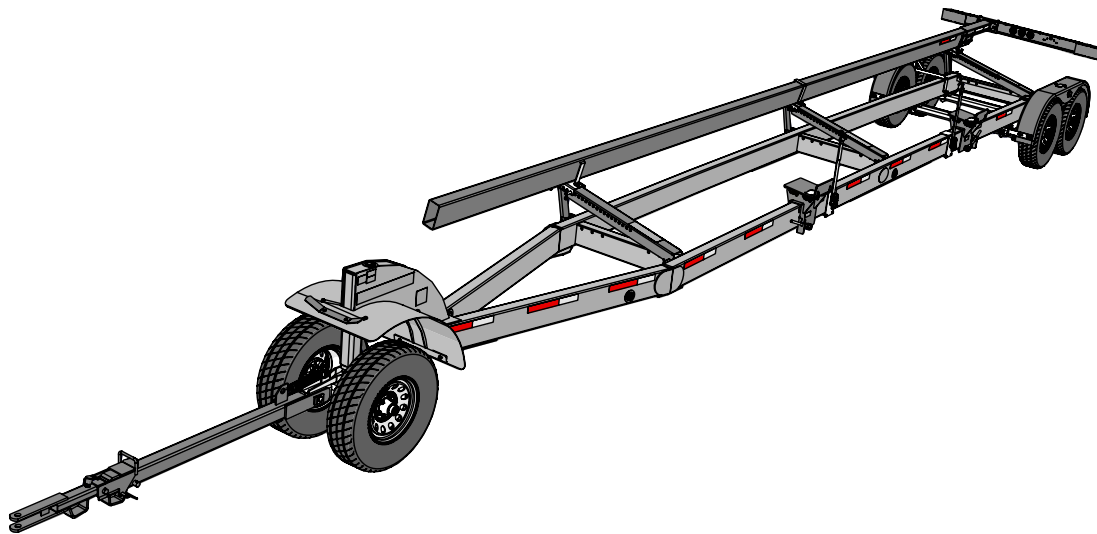




# Operator's Manual

**TRAIL-BLAZER**  
HEADER TRANSPORT



Rev. 9.9.2024

J&M Manufacturing Co, Inc

284 Railroad Street - P.O. Box 547 | Fort Recovery, OH 45846 | Ph: (419) 375-2376 | Fax: (419) 375-2708

[www.jm-inc.com](http://www.jm-inc.com)



# Table Of Contents

To the Dealer .....	4
Serial Number Location .....	5
General Information .....	5
Safety Rules .....	6
Dimensions & Specifications.....	7
Decals .....	8
Bolt Torque Specifications .....	9
Stud and Wheel Nut Torque Specifications .....	9
Operations/Maintenance.....	10
<b>Repair Parts List and Diagrams</b>	
Spare Tire Mount - 6 Lug .....	11
Standard Dolly.....	12
Torsion Dolly.....	13
TB-6000 Dolly Hubs .....	14
TB-6000 Rear Axles.....	16
Front Fender.....	18
Fender.....	19
Header Mounts and Tie-Down Assembly.....	20
Rear Upper Bar Support.....	21
Lifting Arms & Props .....	22
Upper Bar.....	23
Wire Conduit.....	23
MacDon FD2 Extensions .....	24
Upper Bar Extension and Light Bar.....	26
Lights and Wiring for Pivoting Lightbar Non-License No Brakes .....	27
Lights and Wiring for Pivoting Lightbar Non-License with Brakes .....	28
Lights and Wiring on Pivoting Lightbar - License .....	29

# To the Dealer

## TO THE DEALER

Read manual instructions and safety rules. Make sure all items on the Dealer's Pre-Delivery and Delivery Check Lists are completed before releasing equipment to the owner.

The dealer must complete the Warranty Registration found on the Dealer Portal website located at dealer.jm-inc.com and return it to J&M Mfg. Co., Inc. at the address indicated on the form. Warranty claims will be denied if the Warranty Registration has not been submitted.

### EXPRESS WARRANTY:

J&M Mfg. Co. Inc. warrants against defects in construction or materials for a period of ONE year. We reserve the right to inspect and decide whether material or construction was faulty or whether abuse or accident voids our guarantee.

Warranty service must be performed by a dealer or service center authorized by J&M Mfg. Co., Inc. to sell and/or service the type of product involved, which will use only new or remanufactured parts or components furnished by J&M Mfg. Co., Inc. Warranty service will be performed without charge to the purchaser for parts or labor based on the Warranty Labor Times schedule. Under no circumstance will allowable labor times extend beyond the maximum hours indicated in the Warranty Labor Times schedule for each warranty procedure. The purchaser will be responsible, however, for any service call and/or transportation of the product to and from the dealer or service center's place of business, for any premium charged for overtime labor requested by the purchaser, and for any service and/or maintenance not directly related to any defect covered under the warranty. Costs associated with equipment rental, product down time, or product disposal are not warrantable and will not be accepted under any circumstance.

Each warranty term begins on the date of product delivery to the purchaser. Under no circumstance will warranty be approved unless (i) the product warranty registration card has been properly completed and submitted to the equipment manufacturer, and (ii) a warranty authorization number has been issued by the equipment manufacturer. This Warranty is effective only if the warranty registration card is returned within 30 days of purchase.

This warranty does not cover a component which fails, malfunctions or is damaged as a result of (i) improper modification or repair, (ii) accident, abuse or improper use, (iii) improper or insufficient maintenance, or (iv) normal wear or tear. This warranty does not cover products that are previously owned and extends solely to the original purchaser of the product. Should the original purchaser sell or otherwise transfer this product to a third party, this warranty does not transfer to the third party purchaser in any way. J&M Mfg. Co., Inc. makes no Warranty, express or implied, with respect to tires or other parts or accessories not manufactured by J&M Mfg. Co., Inc. Warranties for these items, if any, are provided separately by their respective manufacturers.

THIS WARRANTY IS EXPRESSLY IN LIEU OF ALL OTHER WARRANTIES OR CONDITIONS, EXPRESS, IMPLIED OR STATUTORY, INCLUDING ANY IMPLIED WARRANTY OF MERCHANTABILITY OR FITNESS FOR PARTICULAR PURPOSE.

In no event shall J&M Mfg. Co., Inc. be liable for special, direct, incidental or consequential damages of any kind. The exclusive remedy under this Warranty shall be repair or replacement of the defective component at J&M Mfg. Co., Inc.'s option. This is the entire agreement between J&M Mfg. Co., Inc. and the Owner about warranty and no J&M Mfg. Co., Inc. employee or dealer is authorized to make any additional warranty on behalf of J&M Mfg. Co., Inc.

The manufacturer reserves the right to make product design and material changes at any time without notice. They shall not incur any obligation or liability to incorporate such changes and improvements in products previously sold to any customer, nor shall they be obligated or liable for the replacement of previously sold products with products or parts incorporating such changes.

### SERVICE:

The equipment you have purchased has been carefully manufactured to provide dependable and satisfactory use. Like all mechanical products, it will require cleaning and maintenance. Lubricate the unit as specified. Observe all safety information in this manual and safety signs on the equipment.

For service, your authorized J&M dealer has trained mechanics, genuine J&M service parts, and the necessary tools and equipment to handle all your needs.

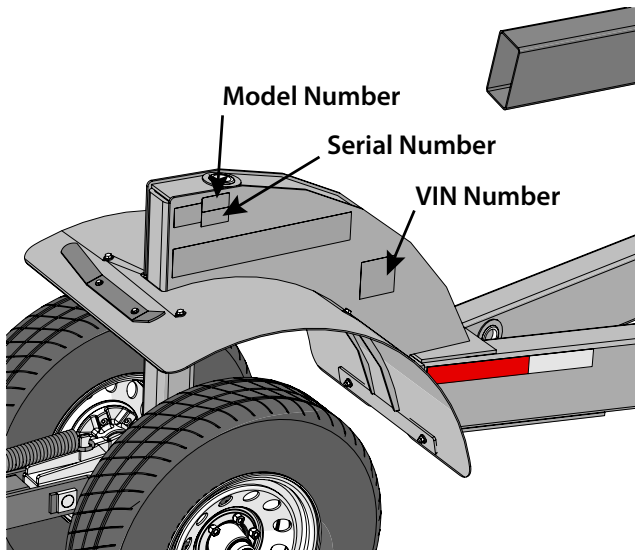
Use only genuine J&M service parts. Substitute parts may void warranty and may not meet standards required for safety and satisfactory operation. Record the model number and serial number of your equipment in the spaces provided:

**Model No:** TB-6000 **Serial No:** \_\_\_\_\_ **Date of Purchase:** \_\_\_\_\_

**Purchased From:** \_\_\_\_\_

Provide this information to your dealer to obtain correct repair parts.

# Serial Number Location



Serial Number: \_\_\_\_\_

Model Number: \_\_\_\_\_

Standard practice when ordering parts or obtaining information from your dealer requires the serial number and model number. Have numbers available before making contact.

# General Information

## TO THE OWNER:

The purpose of this manual is to assist you in operating and maintaining your header transport in a safe manner. Read it carefully. It furnishes information and instructions that will help you achieve years of dependable performance and help maintain safe operating conditions. If this machine is used by an employee or is loaned or rented, make certain that the operator(s), prior to operating:

1. Is instructed in safe and proper use.
2. Reviews and understands the manual(s) pertaining to this machine.

Throughout this manual, the term **IMPORTANT** is used to indicate that failure to observe can cause damage to equipment. The terms **CAUTION**, **WARNING** and **DANGER** are used in conjunction with the Safety-Alert Symbol, (a triangle with an exclamation mark), to indicate the degree of hazard for items of personal safety. When you see this symbol, carefully read the message that follows and be alert to the possibility of personal injury or death.



This Safety-Alert symbol indicates a hazard and means **ATTENTION! BECOME ALERT! YOUR SAFETY IS INVOLVED!**



**DANGER**

Indicates an imminently hazardous situation that, if not avoided, will result in death or serious injury.



**WARNING**

Indicates a potentially hazardous situation that, if not avoided, could result in death or serious injury, and includes hazards that are exposed when guards are removed.



**CAUTION**

Indicates a potentially hazardous situation that, if not avoided, may result in minor or moderate injury.

**IMPORTANT**

Indicates that failure to observe can cause damage to equipment.

**NOTE**

Indicates helpful information.

# Safety Rules



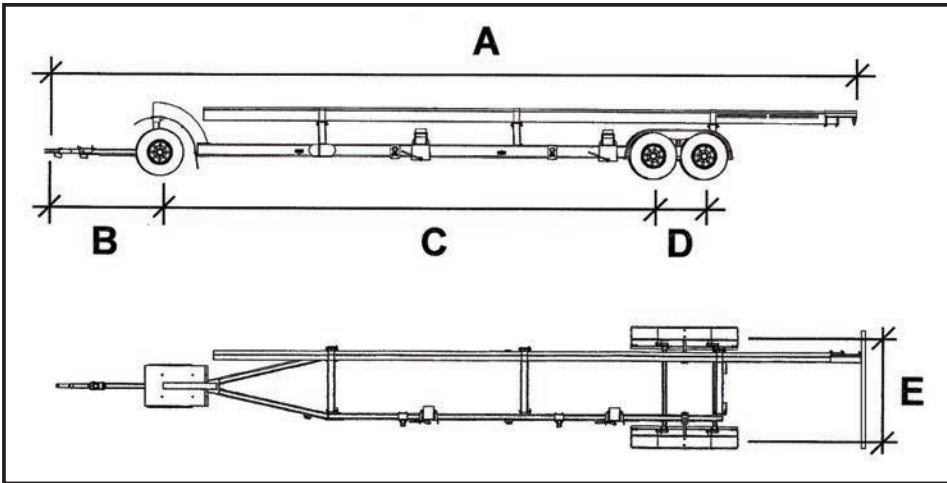
Safety is a primary concern in the design and manufacture of our products. Unfortunately, our efforts to provide safe equipment can be erased by an operator's single careless act. In addition, hazard control and accident prevention are dependent upon the awareness, concern, judgment, and proper training of personnel involved in the operation, transport, maintenance and storage of equipment.

Make certain that the operator(s), prior to operating is instructed in safe and proper use and reviews and understands the manual(s) pertaining to this machine. Also make certain that the operator(s) reviews and understands the operator's manual of the tow vehicle prior to hooking up or operating the SpeedTender.

Read this manual before you operate this machine. If you do not understand any part of this manual, or need more information, contact the J&M or your authorized dealer.

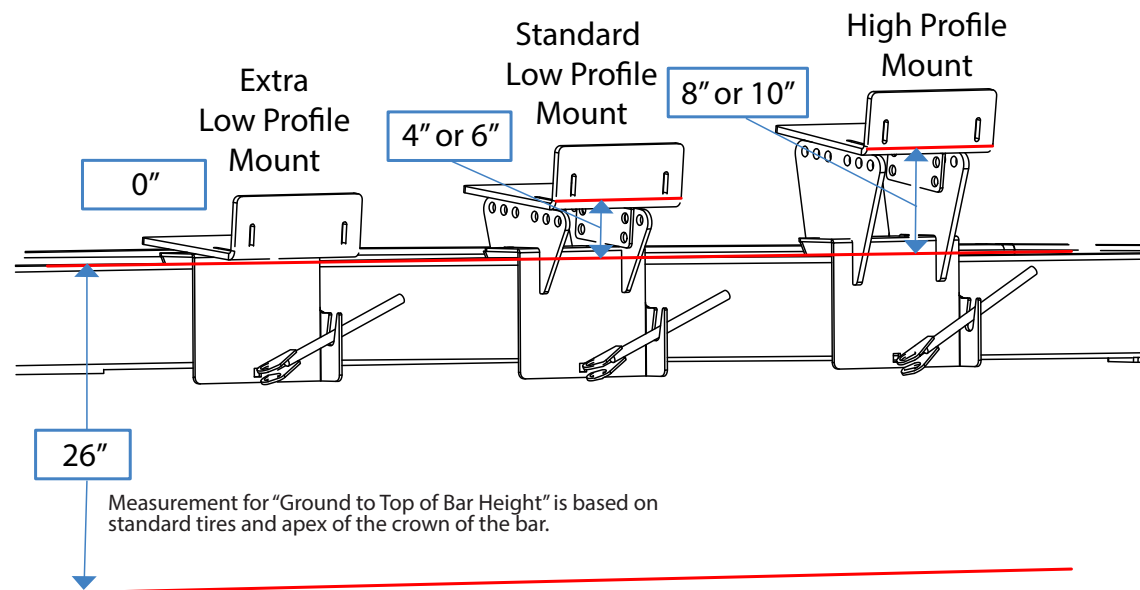
1. Understand that your safety and the safety of other persons are measured by how you service and operate this machine. Know the positions and functions of all controls before you try to operate them. Check all controls in a safe area before starting your work.
2. The safety information given in this manual does not replace safety codes, federal, state, or local laws. Ensure your machine has the proper equipment as designated by local laws and regulations.
3. A frequent cause of personal injury or death is from persons falling off equipment and being run over. Do not permit persons to ride on this machine.
4. Secure safety chain to towing vehicle before transporting. Do not transport without safety chains being attached to tow vehicle.  
**IMPORTANT: USE ONLY 2-5/16" BALL HITCH TO TRANSPORT UNIT.**
5. Use good judgment when transporting on a highway. Always maintain complete control. Regulate speed to road conditions.  
**WARNING: BE SURE ALL LIGHTS ARE WORKING PROPERLY BEFORE HIGHWAY TRAVEL.**
6. Travel speeds should be such that complete control and machine stability is maintained at all times.
7. Where possible, avoid operating near ditches, embankments and holes. Reduce speed when turning, crossing slopes and rough, slick or muddy surfaces.
8. Make sure that the header is fastened securely to the transport before moving.
9. Make sure that everyone is clear of equipment before applying power or moving the machine. NEVER position yourself under or near header when mounting on header transport.
10. Never adjust, service, clean or lubricate the header transport until all power is shut off.
11. Ensure the implement is fastened securely to the towing unit.
12. Before unhooking the implement from the towing unit, properly block the wheels to prevent the implement from moving.
13. Never overload the header transport. Overloading the header transport is dangerous and can cause extensive damage.
14. Use caution when transporting. Be alert of the transport unit's overall width when approaching obstacles, such as post signs and poles, along the road. Check the transport width of the unit to ensure clearance before entering bridges.
15. COMPLY WITH ALL SAFETY WARNINGS AND CAUTIONS IN THIS MANUAL AND IN THE COMBINE OPERATOR'S MANUAL.

# Dimensions & Specifications



	Capacity for Non-Licensing	Capacity for Licensing
TB-6000-32	20,224 lbs.	18,040 lbs.
TB-6000-38	20,134 lbs.	17,950 lbs.
TB-6000-42	20,074 lbs.	17,890 lbs.
TB-6000-48	19,864 lbs.	17,680 lbs.

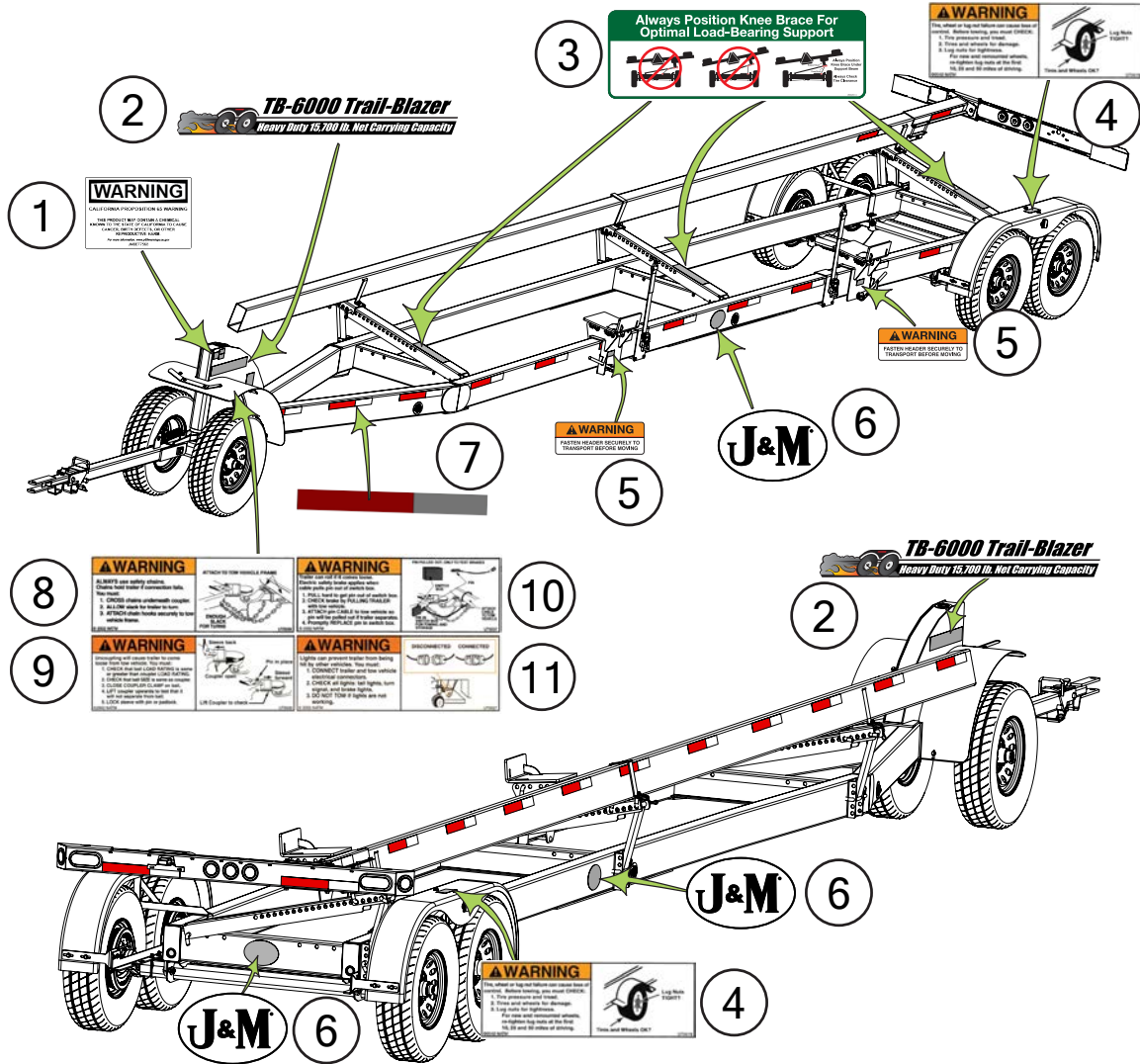
	TB-6000-32	TB-6000-38	TB-6000-42	TB-6000-48
A	45'-6"	46'-8"	53'-9"	59'-9"
B	6'-0"			
C	32'-9"			
D	2'-10"			
E	6'-0"			
Weight	3800 lbs.	3,890 lbs.	3,950 lbs.	4,160 lbs.
Spindle Size Front	(2) 2-1/4" Diameter			
Spindle Size Back	(4) 2-1/2" Diameter			
Wheel Size	16" x 6" - 6 Bolt			
Tire Size	235/85R16E			
Steel Upper Bar	4" x 8"			
Upper Bar Length	32'	38'	42'	48'
Arched Main Frame	4" x 8" 1/4" Tubing			



# Decals

**⚠ ATTENTION! BECOME ALERT! YOUR SAFETY IS INVOLVED! ⚠**

Replace Immediately If Damaged or Missing



License option setup shown

Description	Part No.
1 California Proposition 65 Warning Decal	JM0077568
2 TB-6000 Decal	JM0040063
3 HT - Knee Brace Set Up Decal	JM0026114
4 Warning, Tire Wheel or Lug Nut Failure Decal	JM0014996
5 Warning - Fasten Header Securely To Transport Before Moving Decal	JM0039381
6 J&M Oval Decal (Medium) 5-1/2" x 8-1/2"	JM0010179
7 2" x 18" Red and White Reflective Strip	JM0015079
8 Warning, Always Use Safety Chains Decal	JM0014995
9 Warning, Uncoupling Will Cause Trailer Decal	JM0058889
10 Warning, Trailer Can Roll Decal	JM0014997
11 Warning, Lights Can Prevent Decal	JM0058890



# Bolt Torque Specifications

Always tighten hardware to these values unless a different torque or tightening procedure is listed for specific application. Fasteners must always be replaced with the same grade as specified in the manual parts list. Always use the proper tool for tightening hardware. Make sure fastener threads are clean and you start thread engagement properly. **Use these values when tightening all bolts and nuts with the exception of wheel nuts.**

## SAE Fasteners

Coarse Thread Series				
Diameter and Pitch (Inches)	Grade 5		Grade 8	
	Dry	Oiled	Dry	Oiled
1/4"-20	8 ft-lbs	6 ft-lbs	12 ft-lbs	9 ft-lbs
5/16"-18	17	13	25	18
3/8"-16	31	23	44	33
7/16"-14	49	37	70	52
1/2"-13	75	57	106	80
9/16"-12	109	82	154	115
5/8"-11	150	113	212	159
3/4"-10	267	200	376	282
7/8"-9	429	322	606	455
1"-8	644	483	909	681
Fine Thread Series				
Diameter and Pitch (Inches)	Grade 5		Grade 8	
	Dry	Oiled	Dry	Oiled
1/4"-28	10 ft-lbs	7 ft-lbs	14 ft-lbs	10 ft-lbs
5/16"-24	19	15	27	20
3/8"-24	35	26	49	37
7/16"-20	55	41	78	58
1/2"-20	85	64	120	90
9/16"-18	121	91	171	128
5/8"-18	170	127	240	180
3/4"-16	297	223	420	315
7/8"-14	474	355	669	502

## Stud and Wheel Nut Torque Specifications

Always tighten hardware to these values unless a different torque or tightening procedure is listed for specific application. Fasteners must always be replaced with the same grade as specified in the manual parts list. Always use the proper tool for tightening hardware. Make sure fastener threads are clean and you start thread engagement properly. **Use these values when tightening all studs and wheel nuts.**

Stud	Tightening Torque
1/2"-20	120 ft-lbs
9/16"-18	170 ft-lbs
5/8"-18	350 ft-lbs
3/4"-16	400 ft-lbs
20mm	475 ft-lbs
22mm	640 ft-lbs

**TIGHTENING WHEEL NUTS:** Torque 9/16"-18 lug nuts on wheels to 170 ft-lbs during initial operation of the header wagon. Check for proper torque after every 10 hours of use. Failure to do so may damage wheel nut seats. Once seats are damaged it will become impossible to keep nuts tight.

# Operations/Maintenance


 **DANGER: BE CERTAIN THAT ALL POWER IS SHUT OFF BEFORE SERVICING THE HEADER TRANSPORT.**

## ***Before the Header Transport is Put into Service:***

- Has the Slow-Moving Vehicle sign been properly positioned at the rear of the header transport?
- Have all danger, warning, caution and important signs on the equipment been read and understood? If employees or others use or are near this equipment, make sure that they also have read and understood all danger, warning, caution and important signs on the equipment and have also read the operator's manual.
- Are all braces, bolts, nuts, studs and lug nuts properly fastened?
- Has the header transport been properly fastened to the towing unit? Use a good quality hitch pin with clip and safety chains.

## ***Safety Chain User Instructions***

- Secure the safety chain by looping it around the tongue support located on the underside of the hitch tongue and connect to the towing machine's attaching bar.
- Do not allow more slack than necessary for articulation.
- Do not use an intermediate support as the attaching point.
- Store the safety chain by securing it around the tongue.
- Replace the safety chain if one or more links or end fittings are broken, stretched or otherwise damaged or deformed.

 **WARNING: Check safety chains for broken, stretched or damaged link or end fittings. Replace chains if found to be damaged. Do not weld safety chains.**

## ***Operating Instructions/Maintenance***

- Adjust the brackets on the header transport to best fit your make and model header.  
**Note: When mounting the header, NEVER position yourself under or near the header. Securely fasten the header to the header transport.**
- Do not exceed the load and size limits of the unit.
- Keep the tires properly inflated. Both under inflation and over inflation can greatly reduce tire life. Inflate 235-85 R16 tires to 80 psi.
- Inspect bracing and welds periodically and repair immediately, if needed. Failure to repair could cause extensive damage and greatly reduce the life of the unit.
- Repack the bearings in the hub assembly once a year or as needed. Use a good quality LS EP2 severe duty, high shock load, lithium-based grease.
- Grease the ball or king pin using the zerk on the front gooseneck assembly every 8 hours or as needed.
- Check the wheel nuts often and keep them properly tightened.

## ***Braking System Requirements***

- Stopping distance increases with speed and weight of towed loads and on slopes. Towed loads with or without brakes that are too heavy for the towing unit or are towed too fast can cause loss of control. Consider the total weight of the equipment and its load.  
**Note: Observe these recommended maximum road speeds, or local speed limits which may be lower.**
- If towed equipment does not have brakes, do not travel more than 20 mph (32 km/h) and do not tow loads more than 1.5 times the tractor weight.
- If towed equipment does have brakes, do not travel more than 25 mph (40 km/h) and do not tow loads more than 4.5 times the tractor weight.
- If towed equipment does have a Licensing Package, follow state and local speed limit laws and do not tow loads more than 4.5 times the towing units weight.
- Ensure the load does not exceed the recommended weight ratio. Use additional caution when towing loads under adverse surface conditions, when turning, and on inclines.

 **DANGER: Tow loads safely.**

# Repair Parts List and Diagrams

When performing maintenance work, wear sturdy, rough-soled work shoes and protective equipment for eyes, hair, hands, hearing and head. Follow the Operator's Manual instructions to ensure safe and proper maintenance and repair.

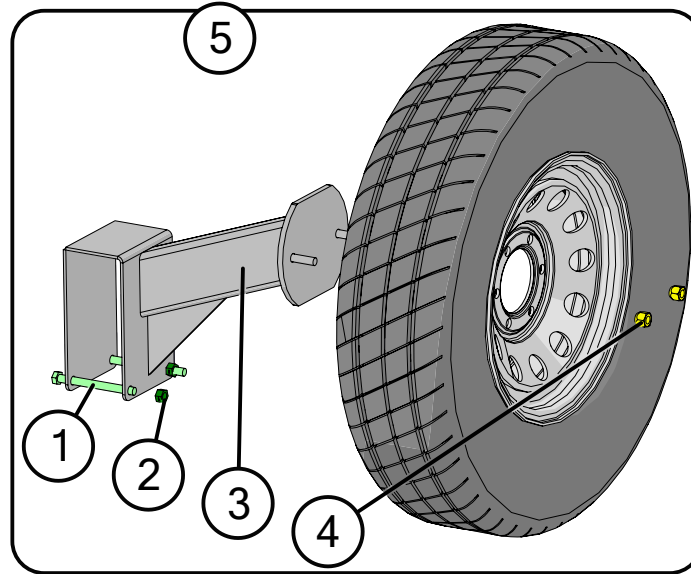
Your local, authorized dealer can supply genuine replacement parts. Substitute parts may not meet original equipment specifications and may be dangerous.

 **WARNING**

**MAKE SURE ALL POWER IS SHUT OFF BEFORE PERFORMING ANY MAINTENANCE OR REPAIR WORK.**

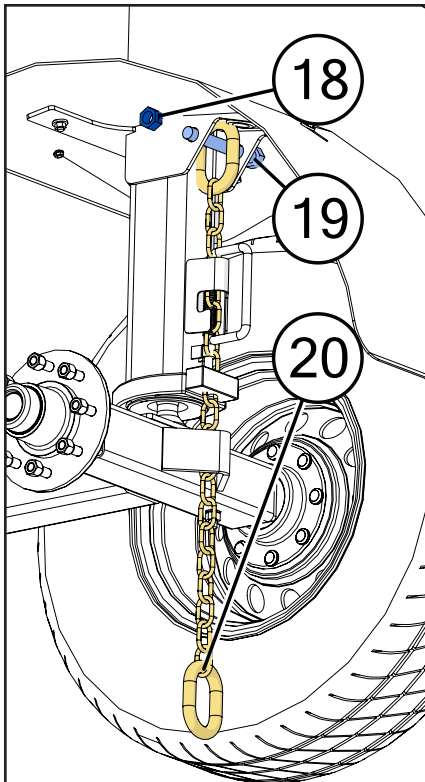
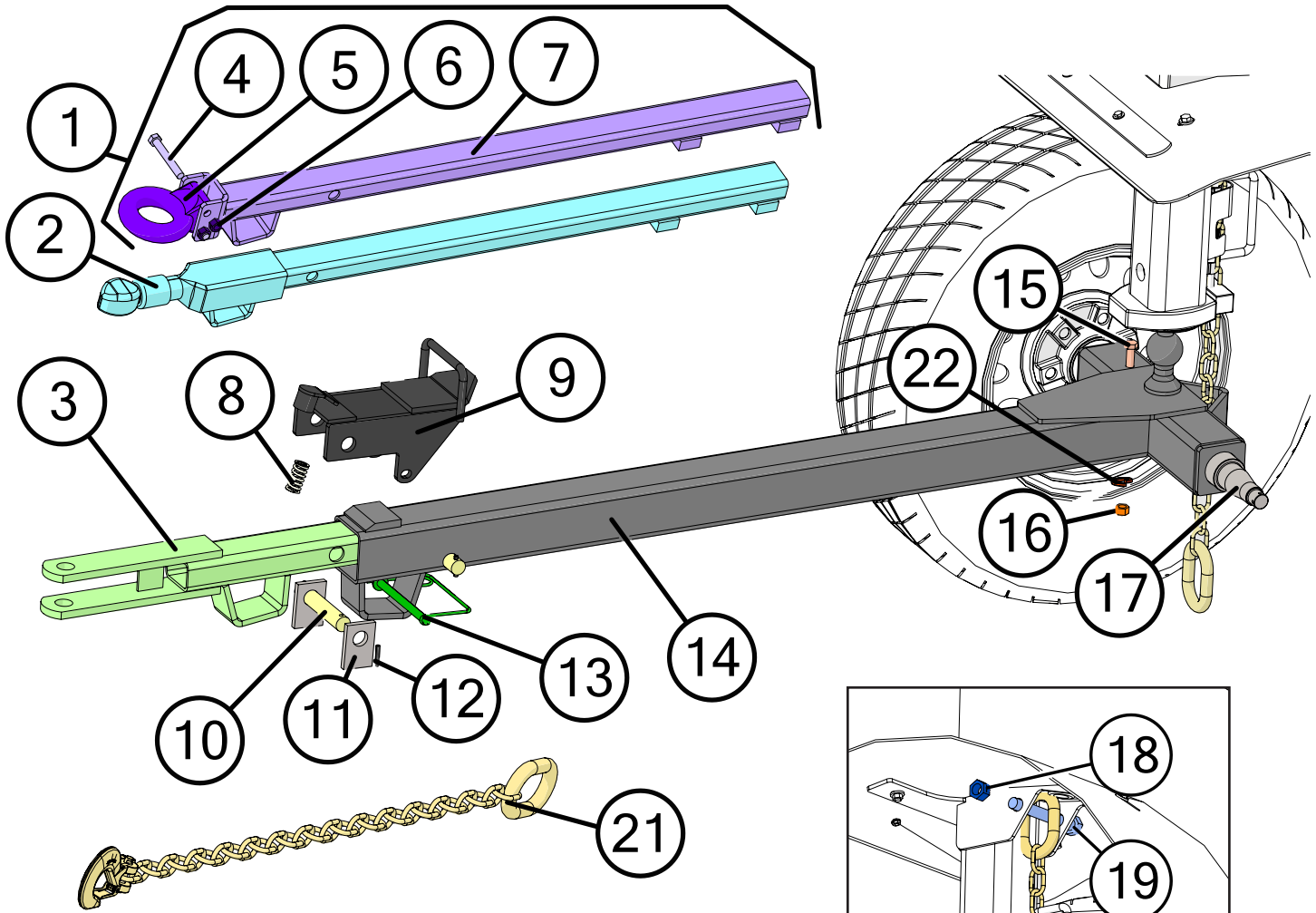


# Spare Tire Mount - 6 Lug



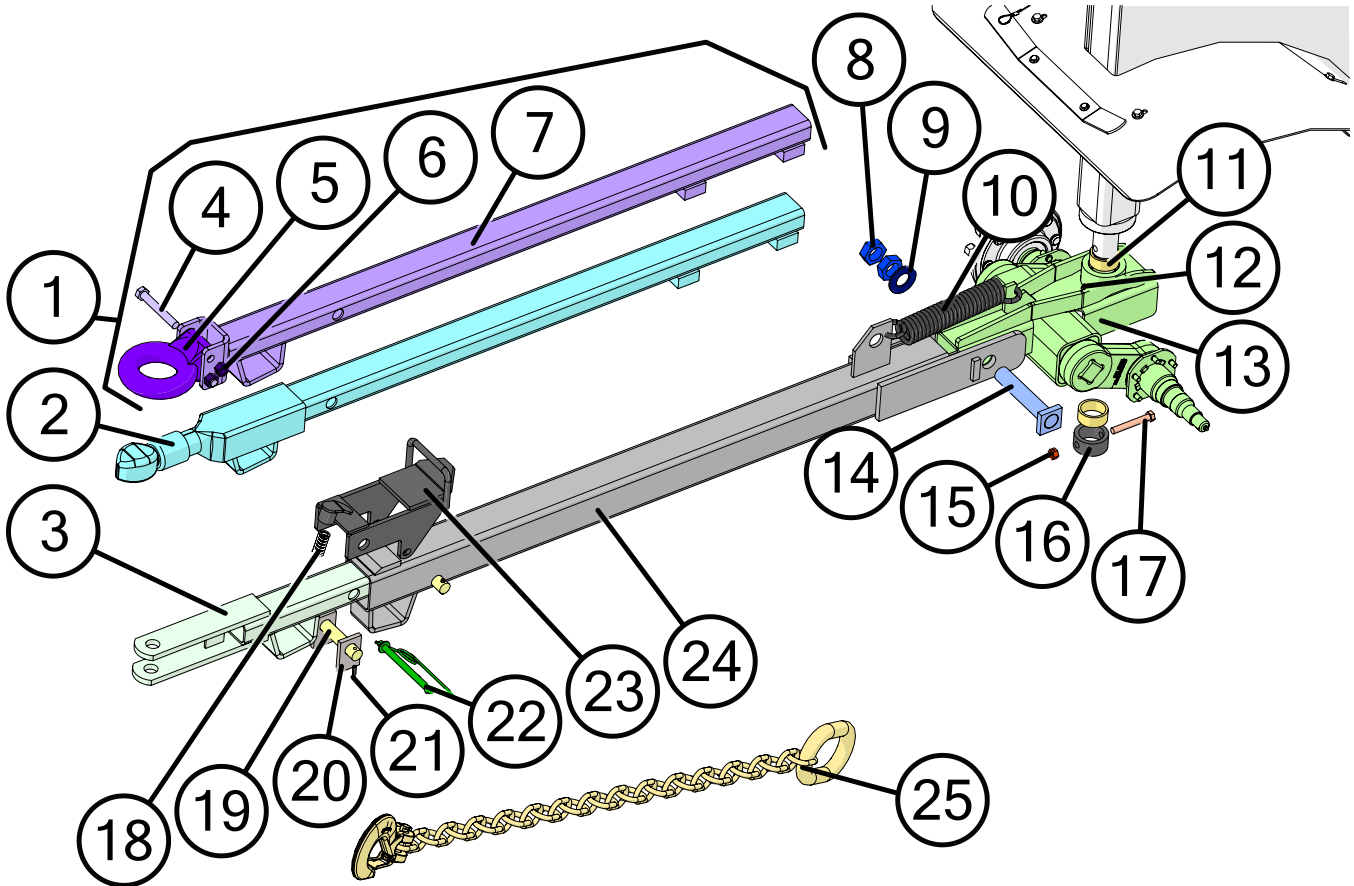
	Description	Part No.
1	1/2"-13 x 5-1/2" Gr5 Z Hex Bolt	JM0001498
2	1/2"-13 Gr2 Z Centerlock Hex Nut	JM0001511
3	6 Lug TB Spare Tire Main Weldment	JM0058505
4	1/2"-20 Lug Nut, 6-8 Ton (5552)	JM0003062
5	6 Lug Trailblazer Spare Tire Assembly	JM0058510

# Standard Dolly



Description	Part No.
1 Trail-Blazer Inner Tongue Pintle Hitch Assembly	JM0075569
2 Torsion Flex Trail-Blazer Inner Tongue Ball Hitch	JM0028697
3 Torsion Flex Trail-Blazer Inner Tongue Clevis	JM0030636
4 5/8"-11 x 4-1/2" Gr8 YZ Hex Bolt	JM0075570
5 Lunette Eye (30,000# 3" Forged Eye)	JM0015884
6 5/8"-11 Gr2 Z Centerlock Hex Nut	JM0002146
7 Trail-Blazer Inner Tongue Pintle Hitch Weldment	JM0075567
8 Compression Spring (1" x 1-3/4") for Door Assembly & Tongue Latch	JM0001688
9 Flapper Weldment (10T)	JM0030414
10 1" x 5-3/4" Flapper Pivot Shaft (LS-610)	JM0027732
11 Spacer Blocks, 2-1/2", 6-15 Ton (SB-212)	JM0003032
12 1/4" x 1-3/8" Roll Pin	JM0009896
13 1/2" x 7" Lynch Pin	JM0030476
14 Trail-Blazer - Outer Hitch Tongue Weldment	JM0077195
15 1/2"-13 x 4-1/2" Gr5 Z Hex Bolt	JM0008548
16 1/2"-13 Gr2 Z Hex Nut	JM0002124
17 2-1/4" Double Ended Spindle - Trail-Blazer Dolly	JM0030465
18 3/4"-10 Gr2 Z Centerlock Hex Nut	JM0002147
19 3/4"-10 x 6" Gr8 Z Hex Bolt	JM0037185
20 Safety Chain 34" (12,600 lb)	JM0078441
21 7mm P-7 49" O.A.L. 12,600# Safety Chain	JM0078442
22 1/2" Split Lock Washer	JM0016059

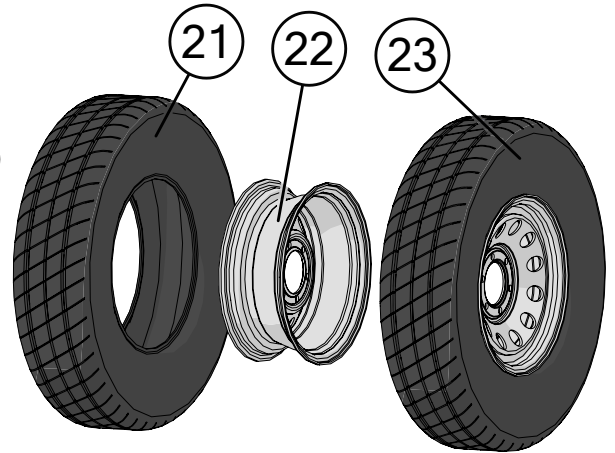
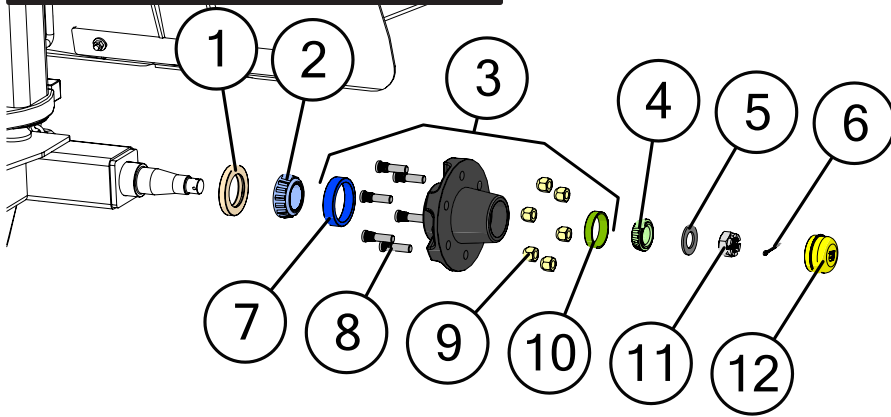
# Torsion Dolly



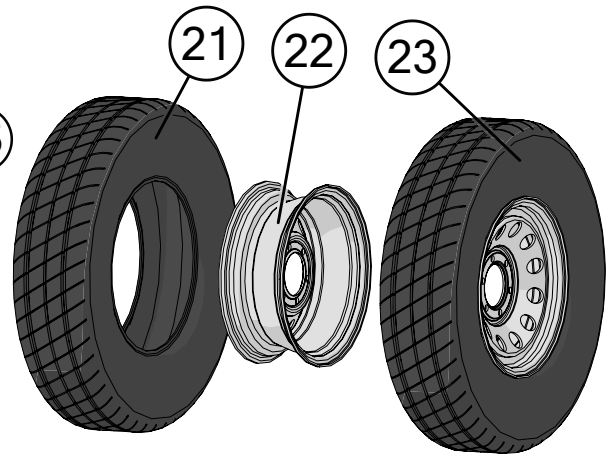
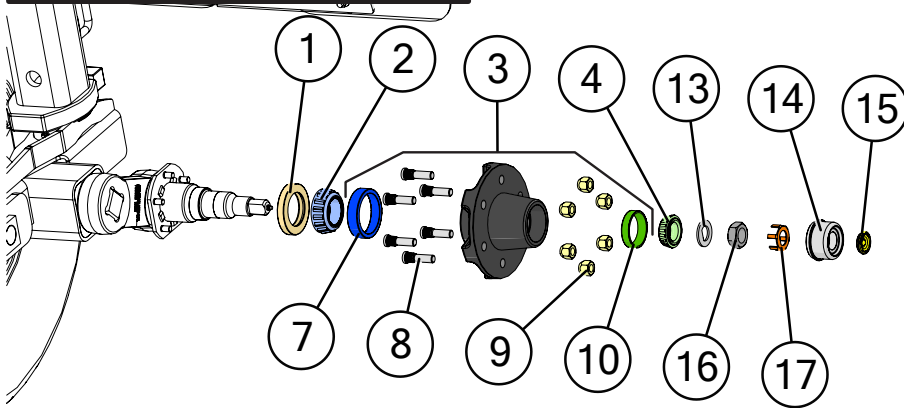
Description	Part No.
1 Trail-Blazer Inner Tongue Pintle Hitch Assembly	JM0075569
2 Torsion Flex Trail-Blazer Inner Tongue Ball Hitch	JM0028697
3 Torsion Flex Trail-Blazer Inner Tongue Clevis	JM0030636
4 5/8"-11 x 4-1/2" Gr8 YZ Hex Bolt	JM0075570
5 Lunette Eye (30,000# 3" Forged Eye)	JM0015884
6 5/8"-11 Gr2 Z Centerlock Hex Nut	JM0002146
7 Trail-Blazer Inner Tongue Pintle Hitch Weldment	JM0075567
8 1-1/4"-12 PN Gr2 Hex Jam Nut	JM0001606
9 1-1/4" ID x 2-1/2" OD x 1/8" Z Flat Washer	JM0020322
10 Large Tongue Spring 3/8" x 1-3/4" x 12-1/2" (GDP) TS-615H	JM0014200
11 2" ID x 2-3/8" OD x 1" LG Bronze Bushing (EB-2)	JM0027653
12 1/8" NPT Male x 11/16" Straight Grease Fitting	JM0009756
13 Trail-Blazer Front Torsion Axle Fixed Spool with Bushings, Grease Zerk	JM0060638
14 6-1/2" x 1-1/4" King Pin Weldment (TB-1082)	JM0003036
15 1/2"-13 Gr2 Z Centerlock Hex Nut	JM0001511
16 Trail-Blazer Kingpin Locking Ring (2-3/4" O.D)	JM0068859
17 1/2"-13 x 3-1/2" Gr5 Z Hex Bolt	JM0009914
18 Compression Spring (1" x 1-3/4") for Door Assembly & Tongue Latch	JM0001688
19 1" x 5-3/4" Flapper Pivot Shaft (LS-610)	JM0027732
20 Spacer Blocks, 2-1/2", 6-15 Ton (SB-212)	JM0003032
21 1/4" x 1-3/8" Roll Pin	JM0009896
22 1/2" x 7" Lynch Pin	JM0030476
23 Flapper Weldment (10T)	JM0030414
24 Trail-Blazer - Outer Hitch Tongue Weldment (62-3/4" OAL)	JM0061239
25 7mm P-7 49" O.A.L. 12,600# Safety Chain	JM0078442

# TB-6000 Dolly Hubs

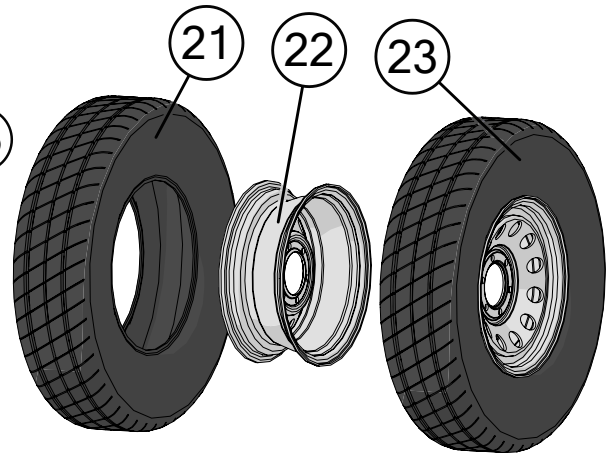
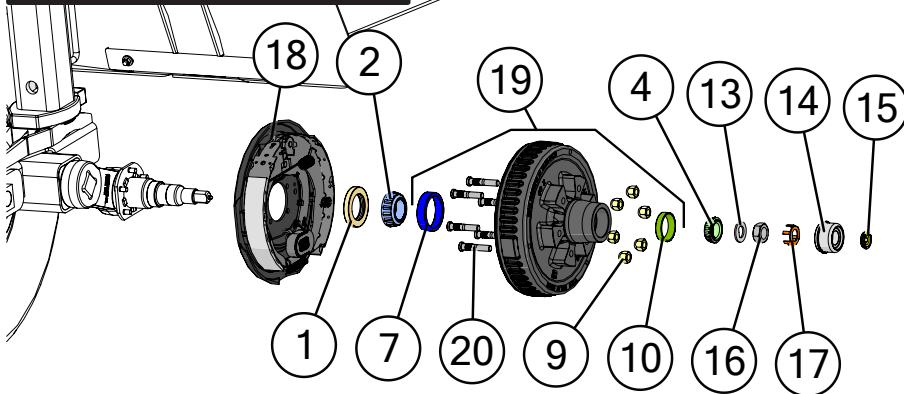
## Standard Dolly - No Brakes



## Torsion Dolly - No Brakes



## Torsion Dolly - Brakes

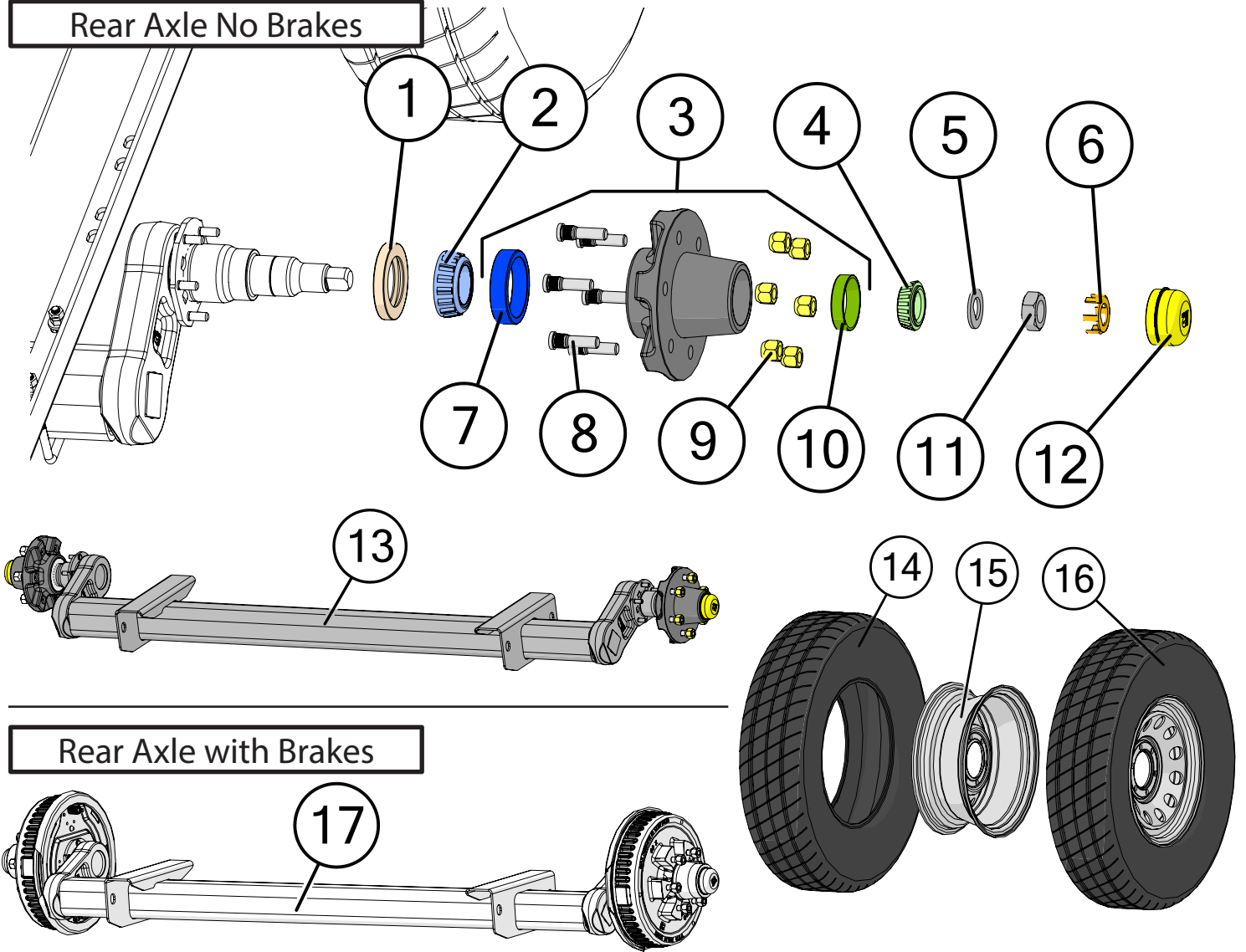


# TB-6000 Dolly Hubs

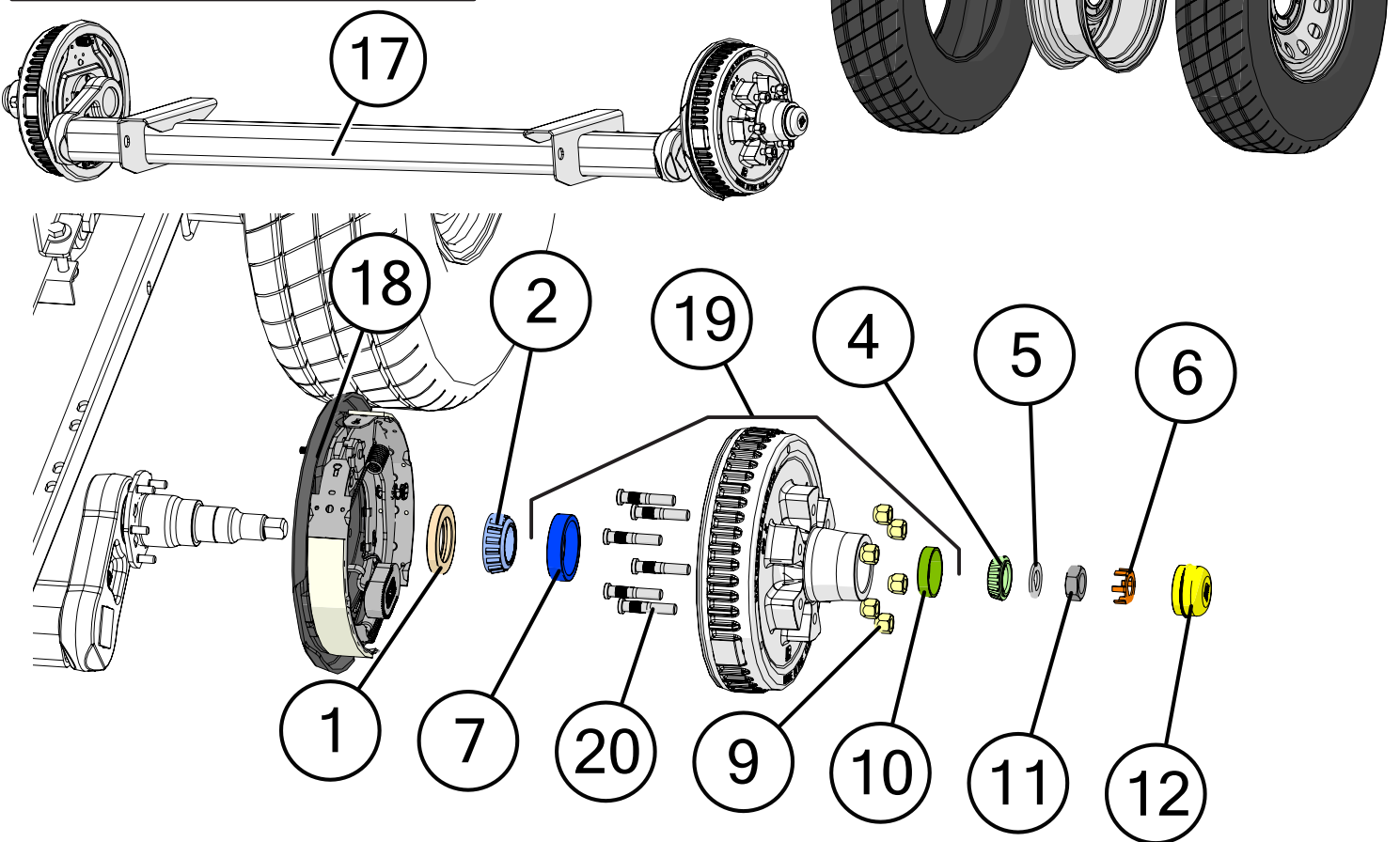
	Description	Part No.
1	2-1/4" ID Grease Seal (010-036-00)	JM0035951
2	Tapered Bearing Cone 25580, 12 Ton	JM0018104
3	6k Non-Brake Hub with Inner Outer Races, Studs, and Lug Nuts	JM0082504
4	Bearing Cone (15123)	JM0019551
5	Spindle Washer (1-1/8" ID, 1-5/8" OD, 1/8") (7k Lb Axle)	JM0039543
6	Cotter Pin 1/8" x 1-3/4"	JM0039545
7	Cup, Large Inner, 12 Ton, 25520	JM0018102
8	1/2"-20 x 1.84" Press-In Stud	JM0082456
9	1/2"-20 Lug Nut, 6-8 Ton (5552)	JM0003062
10	Race, Outer 15245 (5.2k axle)	JM0019548
11	1"-14 Castle Nut	JM0035956
12	021-001-00, Grease Cap	JM0082423
13	D Washer (1" ID)	JM0039578
14	Dust Cap for EZ Grease (5,200lb)	JM0039577
15	E-Z Lube Rubber Plug 085-001-00	JM0035958
16	Special 1" Jam Nut for 5.2k, 7k Axles	JM0035955
17	Spring Steel Retaining Clip (7k)	JM0051458
18	7K Brake Drum Assembly Right Hand	JM0035974
18	7K Brake Drum Assembly Left Hand	JM0035973
19	6k Brake Hub with Inner Outer Races, Studs, and Lug Nuts	JM0082507
20	1/2"-20 x 2-13/20" Stud	JM0039598
21	235-85-R16 Load Range E Tire	JM0003232
22	Wheel Rim, 6 Hole, 16" x 6" (16x6-6)	JM0030432
23	Wheel & Tire 235-85-R16 Load Range E - 6 Bolt	JM0030433

# TB-6000 Rear Axles

## Rear Axle No Brakes



## Rear Axle with Brakes

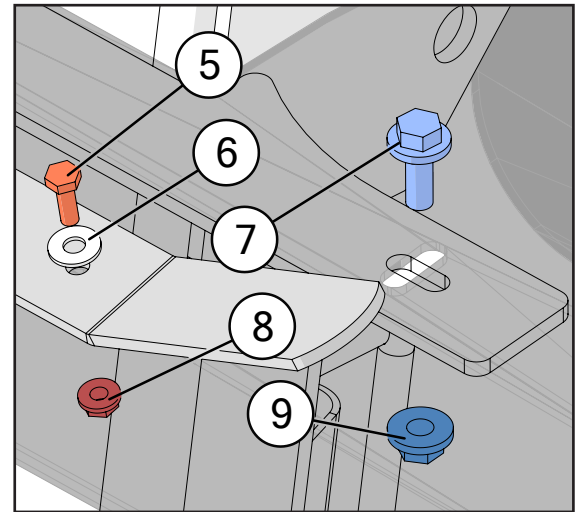
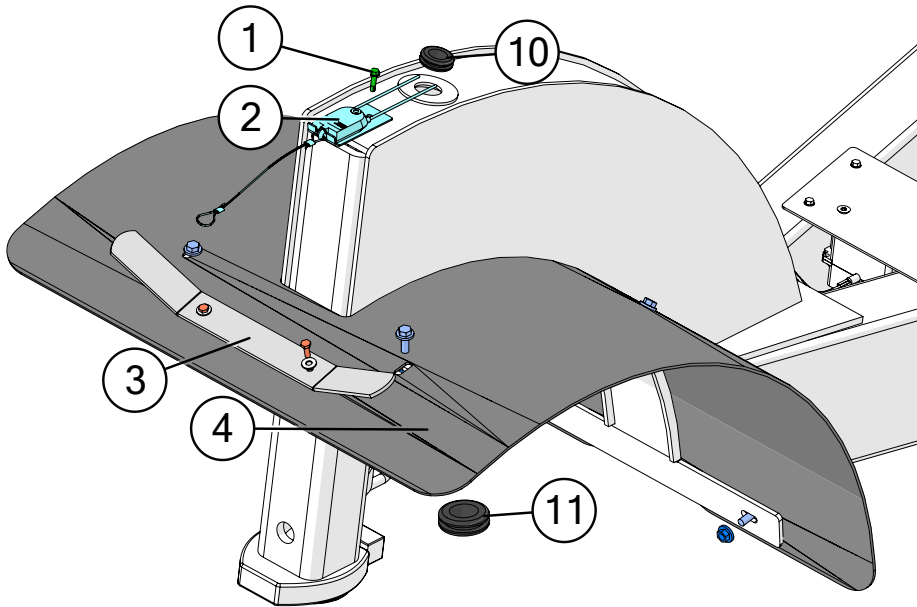




# TB-6000 Rear Axles

	Description	Part No.
1	2-1/4" ID Grease Seal (010-036-00)	JM0035951
2	Tapered Bearing Cone 25580, 12 Ton	JM0018104
3	6k Non-Brake Hub with Inner Outer Races, Studs, and Lug Nuts	JM0082504
4	Bearing Cone (15123)	JM0019551
5	D Washer (1" ID)	JM0039578
6	Spring Steel Retaining Clip (7k)	JM0051458
7	Cup, Large Inner, 12 Ton, 25520	JM0018102
8	1/2"-20 x 1.84" Press-In Stud	JM0082456
9	1/2"-20 Lug Nut, 6-8 Ton (5552)	JM0003062
10	Race, Outer 15245 (5.2k axle)	JM0019548
11	Special 1" Jam Nut for 5.2k, 7k Axles	JM0035955
12	021-001-00, Grease Cap	JM0082423
13	6k Axle without Brakes	JM0077771
14	235-85-R16 Load Range E Tire	JM0003232
15	Wheel Rim, 6 Hole, 16" x 6" (16x6-6)	JM0030432
16	Wheel & Tire 235-85-R16 Load Range E - 6 Bolt	JM0030433
17	6k Axle with Brakes	JM0077773
18	12" x 2" LH Electric Nev-R-Adjust 6,000 lbs	JM0060760
18	12" x 2" RH Electric Nev-R-Adjust 6,000 lbs	JM0060770
19	6k Brake Hub with Inner Outer Races, Studs, and Lug Nuts	JM0082507
20	1/2"-20 x 2-13/20" Stud	JM0039598

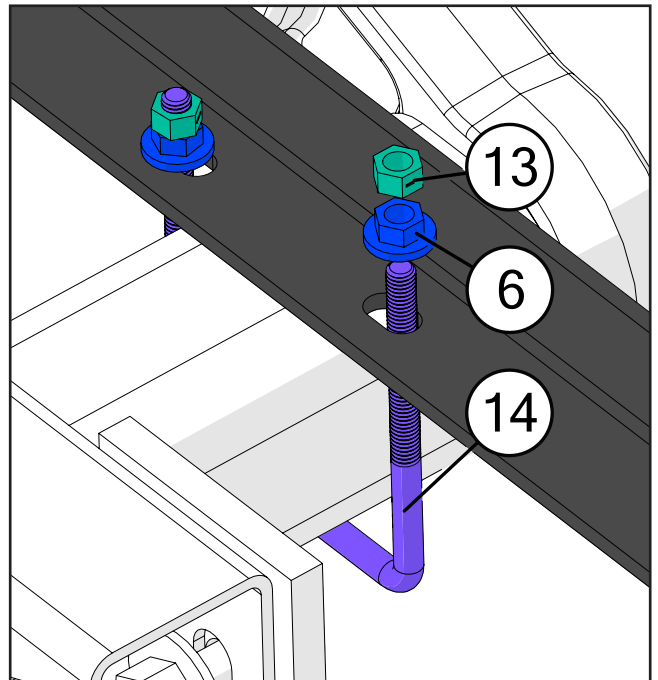
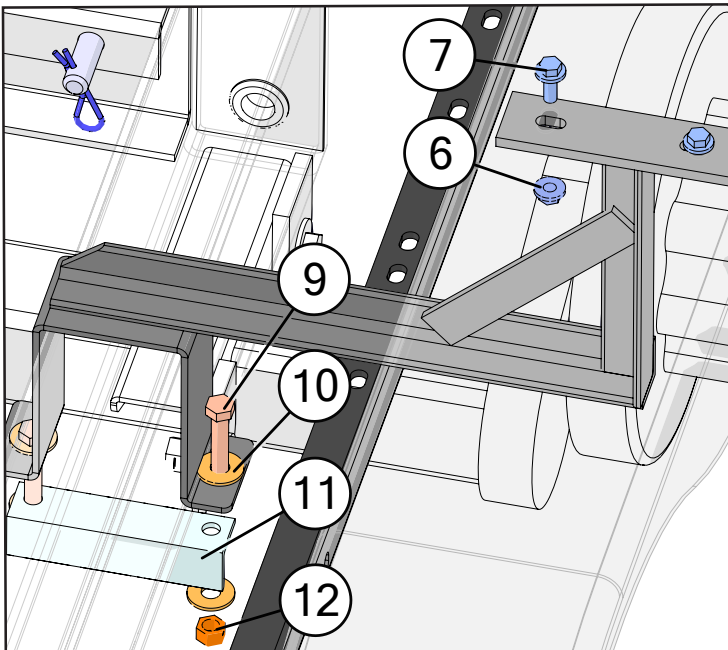
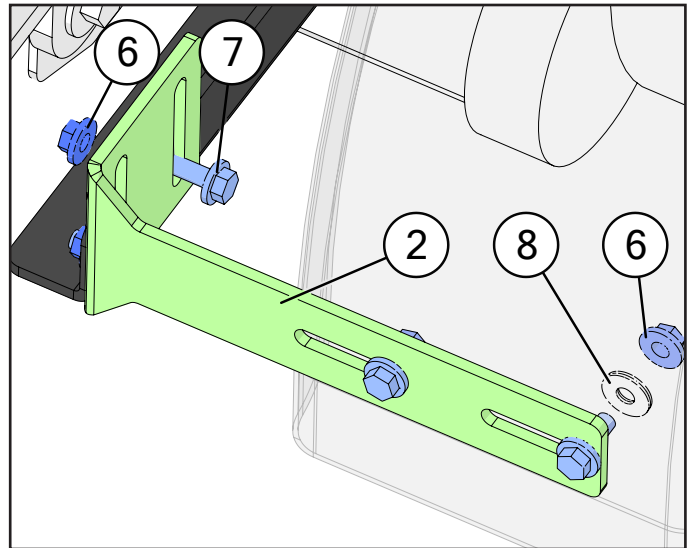
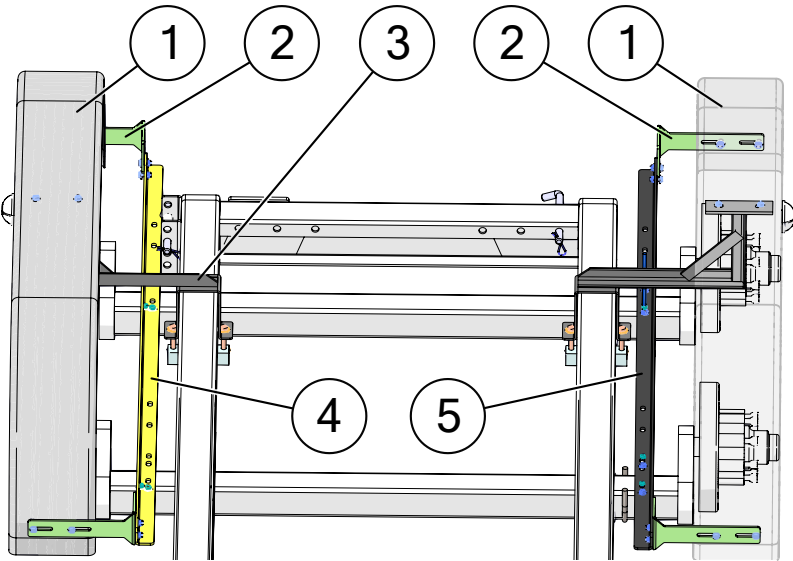
# Front Fender



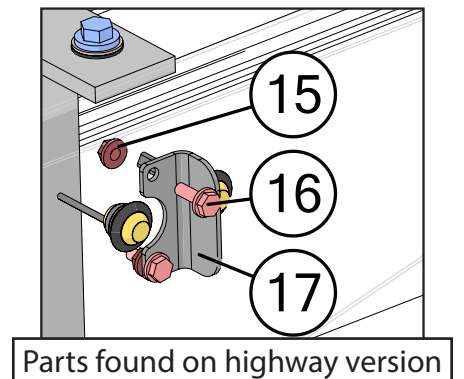
Parts 1&2 are only used with brake axles.

Description	Part No.
1 1/4" x 1" Self Tapping Screw	JM0001716
2 Breakaway Switch with Cable (BAS-1)	JM0001843
3 Wire Harness Storage Bracket (WHB-1)	JM0001438
4 Trail-Blazer Front Fender	JM0010085
5 1/4"-20 x 3/4" Gr5 Z Hex Bolt	JM0001507
6 1/4" ID, 3/4" OD Z Flat Washer	JM0003090
7 3/8"-16 x 1" Gr5 Z SF Hex Bolt	JM0002092
8 1/4"-20 Gr5 Z SF Hex Nut	JM0001630
9 3/8"-16 Gr5 Z SF Hex Nut	JM0002152
10 Rubber Grommet (1" ID, 1 3/4" OD, 3/16" gap) (134GR)	JM0001477
11 1" ID x 3/16" GW x 1-3/8" GD Grommet	JM0016784

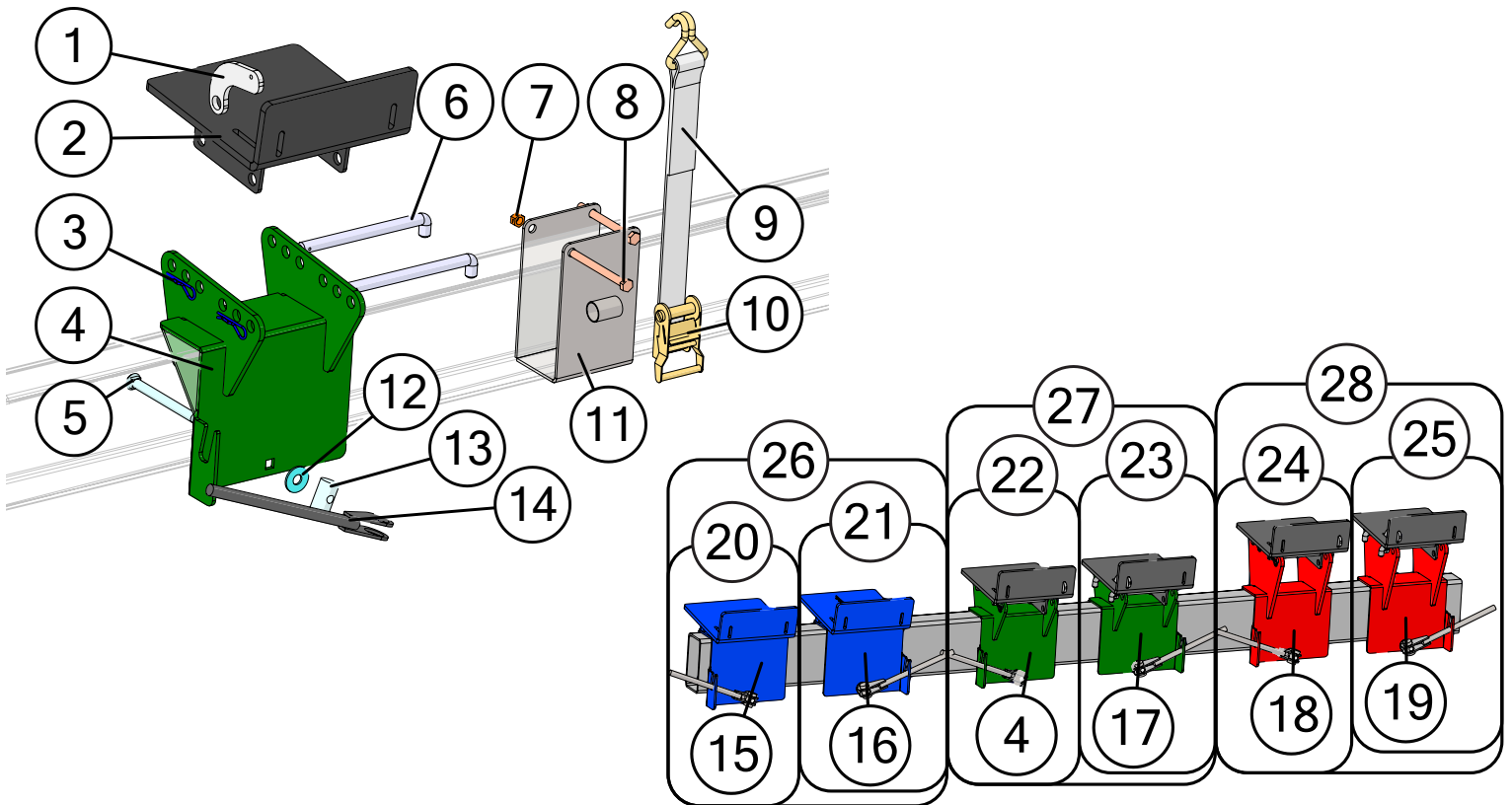
# Fender



	Description	Part No.
1	2-Wheel Fender (72-1/2" Length) (WF-1)	JM0030412
2	High Speed Header Transport Fender Bracket	JM0018610
3	Trail-Blazer Center Fender Support Bracket Weldment (FSA-2-16)	JM0030407
4	72" Fender Bar Right	JM0017948
5	72" Fender Bar Left	JM0017924
6	3/8"-16 Gr5 Z SF Hex Nut	JM0002152
7	3/8"-16 x 1" Gr5 Z SF Hex Bolt	JM0002092
8	3/8" Rubber/Metal Flat Washer	JM0030416
9	1/2"-13 x 3-1/2" Gr5 Z Hex Bolt	JM0009914
10	1/2" ID, 1-3/8" OD Z Flat Washer	JM0003082
11	Header Transport Light Bar Angle Iron Support (AIS-2)	JM0001440
12	1/2"-13 Gr2 Z Centerlock Hex Nut	JM0001511
13	3/8"-16 Gr2 Z Centerlock Hex Nut	JM0001512
14	3/8"-16 x 4" Inside Width x 5" Length Square U-Bolt	JM0080422
15	1/4"-20 Gr5 Z SF Hex Nut	JM0001630
16	1/4"-20 x 3/4" Gr5 Z SF Hex Bolt	JM0001642
17	Trail-Blazer Highway Side Marker Light Divider	JM0078465

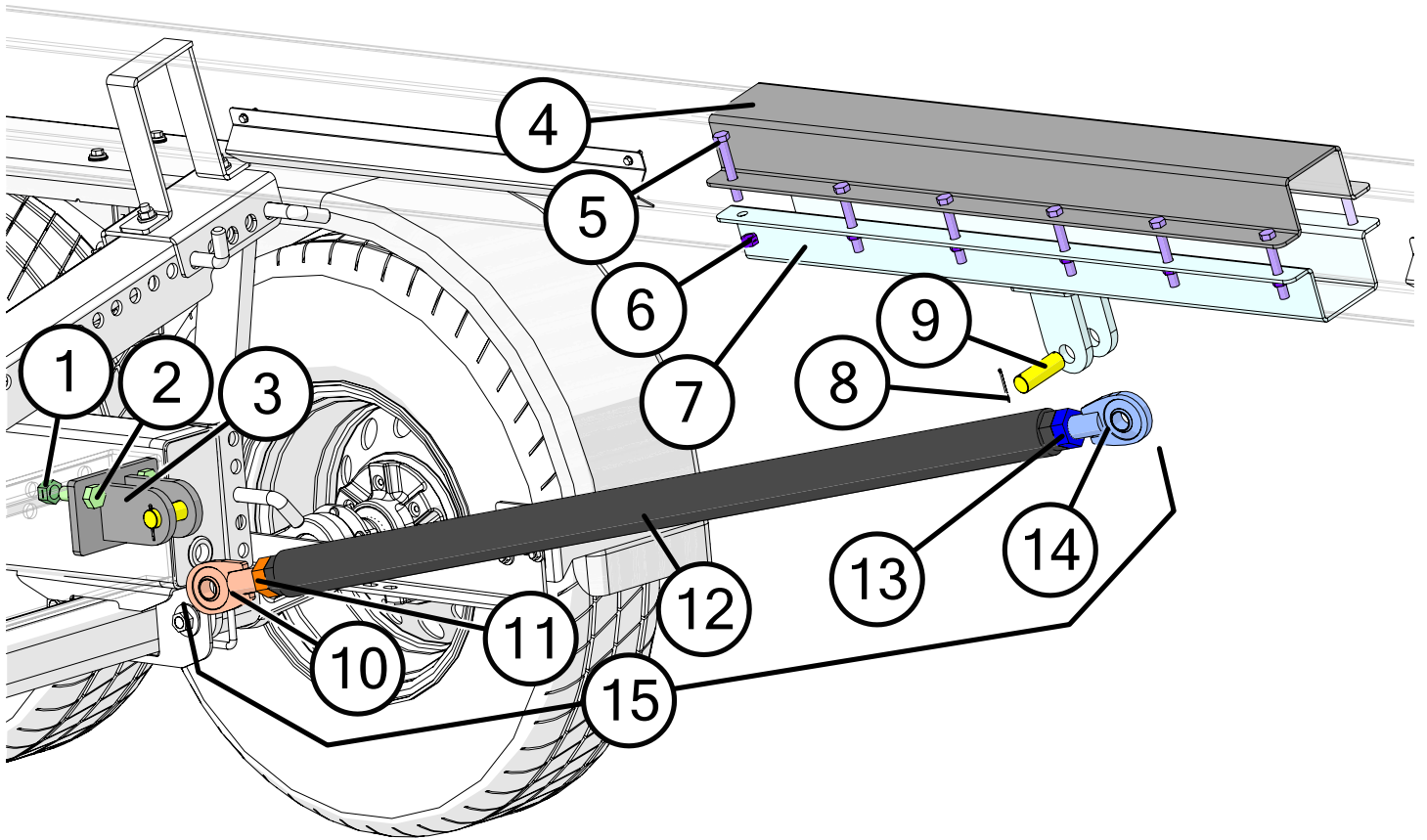


# Header Mounts and Tie-Down Assembly



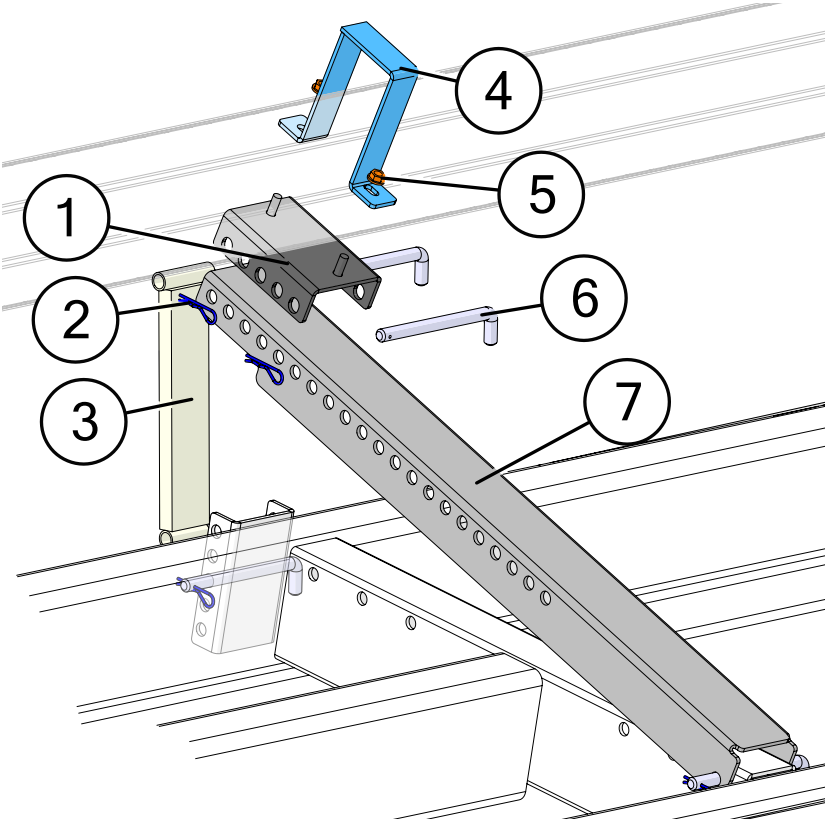
Description		Part No.
1	Removable Header Stop Gusset	JM0003075
2	Upper Header Wagon Mount	JM0014351
3	3/16" x 2-1/2" Hair Clip Pin (316HP)	JM0001657
4	Low Profile Bottom Mount Weldment 4" x 8" (Front)	JM0037707
5	5/8"-11 x 6-1/2" Gr5 Z Carriage Bolt	JM0001651
6	3/4" L Pin (10-9/32" Length)	JM0003076
7	1/2"-13 Gr2 Z Centerlock Hex Nut	JM0001511
8	1/2"-13 x 5-1/2" Gr5 Z Hex Bolt	JM0001498
9	2" Wide x 60" Tie Down Strap with Double J Hook Sewn In (TDS-1)	JM0029979
10	2" Tie-Down Ratchet (10,000 lb) (RA-1)	JM0003084
11	Tie-Down Bracket 4" x 8"	JM0058789
12	5/8" USS Flat Washer	JM0003073
13	Header Saddle Mount Bolt (Coupler)	JM0001653
14	Clamp Handle Weldment (CHA2)	JM0001656
15	Extra Low Profile Mount 4" x 8" (Front)	JM0055120
16	Extra Low Profile Mount 4" x 8" (Back)	JM0055119
17	Low Profile Bottom Mount Weldment 4" x 8" (Back)	JM0030696
18	High Profile Bottom Mount Weldment 4" x 8" (Front)	JM0055116
19	High Profile Bottom Mount Weldment 4" x 8" (Back)	JM0045643
20	Extra Low Pro Mount Weldment for 4" x 8" Tube (4-1/2" Lip) (Front)	JM0058032
21	Extra Low Pro Mount Weldment for 4" x 8" Tube (4-1/2" Lip) (Back)	JM0058033
22	3-1/4" High Base Weldment for 4" x 8" Tube with Upper Mount (4-1/2" Lip) (Front)	JM0058029
23	3-1/4" High Base Weldment for 4" x 8" Tube with Upper Mount (4-1/2" Lip) (Back)	JM0058030
24	6-3/4" High Base Weldment for 4" x 8" Tube with Upper Mount (4-1/2" Lip) (Front)	JM0058026
25	6-3/4" High Base Weldment for 4" x 8" Tube with Upper Mount (4-1/2" Lip) (Back)	JM0058027
26	Extra Low Profile Header Mount Assembly for 4" x 8" Tube, 4-1/2" Lip (Set)	JM0058034
27	Header Mount Assembly 3-1/4" High Base for 4" x 8" Tube, Upper Mount 4-1/2" Lip (Set)	JM0058031
28	Header Mount Assembly 6-3/4" High Base for 4" x 8" Tube, Upper Mount 4-1/2" Lip (Set)	JM0058028

# Rear Upper Bar Support



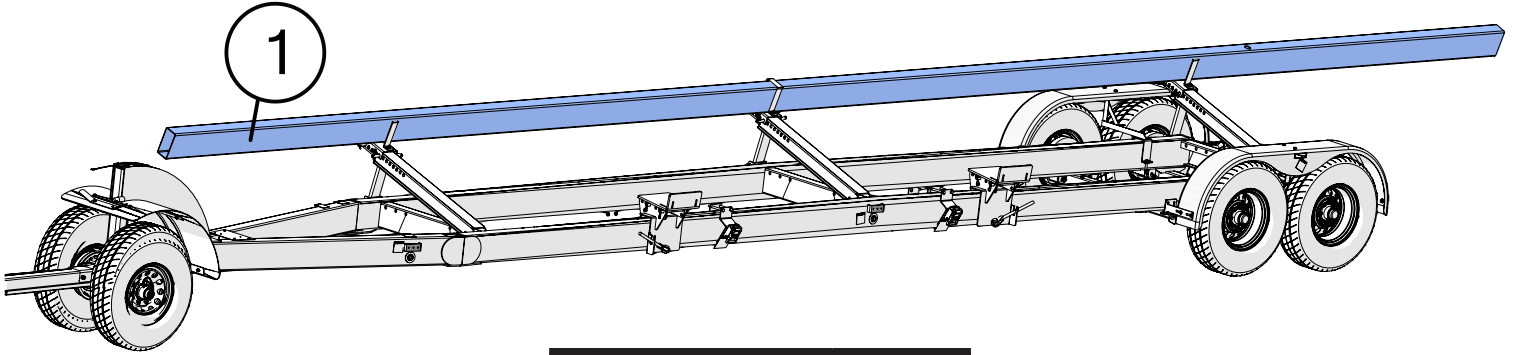
	Description	Part No.
1	3/4"-10 Gr2 Z Centerlock Hex Nut	JM0002147
2	3/4"-10 x 2" Gr5 Z Hex Bolt	JM0002106
3	Knee Brace Bolt On Lower Weldment	JM0030418
4	Splice Clamp for 4" x 8" Top Tube	JM0012934
5	1/2"-13 x 3-1/2" Gr5 Z Hex Bolt	JM0009914
6	1/2"-13 Gr2 Z Centerlock Hex Nut	JM0001511
7	Knee Brace Clamp Lower Weldment	JM0030417
8	Cotter Pin (for 1" Diameter Clevis Pin)	JM0003064
9	1" x 3" Clevis Pin with Cotter Pins	JM0019407
10	HD Adjustable Pac Man Weldment Left Hand Thread	JM0030422
11	1-1/4"-12 Gr5 PN LH Hex Nut	JM0019931
12	Knee Brace Turnbuckle Center Pipe Weldment	JM0030420
13	1-1/4"-12 Gr5 PN RH Hex Nut	JM0019930
14	HD Adjustable Pac Man Weldment	JM0021417
15	Knee Brace Turnbuckle Assembly	JM0030427

# Lifting Arms & Props



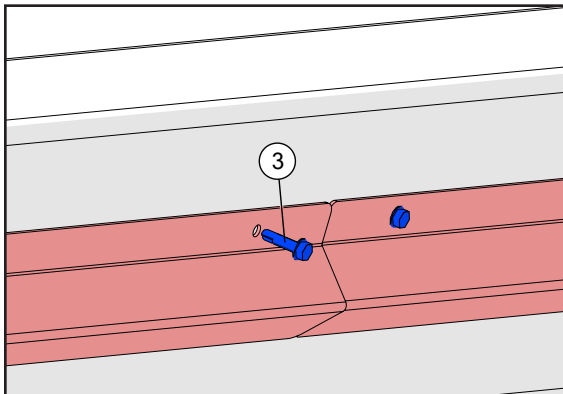
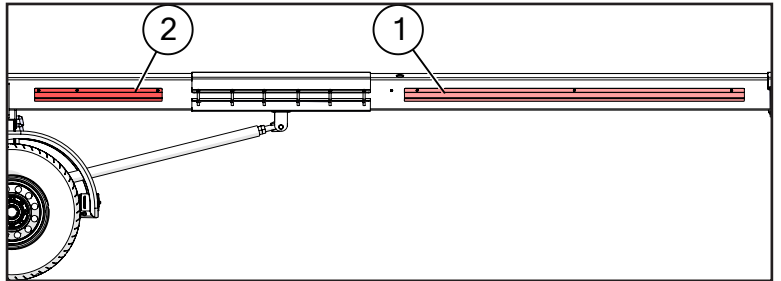
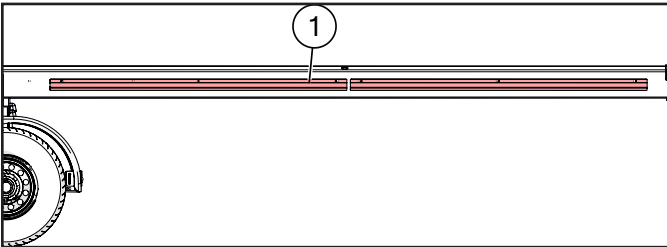
	Description	Part No.
1	Upper Bar Slide Mount (UBSM-3)	JM0015133
2	3/16" x 2-1/2" Hair Clip Pin (316HP)	JM0001657
3	Upper Bar Support Arm (UBSA-3)	JM0003077
4	Upper Bar Clamp (4x8) (UBC-3)	JM0003081
5	1/2"-13 Gr5 Z SF Hex Nut	JM0002153
6	3/4" x 8" Z L Pin (Header Wagon, c450)	JM0029738
7	HT974 Scissor Arm (Stalk Roller Option)	JM0054841

# Upper Bar



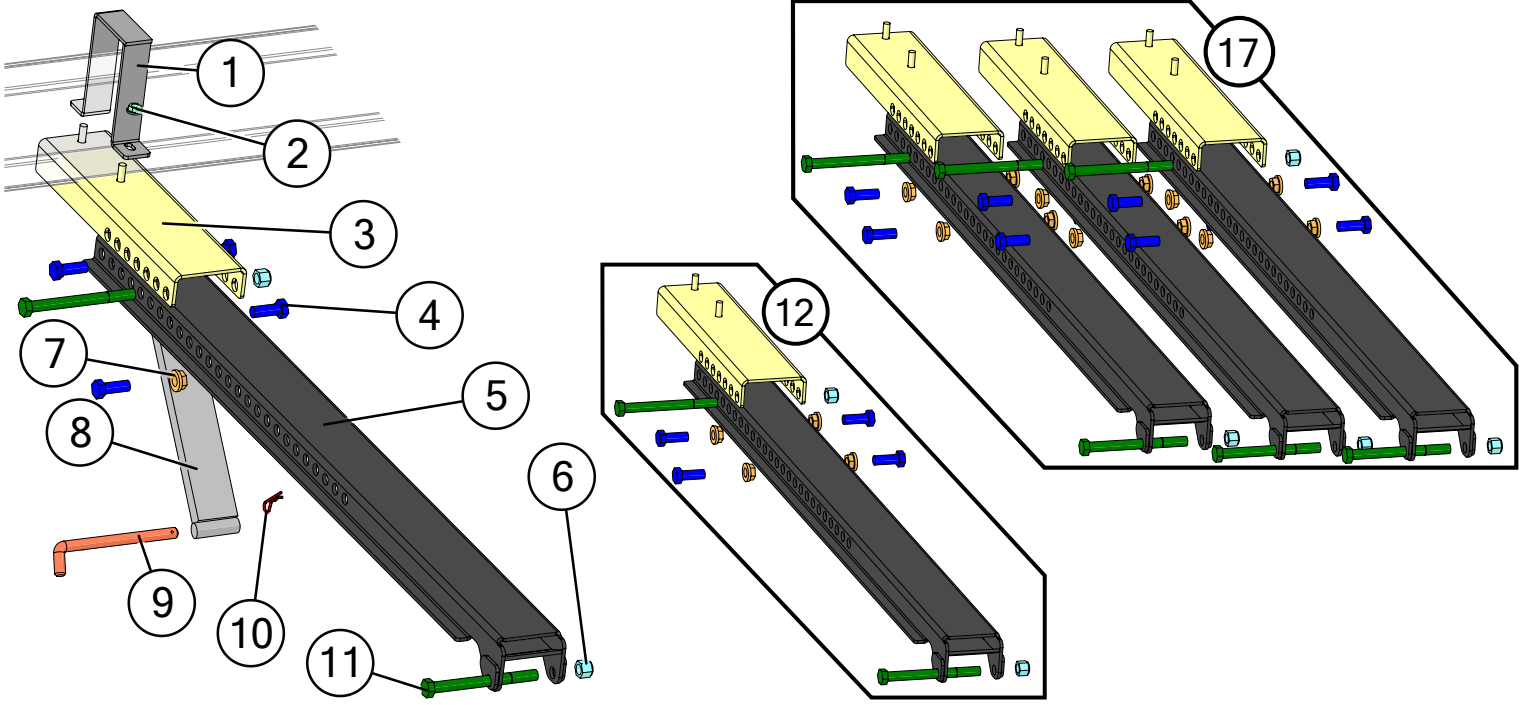
	Description	Part No.
1	4" x 8" x 32' Upper Bar	JM0008541
1	4" x 8" x 38' Upper Bar	JM0008542
1	4" x 8" x 42' Upper Bar	JM0008539
1	4" x 8" x 48' Upper Bar	JM0058688

# Wire Conduit

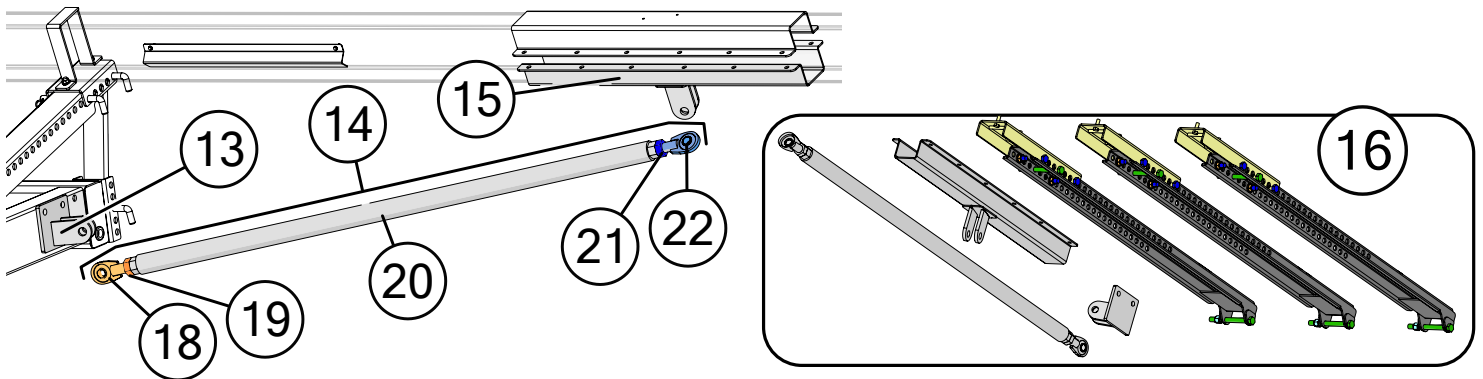


	Description	Part No.
1	High Speed Header Conduit 80" (42' & 48')	JM0018620
2	High Speed Header Conduit 30" (32', 38', & 48')	JM0018621
3	1/4" x 1" Self Tapping Screw	JM0001716

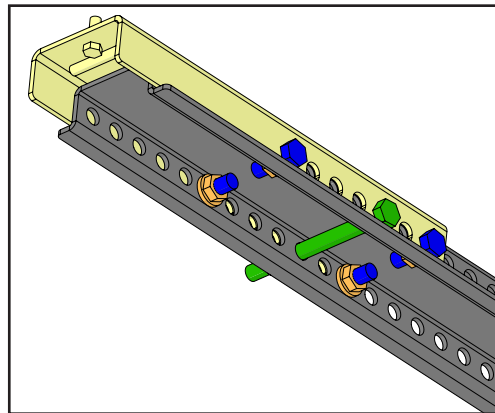
# MacDon FD2 Extensions



TB-6000-48 or TB-8000-48 Specific Parts



Picture below shows the suggested set up for your FD2 MacDon header.

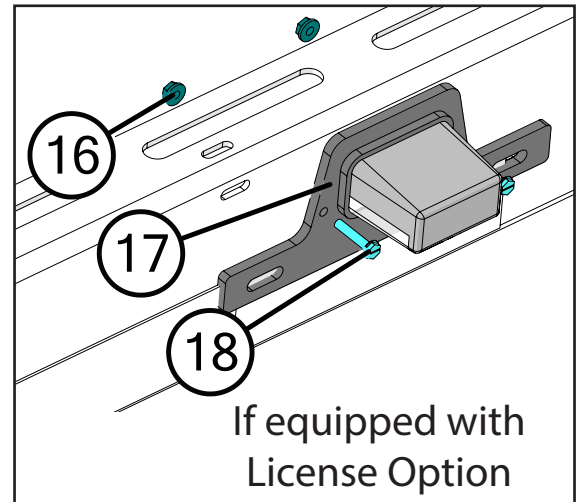
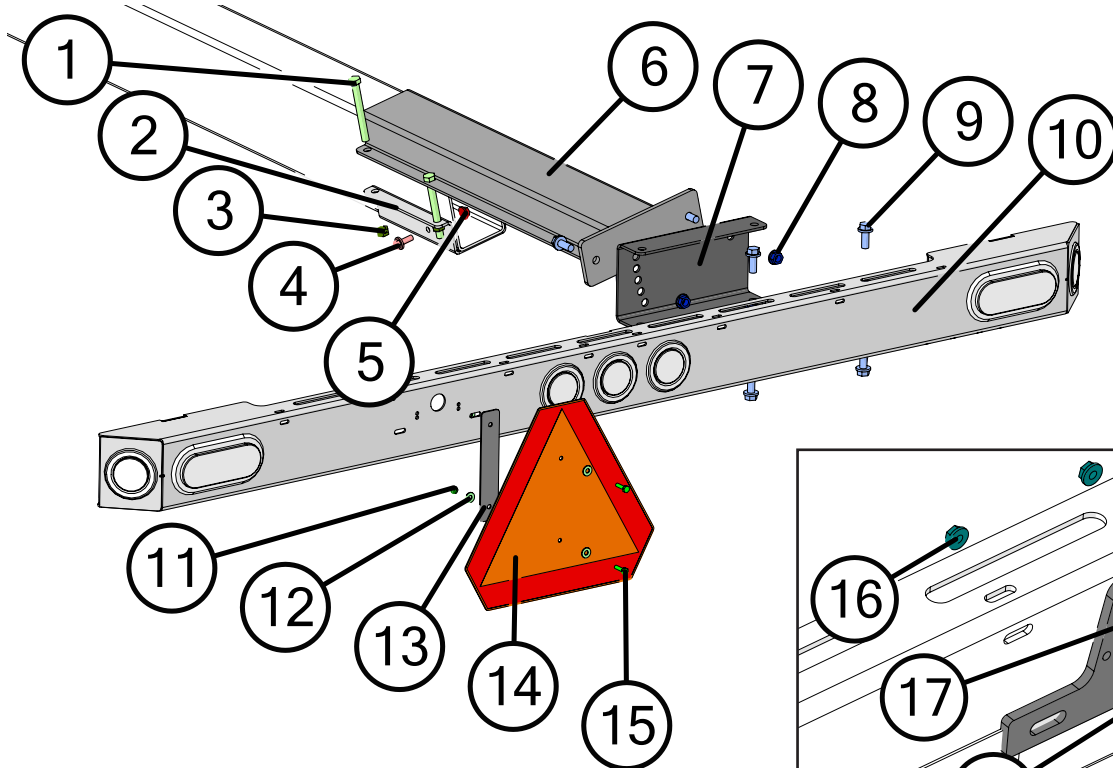




# MacDon FD2 Extensions

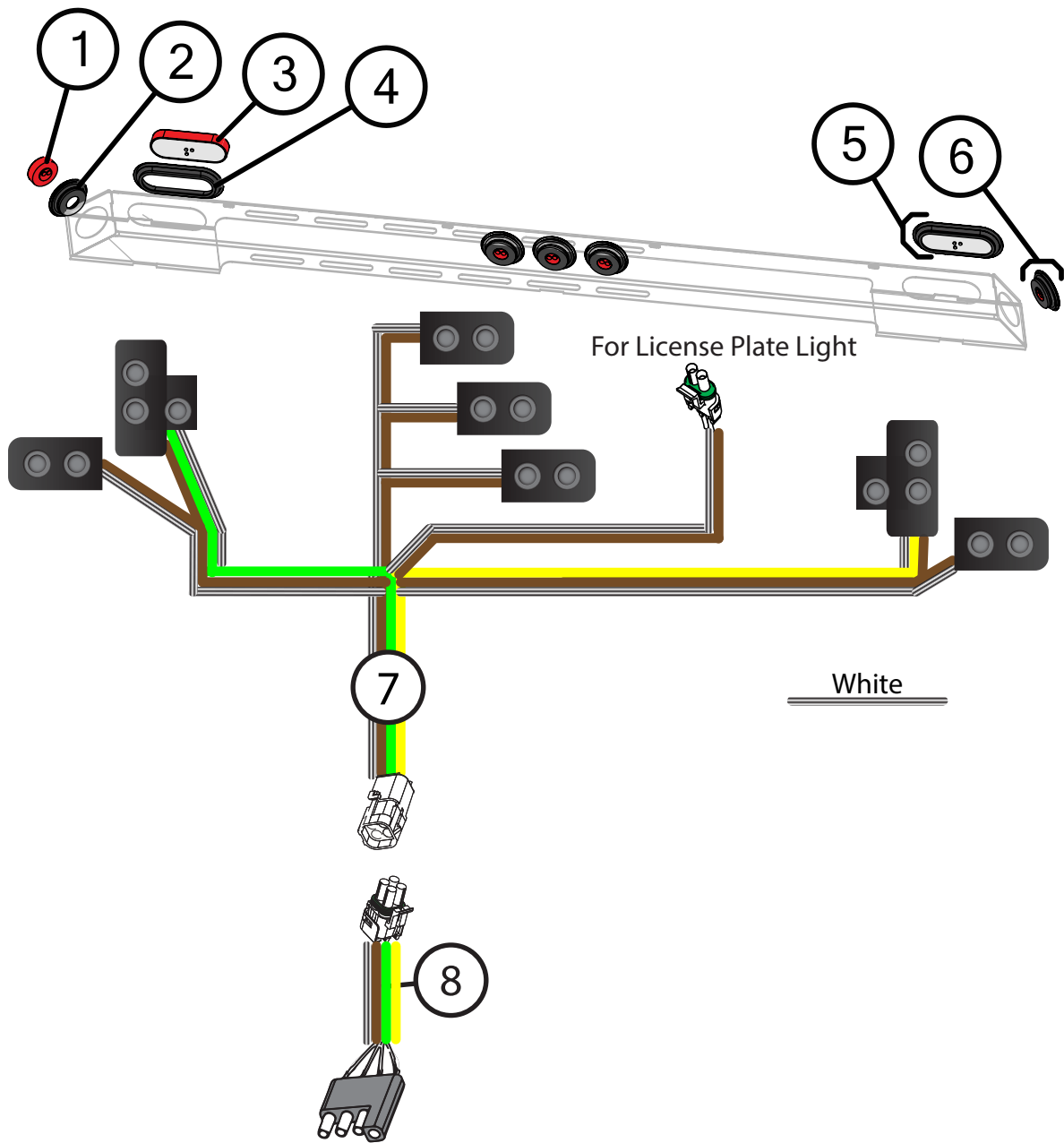
	Description	Part No.
1	Upper Bar Clamp (4x8) (UBC-3)	JM0003081
2	1/2"-13 Gr5 Z SF Hex Nut	JM0002153
3	Lifting Arm 10" Extension Weldment	JM0079958
4	3/4"-10 x 2" Gr5 Z Hex Bolt	JM0002106
5	Lifting Arm with Gusset Weldment - 60" Hole Spread (4WS)	JM0080106
6	3/4"-10 Gr2 Z Nylon Locking Hex Nut	JM0026756
7	3/4"-10 Gr5 Z SF Hex Nut	JM0009921
8	Upper Bar Support Arm (UBSA-3)	JM0003077
9	3/4" x 8" Z L Pin (Header Wagon, c450)	JM0029738
10	3/16" x 2-1/2" Hair Clip Pin (316HP)	JM0001657
11	3/4"-10 x 8" Gr8 Z Hex Bolt	JM0080110
12	MacDon FD2 Lifting Arm 10" Extension Assembly	JM0080137
13	Angled Knee Brace Bolt On Lower Weldment	JM0080352
14	MacDon FD2 Long Knee Brace Turnbuckle Assembly	JM0080221
15	Short Angled Knee Brace Clamp Lower Weldment	JM0080200
16	TB-48 MacDon FD2 Lifting Arm 10" Extension Assembly Kit with Long Knee Brace	JM0082232
17	TB -32, -38, -42 MacDon FD2 Lifting Arm 10" Extension Assembly Kit	JM0082213
18	HD Adjustable Pac Man Weldment Left Hand Thread	JM0030422
19	1-1/4"-12 Gr5 PN LH Hex Nut	JM0019931
20	MacDon FD2 Long Knee Brace Turnbuckle Center Pipe Weldment	JM0080218
21	1-1/4"-12 Gr5 PN RH Hex Nut	JM0019930
22	HD Adjustable Pac Man Weldment	JM0021417

# Upper Bar Extension and Light Bar



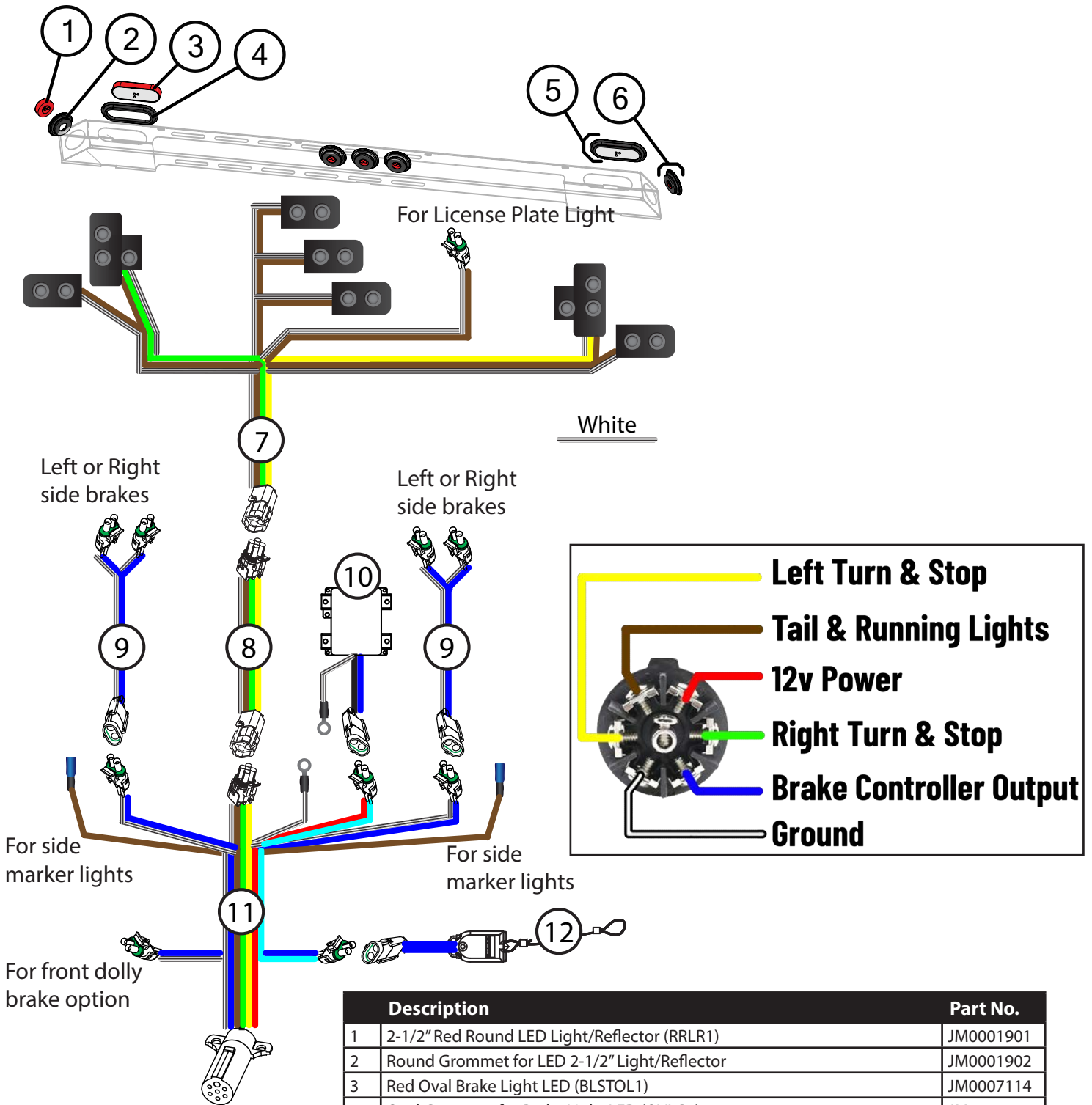
	Description	Part No.
1	1/2"-13 x 4-1/2" Gr5 Z Hex Bolt	JM0008548
2	Short Light Bar Mount Clamp (9"L)	JM0061627
3	1/2"-13 Gr2 Z Centerlock Hex Nut	JM0001511
4	3/8"-16 x 1" Gr5 Z SF Hex Bolt	JM0002092
5	3/8"-16 Gr5 Z SF Hex Nut	JM0002152
6	Header Transport Light Mount Extension Bracket (2 Hole)	JM0061609
7	Header Transport Light Mount Adapter Bracket	JM0061613
8	1/2"-13 Gr5 Z SF Hex Nut	JM0002153
9	1/2"-13 x 1-1/4" Gr5 Z SF Hex Bolt	JM0010002
10	Highspeed Header Transport Lightbar Weldment	JM0068907
11	1/4"-20 Gr2 Z Centerlock Hex Nut	JM0001505
12	1/4" ID, 3/4" OD Z Flat Washer	JM0003090
13	SMV Bracket	JM0001645
14	Slow Moving Vehicle Sign	JM0001616
15	1/4"-20 x 1" Gr5 Z Hex Bolt	JM0002095
16	#10-24 Gr5 Z SF Hex Nut	JM0009983
17	Jammy License Plate Holder and Light	JM0087555
18	#10-24 x 1" Slotted Hex Washer Head Machine Screw	JM0009982

# Lights and Wiring for Pivoting Lightbar Non-License No Brakes



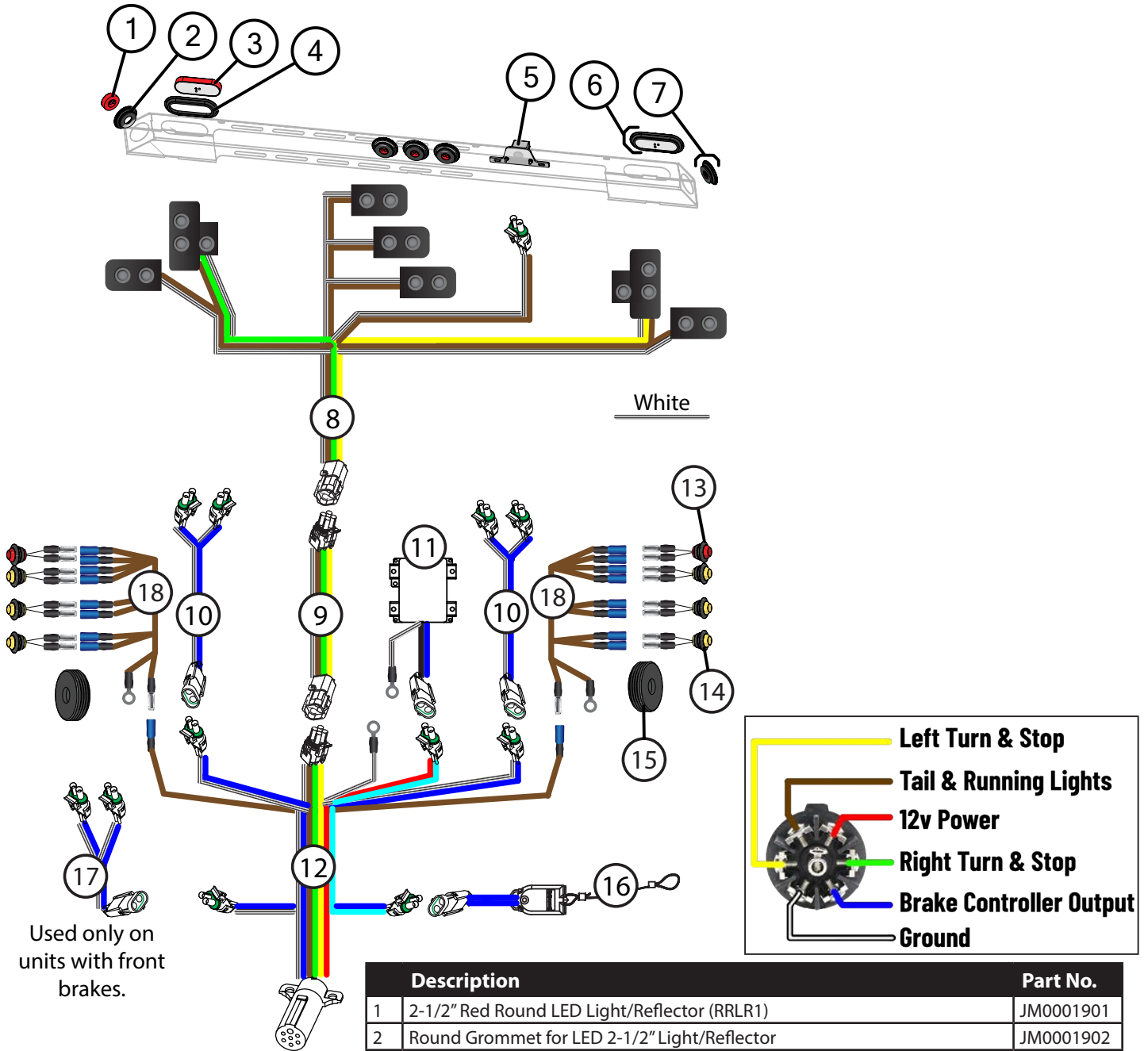
Description	Part No.
1 2-1/2" Red Round LED Light/Reflector (RRLR1)	JM0001901
2 Round Grommet for LED 2-1/2" Light/Reflector	JM0001902
3 Red Oval Brake Light LED (BLSTOL1)	JM0007114
4 Oval Grommet for Brake Light LED (OVLG1)	JM0001897
5 Red Oval Brake Light LED Assembly (BLSTOA1)	JM0001903
6 2-1/2" Red Round LED Light/Reflector Assembly (RRLA1)	JM0001905
7 Header Transport Light Bar Harness 2023 and Newer	JM0081268
8 Main Harness, AG No Brakes (2024 & Newer)	JM0082290

# Lights and Wiring for Pivoting Lightbar Non-License with Brakes



Description	Part No.
1 2-1/2" Red Round LED Light/Reflector (RRLR1)	JM0001901
2 Round Grommet for LED 2-1/2" Light/Reflector	JM0001902
3 Red Oval Brake Light LED (BLSTOL1)	JM0007114
4 Oval Grommet for Brake Light LED (OVLG1)	JM0001897
5 Red Oval Brake Light LED Assembly (BLSTOA1)	JM0001903
6 2-1/2" Red Round LED Light/Reflector Assembly (RRLA1)	JM0001905
7 Header Transport Light Bar Harness 2023 and Newer	JM0081268
8 Trail Blazer Rear Light Harness Extension (Brown, Green, Yellow, and White)	JM0030439
9 Trail-Blazer Main Brake Harness (Blue and White)	JM0030435
10 Break Away Battery Box Assembly (HSBB1)	JM0001833
11 Main Trail-Blazer Highway Wiring Harness with 7-Way Trailer Connector	JM0030434
12 Breakaway Switch with Cable (BAS-1)	JM0001843

# Lights and Wiring on Pivoting Lightbar - License



	Description	Part No.
1	2-1/2" Red Round LED Light/Reflector (RRLR1)	JM0001901
2	Round Grommet for LED 2-1/2" Light/Reflector	JM0001902
3	Red Oval Brake Light LED (BLSTOL1)	JM0007114
4	Oval Grommet for Brake Light LED (OVLG1)	JM0001897
5	Jammy License Plate Holder and Light	JM0087555
6	Red Oval Brake Light LED Assembly (BLSTOA1)	JM0001903
7	2-1/2" Red Round LED Light/Reflector Assembly (RRLA1)	JM0001905
8	Header Transport Light Bar Harness 2023 and Newer	JM0081268
9	Trail Blazer Rear Light Harness Extension (Brown, Green, Yellow, and White)	JM0030439
10	Hwy Main Brake-Marker Harness	JM0081390
11	Break Away Battery Box Assembly (HSBB1)	JM0001833
12	Red 3/4" Round LED	JM0061222
13	Amber 3/4" Round LED	JM0061221
14	Plastic Plug for 2-1/4" Hole with 3/4" Center Hole	JM0073454
15	Main Trail-Blazer Highway Wiring Harness with 7-Way Trailer Connector	JM0030434
16	Breakaway Switch with Cable (BAS-1)	JM0001843
17	HT Front Brake Splitter Option	JM0083349
18	#N/A!	JM0083231