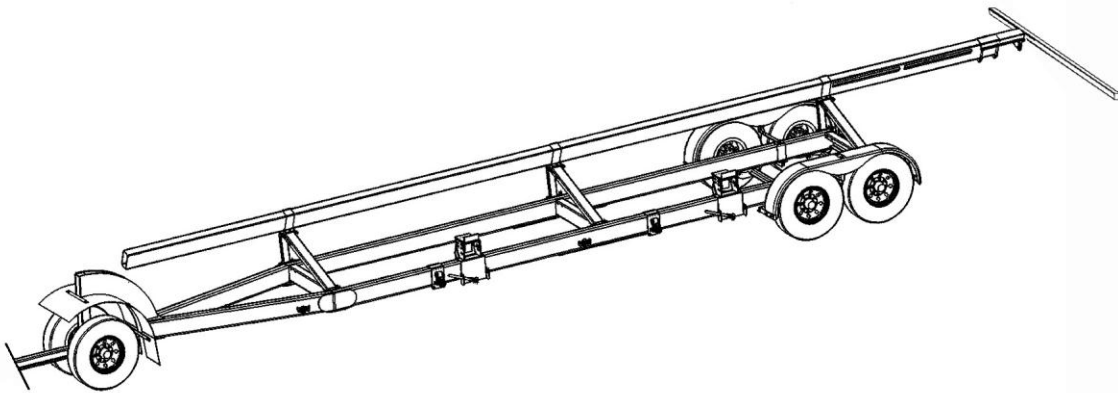


OPERATOR'S MANUAL

Set-Up Instructions and Parts Catalog for

Model TB-8000H-42 Trail-Blazer Header Transports



Commercial Grade Header Transport
With 8,000 lb. Rated Axles

Highway Version



J. & M. Manufacturing Co., Inc.
P.O. Box 547
Fort Recovery, OH 45846

Phone: (419) 375 2376 Fax: (419) 375-2708
E-mail: sales@jm-inc.com Website: www.jm-inc.com

REV-12-22-08

TO THE DEALER:

Read manual instructions and safety rules. Make sure all items on the Dealer's Pre-Delivery and Delivery Check Lists in the Operator's Manual are completed before releasing equipment to the owner.

The dealer must complete the Warranty Registration Card attached to the front inside cover of this manual and return to J. & M. Mfg. Co., Inc. at the address indicated on the card. **Warranty claims will be denied if the Warranty Registration Card has not been completed and returned.**

EXPRESS WARRANTY:

J. & M. Mfg. Co. Inc. warrants against defects in construction or materials for a period of ONE year. We reserve the right to inspect and decide whether material or construction was faulty or whether abuse or accident voids our guarantee.

Warranty service must be performed by a dealer or service center authorized by J. & M. Mfg. Co. Inc. to sell and/or service the type of product involved, which will use only new or remanufactured parts or components furnished by J. & M. Mfg. Co. Inc. Warranty service will be performed without charge to the purchaser for parts or labor based on the Warranty Labor Times schedule. Under no circumstance will allowable labor times extend beyond the maximum hours indicated in the Warranty Labor Times schedule for each warranty procedure. The purchaser will be responsible, however, for any service call and/or transportation of the product to and from the dealer or service center's place of business, for any premium charged for overtime labor requested by the purchaser, and for any service and/or maintenance not directly related to any defect covered under the warranty. Costs associated with equipment rental, product down time, or product disposal are not warrantable and will not be accepted under any circumstance.

Each warranty term begins on the date of product delivery to the purchaser. Under no circumstance will warranty be approved unless (i) the product warranty registration card (attached to the inside of the Operator's Manual) has been properly completed and submitted to the equipment manufacturer. This Warranty is effective only if the warranty registration card is returned within 30 days of purchase.

This warranty does not cover a component which fails, malfunctions or is damaged as a result of (i) improper modification or repair, (ii) accident, abuse or improper use, (iii) improper or insufficient maintenance, or (iv) normal wear or tear. This warranty does not cover products that are previously owned and extends solely to the original purchaser of the product. Should the original purchaser sell or otherwise transfer this product to a third party, this Warranty does not transfer to the third party purchaser in any way. J. & M. Mfg. Co. Inc. makes no warranty, express or implied, with respect to tires or other parts or accessories not manufactured by J. & M. Mfg. Co. Inc. Warranties for these items, if any, are provided separately by their respective manufacturers.

THIS WARRANTY IS EXPRESSLY IN LIEU OF ALL OTHER WARRANTIES OR CONDITIONS, EXPRESS, IMPLIED OR STATUTORY, INCLUDING ANY IMPLIED WARRANTY OF MERCHANTABILITY OR FITNESS FOR PARTICULAR PURPOSE.

In no event shall J. & M. Mfg. Co. Inc. be liable for special, direct, incidental or consequential damages of any kind. The exclusive remedy under this Warranty shall be repair or replacement of the defective component at J. & M. Mfg. Co. Inc.'s option. This is the entire agreement between J. & M. Mfg. Co. Inc. and the Owner about warranty and no J. & M. Mfg. Co. Inc. employee or dealer is authorized to make any additional warranty on behalf of J. & M. Mfg. Co. Inc.

The manufacturer reserves the right to make product design and material changes at any time without notice. They shall not incur any obligation or liability to incorporate such changes and improvements in products previously sold to any customer, nor shall they be obligated or liable for the replacement of previously sold products with products or parts incorporating such changes.

SERVICE:

The equipment you have purchased has been carefully manufactured to provide dependable and satisfactory use. Like all mechanical products, it will require cleaning and upkeep. Lubricate the unit as specified. Observe all safety information in this manual and safety signs on the equipment.

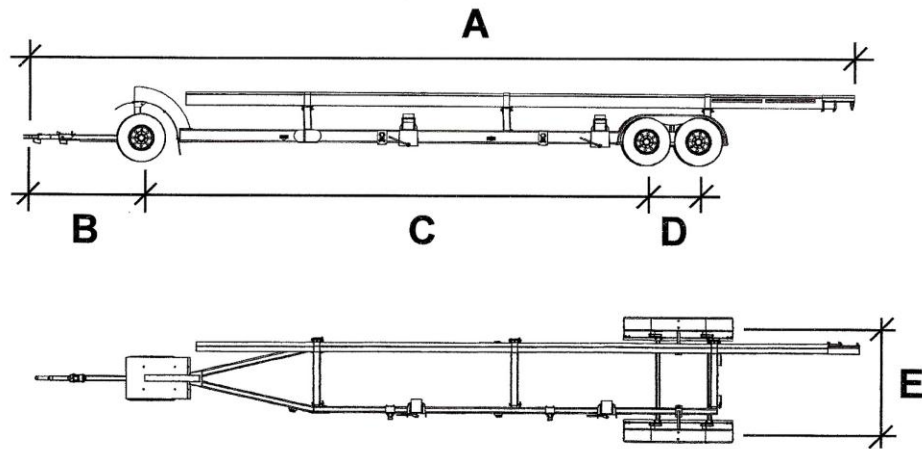
For service, your authorized J. & M. dealer has trained mechanics, genuine J. & M. service parts, and the necessary tools and equipment to handle all your needs.

Use only genuine J. & M. service parts. Substitute parts may void the warranty and may not meet standards required for safe and satisfactory operation. Record the model number and serial number of your equipment in the spaces provided:

Serial # _____ Purchase Date: _____ Purchased From: _____

Please provide this information to your dealer to obtain the correct parts:

MODEL TB-8000H-42 Header Transport Specifications



| DIMENSIONS | |
|-------------|------------------|
| TB-8000H-42 | |
| A | 52'-6" to 56'-6" |
| B | 6'-0" |
| C | 30'-0" |
| D | 2'-10" |
| E | 6'-0" |

| SPECIFICATIONS | |
|----------------------|--|
| Capacity | 18,000 lbs |
| Weight | 3,710 lbs |
| Wheels | 16" x 6"-8-65 |
| Hubs | 8 bolt |
| Spindles | Two - 2-1/4" dia. (front) and Four - 2-1/2" dia. (rear) |
| Main Frame | 4" x 8" x 3/16" steel tubing |
| Steel Upper Bar | 4" x 8" x 3/16" steel tubing |
| Adj. Header Mounts | Standard |
| Tie Down Straps | Standard |
| Rear Electric Brakes | Standard on Both Rear Axles |
| | |

GENERAL INFORMATION

TO THE OWNER:

The purpose of this manual is to assist you in operating and maintaining your running gear in a safe manner. Read it carefully. It furnishes information and instructions that will help you achieve years of dependable performance and help maintain safe operating conditions. If this machine is used by an employee or is loaned or rented, make certain that the operator(s), prior to operating:

1. Is instructed in safe and proper use.
2. Reviews and understands the manual(s) pertaining to this machine.

Throughout this manual, the term **IMPORTANT** is used to indicate that failure to observe can cause damage to equipment. The terms **CAUTION**, **WARNING** and **DANGER** are used in conjunction with the Safety-Alert Symbol, (a triangle with an exclamation mark), to indicate the degree of hazard for items of personal safety. When you see this symbol, carefully read the message that follows and be alert to the possibility of personal injury or death.



This Safety-Alert symbol indicates a hazard and means
ATTENTION! BECOME ALERT! YOUR SAFETY IS INVOLVED!

Indicates an imminently hazardous situation that, if not avoided, will result in death or serious injury.

Indicates a potentially hazardous situation that, if not avoided, could result in death or serious injury, and includes hazards that are exposed when guards are removed.

Indicates a potentially hazardous situation that, if not avoided, may result in minor or moderate injury.

Indicates that failure to observe can cause damage to equipment.

Indicates helpful information.

GENERAL INFORMATION (continued)

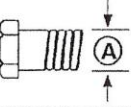
BOLT TORQUE CHART

Always tighten hardware to these values unless a different torque or tightening procedure is listed for a specific application.


Fasteners must always be replaced with the same grade as specified in the manual parts list.

Always use the proper tool for tightening hardware. SAE for SAE hardware and Metric for metric hardware.


Make sure fastener threads are clean and you start the thread engagement properly. All torque values are given to specification used on hardware defined by SAE J1701 & J1701M (Jul 96).



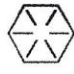
**SAE SERIES
TORQUE
CHART**



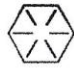
SAE Grade 2
(No Dashes)




SAE Bolt Head
Identification

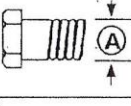


SAE Grade 5
(3 Radial Dashes)



SAE Grade 8
(6 Radial Dashes)

|  Diameter (Inches) | Wrench Size | MARKING ON HEAD | | | | | |
|---|----------------|-----------------|-----|----------|-----|----------|------|
| | | SAE 2 | | SAE 5 | | SAE 8 | |
| | | Lbs.-Ft. | N-m | Lbs.-Ft. | N-m | Lbs.-Ft. | N-m |
| 1/4 | 7/16" | 6 | 8 | 10 | 13 | 14 | 18 |
| 5/16 | 1/2" | 12 | 17 | 19 | 26 | 27 | 37 |
| 3/8 | 9/16" | 23 | 31 | 35 | 47 | 49 | 67 |
| 7/16 | 5/8" | 36 | 48 | 55 | 75 | 78 | 106 |
| 1/2 | 3/4" | 55 | 75 | 85 | 115 | 120 | 163 |
| 9/16 | 13/16" | 78 | 106 | 121 | 164 | 171 | 232 |
| 5/8 | 15/16" | 110 | 149 | 170 | 230 | 240 | 325 |
| 3/4 | 1-1/8" | 192 | 261 | 297 | 403 | 420 | 569 |
| 7/8 | 1-5/16" | 306 | 416 | 474 | 642 | 669 | 907 |
| 1 | 1-1/2" | 467 | 634 | 722 | 979 | 1020 | 1383 |



METRIC SERIES

TORQUE

CHART

8.8

Metric

Grade 8.8

Metric Bolt Head

Identification

10.9

Metric

Grade 10.9

| <div>Diameter & Thread Pitch (Millimeters)</div> <div>A</div> | Wrench Size | COARSE THREAD | | | | FINE THREAD | | | | <div>Diameter & Thread Pitch (Millimeters)</div> <div>A</div> | | |
|---|-------------|-----------------|----------|-------------|----------|-------------|----------|-----------------|----------|---|--|--|
| | | MARKING ON HEAD | | | | | | MARKING ON HEAD | | | | |
| | | Metric 8.8 | | Metric 10.9 | | Metric 8.8 | | Metric 10.9 | | | | |
| | | N-m | Lbs.-Ft. | N-m | Lbs.-Ft. | N-m | Lbs.-Ft. | N-m | Lbs.-Ft. | | | |
| 6 x 1.0 | 10 mm | 8 | 6 | 11 | 8 | 8 | 6 | 11 | 8 | 6 x 1.0 | | |
| 8 x 1.25 | 13 mm | 20 | 15 | 27 | 20 | 21 | 16 | 29 | 22 | 8 x 1.0 | | |
| 10 x 1.5 | 16 mm | 39 | 29 | 54 | 40 | 41 | 30 | 57 | 42 | 10 x 1.25 | | |
| 12 x 1.75 | 18 mm | 68 | 50 | 94 | 70 | 75 | 55 | 103 | 76 | 12 x 1.25 | | |
| 14 x 2.0 | 21 mm | 109 | 80 | 151 | 111 | 118 | 87 | 163 | 120 | 14 x 1.5 | | |
| 16 x 2.0 | 24 mm | 169 | 125 | 234 | 173 | 181 | 133 | 250 | 184 | 16 x 1.5 | | |
| 18 x 2.5 | 27 mm | 234 | 172 | 323 | 239 | 263 | 194 | 363 | 268 | 18 x 1.5 | | |
| 20 x 2.5 | 30 mm | 330 | 244 | 457 | 337 | 367 | 270 | 507 | 374 | 20 x 1.5 | | |
| 22 x 2.5 | 34 mm | 451 | 332 | 623 | 460 | 495 | 365 | 684 | 505 | 22 x 1.5 | | |
| 24 x 3.0 | 36 mm | 571 | 421 | 790 | 583 | 623 | 459 | 861 | 635 | 24 x 2.0 | | |
| 30 x 3.0 | 46 mm | 1175 | 867 | 1626 | 1199 | 1258 | 928 | 1740 | 1283 | 30 x 2.0 | | |

TABLE OF CONTENTS

| | |
|--|-------|
| INTRODUCTION | 2 |
| EXPRESS WARRANTY | 2 |
| SPECIFICATIONS | 3 |
| GENERAL INFORMATION | 4 |
| BOLT TORQUE CHART | 5 |
| SAFETY RULES | 7 |
| SAFETY | 7 |
| SAFETY SIGNS | 8 |
| SET-UP INSTRUCTIONS | 8-13 |
| REPAIR PARTS LIST | |
| Main Frame and Upper Bar | 14 |
| Front Axle Assembly | 14 |
| Tie-Down Bracket and Adjustable Header Mount | 15 |
| Adjustable Upper Bar Mount | 15 |
| Rear Axle Assembly | 16 |
| Rear Fender Assembly | 16 |
| Light Kit and Wiring Diagram | 17-18 |
| INITIAL OPERATION / MAINTENANCE | 18-19 |
| REPORTING SAFETY DEFECTS | 19 |
| SERVICE / MAINTENANCE RECORD | 20 |
| | |

SAFETY RULES

ATTENTION! BECOME ALERT! YOUR SAFETY IS INVOLVED!

- Safety is a primary concern in the design and manufacture of our products. Unfortunately, our efforts to provide safe equipment can be erased by an operator's single careless act. In addition, hazard control and accident prevention are dependent upon the awareness, concern, judgment, and proper training of personnel involved in the operation, transport, maintenance and storage of equipment.
- Make certain that the operator(s), prior to operating is instructed in safe and proper use and reviews and understands the manual(s) pertaining to this machine.
- Read this manual before you operate this machine. If you do not understand any part of this manual, or need more information, contact the manufacturer or your authorized dealer.

SAFETY

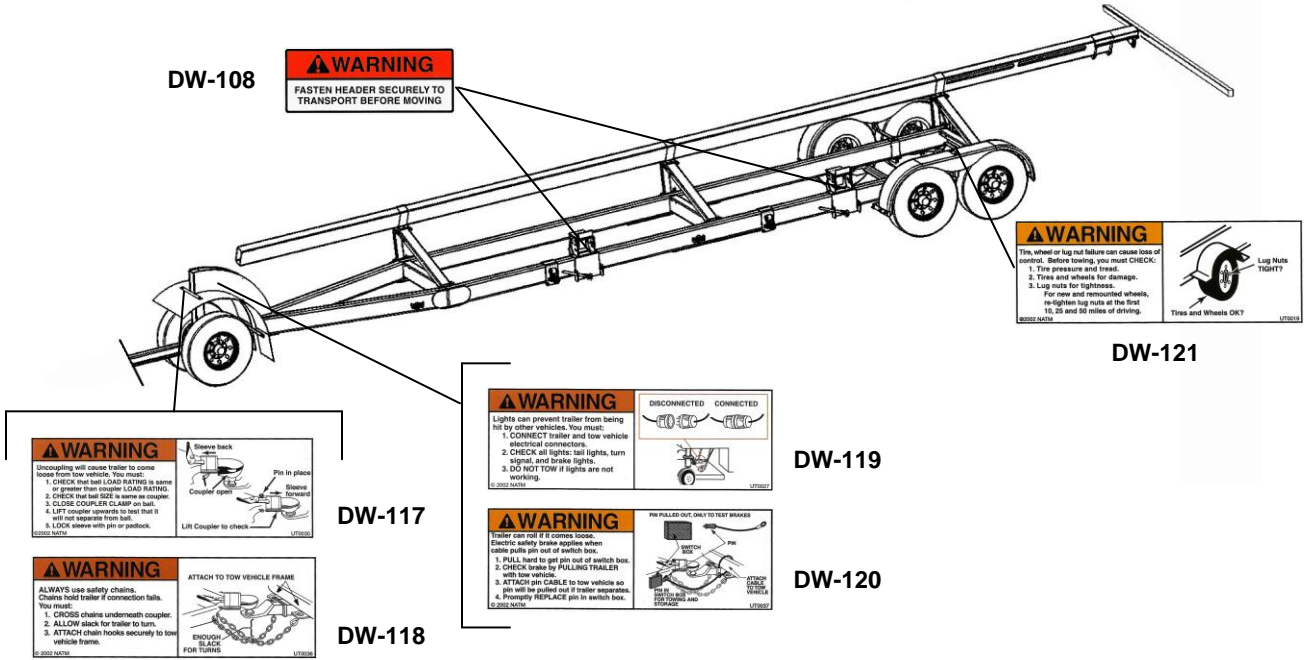
- ✓ Understand that your safety and the safety of other persons are measured by how you service, and operate this machine. Know the positions and functions of all controls before you try to operate them. Make sure to check all controls in a safe area before starting your work.
- ✓ The safety information given in this manual does not replace safety codes, federal, state or local laws. Make certain your machine has the proper equipment as designated by local laws and regulations.
- ✓ A frequent cause of personal injury or death is from persons falling off equipment and being run over. Do not permit persons to ride on this machine.
- ✓ Travel speeds should be such that complete control and machine stability is maintained at all times. Where possible, avoid operating near ditches, embankments and holes. Reduce speed when turning, crossing slopes and rough, slick or muddy surfaces.
- ✓ Make sure that the header is fastened securely to the transport before moving.
- ✓ Make sure that everyone is clear of equipment before applying power or moving the machine. NEVER position yourself under or near header when mounting on header transport.
- ✓ Never adjust, service, clean or lubricate the header transport until all power is shut off.
- ✓ Make sure that the implement is fastened securely to the towing unit.
- ✓ Before unhooking the implement from the towing unit, be sure to properly block the wheels to prevent the implement from moving.
- ✓ Never overload the header transport. Overloading the header transport is dangerous and can cause extensive damage.
- ✓ IMPORTANT: Use caution when transporting. Be alert of the transport unit's overall width when approaching obstacles, such as post signs and poles, along the road. Check the transport width of the unit to ensure clearance before entering bridges.
- ✓ COMPLY WITH ALL SAFETY WARNINGS AND CAUTIONS IN THIS MANUAL AND IN THE COMBINE OPERATORS MANUAL.
- ✓ WARNING: BE SURE ALL LIGHTS ARE WORKING PROPERLY BEFORE HIGHWAY TRAVEL.
- ✓ USE ONLY 2-5/16" BALL HITCH TO TRANSPORT UNIT.

SAFETY SIGNS

ATTENTION: BECOME ALERT! YOUR SAFETY IS INVOLVED!

Replace Immediately If Damaged or Missing!

IMPORTANT: Install new safety signs if the old signs are destroyed, lost, painted over or cannot be read. New signs are available from the manufacturer or your authorized dealer.



DECAL PARTS LIST

| Item # | Part # | Description |
|--------|--------|-----------------------------------|
| 1 | DW-108 | Warning: Fasten Header Securely |
| 2 | DW-117 | Warning: Uncoupling |
| 3 | DW-118 | Warning: Always Use Safety Chains |
| 4 | DW-119 | Warning: Lighting |
| 5 | DW-120 | Warning: Electric Safety Brakes |
| 6 | DW-121 | Warning: Tire, Wheel, Lug Nut |
| | | |

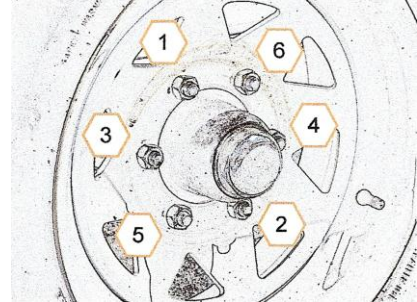
SET-UP INSTRUCTIONS

IMPORTANT: Set-up work to be performed by qualified servicemen only.

1. Mounting the Rear Axles

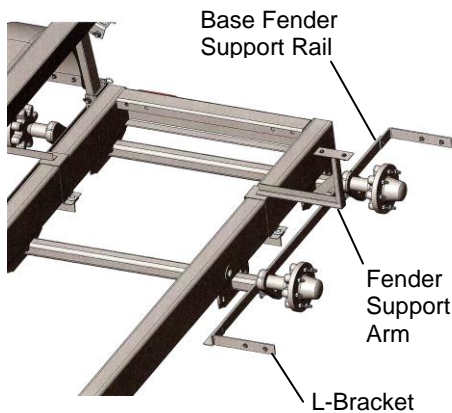
Secure the Dura-Flex Axles to the axle mounts located on the underside of the Header Transport Main Frame using four 5/8" x 1-3/4" Grade 5 bolts with eight 5/8" flat washers and four 5/8" locknuts.

NOTE: The axle should be positioned so the spindle is located toward the rear of the axle centerline.



2. Mounting the Tires

Secure one tire and wheel assembly to each of the rear hub assemblies using the wheel nuts provided. Use a star pattern to tighten the spindle nuts according to SAE standards.

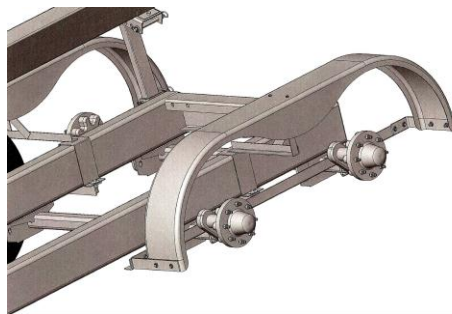


3. Mounting the Rear Fenders

Place one of the Base Fender Support Rail (left or right) on top of the two rear axles between the main frame and spindle as shown. Align the holes in the support rail with the rear axles and loosely secure to each axle using one 3/8" x 3 1/2" x 3 1/2" U-Bolt, two 3/8" flat washers and two 3/8" lock nuts.

IMPORTANT: Be sure the vertical face of the support rail faces the outside of the transport (toward the tires) and the support rail extends farther behind the second rear axle than it does the first rear axle. If the support rail does not project farther behind the second rear axle, the rail is located on the wrong side of the transport and the other rail should be used.

Repeat on opposite side of transport.

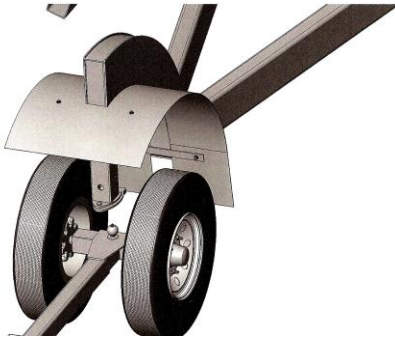


Slide the Fender Support Arm across the header transport main frame and loosely secure to the Angle Iron Support using two 1/2" x 1 1/2" Grade 5 bolts, two 1/2" washers and two 1/2" lock nuts. Mount the Fender to the top of the Fender Support Arm using two 3/8" x 1" flange bolts, two 3/8" rubber/metal washers and two 3/8" whiz nuts. Be sure the side tear drop of the fender is located toward the outside of the transport. Slide the Fender Support Arm along the main frame until the fender is centered above the tires to ensure proper clearance.

Repeat on opposite side of transport.

Mount one Fender L-Brackets to the front and rear end of the fender using two 3/8" x 1" flange bolts, two 3/8" washers and two 3/8" whiz nuts. Secure the other side of the L-Bracket to the Base Fender Support Rail using two 3/8" x 1" flange bolts and two 3/8" whiz nuts. Repeat on opposite side of transport.

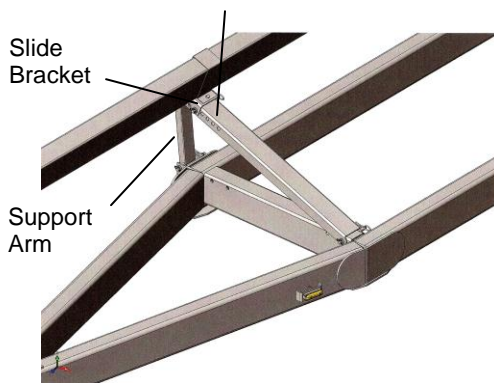
SET-UP INSTRUCTIONS (continued)



4. Mounting the Front Axle Assembly

Mount two wheels and tires to the hubs on the Ball Hitch Tongue and Axle Assembly. Use a star pattern to secure the wheel rim to the hub and tighten to SAE specifications. Once both wheels are secured to the front axle, raise the spring loaded pin on the Header Transport Main Frame and engage the ball hitch on the Front Axle Assembly. (Be sure the ball is greased before attaching to the gooseneck frame.) Once the ball hitch has engaged the locking tube, lower the spring loaded pin into the hole located on the Front Axle Assembly to prevent the assembly from unlatching during transport.

Upper Bar Channel Support

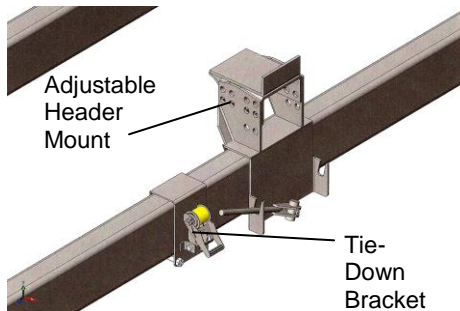


5. Attaching the Adjustable Brackets and Upper Bar

Secure the Upper Bar Channel Support to the left side of the three cross frame channels on the Main Base Frame using one 5/8" x 6" pin and hair pin. Secure the Upper Bar Support Arm to the vertical u-brackets located on the right side of the Main Base Frame using one 5/8" x 6" pin and hair pin. Connect the channel arm to the support arm using one 5/8" x 6" pin and hair pin. The support arms and channel arms can be adjusted and pinned to obtain many different heights and positions.

IMPORTANT: Make sure that all three assemblies are positioned at the same location and height to ensure the upper bar will fit properly.

Secure the Upper Bar Slide Bracket to each the three channel arm using two 5/8" x 6" pins and hair pins. Be sure to position all three slide brackets at the same position on the channel arm. Position the Upper Bar on top of the three slide brackets and secure using the Upper Bar Clamps and two 1/2" washers and two 1/2" lock nuts. The angle of the Upper Bar can be adjusted by removing and repositioning the 5/8" x 6" Hitch Pins in the Upper Bar Adjustable Brackets.



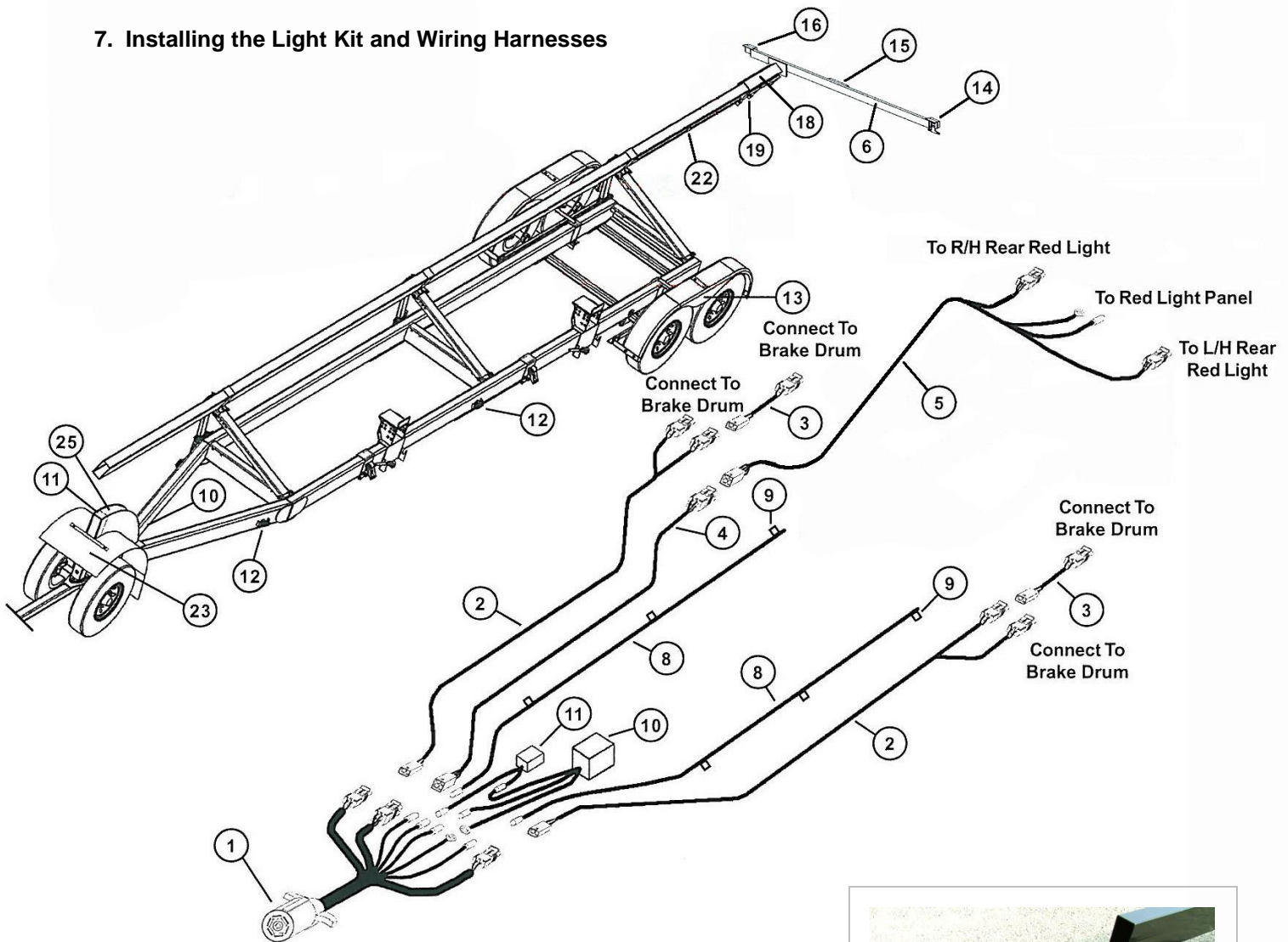
6. Attaching the Adjustable Header Mounts and Tie-Down Brackets

Place the Adjustable Header Mounts and Tie-Down Bracket Assemblies on the outside left tube of the header transport main frame as shown. Position one Adjustable Header Mount and Tie-Down Bracket Assembly on each side of the center cross member. Secure the Adjustable Header Mount to the outside tube using one 3/4" x 6 1/2" Stove Bolt and Clamp Handle Assembly.

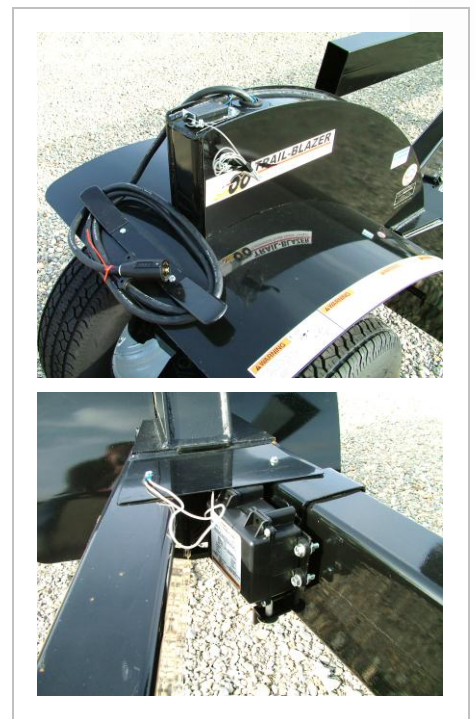
Secure the Tie-Down Bracket to the outside tube using two 1/2" x 5 1/2" Bolts and two 1/2" Lock Nuts. Do Not Tighten the 1/2" bolts on the top of the assembly, but allow the Tie-Down Brackets to move freely along the outer tube. The Tie-Down Bracket can be secured with the bolts either above or below the main frame tubing as long as the ratchet is positioned with the strap directed upward.

SET-UP INSTRUCTIONS (continued)

7. Installing the Light Kit and Wiring Harnesses



- A. Insert the Main Wiring Harness, end opposite the Seven Prong Connector End, through the grommet located at the front of the gooseneck of the Header Transport Main Frame and exit the A-Frame behind the gooseneck.
- B. Insert one Main Brake Harness, Long Light Harness Extension and Side Light Wire through the right side grommet located behind the gooseneck and extend the wires toward the rear of the Header Transport Main Frame.
- C. Insert the other Long Light Harness Extension and Side Light Wire through the left side grommet located behind the gooseneck and extend the wires toward the rear of the Header Transport Main Frame.



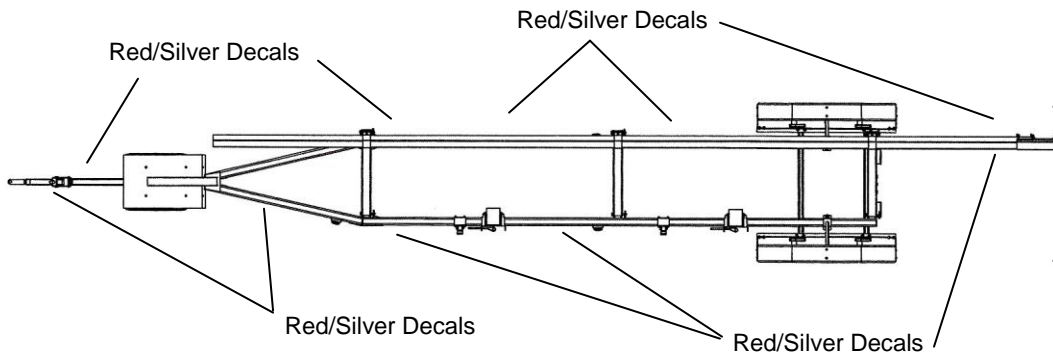
SET-UP INSTRUCTIONS (continued)

- D. Exit the Main Wiring Harness and corresponding brakes and light wires at the grommets located on each side of the main frame tubing adjacent to the rear axles.
- E. Connect the Side Light Wire to each of the side marker lights located along the Header Transport Main Frame and on the outside of the rear fenders using one In-Line Connector. (Note: The two amber/red lights should be mounted on the outside face of each fender with the red light positioned toward the rear.) Secure the Side Light Mounting Bracket to the transport using two 1/4" x 1" bolts and 1/4" lock nuts. Snap the corresponding side light into the mounting bracket.
- F. Exit the Main Brake Harness at the grommets on the Main Frame Base Unit adjacent to the rear axle. Connect one end of the Main Brake Harness into the first wheel electric brake unit. Connect the Brake Harness Extension into the second end of the Main Brake Harness. Connect the other end of the Brake Harness Extension into the second wheel electric brake unit.
- G. Exit the Long Light Harness Extension at the grommet adjacent to the rear of the Main Frame Base Unit.
- H. Attach the Extension Bracket the end of the Upper Bar using two Angle Iron Supports and four 1/2" x 7" bolts with 1/2" lock nuts. Secure the Light Mounting Bar to the end of the Extension Bracket using two 1/2" x 1 1/4" Grade 5 Flange Bolts and Lock Nuts. Attach the Left and Right Rear Red Lights and the Rear Light Panel to the Light Mounting Bar using 1/4" x 1" Bolts and 1/4" Lock Nuts.
- I. Connect the Rear Light Harness and extend the three wire connector ends toward the corresponding left and right rear lights and the brown and white wire toward the center light panel. Connect the ends to the corresponding lights and secure the white ground wire the transport main frame using one self tapping screw.
- J. Place the Wire Shields across the Rear Light Harness that runs along the upper bar and connect to the upper bar using self-tapping screws as necessary.
- K. Secure all cords and harnesses to the transport using the black plastic ties and wire clips as necessary.
- L. Secure the Wiring Harness Storage Bracket to the front of the gooseneck fender using two 1/4" x 1" bolts and 1/4" lock nuts.
- M. Secure the Break Away Kit and bracket to the front, right side of the main frame. Secure the Break Away Switch to the top of the gooseneck and run the black and blue wires through the adjacent grommet and extend to the rear of the gooseneck.
 - 1. Using a self tapping screw, attach the white wire from the Break Away Kit and the white wire from the Main Wiring Harness to the main frame.
 - 2. Connect the blue wire from the break away kit to the blue wire on the break away switch.
 - 3. Connect the black wire on the break away kit to the black wire on the main wiring harness.
 - 4. Connect the black wire on the break away switch to the light blue wire on the main wiring harness.

SET-UP INSTRUCTIONS (continued)

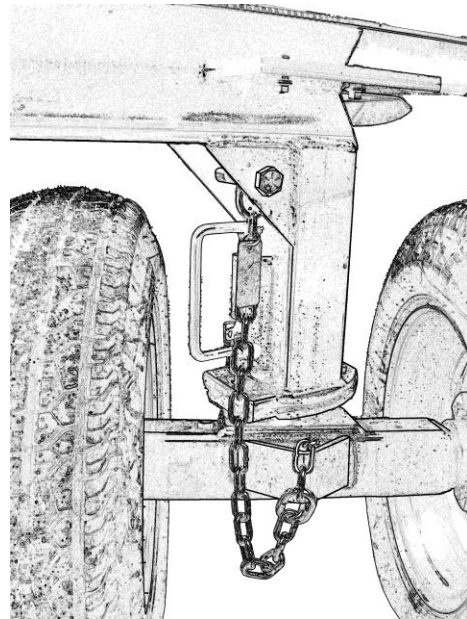
8. Placing the Red and Silver Reflective Decals

Place the reflective red and silver decals on the along sides of the Upper Bar, Base Unit Main Frame or Ball Hitch Tongue so at decals are represented on at least half of the overall length.



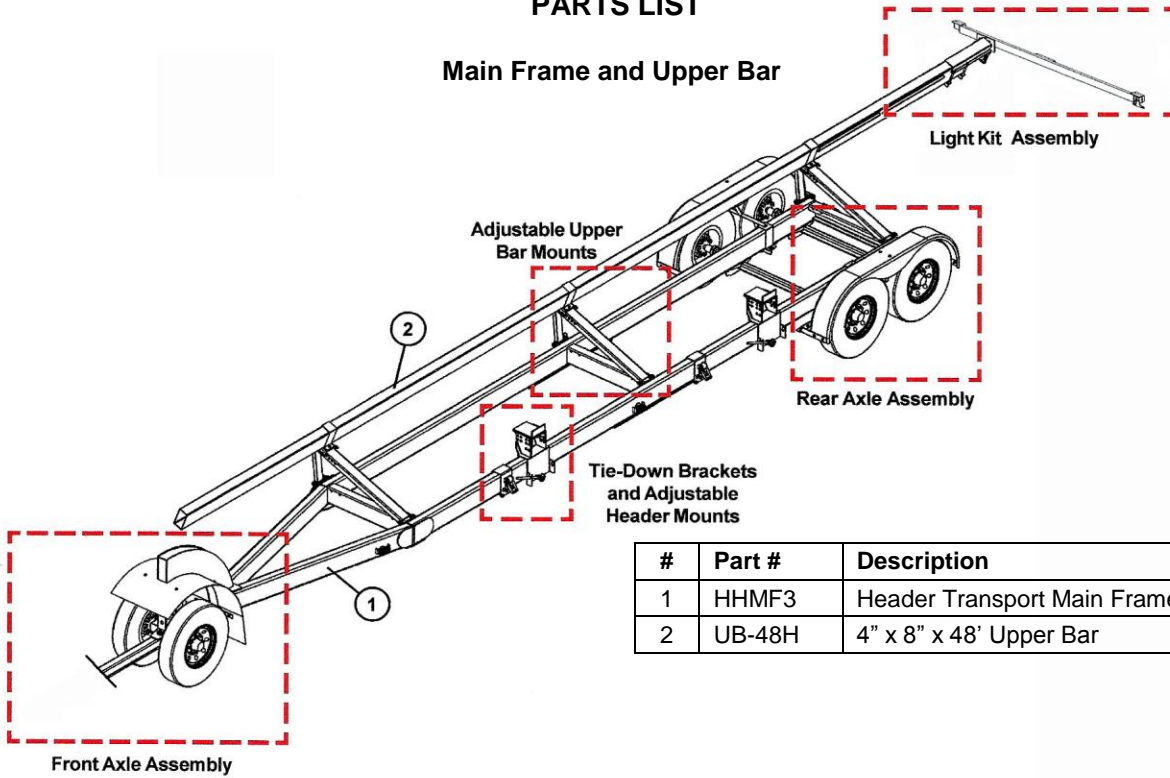
9. Installing the Safety Chain Around the Ball Hitch Axle Weldment

Bolt the ring end of the safety chain to the underside of the gooseneck using one 3/4" x 5" Grade 8 Bolt and 3/4" Lock Nut. Loop the chain around the Strap Weldment located on the back side of the front axle.



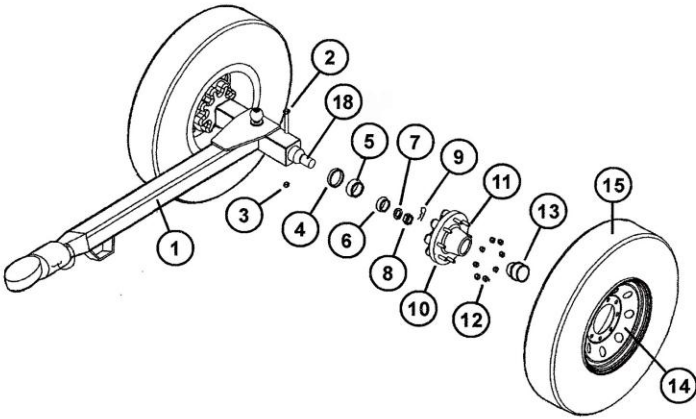
PARTS LIST

Main Frame and Upper Bar



| # | Part # | Description |
|---|--------|-----------------------------|
| 1 | HHMF3 | Header Transport Main Frame |
| 2 | UB-48H | 4" x 8" x 48' Upper Bar |

Front Axle Assembly

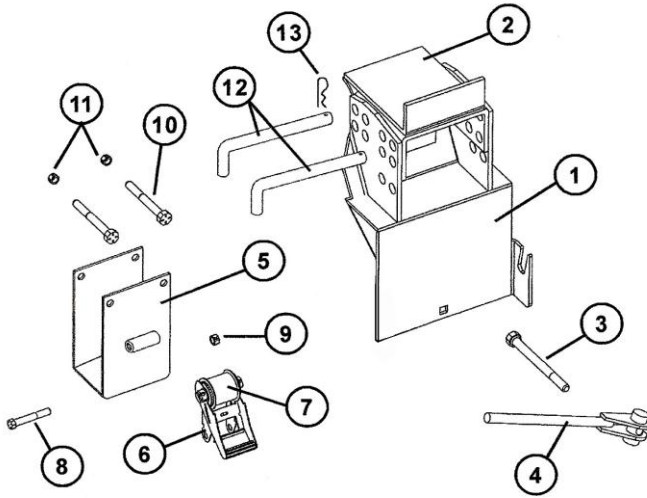


| # | Part # | Description |
|---|---------|----------------------------|
| 1 | BHT-1 | Ball Hitch Tongue Weldment |
| 2 | 124G5B | 1/2" x 4" Grade 5 Bolt |
| 3 | 12LN | 1/2" Lock Nut |
| 4 | HC-S7K | Grease Seal |
| 5 | 25580 | Large Bearing (0170012C) |
| 6 | HC-SB7K | Small Bearing |

| # | Part # | Description |
|----|-------------|-----------------------------|
| 7 | HC-SW | Spindle Washer |
| 8 | SN-HC1 | Slotted Spindle Nut |
| 9 | HC-CP | Cotter Pin |
| 10 | H7K-HC | Hub, 8 Bolt w/cups & studs |
| 11 | HCWS-8 | Wheel Stud |
| 12 | WN-HC8 | Wheel Nut |
| 13 | DC-HC7 | Dust Cap |
| 14 | 16NT | 16" New Tire |
| 15 | WR-166-8-65 | Wheel Rim, 16x6, 6 hole, HC |
| 16 | 25520 | Large Race (not shown) |
| 17 | SR-7K | Small Race (not shown) |
| 18 | FS-HC1 | Front Spindle |

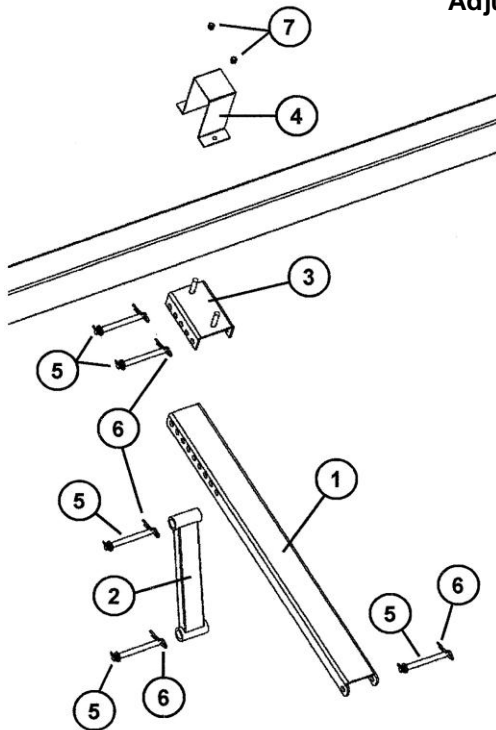
PARTS LIST

Tie-Down Bracket and Adjustable Header Mount



| # | Part # | Description |
|----|----------|---------------------------------|
| 1 | AB-L2 | Lower Adjustable Bracket |
| 2 | AB-U2L | Upper Adjustable Bracket, Left |
| 2 | AB-U2R | Upper Adjustable Bracket, Right |
| 3 | SB34612 | Stove Bolt, 3/4" x 6 1/2" |
| 4 | CHA2 | Clamp Handle Assembly |
| 5 | TDMB-2 | Tie Down Mounting Bracket |
| 6 | RA-1 | Ratchet |
| 7 | TDS-1 | Tie-Down Strap and Hook Assy |
| 8 | 12234G8B | 1/2" x 2 3/4" Grade 8 Bolt |
| 9 | 12NLN | 1/2" Nylon Lock Nut |
| 10 | 12512G5B | 1/2" x 5 1/2" Grade 5 Bolt |
| 11 | 12LN | 1/2" Lock Nut |
| 12 | 3412P | 3/4" x 12" Pin |
| 13 | HC-CP | Cotter Pin |

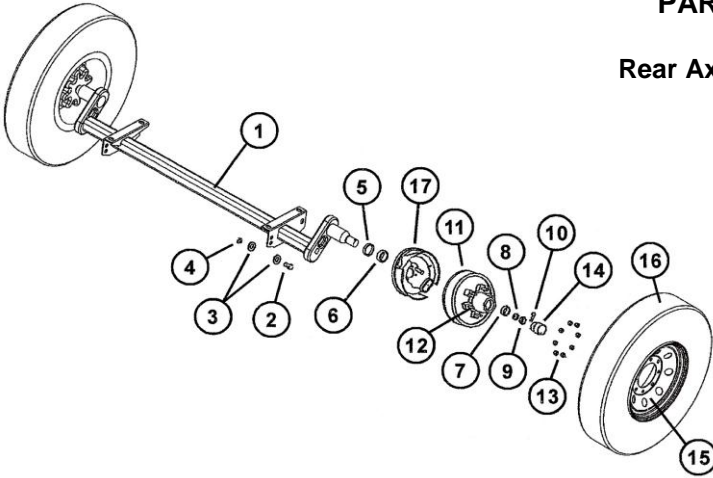
Adjustable Upper Bar Mount



| # | Part # | Description |
|---|--------|-------------------------|
| 1 | UBCM-3 | Upper Bar Channel Mount |
| 2 | UBSA-3 | Upper Bar Support Arm |
| 3 | UBSM-3 | Upper Bar Slide Mount |
| 4 | UBC-3 | Upper Bar Clamp |
| 5 | HP-586 | 5/8" x 6" Pin |
| 6 | 316HP | 3/16" Hair Pin |
| 7 | 12LN | 1/2" Lock Nut |
| 8 | 12W | 1/2" Regular Washer |

PARTS LIST

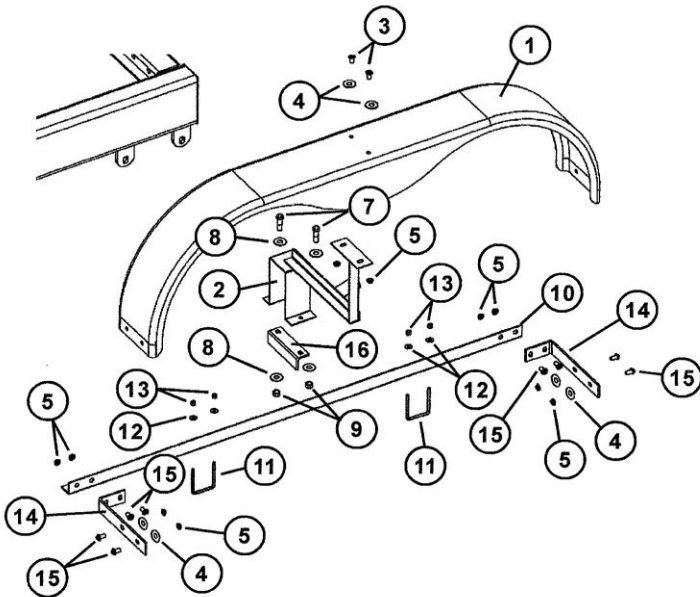
Rear Axle Assembly



| # | Part # | Description |
|---|----------|--|
| 1 | 1441688X | Dura-Flex Axle Weldment complete with brakes |
| 2 | 58134G5B | 5/8" x 1 3/4" Grade 5 Bolt |
| 3 | 58FW | 5/8" Flat Washer |
| 4 | 58LN | 5/8" Lock Nut |
| 5 | 569284 | Grease Seal |
| 6 | 25580 | Large Bearing |

| # | Part # | Description |
|----|-------------|---|
| 7 | 363604 | Small Bearing |
| 8 | HC-SW | Spindle Washer |
| 9 | SN-HC1 | Slotted Spindle Nut |
| 10 | HC-CP | Cotter Pin |
| 11 | 568896 | Hub, 8 Bolt with brake drum with cups and studs |
| 12 | HCWS-8 | Wheel Stud |
| 13 | WN-HC8 | Wheel Nut |
| 14 | DC-HC8 | Dust Cap |
| 15 | WR-166-8-65 | Wheel Rim, 16x6 8 hole, HC |
| 16 | 16NT | 16" New Tire |
| 17 | 568906 | 12" Electric Brake (L/H) |
| 17 | 568905 | 12" Electric Brake (R/H) |
| 18 | 25520 | Large Race (not shown) |
| 19 | HC-SR8K | Small Race (not shown) |

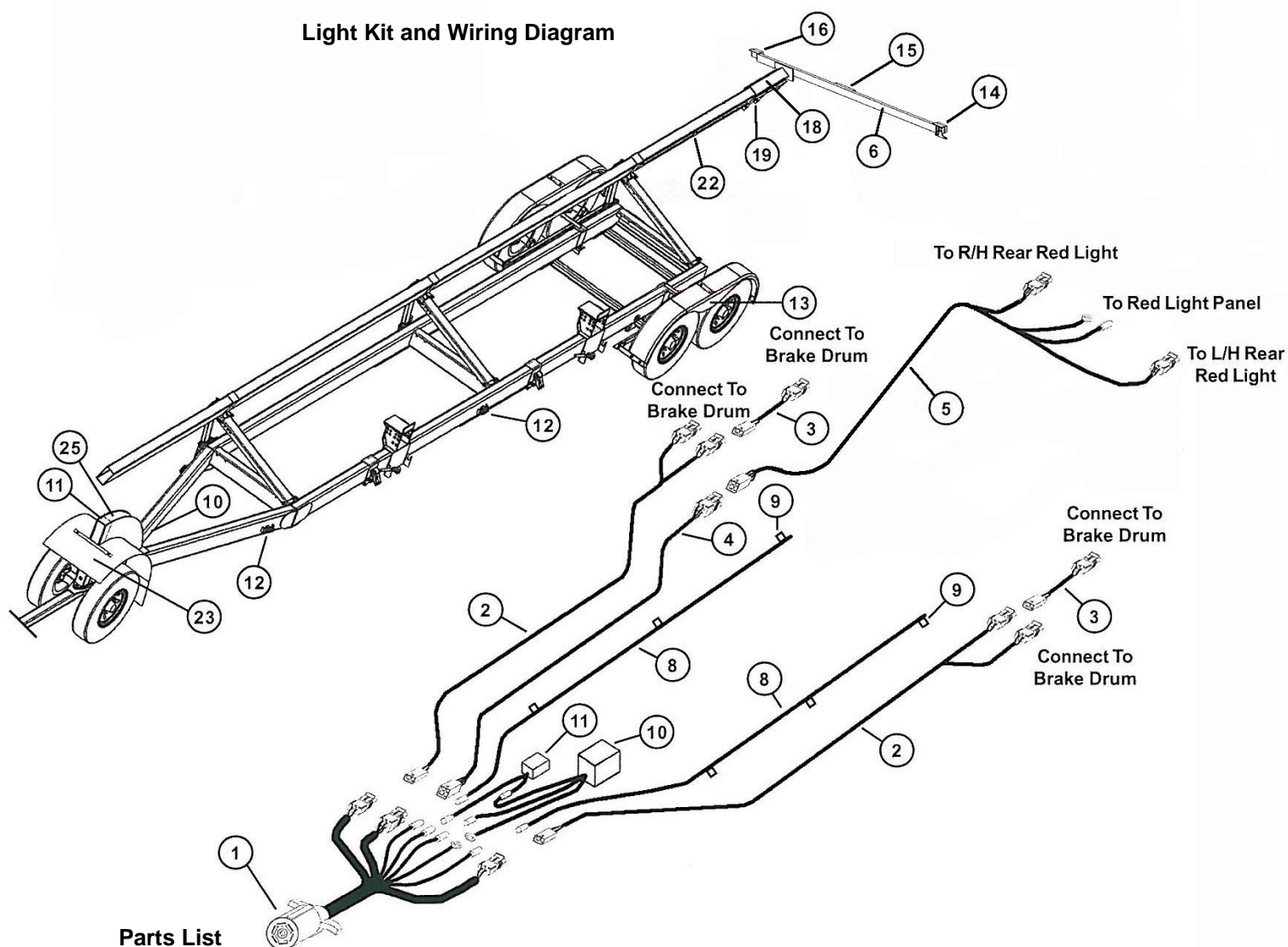
Rear Fender Assembly



| # | Part # | Description |
|----|------------|----------------------------------|
| 1 | WF-1 | Wheel Fender |
| 2 | FSA-2 | Fender Support Arm |
| 3 | 381G5B | 3/8" x 1" Grade 5 Bolt |
| 4 | 38RMW | 3/8" Rubber Metal Washer |
| 5 | 38WN | 3/8" Whiz Nut |
| 7 | 12112G5B | 1/2" x 1 1/2" Grade 5 Bolt |
| 8 | 12-RW | 1/2" Regular Washer |
| 9 | 12LN | 1/2" Lock Nut |
| 10 | BFSR-L | Base Fender Support Rail (left) |
| 10 | BFSR-R | Base Fender Support Rail (right) |
| 11 | 38312312UB | 3/8" x 3 1/2" x 3 1/2" U-Bolt |
| 12 | 38-FW | 3/8" Flat Washer |
| 13 | 38LN | 3/8" Lock Nut |
| 14 | FLB-1 | Fender L-Bracket |
| 15 | 381FB | 3/8" x 1" Flange Bolt |
| 16 | AIS-2 | Angle Iron Support |

PARTS LIST

Light Kit and Wiring Diagram



Parts List

| # | Part # | Description |
|---|--------|---|
| 1 | MWH-HS | Main Wiring Harness with 7-Prong Connector End |
| 2 | MBH-2 | Main Brake Harness (blue, white) |
| 3 | BHE-2 | Brake Harness Extension (black, white) |
| 4 | LHE-L | Light Harness Extension, Long (brown, green, yellow, white) |
| 5 | RLH-2 | Rear Light Harness (connects Long light Harness Extension to R/H and L/H Light and Light Panel) |
| 6 | LMB-2 | Light Mounting Bar |

| # | Part # | Description |
|----|-------------|--|
| 7 | 12114-G5-FB | 1/2" x 1 1/4" Gr 5 Flange Bolt |
| 8 | SLW-3 | Side Light Wire (brown) |
| 9 | ILC-1 | In-Line Connector (for side lights) |
| 10 | BAW-1C | Break Away Kit (white, black, blue) |
| 11 | BAS-1 | Break Away Switch with cable (black, blue) |
| 12 | SML-2 | Side Marker Light (amber) |
| 13 | SML-1 | Side Marker Light (red/amber) |
| 14 | RLA-1L | Rear Light Assembly, Left |
| 15 | RLA-1R | Rear Light Assembly, Right |
| 16 | RLP-1 | Rear Light Panel (3 red lights) |

PARTS LIST

Light Kit and Wiring Diagram

Parts List (continued)

| # | Part # | Description |
|----|--------|--------------------------------|
| 17 | ----- | ----- |
| 18 | EB-1S | Extension Bracket, short |
| 19 | AIS-2 | Angle Iron Support (each) |
| 20 | 127-HB | 1/2" x 7" Hex Bolt |
| 21 | 12LN | 1/2" Lock Nut |
| 22 | UBWC-2 | Upper Bar Wire Cover (2 pcs) |
| 23 | WHB-1 | Wire Harness Storage Bracket |
| 24 | RCW-1 | Rubber Cap for Storage Bracket |
| 25 | 141-B | 1/4" x 1" Bolt |

| # | Part # | Description |
|----|--------|--------------------------------|
| 26 | 14LN | 1/4" Lock Nut |
| 27 | STS-1 | Self Tapping Screw |
| 28 | LPMB-1 | License Plate Mounting Bracket |
| 29 | RD-SR1 | Silver/Red Reflective Decal |
| 30 | GR-134 | Grommet |
| 31 | WC-1 | Wire Clip |
| | | |
| | | |
| | | |

INITIAL OPERATION / MAINTENANCE

BE CERTAIN THAT ALL POWER IS SHUT OFF BEFORE SERVICING THE HEADER TRANSPORT

Before the header transport is put into service:

- ✓ Has the Slow-Moving Vehicle Emblem been properly positioned at the rear of the header transport?
- ✓ Have all danger, warning, caution and important signs on the equipment been read and understood? If employees or others use or are near this equipment, make sure that they also have read and understood all danger, warning, caution and important signs on the equipment and have also read the operator's manual.
- ✓ Are all braces, bolts, nuts, lug bolts and lug nuts properly fastened?
- ✓ Has the header transport been properly fastened to the towing unit? Use a good quality hitch pin with clip and safety chains.
- ✓ Are the rear amber extremity lights properly positioned? Extend lights within 16" of the left and right extremities of the header.

SAFETY CHAIN USER INSTRUCTIONS

- a) Secure the safety chain by looping it around the tongue support located on the underside of the Ball Hitch Tongue and connect to the towing machine's attaching bar.
- b) Do Not allow more slack than necessary for articulation.
- c) Do Not use any intermediate support as the attaching point.
- d) Store the safety chain by securing it around the tongue.
- e) Replace the safety chain if one or more links or end fittings are broken, stretched or otherwise damaged or deformed.

OPERATING INSTRUCTIONS/MAINTENANCE

- Adjust the brackets on the header transport to best fit your make and model header. When mounting the header, NEVER position yourself under or near the header. Securely fasten the header to the header transport.
- Do not exceed the load and size limits of the unit.
- Keep the tires properly inflated. Both under inflation and over inflation can greatly reduce tire life.
- Inspect bracing and welds periodically and repair immediately if needed. Failure to repair could cause extensive damage and greatly reduce the life of the unit.
- Repack the bearings in the hub assembly once a year or as needed. Use a good quality bearing lubricant such as Bearing Gard MK1 or equivalent.
- Grease the ball using the zerk on the front gooseneck assembly every 8 hours or as needed.
- Be sure to check the hub nuts often and keep them properly tightened.

BRAKING SYSTEM REQUIREMENTS:

Tow Loads Safely

Stopping distance increases with speed and weight of towed loads, and on slopes. Towed loads with or without brakes that are too heavy for the tractor or are towed too fast can cause loss of control. Consider the total weight of the equipment and its load.

Observe these recommended maximum road speeds, or local speed limits which may be lower:

- If towed equipment does not have brakes, do not travel more than 32 km/h (20 mph) and do not tow loads more than 1.5 times the tractor weight.
- If towed equipment does have brakes, do not travel more than 40 km/h (25 mph) and do not tow loads more than 4.5 times the tractor weight.

Ensure the load does not exceed the recommended weight ratio. Use additional caution when towing loads under adverse surface conditions, when turning, and on inclines.

REPORTING SAFETY DEFECTS

J. & M. Manufacturing Co., Inc.
P.O. Box 547
Fort Recovery, OH 45846

Reporting Safety Defects

If you believe that your vehicle has a defect which could cause a crash or could cause injury or death, you should immediately inform the National Highway Traffic Safety Administration (NHTSA) in addition to notifying J. & M. Manufacturing Co., Inc.

If NHTSA receives similar complaints, it may open an investigation, and if it finds that a safety defect exists in a group of vehicles, it may order a recall and remedy campaign. However, NHTSA cannot become involved in any individual problems between you, your dealer or J. & M. Manufacturing Co., Inc.

To contact NHTSA you may either call the Auto Safety Hotline toll-free at 1-800-424-9393 (366-0123 in the Washington, D.C., area) or write to:

NHTSA
U.S. Department of Transportation
400 7th Street SW, (NSA-11)
Washington, D.C. 20590

You can also obtain information about motor vehicle safety from the hotline.

SERVICE / MAINTENANCE RECORD

| Date | Description | Notes |
|------|-------------|-------|
| | | |
| | | |
| | | |
| | | |
| | | |
| | | |
| | | |
| | | |
| | | |
| | | |
| | | |
| | | |
| | | |
| | | |
| | | |
| | | |
| | | |