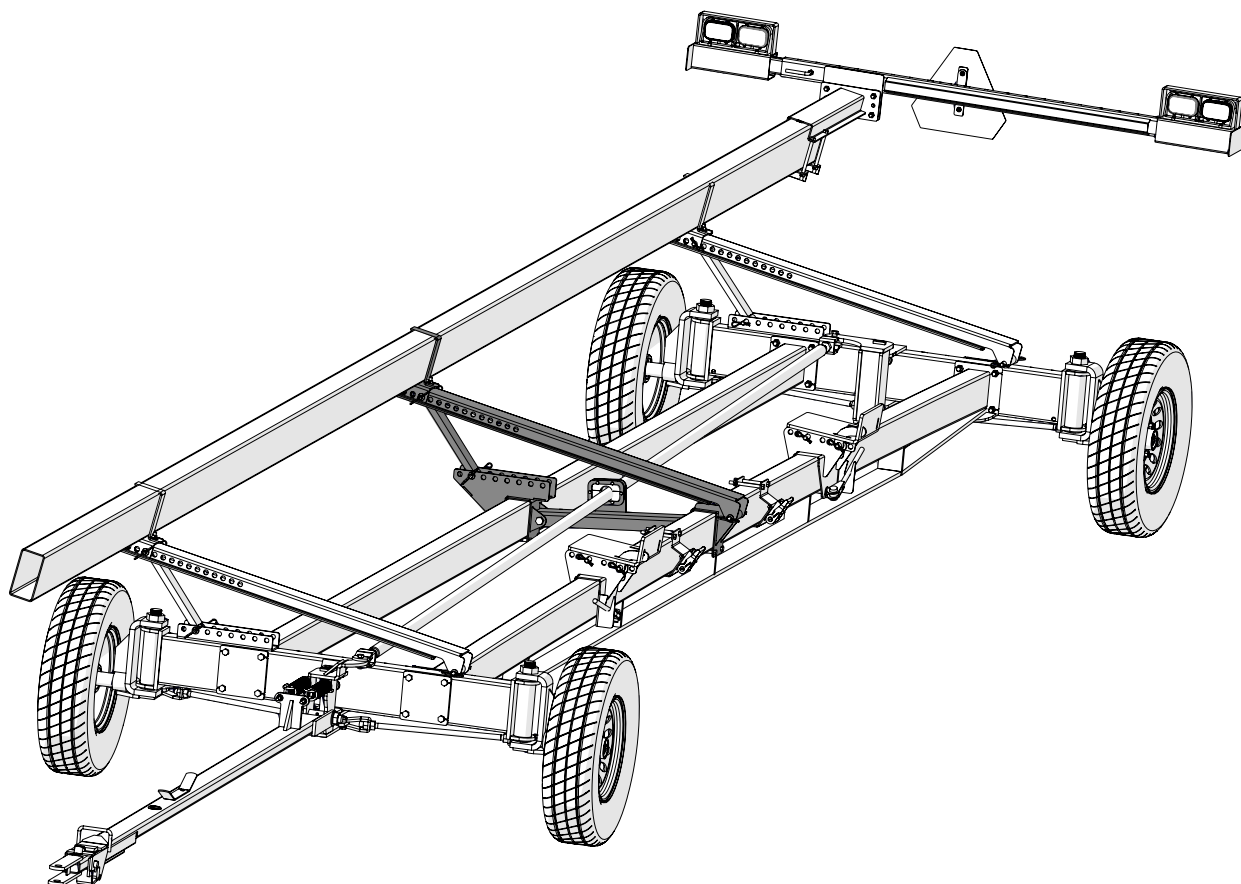




Manual

4WS HEADER TRANSPORT SERVICE MANUAL

Upper Bar Center Support Upgrade JM0058519



Rev. 2.25.2020

J&M Manufacturing Co., Inc

284 Railroad Street - P.O. Box 547 | Fort Recovery, OH 45846 | Ph: (419) 375-2376 | Fax: (419) 375-2708

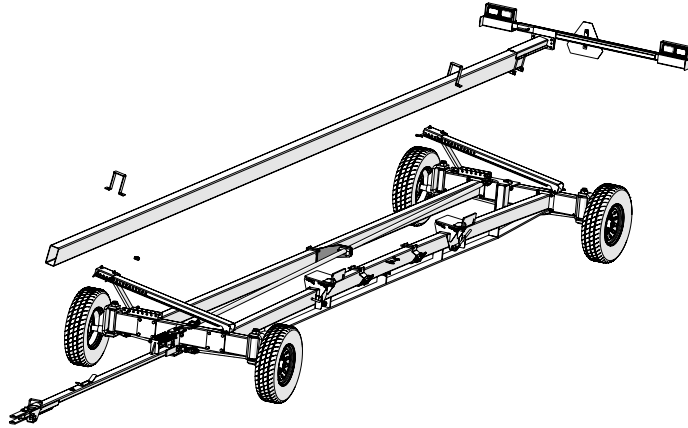
www.jm-inc.com

Upper Bar Center Support Update for 4WS

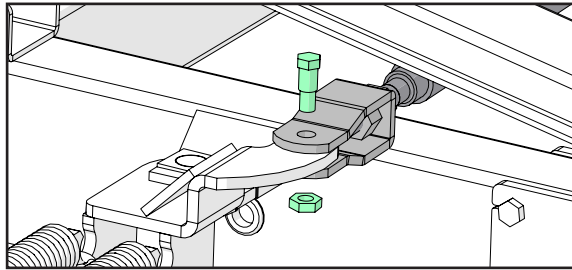
1. The first few steps in this process involve removing the upper bar. In order to remove the upper bar, the light wire needs to have slack. To get slack in the wire, start in the tongue and pull some excess wire back through the tongue. If the wire between the tongue and the upper bar is zip-tied, you must cut the zip tie.



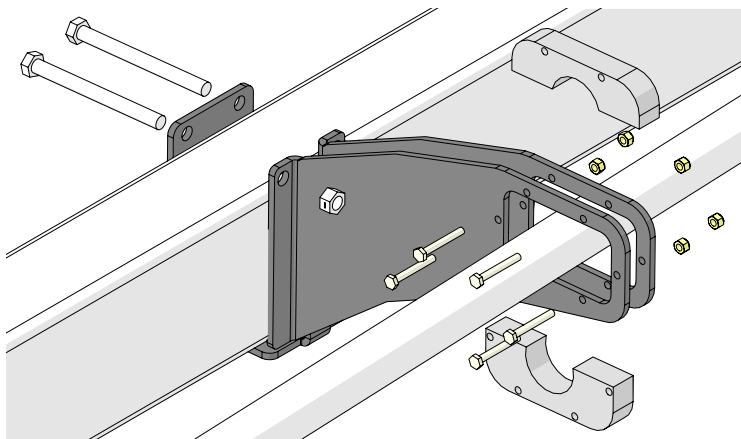
2. Remove the 1/2"-13 SF hex nuts that hold both upper bar clamps. Using a hoist or a fork lift, remove the upper bar.



3. Take one side of tie rod off by loosening the 3/4" shoulder bolt nut and removing the 3/4" shoulder bolt. **The shoulder bolt is threaded part of the way so you must unthread the bolt to remove it.**



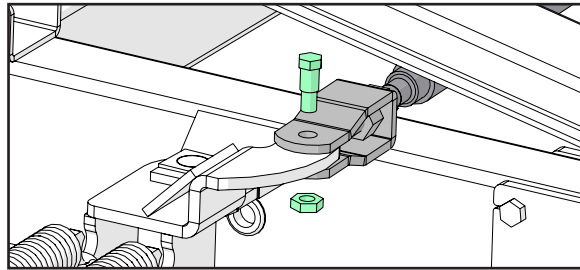
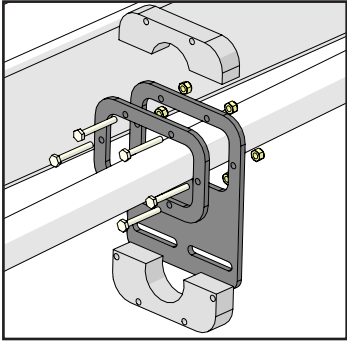
4. Remove the old tie rod support arm. To complete this step, first remove the guide blocks by loosening and removing the 1/4"-20 x 2" hex bolts and 1/4"-20 nylon locking hex nuts that surround the tie rod. The guide blocks and their hardware will be reused later, so set them to the side. Then, loosen and remove the 1/2"-13 x 5" hex bolts and 1/2"-13 centerlock hex nuts. Lower the tie rod and slide off the support arm.



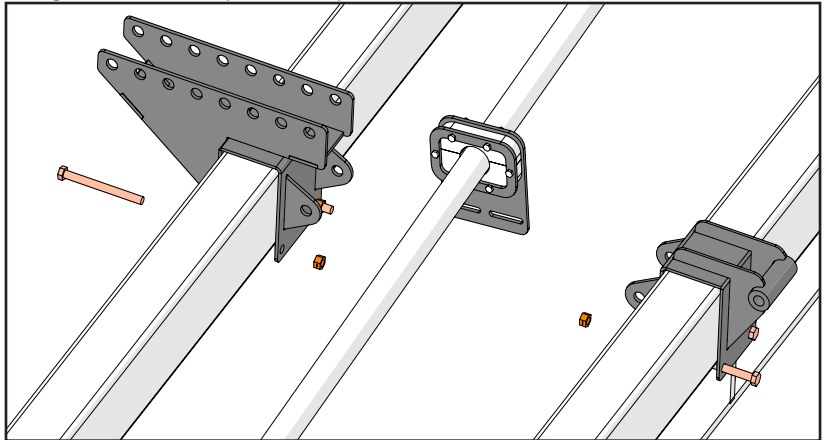
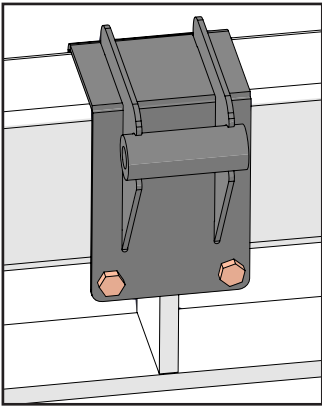
*Guide blocks will be reassembled in the same orientation.

Upper Bar Center Support Update for 4WS

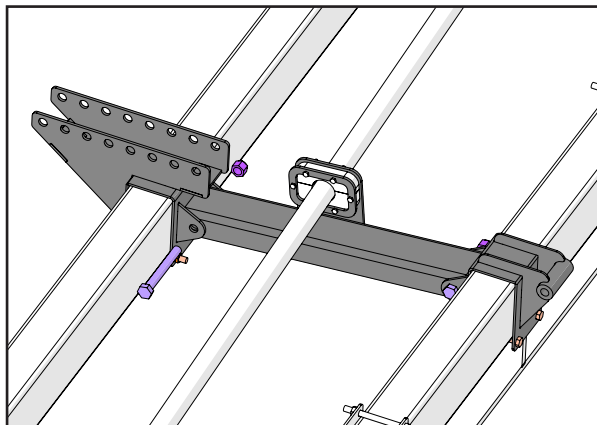
5. Slide the new tie rod support braces onto the tie rod. Slide the larger brace towards the rear of the header transport and the smaller brace towards the front. Insert the guide blocks and secure using the original hardware. While inserting the guide blocks, ensure all holes line up. The guide blocks are two different parts and must line up correctly. Reattach the tie rod and secure using the original 3/4" shoulder bolt and nut.



6. Place the upper bar center support brackets on the header transport. The small bracket will straddle the support in the middle of the header transport (as shown below). Place the large bracket on the corresponding bar so they are aligned. Put the 1/2"-13 x 5" hex bolts and 1/2"-13 centerlock hex nuts into place and leaving loose until step 7 is complete.

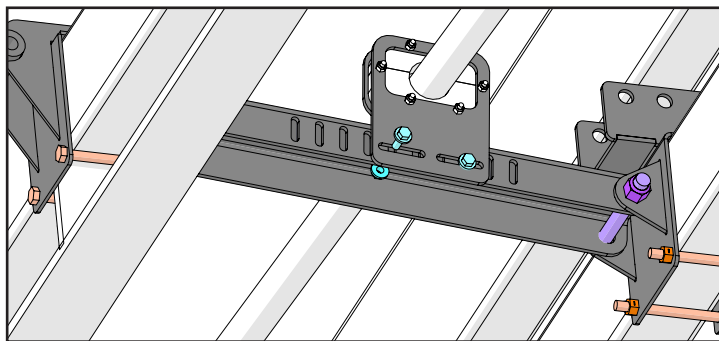


7. Bolt the upper bar center support brace to both support brackets using 3/4"-10 x 6" hex bolts and 3/4"-10 nylon locking hex nuts. Ensure the center support brace is attached with the holes for the guide blocks facing the rear of the header transport. Tighten the 1/2"-13 hardware shown in the previous step.

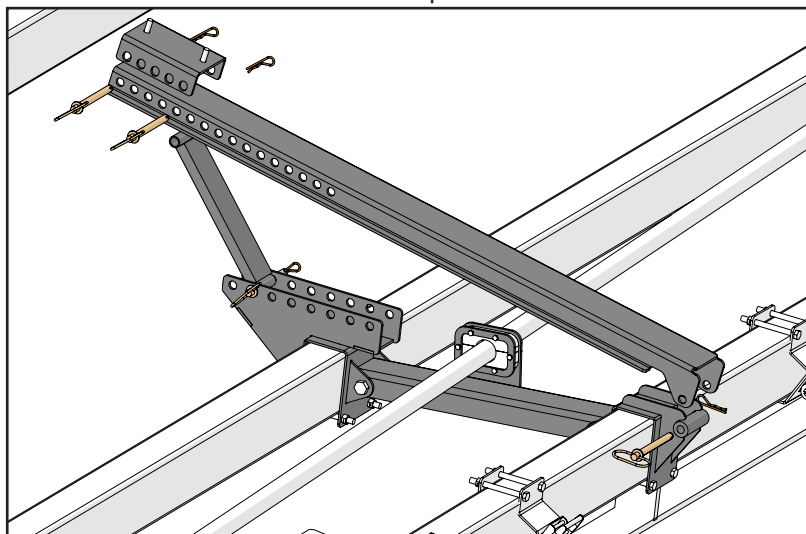


Upper Bar Center Support Update for 4WS

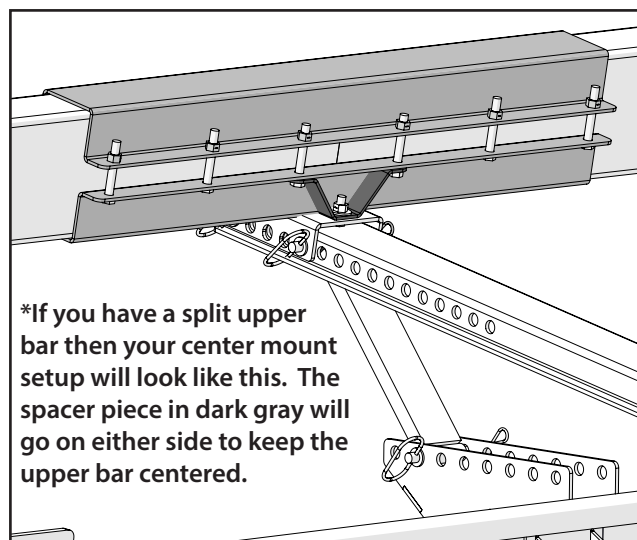
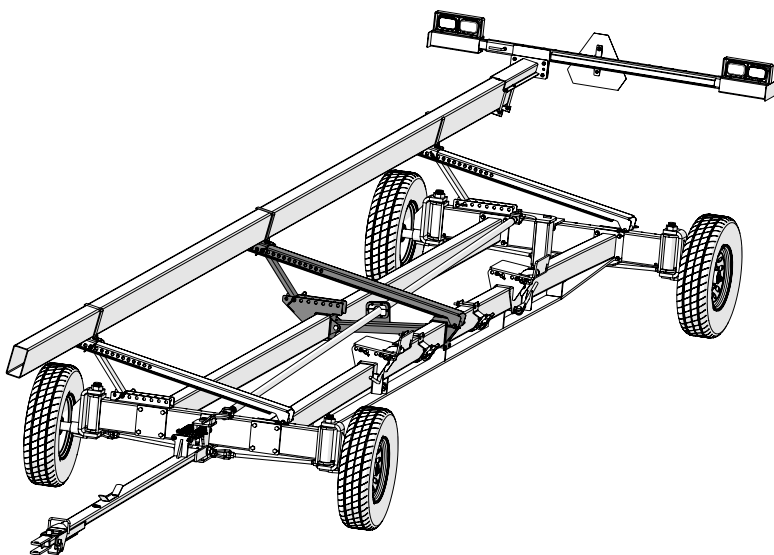
8. Secure the tie rod support brackets to the rear of the upper bar center support brace using 3/8"-16 x 1" SF hex bolts and 3/8"-16 SF hex nuts. Before tightening nuts, push bracket up so that the guide blocks support the tie rod to remove sag in the tie rod.



9. Place the lifting arm and upper bar support arm on the center support brackets. Pin the lifting arm and upper bar support arm in the same holes that are used in the front and back of the header transport.



10. Place the upper bar back in place and secure using the 3 upper bar clamps and 1/2"-13 SF hex nuts. Remove the slack in the light wire by threading the excess wire back through the tongue. Secure the excess cord to the cord wrap on the tongue.



*If you have a split upper bar then your center mount setup will look like this. The spacer piece in dark gray will go on either side to keep the upper bar centered.