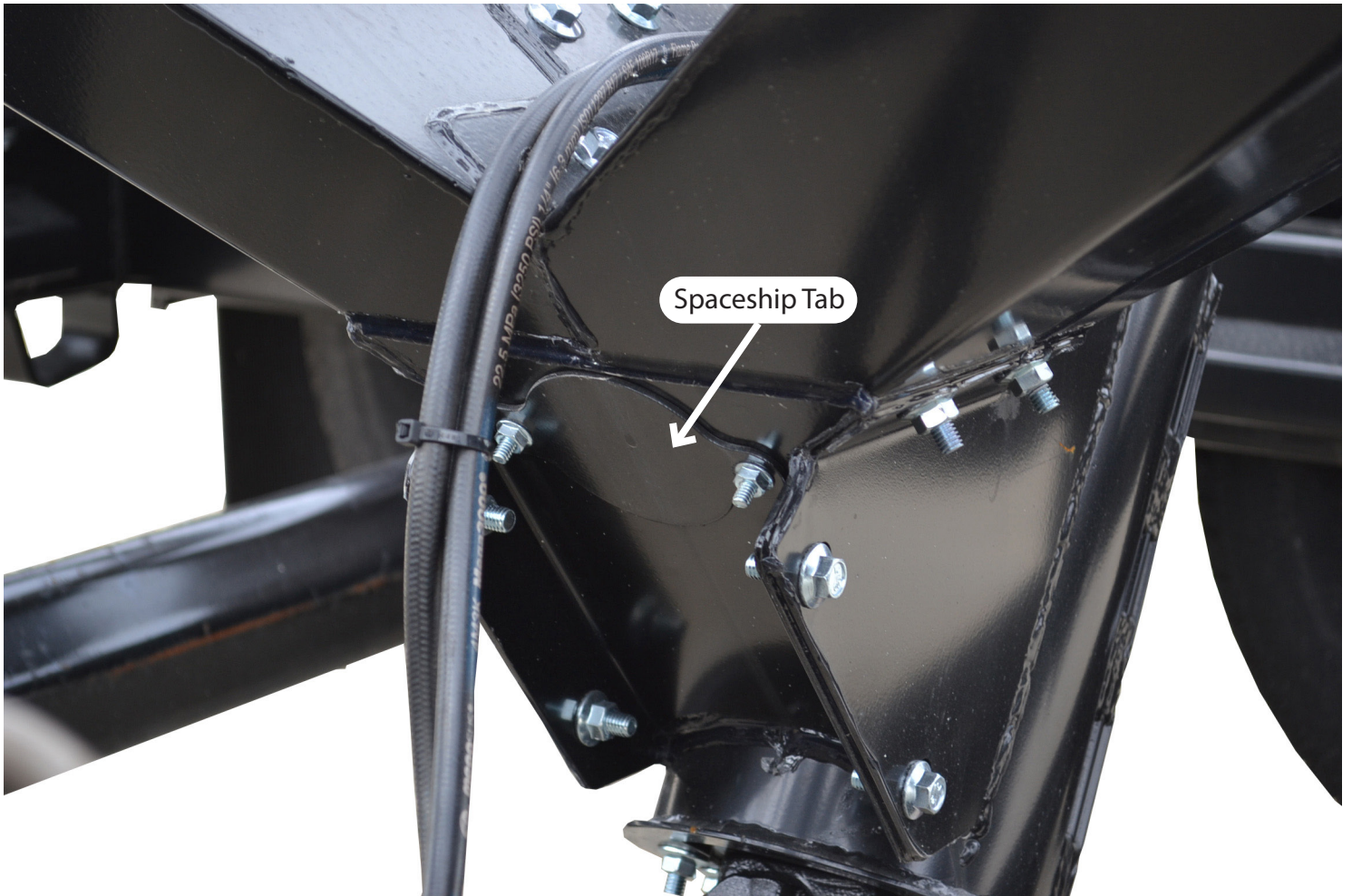
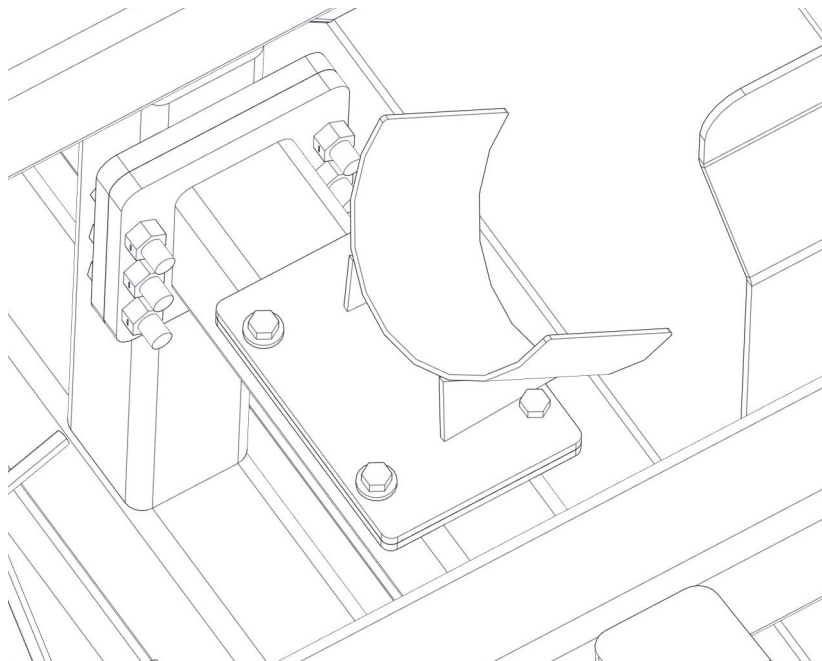


Lundell Talc Installation

Step 1: Turn the Speed Tender Pro on and raise the auger to the unload position. Turn motor off once moved.
Step 2: Remove the "Spaceship" tab from the Speed Tender Pro chutes. Once the "Spaceship" is removed, replace the hardware.



Step 3: Remove Auger Rest.



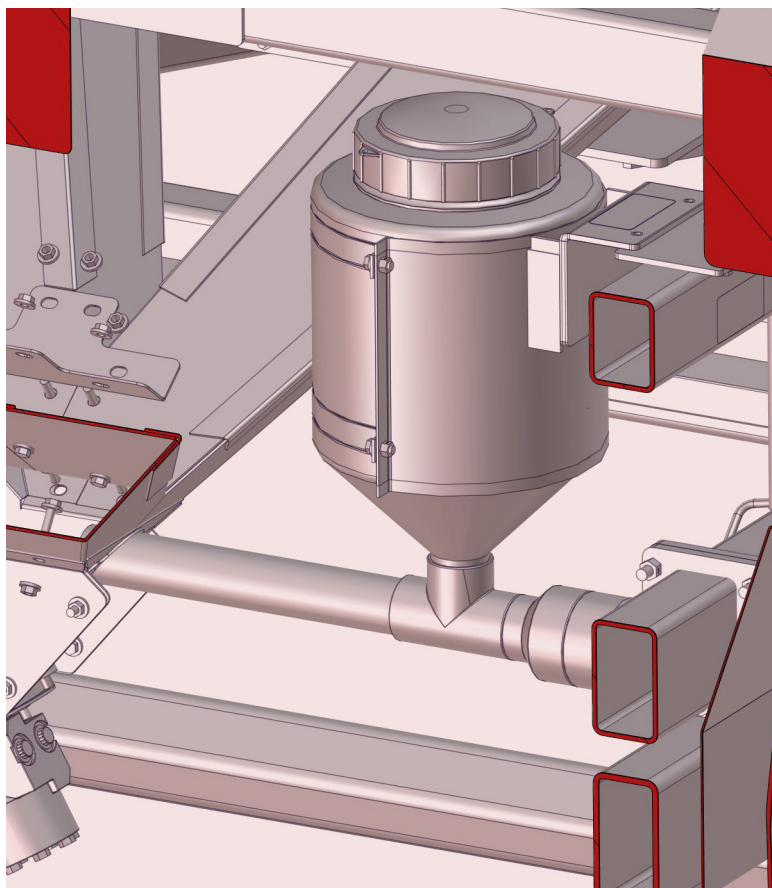
Lundell Talc Installation

Step 4: Place the talc applicator in the position shown.

Step 5: Re-install the Auger Rest above the Talc Applicator support plate. Tighten Hardware once finished.

Step 6: Connect the supplied Y- cable to the Weather-Pak connection located underneath the valve body right behind the motor. (Zip tie the cable along with the hydraulic lines running to the valve body.)

Step 7: Caulk around the Talc Applicator tube to form a seal between the PVC and the Chute.



NOTE: To turn the speed of the Talc Applicator up or down adjust the knob at the base of the Talc Applicator located directly beneath the auger rest.